



Island playground inspired by the surrounding sea



Marine inspired play space by the sea

At Natureworks, we love turning kids onto the magic of nature, so we were thrilled to create sculptures for a marine inspired play space. The playground is at Headland Park in Point Lookout (Mulumba) at North Stradbroke Island (Minjerribah), fondly known as Straddie.

The playground was part of an upgrade at Headland Park that included car parks, picnic facilities and new play equipment.

The play area has a number of marine-themed features, including these created by Natureworks:

- a large shell cubby house
- sea urchin seats
- pipi shell steppers
- loggerhead turtle sculpture.



Our shell cubby house at the playground in Headland Park, Point Lookout, North Stradbroke Island



“Visitors young and old will appreciate the new play space, which sits comfortably in the island landscape with its whale and turtle play structures, dolphin spring toy and cone shell cubby.”

Julie Talty, Acting Mayor, Redland City

“This fabulous park is well-loved and enjoyed by local residents and the wider Redlands Coast community,”

Karen Williams, Mayor, Redland City



Loggerhead turtle, sea urchins and shell cubby at the playground



Sea urchin and pipi shell at the playground



Three sea urchins at the Natureworks studio, ready for transport



Close-up of the loggerhead turtle



Five pipi shells, ready for transport



Inspired by nature

When creating sculptures of animals, plants, rocks, shells or other natural objects, we start with inspiration from nature, naturally!

For this marine-themed project, our artists used real shells as a basis to create beautiful sculptures for the playground.



Fossilised shell



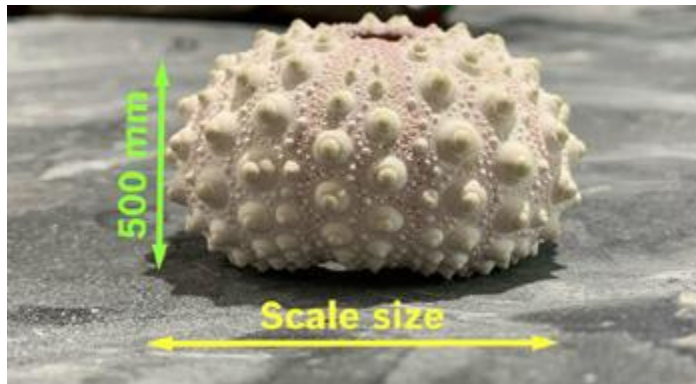
Scale clay model



Shell cubby house



Sea urchin shell



Sea urchin shell showing scale for sculpture



Sea urchin seat



Pipi shells



Pipi shell showing required scale for sculpture



Sculpted pipi shell



Creating the shell cubby house

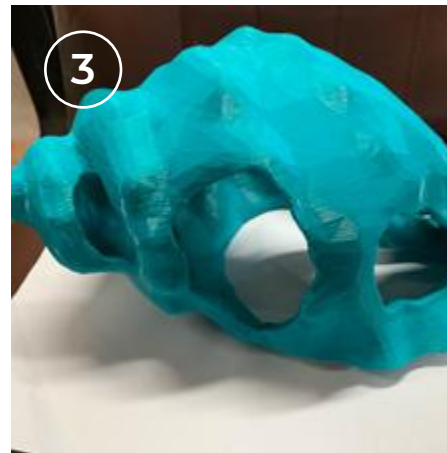
Follow the creative process, from initial inspiration and modelling through to construction, sculpting and finishing.



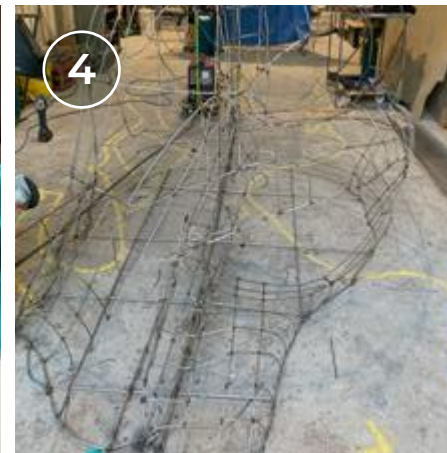
1 Inspiration: fossilised shell



2 Small clay prototype



3 Detailed prototype model



4 Steel substructure



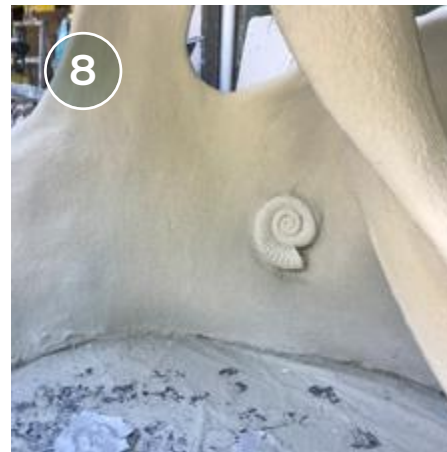
5 Wire mesh over substructure



6 GFRC concrete added to frame



7 Exterior surface texture and details



8 Interior surface texture and details



9 Natural looking finish



10 Sculpture installed on site



Sculpting sea urchins

The sea urchins were made by casting segments in heavy duty fibreglass and joining them together to form the completed sculptures. We finished them with a natural look that blends with the marine environment.



Mould for a segment of the sea urchin



In the workshop



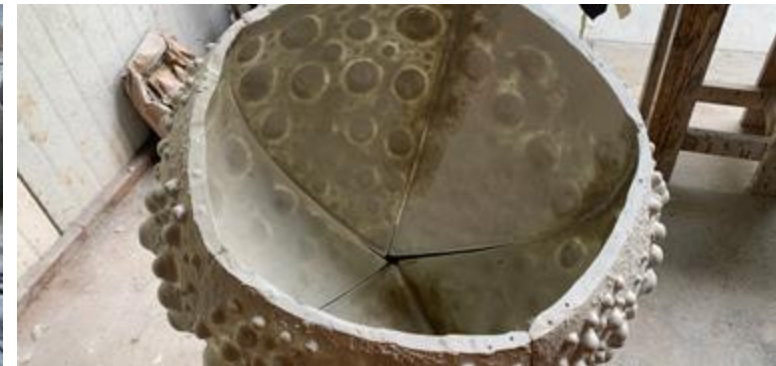
Joining segments to create the complete shape



Sea urchins after painting



Sea urchins (upside down)



View inside, showing the five segments



Close-up view of the exterior join



Pipi shells

These beautiful pipi shell sculptures reflect the playground's marine theme and act as steppers or small seats. A pipi is a small bivalve mollusc that is common around the island and at other sandy beaches in Australia.

These photographs show the pipi shells at various stages of production, from fibreglass mould and casting through to finishing.





Beautiful loggerhead turtle sculpture

Our play sculpture of a loggerhead turtle was a natural choice for this marine-themed playground. The oceans around North Stradbroke Island contain 6 of the world's 7 species of sea turtles. Loggerhead turtles, an endangered species, nest every year on beaches not far from the playground.

The heavy duty fibreglass turtle sculpture is easily climbable by young children. Its presence in the playground acts a reminder for young and old to preserve our wonderful natural ecosystems.



Photograph of a real loggerhead turtle making its way onto the beach



Loggerhead turtle sculpture in the Natureworks studio

Close-ups showing realistic natural details

The beauty of nature-based play

Our creative play sculptures inspired by Mother Nature turn kids onto the wonders of the natural world, especially when set in a beautiful environment such as North Stradbroke Island.

Contact Natureworks to discuss your vision for a nature-inspired play space, childcare centre, leisure facility, educational display or visitor attraction.