

A TRANSPARENT GUIDE & OVERVIEW OF THE

IIF – IMPACT INNOVATION FOUNDATION

A PUBLIC 501(C)(3) NON-PROFIT

INNOVATION

RESEARCH

APRIL 2023

CONCEPT

CONTENTS



**Impact
Innovation
Foundation**

3

Introduction: A Call for Impact

4

Section 1: Inception and Vision

6

**Section 2:
Driving Innovation for Social Impact**

10

Section 3: Impact Innovation Areas

12

**Section 4:
The Human Capital Initiative (HCI)**

13

**Section 5:
Collaboration & Partnerships**

14

**Section 6:
Donor Recognition & Impact**

16

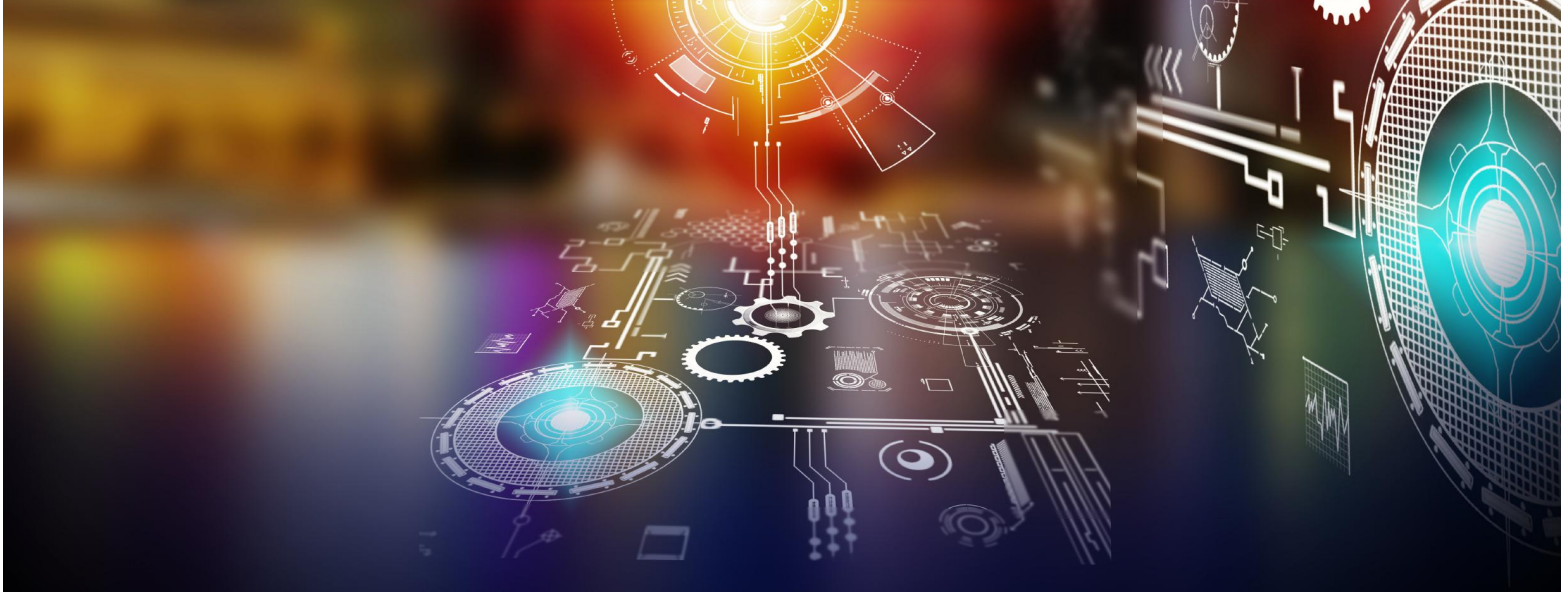
**Section 7:
Future Perspectives & Goals**

22

Conclusion: A World Transformed

24

FAQs



INTRODUCTION: A CALL FOR IMPACT

In a world where pressing social challenges persist, there arises a call for individuals and organizations to step forward and create meaningful change. This call is answered by the Impact Innovation Foundation, a beacon of hope and catalyst for transformation. In this overview guide, we invite you to embark on a journey that explores the Foundation's mission, initiatives, and the incredible impact it will make in various social impact areas.

At the core of the IIF - Impact Innovation Foundation lies a resolute commitment to driving innovation and collaboration for social impact. We believe that the power to effect change lies within the collective potential of social impact startups and organizations. By providing the necessary financial resources, support, and education, we empower these changemakers to create innovative solutions and improve lives around the world.

Through the pages of this guide, you will discover the five impact innovation areas that IIF focuses on: climate change, education, health, youth mental health, and technology for human betterment. These areas encompass critical societal challenges that demand urgent attention and action. We delve into the transformative power of each area and explore the innovative solutions that emerge from within.

One of IIF's cornerstone initiatives is the Human Capital Initiative (HCI), a program designed to unlock the potential of social impact startups and organizations. Through mentorship, education, and funding, the HCI serves as a catalyst for growth, providing a supportive ecosystem for innovators to thrive and create lasting change.

Ultimately, this guide serves as a call to action, an invitation for individuals and organizations to join us in our mission. Together, we have the power to unleash innovation, disrupt the status quo, and make a lasting impact on the world. Let us embark on this journey, fueled by passion, empathy, and a collective desire for a brighter and more equitable future. The time for impact is now.



Section 1: Inception & Vision

In the beginning, there was a vision—a vision of a world where social impact was at the forefront of innovation and progress. It was within this context that the Impact Innovation Foundation (IIF) came to life. Central to IIF's inception is the unwavering belief that positive change can be achieved through innovation, collaboration, and collective action. The foundation was built upon principles rooted in empathy, resilience, and a shared commitment to creating a better future for all.

Driven by a deep understanding of the world's pressing social challenges, IIF was born out of the recognition that traditional approaches alone could not address the complex and interconnected issues we face today. Recognizing that no single entity or organization can tackle global challenges alone, IIF sought to build a diverse and inclusive ecosystem of change-makers. By bringing together subject matter experts, visionaries, and resources from various sectors, IIF fosters cross-pollination of ideas and the exchange of best practices, ultimately amplifying the impact of social entrepreneurs around the world.

One of the IIF's cornerstone initiatives is the Human Capital Initiative (HCI), a program designed to unlock the potential of social impact startups and organizations. Through mentorship, education, and funding, the HCI serves as a catalyst for growth, providing a supportive ecosystem for innovators to thrive and create lasting change.

The vision that gave birth to IIF continues to guide its work to this day. It is a vision where innovation is harnessed as a force for good, where technology and ideas are used to improve lives, and where social impact is integrated into the fabric of society. Through its programs, initiatives, and strategic partnerships, IIF strives to make this vision a reality.

As we embark on this journey, let us remember the roots of IIF's inception—a belief in the power of innovation, collaboration, and collective action. Together, we can shape a future where social impact thrives, communities flourish, and every individual has the opportunity to thrive. It is within this shared vision that IIF stands, ready to drive transformative change and create a world that truly leaves no one behind.





Section 2: Driving Innovation For Social Impact

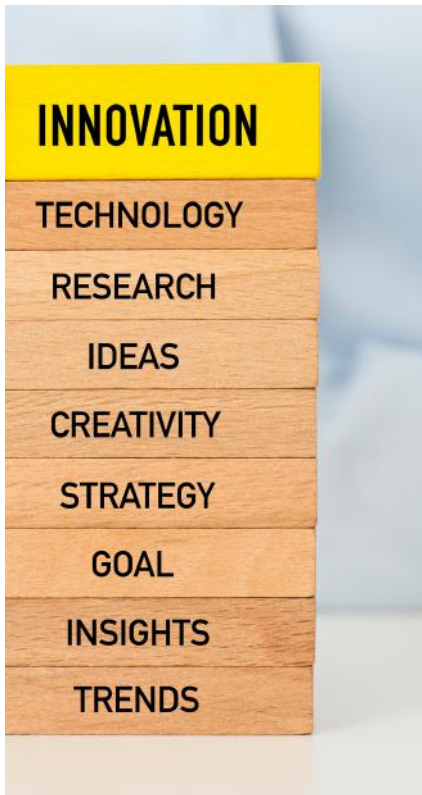
In a rapidly evolving world, innovation has become an indispensable force for driving social change and addressing pressing challenges. This section delves into the transformative power of innovation and its pivotal role in shaping a better future for all.

At IIF, we recognize that innovation is not simply about technological advancements, but rather a mindset that encourages new ways of thinking, problem-solving, and creating positive change. It is through innovative approaches that social impact startups and organizations can make a profound impact on society.

From groundbreaking technologies to novel approaches in education and sustainable practices, IIF's goal is to inspire others to reimagine the possibilities and push the boundaries of what is considered possible. We believe that by bringing together diverse perspectives, expertise, and resources, we can foster an environment where ideas flourish, breakthroughs are made, and collective solutions are developed.

Our hope is that through this exploration, you will come to appreciate the profound impact that innovation can have on transforming lives, communities, and even entire systems. It is a call to action for individuals, organizations, and society as a whole to embrace innovation as a driving force for positive change and to collectively forge a path towards a more inclusive, sustainable, and equitable world.

Join us as we delve into the power of innovation for social impact and unlock the endless possibilities that lie within our reach. Together, we can drive innovation, disrupt the status quo, and create lasting change that transcends boundaries and positively impacts the lives of millions globally. Let us embark on this transformative journey and harness the power of innovation to shape a brighter future for all.



Section 3: Impact Innovation Areas

In the pursuit of creating a better world, IIF recognizes that social impact is multi-faceted and requires a targeted approach. This section delves into the five impact innovation areas that lie at the heart of our Foundation's mission: climate change, education, health, youth mental health, and technology for human betterment.

Let's explore the unique challenges and opportunities presented by these impact areas. From the urgency of addressing climate change to the transformative power of education, we'll delve into the critical importance of focusing on these key domains to create lasting change.



CLIMATE CHANGE

The Impact Innovation Area of climate change is one of the most urgent and pressing challenges of our time. Climate change poses significant threats to our planet, ecosystems, and human societies. It is a complex issue that requires innovative solutions to mitigate its impact and build a sustainable future.

Within this impact area, IIF is committed to supporting and amplifying innovative initiatives that address climate change at various levels. This includes both mitigation efforts to reduce greenhouse gas emissions and adaptation strategies to build resilience against the changing climate.



We collaborate with social impact startups and organizations that are developing groundbreaking technologies, sustainable practices, and innovative approaches to combat climate change. These innovators are working on renewable energy solutions, sustainable agriculture practices, waste management systems, climate-smart infrastructure, and more.

By focusing on climate change as an impact area, we aim to drive innovation that can lead to transformative change. We believe in the power of technology,



research, and collaboration to create scalable and sustainable solutions that can reduce our carbon footprint, protect natural resources, and create a more resilient future.

Through the support and funding provided by IIF, social impact startups and organizations are empowered to bring their innovative ideas to fruition. By highlighting the importance of climate change and providing resources, mentorship, and partnerships, we foster an ecosystem that nurtures and accelerates impactful innovations.

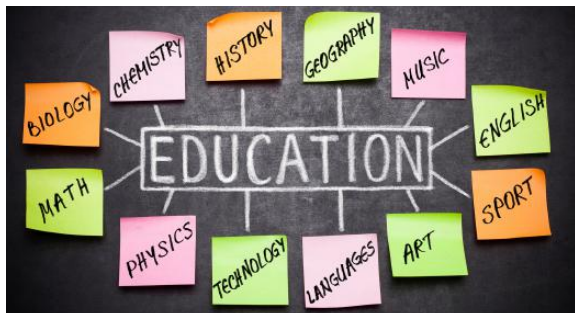
Together, we can make a significant impact on climate change. By supporting innovative solutions, advocating for sustainable practices, and raising awareness, we can create a world that is more resilient, environmentally conscious, and better equipped to combat the challenges posed by climate change. The time for action is now, and through the collective efforts of the Impact Innovation Foundation and its partners, we can drive the innovation needed to address climate change and create a sustainable future for generations to come.



EDUCATION

The Impact Innovation Area of education holds immense potential to shape a brighter future for individuals and societies. Education is the key to unlocking human potential, fostering social mobility, and addressing systemic inequalities. At IIF, we recognize the transformative power of education and are committed to supporting innovative approaches that revolutionize learning and expand access to quality education for all.

Within this impact area, we collaborate with social impact startups and organizations that are reimagining education systems, pedagogical methods, and learning technologies. These



innovators are developing solutions that cater to diverse learning needs, bridge educational gaps, and empower individuals to acquire the knowledge and skills necessary for success in the 21st century.

Through our support and funding, we enable the development of educational technologies, digital platforms, and innovative programs that enhance learning outcomes, foster critical thinking, and promote lifelong learning. We aim to harness the potential of technology to create inclusive and equitable education



ecosystems, where individuals from all backgrounds have equal opportunities to thrive and succeed.

Additionally, we prioritize initiatives that address educational disparities and promote access to education in underserved communities. By partnering with social impact organizations focused on educational equity, we strive to remove barriers to education and ensure that every individual, regardless of their socio-economic background, has the opportunity to receive a quality education.

By focusing on education as an impact area, we aim to create a ripple effect of positive change. When individuals are equipped with knowledge and skills, they become agents of transformation, driving progress in their communities and contributing to the advancement of society as a whole.

Through the collective efforts of IIF, our partners, and the innovative startups and organizations we support, we can reimagine education and shape a future where learning is personalized, accessible, and inclusive. Together, we can break down barriers, inspire lifelong curiosity, and empower individuals to reach their full potential through the power of education.

MENTAL HEALTH (YOUTH)

The Impact Innovation Area of youth mental health is of critical importance in today's world. The mental well-being of young people plays a significant role in their overall development, academic success, and future prospects. At IIF, we recognize the pressing need to address the challenges faced by young individuals in terms of their mental health and well-being.

Within this impact area, we work closely with social impact startups and organizations that are dedicated to improving the mental health outcomes of youth. These innovators develop innovative solutions and interventions that



promote mental wellness, provide access to mental health services, and support early intervention and prevention strategies.

Our focus is on destigmatizing mental health, raising awareness, and promoting mental health literacy among young individuals, their families, and the broader community. We aim to create supportive environments that foster resilience, emotional well-being, and positive mental health practices.



Through partnerships and collaborations, we support the development of digital platforms, mobile applications, and online resources that provide youth with easily accessible tools for managing stress, building resilience, and seeking help when needed. We also prioritize initiatives that address the unique mental health challenges faced by marginalized and underserved populations, ensuring that mental health support is inclusive and equitable.

By investing in youth mental health, we are investing in the future well-being of individuals and communities. By addressing mental health challenges early on, we can prevent long-term negative impacts and empower young individuals to lead healthy, fulfilling lives.

Through our collective efforts, we can break down the barriers that prevent youth from accessing mental health support, provide them with the necessary tools and resources, and create a culture that prioritizes mental well-being. Together, we can foster a generation of mentally resilient and thriving young individuals who are equipped to overcome challenges and contribute positively to society.

TECHNOLOGY FOR HUMAN BETTERMENT

Harnessing Technology for Global Transformation

In a world driven by innovation, IIF introduces a spectrum of impact areas where technology redefines possibilities. This section explores the profound potential of harnessing Emerging Innovations, Artificial Intelligence, XR / VR, Web3, and Spatial Computing to create positive change and improve lives on a global scale.

Emerging Innovations: Shaping the Future Today

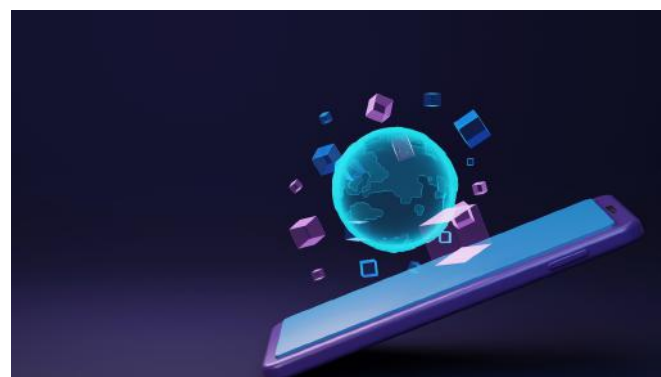
The landscape of emerging innovations holds boundless potential to revolutionize industries and uplift societies. From breakthroughs in biotechnology to advancements in renewable energy and beyond, IIF is committed to nurturing and accelerating the adoption of innovations that pave the way for sustainable progress. By investing in research, supporting startups, and fostering collaboration, we aim to drive innovation that addresses pressing global challenges and enhances human well-being.

Artificial Intelligence: Unleashing the Power of Intelligent Solutions
Artificial Intelligence (AI) is ushering in a new era of intelligent automation, data-driven insights, and transformative problem-solving. IIF recognizes the profound impact of AI across sectors, from health to education, and seeks to leverage its potential to create smarter, more efficient, and inclusive systems. By partnering with AI innovators, conducting research, and promoting AI ventures, we aim to harness the power of AI for the betterment of societies worldwide.

XR / VR: Immersive Technologies, Empowered Experiences

Extended Reality (XR) and Virtual Reality (VR) are reshaping how we experience the world and interact with information. These immersive technologies have applications ranging from education to mental health support, enabling us to step into new perspectives and learn, heal, and connect like never before. IIF's focus on XR / VR is a commitment to democratize access to these technologies, ensuring that their benefits are accessible to all and contributing to the advancement of a more inclusive and empathetic society.

Web3 and Spatial Computing: Navigating a Decentralized Future
Web3 and Spatial Computing are at the forefront of reshaping digital landscapes. Decentralized technologies are fostering trust, ownership, and transparency, while Spatial Computing is transforming the way we perceive and interact with our environment. IIF recognizes the potential of these technologies to revolutionize industries, governance, and social interactions. By promoting research, education, and innovation in these domains, we aim to contribute to a more decentralized, interconnected, and equitable future.



HEALTH

In the pursuit of holistic well-being, the IIF introduces a new frontier of impact: Health. This section delves into the transformative potential of Med-Tech (Medical Technology), Emergency Medical Services (EMS), and Emerging Health Innovations.

Med-Tech Revolution: Pioneering Medical Breakthroughs

Medical technology has become a cornerstone of modern healthcare, driving breakthroughs that redefine the diagnosis, treatment, and management of diseases. From wearable health monitors to telehealth solutions, Med-Tech empowers individuals to take charge of their health and offers healthcare providers unprecedented insights. IIF's commitment to Med-Tech aims to accelerate the development and adoption of innovative devices, diagnostics, and treatments, ultimately improving patient outcomes and revolutionizing healthcare delivery.

Emergency Medical Services (EMS) Transformation:

Emergency Medical Services are the lifeline in times of crises, and innovation in this realm can be the difference between life and death. Through advanced telemedicine, drone-assisted response, and real-time communication systems, EMS can become more efficient, timely, and life-saving. IIF's focus on EMS innovation aims to ensure that emergencies are met with swift and effective responses, reducing response times, and optimizing care during critical moments.

Emerging Health Innovations: Unveiling New Possibilities

The health sector is rapidly evolving, with emerging innovations such as genomics, precision medicine, and regenerative therapies offering promising avenues for personalized and targeted healthcare. By leveraging these innovations, IIF envisions a future where diseases are detected and treated at their earliest stages, therapies are tailored to individual needs, and regenerative medicine transforms the way we approach healing. Through research, partnerships, and innovation programs, we are committed to driving the adoption of emerging health technologies that can reshape the healthcare landscape.





Section 4:

The Human Capital Initiative (HCI)

Within the realm of social impact, one key factor stands out above all else—the power of human capital. It is this transformative force that drives the Human Capital Initiative (HCI), a groundbreaking program developed by the Impact Innovation Foundation in partnership with GatherVerse Ventures. HCI empowers social impact startups and organizations by providing them with the essential resources, mentorship, education, and funding they need to thrive and make a lasting difference.

At HCI, we firmly believe in the transformative impact of mentorship, education, and funding. These pillars form the bedrock of our initiative, providing social impact innovators with the tools and support they require to propel their visions forward and achieve meaningful impact.

But HCI is more than just a program—it is a vibrant ecosystem of collaboration and empowerment. We bring together subject matter experts, visionaries, and resources from around the world to collectively address critical challenges, mentor startups, and drive positive

change. By fostering a collaborative nature, we emphasize the importance of partnerships and collective efforts in realizing true social impact.

Through HCI, we celebrate the extraordinary potential that emerges when diverse perspectives, expertise, and resources converge. It is within this collaborative environment that social impact startups and organizations flourish, creating innovative solutions that address pressing global challenges. Together, we embark on a journey of collective impact, fueled by the power of human capital.

Join us as we venture into the realm of the Human Capital Initiative, a game-changing program that recognizes the immense value of human capital in driving social change. Together, we can unlock the true potential of social impact startups and organizations, empowering them to create a better world for all. Let us embrace the power of human capital and embark on a transformative journey of collective impact through HCI.

SECTION 5:

COLLABORATION & PARTNERSHIPS



In this section, we explore the vital role of collaboration and partnerships in driving social impact. At IIF, we understand that no single entity can effectively address the complex challenges facing our world today. It is through the power of collaboration and the transformative potential of partnerships that we can truly make a difference.

Our philosophy revolves around the belief that true impact is achieved through the collective efforts of diverse stakeholders. We celebrate the power of collaboration in breaking down silos, fostering knowledge-sharing, and amplifying the impact of social impact startups and organizations. By working together, we can achieve far greater results than we could ever achieve alone.

The Foundation's unwavering commitment to forging strategic partnerships with subject matter experts, thought leaders, and philanthropic organizations is a testament to our shared vision and collaborative spirit. These partnerships will result in groundbreaking initiatives with far-reaching impact, addressing critical social issues and driving positive change.

Join us as we delve into the power of collaboration and partnerships, and discover how these synergies can amplify our impact and create lasting change. Together, we can forge a path towards a more equitable, sustainable, and compassionate world. Let us embrace the power of collaboration and partnerships to create a future that truly reflects our shared values and aspirations.

SECTION 6: DONOR RECOGNITION & IMPACT

Donors are the driving force behind the mission and impact of the Impact Innovation Foundation. Your generosity and support create transformative change that reverberates throughout society. In this section, we extend our heartfelt gratitude and recognition to the individuals, corporations, and organizations whose contributions make it all possible.

At the Foundation, we believe in honoring and celebrating the invaluable support we receive. We provide various levels of donor recognition, from heartfelt acknowledgments to public tributes, showcasing our deep appreciation for their commitment to our cause. Each donation, regardless of its size, has the power to ignite change and create a ripple effect of philanthropy.

Through donor support, we will be able to initiate and sustain numerous projects, initiatives, and programs that will have a lasting legacy of positive impact. We strive to celebrate the collective achievements made possible through the collaboration between the Impact Innovation Foundation and our dedicated donors. Together, we showcase the profound difference that each contribution makes and underscore the importance of collective action in driving social change.

By supporting the Foundation, donors not only play a pivotal role in driving innovation and impact but also

become part of a dynamic community of like-minded individuals committed to creating a better world. Your contributions amplify our reach, ensuring that more social impact startups and organizations receive the vital support they need to succeed.

Join us in celebrating the profound impact of our donors and discover the countless ways in which you can make a difference. Together, we can create a future where social impact thrives, communities flourish, and every individual has the opportunity to live a life of dignity and purpose.



DONOR LEVELS - PERKS OF GIVING

\$2,500,000+ LEVEL

- Name/Logo and link to website on Donor Page under current year
- 12 Months: Logo on Zoom Virtual Networking Session Background
- 12 Months: Logo on Recorded and Archived Zoom Virtual Training Session Background
- 12 Months: Logo and Link in the footer of Newsletter Emails
- 12 Months: Logo on Human Capital Membership Certificates, Startup Certificates when they complete Education and Fellowship Cohorts
- Sponsor of 2 Human Capital Summit Events
- 3 Advisory Board Seats; Logo In Footer of iif.community (displayed on all pages)

\$1,000,000 LEVEL

- Name/Logo and link to website on Donor Page under current year
- 12 Months: Logo on Zoom Virtual Networking Session Background
- 12 Months: Logo on Recorded and Archived Zoom Virtual Training Session Background
- 12 Months: Logo and Link in the footer of Newsletter Emails
- 12 Months: Logo on Human Capital Membership Certificates, Startup Certificates when they complete Education and Fellowship Cohorts
- Sponsor of 2 Human Capital Summit Events
- 1 Advisory Board Seat; Logo In Footer of iif.community (displayed on all pages)

\$500,000 LEVEL

- Name/Logo and link to website on Donor Page under current year
- 12 Months: Logo on Zoom Virtual Networking Session Background
- 12 Months: Logo on Recorded and Archived Zoom Virtual Training Session Background
- 12 Months: Logo and Link in the footer of Newsletter Emails
- 12 Months: Logo on Human Capital Membership Certificates, Startup Certificates when they complete Education and Fellowship Cohorts
- Sponsor of 2 Human Capital Summit Events

\$250,000 LEVEL

- Name/Logo and link to website on Donor Page under current year
- 12 Months: Logo on Zoom Virtual Networking Session Background
- 12 Months: Logo on Recorded and Archived Zoom Virtual Training Session Background
- 12 Months: Logo and Link in the footer of Newsletter Emails
- 12 Months: Logo on Human Capital Membership Certificates, Startup Certificates when they complete Education and Fellowship Cohorts
- Sponsor of 1 Human Capital Summit Event

\$100,000 LEVEL

- Name/Logo and link to website on Donor Page under current year
- 12 Months: Logo on Zoom Virtual Networking Session Background
- 12 Months: Logo on Recorded and Archived Zoom Virtual Training Session Background
- 12 Months: Logo and Link in the footer of Newsletter Emails
- 12 Months: Logo on Human Capital Membership Certificates, Startup Certificates when they complete Education and Fellowship Cohorts

\$50,000 LEVEL

- Name/Logo and link to website on Donor Page under current year
- 12 Months: Logo on Zoom Virtual Networking Session Background
- 12 Months: Logo on Recorded and Archived Zoom Virtual Training Session Background
- 12 Months: Logo and Link in the footer of Newsletter Emails

\$25,000 LEVEL

- Name/Logo and link to website on Donor Page under current year
- 12 Months: Logo on Zoom Virtual Networking Session Background
- 12 Months: Logo on Recorded and Archived Zoom Virtual Training Session Background

\$10,000 LEVEL

- Name/Logo and link to website on Donor Page under current year
- 12 Months: Logo on Zoom Virtual Networking Session Background

\$5,000 LEVEL

- Name/Logo and link to website on Donor Page under current year

<\$5,000 LEVEL

- Name listed on Donor Page under current year

SECTION 7:

FUTURE PERSPECTIVES & GOALS

In the ever-changing landscape of social impact, IIF sets its sights on the future with unwavering determination and an unyielding commitment to driving positive change. This section takes you on a journey into IIF's future perspectives, ambitious goals, and the exciting possibilities that lie ahead. As we explore emerging technologies, global challenges, and the evolving needs of communities, we envision a future where agility, collaboration, and impact-driven solutions shape a better world for all.



1. TACKLING GLOBAL CHALLENGES: UNITED FOR A BETTER FUTURE

The world faces an array of pressing challenges, from climate change to poverty, from mental healthcare disparities to inequality. IIF recognizes the urgent need to tackle these challenges head-on and build a more equitable and sustainable future. We believe in the power of collaboration and collective action to address these complex issues. By forging partnerships with governments, NGOs, and corporate entities, we aim to create a global network of change-makers dedicated to driving social impact. Through cross-sector collaboration and innovative solutions, we will confront global challenges, inspire systemic change, and leave a lasting legacy for future generations.



2. EVOLVING COMMUNITY NEEDS: EMPOWERMENT, TRANSFORMATION OF LIVES

Communities are dynamic entities with evolving needs and aspirations. IIF is committed to staying attuned to these changing dynamics and adapting its programs and initiatives accordingly. By engaging with communities and understanding their unique challenges and aspirations, we can co-create solutions that truly make a difference. Whether it's supporting local entrepreneurs, fostering education, or improving access to healthcare, IIF is dedicated to empowering communities and ensuring their voices are heard. Through grassroots initiatives, capacity building, and targeted investments, we strive to catalyze positive change at the community level and uplift individuals to reach their full potential.

3. THE FUTURE IS NOW: STRATEGIC ROADMAP

We invite you to embark on a journey into the future of IIF and our unwavering commitment to driving social impact. We'd like to offer you a glimpse into the Foundation's visionary perspectives, ambitious goals, and the exciting possibilities that lie ahead. Explore the Foundation's strategic roadmap and its dedication to continuous innovation and adaptation. We are venturing into the ever-evolving landscape of social impact and want to be transparent on how the Foundation aims to remain at the forefront of driving positive change.

IIF has a big vision to achieve great things, impact the lives of millions, and help create social ventures that will in turn create new jobs. Although a huge undertaking, we have broken down our plan into 4 Phases.



Phase 1: Build

Hire and train internal personnel to build our Organizational Structure. We will Launch our Education & Business Fellowship Programs

Phase 2: Assess

Provide 'Launching Grants' to qualified alumni of our Education Program. Internally we will Assess & Refine by gathering feedback and making refinements to our Education and Fellowship programs to ensure we are being effective and make the best use of our staff and resources.



Phase 3: Fund

We will begin to financially support social impact startups under our Innovation Fund & Research Program. Once we Secure two-thirds of our Innovation Fund from donors and sponsors we will begin Accepting Applications & Fund Startups

Phase 4: Goal

We will Solidify our Long-Term Partnerships & Relationships to ensure the ongoing success of IIF post year three. We will also Conduct second Access & Refinement of All Programs to ensure we are being effective and make the best use of our staff and resources.

ROADMAP

1

Secure Pledge Partners & Donors To Build HCI Innovation Fund

From July 2023 to December 2023, IIF is looking to secure a minimum of 10 VC Pledge Partners to pledge \$15M to \$30M into the HCI Innovation Fund.

2

Organizational Structure

Month 1 – 8, IIF, X|ergy & Euromersive will be bringing on various positions across all departments to train and establish all process, procedures, and tracking for each department.

3

Education Program

In our 4th month, IIF, X|ergy & Euromersive will launch our first cohort of students to take our 12-week Live Virtual Course. Each cohort can handle up to 25 to 50 students and will run four times a year.

4

Business Fellowship Program

Month 6, IIF & X|ergy will launch our first cohort of startups in our 6-month Business Fellowship. Each cohort can handle up to 25 startups and will run two times a year.

5

Assess & Refine:

Based on the feedback from our first few cohort we will make refinements to our Education and Fellowship programs to ensure we are being effective and make the best use of our staff and resources.

6

HCI Innovation Fund Applications

In month 11, we will begin accepting applications for social startups in need of startup funding to begin to develop traction, test out their products, and acquire customers.

7

Secure VC Pledge Partners & Add To HCI Innovation Fund

By month 12, IIF will secure 11 new VC Pledge Partners to pledge \$15M to \$30M into the HCI Innovation Fund.

HCI Innovation Fund will add an additional \$132M where VC Partners will invest in Social Impact Startups.

8

Education Program Progress

By Month 24, we will have completed 7 cohorts in our Education Program educating 200+ individuals on structuring their innovative idea into a viable business plan.



9

Fellowship Progress

By Month 24, IIF & X|ergy will have completed 3 cohorts in our Business Fellowship Program working with up to 75 startups to prepare to launch into the market.

10

Secure VC Pledge Partners & Add To HCI Innovation Fund

By month 24, IIF will secure 15 new VC Pledge Partners to pledge \$15M to \$30M into the HCI Innovation Fund.

HCI Innovation Fund will add an additional \$180M where VC Partners will invest in Social Impact Startups.

11

\$24.9M into Social Startups

By month 25, the IIF's HCI Innovation Fund will have put 24.9 million dollars into viable social solutions, and we will have created research projects for each to measure the impact being made by funded startups.

12

Education & Fellowship Progress

By Month 36, we will have run 11 Education Program Cohorts educating 300+ individuals and 5 Business Fellowship Cohorts preparing up to 125 startups to enter the market.



\$37.8M into Social Impact Startups

By month 36, IIF's HCI Innovation Fund will have put 37.8 million dollars into viable social solutions, and we will have created customized research projects to measure the impact being made by funded startups.

Secure VC Pledge Partners & Add To HCI Innovation Fund

By month 36, IIF will secure 15 new VC Pledge Partners to pledge \$15M to \$30M into the HCI Innovation Fund.

HCI Innovation Fund will add an additional \$180M where VC Partners will invest in Social Impact Startups.



4. A CALL TO JOIN THE JOURNEY

We invite you to embark on a journey into the future of the Impact Innovation Foundation and our unwavering commitment to driving social impact. As we navigate emerging technologies, tackle global challenges, and respond to evolving community needs, we stand united in our pursuit of a better tomorrow. Together, we can shape a future where innovation, collaboration, and impact intersect to create positive change. Join us as we write the next chapter of the social impact story and build a world where everyone has the opportunity to thrive. With the Impact Innovation Foundation leading the way, the possibilities for social impact are boundless, and the potential to transform lives and communities

Conclusion

A WORLD TRANSFORMED



In the conclusion of this transformative journey, we reflect on the profound impact that will be created by the Impact Innovation Foundation and our unwavering commitment to driving social change. We celebrate the collective achievements, the lives transformed, and the communities empowered through innovation, collaboration, and philanthropy.

Throughout this book, we have witnessed the power of impact innovation—how it will shape the lives of individuals, address critical social issues, and pave the way for a more equitable and sustainable future. The Impact Innovation Foundation is moving to the forefront of this movement, serving as a catalyst

22 for change, an incubator of ideas,



and a driving force behind the success of social impact startups and organizations.

As we conclude our exploration, we are reminded of the extraordinary potential that lies within each one of us. We have seen how a single idea, supported by the right resources, mentorship, and collaboration, can transform into a movement that touches the lives of millions. We ask you to join us as we witness the ripple effects of innovation, extending far beyond our initial vision and reaching the corners of the world that need it most.

The Impact Innovation Foundation stands as a beacon of hope, a testament to what can be achieved when passion, purpose,

and commitment converge. IIF will become a catalyst for a world where innovation thrives, where collaboration bridges divides, and where social impact becomes the driving force behind positive change.

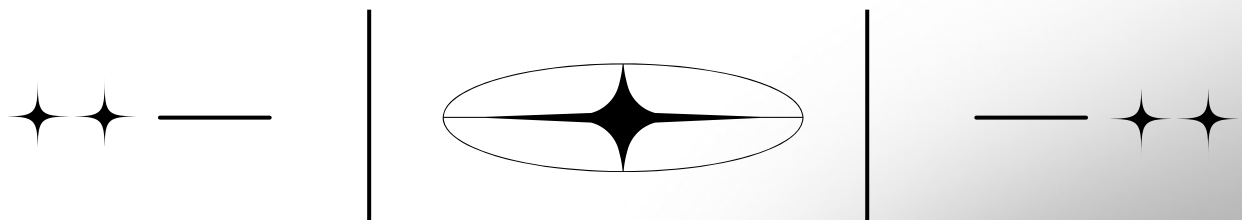
In closing, we invite you to become part of this extraordinary journey. Join us as we continue to forge new paths, nurture innovation, and amplify the impact we can make together. Your support, whether through donations, partnerships, or volunteering, has the power to shape a better future—one where social impact startups and organizations thrive, and where the potential of every individual is realized.

Together, let us create a world



transformed, where innovation, compassion, and collaboration reign supreme. The journey towards a better tomorrow starts with each one of us, and as we join hands, there is no limit to what we can achieve. Thank you for being a part of this incredible story, and we look forward to the continued transformation we will create together.

This is not the end—it is the beginning of a new chapter in the story of Impact Innovation Foundation and the limitless possibilities of impact innovation.



FAQs

Is IIF a Nonprofit?

Yes, IIF- Impact Innovation Foundation is a public 501(c)(3) tax-exempt nonprofit organization. All donations and funds received are tax-deductible within the guidelines of U.S. law. Our EIN is 88-1212423.

Is IIF Active on SAM.gov?

Does IIF have an active SAM.gov registration?

Yes.

[Click to confirm our active status and obtain our UEI & Cage Number.](#)

Is IIF On CyberGrants?

Has IIF been vetted by Front Door CyberGrants?

Yes, IIF is an active Nonprofit on their platform.

Are 990s Public?

Where can I see IIF's most recent 990 and donor report?

IIF is in our first year of raising funds; however, all future 990s are public on our Candid Platinum Transparency Profile.

[Click To View Our Profile](#)

How Are Funds Used

- 30% - Business Education & Fellowship Programs
- 37% - Goes Into Startups to Launch & Build Traction
- 28% - Supports News Teams & Research Teams To Measure Impact Made By Funded Startup
- 5% - Managements of HCI

2 MISC Questions

When donating to IIF, what are the Perks of Giving?

[Click To View our Perks of Giving](#)

What is IIF's 3 Year Plan

[Click to View Plan with Financials](#)

Giving Options

What is the difference between donating and pledging into IIF's HCI Innovation Fund?

Donations are one time or annual reoccurring donations in any amount.

Pledges are made by VCs and Companies looking to partner with IIF. Companies pledge a minimum of \$5M while VCs pledge a minimum of \$15M over the course of 3 years. 20% of pledge is donated directly to IIF as a tax deductible donation up front.

In an Agreement Letter, Pledge Partners state the remaining 80% of pledge is invested directly into social impact startups that finish our programs to build traction.

How To Give

How does IIF receive donations or pledge funds?

ACH - [Click To View ACH Form](#)

Companies who give via CyberGrants' Portal may give to IIF through their usual corporate giving method.

By Check - Mailed to:
Impact Innovation Foundation
C/O HCI Team
440 N Barranca Ave, Suite #4774X
Covina, CA 91723

Online Donation Form
[Click To View Form](#)

IIF's HCI Advisory Council

[Click To Learn About Our HCI Advisory Council.](#)

Pledge Partner Benefits

What are the benefits of becoming a Pledge Partner?

VCs receive a direct return on investment from their tax donation (20% of Pledge). We provide an avenue to get both a tax write off and an investment vehicle with deal flow. Your pledge is a strategic move to safeguard your future investments. It fuels innovation, nurtures startups, and mitigates future investment risks. While companies become Pledge Partners to ensure their alumni receive the education and mentorship needed to take their solutions to market and emerge from our programs ready to test their venture and build traction.

[Click To View VC Pledge Partner Invitation](#)

[Click To View Company Pledge Partner Invitation](#)

Join us on this remarkable journey to forge a more equitable, innovative, and impactful world.

info@impactinnovationfoundation.org

Diane Tucker, CEO