

MERIDIAN LIBRARY DISTRICT

Programs and Events

DECEMBER 2023 - FEBRUARY 2024

Scan the QR code for a digital copy of our newsletter!



Get crafty at the library!

- ◆ Rock Painting with Miss Amy - p. 5
- ◆ Teen Holiday Card Workshop - p. 6
- ◆ Adult Craft Club - p. 8
- ◆ Winter Craft Party - p.10



Find more information and register online!
mld.org/events

Who We Are: The Meridian Library District serves the fastest-growing community in Southern Idaho. We offer five public library locations, with new projects on the way. Our staff is committed to enriching lives, igniting curiosity, and cultivating connections in our community.

Get a Library Card: Ask at your local branch or visit mld.org/cards. It's free and there are no late fees.

Request Accommodations: Meridian Library District makes every effort to ensure our programs can be enjoyed by all. Contact the library at least 72 hours in advance of the event so that we may make any needed accommodation.

WEBSITE: mld.org

SOCIAL: @meridianlibrary



Hello, Neighbors!

Winter is here and the cold weather is moving in on the Meridian Library. That means cozying up with a good book or, my favorite activity, spending my evenings at the ice hockey rink.



I'm an avid hockey fan and developed the Winter Reading Program in partnership with the Idaho Steelheads. I love introducing others to my favorite pastime and can't wait for the Winter Reading Program to start!

Angie

Angie is an Associate Librarian at the Meridian Library at Cherry Lane. She has worked at Meridian Library District for 1 1/2 years after working in Education for 25 years, where she worked with children ranging in ages from 3-21 years old.

Angie's Recommended Reads

Knight Owl—I love the story of the brave little owl who figures out different ways to defend the castle against the dragon — and the beautiful illustrations.

Night Tree—A book that celebrates a family tradition focused on giving back to others and celebrating the meaning behind the holidays.

Ground Zero—A historical fiction novel that draws you in and brings you back to 9/11 and beyond by following two children and their journey to survive.



Have You Heard?



WINTER READING CHALLENGE

January 7 - March 9

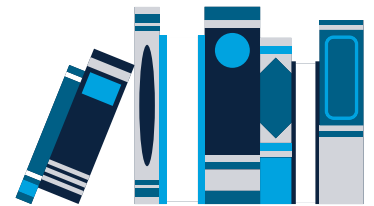
Participants ages 0-18 will build their hockey team as they track the minutes they read (or are read to).

Build your whole team by reading 1,500 minutes and receive a voucher to an Idaho Steelheads game on either March 22 or 23 while supplies last!

Winter Reading Kickoff

Join the Idaho Steelheads and Meridian Library District for our 2nd Annual Winter Reading Kickoff Party! Sign up for the Winter Reading Challenge, meet some Idaho Steelhead players, grab some fun swag, and enjoy a snack while testing your hockey knowledge and skills.

**Jan. 8 from 6:30-7:30 p.m.
at Cherry Lane Branch**



Read with a Steelhead

The Idaho Steelhead players will be visiting to read us a special hockey themed storytime. After the story will be a short meet and greet.

**Feb. 5 from 1:30-2:30 p.m.
at Orchard Park Branch**

Early Learners Programs

Ages 0-5

Childrens Program Break Dec. 17-31



Music Adventures with Paige Moore

Recommended for ages 0-5
Orchard Park Branch
Dec. 14: 6-7 p.m.

Fairy Tale Tea Party

Recommended for ages 0-5
Silverstone Branch
Jan 26: 10:30 a.m.-12 p.m.

Puppet Show

Recommended for ages 0-5
Silverstone Branch
Feb. 9: 10:30-11:30 a.m.

Super Sensory Storytime

Recommended for ages 0-5
Cherry Lane Branch
2nd Mondays
11 a.m.-12 p.m.
YMCA THRIVE Center
5155 S. Hillsdale Ave.
1st Mondays
11-11:45 a.m.
Registration Required

Storytime and Art

Recommended for ages 2-5
Silverstone Branch
Mondays
10:30-11:30 a.m.

Nature Storytime

Recommended for ages 2-5
Silverstone Branch
Tuesdays
10:30-11:30 a.m.

Pajama Storytime

Recommended for ages 0-5
Silverstone
Tuesdays
7-7:30 p.m.
Cherry Lane Branch
Thursdays
7-7:30 p.m.

Storytime with Ms. Gabby

Recommended for ages 2-5
Cherry Lane Branch
Tuesdays
10-10:30 a.m.

Take a look at our Baby Board Book Kits!

These kits are designed for parents and caregivers to check out and use in helping children with early literacy skills. Each kit specifies the ideal 3 month age range between 0-24 months.

Early Learners Programs

Ages 0-5

Children's Program Break Dec. 17-31

Baby Time

Recommended for ages 0-2

Cherry Lane Branch

Wednesdays

10-10:30 a.m.

Silverstone Branch

Thursdays

10:30-11 a.m.

Silly Song and Dance

Recommended for ages 0-5

Silverstone Branch

Wednesdays

9:30-10 a.m.

10:30-11 a.m.

Cherry Lane Branch

2nd and 4th Saturdays

10:30-11 a.m.



Kindergarten All-Stars

Recommended for ages 4-6

Cherry Lane Branch

Fridays (Jan. 26 - Mar. 1)

10-11 a.m.

Registration Required

Kindergarten Readiness Workshops with Lee Pesky Learning

For adults, in tandem with

Kindergarten All-Stars

Cherry Lane Branch

Feb. 16, Feb. 23, Mar. 1:

10-11 a.m.

Registration Required

Spanish English Storytime

Recommended for ages 0-5

Cherry Lane Branch

1st Saturdays

10:30-11 a.m.

Family Yoga

Recommended for ages 0-5

Cherry Lane Branch

3rd Saturdays

10:30-11 a.m.

An advertisement for parent workshops. It features a photograph of a family (a man, a woman, and a young girl) sitting on the floor and looking at a book together. There are colorful balloons (orange and teal) in the background. The text reads: "READY! for Kindergarten®", "PARENT WORKSHOPS", "Prepare Your Child For School Success. These FREE workshops show you how!", "Recommended for ages 0-1, 1-2", "Cherry Lane Branch", "(Ages 0-1) Dec. 6, Jan. 10, Feb. 7: 11:30 a.m.-1 p.m.", "(Ages 1-2) Dec. 13, Jan. 17, Feb. 14: 11:30 a.m.-1 p.m."/>

READY! for Kindergarten®

PARENT WORKSHOPS

Prepare Your Child For School Success.
These FREE workshops show you how!

Recommended for ages 0-1, 1-2

Cherry Lane Branch

(Ages 0-1) Dec. 6, Jan. 10, Feb. 7:
11:30 a.m.-1 p.m.

(Ages 1-2) Dec. 13, Jan. 17, Feb. 14:
11:30 a.m.-1 p.m.

School Aged Programs

Ages 5-12

Children's Program Break Dec. 17-31

Rock Painting with Miss Amy

Recommended for ages 6+

Silverstone Branch

Dec. 2: 10:30-11:30 a.m.

Fairy Tale Tea Party

Recommended for ages 6-12

Silverstone Branch

Jan 26: 4:30-5:30 p.m.

Puppet Show

Recommended for ages 6-12

Silverstone Branch

Feb. 9: 4:30-5:30 p.m.

Lego Brick Club

Recommended for ages 5+

Cherry Lane Branch

Mondays

4:30-5:30 p.m.

Orchard Park Branch

2nd and 4th Tuesdays

4:30-5:30 p.m.

Internet Safety for Kids

For grades 3rd-5th

Cherry Lane Branch

Tuesdays (Jan. 16-Feb. 13)

6:30-7:30 p.m.

Registration Required

LABrary

Recommended for ages 5-12

Silverstone

Tuesdays

2:30-3:30 p.m.

Cherry Lane Branch

Thursdays

4:30-5:30 p.m.

Pokémon Club

Recommended for ages 5-12

Orchard Park Branch

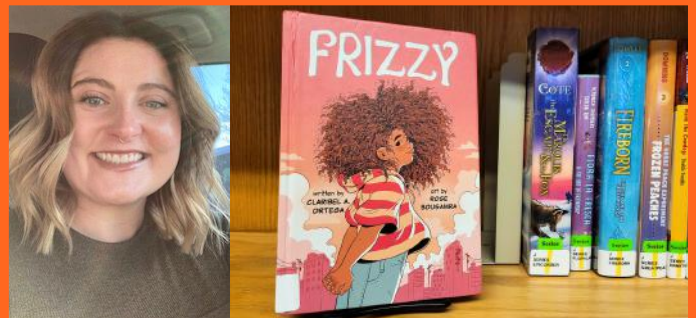
1st and 3rd Tuesdays

4:30-5:30 p.m.

Silverstone Branch

1st and 3rd Fridays

4:30-5:30 p.m.



Talley's Pick!

Frizzy by Claribel A. Ortega

Marlene is so lovable. Her struggles with personal identity, family and just growing up are relatable for everyone, I think.

Ready Readers

Recommended for ages 5-10

Silverstone Branch

1st and 3rd Thursdays

4:30-5 p.m.

Tales to Tails

Recommended for ages 5-12

Silverstone Branch

Thursdays

4:30-5:30 p.m.

Teen Programs

Ages 13-18

Teen Program Break Dec. 17-31

Holiday Card Workshop

unBound Branch

Dec. 9: 1-3:30 p.m.,
4-5 p.m.

Registration Required

3D Printing for Teens

unBound Branch

Jan. 6: 12-1:30 p.m.

VR Pop Up

unBound Branch

Jan. 6: 2-4 p.m.

Meridian After School Hangout (M.A.S.H)

Cherry Lane Branch

Every West Ada school day
3-5 p.m.

QSA

Silverstone Branch

Mondays
3:30-4:30 p.m.

Cherry Lane Branch

Tuesdays
3:30-4:30 p.m.

Graphic Novel Book Club

Silverstone Branch

2nd and 4th Wednesdays
4-5 p.m.

Teen Cooking

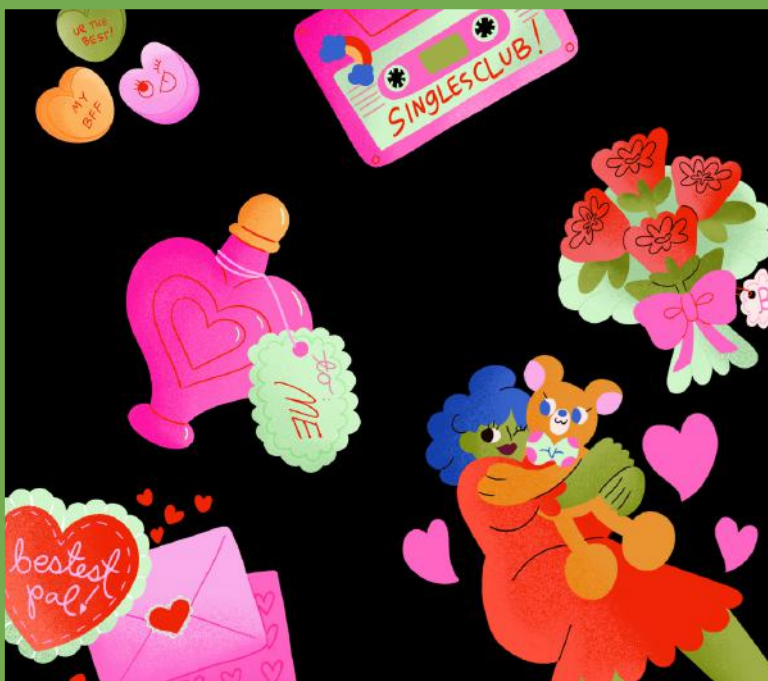
Cherry Lane Branch

3rd Wednesdays
3:30-4:30 p.m.

Manga Book Club

Cherry Lane Branch

3rd Thursdays
3:30-4:30 p.m.



Anti-Valentine's

Cherry Lane Branch

Feb. 9: 5:30-7:30 p.m.

Embrace singlehood with the Meridian Library at a special after-hours event.

Join us as we make ANTI-love potions, sing along to break-up karaoke ballads, and so much more!

Weekly Adult Programs

ASL Conversation Club

Recommended for ages 13+

Cherry Lane Branch

Mondays

6:30-7:30 p.m.

Fit and Fall Proof

Recommended for ages 55+

Cherry Lane Branch

Mondays and Thursdays

9:30-10:15 a.m., 10:45-11:30 a.m.

Registration Required

Writer's Bloc

Recommended for ages 18+

Cherry Lane Branch

Wednesdays, 6:30-7:30 p.m.

Yoga

Orchard Park Branch

Thursdays in January

6:30-7:30 p.m.



Book a Librarian

Would you like a personal introduction to resources available at the library? Do you need one-on-one help that will take more than a few minutes?

Visit mld.org/bookalibrarian



Book Clubs

Extreme Book Nerd Book Club

Recommended for ages 13+

Cherry Lane Branch

2nd Tuesdays

6-7 p.m.

Needles, Hooks, and Books

Recommended for ages 18+

Cherry Lane Branch

Thursdays

1-3 p.m.

Mystery Book Club

Recommended for ages 16+

Cherry Lane Branch

3rd Thursdays

6-7:30 p.m.

(Not) On the Same Page Book Club

Required age 18+

Locations Vary

Check out MLD.org/events to find where we'll be next!

Jan. 20, Feb. 17

7-8 p.m.

Monthly Adult Programs

Intro to Laser Engraving

Recommended for ages 18+

unBound Branch

1st Tuesdays 6-7 p.m.

3rd Fridays 10-11 a.m.

Registration Required

Medicare Playbook for Baby Boomers

Recommended for ages 55+

Cherry Lane Branch

2nd Tuesdays

6-7 p.m.

Lawyers in the Library

Recommended for ages 18+

Cherry Lane Branch

4th Tuesdays

5-7 p.m.

Registration Required

Beginner 3D

Recommended for ages 18+

unBound Branch

2nd Wednesdays

6-7:30 p.m.

Registration Required

Board Game Night

Recommended for ages 18+

Silverstone Branch

3rd Wednesdays

6:30-7:30 p.m.

Networking Breakfast

Recommended for ages 18+

unBound Branch

2nd Thursdays

7:30-9 a.m.

Registration Required

Memory Café

Recommended for ages 18+

Orchard Park Branch

3rd Thursdays

1-2:30 p.m.

Registration Required

Maker Minds Meetup

Recommended for ages 18+

unBound Branch

2nd Saturdays

10:30 a.m.-12 p.m.



Join fellow adults in a relaxed and friendly atmosphere to explore various crafting projects!

Adult Craft Club

Recommended for ages 16+

Orchard Park Branch

1st Saturdays

11 a.m.-12 p.m.

Cherry Lane Branch

2nd Saturdays

1-2:30 p.m.

Registration Required

One-Time Adult Programs

Senior Planet: Facebook (Lecture)

Recommended for ages 55+

Orchard Park Branch

Dec. 6: 12-1:15 p.m.

Registration Required

Medicare Workshop with the Idaho Department of Insurance

Recommended for ages 65+

Cherry Lane Branch

Dec. 12: 12-1:30 p.m.



Senior Planet: Getting Started with Facebook (Workshop)

Recommended for ages 55+

Orchard Park Branch

Dec. 13: 12-1:15 p.m.

Registration Required

CNC Creation Workshop

Recommended for ages 18+

unBound Branch

Dec. 16: 11a.m.-3 p.m.

Registration Required

Taxes for Small Business Lunch & Learn

Recommended for ages 18+

unBound Branch

Jan. 9: 12-1:30 p.m.

Registration Required

Retirement Planning Workshop: Don't Wait to Start!

Recommended for ages 18+

unBound Branch

Jan. 18: 4-5 p.m.

Registration Required

AI in Small Business Lunch & Learn

Recommended for ages 18+

unBound Branch

Jan. 22: 12-1 p.m.

Jan. 29: 12-1 p.m.

Feb. 5: 12-1 p.m.

Registration Required

Galentines with CriCut

Recommended for ages 18+

unBound Branch

Jan. 23: 5:30-8 p.m.

Registration Required

Crafting Effective Business Strategies

Recommended for ages 18+

unBound Branch

Jan. 24: 4-5:30 p.m.

Registration Required

AI in Small Business

Recommended for ages 18+

unBound Branch

Jan. 27: 12-1 p.m.

Feb. 3: 12-1 p.m.

Feb. 10: 12-1 p.m.

One-Time Adult Programs

Integrating Processes into Your Business

Recommended for ages 18+

unBound Branch

Feb. 7: 4-5:30 p.m.

Registration Required

New Business Bootcamp: Get Your LLC

Recommended for ages 18+

unBound Branch

Feb. 16: 10 a.m.-1 p.m.

Registration Required

Process + Strategy = Success

Recommended for ages 18+

unBound Branch

Feb. 21: 4-5:30 p.m.

Registration Required

CriCut Creations

Recommended for ages 18+

unBound Branch

Feb. 24: 11 a.m.-1 p.m.

Registration Required

Special Events *All Ages*

Winter Lights Parade

Downtown Meridian

Dec. 1: 7-9 p.m.

Bluey's Birthday Bash

Cherry Lane Branch

Dec. 15:

(Ages 0-12) 10-11:30 a.m.

(Ages 13+) 3:30-4:30 p.m.

Winter Craft Party

Cherry Lane Branch

Dec. 16: 2:30-4 p.m.

Extreme Book Nerd Kickoff Party

Cherry Lane Branch

Jan. 2: 6-7:30 p.m.



Harry Potter Yule Ball

Cherry Lane Branch

Jan. 12: 6:30-8 p.m.

LARP in the Library

Cherry Lane Branch

Jan. 13 & Feb. 10

3-4:30 p.m.

Community Resources

Idaho Department of Labor

For more information contact
208-364-7781, ext. 4259 or email
MeridianMail@labor.idaho.gov

Cherry Lane Branch

Mondays: 1:30-4 p.m.
Fridays: 10 a.m.-1 p.m.

Small Business Administration

Recommended for ages 18+

unBound Branch

Tuesdays: 9:30 a.m.-12 p.m.

American Red Cross Blood Drives

For details call 1-800-RED-CROSS

Cherry Lane Branch

Feb. 9: 10 a.m.-4 p.m.



Looking for specific resources?

Findhelp.org lists free or reduced-cost Idaho specific resources all in one place.

These include food, housing, transportation, health, money, care, legal, work, education, and goods.

Check out the Meridian History Center!

33 E. Broadway Ave., Meridian, ID 83642

The Meridian History Center is open in Meridian City Hall from 10 a.m.-4 p.m. Monday-Friday for self-guided tours

In 2021 care of the Meridian History Collection transferred from the former Meridian Historical Society to the Meridian Library District. The materials are now part of our collection.

Contact history@mld.org with your research or donation questions.



Digitize Family History

2nd Wednesdays: 1-4 p.m.

Registration Required

Community Resources



SCORE Treasure Valley

Recommended for ages 18+
Are you looking for guidance and advice from successful entrepreneurs and business owners? SCORE Treasure Valley offers just that! Their business mentors are eager to share their knowledge and expertise with you.

Find out more about SCORE at <https://www.score.org/treasurevalley>

unBound Branch

Wednesdays: 9 a.m.-12 p.m.

Coming Home: Women's Reentry Networking Lunch

For ages 18+

This program brings together organizations, agencies, and individuals who mentor and serve women returning to the community from incarceration.

More information at mld.org/events.

Cherry Lane Branch

3rd Tuesdays: 12-1:30 p.m.

VITA Tax Preparation

Recommended for ages 18+

Orchard Park Branch

Mondays 1-5 p.m.

Tuesdays 12-5 p.m.

Visit the Bookmobile

3:30-5 p.m.



Mondays

Meridian Park Apartments

Address: 40 W. Autumn Park Ln
Meridian, ID 83642

Tuesdays

Foot Hills Apartments

Address: 2308 E. Franklin Rd
Meridian, ID 83642

Fridays

Cortland South Meridian Apartments

Address: 1871 S. Spanish Fork Way
Meridian, ID 83642

Spotlighted Databases

Free databases available now! Learn more at mld.org/resources.

December is National Write a Business Plan Month

Thinking about starting a business? Start by building a plan!



Grow, plan, and optimize! **Gale Business: Plan Builder** is for new entrepreneurs, experienced business owners, and nonprofits. Utilize development tools for a step-by-step process to create your business plan, get resources for long-term success, and learn the elements necessary to grow your organization.



Discover the most extensive free forms site available to library patrons with **Gale LegalForms**. Thousands of legal forms are available, with more forms being added daily. Official, State Specific, Federal, Business, Personal, Real Estate and General forms covering hundreds of legal subjects and issues.



Analyze your market. Research competition. Target customers. **DemographicsNow** connects users with a wealth of highly detailed demographic data on more than 24 million U.S. businesses and 206 million consumers—making it ideal for gaining consumer and market insight. Quickly produce a variety of both standard and custom reports to help make informed business decisions.



Do you want to improve your work-related skills or further develop a personal interest? Continue your lifelong learning journey with **Udemy**. Users can search thousands of continuously updated, on-demand video courses across 75 categories in business, technology, design, and more, including courses taught by native speakers in 12 languages.

Friends News and Events

Book Sales

Nov. 30 (Members Only)

Dec. 1 & 2

Cherry Lane Branch

10 a.m.-5 p.m.

Jan. 13

Cherry Lane Branch

10 a.m.-3 p.m.

Feb. 10

Cherry Lane Branch

10 a.m.-3 p.m.

Prices

Hardcover Books – \$2

Paperback Books – \$1

Children's Books – \$1

Mass Market Paperbacks \$.50

Mass Market Romance \$.25

Book Sets – priced as marked

DVDs – \$2 each

Music CDs – \$1 each

Contact FriendsoftheMLD@gmail.com to learn more.



Members of the Friends volunteer to promote events, process and sort books for sales, staff book sales, and help with other activities as needed.

Active members meet regularly to offer valuable input regarding fundraising goals and ways to help meet the library's needs. You may choose to participate as little or as much as you would like – the library is always in need of volunteers and monetary donations.

Membership dues are \$20 annually. All dues are used to donate materials or services to the library. We encourage larger donations to help fund our efforts and sponsor library functions.

Benefits of being a Friend:

- Enjoy pre-sale, members-only access to the Friends multi-day book sales.
- Select two free books at any Friends book sale.
- Build relationships and support our library's role in our community!

Meridian Library District Locations:

Cherry Lane Branch

1326 W. Cherry Lane
Meridian, ID 83642

Hours:

Sunday: 1 to 5 p.m.
Monday-Thursday: 9 a.m. to 8 p.m.
Friday: 9 a.m. to 6 p.m.
Saturday: 10 a.m. to 5 p.m.

Orchard Park Branch

1268 W. Orchard Park Drive
Meridian, ID 83646

Hours:

Sunday: 1 to 5 p.m.
Monday-Thursday: 9 a.m. to 8 p.m.
Friday: 9 a.m. to 6 p.m.
Saturday: 10 a.m. to 5 p.m.

Silverstone Branch

3531 E. Overland Road
Meridian, ID 83642

Hours:

Sunday: 1 to 5 p.m.
Monday-Thursday: 9 a.m. to 8 p.m.
Friday: 9 a.m. to 6 p.m.
Saturday: 10 a.m. to 5 p.m.

Tiny Library

5159 S. Hillsdale Ave.
Meridian, ID 83642

Hours:

Sunday: Closed
Monday-Thursday: 10 a.m. to 2 p.m.
Friday: 10 a.m. to 2 p.m.
Saturday: 10 a.m. to 2 p.m.

unBound Branch

722 E. 2nd St.
Meridian, ID 83642

Hours:

Sunday: Closed
Monday-Thursday: 9 a.m. to 8 p.m.
Friday: 9 a.m. to 6 p.m.
Saturday: 10 a.m. to 5 p.m.

Meridian History Center

Meridian City Hall
33 E. Broadway Ave.
Meridian, ID 83642

Hours:

Monday-Friday: 10 a.m. to 4 p.m.
Saturday & Sunday: Closed
mld.org/resources/history

View annual closures at MLD.org/closures

What You Can Get With Your Library Card:

Item	Time	Limit	Renewals
Audiobooks	28 days	20 items	4
Books	28 days	100 items	4
New Books	14 days	50 items	4
DVD/Blu-Ray	14 days	20 items	2
Video Games	14 days	5 items	2
Kits	14 days	10 items	varies
Mobile Hotspots	28 days	2 items	0
Puzzles/Board Games	14 days	10 items	1

Use Your Library Card at These Locations Too!

- Ada Community Libraries
- Boise Public Libraries
- Garden City Public Library
- Kuna Public Library
- Caldwell Public Library
- Eagle Public Library
- Twin Falls Public Library
- Emmett Public Library
- Mountain Home Public Library
- Nampa Public Library



Contact Us:  208-888-4451



mld.org/contact

