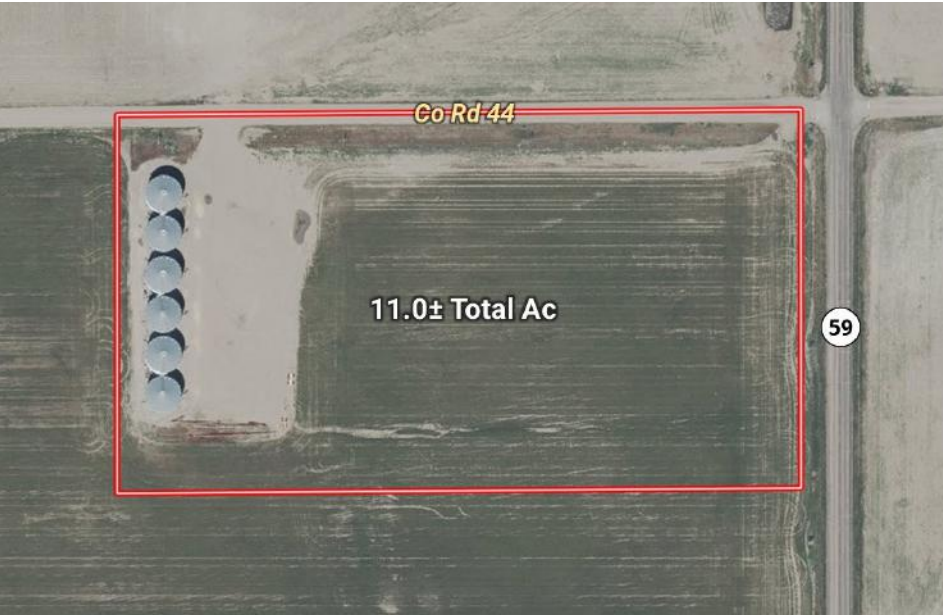


NORTH YUMA-HWY 59 GRAIN FACILITY

11± ACRES | YUMA COUNTY, CO

NEW LISTING



OVERVIEW:

Seller will consider all offers. Take control of your harvest—schedule a showing today and see how this site can streamline your grain handling and boost your bottom line!

QUICK FACTS:

- 11.0± total acres | 420,000± bushels total storage
 - (6) 70,000± bushel bins w/ aeration
 - Built in 2017
 - Stiffened sidewalls
 - 48' diameter w/ 44' (eave)
 - Each bin equipped w/ (4) 27" fans
 - Harvest-Time power sweep unloading systems w/ 10" unloading augers
 - Spiral staircase w/ roof handrails (eave to peak)
- Available for 2025 crops
- LEGAL: Parcel in the NE1/4 Sec 27, T3N-R48W
- R/E Taxes: \$14,856± (2024)

Asking Price \$1,400,000



NOTICE TO PROSPECTIVE BUYERS

The information contained herein has either been provided by the Seller or obtained from reliable sources. We have no reason to doubt its accuracy, but we do not guarantee it. Reck Agri Realty & Auction nor the Seller assumes responsibility for any omissions, corrections, or withdrawals. Maps are not intended as a survey and are for illustrative purposes only. Legal description(s) is(are) subject to existing fence/field boundaries or land use trades, if any; no warranty is expressed or implied as to exact acreages of each parcel. Prospective buyers should verify all information contained herein, and are urged to fully inspect the property, its condition, and to rely on their own conclusions. All equipment and improvements, if applicable, are to be sold AS IS-WHERE IS, without warranty, representation, or recourse to Seller.

Office: 970.522.7770 | Toll Free: 800.748.2589 | reckagri.com



For More Information, Contact:

Ben Gardiner, Broker Associate
bgardiner@reckagri.com

Marc Reck, Broker
marcreck@reckagri.com

The proof is in the numbers.

We connect buyers and sellers of ag real estate like no one else can - and we have the reputation and relationships to prove it.

939,906

total acres sold

439

successful auctions

18,911

auction attendees

2,059

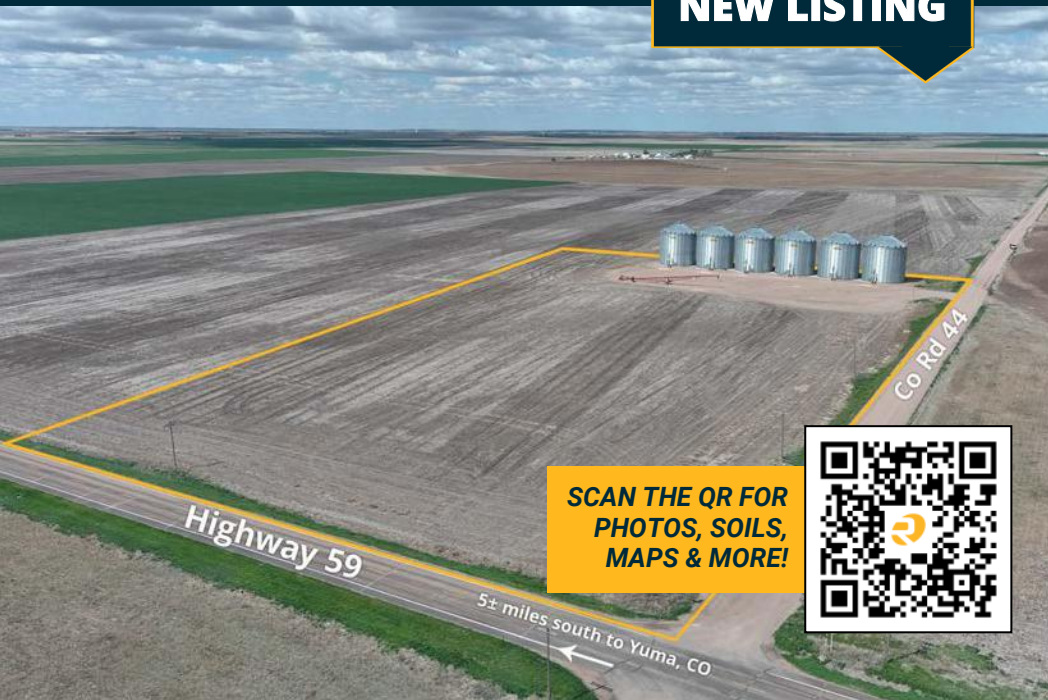
transactions



North Yuma-Hwy 59 Grain Facility

11± Total Acres | Asking \$1,400,000

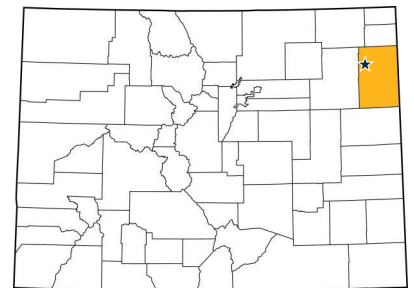
NEW LISTING



SCAN THE QR FOR
PHOTOS, SOILS,
MAPS & MORE!



YUMA COUNTY, CO



420,000± bushel grain storage facility located 5± miles north of Yuma, CO just off of Highway 59. High-capacity grain storage opportunity in Colorado's top-producing ag region!

