

Rosehill

Rosebuds IN BLOOM

ADMISSIONS FOR
SY 2023 - 2024



THE DISCOVERY

HOW CAN YOUR DAUGHTER
BLOOM IN ROSEHILL?

PAREFROSEHILL.EDU.PH



PAREF
Rosehill





01

Welcome to Rosehill

Ms. Marcelo, RSH Executive Director invites you to discover Rosehill

03

Our Educational Philosophy

How can Rosehill's philosophy help your daughter bloom?

05

Blooming through Formation

A cornerstone of the Rosehill education is personal integral education anchored on formation, mentoring, and home-school collaboration.

29

Get started on your journey with Rosehill

Discover the easy steps to making that first step towards blooming in Rosehill's nurturing environment.



**Scan and Bloom in
Rosehill Today!**

HOW CAN ROSEHILL HELP YOUR CHILD BLOOM?

SY 2023-2024

A Message from PAREF Rosehill Executive Director: Ms. Ma. Theresa Marcelo



Ma. Theresa Marcelo

Welcome to PAREF Rosehill School for Girls! As you browse through our admissions primer for School Year 2023-2024, we hope you will get a feel of the heart and soul of Rosehill.

For over 30 years, our Rosehill community has dedicated itself to nurturing Rosebuds who want to grow and flourish in service of our Lord and our countrymen. We've successfully accomplished this through our laser focus on personal integral education, manifested through our strong home-school collaboration, mentoring, personal formation, academic excellence, and character formation.

Today, we invite you and your family to discover how we can help your daughter bloom in Rosehill. Allow us to share with you snippets of our values, experience, and community so you can get a feel of how we help mold women of character who lead and serve. I look forward to seeing you in Rosehill very soon!

Ma. Theresa Marcelo

What is the

PAREF ADVANTAGE

PAREF Rosehill School for Girls is a proud member of the PAREF network of schools.

PAREF, which stands for Parents for Education Foundation, Inc, is community of schools committed to support parents, who are the primary educators of their children, by providing personal integral education in pursuit of academic excellence and a life of virtue.

Since 1976, PAREF has been committed to educating men and women of character who strive to live according to the Christian ideal, do their work extraordinarily well, and positively impact their families, the nation, and the world.

Currently with 16 schools located all over the Philippines, PAREF caters to students from preschool to Senior High School, through its regular and homeschooling programs.

OUR EDUCATIONAL PHILOSOPHY

BLOOMING THROUGH
PERSONAL INTEGRAL EDUCATION

PAREF Rosehill School believes in providing integral education to the students, which addresses their physical, social, intellectual and spiritual needs. Moreover, it is in a safe and secure learning environment where students discover their identity, hone their talents and develop friendships. It is where they forge their character that started in the home so that they are ready to take on responsibilities to lead and to serve in the community and leave a positive impact on society.

The educational philosophy of PAREF Rosehill School is inspired by the teachings of St. Josemaría Escrivá, who believed that the parents are the primary educators of their children.

It is in the family where children primarily learn good habits and develop character traits that mold them into responsible individuals.

Thus, the school collaborates with the parents in helping the students in their pursuit of academic excellence and character formation. It is when parents and teachers become partners in the students' development that education can truly become integral and dynamic.





**How can
Rosehill help
your
daughter
bloom?**

BLOOMING THROUGH FORMATION





Summer Escapades



BLOOMING THROUGH PERSONAL FORMATION

The spiritual development of PAREF Rosehill students forms an essential part of its philosophy of integral education. The School highlights the primary role of parents in their children's spiritual development.

Students, regardless of their specific religious beliefs, are encouraged to grow deeper in their relationship with God and improve their spiritual life with a true spirit of freedom. This enriches them as persons and helps them become good members of society.

The Religion program being offered in PAREF Rosehill gives students the chance to obtain a deep understanding of the Catholic faith and its practice in one's studies, work, daily life, and family and social relations.

The Chaplain of the School is a priest of Opus Dei, a Personal Prelature of the Catholic Church. Mass is celebrated on Wednesdays at Mary the Queen Chapel in Rosehill. Students, teachers and staff also have the opportunity to go to the Sacrament of Reconciliation by appointment.



MENTORING

The Hallmark of a PAREF Education

The mentoring system is the main channel through which home-school collaboration is facilitated. Students are followed up individually by a school staff member called a Mentor. Through periodic conversations with the child and her parents, the Mentor helps the student assimilate the intellectual and moral formation imparted by the school, and thus helps the student develop into a mature and responsible individual.

The Mentor in effect is an older friend in whom the student confides, and with whom she relates in complete and responsible freedom.

Our mentors do their best to form young minds and hearts. Conscious of their pivotal role in promoting home-school collaboration, they first seek to acquire the Christian ideals they wish to instill in their students. They also value and pursue continuous professional development as mentors.

Mentoring

With dedication and patience, they strive to acquire a deep and thorough knowledge of their mentees, so as to form each mentee in the proper values. Through their amiability, warmth, and understanding, they gain the confidence of their mentees and the parents. They are effective contributors to family solidarity.





Parent Formation

The most important involvement of parents in PAREF Rosehill stems from their sharing of goals and principles of education upon which the school operates. There must be unity in what is asked from the students. Both the school and home must support each other.

The school encourages parents to avail of its extensive program of education provided for them. The program specifically aids them to reflect on how important character education is in forming the child; and that it is always possible for parents to improve in this area.

PAREF Rosehill provides Parent Formation programs available in various means. Parents are encouraged to participate in the activities for parents and families, like the parenting courses, seminars and get-togethers, and even spiritual activities to help carry out their responsibilities effectively.

As such, the school provides resources to help parents further understand the principles of good parenting by continually strengthening and motivating them to put these principles into practice.

Parents can also participate in concrete tasks in support of the school. Students are always happy to see their parents help the school community because it expresses unity and support in a very real way.



BLOOMING IN ROSEHILL



The Lat family shares their PAREF Rosehill experience with us.



Formation in PAREF Rosehill:

Sports and Formation

In PAREF Rosehill, even sports play a part in the community's formation.



"Sports is a very rich source of values and virtues that help us to become better people."

-Pope Francis,
"Giving the Best of Yourself"

In the PAREF system, the sports programs are used to strengthen, encompass, and and be a fundamental driver of character and values formation for students, parents, club moderators, and coaches in all PAREF schools.

The PAREF Rosehill sports programs are co-developed by Club Moderators with the PE Department, Personal Formation Officers, and Parents.

Programs are holistic, inclusive, age and development appropriate.





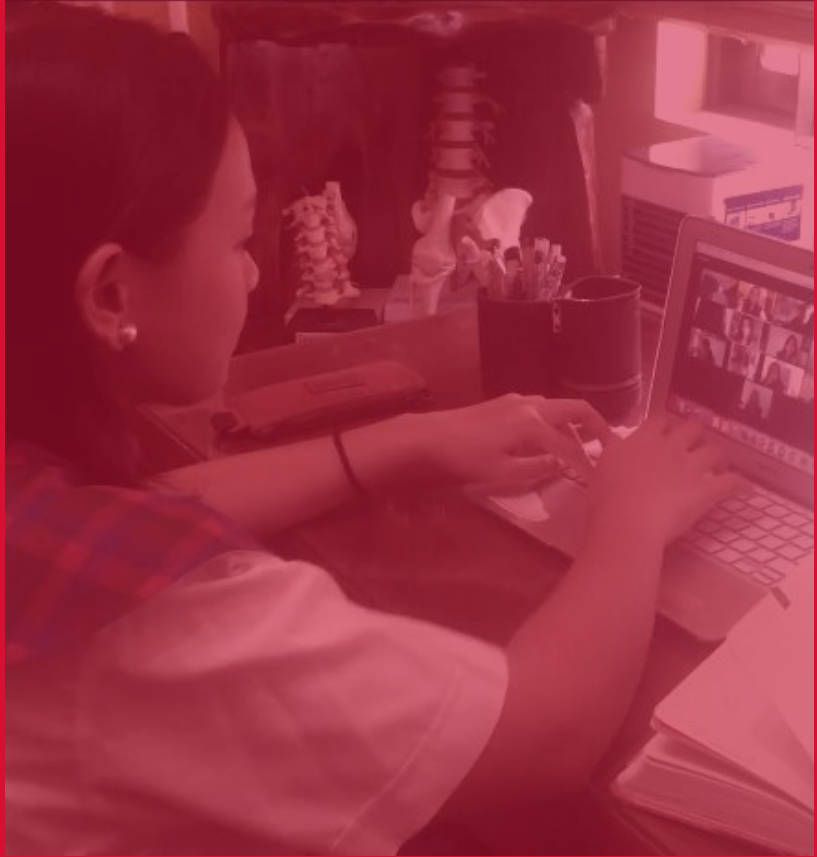
“

**PAREF Rosehill School
aims to help the
student in her pursuit
of academic excellence
and character
formation through
integral and
transformative
education.**

BLOOMING THROUGH ACADEMICS



CURRICULUM



OUR CURRICULUM

We use the following curricula in PAREF Rosehill:

- **K to 12 Curriculum**
- **Most Essential Learning Competencies (MELCs)**
- **One PAREF Curriculum**



ACADEMICS

Integrative Education with Tried-and-Tested Methods

The school follows the time-tested as well as integrative methods of instruction.

Through this approach, academic learning is connected to real life situations; thus, students use their learning and apply it to their own daily lives. In addition, the cognitive, behavioral and affective dimensions in teaching are considered; values are integrated in instruction across all subject areas.

Rosehill believes that the work of education should address the integral formation of the student to make her realize her potential as a citizen and a daughter of God.

A Rosehill student must recognize the importance of working and studying hard in the development of character and human personality. She should regard academic studies as a good training ground for living in society. In the same manner, she needs to understand the importance of intellectual formation in carrying out her mission in the world.

The student thus contributes to the development of society through work and the responsible use of her freedom. To achieve this, the school implements appropriate academic and non-academic guidelines

Academic Excellence

The Academic curriculum is challenging, engaging, and life relevant. It is designed using student-centered learning as a foundational framework with the objectives to (1) lead students in the pursuit of the highest levels of academic excellence; (2) guide them in making connections across disciplines; and (3) help them acquire a Christian worldview.

Students ultimately develop analytical and critical thinking skills as they learn. These broaden their perspective and improve the way they reflect and act on real life circumstances. These skills help them to lead meaningful lives committed to finding the truth and to use freedom with responsibility to promote a better world.

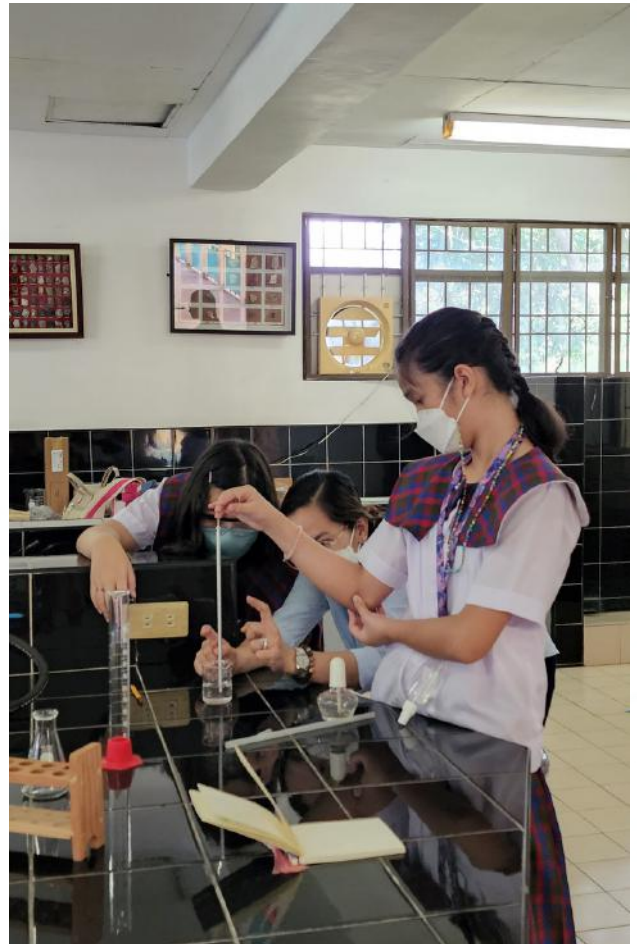
English

The English Program aims to develop lifelong readers and confident writers who possess good reading habits that allow them to understand and appreciate a wide range of texts, including the literature of other cultures. Students who go through the program are developed to communicate effectively – both in speech and writing – and to acquire a positive attitude towards ideas and values relevant in the formation of character and in dealing with people from different walks of life.



Science

The Science curriculum is geared towards developing students' proficiency in experimental and analytical methods used in the Sciences, and which help them gain an understanding and appreciation of nature. Learning Science involves the knowledge and understanding of scientific concepts and the processes required for personal decision making, participation in civic and cultural affairs, and economic productivity. The students' critical thinking and problem solving skills are cultivated with the help of investigative and research projects.



History

The Social Studies and History curricula promote the application of historical thinking in daily life to enable students to effectively participate in all societal processes based on informed judgement, a deep sense of pride in the Filipino race, and global consciousness.

Filipino

The Filipino program cultivates the knowledge, skills, and awareness of critical decisions in the appreciation of Philippine Literature. The program develops the macro skills of reading, listening, speaking, and writing necessary for effective communication in the Filipino language. It ingrains love and appreciation for Filipino as an instrument for greater engagement.



Religion

The Religion and Theology programs act as a link between the students' faith and life; their way of living. They are given the theological foundation for ethical behaviour; that is, to act and make choices in accordance with their human dignity. The program also focuses on the purpose of Christian life and the means to live a personal relationship with God and consequently, love for others, in one's daily occupations. Through its Service Learning component, students learn to help others and to make a difference in the world around them.

Home Economics

The Home Economics curriculum aims to develop self-confidence, self-awareness, love and respect for work, and effective use of personal and family resources in order to improve aspects of life such as food and nutrition, clothing, housekeeping, and etiquette that impact individuals, families, and communities. It equips the students with life skills necessary to create and manage a nurturing home and family life for a stronger society.



Music and Arts

In the Arts, students gain knowledge of artistic techniques and technologies in Dance, Drama, Music, Visual Arts, and combinations of Art forms. Through exposure to content and practice, they develop aesthetic and creative skills, as well as a critical appreciation of the varied forms of Art. The Arts develop the students' sense of personal and cultural identity that equips them for lifelong involvement in the appreciation of the Arts.

Health and Physical Education

Health and Physical education develops an understanding of health issues and the skills needed for confident participation in sports

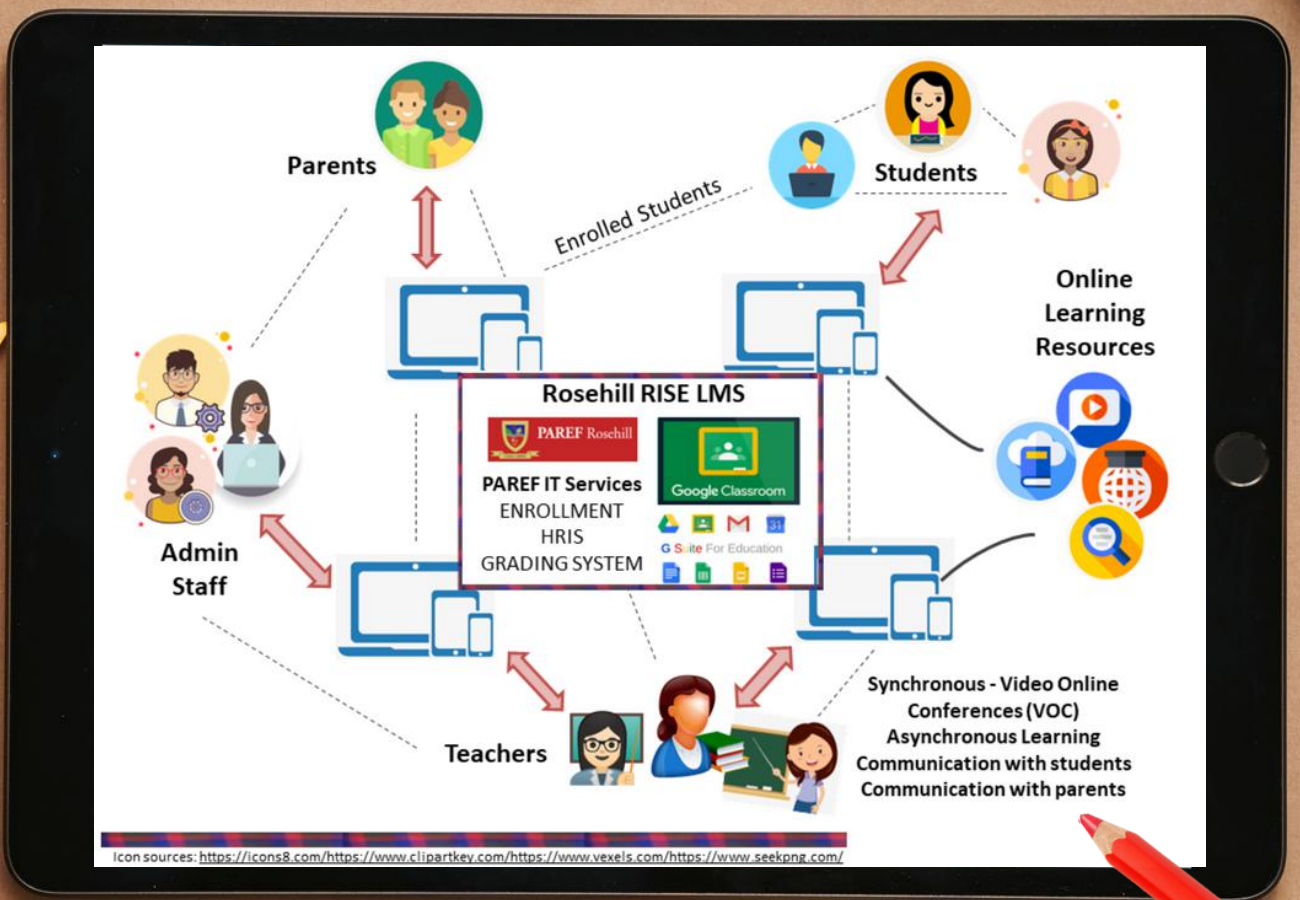
and recreational activities. It enables students to make responsible decisions about health and physical activity, as well as to promote their own and others' health and well-being. It also confers safety awareness by understanding the accident chain and the prevention of accidental injuries due to hazards, and by understanding disaster management in practice.



BLOOMING IN ROSEHILL

Rosebud Malix shares her Rosehill experience with us.

Bloom through our Learning Management System (LMS)



R.I.S.E. BLENDED PLUS

Learning is R.I.S.E.



Learning is R: Reimagined

Learning is reimagined with the latest modalities, technologies, and methodologies.



Learning is I: Innovative

The teachers innovate to achieve 21st century learning.



Learning is S: Student-Centered

Education is student-centered, safe, and family-focused.



Learning is E: Enhanced

Learning experience is enhanced by the virtual blended learning model.



Face-to-Face
Learning

Blended
Learning



Online
Learning

To suit the realities of the current environments and taking into account the well-being and needs of our students, PAREF Rosehill implements face to face sessions complemented, if needed, by online learning modalities. For school year 2023, we are implementing full face-to-face classes.

LEARNING AREAS FOR GRADE SCHOOL



GRADES 1 - 3

- Language
- Reading
- Mathematics
- Science
- Filipino
- Social Studies
- Religion
- Physical Education
- Art
- Music

GRADES 4 - 6

- Language
- Reading
- Mathematics
- Science
- Filipino
- Social Studies
- Religion
- Physical Education
- Art
- Music
- Home Economics



**Learning in
Rosehill is fun!**

BEYOND THE CLASSROOM

BLOOMING THROUGH
CO-CURRICULARS, CLUBS, AND
EXTRACURRICULAR ACTIVITIES

Beyond the traditional classroom setting, students are given many learning opportunities to discover and hone their talents and interests, grow in leadership skills, develop deep and lasting friendships, serve the community, and practice virtues that strengthen their character.

- Clubs & Orgs
- Athletics
- Student Government
- Community Service
- Intrams & Family Day

Clubs and Organizations

Apart from developing the intellectual capabilities of our students, Rosehill also provides opportunities for the development of their talents, interests, social skills, and environmental and social awareness; and grow in values like love for culture, reading, and the home, through different club activities.

PRIMARY CLUBS

- Little Bakers Club
- Computer Club
- Little Chefs Club
- Dancing Rosies
- Happy Art Club

INTERMEDIATE CLUBS

- Creative Hearts Club
- Computer Club
- OPM Club
- Junior Explorer's Club
- Bullet Journal Senpais

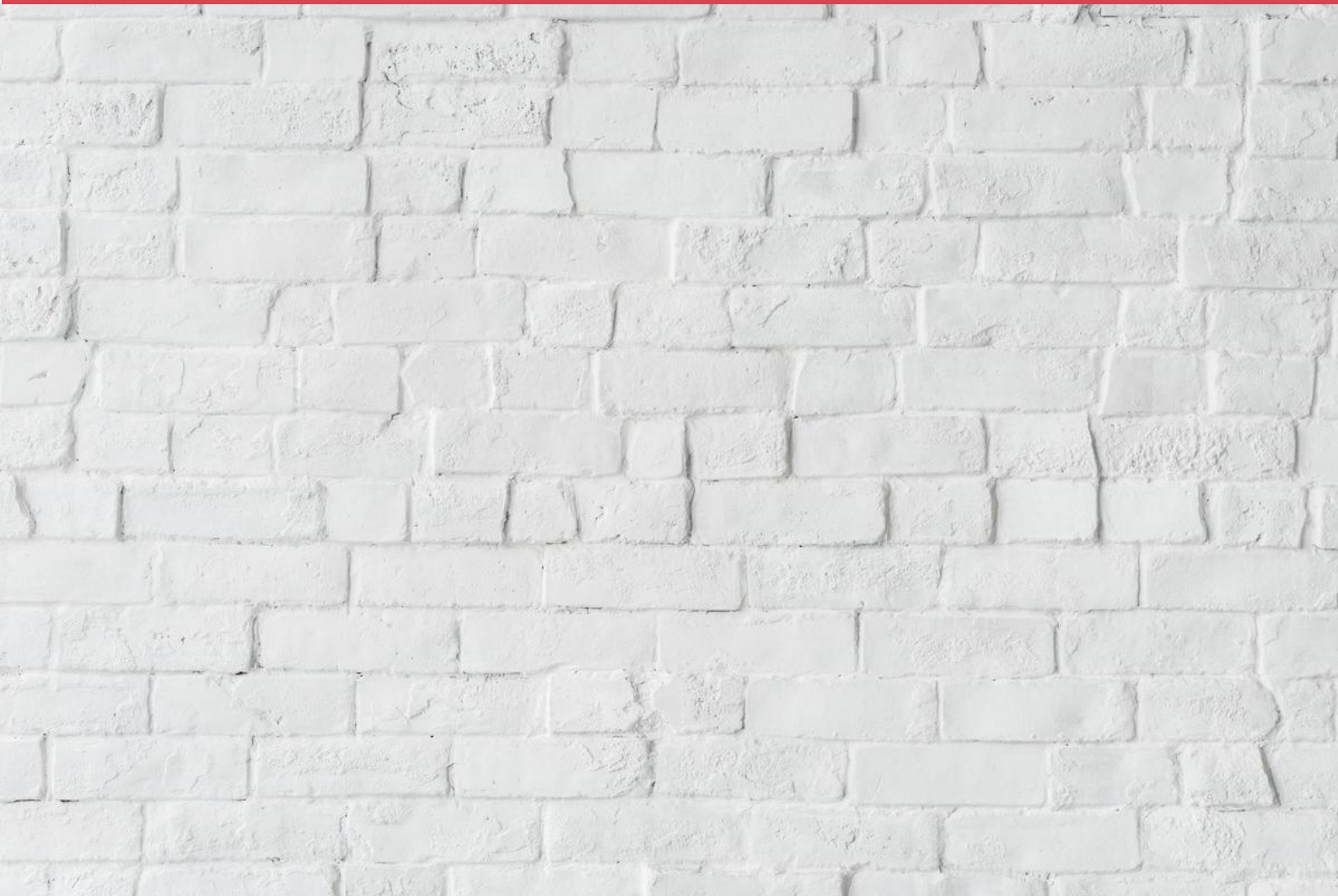


HIGH SCHOOL CLUBS

- Montage
- Montage: Broadcasting
- Art Club
- Book Club
- Dance Club
- Baking Club
- Debate Club
- Foreign Cultures Club
- Fitness Club
- Movie Review Club



BLOOMING IN ROSEHILL



After School Clubs

- Violin
- Piano
- Guitar
- Computer Coding
- Ispeak Public Speaking
- Nihongo
- Survival Skills Workshop



Sports Clubs

- Gymnastics
- Taekwondo
- Football
- Baseball
- Volleyball
- Alma Danza Dance Club





BLOOMING IN ROSEHILL



Rosebud Adriana, a Grade 1 student, shares what makes Rosehill fun!

ADMISSIONS PROCESS

HOW CAN YOUR DAUGHTER GET
STARTED ON BLOOMING IN ROSEHILL?

Applying to Rosehill is very easy. You can schedule your school tour, trial class, and our Rosehill OS+ (Open School on Demand) by clicking on bit.ly/BloomInRosehill.

You may also submit your application forms and other requirements through the easy steps outlined below:

Step 1: Prepare Admission Requirements.

- *Parents' Information Sheet
- *Student's Information Sheet
- *Recommendation Form
- *Parents' Undertaking (Grades 1-3, Grades 4-12)
- Student's Recent Report Card (F138)
 - For foreign students – Report Card w/ English translation and Special Study Permit (SSP)
- Home schooling records (if applicable)
- Student's PSA/NSO Birth Certificate
- Student's Baptismal Certificate
- Parents' Marriage Certificate
- Student's Recent 1x1 ID Picture

*Click to download said forms.

Step 2: Submit Application

Upload the scanned or digital copies of the requirements to bit.ly/parefrshonlineapp.

Kindly submit physical copies onsite to the Admissions Office upon enrollment.

Step 3: Assessment and Interview

- Student's Assessment
- Student's Interview (For High School Applicants)
- Parents' Interview

Step 4: Let's keep in touch!

Kindly wait for the advise from the Admissions Office regarding the assessment results and other reminders.



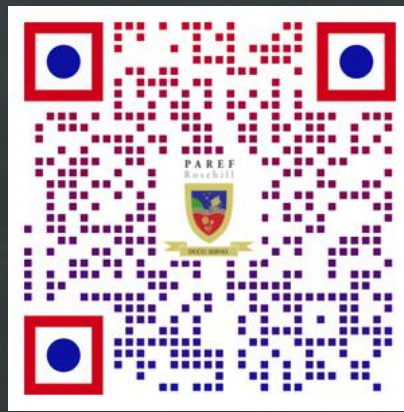
[Please click here to
download the required
forms.](#)



GET STARTED

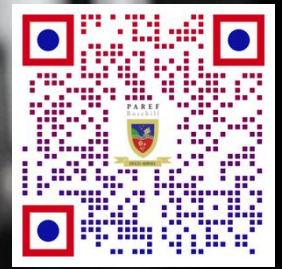
ON YOUR ROSEHILL JOURNEY

BLOOM WITH US TODAY!



bit.ly/BloomInRosehill





CONNECT WITH US!

Like



Follow



Subscribe



Follow



www.parefroshill.edu.ph



8697-1686
8697-6412
8696-4487



admissions@parefroshill.edu.ph

ROSEHILL R.I.S.E.

PAREF
Rosehill



DUCO. SERVIO.



www.parefrosehilledu.ph

