

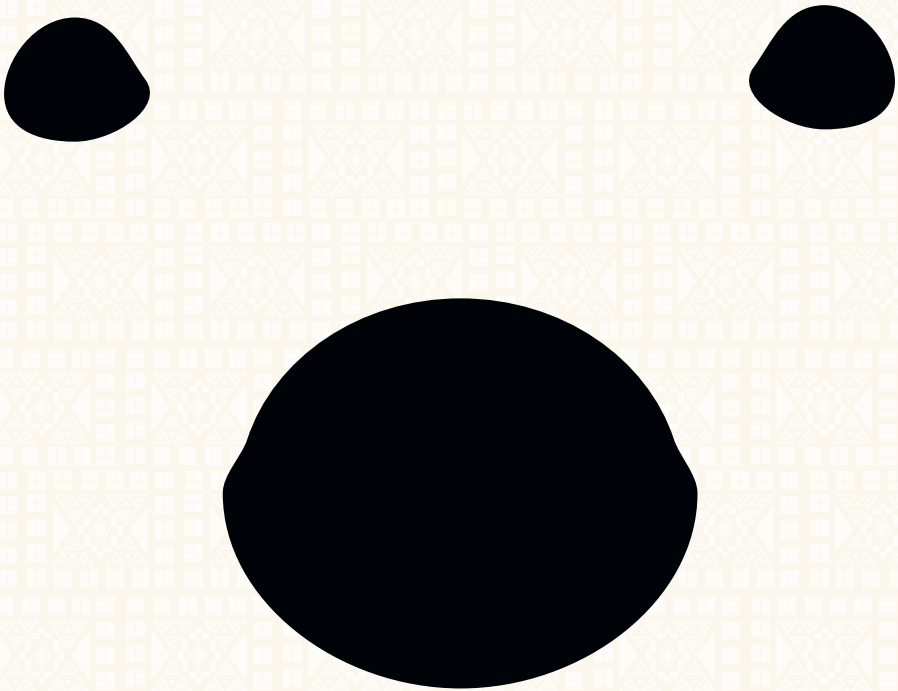


ARKANSAS  
ALUMNI

RAZORBACKS ON TOUR

NOVEMBER 2-7, 2025

# POLAR BEARS OF CHURCHILL



Orbridge

A 6-Day Expedition to the Polar Bear Capital of the World

# Polar Bears of Churchill | Itinerary and Highlights (subject to change)

You are embarking on an adventure where daily activities will be determined by weather, opportunities to view wildlife, and other various elements that make up the diverse landscape. This itinerary is a general listing of activities and excursions that may happen during any part of the tour.

**Day 1: ARRIVE IN WINNIPEG, MANITOBA, CANADA** Upon arrival to Winnipeg Richardson International Airport an Orbridge representative will assist with your transfer to the hotel. This evening gather for a special reception in Assiniboine Park Zoo's underwater viewing tunnels. Adjourn to the Aurora Borealis Theatre for a three-course dinner with wine served during a Northern Lights display. After dinner enjoy a presentation on the magnificent polar bears.  
Overnight: Fort Garry Hotel & Spa (R,D)

**Day 2: WINNIPEG | FLIGHT TO CHURCHILL | CULTURAL AND HERITAGE TOUR** Check out of the hotel this morning followed by the group flight to Churchill. Transfer to Lazy Bear Lodge in time for lunch at the café. Afterward set off on a guided Cultural and Heritage Tour to visit the town's waterfront, Miss Piggy Plane Crash, Polar Bear "Jail" and Cape Merry. Return to the lodge to check in, unpack and familiarize yourself with the property.  
Overnight: Lazy Bear Lodge (B,L,D)

**Day 3: CHURCHILL | ARCTIC CRAWLER™ EXPERIENCE | ITSANITAQ MUSEUM** This morning head out into the stark and beautiful landscape aboard Lazy Bear's Arctic Crawler™ for a guided wildlife excursion. Your expert naturalist will provide insight on the Arctic tundra's wildlife, vegetation and ecosystem. Have your camera ready as photography opportunities are plentiful. After lunch visit the well-known local Itsanitaq Museum to learn more about the indigenous population and its rich history and culture.  
Overnight: Lazy Bear Lodge (B,L,D)



**Day 4: CHURCHILL | ARCTIC CRAWLER™ EXPERIENCE | DOG SLEDDING** Today enjoy a second opportunity from the comfort of the Arctic Crawler™ to observe and photograph polar bears. Later meet an energetic team of sled dogs and their experienced handler. Learn about these industrious canines then bundle up for your own exciting dog sled experience.  
Overnight: Lazy Bear Lodge (B,L,D)

**Day 5: CHURCHILL | NORTHERN STUDIES CENTRE | FLIGHT TO WINNIPEG** Visit the Churchill Northern Studies Centre to gain insight into the unique arctic ecosystem and the environmental research in progress. Enjoy lunch at the Centre then transfer to the airport for the charter flight to Winnipeg. This evening gather with fellow travel companions for a farewell reception.  
Overnight: The Grand Winnipeg Airport Hotel (B,L,R)

**Day 6: WINNIPEG | DEPART FOR U.S.** After breakfast make the short walk from the hotel to the airport for flights home. (B)

(B = Breakfast, L = Lunch, D = Dinner, R = Reception)





## THE ARCTIC CRAWLER™

Get up-close access to the wildlife of the tundra aboard this specially designed trekking vehicle. The Arctic Crawler™ features comfortable seating, on-board facilities with flush toilet, large windows that lower for better viewing and a spacious, fully grated outside rear deck for optimal photography opportunities. With the expertise of the driver and your Orbridge Expedition Leader, you will witness all the stunning natural beauty and diverse wildlife the tundra has to offer.



## What's Included

- 5 nights in ideally situated and comfortable accommodations
- Round-trip airfare between Winnipeg and Churchill
- 5 breakfasts, 4 lunches (2 are picnic-style) and 4 dinners including a special private welcome reception and three-course dinner at Assiniboine Park Zoo
- Full guiding services of an Orbridge Expedition Leader and a local naturalist
- All excursion transportation and entry fees
- All gratuities
- Airport transfers for guests arriving and departing during the suggested times

**Orbridge**

## Your Expedition Leader:

Enriched from the wealth of expertise provided by your

Orbridge Expedition Leader, you'll bring home a deeper understanding of the flora, fauna, natural history and cultural narrative of the diverse Canadian Arctic.

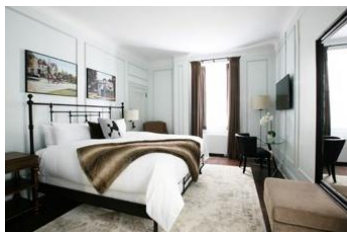


**Activity Level:** Activities are generally not very strenuous and walking is at a fairly slow pace in order to observe and learn as much as possible. Guests on this program are able to walk on uneven surfaces, icy, snow-covered ground, and stairs without assistance.

## Accommodations *(subject to change)*

### FORT GARRY HOTEL & SPA

After an exciting day of exploration, retire to this landmark property in the heart of downtown Winnipeg, featuring high-tech amenities and a modern mix of contemporary style and Old World elegance.

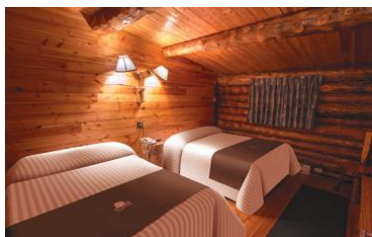


### LAZY BEAR LODGE

This remarkable, handcrafted log lodge will provide cozy comfort during your stay.

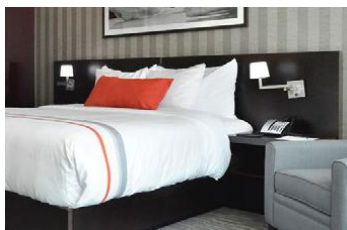
A log house builder by trade, Wally Daudrich built Lazy Bear Lodge himself, literally. Drawn to the area by its sense of freedom, he and a partner dragged logs from the forest by snowmobile, crafting them first into a small café, then a small lodge and finally the two-story, modern lodge of today. Even the wood floors and windows were sustainably sourced. The flooring, made of Douglas fir, was recycled from the Canadian National Railway warehouse built in the early 1920s. The windows were once part of an 1800s Hudson Bay Trading Post.

The friendly staff and scenic surroundings make this property memorable. Get cozy in the comfortable lounge and feast on homemade northern cuisine at the Lazy Bear Café.



### THE GRAND WINNIPEG AIRPORT HOTEL

Located next to the Winnipeg airport terminal, this boutique property provides beautifully appointed accommodations and thoughtful amenities.



# POLAR BEARS OF CHURCHILL

NOVEMBER 2-7, 2025

Standard Rate: <b>\$9,334</b> <small>\$13,334 Single</small>	Special Rate: <b>\$8,830*</b> <small>\$12,830 Single</small>
– includes \$835/person internal airfare –	

Rate is per person based on double occupancy except where noted as Single, in U.S. dollars.

## Reserve by Credit Card:

Online: [uark.orbridge.com](http://uark.orbridge.com)

Phone: (866) 639-0079

Fax: (206) 452-5655

## Reserve by Check:

Made payable to **Orbridge, LLC**

Mail to: Orbridge, P.O. Box 1376

Poulsbo, WA 98370

## GUEST INFORMATION:

Guest #1 Name (Title/Salutation): \_\_\_\_\_

Email: \_\_\_\_\_ Class Year: \_\_\_\_\_

Home Phone: \_\_\_\_\_ Alt. Phone: \_\_\_\_\_

Address: \_\_\_\_\_

City: \_\_\_\_\_ State: \_\_\_\_\_ Zip: \_\_\_\_\_

Guest #2 Name (Title/Salutation): \_\_\_\_\_

Email: \_\_\_\_\_ Class Year: \_\_\_\_\_

Home Phone: \_\_\_\_\_ Alt. Phone: \_\_\_\_\_

## DEPOSIT PAYMENT:

Check     ACH (Automated Clearing House)     MasterCard/Visa     American Express     Discover

Card #: \_\_\_\_\_ Exp. Date: \_\_\_\_\_

Name (as printed on card): \_\_\_\_\_

Billing Address (if different from above): \_\_\_\_\_

City: \_\_\_\_\_ State: \_\_\_\_\_ Zip: \_\_\_\_\_

## DEPOSIT:


# \_\_\_\_\_ guests joining program (\$850/person) = **TOTAL DEPOSIT: \$** \_\_\_\_\_

I/we have read, understand, and agree to the full Terms & Conditions at [terms.orbridge.com](http://terms.orbridge.com); and I/we agree that Orbridge, LLC is authorized to charge my credit card above and/or take my/our deposit for this program.

Signature: \_\_\_\_\_ Date: \_\_\_\_\_

Razorbacks on Tour is a program of the Arkansas Alumni Association. To learn more about our program, visit us on the web at [arkansasalumni.org/travel](http://arkansasalumni.org/travel) or contact Collin Brunner at (800) 775-3465, [travel@arkansasalumni.org](mailto:travel@arkansasalumni.org).

Alumni, members, family & friends—Anyone can travel with Razorbacks on Tour! Thank you to our members who make all of our programs possible.

 Orbridge takes seriously the responsibility to minimize our global environmental impact. Each year we plant 100,000 trees in U.S. State Forests with afforestation needs as an ongoing initiative among our evolving sustainability efforts. Learn more at [orbridge.com/going-green](http://orbridge.com/going-green).

\*Special group rate; limited offer. Airfare not included. \*\*A complement to the educational component of this journey, Expedition Libraries are curated collections of reading and resources tailored to this program. Place your deposit on or before the specified date, and one Expedition Library per household will be sent after receipt of final payment. Libraries may be purchased; call for details.

CUT HERE



## RAZORBACKS ON TOUR

Arkansas Alumni Association  
P.O. Box 1070  
Fayetteville, AR 72702

# POLAR BEARS OF CHURCHILL

NOVEMBER 2-7, 2025

FREE EXPEDITION LIBRARY  
AN EXCLUSIVE EARLY  
RESERVATION BONUS

Reserve by

**March 28, 2025\*\***

Special Alumni Rate:

Save more than **\$1,000** per couple

**30-day refund guarantee**

Alumni and Friends,

We are thrilled to present you with a special opportunity to witness one of the largest confluences of polar bears in the world.

Each fall, about 1,000 polar bears of all ages congregate around this seaport town while they wait for wintertime's sea ice to form over the Hudson Bay. Join us on an unforgettable adventure to be part of this extraordinary annual phenomenon—with the special opportunity to observe, photograph and learn about these magnificent Lords of the North.

This distinguished program features exclusive educational experiences including presentations from Assiniboine Park Zoo and Churchill's Northern Studies Centre.

Please reserve online at [uark.orbridge.com](http://uark.orbridge.com), by calling (866) 639-0079, or by returning the enclosed reservation form.

Your connection starts here.

Dr. Brandy Cox M.A.'07, Ph.D.'23  
Life Member  
Executive Director & Associate Vice Chancellor  
Arkansas Alumni Association

UARK-PBC-25

PSRRT STD  
U.S. POSTAGE  
PAID  
PERMIT NO. 825  
SAN DIEGO, CA