

# 7-DAYS

*Travel for  
travellers*  
BY GLP WORLDWIDE

# **GALÁPAGOS ISLANDS**

## **ICONIC WILDLIFE & SUBLIME SCENERY**

# **WESTERN ROUTE**



# GALÁPAGOS

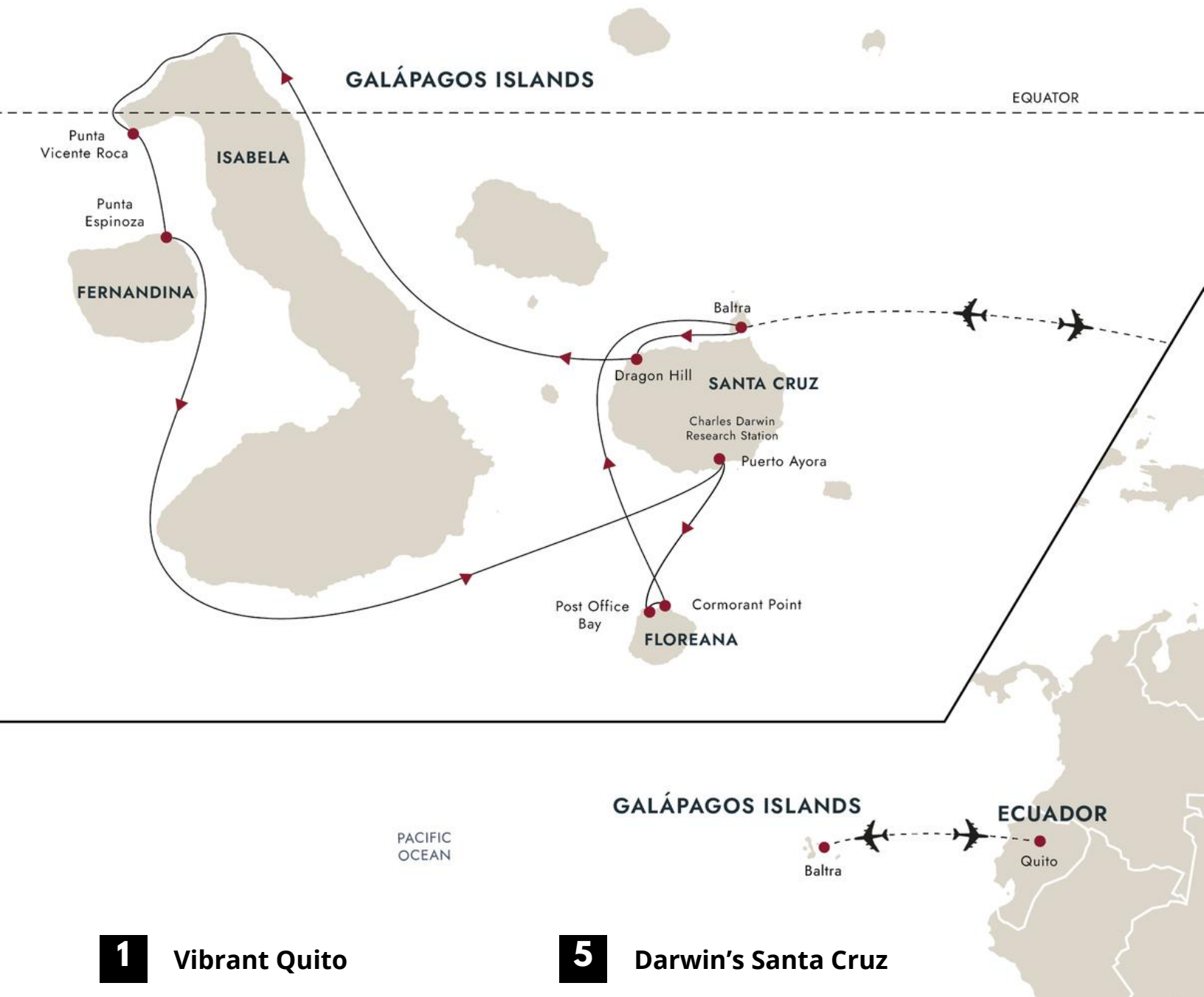
M E E T   T H E   G U E S T S

UP TO  
**40%  
OFF**

LIMITED-TIME SAVINGS

BOOK BY JUN 13

# ITINERARY



**1**

**Vibrant Quito**

**2**

**Visit historic Quito**

**3**

**Your cruise begins**

**4**

**Wildlife-rich Isabela and Fernandina**

**5**

**Darwin's Santa Cruz**

**6**

**Picturesque Floreana**

**7**

**End of an expedition**

*Travel for Travellers*  
BY GLP WORLDWIDE





# DAY 1 Vibrant Quito



Begin your adventure in the vibrant city of Quito

Your journey begins on the Equator in the lush Andean foothills. At 9,350 feet, Quito is the second-highest capital city in the world, and its main draw is the exquisite Old Town, which was founded on an ancient Inca settlement. This UNESCO World Heritage Site is packed with well-preserved colonial architecture, including colorful plazas, magnificent churches, and stately monuments. Settle into your hotel, then head out to explore.

If you have time, we recommend coming a few days earlier and joining one of our optional Pre-Programs.



# DAY 2 Visit historic Quito

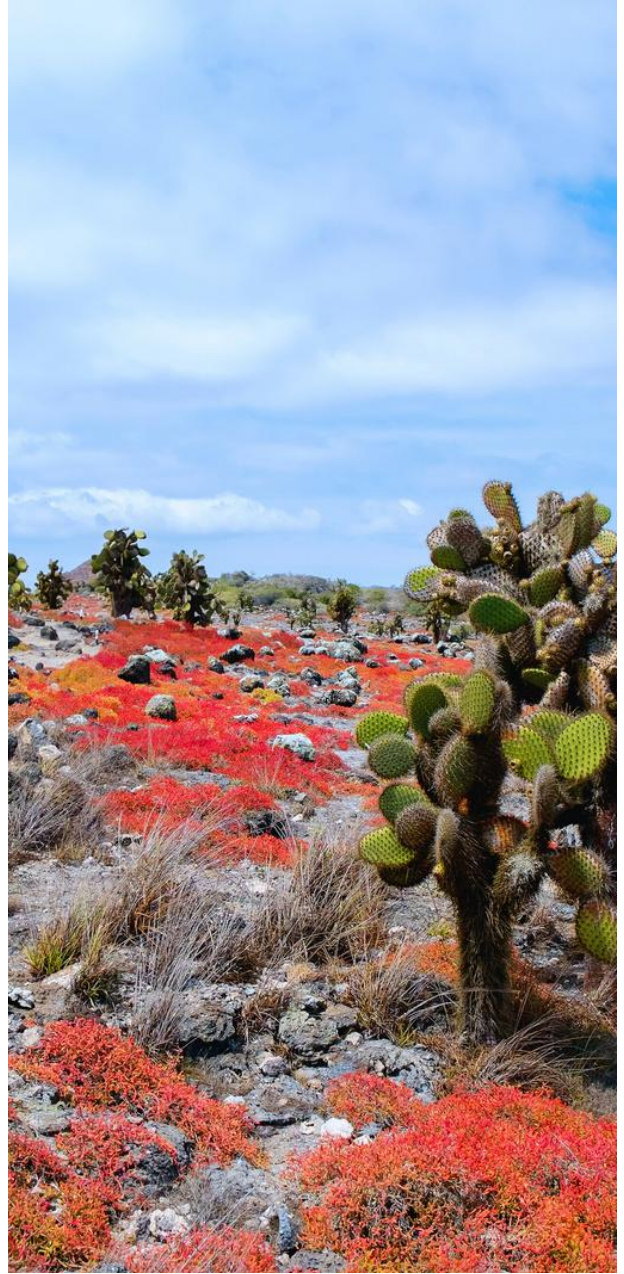
## Straddle the Equator in the Middle of the World City

Today, enjoy a guided tour of Quito's remarkable Old Town, one of the largest and best-preserved colonial-era quarters in South America. Wander through cobblestone streets as you admire the architecture and sample delicious chocolate made from the finest Ecuadorian cacao along the way.

Next, you'll head to the iconic 'Middle of the World City', located around 16 miles north of Quito. After lunch, you'll visit the famous monument that delineates the imaginary line that is the Equator. Have your camera ready to capture the moment you stand with one foot in each hemisphere.







# DAY 3    Your cruise begins

Get ready to explore the spectacular Galápagos Islands

As your South America land adventure draws to a close, it is time to embark on the next stage of your journey. After breakfast, a short flight will take you to Baltra Island, a part of the spectacular Galápagos Archipelago. A transfer will take you straight to the port, where your comfortable expedition ship MS Santa Cruz II awaits you.

We'll begin our exploration of the Galápagos Islands in the afternoon by following the north shore of Santa Cruz to the fascinating landscapes of Cerro Dragón, or Dragon Hill, where we'll land. On the first part of our walk, we'll pass a brackish lagoon that is frequented by shorebirds and American flamingos. Further inland, the trail offers a beautiful view of the bay and the western islands of the archipelago, as well as your first chance to encounter some land iguanas.



# DAY 4

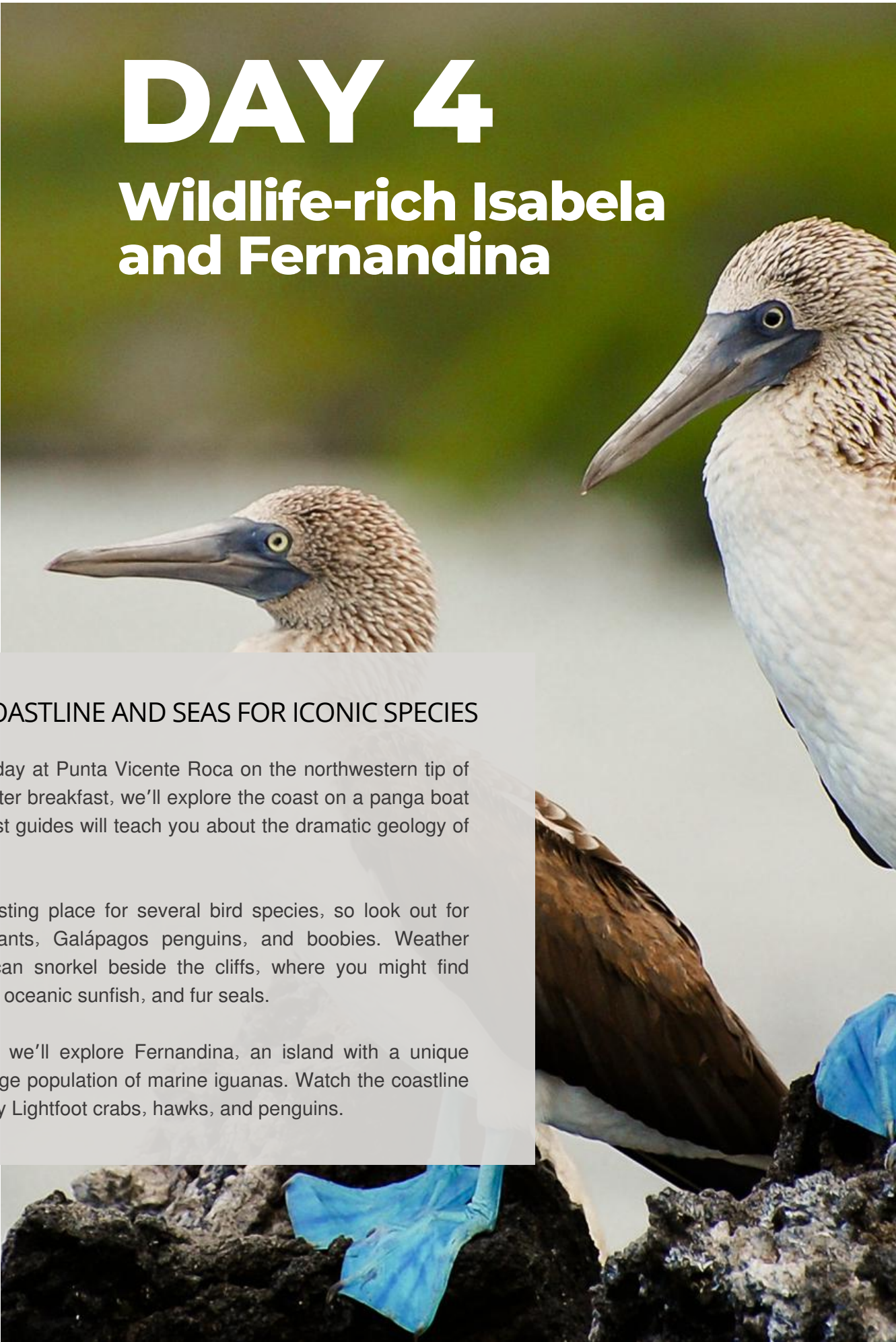
## Wildlife-rich Isabela and Fernandina

### SCAN THE COASTLINE AND SEAS FOR ICONIC SPECIES

You'll start your day at Punta Vicente Roca on the northwestern tip of Isabela Island. After breakfast, we'll explore the coast on a panga boat and your naturalist guides will teach you about the dramatic geology of the area.

This site is a nesting place for several bird species, so look out for flightless cormorants, Galápagos penguins, and boobies. Weather permitting, you can snorkel beside the cliffs, where you might find green sea turtles, oceanic sunfish, and fur seals.

In the afternoon, we'll explore Fernandina, an island with a unique ecology and a large population of marine iguanas. Watch the coastline for sea lions, Sally Lightfoot crabs, hawks, and penguins.





# DAY 5

## Darwin's Santa Cruz

---

Meet the famous  
giant tortoises of  
the Galápagos

Today, you'll explore Santa Cruz Island. In the morning, we'll disembark at Puerto Ayora to visit the Charles Darwin Research Station.

At this giant tortoise breeding center, you can see recently hatched tortoises and Darwin's famous finches – the birds he used as a basis for his theory of evolution by natural selection. There's also an impressive forest of prickly pear cacti that is home to many land birds.

Enjoy a cooler climate over lunch in the lush highlands, where giant tortoises shuffle about munching on grass and wallowing in pools.

You'll also have time for another activity, including mountain biking or visiting a sugar plantation.







# DAY 6

Discover Galápagos history and underwater wildlife

## Picturesque Floreana

After breakfast, enjoy a panga boat ride through the channels on Floreana's north shore before taking in the incredible views of the island from Baroness Cove. Later, we land at Post Office Bay to visit the historic barrel that has served as a post office in the archipelago for over two centuries.

After lunch, explore the wonders around Champion Islet in a panga boat or aboard our glass-bottom boat. This is one of the best snorkeling spots in the archipelago.

From there, we head to Cormorant Point, where we'll walk from an olivine-crystal beach to a brackish lagoon. Along the way, common sights include American flamingos, pintail ducks, and more.







*Travel for  
Travellers*  
BY GLP WORLDWIDE

# DAY 7

## End of an expedition

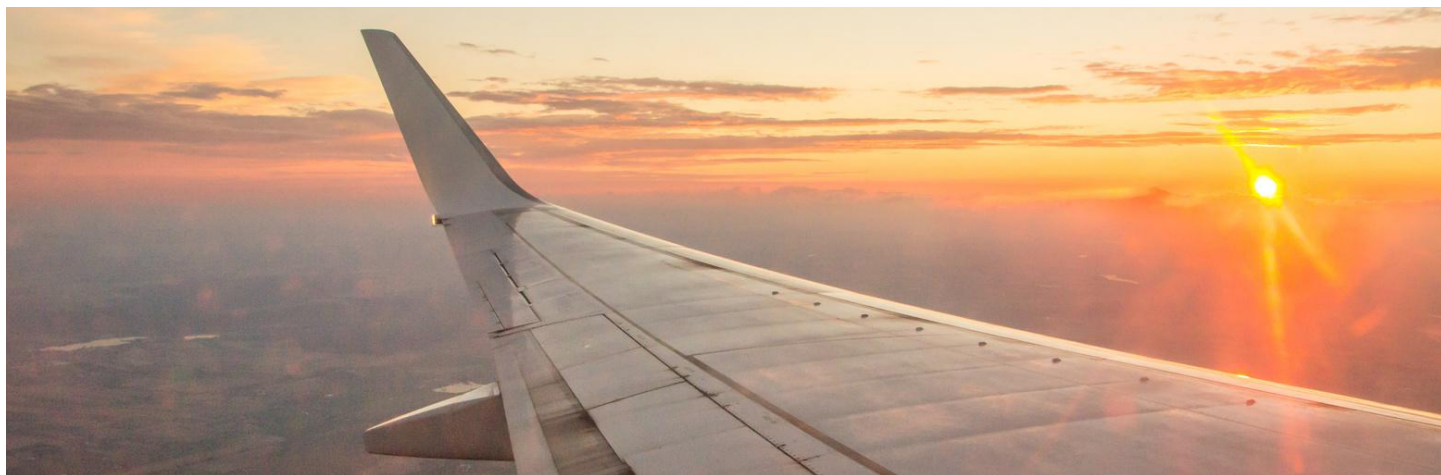


### Your adventure comes to an end

As your expedition cruise comes to a close, it's time to bid farewell to the wildlife and scenery of one of the world's most incredible nature destinations. We'll also say farewell to our wonderful crew and naturalist guides as we disembark at Baltra Island.

A transfer will take you to the airport in Baltra for your flight to Quito to connect to your international flight, or if you prefer, continue to Guayaquil for another adventure.

To explore more of Ecuador, why not extend your stay and join one of our optional Post-Programmes.





# WHAT IS INCLUDED

## FLIGHTS

- Flights in economy class between Quito and Baltra, including all taxes

## HOTEL

- Two nights at a hotel in Quito before the expedition cruise, including breakfast and dinner on Day 2

## TRANSFERS

- Transfers between the airport and the ship in Baltra

## EXCURSION

- Full-day excursion: Historic Quito and Middle of the World, including lunch, before the expedition cruise

## EXTRAS

- Galápagos Islands National Park admission fee
- Transit Control Card for the Galápagos Islands
- Access to the airport lounge at the Quito (or Guayaquil) airport upon return from the Galápagos Islands for guests flying internationally on the day of disembarkation

## EXPEDITION CRUISE

- A stay in a cabin of your choice
- Daily breakfast, lunch and dinner
- House wine and beer served with lunch and dinner. From 1 October 2024 departures, wine, beer and spirits (excluding premium alcoholic drinks) available from the bar at any time (subject to Ecuadorean licensing laws)
- All day coffee, tea and soft drinks
- A complimentary water bottle to refill on board and take home
- A backpack or another piece of HX kit
- Professional photos from your trip taken by our onboard photographer
- Complimentary Wi-Fi. Please note, streaming is not supported
- Use of hot tubs, fitness room, lounges and more
- Gratuities included. Fantastic service is standard at HX – though if you'd like to leave something extra, it's always appreciated
- Range of included activities



## ONBOARD ACTIVITIES

- In-depth lectures and discussions hosted by experts on the Expedition Team
- Full access to the ship's Science Corner
- The Citizen Science Program allows guests to assist with ongoing scientific research
- An onboard professional photographer will give tips and tricks for taking the best landscape and wildlife photos
- Informal gatherings with the crew for daily briefings

## LANDING ACTIVITIES

- Escorted and guided landings with small panga boats
- Loan of all equipment for activities
- Expedition photographers on hand to assist you

## NOTES

- All planned activities are subject to weather conditions
- Your flight from Baltra will be to Guayaquil. If you wish to end your expedition in Quito, please advise your booking agent
- Quito's altitude is at approximately 9,350 feet above sea level and during your stay, you might experience mild altitude sickness
- Excursions and activities are subject to change
- Please make sure you meet all entry and boarding requirements
- Depending on your flight times, an additional overnight might be needed (not included)

# 7-DAYS GALÁPAGOS ISLANDS

ICONIC WILDLIFE & SUBLIME SCENERY

## WESTERN ROUTE



PRICE FROM

**CAD\$ 8,350**

BEFORE

~~\$12,690/PERSON~~

**Additional Incentives Available  
for Webinar Attendees**

LIVE WEBINAR

MAY 22, 2025 | 1:00 PM - 2:00 PM EDT

**REGISTER NOW**



[https://info.glpworldwide.com/cc20250501-hx\\_galapagos\\_islands](https://info.glpworldwide.com/cc20250501-hx_galapagos_islands)

## CONTACT



1.866.760.1987



[info@glpworldwide.com](mailto:info@glpworldwide.com)



[www.travelfortravellers.com](http://www.travelfortravellers.com)



26-1211 Denison St, Markham, ON  
L3R4B3, Canada