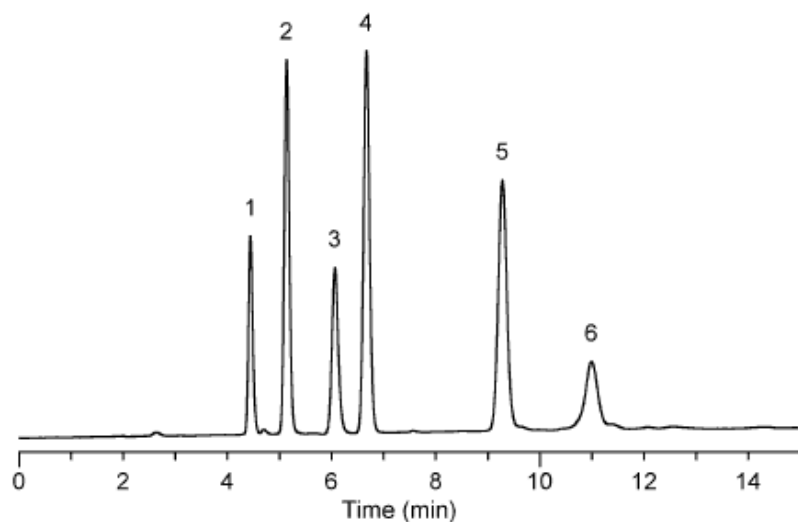


InertSearch™ for LC

Inertsil® Applications

Analysis of Endocrine disruptors

Data No. LA334-0000



No.	Peak Name	R.Time	Area
1	Phenol	4.440	44221
2	Diethyl phthalate	5.133	99259
3	Bisphenol-A	6.063	56213
4	2,4-Dichlorophenol	6.667	121890
5	4-Octylphenol	9.277	116424
6	4-Nonylphenol	10.987	44811

Column : Inertsil CN-3
5µm
250×4.6mmI.D.

Column Cat. No. :

Eluent : Acetonitrile / 20mM Potassium phosphate buffer(pH3.0)
= 45 / 55

Flow rate : 1.0mL/min

Col. Temp. : 40°C

Detection : UV 280 nm

Injection Vol. : 3µL

Sample : Phenol (0.06 mg/mL)
Diethyl phthalate (0.12mg/mL)
Bisphenol-A (0.02 mg/mL)
2,4-Dichlorophenol (0.06 mg/mL)
4-Octylphenol (0.12 mg/mL)
4-Nonylphenol (0.12 mg/mL)

Solutes : 1. Phenol 4.440 44221
2. Diethyl phthalate 5.133 99259
3. Bisphenol-A 6.063 56213
4. 2,4-Dichlorophenol 6.667 121890
5. 4-Octylphenol 9.277 116424
6. 4-Nonylphenol 10.987 44811