



Pure
DELIGHT *in*
every **DETAIL**

SANS SOUCI

LOCATIONS & I

ALCHYMIA - FIERA

FLUX CELESTIAL

PEARL

VITARA

ALCHYMIA ATELIER

FLUX CELESTIAL

BOWLS

LILY

SALVIONI MILANO DURINI SHOWROOM

FLAMENCO

AA CONSULTANT OFFICE

FLUX

SAWAYA & MORONI SHOWROOM

BRANCHY

INSTALLATIONS



FLUX CELESTIAL



PEARL



BOWLS

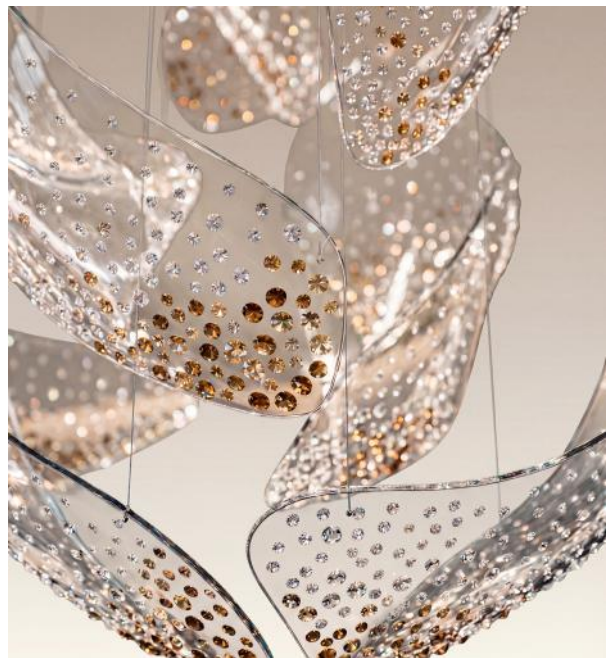


LILY

INSTALLATIONS



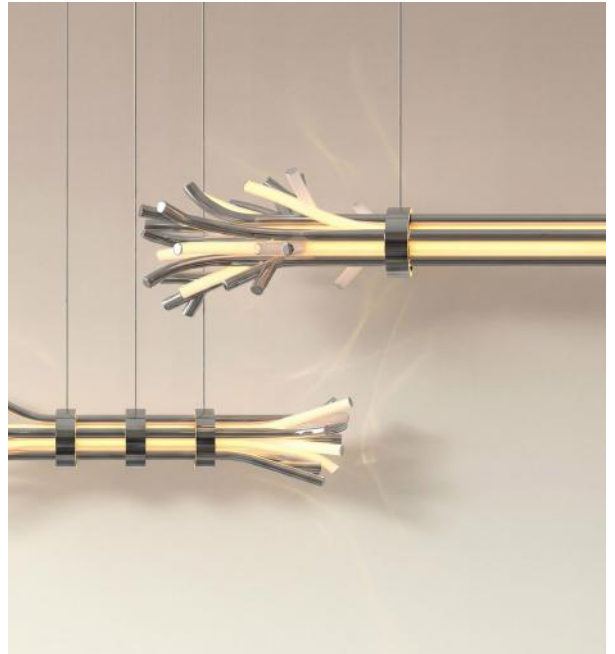
VITARA



FLUX CELESTIAL



FLAMENCO



BRANCHY



Alchym
F

nia
FIERA

FLUX CELESTIAL



*Designed by
Ivan Valigura*



Inspired by shifting landscapes and the cosmos, Flux Celestial blends flowing crystal forms with shimmering glass chatons, evoking celestial bodies in motion.

Technology & Finishes:

Slumped glass in crystal clear

Chatons with amber and aurum

nanocoating

Dia 1900 x H 1560 x OH 1800 mm









PEARL



*Designed by
Josef Oubrecht*



Pearl captures the beauty of shells beneath the water's surface. Organic crystal forms are delicately suspended, bringing this scenery into the interior.

Technology & Finishes:

Textured slumped glass in crystal clear, iridescent (AB) and aurum nanocoating, sandblasted finish

Dia 2600 x H 1500 x OH 2000 mm









VITARA



*Designed by
Martin Opl*



Inspired by Czech Gothic architecture, its pointed arches and delicate tracery, Vitara creates an interplay of light and shadow, echoing centuries-old craftsmanship.

Technology & Finishes:

Premium structured glass with aurum nanocoating

L 3300 x W 800 x H 1300 x OH 1900 mm









Alchym
AT

nia
ELIER

FLUX CELESTIAL



*Designed by
Ivan Valigura*



Inspired by shifting landscapes and the cosmos, Flux Celestial blends flowing crystal forms with shimmering glass chatons, evoking celestial bodies in motion.

Technology & Finishes:

Slumped glass in crystal clear

Chatons with amber and aurum

nanocoating

Dia 1500 x H 760 x OH 1400 mm









BOWLS



*Designed by
Katarina Lukačková*



Suspended in a flowing composition, each crystal piece in opal and contrasting gold nanocoating creates a fluid wave of light and a contemporary statement.

Technology & Finishes:

Handblown glass in opal with aurum nanocoating

L 1500 x W 800 x H 850 x OH 1400 mm









LILY



*Designed by
Radek Brezar*

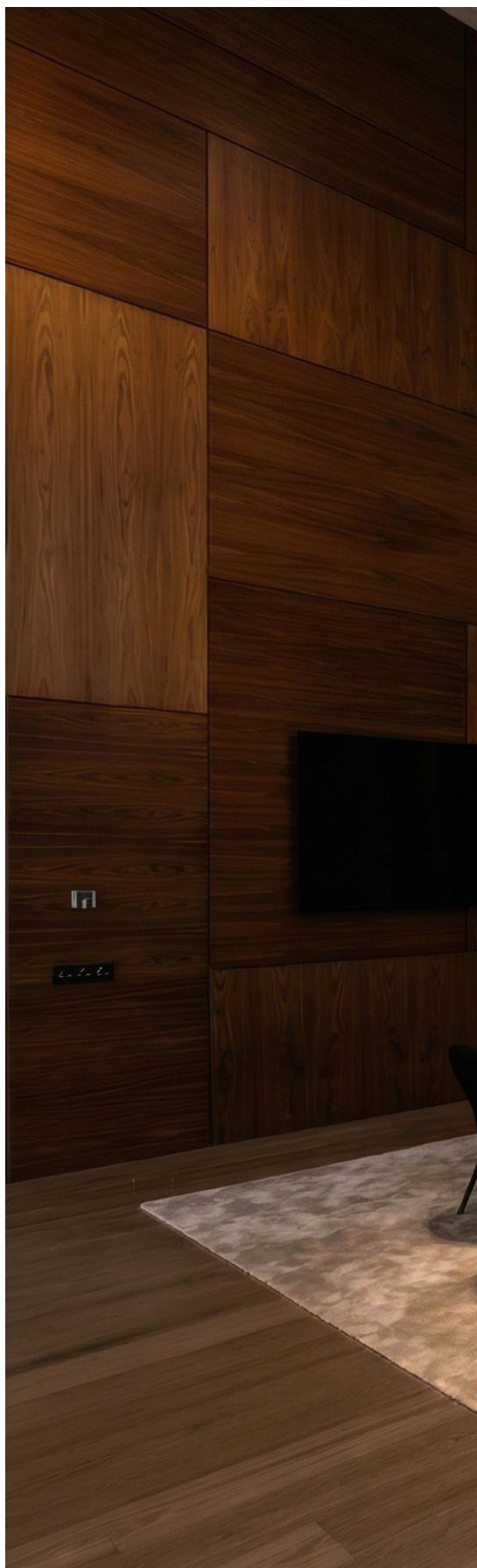


Sandblasted crystal petals with opal mist radiate soft light. Fitted to a gold stem, each Lily bloom creates a beautifully organic bouquet that crowns the interior.

Technology & Finishes:

Handblown glass with opal mist and sandblasted finish

L 1700 x W 1400 x OH 1547 mm









Salvioni Mil
SHOW

ano Durini
/ROOM

FLAMENCO



*Designed by
Jiří Krišica*

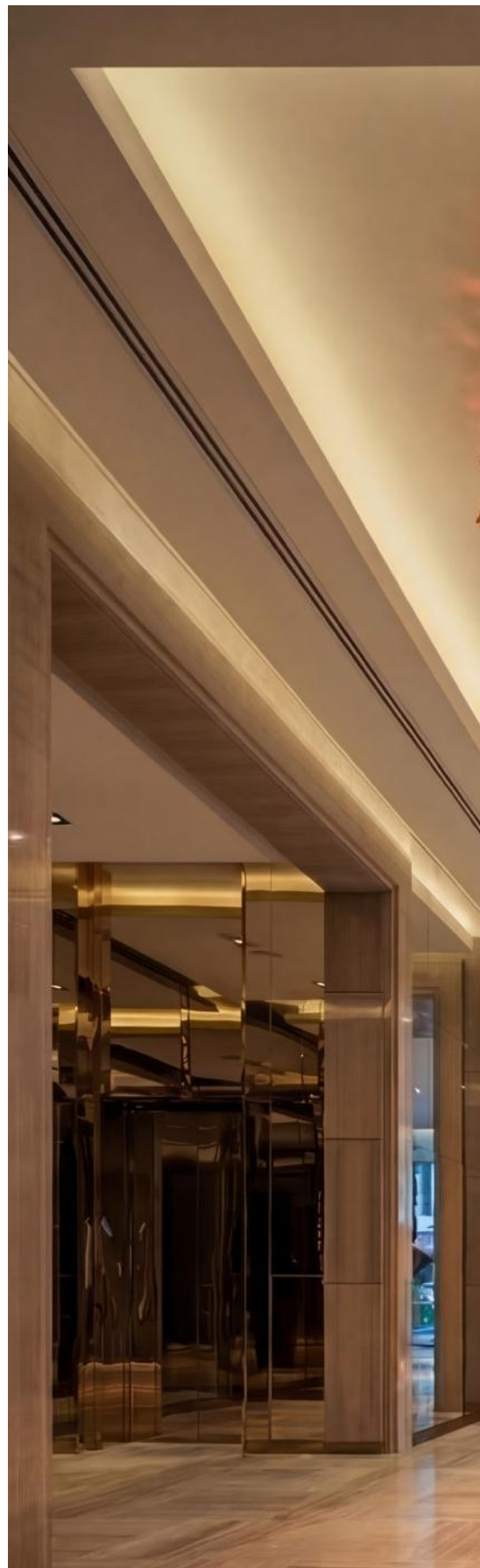


Handblown crystal pieces evoke the dramatic flow of a dancer's skirt, as Flamenco brings the fiery spirit and rhythm of Andalusian dance into the interior.

Technology & Finishes:

Handblown glass with amber and fuchsia mist, Crystal clear with soda

L 5500 x W 2500 x H 800 x OH 900 mm









AA
CONSUL

ULTANT
Office

FLUX



*Designed by
Ivan Valigura*



Capturing the beauty of transformation, Flux celebrates the moment ice begins to thaw and its forms shift, revealing change in its purest form.

Technology & Finishes:

Textured slumped glass with aurum nanocoating and sandblasted finish

L 2200 x W 1200 x H 840 x OH 1040 mm





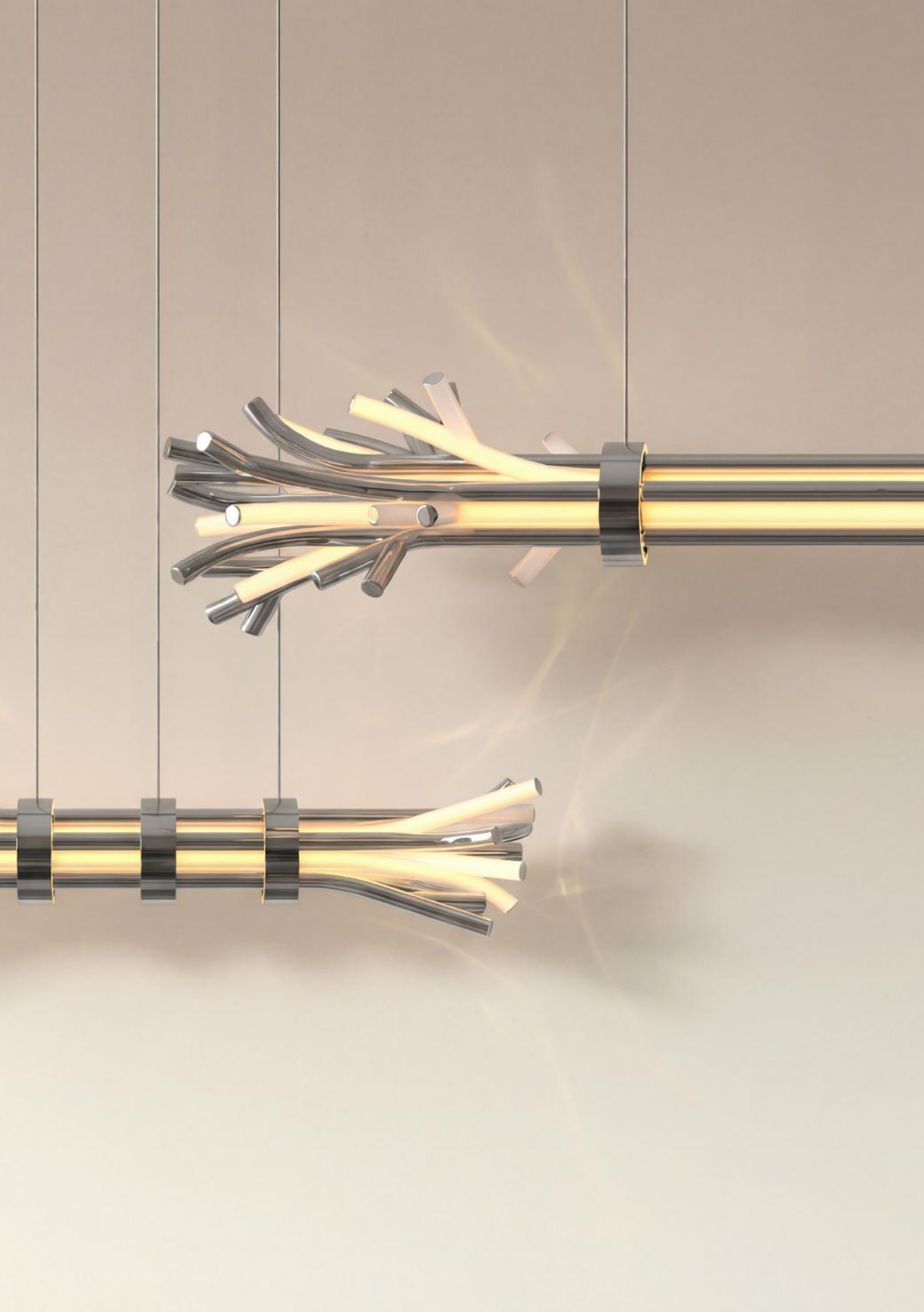
SAWAYA & SHOW

& MORONI
ROOM

BRANCHY



*Designed by
William Sawaya*



Branchy tells the story of the first lightning strike – the primal moment when fire met wood, igniting a light that endured even after night fell.

Technology & Finishes:

Premium glass in rose or argent nanocoating and sandblasted finish

LINEAR L: 896 x 2267 x 3037 mm

LINEAR M: 617 x 2204 x 1622 mm









Pure DELIGHT: CAPTIVATE, O



At Sans Souci Lighting, every piece of glass we create tells a unique story – a narrative shaped by the skilled hands of Czech craftsmen, whose traditions are passed down through generations. Its designs are born from a profound respect for the art of glassmaking, seamlessly blending heritage with modern innovation.



Designed **TO** *crafted* **TO LAST**



ABOUT SANS SOUCI

The company was founded in 2005 in Crystal Valley in the Czech Republic – a region renowned for its rich tradition of hand-blown glass. This cradle of glassmaking is inscribed on the UNESCO Cultural Heritage List. With a production facility in Cvikov, a flagship showroom in Prague, and an expanding global presence, Sans Souci continually pushes the boundaries of design to create truly inspiring spaces.



EUROPE & NORTH AFRICA
europe@sanssoucilighting.com

GREAT BRITAIN
uk@sanssoucilighting.com

USA, CANADA AND LATIN AMERICA
northamerica@sanssoucilighting.com

MIDDLE EAST
me@sanssoucilighting.com

KSA
ksa@sanssoucilighting.com

SOUTHEAST ASIA
southasia@sanssoucilighting.com

MAINLAND CHINA
shanghai@sanssoucilighting.com

**JAPAN AND REPUBLIC OF KOREA, HONG
KONG, MACAU AND TAIWAN**
hongkong@sanssoucilighting.com

EUROASIA & CIS
cis@sanssoucilighting.com

INDIA
india@sanssoucilighting.com

AUSTRALIA
australia@sanssoucilighting.com

B2B PRODUCTS & COOPERATION
authorizedpartners@sanssoucilighting.com

SANS SOUCI

IN PARTNERSHIP WITH



ALCHYMIA

salvioni
design solutions

**& SAWAYA
MORONI**

AA
consultant



SANS SOUCI

Sans Souci *Milan Design Week Catalogue 2026*
Copyright © Sans Souci 2026

www.sanssoucilighting.com