

THE GALAPAGOS ISLANDS



Orbridge



Itinerary and Highlights (subject to change)

Day 1: EN ROUTE FROM U.S. | ARRIVE IN QUITO, ECUADOR After an evening arrival transfer to your five-star hotel—the only Relais & Châteaux property in Quito—for a restful night's sleep.
Overnight: Casa Gangotena

Day 2: QUITO During a full-day guided tour, explore historic Old Town, the San Francisco Market, La Compañía de Jesús and the Casa del Alabado Archaeological Museum. Gather for a welcome reception this evening.
Overnight: Casa Gangotena (B,L,R)

Day 3: QUITO | FLIGHT TO BALTRA | SANTA CRUZ: HIGHLANDS | PUERTO AYORA – EMBARKATION After breakfast take the approximate two-hour flight to Baltra Airport. Transfer to the Baltra Ferry Terminal to ferry to Santa Cruz Island for lunch. Afterward encounter the magnificent and iconic Galapagos giant tortoise. In the late afternoon arrive to your expedition vessel, *Isabela II*.
Overnight: *Isabela II* (B,L,D)

Day 4: SANTIAGO: PUERTO EGAS | CHINESE HAT ISLET After a wet landing, walk the trail and spot for land iguanas. This active location is ideal for snorkeling. Chinese Hat Islet features a spectacular walking trail and a cove where it's possible to see white-tipped reef sharks and the rare Galapagos penguin.
Overnight: *Isabela II* (B,L,D)

Day 5: GENOVESA: PRINCE PHILIP'S STEPS | DARWIN BAY Cruise the cliffs of Genovesa by panga boat, then climb Prince Philip's Steps to reach a flat walking trail. Watch for colonies of Nazca boobies and great frigatebirds. Alternatively, join a guided water tour or snorkel or kayak. Spend the afternoon exploring Darwin Bay.
Overnight: *Isabela II* (B,L,D)

Day 6: SANTA FE | SOUTH PLAZA Stroll Santa Fe's shoreline or snorkel along a natural wave barrier, or take a glass-bottom boat ride. At South Plaza walk the impressive cactus forest, which is surrounded by sea lion colonies, frigates, red-billed tropicbirds and swallow-tailed gulls.
Overnight: *Isabela II* (B,L,D)

Day 7: BALTRA – DISEMBARKATION | FLIGHT TO QUITO, ECUADOR Guests who are not joining the Machu Picchu Post-Tour will stay the night in Quito. Guests joining the Machu Picchu Post-Tour will take an evening flight from Quito to Lima, Peru.
Overnight: Wyndham Quito Airport (B,L)
Post-Tour: Wyndham Costa del Sol Airport

Day 8: QUITO | DEPART FOR U.S. After breakfast, transfer to the airport for flights home. (B)



What's Included

- 2 nights at 5-star Casa Gangotena in Quito (or similar) prior to embarkation
- 4 nights aboard the *Isabela II* featuring exploration by panga and glass-bottom boat, naturalist-led hikes and excursions, and evening lectures
- 1 night at Wyndham Quito Airport (or similar) after disembarkation
- 7 breakfasts, 6 lunches and 4 dinners plus a special welcome reception in Quito
- A guided city tour of Quito
- All excursions and presentations
- Complimentary use of shorty wetsuits, snorkeling equipment and ocean kayaks
- Galapagos National Park entrance fee and transit card
- Internal round-trip airfare between Quito and the islands as noted in the itinerary
- Gratuities to local guides, hotel porters and drivers in Quito
- Airport transfers for guests arriving and departing during the suggested times

Activity Level: Guests should be sure-footed on stairs and able to walk at least one mile on rocky, volcanic and uneven ground. Some optional nature hikes will be on irregular and steep terrain. Guests should also be comfortable managing wet beach landings and boarding small vessels. Maximum elevation: 9,350 feet in Quito

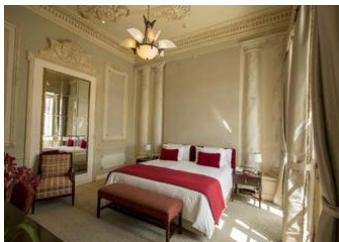
(B = Breakfast, L = Lunch, D = Dinner, R = Reception)



Hotel Accommodations *(subject to change)*

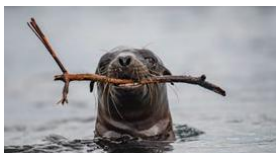
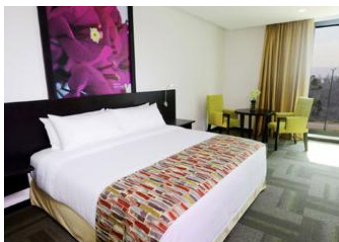
CASA GANGOTENA – QUITO

Before embarkation, stay at five-star Casa Gangotena. Located across from Plaza San Francisco in the heart of Quito's Spanish Colonial Old Town, the hotel offers easy access to the rich culture, tradition and charm of the city's historic center.



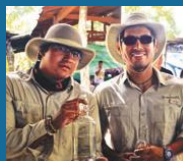
WYNDHAM QUITO AIRPORT HOTEL

Conveniently located near the Mariscal Sucre International Airport, the Wyndham Quito Airport Hotel offers comfortable and convenient accommodations for the last night of the program.



Your Expedition Leader

Viewing the Galapagos Islands alongside an Orbridge Expedition Leader is a special experience. While observing wildlife, they will offer expert descriptions of methods of survival and behaviors. Together on panga rides, nature walks, and aboard the *Isabela II*, you will gain understanding of the endangered species who inhabit the waters and land of the archipelago.



Orbridge

Onboard *Isabela II*

Accommodating only 40 guests, the 183-foot *Isabela II* was designed to provide the ultimate in comfort and adventure while cruising the Galapagos Islands. Guests can savor fresh, delicious international and Ecuadorian cuisine at every meal. Enjoy the spacious public decks, dining room, lounge, library, hot tub and fitness room.



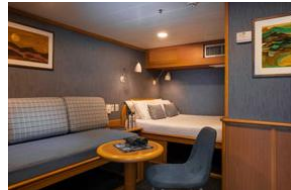
Standard

Full-size bed, window, private bathroom with shower. 128 sq. ft.



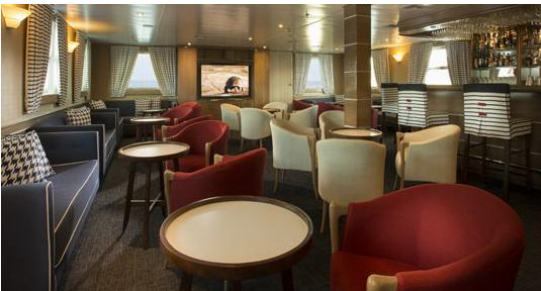
Classic Twin

Two twin beds, view window, private bathroom with shower. 139 sq. ft.



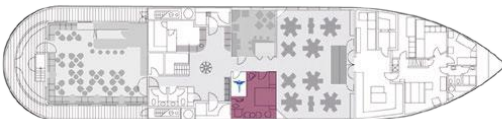
Classic Double

Full-size bed, view window, daybed, private bathroom with shower. 139 sq. ft.

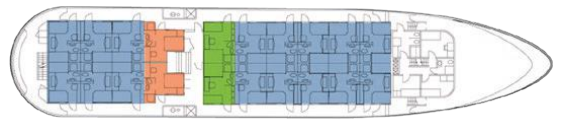


Premium Suite

Queen bed, view window, wardrobe, private bathroom with shower. 170 sq. ft.



Main deck



Cabin deck



Optional Pre-Tour Mashpi Lodge

Immerse yourself in the unparalleled natural beauty and exclusivity of Mashpi Lodge. Delve into the ecological wonders of the rainforest through interactive workshops, enriching nature activities and expert-led discussions that provide valuable insights into the region's unique flora and fauna.

Day +1: ARRIVE IN QUITO, ECUADOR Transfer to your five-star hotel to refresh for tomorrow's full day of activities.
Overnight: Casa Gangotena

Day +2: MASHPI LODGE | MASHPI RESERVE After breakfast, journey 3.5 hours, arriving at award-winning Mashpi Lodge. Settle into your elegantly appointed room, featuring locally-inspired décor. Floor-to-ceiling windows offer breathtaking views of the surrounding greenery, creating an enchanting ambiance amidst the tranquility of your room. Enjoy lunch, then choose from several optional activities. Take a guided hike to one of several waterfalls or follow the Howler Monkey Trail to the Life Centre, which provides extensive information about the rainforest's incredible biodiversity. Return to the lodge to rejuvenate among the property's five-star amenities. Take a leisurely dip in the open-air rooftop hot tub, or visit the spa for a luxurious treatment (*additional fee applies*) complemented by the soothing sounds of the rainforest.
Overnight: Mashpi Lodge (B,L,D)

Day +3: MASHPI LODGE | MASHPI FOREST CANOPY EXPLORATION Today get a birds-eye view of the Mashpi Forest canopy during a guided ride aboard the *Dragonfly*—an aerial cable car. Go for the entire two-hour ride, or combine the *Dragonfly* experience with a guided nature or waterfall hike. This evening, join fellow travel companions to hear a collection of lectures by a resident biologist or naturalist.
Overnight: Mashpi Lodge (B,L,D)

Day +4: MASHPI | QUITO | MAIN PROGRAM BEGINS After breakfast and final activities at the lodge, take a group transfer to Quito for lunch before joining the group for the main program. (B,I)

What's Included

- 1 night at Casa Gangotena in Quito
- 2 nights at award-winning Mashpi Lodge
- 3 breakfasts, 3 lunches and 2 dinners (soft drinks available at all meals)
- Entrance to Mashpi Reserve
- *Dragonfly* aerial tram experience
- Full guiding services including interpretation on all activities and experiences within the reserve
- Specialized lectures and field presentations on research conducted in the reserve by local experts
- Use of rain gear (waterproof poncho, rubber boots), walking sticks, spotting scopes and binoculars
- All transportation for excursions using vehicle transport in the reserve
- All gratuities and portorage
- Airport transfers for guests arriving during the suggested times
- Round-trip group transportation between Quito and Mashpi Lodge



Optional Post-Tour Machu Picchu

Travel to the mist-shrouded mountain citadel of the Incas. Explore the famous city of Cusco and the Sacred Valley of the Incas. Ride the train through the Urubamba Valley, and break bread in the home of a local Peruvian family outside of Cusco.

Day 8: LIMAI FLIGHT TO CUSCO | SACRED VALLEY Meet your guide and transfer to the Sacred Valley for a late lunch followed by a guided tour of the Yucay Museum of Living Culture. Arrive to your hotel to relax before dinner on your own.
Overnight: Sonesta Posadas del Inca – Yucay (B,L)

Day 9: SACRED VALLEY | MACHU PICCHU See the massive fortress at Ollantaytambo where the Inca won their greatest victory against the conquistadores. Board the *Vistadome* train to Aguas Calientes. Have lunch at Machu Picchu Sanctuary Lodge, followed by guided exploration of the ruins.
Overnight: Inkaterra Machu Picchu Pueblo Hotel (B,L,D)

Day 10: MACHU PICCHU | SACRED VALLEY | CUSCO Experience a quiet morning at Machu Picchu with exploration from the upper citadel, then begin the return to Cusco.
Overnight: Aranwa Cusco Boutique Hotel (B)

Day 11: CUSCO | SACSAYHUAMAN | KENKO | VILLA TIPON | CUSCO Visit San Pedro market and Qorikancha (Temple of the Sun). Continue to Sacsayhuaman and the Kenko archaeological sites. Enjoy lunch at a private home and hear an informative discussion about modern Peru. Witness a traditional Pachamama ceremony. The remainder of the afternoon and evening are at leisure.
Overnight: Aranwa Cusco Boutique Hotel (B,L)

Day 12: CUSCO Enjoy a full day to explore the city's museums, artisanal shops and central square. Gather for a special farewell dinner this evening.
Overnight: Aranwa Cusco Boutique Hotel (B,D)

Day 13: CUSCO | FLIGHT TO LIMA | DEPART FOR U.S. After breakfast transfer to the airport for an afternoon flight to Lima. A group suite is available while waiting for departing international flights home.
Group Suite: Wyndham Costa del Sol (B)

What's Included

- 6 nights premium accommodations and a group room on departure day
- 6 breakfasts, 3 lunches and 2 dinners
- Fully guided tours and field presentations from local experts
- All ground excursion transportation including the *Vistadome* train through the Urubamba Valley
- Luggage portorage
- Gratuities to guides, drivers and wait staff for included meals
- Airport assistance for guests arriving and departing during the suggested times

