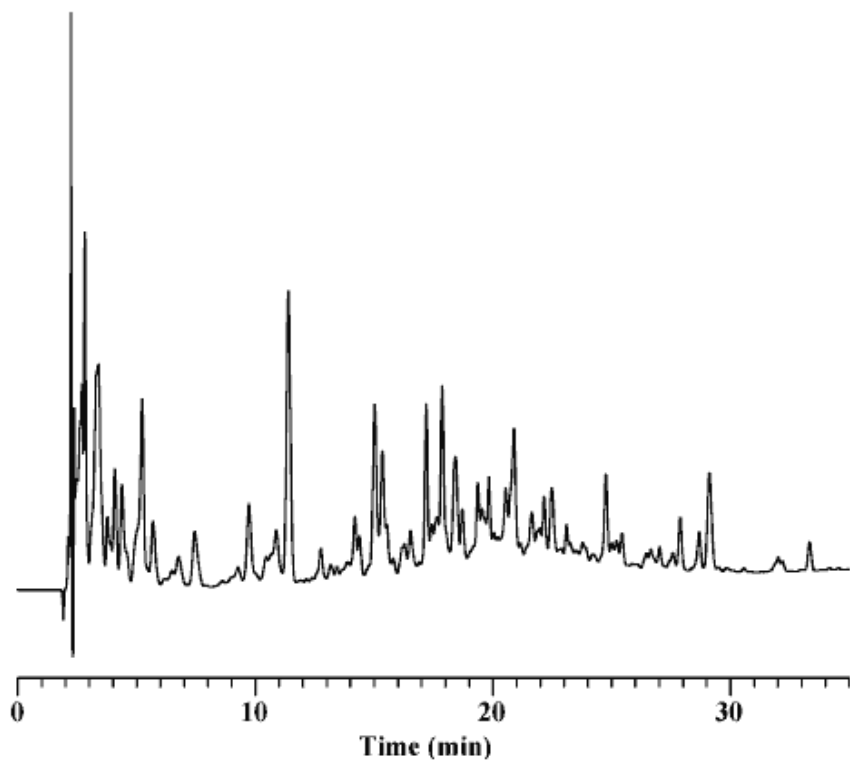


# Tryptic Digest of BSA

Data No. LA411-0000



Column : Inertsil WP300 C8  
5µm  
150 × 4.6 mm I.D.

Solutes : Tryptic Digest of BSA (5 mg/mL, 37°C, 24 h)

Column Cat. No. : 5020-05745

Eluent : A) 0.1 % TFA in CH<sub>3</sub>CN/H<sub>2</sub>O = 2/98  
B) 0.1 % TFA in CH<sub>3</sub>CN/H<sub>2</sub>O = 90/10  
A/B = 90/10 - 5 min. - 90/10 - 50 min. - 40/60

Flow rate : 1.0 mL/min.

Col. Temp. : 30°C

Detection : UV 214 nm

Injection Vol. :

Sample : Tryptic Digest of BSA