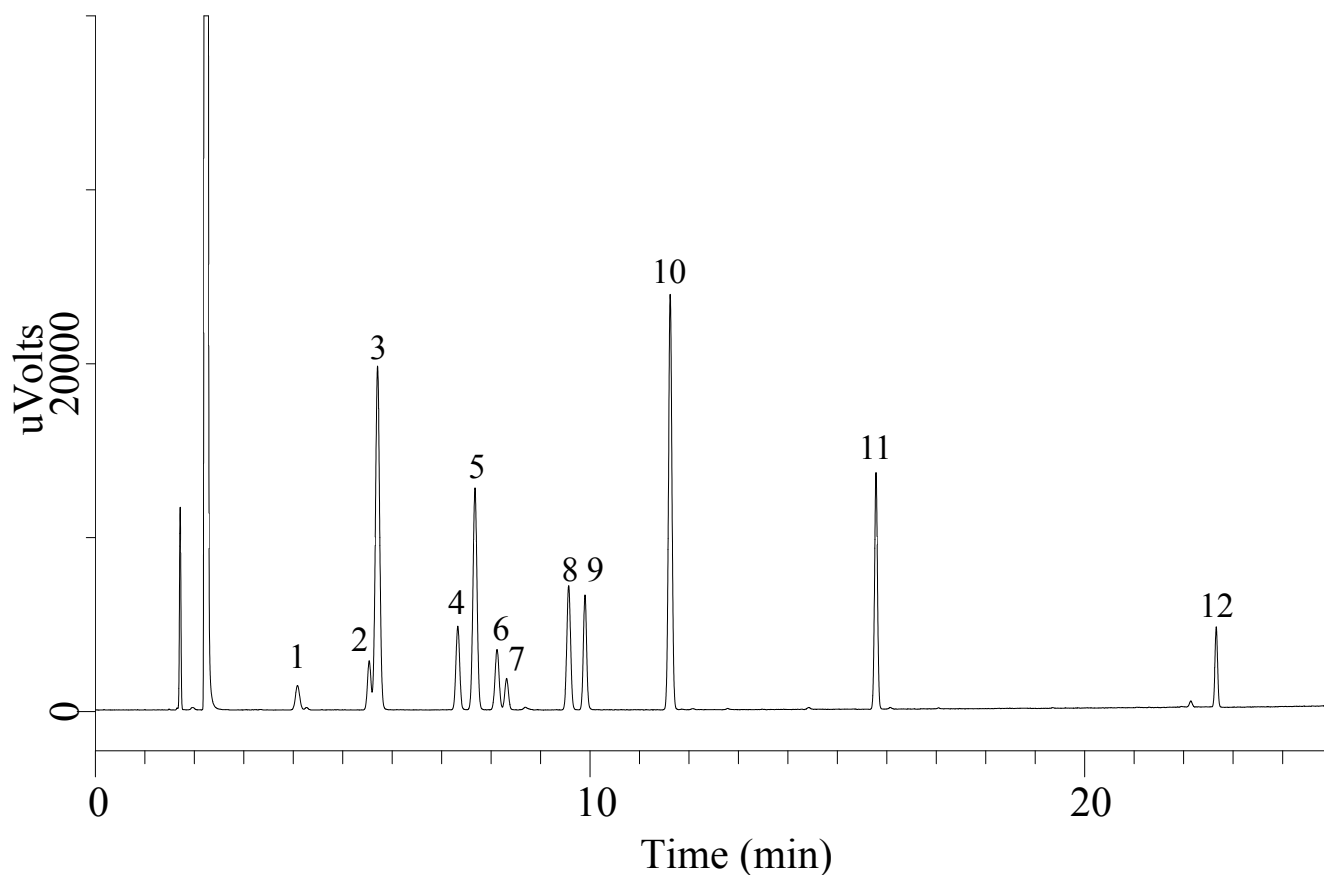


## Organic Solvents

Data No. GA 282-0644



### Conditions

<b>System</b>	: GC-FID	<b>Analyte</b>	: 1. Carbon tetrachloride
<b>Column</b>	: InertCap WAX 0.53 mm I.D. x 30 m df = 1.0 µm		2. Dichloromethane
<b>Col. Cat. No.</b>	: 1010-67445		3. Benzene
<b>Col. Temp.</b>	: 40 °C (5 min hold) - 5 °C/min - 180 °C		4. Trichloroethylene
<b>Carrier Gas</b>	: He 5 mL/min		5. 4-Methyl-2-pentanone(MIBK)
<b>Injection</b>	: Split flow 50 mL/min 220 °C		6. Tetrachloroethylene
<b>Detection</b>	: FID Auto Range 220 °C		7. Chloroform
<b>Sample Size</b>	: 100 µg/mL in Carbon disulfide 1.0 µL		8. 1,4-Dioxane
			9. 1,2-Dichloroethane
			10. Ethylbenzene
			11. Styrene
			12. 1,1,2,2-Tetrachloroethane