



**TRAVELING  
IRISH™**

**JULY 26 - AUGUST 4, 2025**

with optional  
Bristol, Bath & The Cotswolds Pre-Tour  
and St. Andrews Post-Tour

# STUNNING SCOTLAND



**Orbridge**

**HIGHLANDS & ISLANDS**



Urquhart Castle, Loch Ness



Dear Alumni and Friends,

Join us as we explore the inspiring history, exuberant culture and fascinating sites of Scotland. From windswept highlands to serene islands, home to revered castles and iconic towns, Scotland is a vibrant country overflowing with rich traditions, natural beauty and welcoming hospitality.

Wander cobblestoned streets during panoramic city tours, explore historic castles and colorful gardens, and sample heavenly spirits refined over centuries. Experience the pure magic that is Scotland by cruising legendary Loch Ness, and admire the region's dramatic cliffs and picture-perfect landscapes.

This journey also provides access to Culloden Battlefield and behind-the-scenes touring of Glamis Castle. An additional special inclusion features the electric atmosphere of the Royal Edinburgh Military Tattoo—a thrilling, international performance of music, dance and military artistry. Witness the spellbinding sights and sounds of global talent accompanied by special effects that bring Edinburgh Castle to life in a unique way.

Availability is limited. With significant savings of more than \$1,000 per couple, we anticipate this tour will fill quickly. To reserve, visit [notredame.orbridge.com](http://notredame.orbridge.com), call (866) 639-0079 or return the attached reservation form.

For Notre Dame,

Dolly Duffy '84  
Executive Director  
Notre Dame Alumni Association

Christa LeeVan  
Travel Program Director  
Notre Dame Alumni Association

The Notre Dame travel program is available to alumni, their families, friends and colleagues. For a listing of all Traveling Irish programs, visit [travelingirish.nd.edu](http://travelingirish.nd.edu).

# Stunning Scotland | Itinerary and Highlights *(subject to change)*

**Day 1: EN ROUTE FROM U.S.**

**Day 2: ARRIVE IN GLASGOW, SCOTLAND** Upon arrival to Glasgow Airport transfer to the hotel. Tonight's highlight includes a proper Scottish welcome dinner and private after-hours tour at Kelvingrove Art Gallery and Museum.

Overnight: Radisson Blu Hotel, Glasgow (D)

**Day 3: GLASGOW | NEW LANARK | GLASGOW**

Following a hearty Scottish breakfast, take a guided tour of New Lanark, a UNESCO World Heritage Site. Learn about life in the village throughout the years and the visionary ideals that inspired its Utopian foundation. Stop by New Lanark Mill Hotel for a traditional afternoon tea. The remainder of the day is at leisure.

Overnight: Radisson Blu Hotel, Glasgow (B,L)

**Day 4: GLASGOW | STIRLING | GLENCOE**

Journey north for a self-guided tour of stately Stirling Castle and its lovely gardens. In the village of Killin, stop at family-owned Falls of Dochart Smokehouse. Meet the proprietors and hear about the smoking process and the importance of salmon in local traditions followed by a whisky tasting with salmon canapés. Continue to Glencoe National Nature Reserve with time to explore. Arrive to the hotel and refresh before dinner.

Overnight: Ballachulish Hotel (B,D)

**Day 5: GLENCOE | THE SCOTTISH HIGHLANDS**

Visit Inveraray Castle—the ancestral home of the Duke of Argyll, Chief of the Clan Campbell. Stop in the charming village of Luss for a brief walk admiring its quaint slate cottages and panoramic views. Continue to Loch Lomond for a relaxing boat cruise.

Overnight: Ballachulish Hotel (B,D)

**Day 6: LOCH NESS | INVERNESS**

After breakfast stop at the Commando Memorial and gardens. Continue to famous Loch Ness for a tour of Urquhart Castle. Peer into medieval life—learning of the area's history from nearly 1,000 years ago. Next embark upon a narrated cruise along the mysterious waters of Loch Ness.

Overnight: Kingsmills Hotel (B,D)

**Day 7: INVERNESS | ABERDEEN**

See Culloden Battlefield—the site of the final Jacobite Rising. Learn about the conflict from both sides through interactive displays and artifacts before walking the actual battlefield. Following lunch, visit Clava Cairns followed by a Scottish distillery tour and tasting.

Overnight: Ardoe House Hotel & Spa (B,L,D)

**Day 8: ABERDEEN | ST. ANDREWS | EDINBURGH**

Visit Glamis Castle for an exclusive behind-the-scenes tour. At St. Andrews, drive by the Old Course and explore local cafés and boutique shops during leisure time. This evening prepare for an unforgettable performance of the iconic Edinburgh Military Tattoo.

Overnight: Kimpton Charlotte Square Hotel (B)

**Day 9: EDINBURGH**

Take a guided panoramic city tour of Edinburgh. Afterward visit the Palace of Holyroodhouse, the previous residence of Mary, Queen of Scots. Enjoy a special farewell dinner this evening.

Overnight: Kimpton Charlotte Square Hotel (B,D)

**Day 10: EDINBURGH | DEPART FOR U.S.**

After breakfast guests departing during the suggested times take the complimentary transfer to the airport for flights home. (B)

(B = Breakfast, L = Lunch, D = Dinner)





## What's Included

- 8 nights hotel accommodations
- 8 breakfasts, 2 lunches and 6 dinners including special welcome and farewell meals
- Full guiding services of an Orbridge Travel Director and expert local guides
- Private motor coach transportation
- Admission to all locations listed on the 10-day itinerary including the performance of the Royal Edinburgh Military Tattoo
- All ferry fees
- Gratuities to Orbridge Travel Director, local guides, drivers, porters (where available) and wait staff for included meals
- Airport transfers for guests arriving and departing during the suggested times

**Orbridge**

## Your Travel Director:

Enriched from the wealth of expertise provided by your Orbridge Travel Director, you'll enjoy the cultures and locations you explore with added confidence, understanding and appreciation.

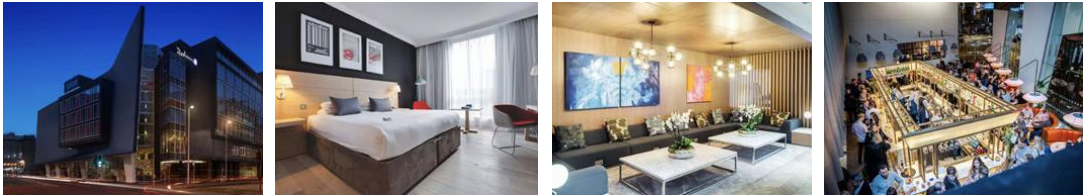


**Activity Level:** The majority of the program's activities will take place outdoors and a fair amount of walking on varying terrain is to be expected. It is our expectation that guests on this program are able to walk a mile at a moderate pace, get in and out of a motor coach, and walk up a flight of stairs without assistance.

Accommodations *(subject to change)*

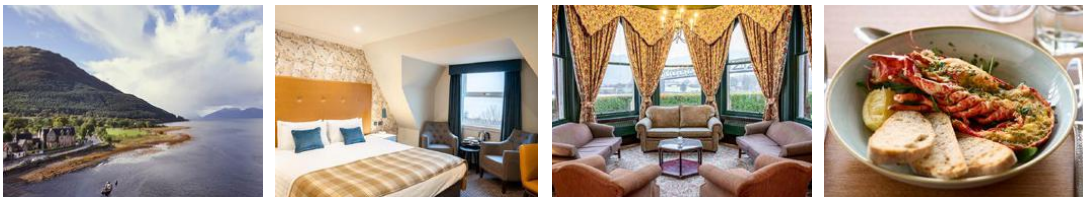
**RADISSON BLU HOTEL, GLASGOW**

Glasgow's iconic Radisson Blu Hotel provides central access to shops and restaurants along with comfortable, modern rooms and wellness facilities.



**BALLACHULISH HOTEL**

Nestled along the banks of scenic Loch Linnhe, this charming and cozy property is ideal for recharging after fruitful days of exploration.



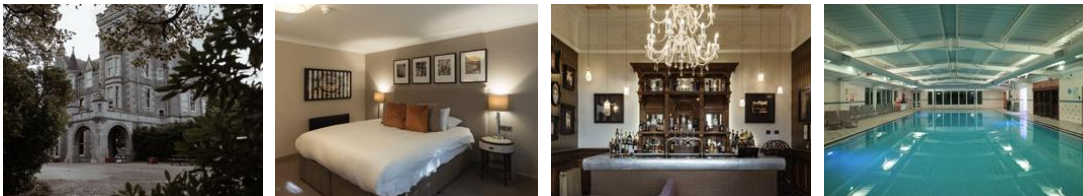
**KINGSMILLS HOTEL**

The property offers a unique mix of classic style and contemporary comforts, with spacious guest rooms boasting charming décor and modern amenities.



**ARDOE HOUSE HOTEL & SPA**

Situated amidst 30 stunning acres, this 19th-century baronial mansion offers stylish, modern amenities and warm hospitality. During leisure time unwind in the Whisky Bar or take advantage of the large indoor pool.



**KIMPTON CHARLOTTE SQUARE HOTEL**

Ideally located beside New Town, a UNESCO World Heritage Site, this property—which features seven interconnected Georgian townhouses—overlooks one of Edinburgh's prettiest private garden squares.



# Optional Pre-Tour

## Bristol, Bath & The Cotswolds

Join this enchanting escape to the heart of England—a journey that weaves together colorful culture, timeless elegance and idyllic charm. From Bristol's eclectic street art scene and Bath's ancient Roman relics to the Cotswolds' picturesque villages, discover a captivating blend of urban excitement, historic grandeur and bucolic tranquility.

**Day +1: EN ROUTE FROM U.S.**

**Day +2: ARRIVE IN LONDON, ENGLAND | BRISTOL** Upon arrival transfer to Paddington Station for the train ride to Bristol. Nestled beside the River Avon, this vibrant city in the southwest of England offers a compelling blend of rich history and cutting-edge culture. Enjoy time to explore the city at leisure. Later experience an unforgettable three-course dinner at The Ivy Clifton situated within a beautifully restored Georgian building.  
Overnight: Clayton Hotel Bristol City (D)

**Day +3: BRISTOL | BATH** Set out for the Clifton Suspension Bridge for photography opportunities. Continue to the Cheddar Gorge Cheese Company. Browse through the shop's shelves of delicious cheeses plus locally made preserves, pickles and chutneys. Enjoy the scenic drive to the UNESCO World Heritage city Bath for an evening visit to the Roman Baths, one of the best-preserved Roman remains in the world. Exploring the grounds by flashlight adds a magical ambiance to the experience.  
Overnight: Clayton Hotel Bristol City (B,L)

**Day +4: THE COTSWOLDS** Head north into the Cotswolds, a designated Area of Outstanding Natural Beauty renowned for its quintessential English charm, honey-colored limestone cottages and undulating terrain. Visit The Cotswolds Baking Workshop for a private, hands-on baking class with its founder. Next enjoy a tour and tasting a Cotswolds Distillery—the first ever full-scale distillery in the Cotswolds.  
Overnight: Clayton Hotel Bristol City (B)

**Day +5: BRISTOL | TRAIN TO GLASGOW | MAIN PROGRAM BEGINS** After breakfast take the complimentary group transfer to Bristol Temple Meads for the train journey to Glasgow, Scotland, to join guests for the main program. (B)

## What's Included

- Rail transportation from London to Bristol
- 3 nights at Clayton Hotel Bristol City (or similar)
- 3 breakfasts, 1 lunch and 1 dinner
- Visit to Cheddar Gorge Cheese Company
- Evening visit to the Roman Baths
- Private baking lesson
- Gratuities to local guides, drivers, porters and wait staff for included meals
- Rail transportation from Bristol to Glasgow, Scotland
- Group airport transfers for guests arriving during the suggested times



# Optional Post-Tour St. Andrews

Famous for its golf links and stunning architecture, St. Andrews is a beautiful university town worth exploring. Whether walking its medieval streets or partaking in optional golf or afternoon tea activities, St. Andrews offers a truly enriching Scottish experience.

**Day 10: EDINBURGH | ST. ANDREWS** En route to St. Andrews, visit the Falkirk Wheel—an exceptional feat of modern engineering and an inspirational work of art. The distinctive new visitor center allows observers to watch the Wheel in action. At St. Andrews, enjoy lunch at a local pub/restaurant then walk the legendary Old Course. The remainder of the day and evening are at leisure. Overnight: Old Course Hotel (L)

**Day 11: ST. ANDREWS** After breakfast enjoy St. Andrews independently or join the optional Golf Tee Time excursion available for purchase. This afternoon experience an award-winning traditional tea with desserts at the Old Course Hotel featuring a delicious selection of delicate pastries and cakes, including homemade scones as well as strawberry and pink champagne preserves. Overnight: Old Course Hotel (B)

**Day 12: ST. ANDREWS | EDINBURGH | DEPART FOR U.S.** After breakfast guests departing during the suggested times take the complimentary transfer to the airport for flights home. (B)



## What's Included

- 2 nights accommodations at the Old Course Hotel
- 2 breakfasts and 1 lunch
- Afternoon traditional tea experience
- Admission and fees for included activities
- Gratuities to local guides, drivers, porters and wait staff for included meals
- Private transportation
- Airport transfers for guests departing during the suggested times



## Golf Tee Time (\$365 per person)

Play a round on St. Andrews' The Duke's course—highly regarded as one of the finest championship courses in the British Isles and a must-play course for any golfer. Package includes greens fee, golf cart, rental clubs, and roundtrip transfers between the hotel and course. *Tee times and the course are subject to availability at time of booking.*

STUNNING SCOTLAND

JULY 26 - AUGUST 4, 2025

Bristol, Bath & The Cotswolds Pre-Tour: July 23-27, 2025  
St. Andrews Post-Tour: August 4-6, 2025

Reserve by Credit Card:

Online: [notredame.orbridge.com](https://notredame.orbridge.com)  
Phone: (866) 639-0079  
Fax: (206) 452-5655

Reserve by Check:

Made payable to Orbridge, LLC  
Mail to: Orbridge, P.O. Box 1376  
Poulsbo, WA 98370

We strongly suggest purchasing travel insurance. Travel insurance information will be emailed to you by the Notre Dame Alumni Association with your confirmation letter or visit their website at [travelingirish.nd.edu](https://travelingirish.nd.edu) and click on Travel Insurance to register online.

Traveling Irish contact: [alumtrav@nd.edu](mailto:alumtrav@nd.edu) or [travelingirish.nd.edu](https://travelingirish.nd.edu)

GUEST INFORMATION:

Guest #1 Name (Title/Salutation): \_\_\_\_\_  
Email: \_\_\_\_\_ Class Year: \_\_\_\_\_  
Home Phone: \_\_\_\_\_ Alt. Phone: \_\_\_\_\_  
Address: \_\_\_\_\_  
City: \_\_\_\_\_ State: \_\_\_\_\_ Zip: \_\_\_\_\_  
Guest #2 Name (Title/Salutation): \_\_\_\_\_  
Email: \_\_\_\_\_ Class Year: \_\_\_\_\_  
Home Phone: \_\_\_\_\_ Alt. Phone: \_\_\_\_\_

DEPOSIT PAYMENT:


☐ Check    ☐ ACH (Automated Clearing House)    ☐ MasterCard/Visa    ☐ American Express    ☐ Discover  
Card #: \_\_\_\_\_ Exp. Date: \_\_\_\_\_ CVV: \_\_\_\_\_  
Name (as printed on card): \_\_\_\_\_  
Billing Address (if different from above): \_\_\_\_\_  
City: \_\_\_\_\_ State: \_\_\_\_\_ Zip: \_\_\_\_\_

CATEGORY SELECTION & DEPOSIT:

Category Preference: 1st choice \_\_\_\_\_ 2nd choice \_\_\_\_\_  
# \_\_\_\_\_ guests joining pre-tour (\$500/person) +  
# \_\_\_\_\_ guests joining program (\$850/person) +  
# \_\_\_\_\_ guests joining post-tour (\$500/person) = **TOTAL DEPOSIT: \$** \_\_\_\_\_

POST-TOUR EXCURSION (added to your final invoice):

# \_\_\_\_\_ guests joining optional Golf Tee Time (\$365 per person)  
I/we have read, understand, and agree to the full Terms & Conditions at [terms.orbridge.com](https://terms.orbridge.com); and I/we agree that Orbridge, LLC is authorized to charge my credit card above and/or take my/our deposit for this program.  
Signature: \_\_\_\_\_ Date: \_\_\_\_\_

 Orbridge takes seriously the responsibility to minimize our global environmental impact. Each year we plant 100,000 trees in U.S. State Forests with afforestation needs as an ongoing initiative among our evolving sustainability efforts. Learn more at [orbridge.com/going-green](https://orbridge.com/going-green).

Category	Standard Rate	Special Rate*
Double	<del>\$6,999</del>	\$6,495
Single	<del>\$9,499</del>	\$8,995
Bristol, Bath & The Cotswolds Pre-Tour*		
Double	<del>\$2,399</del>	\$2,195
Single	<del>\$3,199</del>	\$2,995
Rail transportation between London, Bristol and Glasgow is included.		
St. Andrews Post-Tour*		
Double	<del>\$1,899</del>	\$1,695
Single	<del>\$2,399</del>	\$2,195

\*Special group rates; limited offer. Rates are per person based on double occupancy except where noted as Single, in U.S. dollars. Airfare not included. Single availability limited.

\*\*Expedition Libraries are useful resources and reading materials tailored to this program. Place your deposit on or before the specified date, and one Expedition Library per household will be sent after receipt of final payment. Libraries may be purchased; call for details.



Notre Dame Alumni Association  
100 Eck Visitors Center  
Notre Dame, IN 46556

# STUNNING SCOTLAND

JULY 26 - AUGUST 4, 2025

Special Alumni and Friends Rate:

Save more than \$1,000 per couple

**30-day refund guarantee**

## Association Disclaimer:

The University of Notre Dame, through its Alumni Association, is pleased to provide this service of facilitating travel opportunities for its Alumni and Friends. We strive to work with the best partners to make available interesting and enriching travel options for the Notre Dame family. Please note that the University does not conduct tours, nor does it act as an agent for guests interested in tours. The Alumni Association acts as a facilitator with tour operators, with whom tour participants make arrangements for completing travel. We are pleased to act as liaison with tour operators should you have any questions or concerns that may arise before, during, or after your tour. The Alumni Association encourages you to familiarize yourself thoroughly with the tour operator's cancellation and refund policies, and also to investigate available services such as trip cancellation insurance. The University is not responsible for changes to trips or travel arrangements, nor for losses or additional expenses resulting from travel. The Alumni Association reserves the right to withdraw its affiliation with any individual tour should conditions warrant.

**Travel Insurance:** We strongly suggest purchasing travel insurance. Travel insurance information will be sent to you by the Notre Dame Alumni Association with your confirmation email or visit [travelingirish.nd.edu](http://travelingirish.nd.edu) and click on Travel Insurance to register online.

FREE EXPEDITION LIBRARY  
AN EXCLUSIVE EARLY  
RESERVATION BONUS

Reserve by

**November 22, 2024\*\***

PRSRT STD  
U.S. POSTAGE  
PAID  
PERMIT NO. 825  
SAN DIEGO, CA