

Lymm Life

Magazine

Over 25 years of free community news

ISSUE 323 | JUNE 2026
DELIVERED FREE TO 5000 HOMES



urban

BUILDING PROJECTS LTD

Extension &
Building Renovation
Specialists

Tel: 01925 730888

www.urbanbuildingprojects.co.uk



Lymm Eye Clinic

Local, professional eyecare
when you need it

No referral necessary,
book your appointment online

www.lymmeyeclinik.co.uk

Tel: 07498 456312
16A The Cross, Lymm

Floral display for Anzac Day

Page 3

 Chambers
Fletcher
Solicitors

Family Law & Divorce
Residential Property
Commercial Property
Wills, Trusts & Probate

01925 359005

www.chambersfletcher.co.uk

Regular news updates at www.warrington-worldwide.co.uk

Editor
Gary Skentelbery

Production
James Bryan

Advertising
James Balme
Telephone
01925 631592

Editorial
01925 623633

Email
info@lymmlife.co.uk

Websites
www.lymmlife.co.uk
www.culchethlife.com
www.frodshamlife.co.uk
www.warrington-
worldwide.co.uk

Address
New Media Centre
Old Road Warrington
WA4 1AT

*Lymm Life is published
monthly by Orbit News Ltd.*

*The contents of this magazine
are fully protected by copyright
and nothing may be reprinted
or reproduced without prior
permission of the publishers.*

*The publishers are not liable for
any statement made or opinion
expressed by third parties in this
publication.*

Printed by TwentyFourSeven

Editor's Opinion



Lymm is often described as the "jewel in the crown" of Warrington, but lately, that jewel feels like it has lost some of its sparkle.

If you've tried to navigate the village recently, you'll know the frustration isn't just about finding a parking spot; it's about a village core that feels increasingly under siege from two fronts: disruptive infrastructure projects and a persistent hum of anti-social behaviour.

The most immediate headache is the labyrinth of roadworks. Replacing aging power cables is, of course, a logistical necessity.

We all want reliable electricity, but the execution has turned the village highways into a nightmare.

The rolling closures and temporary lights have choked the life out of local commerce. For a village that thrives on its independent spirit, these delays are more than an inconvenience—they are a deterrent.

Shoppers are bypassing the village where the journey doesn't involve a twenty-minute crawl through bottlenecks. The lack of clear, long-term communication has left us and residents feeling like they are living in a permanent construction site.

However, once the sun sets a different set of issues emerges around The Cross. This historic landmark, meant to be the village's pride, continues to be a magnet for low-level disorder. While "anti-social behaviour" can sometimes be a catch-all term for "young people existing in public," the reality in Lymm has shifted toward something more cynical with police being forced to impose a dispersal order notice, giving them the powers to move people on.

By day, the village is paralysed by the "official" disruption of roadworks; by night, it is unsettled by the "unofficial" disruption of a small minority. Both issues contribute to a sense that the village centre is losing its charm. Fixing this requires more than just filling in holes in the road. We need a policing presence that acknowledges Lymm isn't immune to the issues of larger towns, and we need utility companies to treat our village with more respect. Until the power cables are laid and the respect for our public spaces is restored, the "jewel" will remain sadly tarnished.

**Deadline for
July issue is June 2**



Tracey Turton

ARE YOU TIRED ALL THE TIME?

Post Viral Fatigue • Chronic Fatigue • Fibromyalgia

BOOK YOUR FREE 30 MINUTE DISCOVERY CALL to find out more about a pioneering new approach to recovering from these debilitating conditions

01925 730123 | www.traceyturton.co.uk

N & J STANHOPE

Coal and Log Supplies

Smokeless Fuel • Kiln-dried Logs

Hay and Straw

Caravan Storage

Fresh Bacon and Eggs

Open 6 Days. Closed Sunday

Broomeedge Farm

Burford Lane, Lymm WA13 0SE

**Tel: 01925 752830
Mobile: 07979 785 421**

FAMILY RUN BUSINESS

MAXIMISE YOUR SPACE WITH £600 OF FREE STORAGE

Exclusive to Dream Doors Warrington!
You won't find this offer anywhere else. Ends 30th June 2026

Terms and Conditions apply. Offer cannot be used in conjunction with any other promo

DREAM DOORS®
NEW LIFE FOR OLD KITCHENS



- › Up to 50% less than a new fully fitted kitchen
- › Replacement kitchen doors
- › Cost effective made to measure solution
- › Worktops and appliances
- › Quick installation in 2-3 days by local professionals

92 Knutsford Road,
Grappenhall,
Warrington, WA4 2PJ

Call us now for a free estimate:

01925 211308

Warrington@dreamdoors.co.uk

Facebook.com/DreamDoorsWarrington

@dreamdoorsnorthwest

pinterest.com/dreamdoors_northwest

Checkatrade.com **9.8/10**
Where reputation matters

MODERN	CLASSIC
TRADITIONAL	CONTEMPORARY

dreamdoors.co.uk



THE UK'S #1 KITCHEN MAKEOVER COMPANY

Lymm Floral Art Group members help arrange display at Westminster Abbey for Anzac Day service

FOUR members of Lymm Floral Art Group travelled to London to arrange flowers in Westminster Abbey for the Anzac Day service on April 25th, undeterred by a three-hour train delay and a tube strike.

Janet Schofield and Karen Clegg arranged three-metre-high pedestals at either side of the high altar, whilst Tracy-Anne Clancy and Pam Mosedale created all-around designs at either side of the choir.

The fabulous flowers were provided, and they managed to include some of their own garden plant material, carefully transported all the way from Lymm. The green and gold colour scheme represented Australia, including some kangaroo paw, a flower native to Australia. Ferns were included to represent New Zealand, along with some Phormium leaves, which originate from New Zealand.

ANZAC Day is the anniversary of the landings on the Gallipoli

Peninsula in Turkey by Allied forces on 25th April 1915. What followed was one of the bloodiest battles of the First World War, with heavy casualties sustained on both sides.

The service was attended by the Princess of Wales and the High Commissioners for Australia and New Zealand. Janet, Karen and partners were lucky enough to be seated in the VIP section directly opposite the dignitaries.

Lymm Floral Art Group meets at the village hall on the 3rd Monday of each month, and their 55th anniversary spectacular open demonstration will be at Statham Lodge on September 21st.

See Lymmfloral on Facebook and Instagram for more information.



Trusted care and support
in your own home

From **one-hour visits**
through to **24/7 live-in care**

Our services include:

- Companionship
- Personal care
- Meal preparation
- Light housekeeping
- Outings and appointments
- Live-in care
- Medication reminders
- Holiday and respite cover
- Specialist dementia care
- Help with washing & dressing

01925 202576 info@rahlymm.co.uk
www.rightathome.co.uk/lymm-and-warrington-south

Award-winning dementia friendly Care Home

Exceptional care & facilities - including sensory garden & full activities programme

Dementia Care • Residential Care • Respite • Daycare

www.keatehouse.com

Call: 01925 752091

Email: enquiries@keatehouse.com

9 Brookfield Road, Lymm, Cheshire WA13 0QL

What's On

LYMM PARISH COUNCIL
Next meeting Tuesday June 9th, 7:30pm
Lymm Parish Hall
Check www.lymmparishcouncil.gov.uk for details.

LYMM THURSDAY EVENING BRIDGE CLUB
Lymm Village Hall every Thursday 7pm
Details: 01925 919053

MAPLE LODGE ART GROUP
Meet each Wednesday 9.30am - 11.30pm
Oughtrington Community Centre, Lymm
Details: 01925 755926

ROTARY CLUB OF LYMM
Meets at Warburtons Parish Rooms on the 2nd and 4th Wednesday each month at 8pm
Contact 01925 919053

LOVING HEARTS & HANDS
Knitting for charity at Lymm Methodist Church, 2nd and 4th Thursday each month, 1.30pm - 3pm. Details: 01925 753298

LUNCH AT THE BROW
Eagle Brow Methodist Church
2nd Friday in the month
Light lunches 12 noon till 1.30pm.
All proceeds to The Y Project Room at The Inn

GARDENING CLUB
Meet Third Wednesday of the month
Lymm Baptist Church, Higher Lane. 7.30pm
Visitors welcome. £2 includes tea and cake

LYMM FLORAL ART GROUP
Lymm Village Hall
Third Monday of the month (except August and December) at 7.30pm. Visitors most welcome. Contact: 07876 176501
lymmfloralart.org.uk

LYMM PHOTOGRAPHIC SOCIETY
Every 2nd and 4th Wednesday (ex Aug), 7.30pm
Spread Eagle pub, Eagle Brow.
See our rolling display in Lymm Library
Details: www.lymmphotosoc.org.uk

LYMM HISTORY SOCIETY
Second Monday each month
September to May
Lymm Village Hall - 8pm-9pm
Variety of history talks
Visitors most welcome
www.lymmhistory.club

LYMM WINE AND BEER CIRCLE
3rd Wednesday of the month, 8pm
The Spread Eagle Hotel
Details: 01925 756444

LYMM CONCERT BAND
Rehearsals every Thursday evening
United Reformed Church, 8pm.
Details: 01925 752934

LYMM WI
Every second Wednesday, 2-4pm at Lymm Youth and Community Centre. Visitors welcome.

LYMM AND DISTRICT MIXED VOICE CHOIR
Every Wednesday 7.30 Lymm Methodist Church. Contact 01925 601664.
caih@cstones.co.uk

PROBUS CLUB OF LYMM
A small, friendly social club for retired men and women.
Meets on second and fourth Tuesdays at 2:15pm.
Details: www.LymmProbus.club

LYMM DINGLE PROBUS CLUB
A friendly busy social club for retired men. Meets on alternate Thursday afternoons at Lymm Baptist Church.
Details: www.lymmdingleprobus.club
Club secretary 01925 759995

FRIENDS OF LYMM LIBRARY CRAFT GROUP
Lymm Sanctuary Hub
Fridays 1.30-3.00pm
Details: 01925 754016

HEATLEY WI
Meets the second Thursday of each month at St Peters Church Hall, Sandy Ln, Lymm, 7pm
Visitors welcome. Details: 01925 752014

LYMM & THELWALL U3A
Speaker meeting 3rd Thursday of the month (excluding August & December) at Thelwall Parish Hall 10.00am. Prospective members welcome.
www.u3asites.org.uk/lymm-thelwall/home
Contact: enquiries@lymmthelwallu3a.org.uk

"A Ghoul's Night out!"

As part of the Lymm Festival in June, the Bridgewater Players Drama Society will be putting on a tantalising, supernatural comedy, written and directed by their chairperson and Lymm resident, Kath Buckley, 'A Ghoul's Night Out'.

It is about a group of friends who decide to visit a haunted house, as a bit of fun! But this is no regular night out, as they seemed to have summoned up a malevolent spirit, called Mal, which now keeps annoyingly, haunting them! So, who do they turned to for help? Madame Arcana; a psychic, who is desperate for more work! Luckily, Madge, the 'mother hen' of the group, has kept her card from a Psychic Event. But what Kerri, Fred, Charlie and Susan have suspected all along, it is in fact, Madge who is the key to the malignant spirit's demise!

This very funny, quick-witted comedy, includes everything you need for a great night out. It is loosely based on Noel Coward's 'Blithe Spirit', but is much more besides and written for the modern day. As with all of the Bridgewater Players shows, there is a mixture of a familiar cast, all from the previous productions this season. In addition, the society is pleased to welcome Jacque Hamilton, who is playing the part of Madame Arcana. Jacque has been in many shows at The Altrincham Garrick Playhouse, including playing the part of Clarissa Oddbody in their recent production of "It's a Wonderful Life".

Based in Thelwall, the society was initially formed by six people in November 1951 in Lymm and



this is their 75th anniversary year. To celebrate, this show forms part of the Lymm Festival 2026 event, with further details at www.lymmfestival.co.uk.

Kath Buckley explains, "We are delighted with and very thankful for the fantastic reaction we get from our audiences, as we can't do this without them! There are so many more productions planned for our '75th Anniversary Season' which starts in November, and we hope to continue to provide fun-packed, entertainment and a great night out!"

Show dates are Thursday 25th and Friday 26th June (two nights only), with curtains up at 7.45pm, prompt. Tickets for the show can be purchased online at www.bwplayers.co.uk/tickets or using the QR code below. Price is £9, plus booking fee online, and £10 on the door. Pre-booking is recommended as tickets are already selling. Performed at Thelwall Parish Hall, Bell Lane, WA4 2SX. Free parking is available. Please message with any disability requirements on bridgewaterplayers@gmail.com



CHESHIRE GOLD XCHANGE

SELL YOUR GOLD & SILVER TODAY!

ITEMS WE BUY:

- Jewellery
- Bullion
- Coins
- Silverware
- Pocket Watches
- Watches
- Asian Gold

VISIT US:

3 London Road
Stockton Heath
Warrington
WA4 6SG

SELL IN-STORE & ONLINE

01925 387 107

CHESHIREGOLDXCHANGE.CO.UK

BRIDGEWATER PLAYERS

A GHOUL'S NIGHT OUT

By Kath Buckley



THURSDAY 25TH & FRIDAY 26TH JUNE



QR code for tickets or
www.bwplayers.co.uk/tickets

Tickets £9 online (+ booking fee)
or £10 on the door

**At Thelwall Parish Hall
Bell Lane, WA4 2SX**

ESTHER MCVEY MP

Member of Parliament for Tatton

I hold regular constituency surgeries around the area.

To make an appointment please call **01625 529922** or email officeofesthermcveymp@parliament.uk

Promoted by Angela McPake on behalf of Esther McVey MP both of Windsor Court, 103 King Street, Knutsford, Cheshire WA16 6EQ. Funded through the allowances made available to the Member of Parliament.



G P BROADSMITH & SON

DELICIOUS MILK DELIVERED TO YOUR DOOR!



POOL FARM, LYMM

YOUR LOCAL DAIRY Est. 1932

Fresh, quality milk delivered to your doorstep.

A variety of local produce. Everyone at the farm would like to congratulate Gary and the team on 25 years of Lymm Life!

Early morning deliveries.

Call 757655 or email milk@broadsmith.com for our prices!

G P BROADSMITH & SON
POOL FARM, POOL LANE,
STATHAM, LYMM, WA13 9BW
TEL: 01925 757655





Lymm Eye Clinic

LYMM Historic Transport DAY



ADULT £7
CHILD £4
FAMILY £18



STEAM

BOATS

CARS

BICYCLES

CARRIAGES



PROCESSION STARTS
10.30AM

28TH JUNE

ON THE MAY QUEEN FIELD
& VENUES ACROSS LYMM

WWW.LYMMTRANSPORT.ORG.UK

STALLS, FOOD, DRINK, LIVE MUSIC & MORE!



Comedy legend to appear at Lymm Festival

LYMM Festival is back – this year from 18 to 28 June, as usual, the full programme comprises over 50 events, with something for everyone including a comedy legend.

Highlights this year include a return of outdoor theatre, which has been a popular part of the Festival in the past, with a family-friendly theatre production from Illyria. They will be performing "The Three Musketeers" at Cherry Tree School on Thursday 25 June.

The event also welcomes a comedy legend to Lymm. Ricky Tomlinson – star of 'Brookside' and 'The Royle Family' as well as films including 'Mike Bassett England Manager', comes to the Statham Lodge Hotel on Tuesday 23 June. His show, entitled "Retirement? My A*se!", will cover his humble upbringing, his time as a political activist, and of course his experiences as a household name.

Tickets for both of these events are already on sale ahead of the full Festival programme which will be announced in mid-May.

Other events to look out for include all forms of music – from folk, classical and jazz to rock and pop – and Festival favourite Gerald Dickens, great, great grandson of the legendary Charles, will be back to deliver another of his brilliant one-man shows.

As usual, the first event is the FoodFest which takes place on Thursday 18 June, when the village

will have stalls from local restaurants and traders, together with a variety of street entertainment.

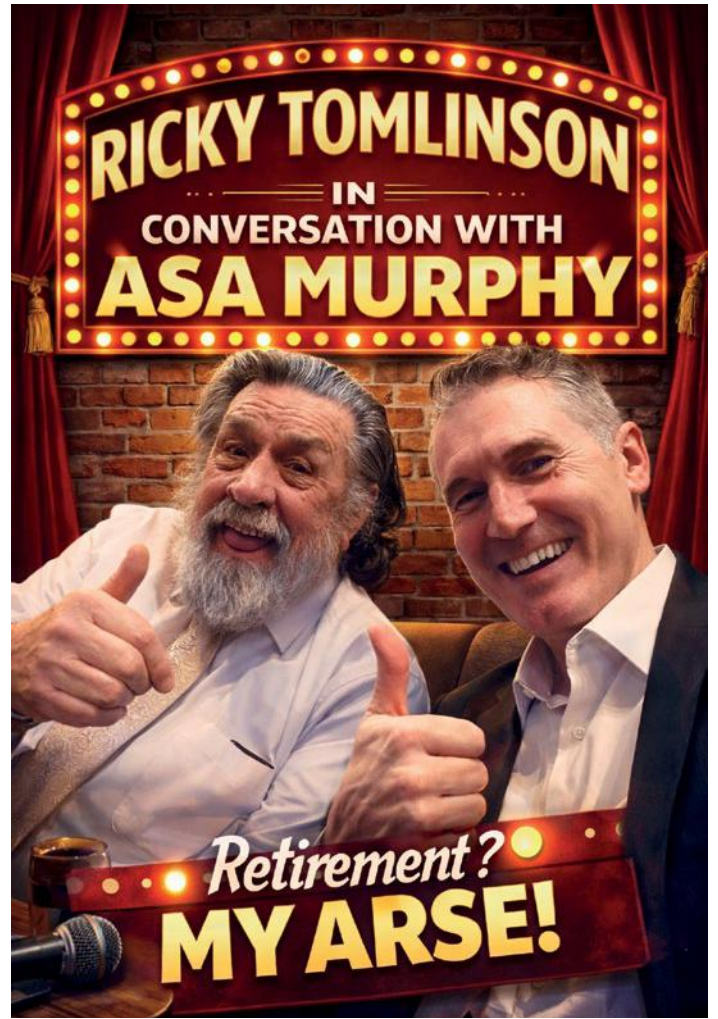
Lymm Historic Transport Day – will be on Sunday 28 June this year, with the usual amazing vehicle parade through the village, followed by a full day of exhibits and activities including canal boats and steam traction engines.

And there's some special visitors this year too including the Jeep from 'Jurassic Park', a flight simulator and Fred Dibnah's Land Rover!

For youngsters, Lymm Library will be running a programme of dinosaur-themed events and the regular Festival Family Fair will be on Saturday 20 June with a varied programme of activities and events.

And of course there is the Scarecrow Trail – themed this year on "Songs as Scarecrows". Lymm residents will be letting their imagination run wild as they turn well-known song titles into scarecrows.

Full event details are listed on the Festival website and in the guide which will be distributed throughout Lymm in mid-May. Many ticketed events sell out before they take place, too, so early booking is always recommended.



L
F
2
6

Lymm Festival

LYMM FESTIVAL 2026

18TH TO 28TH JUNE

FUN FOR ALL THE FAMILY | LYMMFESTIVAL.ORG.UK

**APPLY NOW FOR SEPTEMBER 2026 AND
GIVE YOUR CHILD THE BEST START!**



**FOREST
PREPARATORY
SCHOOL**

**Nursery and School
Places Available
from September 2026**

To Book A Tour

CALL 0161 980 4075

enquiries@forestschool.co.uk

www.forestschool.co.uk



Small Class Sizes (1:12 ratio)

Affordable Monthly Payments

Outstanding 11+ Results

ISI Inspection 'All Standards Met'

Traffic chaos – “It’s Awful” – Lymm residents speak out over SP Energy Networks roadworks

LYMM village is facing ongoing severe traffic disruption as SP Energy Networks continues its major underground electricity cable reinforcement project.

Residents have been reporting long delays, chaotic diversions, and growing safety concerns on residential streets, with the works now expected to run until August 2026.

Cllr Graham Gowland, Borough Councillor for Lymm South, said the impact on daily life had become unacceptable.

One resident described the situation bluntly: “It’s awful! I’m having to leave 30 minutes earlier for work and I really don’t have 30 minutes when I am up at 6 anyway! The diversions are ridiculous and too far out. I’m having to drive to outside of Lymm to go back around again on myself to get to Stockton Heath.” — Karen Rachel

Another resident on Sandy Lane appealed for witnesses after her parked car was hit for the second time in three days: “Since these roadworks have started, we’ve had tractors, lorries and so many cars coming up the road every single day... this is the second time in three days that our car has been hit and we don’t have anywhere else to park it.” — Kate Parkes

Local resident Andy Openshaw raised serious concerns about overlapping road closures: “Are they going to go ahead closing Rushgreen and Sandy Lane in parallel? That would be... Interesting based on issues to date.”

He added: “It puts all traffic crossing the canal through the Mill Lane / Burford Lane lights, increasing queues for more of the day, and one high vehicle or accident blocks everything. It’ll likely be quicker to use the official 45-minute diversion than queue in Lymm. Still looks like 20-30 mins queue at Burford Lane at 18:45 this evening.” — Andy Openshaw

Other residents have also voiced their concerns: “People taking short cuts down Wet Gate Lane doing high speeds on single track lanes, currently very dangerous.” — Bridget Hogg.

“Workers have gone through a gas main between Dunham lights and Dunham Massey.” — James Hurrell.

“Not wanting to add insult to injury but there’s water seeping out of the recently dug up road opposite Woodlands Avenue. I’ve reported it.” — Richard Storey

Cllr Gowland said: “These are real people trying to get to work, school, appointments and caring responsibilities. The road network in Lymm has very little spare capacity, and when key routes

are closed for weeks, the knock-on effects spread quickly across the village. While the long-term upgrade to our electricity supply is necessary, residents are rightly frustrated by the current level of disruption, poor sequencing and inadequate mitigation.”

Many residents who have already emailed the council and SP Energy Networks report receiving dismissive or copy-and-paste replies. Despite this, Cllr Gowland is strongly urging everyone affected to continue submitting their experiences.

“Volume matters. The only way the council and SPEN can fully understand the scale of the impact is if residents keep reporting what they are actually going through. Real examples, with dates, times, photos and specific locations, help build the evidence needed for better planning and stronger

mitigation measures.”

Residents are asked to email their experiences to both addresses below:

Warrington Borough Council: contact@warrington.gov.uk
SP Energy Networks (Lymm Reinforcement): lymmreinforcement@spenquiries.co.uk

Cllr Gowland has already raised a formal question at Full Council about improving coordination between utilities and whether stronger measures, such as lane rental schemes, should be considered.

“Essential infrastructure work must happen, but it should not grind residents’ daily lives to a halt month after month. I will keep pressing for a more resident-focused approach as this project continues,” he added.



xeinadin

Helping you grow.

Your local accountants and business advisors in Warrington.

Are you looking for progressive accountancy, business and tax advice?

Get in touch with one of our experts

01925 761 600

warrington@xeinadin.com

www.xeinadin.com/warrington

FORWARD THINKERS. TRUSTED ADVISORS.

Lymm Eye Clinic

Local, professional eyecare when you need it

A comfortable, friendly environment where all aspects of ophthalmology can be diagnosed and advised upon with the most up-to-date imaging equipment available.

No referral necessary, book your appointment online

www.lymmeyeclinik.co.uk

Tel: 07498 456312 | 16A The Cross, Lymm, WA13 9RR

MP calls on Government to cut commission fee park homeowners are forced to pay

MP Esther McVey has called on government to cut the commission park homeowners are forced to pay when selling their properties.

Commission is currently capped at 10 per cent but residents argue the costs are unfair.

Ms McVey said: "Talking to my park homeowners, they tell me they feel financially trapped should they wish or need to sell their home. They also rightly point out that they already pay site fees so they believe this extra cost is unjust."

Site owners say the money funds repairs and investment into the parks and is needed.

Previously, it has been said that the commission paid by residents when they sell is similar to stamp duty.

But Ms McVey pointed out stamp duty is paid when buying a house, not selling, and 10 per cent of sales is a "huge amount of money to lose".

A government consultation is currently underway looking at the rationale for the commission, whether the need has changed over the years, as well as what goods and services are paid for (with it) and how the money enables site owners to meet their obligations effectively and efficiently.

The Tatton MP, who represents

the Lymm area of Warrington, said: "This cannot be a one-sided consultation; residents must be heard. I urge all my park homeowners to respond so we can show the strength of feeling over this issue. So far just 400 residents of the 160,000 living in park homes up and down the country have responded."

In the debate Ms McVey pushed Housing Minister Matthew Pennycook to commit to a timeframe. She was given assurances a decision on commission would be made by the end of the year.

Ms McVey said: "Back in 2022, I presented a petition in Parliament calling for annual pitch fee increases for park homes to be linked to consumer price inflation rather than retail price inflation, which the then Conservative government enacted. Now we need action over the 10 per cent commission."

The consultation closes on May 29 and people can have their say by visiting www.gov.uk/government/calls-for-evidence/park-homes-reasons-for-commission-payments



Need IT Support at Home?

- Skilled and Friendly Technicians
- PC and Laptop Support
- Home Visit or Remote Dial-in
- Antivirus/Malware Check
- Unlimited Support Time
- Equipment Supplied: Laptops, PCs, Printers & Bespoke Builds



Call our Team: 01925 251143
sales@aspire-computers.com | www.aspire-computers.com



- Mobility products, sales, serving & repairs
- Rise/recline & fireside chairs
- Adjustment beds & stairs-lifts
- 3 & 4 Wheel walkers
- Bathing, kitchen & continence products
- Free no obligation assessments in-store or in your home
- Pre-owned equipment available



Centre for Independent Living

Beaufort Street, Warrington WA5 1BA T: 01925 240064

Mobility & Independent Living

Lifeforce, Summers Road, Liverpool T: 0151 7090121

Mobility & Independent Living Store

30 Sankey Street, Warrington WA1 1TD T: 01925 416624

Mobility & Independent Living Store

Unit 6, Dewhurst Road Birchwood WA3 7PG T: 01925 251079

www.disabilitytradingcompany.co.uk



High-Quality Family Dentistry at Honest Prices

Welcome to the team Dr Vicky Rees

Now taking new clients after winning a lengthy planning battle for a new fully accessible downstairs surgery after 20 successful years!

Independent private practice

Private dentistry at NHS prices
 Children up to 16 seen free of charge (conditions apply)

Easy parking/groundfloor easy access including wheelchair

State of the art equipment highest standards of cleanliness and cross infection control

Emergencies seen same day no waiting lists

Dr Andrew Brown and associates welcome new patients

BDA Good Practice Member



01925 210977 info@grappenhalldental.com
 01925 481341 www.grappenhalldental.com
 148 Knutsford Rd, Grappenhall, Warrington WA4 2PW

Local care home recognised as one of the best in the North West



A CARE home in Lymm has been recognised as one of the best in the North West, following positive feedback from residents and their families.

Keate House Residential Home has been named a Top 20 Care Home in the North West by carehome.co.uk, a leading website for finding and choosing a care home. The award places Keate House Residential Home among the top-rated homes out of more than 1,784 care homes across the region.

The accolade is based entirely on independent reviews written by residents, along with their friends and relatives, highlighting the quality of care, support and overall

experience provided at the care home.

carehome.co.uk helps families understand their care home options, explore what is available locally, build a shortlist and arrange viewings with homes that best match their individual needs.

It lists all registered care homes in the UK and provides verified reviews, inspection ratings and transparent fee information. It also operates a free expert care helpline to support people searching for care.

There are nearly 17,000 care homes across the UK, caring for around half a million people.

Almost one in five people are now aged 65 or over and nearly one in 10 people are aged 75 and over. This figure is expected to rise significantly over the coming decades and demand for high-quality care will continue to grow.

These awards, based on real reviews, help families feel more confident and informed when choosing a care home.

To search for care homes in Lymm go to: www.carehome.co.uk/care_search_results.cfm/searchtown/Lymm

Amanda Hopkins, reviews manager at carehome.co.uk, said: "We would like to congratulate Keate House Residential Home on being named a Top 20 care home in the North West. It is a fantastic achievement and a real testament to the standard of care they provide."

"With more than 400,000 reviews of care homes now available on carehome.co.uk, we're able to give families a genuine insight into the quality of care, facilities and support offered by thousands of care homes across the UK.

"Looking for a care home for a loved one can be incredibly time-consuming and emotionally

draining. You're not just choosing a building – you're choosing a home where your mum, dad or loved one will live, be cared for and feel safe, and it can feel like a huge responsibility.

"That's why independent reviews from people who have first-hand experience are so important. We hope our Top 20 awards, based on feedback from residents and their families, help reassure people and provide trusted guidance and support at a time when they really need it."

Ryan Lees, deputy manager of Keate House Residential Home, said: "We are extremely proud to receive the carehome.co.uk top 20 award for the 4th year in a row. It really goes to show all the hard work, love and dedication each and every staff member and volunteer puts in to Keate House. We would also like to thank all of our lovely families, friends and residents for the kind comments that have made this award possible."

To read reviews of Keate House Residential Home, visit: www.carehome.co.uk/carehome.cfm/searchazref/10003523KEAA

The full list of Top 20 Care Home Award winners can be found at: carehome.co.uk/2026-Top-20-Care-Home-Awards



Pre-bookable parking available for Lymm Historic Transport Day

ONE big change at this year's Lymm Historic Transport Day, when it returns on Sunday, June 28th, is the introduction of pre-payable parking, which includes a ticket to the event.

As usual, the May Queen Field will come alive with horse-drawn carriages, bicycles, and a fabulous display of classic cars.

Maple Lodge will be packed to the rafters with epic Lego displays, while the Village Hall will be showcasing stunning model railways and a contingent of steam engines will be on Henry St Car

Park overlooking dozens of old working boats on the canal. This year there'll also be a vintage scalextric course, a cutting-edge flight simulator and Fred Dibnah's iconic Land Rover, amongst many other attractions. With vehicles and attractions coming from all over the country, it's set to be a day not to be missed!

Jack Levy, who helps organise the event, said: "One big change to this year's event has been the parking. Previously, the field on Crouchley Lane has been made generously available to the event by the

landowner, but this year, Transport Day is unable to use that land, and the organisers are therefore asking visitors not to park there.

"Lymm High School has very kindly offered alternative parking but as the number of spaces at their site is limited, any drivers wishing to park there must reserve a spot in advance, which can be done when purchasing a ticket online.

"We're asking drivers who wish to park to reserve a spot in advance, which can be done when purchasing a ticket online.

The ability to buy online – and

reserve a parking space – is also a first for the event and can be done via the website, www.lymmtransport.org.uk

Another advantage to purchasing online is a slightly cheaper price of £6.50 per ticket as opposed to £7 when buying on the gate. A child's ticket costs £3 online, the same as last year, and will be £4 on the gate. A family ticket online is £16 and £18 on the gate. As ever, all the profits raised are donated to local charities and causes.

For more details visit www.lymmtransport.org.uk/

FAMILY RUN BUSINESS • ESTABLISHED IN 1998

The **M6** Bed Warehouse

CHESHIRE'S AWARD WINNING BED SPECIALIST



Winner

*Small NBF Retail
Champion of the Year*



ALSAGER STORE

RADWAY GREEN BUSINESS PARK - CW2 5PR



NORTHWICH STORE

WINNINGTON BUSINESS PARK - CW8 4DL

Expert Advice • Free Delivery & Free Disposal • Instore & Online

Tel: **01270 879379** • **www.m6beds.co.uk**

115-120 The Courtyard, Radway Green Business Park, Alsager, Cheshire, CW2 5PR

Winnington Business Park, Winnington, Northwich, CW8 4DL

Summer skincare: protecting your skin during the warmer months

By Dr Paul Ivey, Dermatology Specialist at myGP Clinic

As the weather improves and we spend more time outdoors, summer is a good opportunity to enjoy the benefits of sunshine, exercise and fresh air. However, it is also one of the times of year when our skin is placed under the greatest stress.

Every summer, GPs and dermatology clinics see a rise in problems linked to sun exposure, dehydration, heat, insect bites and worsening of chronic skin conditions. The good news is that many of these issues are preventable with relatively simple skincare habits.

One of the biggest misconceptions I still encounter is that sun protection is mainly about preventing ageing or maintaining appearance. In reality, protecting your skin from ultraviolet (UV) damage is primarily about long-term health.

Even in the UK, UV levels during spring and summer can be surprisingly high. Repeated exposure contributes to premature skin ageing, pigmentation changes and, more importantly, increases the risk of skin cancer.

Melanoma, the most serious form of skin cancer, continues to rise in the UK. While fairer skin types are generally at higher risk, skin cancer can affect anyone.

A few simple measures can significantly reduce risk:

- Use SPF 30 or higher sunscreen daily during sunny weather

- Reapply sunscreen every two hours if outdoors for prolonged periods
- Reapply after swimming or sweating
- Wear hats and sunglasses where possible
- Avoid prolonged direct sun exposure during the middle of the day

Importantly, sunscreen should not only be reserved for holidays abroad. Many people underestimate how much cumulative sun exposure they receive simply through walking, driving, gardening or sitting outside in the UK.

Hot weather can also lead to dehydration, which often shows itself in the skin first. Dryness, irritation and sensitivity tend to worsen during warmer months, particularly in people who already suffer from eczema or sensitive skin.

Drinking adequate water is important, but so is maintaining the skin barrier itself. Lightweight moisturisers can still be beneficial during summer, even for those with oily skin.

Air conditioning, swimming pools and increased showering can all strip natural oils from the skin, leading to

irritation if skincare routines become too harsh.

Summer often brings a surge in social media skincare trends, but more products do not necessarily mean healthier skin.

Over-exfoliation is particularly common during warmer months. Excessive use of scrubs, acids or retinol products alongside increased sun exposure can damage the skin barrier and increase sensitivity.

A simple, consistent routine is often best:

- Gentle cleanser
- Moisturiser suited to your skin type
- Daily sunscreen

For many people, this is more effective than using multiple aggressive products simultaneously.

Sweating, heat and sunscreen use can contribute to acne flare-ups, particularly in teenagers and young adults.

However, it is important not to avoid sunscreen altogether due to acne concerns. Modern non-comedogenic sunscreens are designed not to block pores and are usually far safer for the skin than repeated UV damage.

If acne becomes persistent or severe, medical treatments are available and can make a substantial difference both physically and psychologically.

Summer is also a good time to



become more familiar with your skin.

Any mole or lesion that changes in size, shape, colour or appearance should be assessed by a healthcare professional. Warning signs include:

- Irregular borders
- Multiple colours
- Bleeding or crusting
- Persistent itching
- Rapid growth

Most skin lesions are harmless, but early assessment is always worthwhile.

Good skincare is rarely about expensive products or complicated routines. In most cases, the biggest long-term benefits come from consistency — protecting skin from excessive sun exposure, maintaining hydration, and recognising when something does not look right.

As we move into the summer months, taking a few simple precautions now can help avoid both short-term skin problems and more significant issues later in life.

New MRI at Antrobus Clinic

myGP
CLINIC

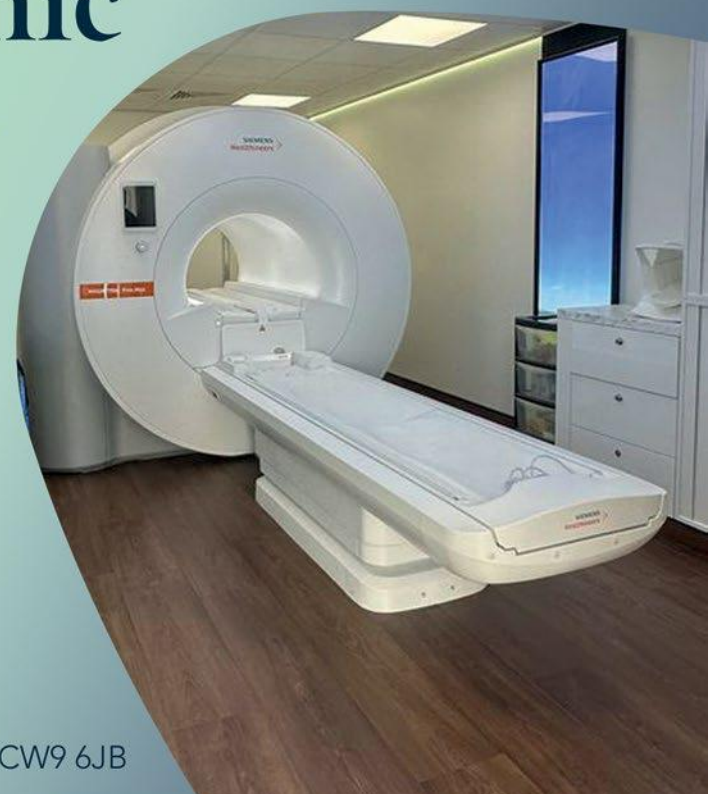
Personalised Healthcare with a dedicated GP

- ✓ Dedicated local GP
- ✓ Guaranteed same-day appointments
- ✓ Kids go free
- ✓ No waiting times
- ✓ 30-minute appointments
- ✓ On-call Concierge team
- ✓ Annual health screening

Book your free consultation today
www.mygpclinic.co.uk

01925 972 673

Thellow Heath Park, Northwich Road, Antrobus, CW9 6JB



Drivers voice fury over Warburton Toll Bridge fines and soaring costs



BRIDGE users gathered to protest at the level of fines being issued to people who had used the Warburton Toll Bridge – especially those who say they had done everything possible to pay the toll.

Motorists are increasingly angry after receiving penalty notices weeks or even months after crossing. Many claim the new cashless system is confusing and poorly enforced.

The bridge now runs a cashless system where drivers must pay £1 (motorcycles free) by midnight the following day, unless they have an automatic account set up. Official signs state the charge applies “beyond this point” under the Rixton & Warburton Bridge Byelaws 2024, with warnings that failure to pay may result in further liability, but with no actual website or phone number given.

However, lots of users say they had no idea payments had failed until multiple fines started arriving.

Rachel Alexander, a regular commuter from Lancashire to Altrincham, said she has already paid five fines but keeps receiving more.

“I’ve paid five already, yet the fines just kept coming. It made me realise something was seriously wrong with the system. It feels like a complete mess – they’re relying on technology that clearly isn’t working properly.”

Rachel added: “It’s really upsetting getting these envelopes through the door all the time. I’ve got a long commute to work, and now I’m facing £166 in penalties on top of everything. I’ve basically paid twice over. It’s just not fair.”

Tom Shanks, a local resident, questioned both the level of the toll and Peel Holdings’ record on maintaining the bridge and surrounding roads.

“They bought the canal, the bridges and the roads, and they were meant to look after them properly, but this stretch was left full of potholes for years,” he said. “They’ve finally resurfaced it and it’s much better, but that should have been done ten or twenty years ago. Now they’ve hiked the charge instead.”

Tom continued: “They should scrap the charge. They’ve had decades to maintain this road properly and didn’t bother. It’s completely wrong.”

Brenda Williams, admin of

the Warburton Toll Bridge Action Group, highlighted the strain on regular users, especially families and elderly residents.

“There’s an elderly lady living on one side whose 90-something mum lives on the other. She crosses three times a day just to take her meals,” she said. “It only used to cost 25p – now it’s outrageous.”

She added: “Even the new £1 toll is too much for people on low wages. That works out at £10 a week for anyone crossing five times. That’s money that could put food on the table for their kids. And now fines from December and January are still turning up in May.”

Councillor Graham Gowland, who joined around two dozen protesters at the bridge on Bank Holiday Monday morning, said the fines have made an already unpopular toll even more resented.

“People were already unhappy about the new toll, but the way Peel has handled enforcement has left them furious,” he said. “It’s not about people refusing to pay – it’s that the system is hard to get to grips with.”

Cllr Gowland noted that many users who previously crossed for free when the toll booth was unmanned are now forgetting to pay online because there is no barrier. Frequent daily users have also been caught out, including some who had set up accounts that later developed problems, and even exempt users who should never have been charged.

The Warburton Toll Bridge is a key link between Cheshire and Greater Manchester. Frustration over both the charges and the payment system continues to grow among local commuters.

A spokesperson for the Manchester Ship Canal Company said: “This is a significant modernisation of the bridge operation and an adjustment for users.”

“The approach we are taking on enforcement is proportionate and fair as it balances the responsibility we have to drivers who have paid the tolls, or those who have only had minor missed payments.”

Chambers Fletcher Solicitors

Divorce Column

By Peter Wilkinson
Divorce Lawyer at Chambers Fletcher Solicitors

Divorce and Social Media – Think Before You Post

For many people, social media has become part of everyday life. We share photographs, post comments and communicate instantly – sometimes perhaps without giving it much thought.

The difficulty is that during family law disputes our social media activity can end up being used as evidence in the dispute.

It is increasingly common for material obtained from Facebook, Instagram, TikTok, WhatsApp or other online platforms, even dating apps, to feature in family law cases.

Beware, your online activity may reveal more about yourself than you realise. And it may be used against you. Your online activity may provide a useful insight into matters such as lifestyle, expenditure, relationships, parenting or behaviour which may be relevant to the case.

In financial disputes, photographs of holidays, luxury purchases, frequent social activities, may sit uneasily alongside declared finances or assertions of financial struggles. In children matters, photographs and messages may become relevant where they touch upon parenting, parental conflict, new relationships or child welfare concerns.

People often post emotionally and impulsively. Sometimes posts can look very different at a later date when presented in evidence. Anything shared online should be treated as a public record and deleting posts can give a false sense of security because posts can be easily copied, screenshot and saved.

There is also a misconception that ‘private’ messages are always private. Sometimes they’re not. Whilst there are important legal limits regarding access to another person’s online account or devices, parties are often surprised by how much ‘private’ material can find its way into proceedings.

Always the safest approach is to pause, take a step back and consider how a post might be interpreted when scrutinised within court proceedings. Ask yourself, would I be comfortable explaining this in court if I had to – and assume that you might have to.

For expert advice and assistance regarding divorce, financial matters or child arrangements please get in touch. Whatever your family law situation, we can help.

Family Law & Divorce Residential Property Commercial Property Wills, Trusts & Probate



Peter Wilkinson



Stephen Worrall

01925 359005
www.chambersfletcher.co.uk

Cambridge House, Suite 4, 16 Walton Road,
Stockton Heath, Warrington, WA4 6NL

Any Questions? broadcasts live from Lymm for first time in 50 years!

LYMM High School was thrilled to welcome the BBC to broadcast Any Questions? live from their newly refurbished Main Hall.

Any Questions? is a Radio 4 political debate programme, which airs on a Friday evening from various locations around the UK. It features a panel of guests and a presenter – currently Alex Forsyth. The panel was Richard Fuller MP, James Murray MP, Hannah Spencer MP and journalist Poppy Coburn. Tickets were free, and around 200 guests attended.

The school was a hive of activity in the run up to the show.

The panel was announced the day before the broadcast and three security guards were provided to ensure their safety. A police presence was also on site.

Meanwhile, Sixth Form students greeted the attendees as they queued to show their tickets and undergo security checks.

Bags were searched and metal detector wands were used on all attendees. Next was the opportunity to get your questions to the panel!

Headteacher Gwyn Williams then welcomed the audience to Lymm High and spoke about the importance of young minds being exposed to, and taking an interest in, politics. He also divulged how he himself had asked a question to the panel of Any Questions? as a Sixth Former when the show visited his school.

The live broadcast began after the pips and the 8 o'clock news. The panel discussed mobile phone use in schools, the assisted dying bill, opportunities for young people, and whether the King should build bridges with Donald Trump or be more like Pope Leo. If anyone would like to listen to the show, they can access it on BBC Sounds.

Apparently, it had been 50 years since Any Questions? was broadcast from Lymm. It's very much hoped it won't be that long before another visit as it was a thoroughly enjoyable experience for all involved.



Afternoon tea - at the WI

SPEAKERS at the monthly meeting of Heatley WI were Gill Biggs and Lynda Kitalifa, with an interesting talk on the history of "Afternoon tea."

The talk included a cookery demonstration for making scones – and afterwards members enjoyed homemade scones, jam and cream which they had kindly provided.

President Eileen Woods, presented a bouquet of flowers to Gladys Taylor who was celebrating her 104th birthday that week.



#DAD2026

Disability Awareness Day

Sunday 12th July 2026 ■ 10am - 4.30pm ■ Walton Gardens ■ Warrington ■ WA4 6SN

Promoting Independence Throughout Life & Work

- 100's of Support Groups & Services
- Equipment & Vehicle Suppliers
- Performing & Visual Arts
- Main Arena
- Sports Zone
- Family Entertainment



Scan to visit our website



Principal Sponsor



01925 240064 www.disabilityawarenessday.org.uk

Student stars on the big screen



LYMM High School student Ollie Malpass has premiered on the big screen.

The Year 7 student is playing the lead in a short film called *Big Ol Boots*.

The story is about a young boy called Billy whose parents have divorced and who is being bullied at school. The film is about how Billy navigates his parents' separation and his bullies, and explores the different ideas of what masculinity is. Billy feels that he needs to be the 'man of the house' after his father's departure and stands up to his bullies after being targeted for being different.

He also escapes reality by

pretending he's a cowboy and his school bully plays the baddie in a dream sequence.

The film is being edited at present and will move onto film festivals after its premiere in Manchester.

Since filming ended, Ollie has secured a job as a young presenter on an educational series, which will be shown in Catholic schools across the UK. The show deals with how children navigate changes from the ages of 10-12, such as moving from primary to secondary school. Shooting started in May. Exciting times ahead, Ollie!

Netballers make National Finals



LYMM High School students Freya Inskip and Freya Loxham played in the ENG National finals in Essex.

The girls play for ANC All Stars and took part in the ENG Northern finals in Manchester over Christmas. As they finished in the top 4 teams from the North they qualified for the National finals where they met the top 4 teams from the East, West and South.

Out of the 16 teams competing, The Year 7 students' team came 6th, which was a huge achievement for a small village club.

"They were pretty much the smallest club there", said mum

Vicki. "Everyone was very proud of them."

They really made a name for themselves, and even beat the top seeds to get a place in the quarter finals. Freya Inskip scored a super shot (from 16 feet away from the post) to gain 2 points and take the win 5:4!

This was a fantastic accomplishment for the girls, who gained so much from the experience.

"What an amazing achievement. Congratulations!", said Head of Year 7, Miss Taylor.

CLASSIFIED Call 01925 631592 to advertise

ACCOUNTANCY & BOOKKEEPING

BOOKKEEPER/ACCOUNTANT. Licensed for maintaining financial records, VAT Returns, Payroll Service, Management Accounts, SAGE Software Consultancy. **Contact: 07815 617914.** (6/1)

CARPET CLEANING

A1 STAINBUSTERS. A Warrington company cleaning carpets, hard floors, Upholstery (Leather + fabric) and curtains in situ. FREE quotes for domestic and commercial. Approved carpet cleaners for Hancock and Woods for over 10 years. **Call John on 07765 314080** (8/25)

SIMPLY THE BEST CARPET CLEAN YOU will ever have. Cleaners UK Ltd. Est over 35yrs. Have your carpets & sofas beautifully deep cleaned leaving them fresh smelling & colour restored. Latest & best methods. Dry/steam. Leather cleaning, oriental rug specialist. Professional, reliable & affordable. **For more info call Neil Riley on 01925 264989 / 07831 336060 www.cleaners-uk.net** (5/25)

GARDENING SERVICES

All aspects of tree surgery
Stump grinding
Waste removal
Locally based
Free quotation

Beechwood Industries
www.beechwoodindustries.co.uk
01925 860544 (6/1)

CLEANING SERVICES

arleys angels

- Spring Clean Specialists
- Presenting your home for sale
- Moving house
- After building work cleans

01925 266834
... because you're worth it! (6/1)

SIMPLY THE BEST CARPET CLEAN YOU will ever have. Cleaners UK Ltd. Est over 35yrs. Have your carpets & sofas beautifully deep cleaned leaving them fresh smelling & colour restored. Latest & best methods. Dry/steam. Leather cleaning, oriental rugs specialist. Professional, reliable & affordable. **For more info call Neil Riley on 01925 264989 / 07831 336060 www.cleaners-uk.net** (5/25)

TAXI / PRIVATE HIRE

Horn's
Airport Transfer & Taxi Specialists
CALL MARTYN: 01925 751761
MOBILE: 07881 786250 (6/26)

TYRES

EVERGREEN Centre of Excellence
Express
Mobile Tyres
Local Family Business. Est 1997
01925 810000
www.expresstyres.co.uk
Order Online Today!
Branded & Budget Tyres
Cars, Vans, 4x4's, Caravans
Light Commercial & Performance Vehicles
The tyre service that comes to you at home or your place of work
No Call Out Charge!
BRIDGESTONE MICHELIN
GOODYEAR Continental (6/1)

PAINTING & DECORATING

PRIME COATS
Painting and Decorating Service
Interior. Exterior. Residential
Commercial. Industrial
Contact us for a free quote
Covering Warrington and surrounding areas
Mob: 07366 163818 **nextdoor**
Email: liam.primecoats@gmail.com

PAYROLL

WHY TRY TO BE A PAYE EXPERT? Watkinson Black can provide a cost effective payroll service, releasing you to concentrate on your business. **For further details please phone: 01925 413210 or e-mail: info@warringtonaccountants.co.uk** (6/1)

RE-UPHOLSTERY

Orchard Soft Furnishings
RE-UPHOLSTERY
CURTAINS • BLINDS
FREE MEASURING & FITTING
TEL: (01925) 756388
www.orchardsoftfurnishings.co.uk (6/1)

John Burrows & Sons
Fourth Generation Independent Family
FUNERAL DIRECTORS
Established 1878
FRIENDLY AND PROFESSIONAL SERVICE ~ DAY OR NIGHT ~ J. TANDY
The Old Smithy, Mill Lane, Lymm, WA13 9SE
Please telephone **01925 752501**
www.johnburrowsandsons.co.uk

To advertise in the classified section from as little as £15+vat Call us now on 01925 631592

The North West's leading supplier of concrete

www.barrowmixconcrete.com

BARROW - MIX

EST
1984



FREE SITE SURVEY

6 DAY SERVICE

All areas covered

Free barrowing service

Only pay for what you lay

From half a cubic metre upwards

Levelling/laying service if required

(minimum charge)

We can supply

C25, C30, C35 Fibre Reinforced



VISA

MasterCard

Maestro

SOLO

Call NOW for a FREE quotation

01565 734111 or 01942 722629