

# Winchelsea Star

Price \$1

Your Weekly Community Newspaper

Since 1977

Vol 47 Ed 36

Tuesday 17 September 2024

winchelseastar.org.au

## Happy 90th Birthday Reg Stevens Winchelsea Fire Brigade



This weekend Winchelsea Fire Brigade celebrated the 90th birthday of our esteemed member, Reg Stevens, who continues to serve as our Communications Officer and plays a crucial role within our Bbrigade.


Reg continues to conduct radio checks on all Winchelsea groups' radios every Sunday from

his home, and we are grateful for his dedication. We also express our gratitude to all our members who attended the celebration.

Thank you to Nicole's Magical Cakes for the incredible cake and to Blair Dellelijn for capturing our photos.

**SURF COAST SHIRE**  
WINCHELSEA WARD

**CONTACT ME**  
www.linktr.ee/joelgrist



**BACK TO BASICS**



**VOTE 1**

**Joel GRIST**

Authorised by J. Grist, PO Box 191 TORQUAY VIC 3228



**Casuarina Counselling Therapy**  
*Time For You*

Counselling to help find clarity, understanding and new ways forward for relief from distress of all kinds, including anxiety, depression, addiction, relationship issues.

**Call 0493 988 150 to book appointment**  
Available at The Exchange,  
32-34 Main Rd, Winchelsea

**WANT TO JOIN PROBUS?**

Enjoy fellowship with other members

Enjoy trips & outings

Listen to guest speakers



**Contact Lorraine**  
**0417 467 927**

**VOTE TONY PHELPS**  
for  
**Winchelsea Ward**

**Focus on what matters**



- \* Faster road maintenance
- \* Community asset upkeep
- \* Community mental health
- \* Sustainable budget

**tonyphelps.com**

Authorised by Tony Phelps, 40 Dicksons Rd, Winchelsea

**Scott McDonald**  
**0423 413 829**



**S.J.R AUTOMOTIVE**  
ABN 942 493 646 39  
13 ALSOP DRIVE, WINCHELSEA VIC 3241

**COUNCIL ELECTIONS 2024**

Our community needs a trusted, experienced, strong, local representative who understands what is important to our area, that's why I'm asking for your support to continue to serve as your local Councillor.

I was born, raised and still live in this community. I understand the needs of our area and what we want for the future.

**Cr Adrian Schonfelder**  
Councillor



Authorised by Cr Adrian Schonfelder, 230 Andersons Road Barmahol Victoria 3221



**Cr William Anderson,**  
Adrian's great-grandfather



**Adrian**  
(with 'Magic', his pony)  
is a former member  
of Barwon Valley  
Pony Club

**0404 330 156 aschonfelder@me.com**

**www.adrianschonfelder.com**





# The importance of visitors to Winchelsea

## Judy Cameron

I met Lee coming back to the car after walking her dogs Lily and Poppy along the river. I asked if she was a local. No she said John and I are from Geelong we come here at least once a month. We walk the dogs, go for a coffee and snack at La Hoot and then stop off at the Bakery for a cake.

"We love Winchelsea, it is peaceful and serene", said Lee. "Laid back" added John.

They own a caravan and enjoy free-camping with friends. They would use the Winchelsea site but it doesn't have facilities for camp fires. They go to Harrow every summer with a group where there are properly constructed open fire facilities, including for BBQs. John pointed out they bring hundreds of dollars to the town through eating at the local pub and buying coffees and food daily in the local businesses when there. They often go to Forrest too and stop off at Maguire's Butcher Shop on their way to buy their meat.

Lee said she loved the feel of Winchelsea shopping precinct. She and John often sit there and enjoy the view down to the river and take time to read the names on the War Memorial

*From the Surf Coast Shire website:*

## Winchelsea Memorial Cairns

The Winchelsea Cairns War Memorial honours all 100 of Australia's Victoria Cross recipients alongside service personnel from Winchelsea and District.

The memorial includes three glass pyramid cairns, with each cairn dedicated to several military conflicts:

- WWI 1914-1918 (cairn 1)
- WWII 1939-1945 (cairn 2 and 3)
- The Boer war 1899-1902 (cairn 3)
- The Korean War 1950 – 1953 (cairn 3)
- The Malayan Emergency 1950-1960 (cairn 3)
- The Vietnam war 1965-1973 (cairn 3)

This area has a strong history of military service; in 1914 Winchelsea's population was just 450 yet a staggering 230 local people served in WWI. The average age of servicemen and women was just 22 years old.

Visit the cairns on the Gulidjan side of the Barwon River in Main St.



# Join us. *A role for everyone*



Nationally accredited training to help our community.  
Pop in to meet your crew **Wednesdays 7:30pm**

**Winchelsea Unit**

325 Mousley Drive

**132 500**



## CELEBRATE POSITIVE AGING MONTH

Enjoy this feel good movie  
and delightful afternoon tea .

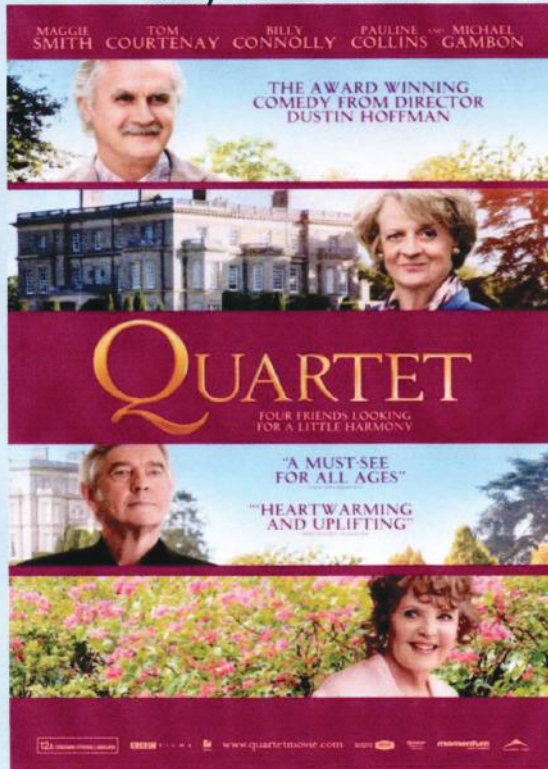
Admission - Gold coin

Thursday , October 3rd , 1.30pm-5 pm

Shire Hall Winchelsea

Bookings: Jenny 0409 672054

Everyone welcome.



## Winchelsea Community Foodbank

Fridays, 12 - 2PM  
30-32 Hesse Street Winchelsea



For more info, contact Hannah  
healthpromotion@hesse.vic.gov.au  
0417 846 292



## WANT TO JOIN LIONS?

- Enjoy fellowship with other members
- Provide service for the local community
- Raise funds for local, national & global causes



Contact Murray  
0409 405 645

## Wightons Lawyers

Dispute Resolution & Litigation  
Debt Collection  
Property Law  
Wills & Estates  
Powers of Attorney  
Business Law  
Family Law  
By appointment only

22 Willis Street, Winchelsea  
ph. 5221 8777

[www.wightons.com.au](http://www.wightons.com.au)



### SIMPLE STORAGE SOLUTIONS

- Personal & Business Storage
- Boat, Caravan & Vehicle Storage
- High Security Premises
- Individually Alarmed Units
- Electric Gate Access
- 7 Day Access & CCTV

YOUR STORAGE PROBLEMS SOLVED

5267 3116

6 ALSOP DRIVE, WINCHELSEA 3241

## Funeral Planning

*Working out what is best for you*

Prepaid Funerals, Funeral Bonds, Pay-by instalments...There are many options and it's important to make the right choice  
Alyson Burchell will be available by appointment to answer any questions about funerals and planning ahead



For more information or to make an appointment contact Sue on 5221 4788

Tuckers Community Office,  
Surf Coast Taxation Services, 22 Willis Street,  
Winchelsea

First Tuesday of the Month,  
By appointment 10.00am - 12.00pm

## Tuckers

Funeral & Bereavement Service  
...for a life worth celebrating

Caring for families since 1883  
5221 4788 [www.tuckers.com.au](http://www.tuckers.com.au)





# HOLIDAY PROGRAM

## Week 1

**MONDAY**  
23 SEPT

**TORQUAY: TAKEAWI CERAMICS  
'MAKE YOUR OWN MUG' 12PM – 3PM**

**TUESDAY**  
24 SEPT

**TORQUAY: BONES MMA 'YOUTH  
BOXING CLASS' 2PM-3PM**

**WEDNESDAY**  
25 SEPT

**WINCHELSEA: CREATIVE WORKSHOP  
'POT PAINTING' 1:30PM-4PM**

**THURSDAY**  
26 SEPT

**LORNE: 'YOUTH FISHING DAY' 12PM-  
2PM**

**FRIDAY**  
27 SEPT

**PUBLIC HOLIDAY – NO PROGRAM  
TODAY**

For more information on any of these programs please send us a message or email [youthdevelopment@surfcoast.vic.gov.au](mailto:youthdevelopment@surfcoast.vic.gov.au)

## 2 Winchelsea programs this school holidays – FREE for youth

Surf Coast Shire

Surf Coast Youth invite any young people aged 12-25  
to attend our FREE school holidays.

Two fantastic programs will be held at Winchelsea Community House:  
pot plant painting with Loz Green on Wednesday 25th September and Youth  
Pod and skate jam on Friday 4th October.

Please email Ella for more information:  
[esweeney@surfcoast.vic.gov.au](mailto:esweeney@surfcoast.vic.gov.au)



# CELEBRATION SERIES



## STEPHANIE ALEXANDER KITCHEN GARDEN FOUNDATION

The Kitchen Garden program is a fun and engaging initiative at our school, serving students from Grades 3 to 6 under the guidance of the wonderful Ms. O'Mara. This hands-on program allows students to dive straight into a variety of dishes from around the world. With the valuable support from their teachers, parent volunteers, and the broader school community, the students have mastered their cooking skills and have created several delicious meals that they all enjoy together at the end of each session.



**THE ops SIDE**  
BUSINESS & PROJECT MANAGEMENT

*IS YOUR BUSINESS GROWING AND THE DEMAND ON YOUR TIME FROM CLIENTS + PROJECTS HAS INCREASED?*

We back people and projects that strengthen our community, with operations support designed especially for service-based businesses.

[www.theopsside.com.au](http://www.theopsside.com.au)




13 11 14



**Domestic - Commercial - Rural**

# 0400 643 976

- All general Plumbing and Gasfitting • Water tanks and Pumps
- Renovations and Extensions • Hot water and Heat pump
- Split system and Wood heaters • Roof and Gutter
- Septic and Treatment plants • Excavation, Bobcat and Tipper
- Driveways and Earthworks
- Blocked drains and CCTV Inspection

**Simon McGillivray**  
Lic: 109610 Free Quotes, Fast & Friendly Service

**Green Lead Electrical**  
Connecting you to a greener future  
REC 23518

0467 097 101



**Servicing Geelong & the Surf Coast**  
Specialising in all residential electrical work including:

- Switch board & lighting upgrades
- Outdoor lighting
- Electrical safety checks
- Energy efficient LED lighting
- Ceiling sweep fans & ventilation
- Energy saving advice

**Phone Martin Wilkinson:**  
**0467 097 101**  
[greenlead@outlook.com](mailto:greenlead@outlook.com)



# Community Bank Winchelsea Scam Awareness Session

Kelly Turner <

In today's rapidly evolving digital world, online security has never been more important. Scams are becoming increasingly sophisticated, targeting individuals and organisations alike. It's essential to stay informed and vigilant when it comes to protecting your personal information and financial security.

The Community Bank Winchelsea hosted a special scam awareness and online safety education session for the amazing ladies of the Winchelsea Op Shop. The session, led by our knowledgeable staff members, Sally Dyer, and Branch Manager Dan Norris, was designed to equip the group with essential knowledge on how to identify scams, protect themselves from fraudulent activity, and safely navigate online banking.

During the session, the ladies were given practical advice on recognising the tell-tale signs of scams, such as phishing emails, fraudulent text messages, and fake websites. They also learned best practices for online banking, including how to create strong passwords, the importance of two-factor authentication, and tips on safeguarding their personal information. Sally and Dan provided real-world examples, ensuring everyone left with a clearer understanding of how to stay safe online.

This initiative is part of our ongoing commitment to support the local community, not only through financial services but also by empowering individuals with the knowledge they need to thrive in today's connected world. The response from the Op Shop



ladies was overwhelmingly positive, with many expressing their newfound confidence in spotting and avoiding scams.

At the heart of this session was our belief that knowledge is power. By raising awareness and providing education, we aim to help our community members protect themselves and their loved ones from falling victim to online fraud.

If you belong to a community group or organisation that could benefit from a free scam awareness session, please don't hesitate to reach out to us. We are more than happy to offer this important service to others in our region. Whether it's for a small group or a larger audience, we're here to help you stay informed and secure in the digital age.

To arrange a free information by the Winchelsea Community Bank, please contact Kelly Turner on 0459 997 102 today.

## Council election will be Postal


Tony Phelps, candidate for Winchelsea Ward

The Surf Coast Shire local-government elections in October will be conducted via postal vote. This convenient method ensures that all eligible voters can participate without needing to visit polling stations. The election process will determine the representatives for various wards, including the Winchelsea Ward.

Voters will receive their voting packs starting from around the 7th of October. It is now too late to register to vote if you are not already on the roll. All completed voting slips must be received by the Post Office no later than 6pm on the 26th of October, so it is advisable to post your vote well in advance to avoid any delays.

Each voting pack will contain the Ballot Paper (where you will mark your vote for your candidates in order of preference with a "1" for most-preferred). In addition, each candidate has the opportunity to provide a 200-word statement and a photo to help make informed decisions by understanding each candidate's priorities and vision for the community. Surf Coast Shire is now 3 Wards, with each one needing 3 Councillors. Note that candidates for a Ward do NOT need to live in that Ward.

Participating in the Surf Coast Shire elections is a vital way to contribute to your local community's governance. By using the postal voting system, voters in the Winchelsea Ward and beyond can ensure their voices are heard in shaping the future of their region. Remember the key dates and make your vote count!




Here for your Vitality. Care for the Whole Family

Chiropractic Care for:

- Pain - Prevention - Performance
- Nervous System Care - Sleep - Wellbeing
- Women's Health - Paediatrics - Vitality
- Stress & Anxiety - Holistic Healing

[www.onebodychiropractic.com.au](https://www.onebodychiropractic.com.au)

03 52672240 Shop 4/21 Hesse St Winchelsea









## Pollution Dilution - is dilution the solution to pollution??

**Friends of the Barwon has a webinar  
on Friday 20th September 2024—10-1130am**

This webinar is organised by Friends of the Barwon,  
an organisation advocating for a healthy, flowing Barwon river.

If you are interested in joining the event, please register at the address below.

**During this webinar, our presenters will share  
their expertise on the extent of various pollutants  
in our waterways, particularly emerging contaminants,  
their toxicity risk to aquatic species and strategies  
to reduce their impacts.**

Dr. Will McCance from Barwon Water will be our Q and A moderators.

Together, they will cover:

- \*microplastics
- \*pharmaceuticals
- \*agricultural chemicals,
- \*nanomaterials
- \*per-and poly-fluoroalkyl substances (PFAS)

Please register at: <https://events.humanitix.com/pollution-dilution-webinar-part-one>  
The event will be recorded and will be available on the Friends of the Barwon website.

## TREE WORKS & STUMP GRINDING



Fully insured and qualified  
climbing arborists.

Slashing and fire preparation.

FREE QUOTES  
**0488 553 650**

Mathieu Vaupres

[www.colactrees.com.au](http://www.colactrees.com.au)

Questions on sexuality and  
gender identity will be included  
in the 2026 Census

### Victorian Government

The Federal Government's announcement  
that questions on sexuality and gender  
identity will be included in the 2026  
Census is incredibly important.

Collecting this data will support better  
service provision and improve outcomes  
for members of our communities whose  
existence has historically been under-  
recognised and underrepresented.

Questions for the 2026 Census however,  
do not include intersex people.

People with innate variations in sex  
characteristics are part of our LGBTIQ+  
communities and always have been, but  
all too often their existence and needs are  
overlooked and misunderstood. They also  
deserve to be counted, and Victoria will  
continue to advocate for their recognition  
and protection.

By gathering baseline Census data  
about people with innate variations in sex  
characteristics, we can ensure all of our  
LGBTIQ+ communities have evidence-  
based opportunities to access the dignity,  
safety and fairness that we all deserve.



**Water Supply  
Specialists**

**WATER SOLUTIONS**

74 Dennis Street, Colac  
5231 1861



ALL THINGS WATER:

- PUMPS • PIPES
- FITTINGS • TANKS
- POOL CHEMICALS
- IRRIGATION
- WATER PURIFICATION
- SOLAR • REPAIR





# parkrun 28

14 September 2024

Trebeck Reserve, Winchelsea

35 participants completed the course through Trebeck Reserve this week in great running conditions. Five people completed their first parkrun. We had visitors from Bannockburn, Balyang Sanctuary, Torquay and Inverloch. Congratulations to Paul Burns, Lauren R, Christina Burns, Helen Woodall, Janet Vickers and who completed their personal best time for Trebeck Reserve. Well done everyone who walked, ran or volunteered.

This event was made possible by the following volunteers: \*Julie Buyel \* Helen Woodall \* Tess Buyel \* Ann Morsby \* Angela Hurren \* Neil McInnes \* Kate McInnes \* Melissa Christensen \* Murray Aisbett. Special thanks to Julie and Melissa who volunteered as Tail Walkers as well as Tess Buyel who volunteered as On Course Photographer.

Further details of this week's results can be found at [trebeckreserveparkrun.com.au/results](http://trebeckreserveparkrun.com.au/results)

Please check out our Facebook page for today's photos and further information. You do not need to be a runner. Around one third of participants walk the course.

It takes a minimum of six people each week to safely conduct an enjoyable event. Please email [trebeckreserve@parkrun.com](mailto:trebeckreserve@parkrun.com) if you are able to volunteer some of your time. Tasks are simple, sociable, fun and very much appreciated.

If you wish to join us any Saturday morning as a walker, runner or volunteer please complete the simple online registration at [parkrun.com.au/register](http://parkrun.com.au/register). This is free, only needs to be done once and can be used at any of the 5,000 plus parkrun events worldwide.

Well behaved dogs on a short hand held leash are welcome (no waist harnesses please)

parkrun was conducted at 495 locations across Australia this week.



# Winchelsea Star

Your Weekly Community Newspaper

Since 1977

[winchelseastar.org.au](http://winchelseastar.org.au)



## This week's Winchelsea Star

10 September 2024

Editor - Yvonne Stevens

Design - Susan Corby

Advertising - Sasha Gauntlett

Distribution - Linda Carter

**THANKYOU!**

### Community Newspapers

The Winchelsea Star is one of 70 members of the Community Newspaper Association of Victoria. These volunteer-driven papers inform and educate their communities, strengthening them socially and economically and helping them to be resilient in times of hardship. They publish stories to let their residents know the history and culture of their people and localities.

### Volunteer Committee

The Star is a registered non-profit Incorporated Association, directed by a Committee of Management with nine members.

### Where local stories come from

Articles, news, information and events are supplied by the local community and businesses, local state and federal governments, and various groups. Some organisations, such as parkrun, Winchelsea Golf Club, Winchelsea Lions, Winchelsea Primary

School and the Football and Netball Clubs, send stories and sports results regularly.

### Weekly production

Each edition needs the following input

- Editor(s)
- Advertising manager(s)
- Designer(s)
- Printer
- Distributor(s)

Ideally, all jobs are shared to spread the workload and cater for holidays, sickness.

All roles are voluntary except Designer and Printer which are sub-contracted.

The Winchelsea Star is compiled by Monday afternoons, and printed and digitally distributed on Tuesdays. Hard copies are distributed on Wednesdays, and are available from Wednesday afternoon from local shops.

### Like to help?

The Star is a community publication, by the community, for the community, and community participation is key to its ongoing success.

We welcome volunteers to assist in management, become a reporter to sniff out stories, create advertising graphics, distribute printed editions, or take photographs.

## send your stories

[news@winchelseastar.org.au](mailto:news@winchelseastar.org.au)

### LOCAL NEWS and ARTICLES WELCOME

Include name and address of the sender  
Email [news@winchelseastar.org.au](mailto:news@winchelseastar.org.au)  
Leave hard copy at IGA Supermarket

### DEADLINE 5pm Fridays

4pm Sundays - hard copy articles left at IGA

6pm Sundays - sports results and weekend events

### ADVERTISING

[advertising@winchelseastar.org.au](mailto:advertising@winchelseastar.org.au) 0408 102 802

## free digital subscription

[winchelseastar.org.au](http://winchelseastar.org.au)

### FOLLOW US ONLINE

[winchelseastar.org.au](http://winchelseastar.org.au)

### FACEBOOK

[facebook.com/TheWinchelseaStar](https://facebook.com/TheWinchelseaStar)

## production

**Editors:** Cerrie Fogan, Yvonne Stevens, Judy Cameron

**Advertising:** Sasha Gauntlett, Neil McInnes

**Design:** Susan Corby, Tony Phelps

**Printing:** Winchelsea Community House

**Website:** [winchelseastar.org.au](http://winchelseastar.org.au)

## committee

**President:** [president@winchelseastar.org.au](mailto:president@winchelseastar.org.au)  
Neil McInnes

**Treasurer:** [treasurer@winchelseastar.org.au](mailto:treasurer@winchelseastar.org.au)  
Cathy Cheadle

**Secretary:** [secretary@winchelseastar.org.au](mailto:secretary@winchelseastar.org.au)  
Tony Phelps

**Members:** Mick O'Mara, Linda Carter,  
Sasha Gauntlett, Judy Cameron,  
Yvonne Stevens, Cerrie Fogan



© Winchelsea Star Org. Inc. All rights reserved  
Winchelsea Star Organisation Inc.

Reg. No. A0053999F ABN 75 941 529 279  
[winchelseastar.org.au](http://winchelseastar.org.au) PO Box 5 Winchelsea 3241

Views expressed are not necessarily those of the Winchelsea Star or Committee. The Winchelsea Star reserves the right to edit or not publish any article.





# Winchelsea Star COMMUNITY NOTICEBOARD

email editor@winchelseastar.org.au or  
leave at Winchelsea IGA



Social Bridge is played

**EVERY TUESDAY**

**10.30 AM-1.00 PM**

**SENIOR CITIZENS CENTRE**

36 Harding Street Winchelsea

*New players always welcome*

Elaine Atkinson 0458 009 616

## WINCHELSEA PICKLEBALL

Winchelsea Leisure Time Centre  
(next to the Primary School)  
Wed 7-830pm or Thurs 10-11.30am.

All equipment supplied,  
wear suitable footwear.

Lesley Mathison 0438 672 197

## WINCHELSEA GIRL GUIDES

Are you interested in joining an  
enthusiastic, self-motivated team working  
with girls, 5-15 years?

Winchelsea Guides are seeking female  
adult volunteers. We are losing our lovely  
Unit Helper Teresa, who is moving to  
Geelong, and to comply with adult child  
ratios we need more helpers.

Come and help us provide a stimulating  
program giving leadership development  
opportunities for girls, as well as providing  
fun and friendship.

You will need -

- Police Check clearance  
(provided by Guide Centre)
  - Working with Children Check  
(free when working as a volunteer)
- Phone Yvonne 0448 672630

## WOOD SPLITTER AVAILABLE FOR HIRE

\$25 per hour, split and stacked.  
Ph 0437 612 901

## WINCHELSEA TENNIS CLUB

### JUNIOR COACHING

Mondays from 3.30pm with experienced  
Nicole Mullen, \$10

### SOCIAL TWILIGHT TENNIS

Monday evenings from 6.00pm.

All Welcome!

## WINCHELSEA OP SHOP

### Mens and Ladies Clothes Sale

Once again we will have our  
\$5 bag of clothes for Men and Ladies  
on over the next 2 weeks

Plenty of bargains,  
be sure not to miss out.

### \$5 bag of Clothes for Children

Sale on again for the next 2 weeks.  
You will be sure to find something  
that your child needs.

*Thanks everyone for your support in  
helping the Op Shop over the years.*

### Winchelsea Op Shop Ladies

## WINCHELSEA LIONS

Environmentally friendly  
compressed paper bricks for your fire.

Save on the rising cost of wood.

Pack 4 bricks \$5 - Roll small rolls \$2

Contact Alan 0476 475 422

## POLLUTION DILUTION - Is dilution the solution to pollution??

Friends of the Barwon

Webinar Friday 20th September 2024  
10-1130am

If you are interested in joining the event,  
please register at <https://events.humanitix.com/pollution-dilution-webinar-part-one>



FIRST SUNDAY OF EACH MONTH

	5 January 2025
6 October 2024	2 February 2025
<b>10 Nov 2024</b>	2 March 2025
1 Dec 2024	6 April 2025
	4 May 2025
	1 June 2025



To contact VICSES  
(Victorian Emergency Sector)

call **132 500**

for flood, storm, tsunami,  
and earthquake emergencies.

For life-threatening emergencies,  
call **000**

If you are deaf, hard of hearing,  
or have a speech impairment,  
contact VICSES through the  
**National Relay Service.**

**THANK YOU SES VOLUNTEERS !!**

## DIAMOND DOT DAY

Saturday 5th October

Senior Citizens Winchelsea

11.00 am-4pm

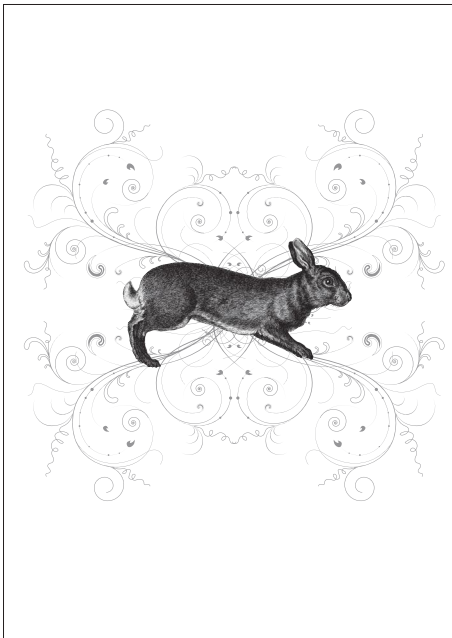
\$5 for the day or

\$10 if you want lunch as well  
Hot roast lamb and chicken rolls

Plus afternoon tea

Please let Tracey know

if coming for lunch for catering



**Kyeema**  
Rural Fencing Pty. Ltd.  
Jason Armstrong & Jay Hawker  
1080 Prices Lane, Ombersley, Victoria, 3241  
0419 565085 (Jason)  
0416 585817 (Jay)  
kyeemafarm@kyeemafarm.com.au  
Also incorporating domestic and rural tree trimming services.

**RICHARDSONS**  
LIQUID WASTE TRANSPORT WATER CARTAGE  
5234 6585 0417 385 984  
For all your septic tank, grease traps and interceptor pits servicing.  
Locally owned and operated

**DAVIC AG**  
**CONTRACTING AND EARTHMOVING**  
For all your harvesting needs  
Mowing, raking, round bailing, paddock prepping, spreading and sowing  
Call Dave on **0417 579 973** Bambra

**STS**  
ACCOUNTING GROUP  
**Your Taxation & Superannuation Specialists.**  
Winchelsea  
**5267 2673**  
[www.surftax.com.au](http://www.surftax.com.au)

**Dance ENROLMENTS NOW OPEN!**  
Winchelsea  
Dance Classes  
**REGISTER NOW**  
JAZZ - THEATRICAL TAP - HIP-HOP  
CLASSICAL BALLET - CONTEMPORARY  
Pre-School - Adults  
Beginner - Advanced Levels  
[www.melsdancecentral.com.au](http://www.melsdancecentral.com.au)

**OZ TREES NURSERY & TREE PLANTING SERVICES**

- Affordable seedlings—over 200 species
- Complete plantation service—farm forestry, shelter, aesthetics
- Deep ripping & mound ploughing. Rotary bed forming
- Our experienced staff will help you select species for your site conditions and needs

Also available—tree planting tools, milk cartons, plastic tree guards & bamboo stakes

569 Warrowie Rd. Colac  
P: 5233 6280 F: 5233 6393  
E: [info@oztrees.com.au](mailto:info@oztrees.com.au)  
W: [www.oztrees.com.au](http://www.oztrees.com.au)  
Open Monday—Friday  
9am—4:30pm

**Phone OzTrees for professional advice,**

**direct**  
**TEMPORARY FENCING**  
FOR HIRE - SUPPLIED & ERECTED - 7 DAYS  
GEELONG - BELLARINE - COLAC - SURF COAST  
PHONE CAM 0417 310 800

**DownRyte Excavations**

- Excavations
- Drilling and Piling
- Rock Placement
- Tree and Stump Removal

Sean Hunwick  
Mobile: 0409 447 288  
Email: [downryte@activ8.net.au](mailto:downryte@activ8.net.au)



# Vietnamese Boat People

## Final Part 3

Thanh Nguyen



Vietnamese people smuggling boat

*This is a true story, retold to me by my father and his family.  
Thanh Nguyen*

Drenched but relieved to finally be ashore, we are surrounded by police. They gather us up, document us with their logbooks and tell us to give them our possessions. The United Nations would give them back later. I still had my watch and had given it to a friend to hide but they found it. After surviving the plight of the sea, eventually the land pirates got the watch my mum had given me.

Despite the entrance fee we paid, we could finally relax. The imminent threat of danger had passed and we just needed to wait on the island until we could be accepted to immigrate to a country accepting refugees. For now we need to make this island our transitional home along with the other 40,000 people here.

I used some of the money I had meticulously hidden to buy my sister and I a sleeping area under one of the hundreds of shelters. When someone is repatriated, the island their spot is sold to a new arrival. We each have an area the size of a small towel underneath a makeshift shelter built from scrap materials foraged from old boats and plastic sheets. We share the sleeping quarters with 20 others and it is just enough room to lie down at night, sleeping with people on either side, cosy as a tin of sardines.

More time passes by. Out of boredom my friends and I decide we are going to construct a boat so we can sail out and access the blackmarket. Malaysian locals were aware of the massive demand for goods on the island. We have our own mini economy equipped with illegal imports. The threat of arrest or fines is worth the risk. Ships with goods sail close to the island and transactions would occur in the night waters about two to three kilometers offshore. Things were going well for my friends and I. We were able to buy goods and resell them for a small profit back on the island.

One night as we boarded the goods ship and were making our purchases, we were alerted that the Marine Police were approaching. In a panic, the seamen brandished machetes and threatened to kill us if we didn't leave the ship immediately. Our little boat had been damaged in the commotion and we were forced to jump overboard. My friends and I jumped into the water, black against the night sky, and watched as the boat sailed off. Unable to sail back and under threat of being arrested we need to hatch a plan to get back to land without being caught.

Together, we decided that we would need to split up and sneak back one by one. They put me in charge of all the money and I began the 2 kilometer swim back to the island. Fortunately, we



Bidong Island

were all strong swimmers and arrived safely without being caught but that was the end of that business venture for us.

Overcrowded is an understatement for the island. We have food, water, shelter and amongst the other 40,000 residents, plenty of medics but no medical supplies. We use up every last piece of scrap material to build what we can and reuse it until it becomes defunct but the lack of a sewage system inevitably means the island is debilitatingly polluted. I feel like we are going camping, in hell. Months pass with no way of communicating with our family. They don't know if we made the journey alive or how we are. My sister has been suffering with tuberculosis and her condition is worsening. She is too weak now to fetch water anymore so I take over. Tuberculosis is highly contagious and treatment requires 6 months of antibiotics. With no medical supplies she might not survive the wait to get expatriated. I hope that when we finally can send word that I don't have bad news for them.

Given my sister's condition, she has been accepted into France while I stay here to continue waiting. I learned later that she was given medical treatment as soon as she arrived, saving her life. Meanwhile, I will continue to stay in the overcrowded Bidong island for another 2 months before I am accepted to Germany. The days pass surely enough and Germany is a new challenge. The government is very generous and allows me to continue my studies. I just need to do it in a completely new language. The saving grace is the Vietnamese community I have around me. We help each other learn the language and culture of our new home and build a new life.

*Thanh is the principal dentist at Central Dental Geelong. She is very grateful to have been able to grow up and create new life in Australia after migrating here in 1990.*

**Bake Sale and Sausage Sizzle!**

**Games and stalls run by the Guides!**

**Facepainting and Balloon Twisting!**

# Guides Community Event

**Sunday 29th of September**  
11am-2pm

**Please bring cash**  
3 Mercer Street Winchelsea

**Proudly supported by:**

Community Bank  
Winchelsea & District

Bendigo Bank

HESSE RURAL HEALTH

IGA

**Smoothie bike!**

**WINCH HOUSE**  
Reaching into the community

**Bellarine Training & Community Hub**

**Start your career with the**  
**CERTIFICATE III IN EARLY CHILDHOOD EDUCATION and CARE**

**Mondays & Tuesday**  
**9am - 3pm**  
**(During School Terms)**

Contact: [manager@winchhouse.org.au](mailto:manager@winchhouse.org.au)  
or 03 5267 2028 For more information.

**We'd love to see you!**

# WINCHELSEA PLAYGROUP

Each Thursday during school terms.  
Come along between 10AM - 12PM.

Check out our Facebook Page for more information about the happenings of each session.

Playgroup Leader - Danni Menzies

Email: [winchelseaplaygroup@gmail.com](mailto:winchelseaplaygroup@gmail.com)

**St. Thomas's Hall,  
27-29 Barwon Terrace,  
Winchelsea VIC 3241**

**\$5 PER FAMILY**  
**INCLUDES MORNING TEA & HOT DRINKS FOR CAREGIVERS**

Scan to be part of our Facebook Group



**Featuring - The Billy Tea Bush Band!**

**MODEWARRE BUSH DANCE**  
**SAT. 5th OCTOBER**  
**MODEWARRE MEMORIAL HALL**

Bring along the kids for a fun evening!  
5.30pm - 9.00pm  
Sausage sizzle

Cost: \$10 per head  
\$25 a family  
\$5 child U 15 (No EPOS)

**ALL WELCOME**

**COME AND KICK YOUR HEELS UP!**

**FUN FOR ALL THE FAMILY**

Hosted by the Modewarre Memorial Hall Committee of Management



# Community rallies to oppose polluting Viva gas terminal once again

## Geelong Sustainability

An alliance of community and environment groups has raised concerns about Viva Energy's controversial plan to import gas through Geelong, after the Victorian Government planning department released a revised environmental assessment this week.

The Geelong Renewables Not Gas alliance, consisting of affected residents, people passionate about fishing and boating, as well as local and peak environment organisations, has expressed disappointment and frustration that Viva is pushing ahead with its gas terminal proposal despite being sent back to the drawing board last year.

In March 2023, the Victorian Planning Minister forced Viva to produce a 'supplementary' Environment Effects Statement after Viva's original documentation was found to be deficient in key areas.

ACF Geelong spokesperson Sanja van Huet said: "Last year the Victorian Government said that Viva Energy's environment assessment was deeply flawed, so why should the community trust them this time? More than 2000 people and organisations made submissions against Viva's project, including Geelong Grammar School, North Shore Residents Association, environment groups, school students, fishing enthusiasts and many other community organisations and individuals.

"During the last assessment, the marine models and studies were found to be inadequate to reflect the conditions in Corio Bay and the extent of flora and fauna to a level of detail required to determine the environmental effects of the terminal. This included concerns about what impacts the Project might have on adjacent Ramsar wetlands. An additional process just places a greater burden on the community to respond. Why should the community have to do Viva's homework twice?"

Geelong Sustainability CEO Dan Cowdell said: "The Geelong community sent a strong message last time that they do not support the project and will do so again. The Viva Energy Gas Import Terminal is a step backward for our community and the environment. We need to transition away from gas and invest

in renewable energy solutions to ensure a sustainable future for generations to come. The inadequate environmental studies conducted for the project last time raised serious concerns about the potential impacts on Corio Bay and adjacent Ramsar wetlands, cultural heritage for Traditional Owners, and the cumulative noise impact of the project, especially when combined with Viva Energy's existing refinery."

"At a time when the world faces a climate emergency, it is vital to transition away from fossil fuels and towards renewable energy solutions. Projects like the Viva Energy Gas Import Terminal move us in the wrong direction by creating infrastructure for more fossil fuels."

Environment Victoria Climate Campaign Manager Joy Toose said: "An LNG import terminal will only make our gas bills even higher and expose us to future price shocks from the international gas market. Half of Victoria's gas consumption happens in homes via inefficient appliances that are hurting hip pockets and our kids' health. We need to step up efforts to repower Victorian homes with renewable electricity and leave gas in the past where it belongs."

About Geelong Renewables Not Gas (GRNG): Formed in response to Viva Energy's proposed import terminal in Corio Bay, the Geelong Renewables Not Gas alliance includes North Geelong residents directly affected by the proposal, people passionate about fishing and boating, and people concerned about pollution and the climate crisis. It is backed by peak local, state and national environment groups, including Environment Victoria, Australian Conservation Foundation (ACF Geelong), Geelong Sustainability, Surfers for Climate, Australian Parents for Climate Action, Patagonia and others. Learn more at <https://geelongrenewablesnotgas.org/about-us>

Geelong Sustainability Group Inc.  
ABN: 85 007 177 238  
PO Box 258, Geelong VIC 3220  
E-mail: [info@geelongsustainability.org.au](mailto:info@geelongsustainability.org.au)

---

## Social media age limits to help parents and protect kids

### Victorian Government

The Government will work with South Australia and the Commonwealth to introduce age limits for social media – to protect children from harm and help parents push back against the tech giants.

Following detailed work commissioned by the Government of South Australia and supported by Victoria, the Commonwealth today announced a plan to deliver social media age limits through national legislation – with further detail on age limits and definitions to be determined through national-level consultation.

While Victoria was prepared to introduce state legislation, it will prioritise a nationally consistent approach and work with the Commonwealth to help deliver one set of clear rules to keep the tech giants in check.

Over coming months, Victoria will also lead a consultation round with parents, schools and children – to make sure their diverse needs and circumstances are considered during the development of the national reforms.

As a commonsense starting point for the national laws, Victoria points to the model outlined by the Honourable Robert French AC in his legal examination prepared for the South Australian Government.

Under this model, social media access would be prohibited for children aged under 14 and would require parental consent for children aged 14 and 15 to access. The model also proposed options for enforcement.

Importantly, under this model, a mechanism would be provided for social media services to be exempt if they pose little risk and support healthy development – such as educational sites, or programs designed for diverse learners.

The new national laws must also be flexible enough so states experiencing different online trends can be supported.



# The Climate Report

Judy Cameron

## Climate Council

With the impact of climate change being felt everywhere, how do we remain hopeful about the future for our loved ones, our communities and the world around us?

Here is Climate Councillor Lesley Hughes' thoughts: "When people ask me 'Are you hopeful?' I say, 'I have no choice but to be hopeful, because what happens if you're not hopeful? Well, then you give up, and none of us can afford to give up, not one of us."

### Greenland's Climate-Driven Megatsunami Caused The Whole Earth To Shake For 9 Days

*Edited from an article in 'ILFScience' by the author Stephen Luntz.*

Last year, a landslide sent a wall of water 200 meters (650 feet) high rushing down a Greenland fjord. Thankfully, not only was no one hurt but hardly anyone noticed. Seismologists across the globe were confused by signals they had never seen before. Fortunately, a research station at the mouth of Dickson Fjord, while abandoned for the winter, had automatic recording devices that have revealed an abundance of information. Even a recent paper revealing a week-long standing wave left out the fact it made the entire planet vibrate to a detectable degree for nine days.

One would normally expect the creation of a tsunami twice as high as the Statue of Liberty to attract at least a little attention, but constrained to an uninhabited fjord in Greenland that wasn't the case. The first time many people outside the area heard of the event was last month, almost a year after it happened, when a paper revealed that waves had bounced back and forth across the fjord for a week. These waves were perpendicular to the direction of the original tsunami, which flowed down the length of the fjord.

Although the standing wave was confined to the fjord, the Earth is one connected system, and the energy sloshing against the walls caused the crust to shake so hard it was picked up on seismometers on other continents.

"When we set out on this scientific adventure, everybody was puzzled and no one had the faintest idea what caused this signal," said Dr Kristian Svennevig of the Geological Survey of Denmark and Greenland in a statement. "All we knew was that it was somehow associated with the landslide. We only managed to solve this enigma through a huge interdisciplinary and international effort.

The landslide itself is probably caused by climate change, Svennevig and co-authors believe. The extreme temperature swings between Greenland's summer and winter mean that avalanches have always been common in spring as ice melts, but global heating is making that worse.



A before and after shot taken a month apart shows a little remodeling has gone on  
*Image Credit: Søren Rysgaard / Danish Army*

"Climate change is shifting what is typical on Earth, and it can set unusual events into motion," said Dr Alice Gabriel of the University of California, San Diego. Melting permafrost, reduced buttressing from ice, and changed precipitation patterns can all contribute to an event like this.

The authors calculated 25 million cubic meters (33 million cubic yards) of rock and ice tumbled down a 600-900 meter (2,000-3,000 foot) 45-degree slope into a side channel of the fjord. The volume is almost twice that of the world's largest building, the Boeing Everett Factory. Satellite images reveal at least four previous rockslides and one subsequent one, showing how much warmer conditions are messing with the site.

The research base on Ella island at the fjord's mouth – which provided some of the data to understand the event – suffered \$200,000 damage, and some archeological sites are suspected to have been destroyed. Tiny as that is in the context of other consequences of a warming planet, the authors noted it could have been much worse, as cruise ships often venture into the fjord's mouth. A tsunami issuing from the fjord at the wrong time, even highly reduced in size by its passage, could have been the new iceberg for sinking giant ships.

Full story here:

[https://www.iflscience.com/greenlands-climate-driven-megatsunami-caused-the-whole-earth-to-shake-for-9-days-75939?fbclid=IwY2xjawFR4uFl eHRuA2F1bQlxMAABHaQp68dpb1pndGXF4f-yq-uLRI9mRNDTNxQ8HK8KMpafIXjizevWV66Gt\\_A\\_aem\\_UQmgVOEW67rs\\_6ky9X5iNw](https://www.iflscience.com/greenlands-climate-driven-megatsunami-caused-the-whole-earth-to-shake-for-9-days-75939?fbclid=IwY2xjawFR4uFl eHRuA2F1bQlxMAABHaQp68dpb1pndGXF4f-yq-uLRI9mRNDTNxQ8HK8KMpafIXjizevWV66Gt_A_aem_UQmgVOEW67rs_6ky9X5iNw)

More amazing Climate stories from ILFScience here :  
<https://www.iflscience.com/search?q=climate%20change>



# Avian influenza restrictions eased

Dept Agriculture Victoria



Further changes have been made to control orders surrounding avian influenza cases in Victoria, given that no new cases have been detected since 24 June 2024.

- The restricted areas around Meredith and Terang have been removed and replaced with control areas.
- The newly designated control areas are the same size as the former restricted areas.
- The housing requirement in the newly designated control areas has been lifted, meaning birds no longer need to remain inside enclosures.

Permits for moving birds, poultry products, and equipment are still required for premises within control areas.

Permits are not required for vehicles transporting poultry feed in the control areas long as they meet biosecurity requirements.

Victoria's Chief Veterinary Officer Graeme Cooke emphasised the continued importance of cooperating to manage the outbreak. 'Our efforts to monitor disease continue, with staff visiting properties and testing birds in the control areas,' he said.

'As we continue to carry out 'proof of freedom' testing, we're confident that this testing will not find any positive cases of high pathogenicity avian influenza, proving to the world that our flocks are safe.'

'The collective actions of impacted property owners have been critical in enabling this easing of restrictions. We thank the poultry industry and property owners for their ongoing support and cooperation during this outbreak.'

Poultry farmers, backyard flock and bird owners are urged to continue to be vigilant and report any cases of unexplained bird deaths to the VicEmergency Hotline on 1800 226 226.

A list of resources and contact details for industry and individual support, including technical, financial and mental health information, support and services, is available in our resource directory.

More information, including movement permits, maps, and compensation details are available online at [agriculture.vic.gov.au/avianinfluenza](http://agriculture.vic.gov.au/avianinfluenza).

## FRIDAY 27TH SEPTEMBER

(AFL GRAND FINAL PUBLIC HOLIDAY)

### WINCHELSEA COMMUNITY HOUSE FUNDRAISER.

COFFEE AND  
EGG & BACON  
ROLLS!



8.30AM - 10.30AM  
AT THE SHIRE HALL



Café La Hoot

have you tried  
'owl' coffee?

1 willis st [cafelahoot@gmail.com](mailto:cafelahoot@gmail.com) 0407 528 999

## TRENCHES & HOLES PTY LTD.



**PHILLIP ROBERTSON**

**☎ 0427 672 945**

**WINCHELSEA**

- General Earth Works
- Driveways
- Trencher
- Kanga Loader
- Grader
- Excavator Work (3.5 & 6.5 Tonne)
- Tip Truck
- Rock Breaker
- Post Holes & Shed Footings

A.B.N 74006896898

Water Delivery



**WAZZA'S**  
WATER CARTAGE

Stainless Tanker Up to 22,000 ltr loads  
Barwon Water Registered

Domestic & Rural Water Supplies

Call Wazza

Mob: 0428 877 260

Email: [wazza@wazzas.com.au](mailto:wazza@wazzas.com.au) Web: [wazzaswater.com](http://wazzaswater.com)

## M & L DRAYTON

### PLUMBING SERVICES

REG No 24356 C/A No C02594

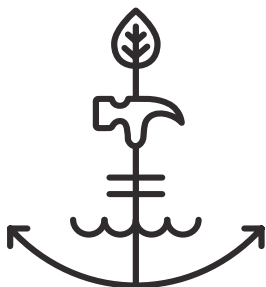
- Domestic and Rural Plumbing
- Roofing
- Sewerage & Septic
- LPG & Natural Gas Connections
- Motorised Drain Cleaning
- Backhoe Hire

**Phone Mark 5288 7244**

PO BOX 98 WINCHELSEA 3241

**Mobile 0428 520 142**

GUIM DESIGNS



CARPENTRY

- DECKS - SAUNAS
  - FLOORING - PERGOLAS
  - WEATHERBOARDS
  - HORSE SHEDS
  - CLADDING - FENCES
- ALL THINGS TIMBER AND MORE...

INSTAGRAM [guim\\_designs](https://www.instagram.com/guim_designs)

CALL PAT ON

**0401 232 674**



# INGLEBY HOMESTEAD, WINCHELSEA



## Sandra Jones

The land on which the INGLEBY homestead now stands was first settled by Thomas Armytage, one of the earliest pastoralists, with his partners Charles Franks and Thomas Ricketts, to follow Batman and Fawkner into the Port Phillip District in 1836.

His friend and mentor Joseph Gellibrand and John Batman disappeared while exploring land west of Geelong. They were never found. Thomas died in 1842 of typhoid fever and his brother George took over the property.

His father George snr left Tasmania in 1947 and stayed four years before building The Hermitage in Geelong. George Jnr replaced his original house with a more substantial house on INGLEBY.

In 1910 and 1911 parts of the estate were sold off and in 1923 the property was sold to Lyle Read and many more owners.

INGLEBY is of architectural, historical and archaeological significance to Victoria.



## WINCHELSEA HISTORICAL SOCIETY

Hesse Street Cnr Princes Highway Winchelsea 3241  
OPEN Wednesdays 1 - 4pm, Fridays 10 - 3pm



Ingleby Station Winchelsea, the property of Felix Armytage Esq

# Winchelsea Churches



## St John's Catholic Church

Father Joseph Panackal  
0404598558

Harding St, Winchelsea 3241  
MASS TIMES

5pm Sat. AUG. 3, 10, 17, 24 31,  
5pm Sat. SEP. 7, 14, 21, 28

## St Thomas' Anglican Church

Rev'd Phil Jacobson  
0477 672 042  
stthomaswac@gmail.com  
Barwon Tce, Winchelsea  
Service 10am

## Winchelsea Uniting Church

0475 777 301  
uca.winchelsea@gmail.com  
Hesse St, Winchelsea 3241  
Services 9.30am Sundays

## Thought for the Week

*"Genuine tranquility of the heart  
and perfect peace of mind,  
the highest blessings on earth  
after health,  
are to be found only in solitude  
and, as a permanent disposition,  
only in the deepest seclusion.  
Have a blessed week."*

**John Bader,  
Former U/C Accredited  
Lay Preacher**



## Melbourne Park takes centre stage for Grand Final Parade

The AFL Grand Final Parade will now give footy fans closer access to their heroes than ever before with a new route through the iconic Melbourne Park and MCG precincts.

Minister for Tourism, Sport and Major Events Steve Dimopoulos joined AFL Hall of Famer Jack Riewoldt to announce the new route through the heart of Melbourne's sporting precinct, kicking off at 10:30am on Friday 27 September, the Grand Final Eve public holiday.

Beginning at Melbourne Park Oval, players and coaches will head through the Melbourne Park precinct by motorcade, via the Tanderrum Bridge to Birrarung Marr, across William Barak Bridge to the MCG and finish at the AFL's free Footy Festival in Yarra Park.

The 2024 parade will make even greater use of Melbourne Park with a stage on the western side of the oval so fans can enjoy all the action as the two Grand Final combatants make their way towards the mighty G'.

The stage will have a live screen giving fans the chance to enjoy the celebrations and see their favourite players on stage.

Footy fans will be able to enjoy the build up to the Grand Final in Yarra Park with the AFL's free Footy Festival starting on Wednesday 25 September. A highlight of this year's will be an ice rink for kids and families – just one of the fun activations on offer as excitement builds.

There will also be seven massive AFLW clashes across Victoria ahead of the Grand Final, at Punt Road, Windy Hill, Kardinia Park, Swinburne Centre, Ikon Park, RSEA Park and Whitten Oval.

The Grand Final Parade and AFL Grand Final are part of a packed major events calendar that boosts Victoria's record \$39.3 billion visitor economy, featuring the Melbourne Cup Carnival, Australian Open, Formula 1 Grand Prix and Boxing Day Test.

The AFL Grand Final Parade kicks off at 10:30am on Friday 27 September.

## Iconic Flinders Street Station celebrates 170 years

Australia's oldest train station is celebrating a major milestone, having kept Melburnians moving for almost two centuries.

Flinders Street Station is turning 170 years old and remains the busiest station on the metropolitan network – serving more than 19 million passengers over the past year.

Previously known as 'Melbourne Terminus', Flinders Street Station began operations in 1854 through weatherboard sheds at a single platform on the banks of the Yarra River.

Part of the original station design lives on with a section of roof moved to Hawthorn Station in 1901, where it remains to this day.

By 1910, a new station building was opened, originally called 'Green Light' – and it was one person's job to manually change the departure clocks up to 900 times in an eight-hour shift.

In the modern era, locals and visitors continue meeting 'under the clocks' and more than 2,200 train services run on the metropolitan network on weekdays – with most services starting and ending at this iconic station.

From next year, Flinders Street is set to be connected to even more train services when an underground passenger connection opens between the station and the brand-new Town Hall Station, one of five new Metro Tunnel stations.

Flinders Street Station serves every part of the metropolitan network, in addition to many regional services, and remains the base for many of Metro's 7,100 employees.

The Labor Government's \$100 million upgrade of Flinders Street was completed in 2020, which increased space and seating for passengers – while ensuring that the city landmark is protected for future generations.



# We're halfway there - Clarksdale Bird Sanctuary

Trust for Nature

## Donate by 16 September to restore Clarksdale Bird Sanctuary

We're halfway to our target of \$110,000 to restore Clarksdale Bird Sanctuary, a wonderland for birds on Wadawurrung Country just south of Ballarat.

Thank you, your contribution is invaluable. Together we are restoring habitat forever. But we still urgently need your help to meet the target by 16 September.

If we can raise \$110,000, the Victorian Government will contribute a further \$217,000, tripling the impact of your donation.

That's nearly \$330,000 to regenerate vital habitat for some of our most threatened and unique birds.

And I have some exciting news. Just this week endangered Grey Goshawks have been spotted on the reserve, flying over the area that we can restore with your support.

These striking white birds of prey inhabit forests, but are sadly declining due to the loss of these habitats.

Clarksdale is one of the 18 areas of the state we've identified as a priority for protection on private land. Restoring this special place will improve the resilience of plants and animals to climate change, and help keep all our favourite birds common.

Clarksdale was the vision of farmer and conservationist Gordon Clarke, whose generous support enabled the creation of the reserve.



POWERFUL OWL,  
VULNERABLE

These nocturnal predators, Australia's largest owl, need large areas of habitat and old, hollow-bearing trees to nest and roost, both provided by the sanctuary.

Image: Ben William



DIAMOND FIRETAIL,  
VULNERABLE

Recently recognised as at risk of extinction, these glittering jewels are declining due to loss of their woodland habitat, but here at Clarksdale they have a safe haven.

Image: Ben Williams

With your support, we will be able to complete Gordon's vision, regenerating an area that was previously a pine plantation. We'll be able to restore this area and control weeds and rabbits, working alongside Traditional Owners and the dedicated volunteers who care for Clarksdale.



**WINCHELSEA GOLF CLUB**  
45 Anderson Street  
Winchelsea VIC 3241  
03 5267 2660

## WINCHELSEA GOLF CLUB

### Golf Results

Sue Cuthbert

**Wednesday September 11th**  
Women - Stableford  
Lesley Mathison (45) 31pts Tara  
Steward (19) 28 pts

**Saturday September 14 - Par**  
Neil Hickman (13) Square  
Stephen Cole (14) -2  
NTP: 6/15th Denis Chappell  
Golden Hole: 11th Bill Spencer

# MRP Steelworx

Matthew Partridge  
p 0418 672 334  
e mrpsteelworx@yahoo.com.au

## Welding Service

- Onsite welding
- Farm maintenance
- Farm machinery & equipment repairs
- Cattle & sheep yards
- Custom built trailers
- Supply & install gates



5234 6585 0417 385 984  
For all your domestic & stock water.  
Also available for road and civil construction  
Local owned and operated.

52672192 R & K Creative Framing  
for all your framing needs

free quotes  
pension discount  
specialist in Age & Disability Modifications

Ray & Kim Jansen  
10 Witcombe st  
Winchelsea 3241  
0414672192

Ray The Home  
Maintenance HANDYMAN  
abn 47928623462



## Winchelsea Supermarket

Trading Hours  
**Monday to Saturday**  
8.30am to 7.30pm  
**Sunday**  
10am to 7pm  
**Ph: 5267 2676**  
29 Main St, Winchelsea

## Antique Repairs

By **Doug Burns** est. 1976

- All Furniture
- French polishing
- Carving
- Veneering
- Wood Turning
- Porcelain



*Unusual Requests Welcome*

180 Barwon Terrace, Winchelsea

**0428 672 704**

*All About* **Mowers & Chainsaws**

Repairs to all makes and models of ride on mowers, domestic mowers, pumps, chainsaws, brushcutters and small engines.

Trading Hours: Mon - Fri 8am - 5pm Saturday 8am - 12 noon

**5267 2266** Cnr Princes Hwy & Lennox St Winchelsea

www.allaboutmowers.com.au  
accounts@allaboutmowers.com.au

FERRIS COX STIHL BRIGGS & STRATTON VICTA



## SOUTHERN GRAIN STORAGE PTY. LTD.

AG SUPPLIES FERTILISER GRAIN STORAGE SEED CLEANING

**(03) 5267 2351**

## Winchelsea Men's Shed



**For The Community**  
Men's Shed Kindling/Offcuts  
Bags of Kindling/timber offcuts are available for pick up from the Men's Shed on Wednesday's from 9.30 to 2.30.  
If you need a delivery made you can call Bill on 0438 083 373. The price for a bag of kindling is now \$7.00 (up from \$5.00).  
**Nesting Boxes**  
Bird or animal nesting boxes are available from The Men's Shed. These can be made to order. Call in on any Wednesday to have a chat.

## WINCHELSEA CONCRETING

• Driveways • Sheds • Decorative Concrete • Raft Slabs

**Robert Murphy**

☎ 0438 235 237

✉ winchelseaconcreting@outlook.com





# WINCHELSEA FACEBOOK



## Non-profit community Groups and Pages

What's on in Winchelsea	<a href="https://facebook.com/WhatsoninWinchelsea">facebook.com/WhatsoninWinchelsea</a>
Winchelsea FREE	<a href="https://facebook.com/groups/winchelseafree">facebook.com/groups/winchelseafree</a>
Winchelsea Community Information	<a href="https://facebook.com/groups/207538644446972">facebook.com/groups/207538644446972</a>
Winchelsea Classifieds 3241	<a href="https://facebook.com/groups/216942861684082">facebook.com/groups/216942861684082</a>
Winchelsea Lost and Found	<a href="https://facebook.com/groups/768187693217518">facebook.com/groups/768187693217518</a>
Winchelsea Op Shop	<a href="https://facebook.com/HospitalAuxiliaryOpShopWinchelsea">facebook.com/HospitalAuxiliaryOpShopWinchelsea</a>
Winchelsea Shire Hall	<a href="https://facebook.com/WinchelseaShireHall">facebook.com/WinchelseaShireHall</a>
Winchelsea Community House	<a href="https://facebook.com/winchelseacommunityhouse">facebook.com/winchelseacommunityhouse</a>
Winchelsea Coronavirus Community Support Group	<a href="https://facebook.com/groups/2676957719207927/">facebook.com/groups/2676957719207927/</a>
The Green Winchelsea Residents	<a href="https://facebook.com/groups/515322772623126">facebook.com/groups/515322772623126</a>
Growing Winchelsea Inc	<a href="https://facebook.com/growingwinch">facebook.com/growingwinch</a>
Winchelsea Star	<a href="https://facebook.com/TheWinchelseaStar">facebook.com/TheWinchelseaStar</a>
Winchelsea Movie Club	<a href="https://facebook.com/winchelseamovies">facebook.com/winchelseamovies</a>
Winchelsea Community Market	<a href="https://facebook.com/100083362387611">facebook.com/100083362387611</a>
Winchelsea Land and River Care Group	<a href="https://facebook.com/envirowinchelsea/">facebook.com/envirowinchelsea/</a>
Upper Barwon Landcare Network	<a href="https://facebook.com/UpperBarwonLandcare">facebook.com/UpperBarwonLandcare</a>
Winchelsea & District Historical Society Inc	<a href="https://facebook.com/Winchelseaanddistricthistoricalsociety/">facebook.com/Winchelseaanddistricthistoricalsociety/</a>
Winchelsea Wildlife Shelter	<a href="http://www.winchelseawildlifeshelter.com/">www.winchelseawildlifeshelter.com/</a>
SCARS - Surf Coast Animal Rescue Service	<a href="https://facebook.com/groups/415211698950674">facebook.com/groups/415211698950674</a>
Winchelsea Gardeners	<a href="https://facebook.com/groups/779878518703025">facebook.com/groups/779878518703025</a>
Winchelsea & District Historical Society	<a href="https://facebook.com/Winchelseaanddistricthistoricalsociety/">facebook.com/Winchelseaanddistricthistoricalsociety/</a>
Winchelsea Repertory Society Inc	<a href="https://facebook.com/winchrep/">facebook.com/winchrep/</a>
Winchelsea Globe Theatre	<a href="https://facebook.com/Winchelsea-Globe-Theatre-164790897641678">facebook.com/Winchelsea-Globe Theatre-164790897641678</a>
Winchelsea Uniting Church	<a href="https://facebook.com/winchelseaunitingchurch">facebook.com/winchelseaunitingchurch</a>
St Thomas' Anglican Church	<a href="https://facebook.com/StThomasWinchelsea">facebook.com/StThomasWinchelsea</a>
St John the Baptist Catholic Church	<a href="https://facebook.com/pages/Winchelsea-Catholic-Church/101775670163180">facebook.com/pages/Winchelsea-Catholic-Church/101775670163180</a>
Winchelsea Mainly Music	<a href="https://facebook.com/groups/668500343953191/">facebook.com/groups/668500343953191/</a>
Winchelsea Health Club	<a href="https://facebook.com/WinchelseaHealthClub">facebook.com/WinchelseaHealthClub</a>
Winchelsea Playgroup (School terms only)	<a href="https://facebook.com/groups/551663435367031">facebook.com/groups/551663435367031</a>
Winchelsea Girl Guides	<a href="http://www.guidesvic.org.au/">www.guidesvic.org.au/</a>
Winchelsea/Modewarre Scouts	<a href="https://facebook.com/1stModewarreScouts">facebook.com/1stModewarreScouts</a>
Winchelsea Fire Brigade	<a href="https://facebook.com/winchelseafirebrigade/">facebook.com/winchelseafirebrigade/</a>
Winchelsea SES	<a href="https://facebook.com/groups/WinchSES">facebook.com/groups/WinchSES</a>
Country Women's Association - CWA Winchelsea	<a href="https://facebook.com/pg/CWAWinchelsea/">facebook.com/pg/CWAWinchelsea/</a>
Winchelsea Bowls Club	<a href="https://facebook.com/Winchelsea-Bowls-Club-533783333344345/">facebook.com/Winchelsea-Bowls-Club-533783333344345/</a>
Winchelsea Blues Cricket Club	<a href="https://facebook.com/groups/8999049476/">facebook.com/groups/8999049476/</a>
Winchelsea Blues FC	<a href="https://facebook.com/WinchelseaFNC/">facebook.com/WinchelseaFNC/</a>
WYLD Winchelsea Youth Leisure and Drop in	<a href="https://facebook.com/groups/569737570027065/">facebook.com/groups/569737570027065/</a>
Lions Club of Winchelsea	<a href="https://facebook.com/LionsWinchelsea">facebook.com/LionsWinchelsea</a>
Winchelsea Probus	<a href="https://facebook.com/893535194971083">facebook.com/893535194971083</a>
Winchelsea Golf Club	<a href="https://facebook.com/winchelseagc/">facebook.com/winchelseagc/</a> <a href="https://facebook.com/groups/1324943804676697">facebook.com/groups/1324943804676697</a>

# Research identifies under-performing calves

## DairyUp

A new study has laid the groundwork for developing an early alert system to identify under-performing calves on automatic feeders.

The research, undertaken by Dr Sarah Legge as part of her PhD study with the Dairy Up team at University of Sydney, has found that under-performing calves could be identified from day five in the feeder system.

“The findings provide the basis to develop early alert systems for calves being reared with automatic calf feeders,” Dr Legge said.

The study found strong associations between the performance of female dairy calves at weaning and their subsequent performance as lactating animals.

A consistent weaning weight of about 80 kg/head translated to higher production, especially in lactation 1 and 2, and a longer life in the herd.

The research found up to 60kg variation in weaning weight with automated feeders, despite a very low mortality rate.

A subsequent study looking at the association between weaning weight and future yield and number of lactations in 1400 calves in a NSW dairy herd found that weaning weight was more strongly associated with survival in the herd than birth weight.

“For example, a calf with a weaning weight of 50kg had a 17% likelihood of lasting three or more lactations in the herd, compared with 40% for a calf with a weaning weight of 100kg,” Dr Legge said.

“Weaning weight and cumulative consumption at day five had a significant impact on total lifetime milk production.”

Further modelling investigated the effect of pre-weaning factors on removal from the herd, using a dataset from more than 14,000 animals from the same herd.

Dr Legge said birth weight, weaning weight and days in milk significantly influenced the likelihood of a cow being removed, with cows with a lighter weaning weight more likely to be removed from the herd early.

The research arose from a farmer’s observation of a relatively large, unexplained variability in the size of calves at weaning. Despite uniform management and adherence to best practice standards, the farmer was concerned that calves with problems were not always identified early enough for intervention or prevention of issues and was unsure of the impact of this variability on lifetime productivity and profitability.

Dr Legge said the findings were an example of the huge opportunity to use data from modern technologies such as automated calf feeders to improve farm management.

“On-farm records and the automatic feeders provided a rich data set including birth dates, weights at various ages, health indicators and feed intake,” she added.

More information: [www.dairyup.com.au](http://www.dairyup.com.au)



Calf auto feeders

## Do you watch too much TV?

**Rebekah Ellen**

Dear Winchelsea,

Do you ever find yourself procrastinating, watching too much TV? Then an hour goes by, and you’ve watched one episode, and then you’ve ended up watching eight hours’ worth of TV. What a time waster, mind-rotting machine.

Personally, this is an anonymous article from someone in Winchelsea. I haven’t watched TV for 10 years and may have watched two full series within that time. Barely at all

As a child, I would watch cartoons, but I wish I didn’t, and the other 80% of the time I would be climbing trees or inventing a robot in the backyard with Dad’s spare bits and bobs or even playing with other kids. I would be doing so many adventures as a child that now that I’m older, I reflect on how much TV can waste someone’s life away.

I think of all the other kids who play video games, which I’m repulsed by, especially at young ages. Violence and animations can be scary and detrimental to their sleep, causing nightmares and disruptions. What a time waster to sit and watch a box full of people when you could be out living.

Living is your entertainment, not a box in your own home! Most of us don’t meet the national guidelines for screen time for kids in general:

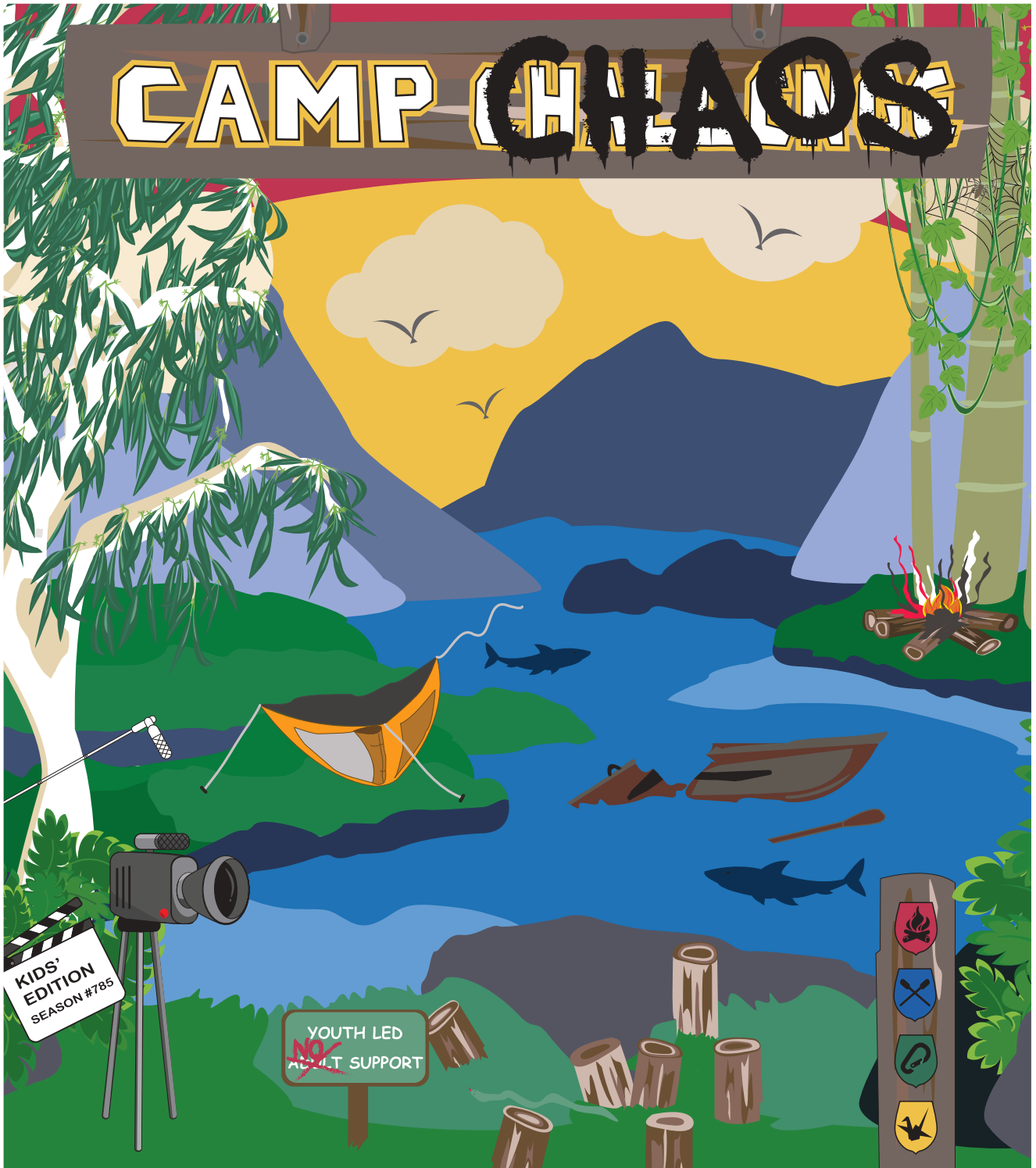
- No screen time for kids under 2 is great.
- No more than one hour a day for kids aged 2-5

And lastly, no more than two hours of sedentary recreational screen time per day for children and young people aged 5-17 years.

Think about your child and what you want them to think is normal in the world, watching TV for hours on end, with little physical activity (which doesn’t mean exercise), go for a walk, breath in nature, picnics, talking even just using the same period of time you would spend to watch tv just sit and talk to your family members instead of sitting down turning into couch potatoes.

Thankyou for reading





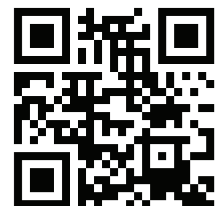
 **GEELONG  
SHOWTIME**



**Saturday September 21 at 7pm**  
**Sunday September 22 at 11am**  
**Sunday September 22 at 3pm**

**SEPTEMBER 21-22 2024**  
**geelongshowtime.com**

**Robertson Hall**  
**Geelong College**  
**Middle School**  
**399 Aberdeen Street,**  
**Newtown**



# SERVICES & ACTIVITIES IN WINCHELSEA

## VLINE TRAIN SERVICES

### TO MELBOURNE:

Mon - Fri 6:41 am, 7:57am, 11:14am, 2:08pm, 7:23pm  
Sat - Sun 9:26am, 1:30pm, 7:18pm

### TO WARRNAMBOOL:

Mon - Fri 8:56am, 11:55am, 2:50pm, 5:27pm,  
6:45pm, 8:50pm  
Sat - Sun 8:47am, 2:46pm, 8:34pm



## WINCHELSEA GIRL GUIDES

Our Unit meets at the Catholic Church Hall,  
Harding St Winchelsea each Monday 4.30pm-6pm  
All girls 5yrs- 15yrs Welcome!  
Contact Yvonne Orchard 0448 672 630  
or Emily LaPorte Phone 0476 719 381



## COUNTRY WOMEN'S ASSOCIATION

7pm second Wednesday of month  
Winchelsea Senior Citizens' Hall



## 1st Modda & 1st Winchelsea SCOUT GROUP

**Joey's:** Tuesdays of school term 5-6pm  
**Cubs:** Mondays of school term 6:30-8pm  
**Scouts:** Tuesdays of school term 6:30-8:30pm  
All at Modewarre Hall, Cape Otway Rd  
**Venturers:** Wed at Walton's Rd Venturer Den  
Contact Marie McPadden 0409 330147



## WINCHELSEA SES

Every Wednesday  
Visitors and inquiries welcome  
0408 102 802



## BUS TO THE HUB

For reservations on the weekly bus  
to the Eastern Reserve Hub,  
please phone 52671202.

## Winchelsea and District COMBINED PROBUS CLUB



Senior Citizens Rooms,  
Harding St, Winchelsea.  
New members always welcome.  
Enquiries Lorraine 0417 467 927

## SURF COAST MOBILE LIBRARY

**Hesse St, Fridays, 2pm-5pm**  
Surf Coast Mobile Library  
parked in Hesse Street (outside Shire Hall)  
Fridays 2:00 and 5:00pm unless it is a Public Holiday.



**SOCIAL BRIDGE**  
Every Tuesday 10.30 am - 1.00 pm  
Senior Citizens Centre  
36 Harding Street Winchelsea  
New players always welcome  
Contact Elaine Atkinson 0458009616

## WINCHELSEA TAXI

0429 672 888 or 5267 2888  
Wheelchair accessible  
10 seater bus available.

## WINCHELSEA TRANSFER STATION 55 Cressy Road, Winchelsea

Tuesday	2pm-4pm	Saturday	1.30-3.30pm
Thursday	2pm-4pm	Sunday	9.30-12.30pm

Closed on Christmas Day,  
but open on other public holidays  
that fall during their normal operating hours.  
[www.surfcoast.vic.gov.au/disposalsites](http://www.surfcoast.vic.gov.au/disposalsites)



## WINCHELSEA PLAYGROUP

Every second Thursday 10am-12pm  
St Thomas Anglican Church Hall  
cnr Barwon Tce and Hopkins St, Winchelsea  
Contact: Danni Menzies 0432019944  
[winchelseaplaygroup@gmail.com](mailto:winchelseaplaygroup@gmail.com)  
Facebook - Winchelsea Playgroup 2019  
**New families welcome**





## Winchelsea Community House Inc. A6247K

28 Hesse Street, PO BOX 75, WINCHELSEA, Vic. 3241

Phone: (03) 5267 2028 Email: [manager@winchhouse.org.au](mailto:manager@winchhouse.org.au)

ABN: 48 932 340 254

### FIRST AID & CPR TRAINING

Saturday 9<sup>th</sup> November, 2024

Winchelsea Shire Hall

Full First Aid 8.30am - 2.30pm \$170

CPR Only (8.30am-10.30am) \$70

Bookings - [reception@winchhouse.org.au](mailto:reception@winchhouse.org.au)

### Tai Chi

Friday Mornings 9.00am – 10.00am

In the Helen Verity Room,  
Winchelsea community house

**Next Class 13<sup>th</sup> September**

\$10 per session

### Certificate III Early Childhood Education & Care

We are excited to be able to run this training commencing on the **7<sup>th</sup> October 2024**.

For more information and to Enrol contact

[reception@winchhouse.org.au](mailto:reception@winchhouse.org.au)

### Crochet Group

Every Second Saturday

1.30pm in the Winchelsea Community Centre

**Next group is on 21<sup>st</sup> September**

\$5 per class, book your spot at  
[reception@winchhouse.org.au](mailto:reception@winchhouse.org.au)

### Carer's Corner (NEW)

Come along, connect with other carers, have a cuppa and a chat, and share useful resources.

**20th September**  
**11.00am – 12 noon**

At the Winchelsea Shire Hall

Collection tin for donations.

Let us know if there is a Program, Activity or Event you would like to see at Winchelsea Community Centre or the Shire Hall.

To keep up to date with everything that's happening at Winch house.

**FOLLOW US ON FACEBOOK**

<https://www.facebook.com/winchelseacommunityhouse>

### CHATTY CAFÉ

**"Sip, Chat, Share, Care"**

**Every Friday 10.30am – 12 noon**

Winchelsea Shire Hall

**FREE, Everyone Welcome.**

Collection tin for donations.

**The Winchelsea Community House aims to provide a space to connect with others in our community through a wide range of programs and activities.**

**There are many opportunities to learn new skills or further develop existing ones for fun, for your resume or for your confidence and mental health.**

## Otway Producers Festival

**Sunday, October 20, 2024**  
**9.30am – 3pm**  
**Colac Showgrounds**

Taste the best of the Otways under one roof in a celebration of local makers and growers at the Colac Showgrounds on October 20.

The Otways Producers Festival will feature market stalls with farm-fresh food, drinks, flowers and wool from across the region, along with live music, hands-on kids' activities, maker demonstrations and an informative line-up of speakers on the festival stage.

Organised by the Otway Harvest Trail, the festival will shine a light on local people behind small-scale food and fibre production. It will also celebrate the people who add value to the Otways food basket – winemakers, distillers, brewers and makers of ice cream, cheese, pasta, preserves and others tasty treats.

"There'll be no shortage of delicious food and drink to try, and we'll have hands-on activities for kids of all ages," says Tom Dennis, president of the Otway Harvest Trail. "We'll have Timboon Fine Ice Cream churning fresh ice cream to taste, and Schulz Organic Dairy will be hand-churning butter. You can also find out how DK Potatoes make those famous purple chips, and take your own spud seedling home with you.

Organisers want to encourage locals to make new connections and think a bit more about the food that's grown across the Otway Ranges, plains and hinterland.

They also want to showcase the opportunities for jobs and training in the region's flourishing food bowl.

"We're lucky to live in such a productive region with good soil, rain and some seriously hard-working people on the land," Mr Dennis explains. "Our region is home to much-loved big brands like Bulla, Western Star and Australian Lamb, and this festival is a way to remind locals that smaller scale operators add so much depth and flavour to the place we call home."

Local makers and growers will be interviewed on the festival stage by Colac-born food journalist and broadcaster Wendy Hargreaves, who will uncover the stories behind the produce and dive into topics ranging from regenerative farming through to job prospects.

Food stalls will serve up good honest fare, with a variety of drinks to enjoy at the event's indoor tables. These are some of the local businesses on show on the day (with updated details here):

**OTWAYS  
PRODUCERS  
FESTIVAL**

**Sunday 20 October 2024**  
 9.30am-3pm  
 Colac Showgrounds

TASTE THE BEST OF THE OTWAYS  
 IN ONE PLACE.

Enjoy locally-grown food, drinks, flowers & fibre  
 with live music, demonstrations, market stalls  
 and informative speakers.

PROUDLY PRESENTED BY

**OTWAY  
HARVEST  
— TRAIL —**

For more info go to [www.otwayharvesttrail.org.au](http://www.otwayharvesttrail.org.au)

- Schulz Organic Dairy
- Pennyroyal Cheese
- 3JARSFULL
- Timboon Fine Ice Cream
- Otway Pasta Company
- Lake View Cafe Colac
- Drakes Fresh Produce
- Otway Flower Farm
- Timboon Railway Shed Distillery
- Otway Brewing
- DK Potatoes
- Babche Wines
- Keayang Maar Vineyard
- Tardie
- Hot Chilli Mama
- Otways Distillery

*\$2 entry fee. No dogs. Bring cash, carry bags and refillable water bottles.*





EXPECT  
NOTHING  
LESS



TICKETS ON SALE  
OCTOBER 8

GRANDPRIX.COM.AU

ALBERT PARK CIRCUIT | 13 - 16 MARCH 2025

THE F1 FORMULA 1 LOGO, F1 LOGO, F1, FIA FORMULA ONE WORLD CHAMPIONSHIP, FORMULA 1, GRAND PRIX AND AUSTRALIAN GRAND PRIX AND RELATED MARKS ARE TRADEMARKS OF FORMULA ONE LICENSING BV, A FORMULA 1 COMPANY. ALL RIGHTS RESERVED.



# R.A.K. DAVIS & SONS

## CARTAGE CONTRACTORS

WINCHELSEA

SUPPLIER OF ALL QUARRY MATERIALS, TRUCK HIRE  
 CARTAGE OF GRAIN, LIME, GYPSUM & SUPER  
 LANDSCAPE & GARDEN SUPPLIES

56 WILLIS ST, WINCHELSEA

Ph – 5267 2094

Ryan – 0438 672 281

email: rakdavissons@gmail.com



mainly music est. 1990

Fun, Interactive music sessions for pre-school children (0-4 y.o.) and parents/caregivers

*When: Mondays from 10 to 11 am (runs during school terms)*

*Where: St Thomas' Hall  
 25 Barwon Tce.*

To Enquire ring: 0407838256

### CONCRETER

Alister Aitken

No job to big or small

- Driveways - Carports - Crossovers - Footpaths -  
 Sheds Slabs - Colored Concrete - Concrete  
 sealing - Exposed Aggregate - & more -

Call or text for a no obligation free quote

Servicing our local Winchelsea & Surrounding  
 Areas

alaitken.aa@gmail.com or Alister - 0411 871 950

A.B.N 47 228 574 460



17 Alsop Drive

- ❑ LOG BOOK SERVICE
- ❑ AUTO ELECTRICAL
- ❑ TOWING
- ❑ AIR CONDITIONING
- ❑ CLUTCH & BRAKES
- ❑ TYRES
- ❑ WHEEL ALIGNMENT
- ❑ BATTERIES

### CAR, TRUCK REPAIRS & Roadworthys

PH: 5267 3001

Mob: 0417 137 457

### HESSE RURAL HEALTH



### Volunteers Required

Volunteers are one of Hesse's greatest assets, playing a vital role to enhance the quality of Hesse services & client experiences.

- Bus Driver
- Outings Assistant
- Resident Visitor
- Events & Activities Assistant
- Group Wheelchair Walkers
- Appointment Escort
- Social Support Activities
- Gardening - Winchelsea
- Hospital Auxiliary Member
- Consumer Advisory Committee
- Marketing & Fundraising Committee

For more information please contact Hesse on (03) 5267 1200 or via email reception@hesse.vic.gov.au

### Knuckey's Winchelsea

Ph: 5267 2011

Knuckey's have in stock a complete range of batteries to suit tractor, heavy machinery, cars, utes

The largest range of the best oil for your vehicles—**CASTROL**—*'when only the best will do'*

The largest range of V belts.  
 A, B, C, D M Sections  
 Bolts and nuts for all occasions  
 Steel cut to size





# Community Bank



## Winchelsea & District

**CELEBRATE THE COMMUNITY**

### **JOIN US AT THE MARKET**



**OCTOBER 6TH  
SUNDAY 9 TILL 1PM  
FREE COMMUNITY EVENT  
ANIMAL FARM  
KIDS ACTIVITES**





**Moriac Veterinary Clinic**

**0447 781 089**

**PHONE 24 HOURS**

**784 Hendy Main Road Moriac**

**info@moriacvet.com**

**www.moriacvetclinic.com.au**

**HOURS // Monday - Friday: 8am - 5pm**

Commercial | Industrial | Domestic

**HAMILTONS**

**Truck & Bobcat Hire**

**Give Aaron a Call**

**0438 438 623**



*Charles Stewart & Company are leading livestock and real estate service providers covering Victoria's south west*

	<b>LIVESTOCK</b>
Jamie McConachy	0418 522879
Peter McConachy	0408 522878
Matt Nelson	0428 315400
Gerard Bohan	0400 005541
Lachie Barclay	0438 346291
John Thornton	0408 526367
Dougal McIntyre	0439 575612
Ross Spitty	0419 539717



	<b>REAL ESTATE</b>
Michael Stewart	0418 520467
Daryl Osborne	0419 388341
Anthony McDonald	0418 593597
Gerard Bohan	0400 005541
Stephen Lugg	0417 556098
Josh Lamanna	0417 586032



Office  
56 Bromfield Street, Colac  
www.charlesstewart.com.au

**HESSE RURAL HEALTH**



- Acute Care\*
- Urgent Care\*
- Residential Aged Care\*
- Community Nursing
- Dietetics
- Physiotherapy
- Occupational Therapy

- Diabetes Education
- Social Support Groups
- Counselling
- Home Care
- Health Promotion
- \* services from Winchelsea only

www.hesseruralhealth.com.au

P: (03) 5267 1200 E: reception@hesse.vic.gov.au

[eldersrealestate.com.au](http://eldersrealestate.com.au)



## You're in Safe Hands With Peter Lindeman Delivering Exceptional Results for Over 20 Years

If you're thinking of selling a Rural or Lifestyle acreage property on the Bellarine, the Greater Geelong region or beyond then think Peter Lindeman.

Peter spent 20 years managing farms before jumping the fence to sell them; and over the last 23 years he's helped over 350 vendors achieve extraordinary results, more often than not surpassing their expectations. Why not let Peter show you how he can help you achieve an outstanding result for your property.

**Peter Lindeman - 0418 525 609**  
**RURAL AND LIFESTYLE SALES MANAGER - ELDERS GEELONG**

**E: [peter.lindeman@elders.com.au](mailto:peter.lindeman@elders.com.au)**



**HF RICHARDSON**

PROPERTY

Servicing all your real estate needs

**Ken McDonald 0418 524 150**



**Residential | Rural Lifestyle | Agricultural Farms**





# M&B WOOD PLUMBING

Call Matt - 0418 319 357  
[mbwoodplumbing.au](http://mbwoodplumbing.au)

## Servicing Winchelsea & surrounds

- General maintenance & blocked drains
- Gas fitting & hot water service upgrades
- New homes & renovations

## NO MATTER WHAT YOUR PROBLEM, DODDS ELECTRIX CAN DEFUSE THE SITUATION.

RURAL, INDUSTRIAL, COMMERCIAL, DOMESTIC  
 PHONE 0438 887 360  
 EMAIL: DODDSY@FASTMAIL.FM  
 PO BOX 36 BIRREGURRA, VICTORIA 324  
 REC: 17520 ABN: 64 581 250 880

# M&T BUILDING & CONSTRUCTION

NEW HOMES | EXTENSIONS | RENOVATIONS Ph: 0409 433 687  REGISTERED Building Practitioner

## AlfordBuilt

*New Homes, Renovations, Extensions, Bathrooms, Decks & Pergolas*

0408 583 362  
[stephen@alfordbuilt.com.au](mailto:stephen@alfordbuilt.com.au)



REGISTERED Building Practitioner

## NATURAL GAS CONNECTIONS

### M. & L DRAYTON PLUMBING SERVICES

#### YOUR LOCAL LICENSED

- PLUMBERS (24356)
- GAS FITTERS
- GAS CONVERTERS
- CARBON MONOXIDE TESTING

MARK 0428 520 142

## Lupton BUILDERS

SPECIALISING IN QUALITY



REGISTERED Building Practitioner

- NEW HOMES
- ALTERATIONS
- CARPORTS
- BATHROOMS
- EXTENSIONS
- DECKS
- VERANDAHs
- WINDOW REPLACEMENTS
- RENOVATIONS
- PERGOLAS
- RE-GLADS

LEIGH LUPTON  
 0438 840 104

CHRIS LUPTON  
 0407 681 514

[LEIGHLUPTON17@GMAIL.COM](mailto:LEIGHLUPTON17@GMAIL.COM)

Est. 1977

## GREAT Bundle Deal on Bosch Hot Water... FROM ELGAS

Buy any Bosch Bluetooth continuous flow hot water model - 16Litre, 20Litre or 26Litre and Receive \$100\* in Elgas bonus LPG gas credits



\*For more details: [www.elgas.com.au/appliances/boschcplflow-16-20-26-lpg-bundle-sale](http://www.elgas.com.au/appliances/boschcplflow-16-20-26-lpg-bundle-sale)

AND... for new customers, an additional \$80 WORTH OF LPG GAS CREDITS\*\* when you open a new LPG Gas account with Elgas



Ask about the Elgas Easy Payment Plan - 12 months interest free\*\*\* on selected LPG appliances  
 \*\*\*Further details can be viewed at: [www.elgas.com.au/epp](http://www.elgas.com.au/epp)

Automatic tanker gas bottle refill OR gas bottle exchange refill is available for home or business...  
 Call today or visit our website for our many customer benefits and latest offers

131 161  
[www.elgas.com.au](http://www.elgas.com.au)

ELGAS





Located at 36 Main Street, Winchelsea 3241

For any enquires or bookings please contact the clinic on 5292 8028.  
Or visit our website: [www.winchmc.com.au](http://www.winchmc.com.au)

Opening Hours:

Monday - Friday 8:00am - 5.00pm  
(Monday Evening Clinics available and selected Saturdays)



Our clinic accepts online bookings via the app called HotDoc.  
Download the app on the App Store or Google Play or head to our website.

# WINCHELSEA LIONS CLUB

## PAPER RECYCLING

Paper depot rear of Senior Citizens Rooms  
Harding Street  
**NEWSPAPERS, MAGAZINES, PHONE BOOKS WANTED**



**RAISING FUNDS FOR OUR TOWN & DISTRICT**  
0408 520 606



Winchelsea and District

## Ebony knows banking

If you need help with yours, you need to meet Ebony.

Ebony shares her knowledge of banking so you can achieve what you want from life.

And, she can meet you when and where it suits you; at the branch, over the phone, or via video call.

**If you need help with your banking, call Ebony Berg, Loan Specialist on 5267 3189 or search Bendigo Bank Winchelsea.**

[bendigobank.com.au](http://bendigobank.com.au)



Bendigo and Adelaide Bank Limited ABN 11 068 049 178, AFSL/Australian Credit Licence 237879. A1415950 OUT\_33710515

### Winchelsea Men's Shed



For The Community

51 Hesse Street

Every Wednesday from 9:30am

New members always welcome

For more detail contact:  
Ray Atkinson (Co-ordinator)  
0407 839 139

or  
[winchmensed@gmail.com](mailto:winchmensed@gmail.com)

Need a job done?  
Woodworking jobs,  
furniture repairs, small jobs.  
Drop in and talk to us.



### WINCHELSEA LIONS CLUB

ARE SELLING ENVIRONMENTALLY FRIENDLY SHREDDED PAPER COMPRESSED BRICKS FOR YOUR FIRE  
SAVE ON THE RISING COST OF WOOD BY INCLUDING PAPER BRICKS AS WELL

PACKET OF 4 ROARS (BRICKS) \$5  
ROLL OF PURRS (SMALL ROLLS) \$2

AVAILABLE AT LIONS PAPER SHED  
36 HARDING STREET  
SATURDAY MORNINGS  
10AM - 12 NOON  
FROM 4<sup>TH</sup> MAY UNTIL SOLD OUT

EFTPOS AVAILABLE  
CASH ACCEPTED





# Winchelsea Football & Netball Club



Angie Mawson

## Winch Juniors get League Recognition

### LEAGUE HONORS CELEBRATED TONIGHT

Huge congratulations to Millie Partridge winning the Highest Goal scorer for U/17s. What a legend!

Congratulations Lexi Czerniawski and Elizabeth Humphries for both finishing in the top 10 for the U/15s League Best & Fairest vote count.

Reani Mawson has capped off a stellar year finishing equal 3rd by just one vote in the U/17s Best and Fairest vote count.

Well done everyone on a great season. Looking forward to our club best & fairest next Friday night. 🥳👏💙💙



## Celebrating Junior Honours at League presentation

Back:  
Reani Mawson, Monet Drew,  
Millie Partridge, Ash Bell,  
Front:  
Lexi Czerniawski  
and Abi Kichenmeister



- Domestic and Commercial hire equipment • Industrial welding gas
- Digging and Earthmoving equipment • New trailers and trailer repairs
- Firewood • Stockists of Royal Oil Lubricants products
- LPG for domestic and commercial requirements

Give Chris and the Team a call on **5232 1177** or email [info@colachire.com.au](mailto:info@colachire.com.au)  
[www.colachire.com.au](http://www.colachire.com.au)  
 101 Wallace St Colac 3250



# Winchelsea Star

ISSN 2202-6851



9 772202 685002

Since 1977

## Winchelsea Taxis is now Surfcoast Taxis

Our fleet of vehicles are growing to all late models and we are covering an extended area including Winchelsea, Colac, Bannockburn, Inverleigh, Great Ocean Road and Geelong.  
 We have a fleet of 10 seater Maxi Vans, all with capacity to carry wheelchairs.

**Surfcoast Taxis Pty Ltd**  
**All Bookings: 0408 325 992**  
**Fax: 5267 2699**  
**Email: [bannotaxis@gmail.com](mailto:bannotaxis@gmail.com)**  
 (Admin or Stan 0429 672 888)  
 66A Batson Street  
 Winchelsea 3241




Accounts NDIS provider. TAC, DVA etc  
 NDIS provider number 4050001044  
 NDIS provider number 4050001048



## DEFIBRILLATORS IN WINCHELSEA

### Accessible to the public 24 hours a day

The Winchelsea Lions Club has compiled a list of public access defibrillators in Winchelsea. Four more have been installed at Winchelsea Primary School, Winchelsea Bowls Club Hesse St, the netball courts Eastern Reserve Hopkins St and at the Globe Theatre near the side entrance. If anyone knows any others that have 24 hour public access, please let Linda Carter know on 0439 817 263.

			
Bendigo Bank 11 Main Street	Ambulance Victoria 33 Willis Street	Uniting Church 33 Hesse Street	Senior Citizens 36 Harding Street
			
Men's Shed 51 Hesse Street	Winchelsea Golf Club 13 Anderson Street	Hesse Rural Health 8 Gosney Street	Wurdale Memorial Hall 220 Wurdale Road

