



THE
BOMBAY STORE®

Authentic Indian Handicrafts



Digital Collection

Home Decor | Wellness | Pashmina | Furnishings | Accessories

Our Legacy

The Bombay Store enjoys a unique legacy, with roots tracing back to India's freedom struggle. The Bombay Store was founded by the great Indian patriot Shri Lokmanya Balgangadhar Tilak to reduce dependency on foreign goods and provide a sustainable platform to Indian artisans.



P.M Road Flagship Store, Est. 1906

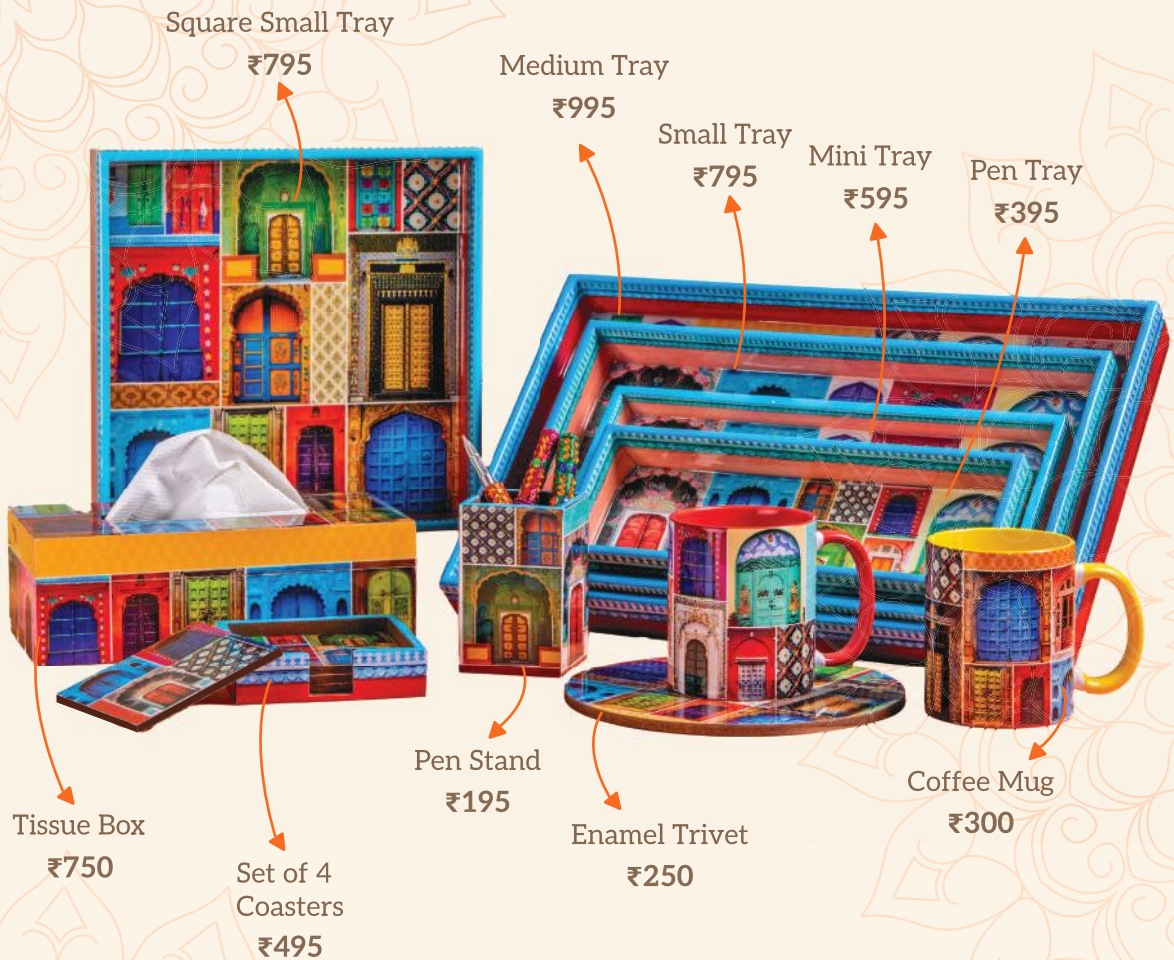
The store remains true to its roots and continues to showcase authentic handicraft products from all across India. Our mission is to give our customers an experience to "Discover a New India" through our innovative range of products, a blend of contemporary and traditional Indian culture.

Over the years, The Bombay Store has had the privilege of thriving under great businessmen like Shri Jamshedji Ratanji Tata, Shri Jawaharlal Nehru. From marble artefacts of Agra, to Pashmina shawls of Kashmir, Dokra art from Orissa, to Kantha work bedsheets of Jaipur; our store is a treasure trove of all things Indian!

Broad categories of products available at The Bombay Store: Artefacts, Home Décor, Souvenirs, Pashminas and Fashion Accessories.

Dwaar

-TABLEWARE-



The Bombay Store presents 'DWAAR' the collection of the very Indian doors. These doors are still seen in the houses of Indian villages. Keeping their originality the artwork has been creatively enhanced to present to you a very vibrant yet a graceful collection.

Blue Pottery

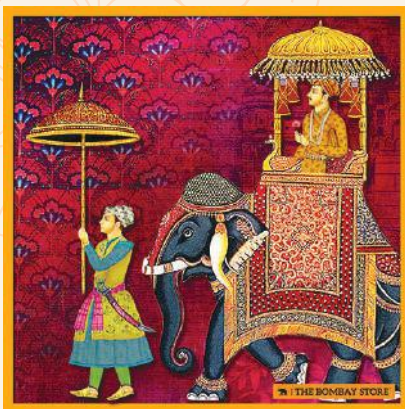
-TABLEWARE-



The Art of Blue Pottery gets its name from the striking cobalt blue dye used to colour the pottery. Blue pottery is famous for its exquisite floral designs. The Bombay Store pays tribute to this traditional art of Jaipur in a contemporary digital range.

King Procession

-TABLEWARE-



Showing the grandeur of a Royal Maharaja's procession, this artwork takes inspiration from Rajasthan's miniature paintings. The fine details, vibrant colors, and traditional motifs highlight the richness of royal life and the cultural heritage of the region.

Madhubani

-TABLEWARE-



Madhubani painting, a traditional art form from the Madhubani district of Bihar, is created using natural colours derived from vegetable dyes. Bringing the charm of this unique heritage into your home decor.

Royal Jharokha

-TABLEWARE-



The Royal Jharoka design showcases a majestic elephant and horse framed in ornate palace arches. With vibrant colors and intricate floral detailing, it brings home the timeless grandeur of Indian royalty.

Bani Thani

-TABLEWARE & BAG-



The art of Bani Thani is inspired by the iconic Rajasthani miniature paintings of Kishangarh, known for their graceful figures, arched eyebrows, lotus-like eyes, and poised beauty. Often called the “Mona Lisa of India”, Bani Thani paintings depict elegance and beauty.



Regal Mayura

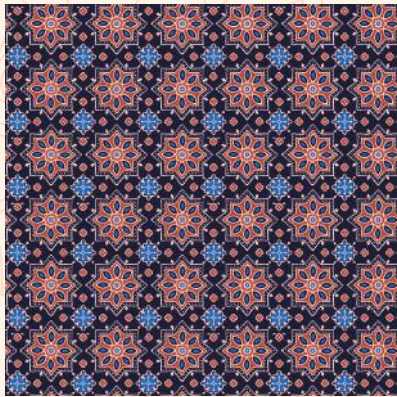
-TABLEWARE-



Pretty peacocks in quintessential gold, this collection exudes grace and sophistication. The Regal Mayura design draws inspiration from traditional Indian motifs, symbolizing beauty, prosperity, and pride. With its intricate detailing and timeless charm, it is sure to add a majestic and royal touch to your space.

Ajrakh Sitara

-BAGS-



Ajrakh hails from the dessert regions of Kutch, Gujarat, and carries a legacy that spans centuries. Distinguished by its deep indigo and rich maroon hues, the art of Ajrakh is created using natural dyes and an intricate process of resist-printing. Each piece is hand-printed with precision using hand-carved wooden blocks, requiring great patience and skill. The repeating geometric and floral motifs are not only visually striking but also symbolize harmony and balance.

Mughal Floral

-BAGS-



Inspired by the elegance of Mughal art, this artwork celebrates the beauty of nature through intricate floral motifs. The delicate patterns, symmetrical designs, and rich hues reflect the opulence of the Mughal era while bringing a timeless charm to your home decor.

Elephant Floral

-TABLEWARE AND BAGS-



The Elephant Floral design celebrates the rich heritage of Indian art with its intricate blend of majestic elephants and delicate floral motifs. Elephants symbolising strength and good fortune, are beautifully adorned in traditional attire while the blooming flowers represent prosperity and growth.



Gifts with The Bombay Store

Terms & Conditions

1. Being Handicrafts; each product is unique! Due to this, there might be minor variations in colour and make of the product.
2. Plenty of customized solutions can be provided - logos, branding, packaging etc. Though we request sufficient time for this.
3. Our selection of products is dynamic and constantly evolving. Please reach out to our team to experience the current assortment. Something different might catch your eye!
4. The prices might have fluctuated from those mentioned in the catalog. Please reach out to our team for the final price and quotation.
- 5. We do offer discounts on bulk order. Contact the numbers mentioned on the last page for more details.**
6. For items marked 'Price on Request', please reach out to our team to receive final price.

Swadeshi since 1906 and proud of it...



Store : +91 98191 27733

Corporate Office : +91 82913 93831

Flagship Stores

P.M. Road, Fort, Mumbai

M.G. Road, Camp, Pune

Our Store Outlets across India

Mumbai | Pune | Ahmedabad | Noida | Hyderabad |

Bengaluru | Cochin | Thiruvananthapuram

Alibaug | Jaipur

orders@bombaystore.com

www.thebombaystore.com



Scan QR Code To
Download E-Catalogue