



MILLSTREAM TOWER

FLOOR PLANS



N



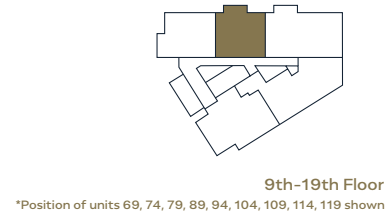
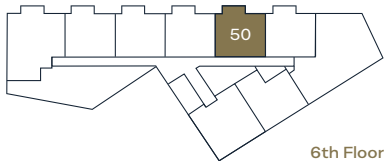
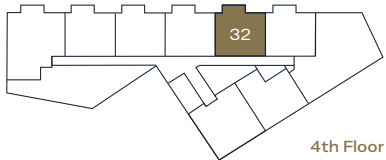
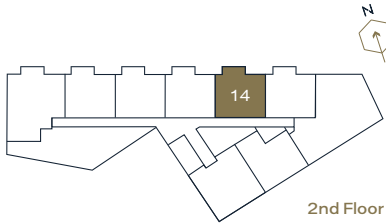
Plans not to scale



Type 1

1 Bedroom Apartment: 55.9 sq m

APT. NO.	FLOOR	APT. NO.	FLOOR	APT. NO.	FLOOR
14	2	74	10	104	16
32	4	79	11	109	17
50	6	89	13	114	18
69	9	94	14	119	19



Key:
HIU Heat interface unit
W/M Washing machine
(Plans not to scale)

	mm	ft
Master Bedroom	3410 x 4300	11'2" x 14'1"
Bathroom	2290 x 2010	7'6" x 6'7"
Kitchen	2420 x 2150	7'11" x 7'0"
Living/Dining	4460 x 5628	14'7" x 18'5"

Important notice: this brochure and the description and measurements herein do not form part of any contract and whilst every effort has been made to ensure accuracy, this cannot be guaranteed. Prospective purchasers should not rely on this information but must get their solicitor to check the plans and specification attached to their contract. These particulars are believed to be correct at time of publishing but this cannot be guaranteed. Appliance locations may vary in certain apartments.

Type 1A

1 Bedroom Apartment: 55.9 sq m

APT. NO.	FLOOR	APT. NO.	FLOOR
16, 17	2	43, 44	5
25, 26	3	52, 53	6



Key:

HIU Heat interface unit

W/M Washing machine

(Plans not to scale)

	mm	ft
Master Bedroom	3410 x 4300	11'2" x 14'1"
Bathroom	2290 x 2010	7'6" x 6'7"
Kitchen	2420 x 2150	7'11" x 7'0"
Living/Dining	4460 x 5628	14'7" x 18'5"

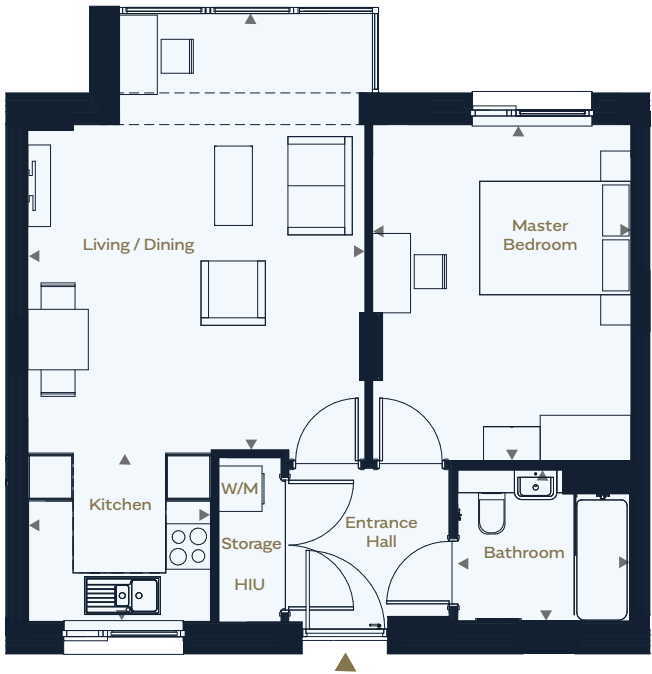


Important notice: this brochure and the description and measurements herein do not form part of any contract and whilst every effort has been made to ensure accuracy, this cannot be guaranteed. Prospective purchasers should not rely on this information but must get their solicitor to check the plans and specification attached to their contract. These particulars are believed to be correct at time of publishing but this cannot be guaranteed. Appliance locations may vary in certain apartments.

Type 1B

1 Bedroom Apartment: 55.9 sq m

APT. NO.	FLOOR	APT. NO.	FLOOR
6	1	33	4
15	2	42	5
24	3	51	6



Key:

HIU Heat interface unit

W/M Washing machine

(Plans not to scale)

	mm	ft
Master Bedroom	3410 x 4300	11'2" x 14'1"
Bathroom	2290 x 2010	7'6" x 6'7"
Kitchen	2420 x 2150	7'11" x 7'0"
Living/Dining	4460 x 5628	14'7" x 18'5"

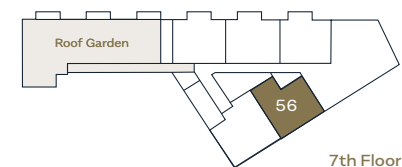
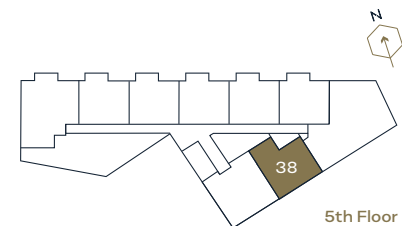


Important notice: this brochure and the description and measurements herein do not form part of any contract and whilst every effort has been made to ensure accuracy, this cannot be guaranteed. Prospective purchasers should not rely on this information but must get their solicitor to check the plans and specification attached to their contract. These particulars are believed to be correct at time of publishing but this cannot be guaranteed. Appliance locations may vary in certain apartments.

Type 3

1 Bedroom Apartment: 56.5 sq m

APT. NO.	FLOOR
38	5
56	7



Key:

HIU Heat interface unit

W/M Washing machine

(Plans not to scale)

	mm	ft
Master Bedroom	3140 x 4290	10'4" x 14'1"
Bathroom	2310 x 2010	7'7" x 6'7"
Kitchen	3320 x 2110	10'11" x 6'11"
Living/Dining	5080 x 3100	16'8" x 10'2"
Balcony	3490 x 1330	11'5" x 4'4"

Important notice: this brochure and the description and measurements herein do not form part of any contract and whilst every effort has been made to ensure accuracy, this cannot be guaranteed. Prospective purchasers should not rely on this information but must get their solicitor to check the plans and specification attached to their contract. These particulars are believed to be correct at time of publishing but this cannot be guaranteed. Appliance locations may vary in certain apartments.

Type 7

1 Bedroom Apartment: 55.9 sq m

APT. NO.	FLOOR
90	13



Key:
HIU Heat interface unit
W/M Washing machine
(Plans not to scale)

	mm	ft
Master Bedroom	3410 x 4300	11'2" x 14'1"
Bathroom	2270 x 2010	7'5" x 6'7"
Living	4520 x 3285	14'10" x 10'9"
Kitchen/Dining	3950 x 3150	12'11" x 10'4"

Important notice: this brochure and the description and measurements herein do not form part of any contract and whilst every effort has been made to ensure accuracy, this cannot be guaranteed. Prospective purchasers should not rely on this information but must get their solicitor to check the plans and specification attached to their contract. These particulars are believed to be correct at time of publishing but this cannot be guaranteed. Appliance locations may vary in certain apartments.

Type 8

2 Bedroom Apartment: 71.6 sq m

APT. NO.	FLOOR	APT. NO.	FLOOR
71	10	91	14
81	12	106	17
86	13		



Key:

HIU Heat interface unit

W/M Washing machine

(Plans not to scale)

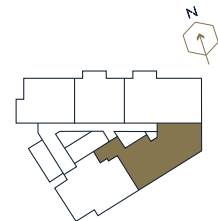
	mm	ft
Master Bedroom	4070 x 3990	13'4" x 13'1"
Bedroom 2	3180 x 2550	10'5" x 8'4"
Bathroom	2740 x 2000	9' x 6'6"
Living/Dining/ Kitchen	6600 x 3920	21'8" x 12'10"
Balcony	2930 x 1387	9'7" x 4'6"

Important notice: this brochure and the description and measurements herein do not form part of any contract and whilst every effort has been made to ensure accuracy, this cannot be guaranteed. Prospective purchasers should not rely on this information but must get their solicitor to check the plans and specification attached to their contract. These particulars are believed to be correct at time of publishing but this cannot be guaranteed. Appliance locations may vary in certain apartments.

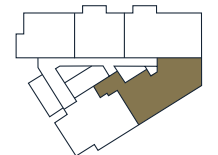
Type 9

2 Bedroom Apartment: 83.1 sq m

APT. NO.	FLOOR	APT. NO.	FLOOR
67	9	82	12
72	10	87	13



9th-10th Floor
*Position of units 67, 72 shown



12th-13th Floor
*Position of units 82, 87 shown



Key:

HIU Heat interface unit

W/M Washing machine

(Plans not to scale)

	mm	ft
Master Bedroom	3110 x 4320	10'2" x 14'2"
Bedroom 2	2470 x 3880	8'1 " x 12'9"
Bathroom	2620 x 2420	8'7" x 7'11"
Living/Dining/Kitchen	5480 x 7150	18' x 23'5"
Balcony	3940 x 1433	12'11" x 4'8"

Important notice: this brochure and the description and measurements herein do not form part of any contract and whilst every effort has been made to ensure accuracy, this cannot be guaranteed. Prospective purchasers should not rely on this information but must get their solicitor to check the plans and specification attached to their contract. These particulars are believed to be correct at time of publishing but this cannot be guaranteed. Appliance locations may vary in certain apartments.

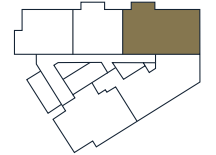
Type 11

2 Bedroom Apartment: 78.2 sq m

APT. NO.	FLOOR	APT. NO.	FLOOR
68	9	108	17
103	16	113	18



9th Floor



16th-18th Floor

*Position of units 103, 108, 113 shown



Key:

HIU Heat interface unit

W/M Washing machine

(Plans not to scale)

	mm	ft
Master Bedroom	4000 x 4220	13'1" x 13'10"
Bedroom 2	3020 x 4300	9'11" x 14'1"
Bathroom	2290 x 2010	7'6" x 6'7"
Living/Dining	4490 x 5650	14'9" x 18'6"
Kitchen	3100 x 2250	10'2" x 7'4"
Balcony	1270 x 1240	4'2" x 4'2"

Important notice: this brochure and the description and measurements herein do not form part of any contract and whilst every effort has been made to ensure accuracy, this cannot be guaranteed. Prospective purchasers should not rely on this information but must get their solicitor to check the plans and specification attached to their contract. These particulars are believed to be correct at time of publishing but this cannot be guaranteed. Appliance locations may vary in certain apartments.

S P E C I F I C A T I O N



KITCHEN

- Contemporary handle-less kitchen units with soft close doors
- Laminate Tectonica worktop with upstand
- Zanussi Integrated appliances including:
 - 4-ring ceramic hob
 - Fan-assisted oven
 - Extractor fan
 - Fridge-freezer
 - Dishwasher
 - Washer dryer (freestanding located in utility cupboard)



MECHANICAL AND ELECTRICAL SYSTEMS

- Whole house mechanical ventilation system with heat recovery
- Underfloor heating via Heat Interface Unit supplied by central energy centre
- Mains powered smoke detectors in all rooms, with battery back up
- Sprinkler system throughout apartment
- Video entry phone system via resident's mobile phone and TV connection
- Fob controlled access to main entrance, lifts and staircase doors



OUTDOOR SPACE

- Balcony or terrace to selected apartments
- Communal landscaped garden on 7th floor for exclusive use by residents



PARKING

- Millstream Tower is a car-free development. There is no parking on site and purchasers will not be able to apply for a residents parking permit from the London Borough of Haringey



BATHROOM

- Bath with fixed rain shower head and separate hand-held shower hose
- Laminate bath panel
- Thermostatic wall mounted chrome bath/shower control with bath filler
- Contemporary style basin and mixer tap
- Soft close dual flush WC
- Mirrored dark laminate vanity and shelving unit
- Chrome plated heated towel rail
- Porcelain floor tiles and ceramic wall tiles
- Shaver socket
- LED downlights



INTERIOR FINISHES

- Soft oak laminated flooring to hallway, lounge and kitchen
- Wool mix carpet to bedrooms
- LED downlights to lounge and kitchen
- Pendant light to hallway and bedroom
- Blinds to all windows







millstreamtower.london