



# **3** / **FIXED PLANT SOLUTIONS**



**PERTH**  
(08) 9459 8600  
**KALGOORLIE**  
(08) 9021 8300

**ADELAIDE**  
(08) 8231 1513  
**NEWMAN**  
(08) 9175 1164

**DARWIN**  
(08) 8963 5621  
**MT ISA**  
(07) 4743 6458

✉ [sales@bendtechgroup.com.au](mailto:sales@bendtechgroup.com.au)  
🌐 [bendtechgroup.com.au](http://bendtechgroup.com.au)

2-10 Kewdale Road, Welshpool WA 6106



**FIXED PLANT SOLUTIONS****INDEX**

<b>CDEC PROCESS</b>	<b>///</b>	<b>2 - 4</b>
<b>ACCESS AND INSPECTION DOORS</b>	<b>///</b>	<b>5 - 8</b>
<b>SCAFFOLD REPLACEMENT PLATFORMS</b>	<b>///</b>	<b>9</b>
<b>FIXED PLANT PLATFORMS</b>	<b>///</b>	<b>11 - 22</b>
<b>CONVEYOR PLATFORMS</b>	<b>///</b>	<b>23</b>
<b>GENERAL PURPOSE PLATFORMS</b>	<b>///</b>	<b>25 - 29</b>
<b>CONVEYOR PRODUCTS</b>	<b>///</b>	<b>31 - 33</b>
<b>WORKSHOP TRESTLES</b>	<b>///</b>	<b>35 - 37</b>
<b>WORKSHOP EQUIPMENT BENCHES AND CUTTING TABLES</b>	<b>///</b>	<b>39 - 43</b>
<b>WORKSHOP EFFICIENCY STATIONS</b>	<b>///</b>	<b>45 - 46</b>
<b>WORKSHOP STORAGE BENCHES</b>	<b>///</b>	<b>47</b>
<b>WORKSHOP STORAGE CONTAINERS</b>	<b>///</b>	<b>48 - 51</b>
<b>WORKSHOP STORAGE RACKS</b>	<b>///</b>	<b>52 - 59</b>
<b>WORKSHOP STANDS 1 - 15 TONNE</b>	<b>///</b>	<b>60 - 63</b>
<b>WORKSHOP STANDS 16 - 30 TONNE</b>	<b>///</b>	<b>64 - 65</b>
<b>WORKSHOP STANDS 31 - 60 TONNE</b>	<b>///</b>	<b>66 - 67</b>
<b>WORKSHOP STANDS 80+ TONNE</b>	<b>///</b>	<b>68 - 69</b>

# WE OFFER A FULL CONSULTING, 3D SCANNING AND ENGINEERING SERVICE

Projects and the associated challenges often require custom solutions, we take pride in our CDEC system. Consultation, Design, Engineering and Construction is our holistic approach to solution development making maintenance on-site safe, efficient and easy.

## CDEC PROCESS



**CONSULTATION** We come to you and visit your site to get a hands-on feel for your project. The aim of our consultation is to listen to and understand your requirements. If the project requires it, our 3D scanning capabilities will streamline measurement and data capture. This approach allows us to develop and discuss with you on-site, possible solutions to your problem, and the benefits we can offer.



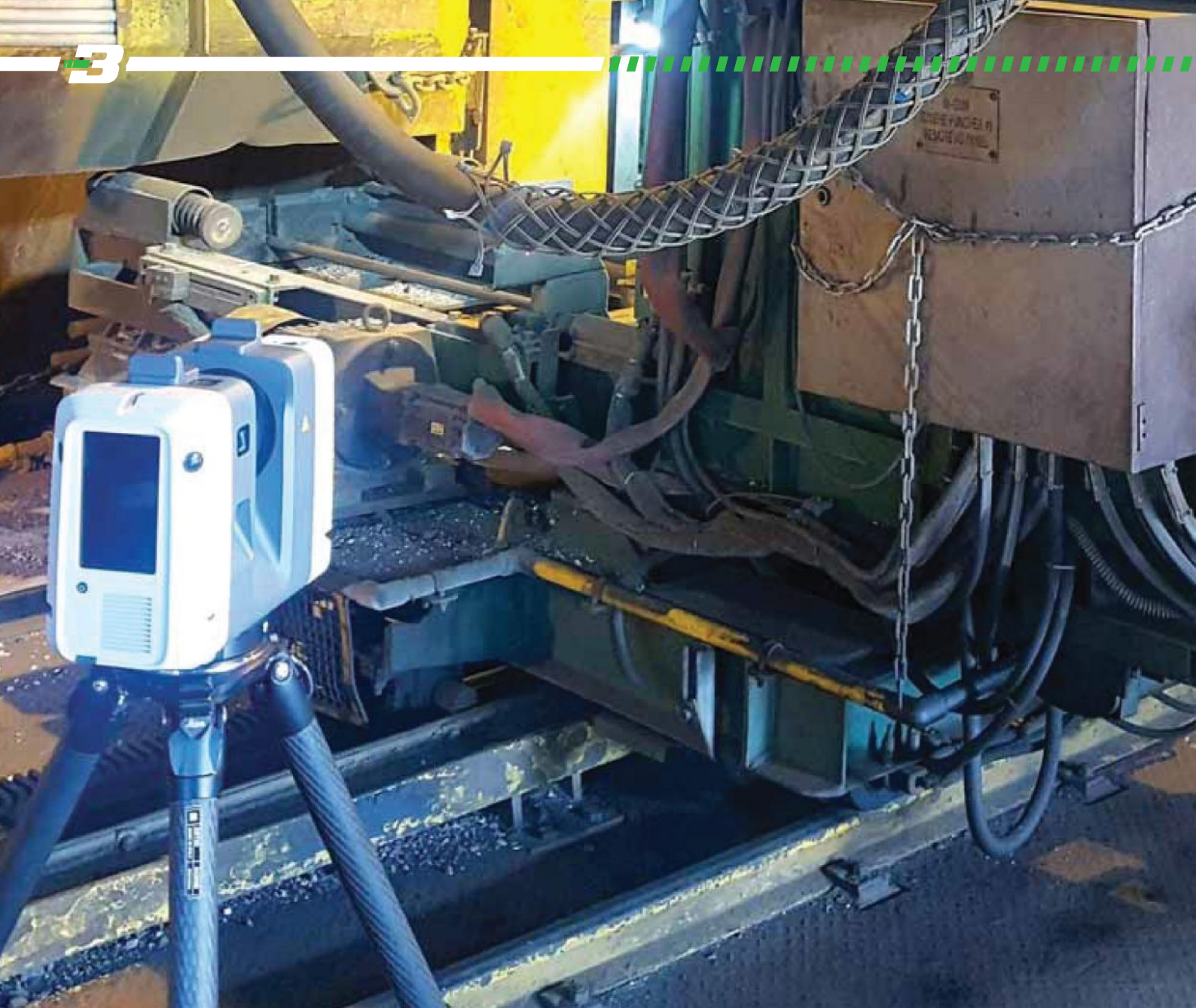
**DESIGN** After the consultation we go back to our design team to begin the development of your custom solution. Our team produce designs in CAD Design complete with all drafting documentation ensuring an advanced manufacturing process. Our process allows and encourages you to be involved in the design stage and collaborate with our highly skilled team.



**ENGINEERING** Once the design is approved, we begin the development and engineering process. This ensures that the right material is used for your project to guarantee structural and functional integrity. We provide full certification that includes WLL, load ratings, integrity reports as well as certificate plates and identifications. We design and engineer all our solutions to ensure full compliance to ensure full compliance with Australian standards.



**CONSTRUCTION** Finally, once the project is ready and certified for construction, we manufacture your solution. We test, machine, fabricate and surface treat as well as trial fit your custom project. We only manufacture high quality products that provide long lasting, safe and efficient solutions.



Our long-standing relationships, expertise and dynamic team of solutions engineers has enabled us to provide certified efficiencies across a range of fixed plant scenarios. We understand that fixed plant maintenance requires safety, speed, accuracy and reliable execution to achieve operational efficiency. This has led us to develop a range of solutions designed and engineered to satisfy these very requirements.

The ability to 3D scan, process, design, engineer and fabricate means we can solve your on-site problems. Ensuring certification and compliance is at the forefront of every product or service and understanding that some situations require customisation; we are trusted partners in safety, efficiency and productivity.

# FIXED PLANT DESIGN, ENGINEERING AND FABRICATION

Although we have a comprehensive range of standard products which we have developed over an extended period of partnerships between planning, site personnel, management and ourselves. Most of these solutions started out as a specific problem which required us to develop a solution that enabled the actions required for operational efficiency.

**OUR APPROACH MEANS YOUR PROBLEMS ARE IN THE HANDS OF THOSE THAT SOLVE THEM.**

- COMFORT** We take ownership of our role in operational efficiency with a system that provides a holistic solution.
- CERTAINTY** Being available, mobile and equipped to provide on-site consultations and scanning to ensure drawings, scopes of works and solutions are correct is invaluable.
- CONTROL** Design and engineering capabilities are crucial to providing certified and compliant solutions. We enable control over the situation.
- MOTION** Enabling processes and production to continue on-time is a crucial. We provide reliable, consistent pathways towards this goal.
- IMPACT** Solutions that are executed on-time consistently leaves an impact on the bottom line. Productivity receives a boost which is compounded by the benefits of the efficient use of resources which are freed up due to efficient solution development.

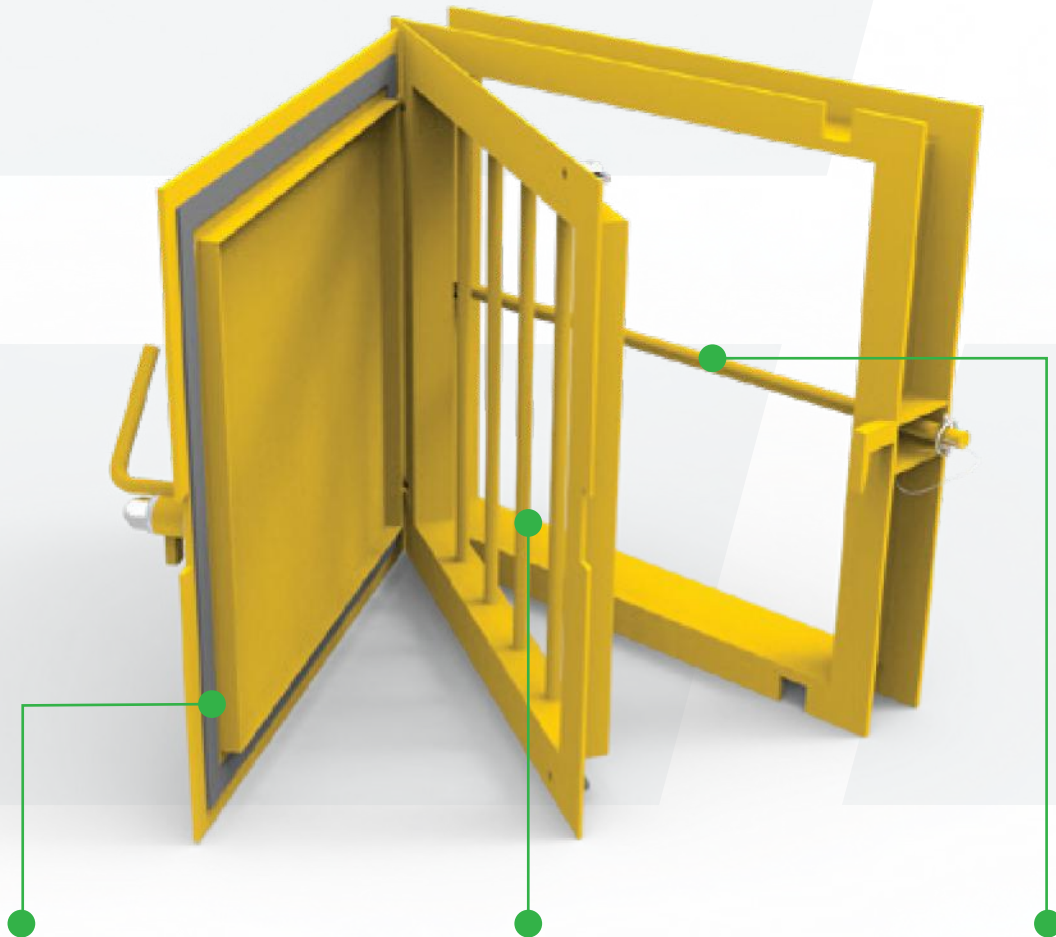
If you have a problem on-site, get in contact with the team and we will provide you with the certified salutation that you need.

“**OUR TEAM PARTNERS WITH EACH OTHER INTERNALLY SO WE CAN PARTNER WITH YOU AND YOUR SUCCESS.**”

## ACCESS AND INSPECTION DOORS

### THE THREE-LEVEL SAFETY SYSTEM FOR CHUTE DOORS

A three-level safety access system protects staff and keeps operations up and running. This system consists of three parts: the outer door, the second door and a cross bar protection system on the inside of the doors to prevent the door from being opened without a tool.



#### 1st level of safety

The inside of the outer door is fitted with a rubber seal to reduce noise, vibration and dust from escaping the chute. When an operator opens this outer door, the operator is able to view the internal mechanisms of the chute but cannot access the chute due to the second door.

#### 2nd level of safety

The second door is similar to a jail bar door which gives operators the ability to view the areas of hazard or concern without allowing them the ability to access the chute. A fixed bolt system included for additional protection and to prevent the door from being opened without a tool. The operator could now perform routine inspection or maintenance tasks without the risk associated with having free access to the chute when no second door is fitted.

#### 3rd level of safety

The third level of protection is a cross bar protection system on the inside of the doors, to prevent any personnel accessing the chute. This final fail safe mechanism is the last line of a very good defence against workplace accidents involving chute doors.

# ACCESS AND INSPECTION DOORS



**JAIL BAR DOOR  
450MM X 450MM**  
Part No. 5000045



- CONSTRUCTION**
- Heavy-duty steel
  - WLL: Painted Y14 Golden Yellow
  - Height: 450mm
  - Width: 450mm
  - Available off-the-shelf

**JAIL BAR DOOR  
600MM X 600MM**  
Part No. 5000040



- CONSTRUCTION**
- Heavy-duty steel
  - WLL: Y14 Golden Yellow and Galvanised Door
  - Height: 600mm
  - Width: 600mm
  - Available off-the-shelf

# ACCESS AND INSPECTION DOORS

**JAIL BAR DOUBLE DOOR  
TOP 1000MM X 450MM**  
Part No. 5000107



**CONSTRUCTION**

- Heavy-duty steel
- WLL: Painted Y14 Golden Yellow
- Height: 1000mm
- Width: 450mm
- Available off-the-shelf

**JAIL BAR DOOR  
1200MM X 600MM**  
Part No. 5000109



**CONSTRUCTION**

- Heavy-duty steel
- WLL: Painted Y14 Golden Yellow
- Height: 1200mm
- Width: 600mm
- Available off-the-shelf

**JAIL BAR DOUBLE DOOR  
SQUARE 750MM X 750MM**  
Part No. 5000108



**CONSTRUCTION**

- Heavy-duty steel
- WLL: Painted Y14 Golden Yellow
- Height: 750mm
- Width: 750mm
- Available off-the-shelf

**JAIL BAR DOUBLE DOOR  
1000MM X 750MM**  
Part No. 5000114



**CONSTRUCTION**

- Heavy-duty steel
- WLL: Painted Y14 Golden Yellow
- Height: 1000mm
- Width: 750mm
- Available off-the-shelf

## **ACCESS AND INSPECTION DOORS**

We also have a custom door service which can incorporate the features shown in the below range. If you have a custom access and inspection point or special construction and performance requirements we can design, engineer and fabricate a door to suit.

### **MESH MACHINE GUARDING DOOR** Part No. 5001844



#### **CONSTRUCTION**

- Heavy-duty steel
- WLL: Painted Y14 Golden Yellow
- Height: 950mm
- Width: 600mm
- Available off-the-shelf

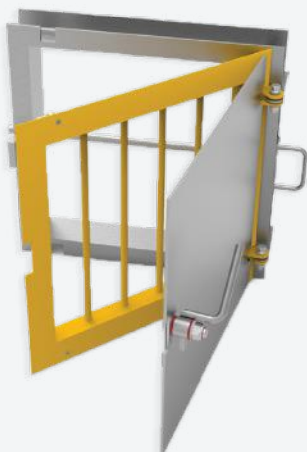
### **ARMOUR DOOR - HIGH IMPACT & ABRASION DOORS** Part No. 5501553



#### **CONSTRUCTION**

- Heavy-duty steel
- WLL: Painted Y14 Golden Yellow
- Height: 1000mm
- Width: 750mm
- Available off-the-shelf

### **JAIL BAR DOOR – GALVANISED** 600MM X 600MM Part No. 5000181



#### **CONSTRUCTION**

- Heavy-duty steel
- WLL: Painted Y14 Golden Yellow
- Height: 600mm
- Width: 600mm
- Available off-the-shelf

**“ WE CAN DESIGN, ENGINEER AND FABRICATE DOORS FOR ANY ACCESS AND INSPECTION POINT ”**

## SCAFFOLD REPLACEMENT PLATFORMS

We have a range of certified and Australian Standard compliant access and scaffold replacement solutions developed for specific scenarios on-site. Our experience developing solutions, coupled with the ability to 3D scan, design, engineer and construct access solutions means we can customise an access or scaffold replacement platform for your exact requirements.

### CRUSHER ACCESS PLATFORM – BELT FEEDER Part No. 5501476

#### CONSTRUCTION

- Heavy-duty aluminium
- Safety handrails
- Step style ladder access
- Counterweighted to provide a safe overhang -2.3m clearance
- Heavy duty castor wheels for easy mobility



### CRUSHER ACCESS PLATFORM Part No. 5501477

#### CONSTRUCTION

- Heavy-duty aluminium
- Access platform with overhang – 3m clearance
- Safety handrails
- Step type ladder access
- Counterweight for overhang
- Heavy duty castor wheels





# FIXED PLANT PLATFORMS

# FIXED PLANT PLATFORMS

## CRUSHER BOWL ACCESS PLATFORM

Part No. 5501474

A safe, certified and compliant access platform designed and engineered to access the crusher bowl

### CONSTRUCTION

- Heavy-duty aluminium
- Fitted jacking stands
- Drop in ladder on other side
- Fork pockets for easy mobility
- Stair access up to top of crusher externally



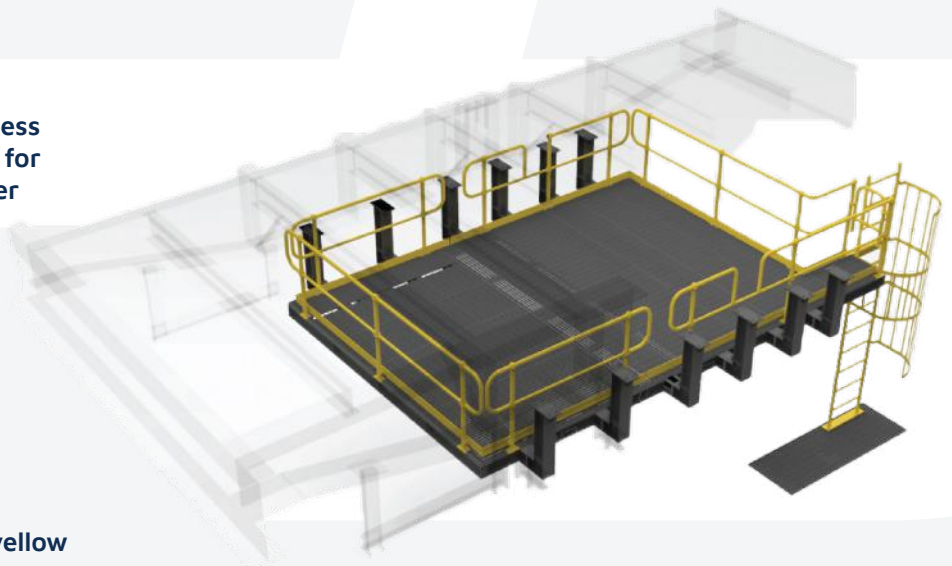
## CRUSHING MAINTENANCE FLOOR PLATFORM

Part No. 5501944

A safe, certified and compliant access platform designed and engineered for maintenance on the secondary sizer

### CONSTRUCTION

- Heavy-duty steel
- Ladder access with cage
- Full assembly bolts together for ease of transport
- Handrails around crushing hub maintenance floor
- Grating and platform structure completely hot dip galvanised
- Handrails finished in Y14 safety yellow
- Bolts to existing plant structure



# FIXED PLANT PLATFORMS

## STEEL BALL MILL PLATFORM

Part No. 5501779

Designed and engineered to safely and efficiently access steel ball mills.

### CONSTRUCTION

- Heavy-duty aluminium
- Increased height handrails
- Non-slip step nosings
- Heavy-duty non-slip step and platform landings



## CHUTE ACCESS PLATFORM

Part No. 5501630

A certified and compliant access platform designed and engineered for the access of the Mill Grizzly Chutes

### CONSTRUCTION

- Heavy-duty aluminium
- Double self-closing doors
- Safety handrails
- German made Blicke castor wheels
- Certified and compliant with Australian Standards



## TERTIARY CRUSHING ROCK BOX ACCESS

Part No. 5501789

Designed and engineered to safely and efficiently access crusher rock boxes.

### CONSTRUCTION

- Heavy-duty aluminium
- Fitted with heavy-duty castors
- Fitted with non-slip step nosing's
- Certified and compliant with Australian Standards



# FIXED PLANT PLATFORMS

## TERTIARY CRUSHING HEAD CHUTE PLATFORM

Part No. 5501746

A designed and engineered tertiary crushing head chute platform for safe and efficient maintenance.

### CONSTRUCTION

- Heavy-duty aluminium
- Height: 1880mm
- Length: 2700mm
- Width: 6000mm
- Can be customised to suit your requirements
- Non-slip walkway
- Self-closing gates



## FIXED PLANT CANTILEVER PLATFORM

Part No. 5501333

Fixed plant cantilever platform designed and engineered for safe, efficient and easy maintenance.

### CONSTRUCTION

- Heavy-duty steel
- Length: 6150mm
- Width: 3000mm
- Hot-dip galvanised
- Handrails finished in Y14 safety yellow
- Certified and compliant with Australian Standards



## CIRCULAR PLATFORM FOR CRUSHER BOWL ACCESS

Part No. 5501329

Crusher bowl access platform designed and engineered for safe, efficient and easy maintenance.

### CONSTRUCTION

- Heavy-duty aluminium
- WLL 150kg
- Height: 1815mm
- Fitted with lifting lugs
- Certified and compliant with Australian Standards



# FIXED PLANT PLATFORMS

## CONE CRUSHER ACCESS PLATFORM Part No. 5501188

Cone crusher access platform designed and engineered for safe, efficient and easy maintenance.

### CONSTRUCTION

- Heavy-duty aluminium
- Certified and compliant with Australian Standard
- Fitted with heavy-duty lockable castors
- Fitted with heavy-duty jacking stands

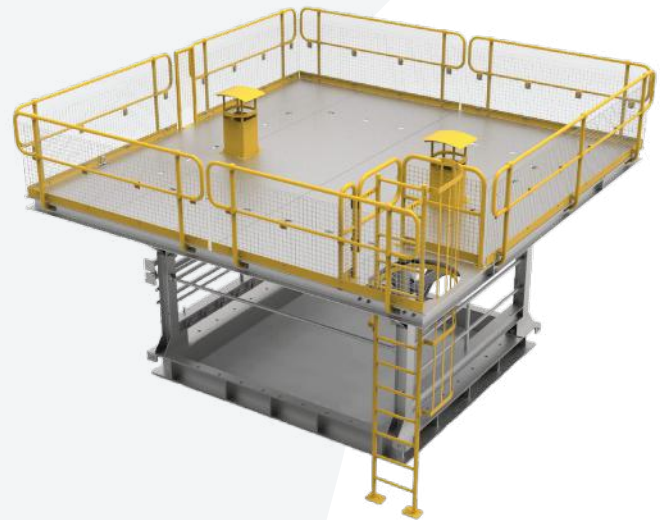


## PRIMARY CRUSHER WORK PLATFORM Part No. 5503196

Primary crusher maintenance platform designed and engineered for safe and efficient fixed plant maintenance.

### CONSTRUCTION

- Heavy-duty steel
- Fitted with handrails
- Fitted with cable shafts
- Fitted with access ladder



# FIXED PLANT PLATFORMS

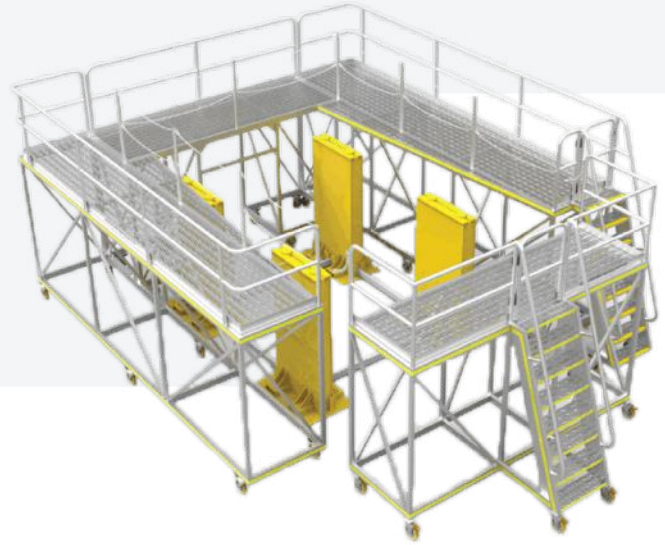
## VIBE FEEDER ACCESS AND SUPPORT SET

Part No. 5501113

Designed to provide support of vibe screen when out of screen house for shut down. The screen can sit flat and platforms provide full protection from working at heights at all times.

### CONSTRUCTION

- Heavy-duty aluminium
- Large industrial castors and levelling jacks
- Non-slip stairway and work area
- Self-closing gates
- Safety handrails



## STACKER MAINTENANCE PLATFORM AND CRADLE

Part No. 5501544

A safe, certified and compliant maintenance cradle bay platform designed and engineered for stacker maintenance

### CONSTRUCTION

- Heavy-duty steel
- Cyclone tie downs
- Dual parallel stairways
- Self-closing doors at top of deck
- Permanent structure – bolted down to concrete blocks
- Safety handrails bolt to structure



## WALKWAY SHEDDER

Part No. 5501269

Designed to handle the elements within a higher than average risk of overhanging hazards.

### CONSTRUCTION

- Cyclone Rated to Region "C"
- Fully Modular design and flat packed for transport
- Concrete blocks supplied with fork slots and lifting points



# FIXED PLANT PLATFORMS

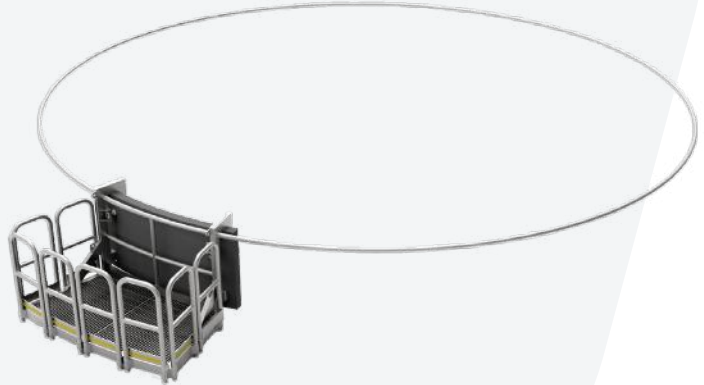
## OVERHANG PLATFORM

Part No. 5001997

Certified and compliant access platform designed and engineered to overhang the side of tanks on-site. Can be customised to suit your requirements.

### CONSTRUCTION

- Heavy-duty aluminium
- Non-slip stairway and work area
- Locking bolts with rubber
- Lanyard Points
- Stabilising legs with rubber



## SCREEN ACCESS PLATFORM

Part No. 5501802

Designed and engineered, safe and efficient screen access platform.

### CONSTRUCTION

- Heavy-duty aluminium
- Height: 2300mm
- Length: 2173mm
- Width: 750mm
- Fitted with heavy-duty castors
- Fitted with jacking stands
- Fitted with self-closing gate



## SCREEN ACCESS PLATFORM

Part No. 5501718

A designed and engineered screen access platform for safe and efficient maintenance.

### CONSTRUCTION

- Heavy-duty aluminium
- Height: 2400mm
- Length: 7500mm
- Width: 1100mm
- Non-slip walkway
- Self-closing gates
- Can be customised to suit other mobile equipment



# FIXED PLANT PLATFORMS

## GENERAL PURPOSE CRUSHER ACCESS PLATFORMS

Part No. 5001972

A safe, certified and compliant access platform designed and engineered for your various access requirements, where there are existing structures.

### CONSTRUCTION

- Heavy-duty aluminium
- WLL: 200kg
- Fitted with non-slip step nosings
- Fitted with ladder extensions
- Fitted with self-closing gate



## TRENCH ACCESS PLATFORM AND LADDER

Part No. 5502991

Designed and engineered solution to providing safe and efficient access to trenches. Simply place the platform over the trench and fold the ladder down.

### CONSTRUCTION

- Heavy-duty aluminium
- WLL: 400kg
- Height: 1850mm
- Hinged ladder to allow for varying trench depths
- Fitted with self-closing gate
- Non-slip grating deck



## STEEL CHUTE ACCESS PLATFORM

Part No. 5001995

Certified and compliant access platform designed and engineered for chute access.

### CONSTRUCTION

- Heavy-duty steel
- Bolt-on handrails
- Bolt-in step treads
- Fitted with non-slip nosings
- Grating and treads hot dip galvanised



# FIXED PLANT PLATFORMS

## STEEL CHUTE ACCESS PLATFORM V2

Part No. 5001990

Certified and compliant access platform designed and engineered for chute access.

### CONSTRUCTION

- Heavy-duty aluminium
- Bolt-on handrails
- Bolt-in step treads
- Fitted with lifting lugs
- Fitted with non-slip nosings
- Grating and treads hot dip galvanised



## RECLAIMER CURTAIN ACCESS PLATFORM

Part No. 5002001

Our aluminium Reclaimer Curtain Access Platforms are used in the inspection, refurbishment or replacement of rubber curtains on reclaimers in iron ore stock yards.

### CONSTRUCTION

- Heavy-duty aluminium
- Height: 850mm
- Length: 2800mm
- Width: 2000mm
- Self-closing gate and safety handrails
- Wheels for ease of manoeuvrability on site



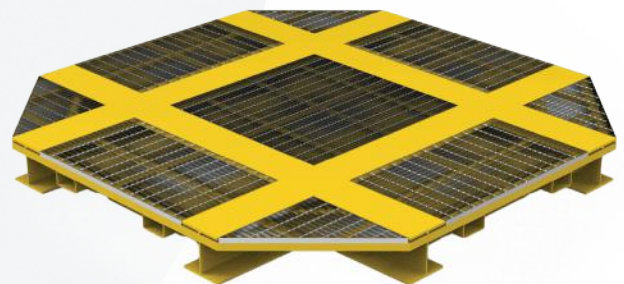
## CRUSHER BOWL AND CONE SUPPORT PLATFORM

Part No. 5501397

A safe, certified and compliant maintenance cradle bay platform designed and engineered for stacker maintenance

### CONSTRUCTION

- Heavy-duty steel
- WLL: 40 Tonne
- Ventilation holes in base
- Removable aluminium grating in centre
- Steel grating fixed, all sides



# FIXED PLANT PLATFORMS

## MILL GRIZZLY CHUTE ACCESS PLATFORM

Part No. 5501909

A safe, certified and compliant access platform designed and engineered for chute access.

### CONSTRUCTION

- Heavy-duty aluminium
- Non-slip stairway and work area
- Self-closing gate at the top of the stairs
- A total of 8 wheels – 4 on the horizontal and 4 on the vertical plane



## LOWER HOPPER ACCESS PLATFORM

Part No. 5501810

Designed and engineered to safely and efficiently access the lower hopper in fixed plant operations.

### CONSTRUCTION

- Heavy-duty aluminium
- Non-slip stairway and work area
- Self-closing gate
- Fitted with heavy-duty castors
- Fitted with heavy-duty jacking stands
- Certified and compliant with Australian Standards



## RECLAIMER BUCKET ACCESS PLATFORM

Part No. 5501842

Designed and engineered, safe and efficient reclaimer bucket access platform.

### CONSTRUCTION

- Heavy-duty aluminium
- Fitted with self-closing gates
- Fitted with heavy-duty castors
- Fitted with counterweights
- Fitted with jacking stands



# FIXED PLANT PLATFORMS

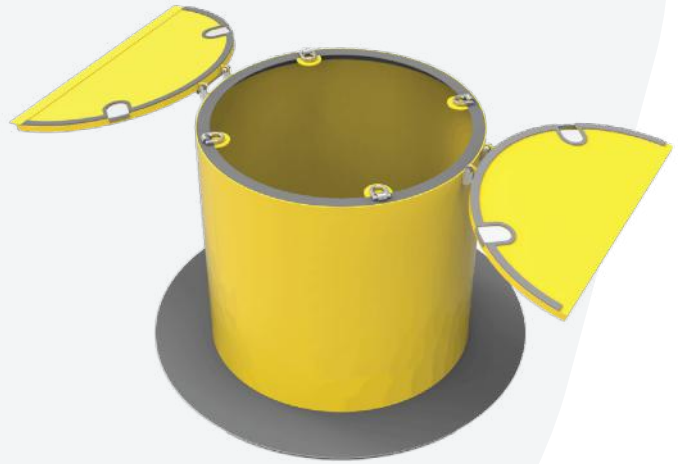
## CENTRE SHAFT PROTECTION AND ACCESS

Part No. 5001979

Certified and compliant shaft protection and access platform. Designed and engineered for safe maintenance.

### CONSTRUCTION

- Heavy-duty steel
- Finished in Y14 safety yellow
- Fitted with maintenance platform



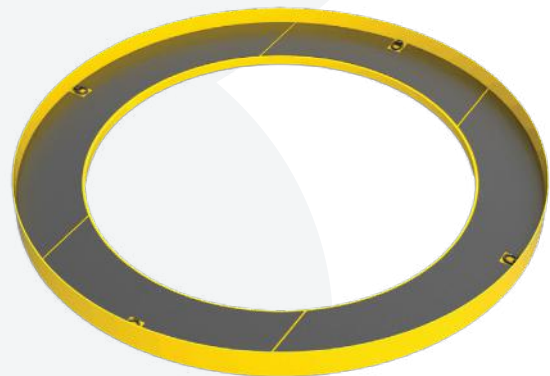
## LOWER CRUSHER ROUND ACCESS PLATFORM

Part No. 5001980

Designed and engineered crusher access platform. This item can be customized to suit many different applications, such as crusher access.

### CONSTRUCTION

- Heavy-duty steel
- Height: 250mm
- Length: 2630mm
- Width: 2630mm
- Blasted, primed and coated
- Checkplate walkway
- Fitted with lifting lugs



## TOP CRUSHER ROUND ACCESS PLATFORM

Part No. 5001981

Designed and engineered crusher access platform. This item can be customized to suit many different applications, such as crusher access.

### CONSTRUCTION

- Heavy-duty steel
- Height: 2500mm
- Length: 2630mm
- Width: 2630mm
- Blasted, primed and coated
- Checkplate walkway
- Fitted with lifting lugs



# FIXED PLANT PLATFORMS

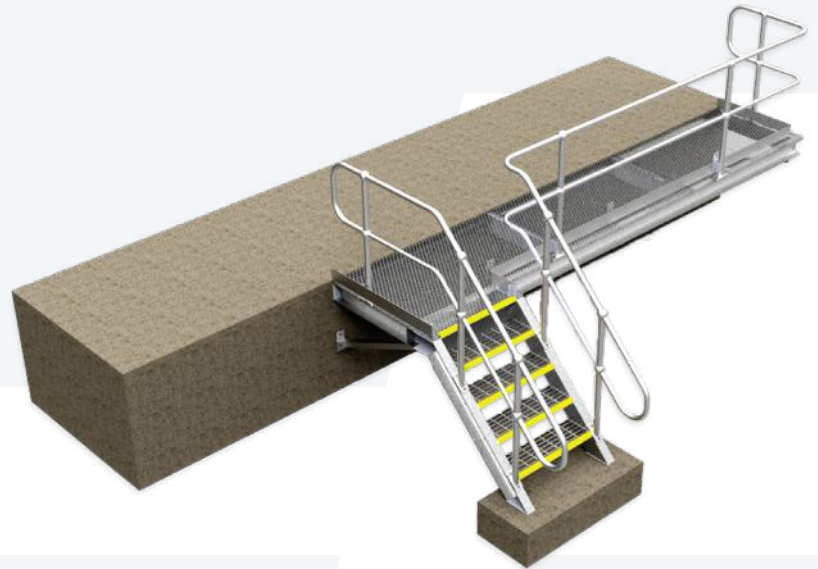
## CUSTOM HAND RAILING AND PLATFORMS

Part No. TBA

Our Custom Hand Railing and Platforms include customised design, engineering and fabrication of handrails, stairways and platforms for mobile and fixed plant applications.

### CONSTRUCTION

- Heavy-duty steel, aluminium or stainless steel
- Modular style build hand railing for ease of transport and installation
- Detailed drawings available for client



## PERMANENT ACCESS STAIRS

Part No. 5414051

Bend-tech's lightweight aluminum Access Stairs are used for permanent access to tanks, buildings or other structures.

### CONSTRUCTION

- Heavy-duty aluminium
- Height: 1300mm
- Length: 1370mm
- Width: 900mm
- Safety handrails
- Extended height handrails



“ **CERTIFIED AND COMPLIANT**  
**SCAFFOLD ELIMINATION**  
**AND ACCESS PLATFORMS** ”

# FIXED PLANT PLATFORMS

## BELT SPLICING WALKWAY Part No. 5414115

Our Aluminium Access walkway is used on reclaimers and stackers to provide safe access to belt splicing tables and associated work areas.

### CONSTRUCTION

- Heavy-duty aluminium
- Modular design and build to ensure ease of use and installation
- Non-slip stairways and grating
- Removable handrails



## RECLAIMER BEARING ACCESS PLATFORM Part No. 5414116

Our Aluminium Reclaimer Bearing Access Platform provides the ability to access and inspect reclaimer bearings easily and quickly during shutdown.

### CONSTRUCTION

- Heavy-duty aluminium
- Non-slip grating and work area
- Large industrial castors and levelling jacks
- Removable handrails for ease of access to work area when required



# CONVEYOR PLATFORMS

## LOWER CONVEYOR ACCESS PLATFORM

Part No. 5413064

Our Aluminium Lower Conveyor Access Platform provides safe access to the underneath of conveyors when idlers need to be inspected or changed out. The platform features foldout handrails to provide fall protection for site personnel when in use, and is installed by a forklift or telehandler.

### CONSTRUCTION

- Heavy-duty aluminium
- Weather resistant
- Safety liner



## BELT SPLICING ACCESS PLATFORM

Part No. 5001991

Certified and compliant belt splicing platform designed and engineered to safely access conveyors when performing maintenance.

### CONSTRUCTION

- Heavy-duty aluminium
- Height: 3050mm
- Length: 5215mm
- Width: 1200mm
- Ladder Access
- Self-closing gate
- Safety handrails
- Gridmesh deck for non-slip work area





# GENERAL PURPOSE PLATFORMS

# GENERAL PURPOSE PLATFORMS

## ACCESS PLATFORM 430MM

Part No. 5502890



### CONSTRUCTION

- Heavy-duty aluminium
- Length: 750mm
- Width: 850mm
- Safety handrails
- Self-closing gates
- Non-slip stairway and work area

## ACCESS STEP PLATFORM 500MM

Part No. 5504040



### CONSTRUCTION

- Heavy-duty aluminium
- WLL: 150kg
- Length: 850mm
- Width: 650mm
- Safety handrails
- Boom rail
- Non-slip stairway and work area

## ACCESS PLATFORM 500MM

Part No. 5502630



### CONSTRUCTION

- Heavy-duty aluminium
- WLL: 150kg
- Length: 2000mm
- Width: 500mm
- Safety handrails
- Fitted with a Boom Rail
- Non-slip stairway and work area

## ACCESS PLATFORM 700MM

Part No. 5502631



### CONSTRUCTION

- Heavy-duty aluminium
- WLL: 150kg
- Length: 2000mm
- Width: 500mm
- Safety handrails
- Fitted with a Boom Rail
- Non-slip stairway and work area

# GENERAL PURPOSE PLATFORMS

## ACCESS STEP PLATFORM 800MM

Part No. 5504041



### CONSTRUCTION

- Heavy-duty aluminium
- WLL: 150kg
- Length: 1200mm
- Width: 650mm
- Safety handrails
- Boom rail
- Non-slip stairway and work area

## ACCESS PLATFORM 1100MM

Part No. 5503138



### CONSTRUCTION

- Heavy-duty aluminium
- WLL: 200kg
- Length: 1191mm
- Width: 850mm
- Safety handrails
- Boom rail
- Non-slip stairway and work area

## ACCESS PLATFORM 1200MM

Part No. 5412174



### CONSTRUCTION

- Heavy-duty aluminium
- Length: 1100mm
- Width: 1000mm
- Self-levelling jacks
- Self-closing gate and safety handrails
- Non-slip stairway and work area

## ACCESS PLATFORM 1400MM

Part No. 5401235



### CONSTRUCTION

- Heavy-duty aluminium
- Length: 2783mm
- Width: 900mm
- Self-levelling jacks
- Self-closing gate
- Safety handrails
- Non-slip stairway and work area

# GENERAL PURPOSE PLATFORMS

## DOOR ACCESS PLATFORM 1500MM

Part No. 5501803



### CONSTRUCTION

- Heavy-duty aluminium
- Length: 1100mm
- Width: 800mm
- Fitted with removable handrails
- Fitted with self-closing gates
- Fitted with Heavy-duty castors

## ACCESS PLATFORM 1600MM

Part No. 5401183



### CONSTRUCTION

- Heavy-duty aluminium
- Length: 824mm
- Width: 780mm
- Self-closing gate
- Safety handrails
- Non-slip stairway and work area

## ACCESS PLATFORM WITH OVERHANG 1600MM

Part No. 5001982



### CONSTRUCTION

- Heavy-duty aluminium
- WLL: 150kg
- Drop-in type boom rail
- Non-Slip Gridmesh Decking
- Lifting lugs included for easy lifting
- SWL markings attached to platform
- Counterweights included for stability

## ACCESS PLATFORM 1700MM

Part No. 5414112



### CONSTRUCTION

- Heavy-duty aluminium
- Length: 1200mm
- Width: 950mm
- Self-levelling jacks
- Self-closing gate
- Safety handrails
- Non-slip stairway and work area

# GENERAL PURPOSE PLATFORMS

## ACCESS PLATFORM 1800MM

Part No. 5502287



### CONSTRUCTION

- Heavy-duty aluminium
- WLL: 250kg
- Self-closing gates
- Fitted with leveling jacks
- Fitted with forklift slots and wheels
- Non-slip serrated grating stairway and work area

## ACCESS PLATFORM 1850MM

Part No. 5414025



### CONSTRUCTION

- Heavy-duty aluminium
- Length: 2000mm
- Width: 1200mm
- Safety handrails
- Non-slip stairway and work area

## ACCESS PLATFORM 1900MM

Part No. 5412036



### CONSTRUCTION

- Heavy-duty aluminium
- Length: 3903mm
- Width: 1000mm
- Self-levelling jacks
- Self-closing gate and safety handrails
- Non-slip stairway and work area

## ACCESS PLATFORM 2200MM

Part No. 5412038



### CONSTRUCTION

- Heavy-duty aluminium
- Length: 4003mm
- Width: 1100mm
- Self-levelling jacks
- Self-closing gate and safety handrails
- Non-slip stairway and work area

## GENERAL PURPOSE PLATFORMS

### ACCESS PLATFORM 2400MM

Part No. 5502756



#### CONSTRUCTION

- Heavy-duty aluminium
- WLL: 150kg
- Length: 2062mm
- Width: 1276mm
- Boom rail
- Non-slip stairway and work area

### ACCESS PLATFORM 2500MM

Part No. 5401237



#### CONSTRUCTION

- Heavy-duty aluminium
- Length: 4480mm
- Width: 1200mm
- Self-levelling jacks
- Self-closing gate and safety handrails
- Non-slip stairway and work area

“ **MAKING MAINTENANCE  
ON-SITE SAFE, EFFICIENT  
AND EASY** ”



# CONVEYOR PRODUCTS

# CONVEYOR PRODUCTS

Our range of certified conveyor products, parts and solutions is aimed at delivering your site or plant with maintenance solutions that transform safety and streamline processes.

We stock certain parts such as conveyor puller plates and bull noses on the shelf ready for immediate despatch.

We also have a range of spreader bars, racks, support frames and ladders which can be fabricated to your requirements.

## CONVEYOR BELT PULLER CLAMP KIT – 6 TONNE

Part No. 5000227



### CONSTRUCTION

- WLL: 6 Tonne
- 1x Plate
- Pin assembly
- Countersunk bolts, washers and nuts

## CONVEYOR BELT PULLER CLAMP KIT – 9 TONNE

Part No. 5300037

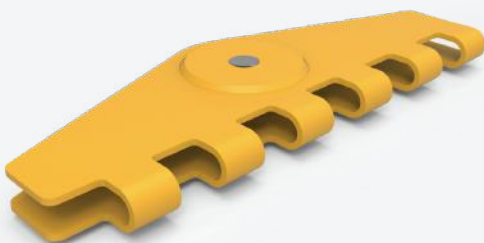


### CONSTRUCTION

- WLL: 9 Tonne
- 1x Plate
- Pin assembly
- Countersunk bolts, washers and nuts

## CONVEYOR CLAMP ASSEMBLY BULL NOSE PULLER PLATE – 9 TONNE

Part No. 5300035



### CONSTRUCTION

- WLL: 9 Tonne
- 1x Bull-nose plate
- Pin Assembly

“OUR RANGE OF  
PULLER PLATES  
ARE STOCKED  
FOR IMMEDIATE  
DESPATCH”

# CONVEYOR PRODUCTS

## CONVEYOR BELT LIFTER SPREADER BAR

Part No. 5501321



### CONSTRUCTION

- Designed for lifting conveyor belts
- Rollers included for ease of lifting
- Various sizes and SWL available

## CONVEYOR IDLER STORAGE AND LIFTING RACK

Part No. 5000223

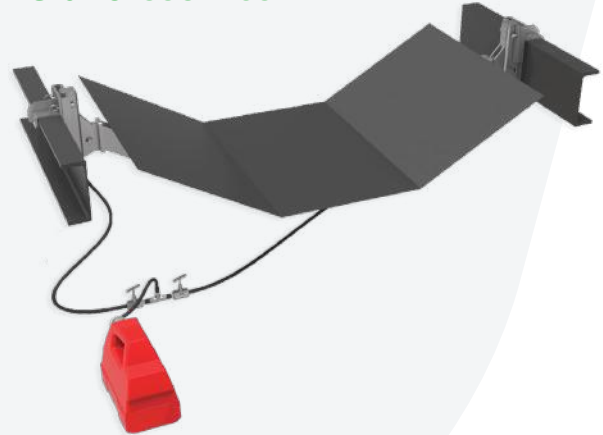


### CONSTRUCTION

- Fold over locking shroud
- Lifting points and forklift slots for transportation
- We are able to accommodate up to 24 idlers of different sizes and weights.

## HYDRAULIC CONVEYOR BELT LIFTER

Part No. 5502465

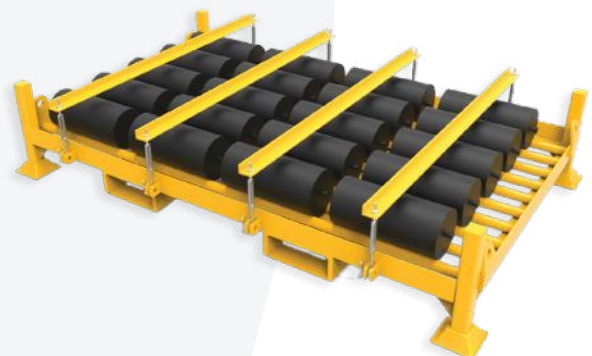


### CONSTRUCTION

- Heavy-duty steel and aluminium
- Electronic hydraulic pump included
- Lightweight and easy to handle
- Various designs available for different belt widths and angles

## CONVEYOR IDLER STORAGE AND TRANSPORT PALLET

Part No. 5000217



### CONSTRUCTION

- Forklift friendly
- Fitted with lifting lugs for easy mobility
- Able to accommodate up to 20 different idlers of various diameters and lengths

# CONVEYOR PRODUCTS

## ALUMINIUM BELT LIFTING SPREADER BAR 1500MM

Part No. 5000235



### CONSTRUCTION

- Heavy-duty T6 aluminium
- Height: 128mm
- Engineered tough
- Lightweight
- Certified and compliant with Australian Standards – SWL 1 TONNE

## ALUMINIUM BELT LIFTING SPREADER BAR 1800MM

Part No. 5000234

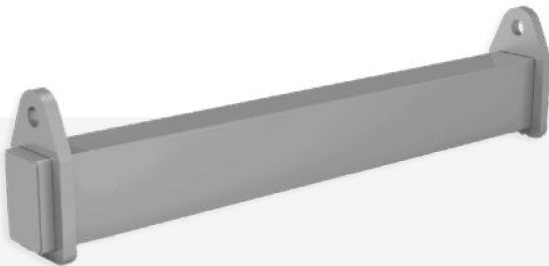


### CONSTRUCTION

- Heavy-duty T6 aluminium
- Height: 155mm
- Engineered tough
- Lightweight
- Certified and compliant with Australian Standards – SWL 1 TONNE

## ALUMINIUM BELT LIFTER SPREADER BAR 1850MM

Part No. 5502263

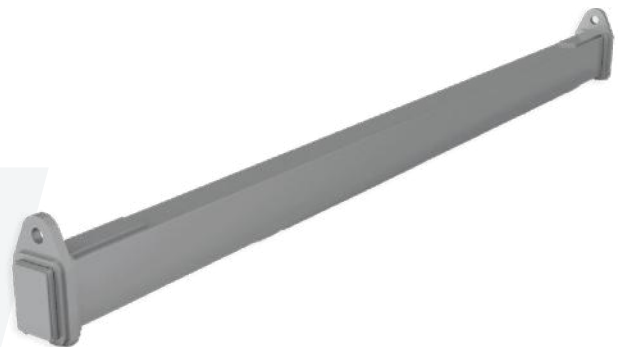


### CONSTRUCTION

- Heavy-duty T6 aluminium
- WLL: 2 Tonne
- Height: 285mm
- Length: 1955mm
- Width: 155mm
- Engineered tough

## 3000MM ALUMINIUM SPREADER BAR

Part No. 5502431



### CONSTRUCTION

- Heavy-duty T6 aluminium
- WLL: 2 Tonne
- Height: 285mm
- Length: 3110mm
- Width: 155mm
- Engineered lightweight and tough
- Raw finish



# WORKSHOP TRESTLES

# WORKSHOP TRESTLES

## 2 TONNE TRESTLE STAND 1000MM (L) X 900MM (H)

Part No. 5001747



### CONSTRUCTION

- Heavy-duty steel
- Width: 660mm
- Replaceable top section
- Fully engineered and certified
- Stocked off-the-shelf, available for immediate delivery

## 5 TONNE TRESTLE STAND 1000MM (L) X 900MM (H)

Part No. 5001805



### CONSTRUCTION

- Heavy-duty steel
- Width: 660mm
- Replaceable top section
- Fully engineered and certified
- Stocked off-the-shelf, available for immediate delivery

## 2 TONNE TRESTLE 1000MM (L) X 500MM (H)

Part No. 5503752



### CONSTRUCTION

- Heavy-duty steel
- Width: 320mm
- Replaceable top section
- Fully engineered and certified
- Stocked off-the-shelf, available for immediate delivery

## 5 TONNE TRESTLE STAND 2400MM (L) X 900MM (H)

Part No. 5001760



### CONSTRUCTION

- Heavy-duty steel
- Width: 656mm
- Replaceable top section
- Fully engineered and certified
- Stocked off-the-shelf, available for immediate delivery

## WORKSHOP TRESTLES

### 10 TONNE TRESTLE STAND 2400MM (L) X 650MM (H)

Part No. 5001813



#### CONSTRUCTION

- Heavy-duty steel
- Width: 515mm
- Replaceable top section
- Fully engineered and certified
- Stocked off-the-shelf, available for immediate delivery

### 2 TONNE TRESTLE WITH WHEELS

Part No. 5503294



#### CONSTRUCTION

- Heavy-duty steel
- Width: 760mm
- Replaceable top section
- Fully engineered and certified
- Stocked off-the-shelf, available for immediate delivery

### 10 TONNE TRESTLE STAND 1200MM (L) X 1000MM (H)

Part No. 5504266

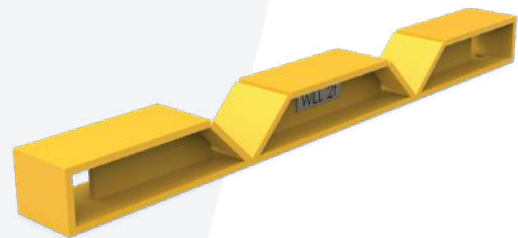


#### CONSTRUCTION

- Heavy-duty steel
- Replaceable top section
- Fully engineered and certified
- Stocked off-the-shelf, available for immediate delivery

### 2 TONNE TRESTLE REPLACEMENT TOP

Part No. 5503163



#### CONSTRUCTION

- Heavy-duty steel
- Height: 85mm
- Width: 100mm
- Length: 1000mm
- Bolts straight to the trestle
- Solution for stable and safer support of pipe

# WORKSHOP TRESTLES

## ADJUSTABLE TRESTLE 2T

Part No. 5502938



### CONSTRUCTION

- Heavy-duty steel
- Height: 700mm - 900mm
- Length: 1000mm
- Replaceable top section
- Height adjustable by 200mm via jacking stands
- Stocked off-the-shelf, available for immediate delivery

## ADJUSTABLE TRESTLE 5T

Part No. 5502940



### CONSTRUCTION

- Heavy-duty steel
- Height: 700mm - 900mm
- Length: 1000mm
- Replaceable top section
- Height adjustable by 200mm via jacking stands



# WORKSHOP BENCHES / CUTTING TABLES

# WORKSHOP BENCHES / CUTTING TABLES

## 2 TONNE WORKBENCH 900MM (H)

Part No. 5500766



### CONSTRUCTION

- Heavy-duty steel
- Certified and compliant with Australian Standards
- This item can be customised to meet your specific needs

## WORKBENCH 2 TONNE 1800MM (L) X 880MM (H)

Part No. 5504008



### CONSTRUCTION

- Heavy-duty steel
- Fitted with 12mm bench top
- Certified and compliant with Australian Standards

## WORK BENCH 1.5T

Part No. 5502217



### CONSTRUCTION

- Heavy-duty steel
- Length: 2500mm
- Width: 1200mm
- Height: 1000mm
- Finished in Y-14 safety yellow
- Certified and compliant with Australian Standards

## WORK BENCH WITH BACKBOARD

Part No. 5502194



### CONSTRUCTION

- Heavy-duty steel
- Length: 1800mm
- Width: 800mm
- Height: 900mm
- Customised to meet specific requirements
- Certified and compliant with Australian Standards

## WORKSHOP BENCHES / CUTTING TABLES

**WORK BENCH 5T**  
**2400MM (L) X 1200MM (W)**  
Part No. 5502201



**CONSTRUCTION**

- Heavy-duty steel
- Height: 900mm
- Fitted with adjustable feet
- Frame blasted, primed and painted red oxide, top unpainted

**HEAVY DUTY WORK BENCH**  
**3000MM X 2000MM**  
Part No. 5502331



**CONSTRUCTION**

- Heavy-duty steel
- Height: 965mm
- 25mm top
- Bottom shelf for storage
- OSHA high-visibility Bench Vice included
- Angle drain channel around edge with drain point

**HEAVY DUTY WORK BENCH**  
**2400 X 1200MM**  
Part No. 5502330



**CONSTRUCTION**

- Heavy-duty steel
- Height: 965mm
- 25mm top
- Bottom shelf for storage
- OSHA high-visibility Bench Vice included

**WORKBENCH WITH VICE 1 TONNE**  
Part No. 5503002



**CONSTRUCTION**

- Heavy-duty steel
- Length: 3000mm
- Includes Dawn 150mm Offset Standard Vice (Part no: 60181)
- Fitted with 10mm bench top

# WORKSHOP BENCHES / CUTTING TABLES

## WORK BENCH WITH ENCLOSED STORAGE

Part No. 5503297



### CONSTRUCTION

- Heavy-duty steel and hinges
- Length: 2500mm
- Width: 1270mm
- Height: 965mm
- Oil drain lip around perimeter with drain point
- Includes storage underneath with latched access doors

## HEAVY DUTY WORK BENCH 3000MM X 2000MM

Part No. 5504057



### CONSTRUCTION

- Heavy-duty steel and caster wheels
- Height: 965mm
- 25mm top
- Enclosed bottom shelf for storage
- Angle drain channel around edge with drain point

## HEAVY DUTY WORK BENCH 2400MM X 1500MM

Part No. 5503412



### CONSTRUCTION

- Heavy-duty steel
- Height: 965mm
- Bottom shelf for storage
- DAWN right hand offset bench vise included

## WELDING WORK BENCH 3000MM (L) X 1800MM (W)

Part No. 5504542



### CONSTRUCTION

- Heavy-duty steel with vice
- Height: 900mm
- 4x welding torch holsters
- Earth cable connection point

# WORKSHOP BENCHES / CUTTING TABLES

## TOOL STORAGE AND WORKBENCH

Part No. 5503327

### CONSTRUCTION

- Heavy-duty steel
- Length: 6500mm
- Width: 800mm
- Height: 2850mm
- LED lighting fitting at top
- 3x BAC storage modules
- 6x power outlets
- Large shadow boards
- Finished in heavy-duty Y-14 safety yellow



## MOBILE WORK BENCH WITH COVER

Part No. 5602050

### CONSTRUCTION

- Heavy-duty steel
- Length: 3600mm
- Height: 1100mm
- Certified and compliant with Australian Standards
- Heavy-duty German made lockable castors
- Heavy-duty mine spec construction
- Can be customised to meet specific needs



## CATERPILLAR 793F STEERING PUMP DRIVE WORK STAND AND BENCH

Part No. 5503047

### CONSTRUCTION

- Heavy-duty steel
- WLL: 600kg
- Length: 1600mm
- Width: 700mm
- Height: 1830mm
- Fitted with lifting lugs
- Fitted with forklift slots
- Finished in Y-14 safety yellow



# WORKSHOP BENCHES / CUTTING TABLES

## MOBILE FLAME CUTTING TABLE

Part No. 5501032



### CONSTRUCTION

- SWL: 1T
- Length: 1200mm
- Height: 900mm
- Replaceable support bars
- Heavy duty lockable wheels
- Safer slag collection and easy to empty slag bin

## ALUMINIUM HANDRAIL MOUNTED WORK BENCHES

Part No. 5504026



### CONSTRUCTION

- Heavy-duty aluminium
- SWL: 1T
- Length: 1000mm
- Width: 500mm
- Edging to stop items falling off
- Attaches securely to handrails

## HEAVY DUTY PLATE CUTTING TABLE

Part No. 5501163



### CONSTRUCTION

- SWL: 3T
- Length: 2830mm
- Height: 1000mm
- Replaceable support bars
- Heavy duty lockable wheels
- Safer slag collection and easy to empty slag bin

## WORKSHOP TROLLEY AND LOCK BOX

Part No. 5501443



### CONSTRUCTION

- Heavy-duty steel
- Certified and compliant with Australian Standards
- Fitted with lockable toolbox
- Fitted with heavy-duty castors



# WORKSHOP EFFICIENCY STATIONS

# WORKSHOP EFFICIENCY STATIONS

## E-HUB EFFICIENCY WORK STATION Part No. 5000030

### CONSTRUCTION

- Supervisors office to have visual and audible notification on receiver unit
- Wireless transmitter
- Phone Call function
- 40 inch screen
- Up to 12-16 units to network
- Transportable
- Robust pipe surrounds
- Powder-coated steel cabinet
- Dust proof cabinets and housing
- Large lockable castors
- Air-cooling system
- Anti-reflective laminated safety glass



## E-HUB EFFICIENCY WORK STATION MINI Part No. 5500866

### CONSTRUCTION

- 25-inch screen included
- Small whiteboard on front
- Flip-up whiteboard at rear
- 3x heavy duty document clips
- Transportable with handles
- Adequate storage shelving
- Storage for Tags
- Robust pipe surrounds
- Powder-coated steel cabinet
- Dust proof cabinets and housing
- Large lockable castors
- Plug and play



# WORKSHOP EFFICIENCY STATIONS

**WHITEBOARD BENCH WITH DRAWER**  
Part No. 5501318



**CONSTRUCTION**

- Heavy-duty steel
- Fitted with clear perspex on drawer to place drawings under
- Fitted with heavy-duty castors
- Can be customised to suit your requirements

**ALUMINIUM WORKSHOP BENCH 1220MM (H)**  
Part No. 5501874



**CONSTRUCTION**

- Heavy-duty aluminium
- Length: 1300mm
- Width: 700mm
- Height: 700mm
- Fitted with bottom shelf for storage
- Fitted with heavy-duty wheels for easy mobility

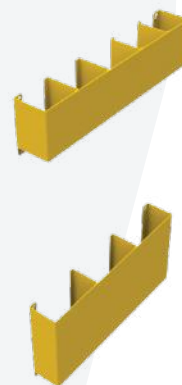
**WORKSHOP WHITEBOARD BENCH**  
Part No. 5001812



**CONSTRUCTION**

- Heavy-duty mine spec
- Length: 1480mm
- Width: 700mm
- Height: 2000mm
- Heavy duty castors for workshop mobility
- Can be used for shutdowns or planned maintenance

**WHITEBOARD BENCH COMPARTMENT KIT**  
Part No. 5000033



**CONSTRUCTION**

- Heavy-duty mine spec
- Length: 1480mm
- Width: 700mm
- Height: 1900mm
- Compartments kit for storing safety and lockout tags

# WORKSHOP STORAGE BENCHES

## RATED SERVICE WORKBENCH

Part No. 5503300



### CONSTRUCTION

- Heavy-duty steel
- WLL: 1T
- Length: 1500mm
- Width: 800mm
- Height: 1010mm
- 2x lockable doors
- Fitted with heavy-duty caster wheels

## TOOLBOX TROLLEY

Part No. 5501875



### CONSTRUCTION

- Length: 900mm
- Width: 670mm
- Height: 945mm
- Large industrial castors
- Lockable doors and drawers
- All drawers on heavy duty rollers
- Heavy-duty top bench for component servicing

## AIR CONDITIONING WORKBENCH

Part No. 5501062



### CONSTRUCTION

- Length: 904mm
- Width: 682mm
- Height: 959mm
- Large industrial castors
- Lockable doors and drawers
- All drawers on heavy duty rollers
- Heavy duty top bench for component servicing

## STORAGE WORK BENCH WITH VICE

Part No. 5504569



### CONSTRUCTION

- Heavy-duty steel
- WLL: 1T
- Length: 2700mm
- Width: 1050mm
- Height: 1075mm
- 5-drawer cabinet
- 2-door cabinet
- Heavy-duty vice

# WORKSHOP STORAGE CONTAINERS

## SPECIALISED TOOL BOX 1295MM X 1200MM

Part No. 5500903



### CONSTRUCTION

- Heavy-duty steel
- Height: 500mm
- Gas Struts for lid
- Key Lock
- Heavy Duty hydrocarbon resistant foam cut out
- Each Tool has a Specifically CNC routed cutout

## 793F TRAY REMOVAL TOOLING KIT

Part No. 5501445



### CONSTRUCTION

- Heavy-duty steel
- Height: 577mm
- Gas Struts for lid
- Key Lock
- Heavy Duty hydrocarbon resistant foam cut out
- Each Tool has a Specifically CNC routed cutout

## SPECIALISED TOOL BOX 1550MM X 900MM

Part No. 5501068



### CONSTRUCTION

- Heavy-duty steel
- Height: 535mm
- Gas Struts for lid
- Key Lock
- Heavy Duty hydrocarbon resistant foam cut out
- Each Tool has a Specifically CNC routed cutout

## SPECIALISED TOOL BOX 1750MM X 900MM

Part No. 5500957



### CONSTRUCTION

- Heavy-duty steel
- Height: 500mm
- Gas Struts for lid
- Key Lock
- Heavy Duty hydrocarbon resistant foam cut out
- Each Tool has a Specifically CNC routed cutout

# WORKSHOP STORAGE CONTAINERS

## SPECIALISED TOOLBOX WITH DRAWER

Part No. 5501871



### CONSTRUCTION

- Heavy-duty steel
- Height: 730mm
- Width: 790mm
- Gas Struts for lid
- Heavy Duty hydrocarbon resistant foam cut out
- Each Tool has a Specifically CNC routed cutout

## EPIROC D65 CLAMP STORAGE TOOLBOX

Part No. 5504044



### CONSTRUCTION

- Heavy-duty steel
- Height: 500mm
- Gas struts for lid
- Key lock with T handles
- Heavy-duty hydrocarbon resistant foam cut out
- Each tool has a specifically CNC routed cutout

## RATED LIFTING AND TRANSPORT BOX 2T

Part No. 5503167



### CONSTRUCTION

- Heavy-duty steel
- WLL: 2 Tonne
- Height: 600mm
- Width: 1200mm
- 'T' locking handles
- Gas strut lid

## RAG AND OIL SOAK BIN

Part No. 5502328



### CONSTRUCTION

- Heavy-duty steel
- Height: 965mm
- Width: 860mm
- Length: 1410mm
- Finished in Y-14 safety yellow

# WORKSHOP STORAGE CONTAINERS

## ALUMINIUM OIL TROLLEY

Part No. 5503434



### CONSTRUCTION

- Heavy-duty aluminium
- Oil Capacity: 545L
- Drain point at bottom with BSPT fitting
- Heavy-duty caster wheels
- Push handles at each end
- Grafting at top

## TRANSPORT BOXES

Part No. 5503054

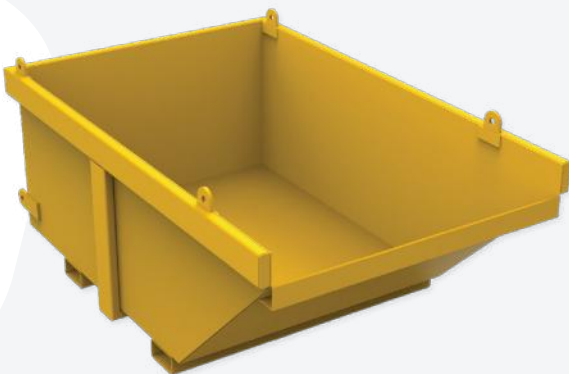


### CONSTRUCTION

- Heavy-duty steel
- WLL: 200kg
- Height: 460mm
- Fitted with lifting lugs
- ID tags
- Finished in Y-14 safety yellow

## 5T CRANE BIN

Part No. 5500970



### CONSTRUCTION

- Heavy-duty steel
- WLL: 5 Tonne
- Length: 2460mm
- Width: 1612mm
- Height: 1010mm

## GET BIN

Part No. 5000096



### CONSTRUCTION

- Heavy-duty steel
- Length: 1200mm
- Width: 1200mm
- Height: 425mm
- Stackable to maximise site space
- Different size and tonnage available

# WORKSHOP STORAGE CONTAINERS

## GET BIN 2400MM X 1200MM Part No. 5503151



### CONSTRUCTION

- Heavy-duty steel
- Length: 2400mm
- Width: 1200mm
- Height: 450mm
- Stackable to maximise site space
- Available in different size/tonnage

## RATED SERVICE WORKBENCH Part No. 5503300



### CONSTRUCTION

- Heavy-duty steel
- WLL: 1T
- Length: 1500mm
- Width: 800mm
- Height: 1010mm
- Fitted with heavy-duty caster wheels
- 2x lockable doors

## SPECIALISED FRONT ACCESS TOOLBOX Part No. 5501946



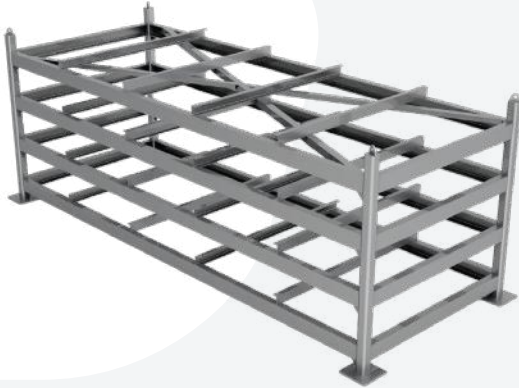
### CONSTRUCTION

- Heavy-duty steel
- Pins for tool positioning
- Labeled small parts bin with adjustable partitions
- Labeled double height bin with adjustable partitions

## WORKSHOP STORAGE RACKS

### FLAT PLATE STEEL STORAGE RACK - LONG

Part No. 5503197

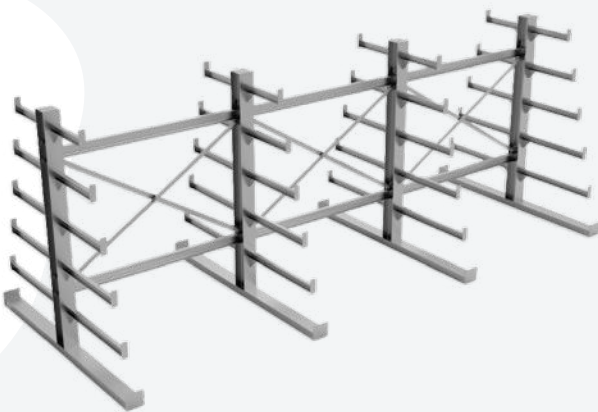


#### CONSTRUCTION

- Heavy-duty steel
- WLL: 4T per shelf
- Height: 2075mm
- Length: 5500mm
- Width: 2100mm
- 4 shelves with easy forklift access

### STEEL FREE STANDING STORAGE RACK

Part No. 5003285



#### CONSTRUCTION

- Heavy-duty steel
- SWL: 4.8 Tonne Capacity or 400kg per shelf
- Height: 2250mm
- Length: 6000mm
- Lifting eyes for ease of transport
- Forklift friendly for loading your product

### FLAT PLATE STEEL STORAGE RACK

Part No. 5500831

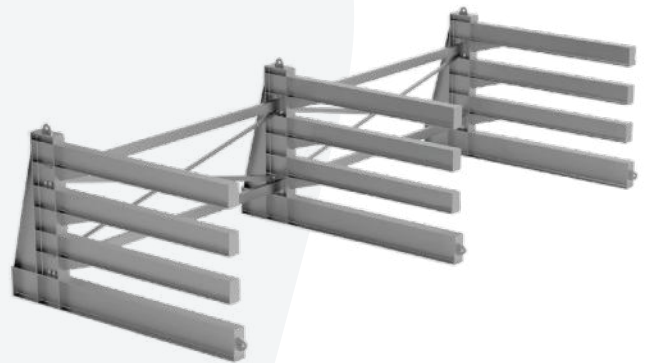


#### CONSTRUCTION

- Heavy-duty steel
- WLL: 12T
- Height: 3010mm
- Length: 4625mm
- Width: 2525mm
- 4 shelves with easy fork truck access
- Engineered and certified

### HORIZONTAL PLATE STORAGE RACK

Part No. 5000220



#### CONSTRUCTION

- Heavy-duty steel
- SWL: 6.5 Tonne per level (bottom level 10 Tonne)
- Height: 2004mm
- Length: 8000mm
- Forklift friendly for plate loading
- Cantilevered to ensure optimum space utilisation
- Modular design for ease of transport and erection on site

# WORKSHOP STORAGE RACKS

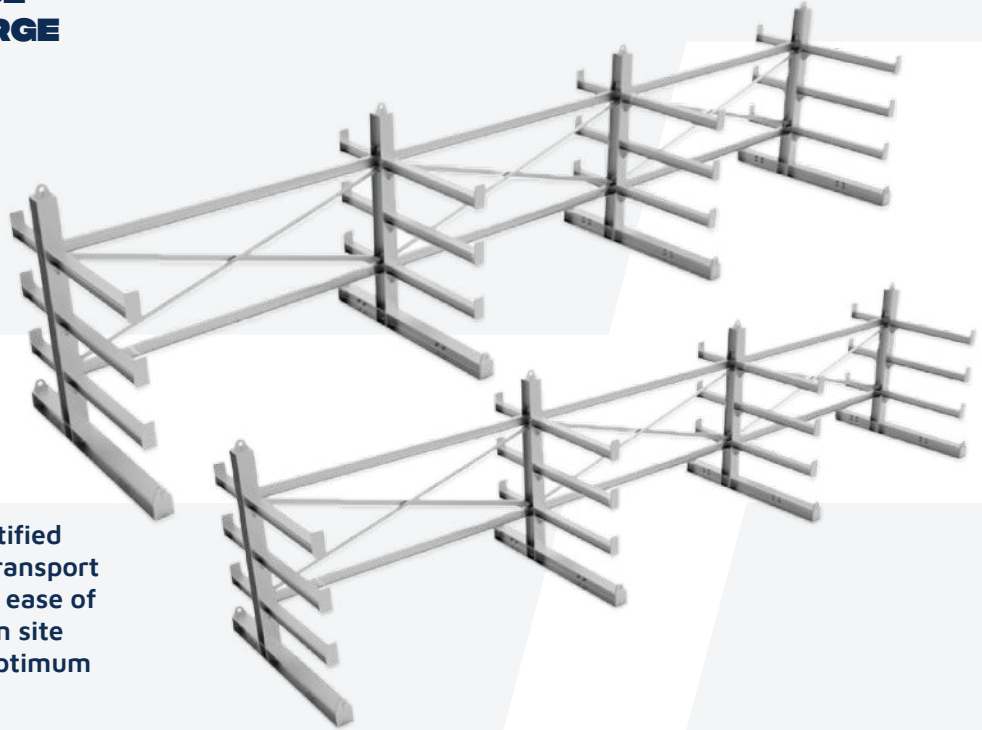
## GENERAL PURPOSE STEEL RACK – LARGE

Part No.

6m – 5000222

7.5m – 5000221

9m – 5000219

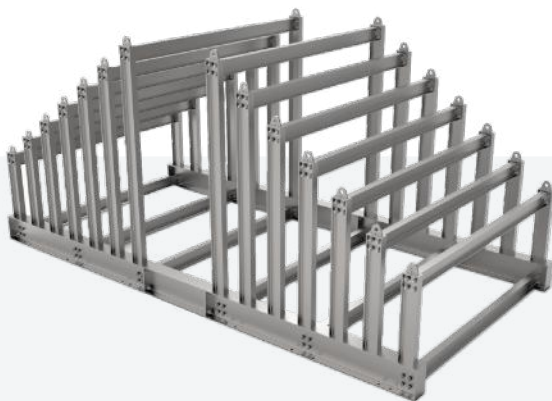


### CONSTRUCTION

- Heavy-duty steel
- SWL: 3 Tonne per shelf
- 8 shelves (4 either side)
- Fully engineered and certified
- Lifting eyes for ease of transport
- Modular construction for ease of transport and erection on site
- Cantilevered to ensure optimum space utilisation

## SLOPING VERTICAL STEEL PLATE RACK

Part No. 5501254

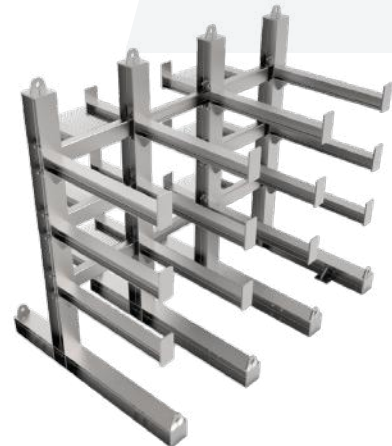


### CONSTRUCTION

- Heavy-duty steel
- WLL: 4.25T per bay
- Height: 2617mm
- Length: 5747mm
- Width: 2865mm
- Modular design and Lifting eyes for ease of transport

## GENERAL PURPOSE STEEL RACK – SMALL

Part No. 5501168



### CONSTRUCTION

- Heavy-duty steel
- WLL: 3T per level
- Height: 2144mm
- Length: 2500mm
- Width: 1852mm
- Modular design and Lifting eyes for ease of transport

## WORKSHOP STORAGE RACKS

### VERTICAL STORAGE RACK, STEEL PLATE

Part No. 5500758



#### CONSTRUCTION

- Heavy-duty steel
- WLL: 8.5T per bay (51T total)
- Height: 2617mm
- Length: 8175mm
- Width: 2423mm
- Modular design and Lifting eyes for ease of transport

### DRILL ROD RACK

Part No. 5501719



#### CONSTRUCTION

- Heavy-duty steel
- Height: 2525mm
- Length: 1784mm
- 5 shelves
- Modular design for easy transport and assembly
- Cantilevered to maximise space utilisation

### HALF SLOPING VERTICAL STEEL RACK

Part No. 5000232



#### CONSTRUCTION

- Heavy-duty steel
- WLL: 4.25T per bay
- Height: 2650mm
- Length: 3325mm
- Width: 2865mm
- Modular design and Lifting eyes for ease of transport

### EXTRA HEAVY DUTY VERTICAL PLATE STORAGE RACK

Part No. 5503023



#### CONSTRUCTION

- Heavy-duty steel
- WLL: 42T (6T per bay)
- Height: 1500mm
- Length: 4090mm
- Width: 2865mm
- Fitted with lifting eyes for ease of transport

# WORKSHOP STORAGE RACKS

## ALUMINIUM CHAIN RACK

Part No. 5001978



### CONSTRUCTION

- Heavy-duty aluminium
- WLL: 2T
- Height: 600mm
- Length: 700mm
- Completely TIG welded
- Fitted with handles on each end

## BORE PUMP CRADLE FRAME

Part No. 5501688

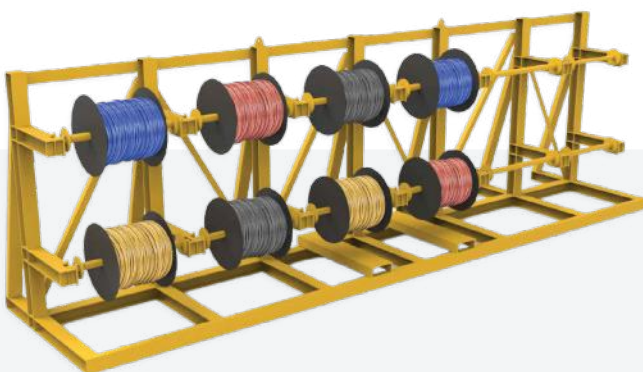


### CONSTRUCTION

- Heavy-duty steel
- WLL: 1T per level (4T total)
- On-sided Steel Storage rack
- Finished in Safety Yellow
- SWL marking attached

## ELECTRICAL CABLE RACKING

Part No. 5502253

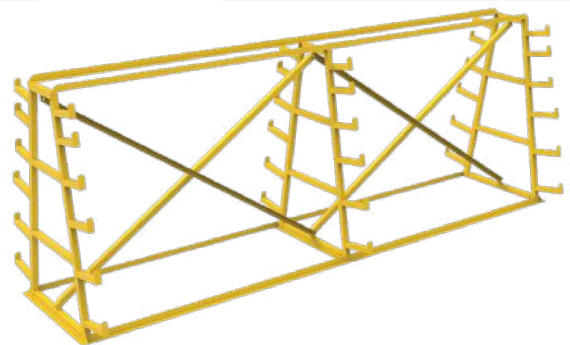


### CONSTRUCTION

- Heavy-duty steel
- 600kg WLL Bottom Horizontal Bar
- 300kg WLL Top Horizontal Bar
- Finished in Safety Yellow

## LIGHTWEIGHT STEEL RACK

Part No. 5501352



### CONSTRUCTION

- Heavy-duty steel
- WLL: 180kg per shelf
- Height: 1855mm
- Length: 5080mm
- Designed to store pipework and steel sections
- Finished in Y14 safety yellow

## WORKSHOP STORAGE RACKS

### SHEET STORAGE RACK

Part No. 5502120

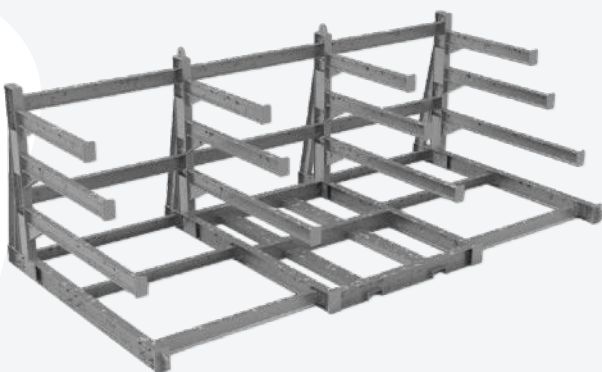


#### CONSTRUCTION

- Heavy-duty steel
- WLL: 300kg per shelf
- Height: 1700mm
- Length: 2800mm
- Lifting eyes
- Cantilevered to ensure optimum space utilisation

### FLEXIBLE SHEETING AND GRIDMESH STORAGE RACK

Part No. 5502251



#### CONSTRUCTION

- Heavy-duty steel
- WLL: 3T per shelf
- Height: 2080mm
- Length: 5850mm
- Lifting eyes
- Cantilevered to ensure optimum space utilisation

### ELECTRICAL EQUIPMENT STORAGE RACK

Part No. 5502091



#### CONSTRUCTION

- Heavy-duty steel
- WLL: 400kg per level
- Modular design and Lifting eyes for ease of transport
- Finished in Y-14 safety yellow
- Certified and compliant with Australian Standards

### STEEL PLATE RACK ON WHEELS

Part No. 5502344



#### CONSTRUCTION

- Heavy-duty steel
- WLL: 3T
- Height: 1510mm
- Length: 2900mm
- Handles for easy mobility
- Fitted with high quality German made Caster Wheels

# WORKSHOP STORAGE RACKS

## STEEL PIPE STORAGE RACK - SMALL

Part No. 5502817



### CONSTRUCTION

- Heavy-duty steel
- WLL: 400kg per shelf
- Height: 1200mm
- Length: 5808mm
- Free standing
- Finished in Y-14 safety yellow

## STEEL PIPE STORAGE RACK

Part No. 5502089



### CONSTRUCTION

- Heavy-duty steel
- WLL: 400kg per level
- Finished in Safety Yellow
- Free standing, eliminating the need to bolt to the ground

## TRAY ROPES STORAGE RACK

Part No. 5502714



### CONSTRUCTION

- Heavy-duty steel
- WLL: 250kg per arm
- Height: 1700mm
- Length: 2050mm
- Fitted with lifting lugs
- Finished in Y-14 safety yellow

## MOBILE STORAGE SIGN RACK

Part No. 5413086



### CONSTRUCTION

- Heavy-duty steel
- WLL: 500kg
- Height: 850mm
- Length: 1200mm
- Width: 1200mm
- Compact design for back of ute transport

## WORKSHOP STORAGE RACKS

### GENERAL WORKSHOP STORAGE RACK Part No. 5412138



#### CONSTRUCTION

- Heavy-duty steel
- WLL: 250kg per shelf
- Height: 1795mm
- Length: 2200mm
- Width: 1000mm
- Wheel chock storage compartment

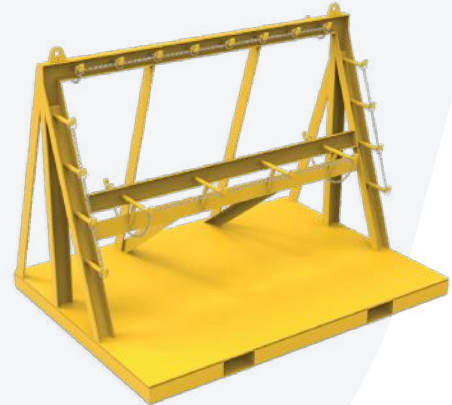
### MOBILE STEEL PLATE RACK Part No. 5501647



#### CONSTRUCTION

- Heavy-duty steel
- Height: 1000mm
- Length: 2000mm
- Width: 2300mm
- Can be customised to your requirements

### STEEL CHAIN RACK Part No. 5501752



#### CONSTRUCTION

- Heavy-duty steel
- WLL: 100kg per hook on outside of frame
- WLL: 200kg per hook on other location
- Height: 1450mm
- Fitted with lifting lugs

### FREESTANDING CHAIN RACK Part No. 5501441



#### CONSTRUCTION

- Heavy-duty steel
- WLL: 50kg per hanger
- Finished in Y-14 safety yellow
- Certified and compliant with Australian Standards

# WORKSHOP STORAGE RACKS

## DRILL HAMMER STORAGE RACK

Part No. 5500867



### CONSTRUCTION

- Heavy-duty steel
- WLL: 720kg
- Height: 1000mm
- Engineered and certified
- Chain restraints for drill hammers
- Easily moved around

## LIFTING CHAIN STORAGE RACK

Part No. 5502174



### CONSTRUCTION

- Heavy-duty steel
- WLL: 200kg per arm (2T total)
- Height: 1670mm
- Length: 2000mm
- Width: 1000mm
- Certified and compliant with Australian Standards

## CABLE DRUM STAND

Part No. 5501144



### CONSTRUCTION

- Heavy-duty steel
- WLL: 3T
- Height: 1460mm
- Length: 1800mm
- Width: 1600mm
- Certified and compliant with Australian Standards

## WORKSHOP STANDS 1 - 15 TONNE

**GENERAL PURPOSE WORK  
STAND 3 TONNE 500MM (H)**  
Part No. 5412026



**CONSTRUCTION**

- Heavy-duty steel
- SWL: 3 Tonne
- Fully engineered and certified

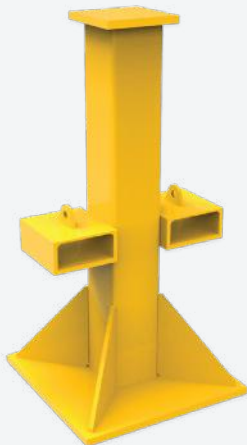
**GENERAL PURPOSE WORK  
STAND 10 TONNE 500MM (H)**  
Part No. 5414004



**CONSTRUCTION**

- Heavy-duty steel
- SWL: 10 Tonne
- Fully engineered and certified

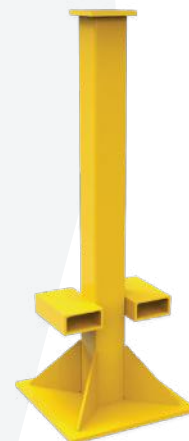
**GENERAL PURPOSE WORK  
STAND 10 TONNE 1020MM (H)**  
Part No. 5414124



**CONSTRUCTION**

- Heavy-duty steel
- SWL: 10 Tonne
- Engineered and certified

**GENERAL PURPOSE WORK  
STAND 10 TONNE 1700MM (H)**  
Part No. 5413031



**CONSTRUCTION**

- Heavy-duty steel
- SWL: 10 Tonne
- Length: 600mm
- Width: 600mm
- Engineered and certified

# WORKSHOP STANDS 1 - 15 TONNE

## GENERAL PURPOSE WORK STAND 10 TONNE 2400MM (H)

Part No. 5414068



### CONSTRUCTION

- Heavy-duty steel
- SWL: 10 Tonne
- Fully engineered and certified

## GENERAL PURPOSE WORK STAND 10 TONNE SQUARE TOP

Part No. 5000004



### CONSTRUCTION

- Heavy-duty steel
- SWL: 10 Tonne
- Length: 500mm
- Width: 500mm
- Engineered and certified

## GENERAL PURPOSE WORK STAND 10 TONNE 3000MM (H)

Part No. 5412204



### CONSTRUCTION

- Heavy-duty steel
- SWL: 10 Tonne
- Fully engineered and certified

## GENERAL PURPOSE WORK STAND 10 TONNE

Part No. 5501658



### CONSTRUCTION

- Heavy-duty steel
- SWL: 10 Tonne
- Length: 2000mm
- Width: 2300mm
- Engineered and certified

## WORKSHOP STANDS 1 - 15 TONNE

### WORK STAND WITH RETRACTABLE WHEELS 10 TONNE 2400MM (H)

Part No. 5501592

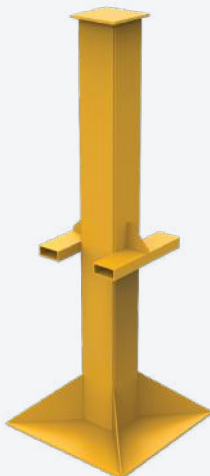


#### CONSTRUCTION

- Heavy-duty steel
- WLL: 10 Tonne
- Fitted with forklift slots
- Fitted with retractable wheels
- Fully engineered and certified

### GENERAL PURPOSE WORK STAND 10 TONNE 3300MM (H)

Part No. 5504681



#### CONSTRUCTION

- Heavy-duty steel
- WLL: 10 Tonne
- Length: 1000mm
- Width: 1150mm
- Fully engineered and certified

### STEEL SUPPORT STAND ON WHEELS

Part No. 5501714

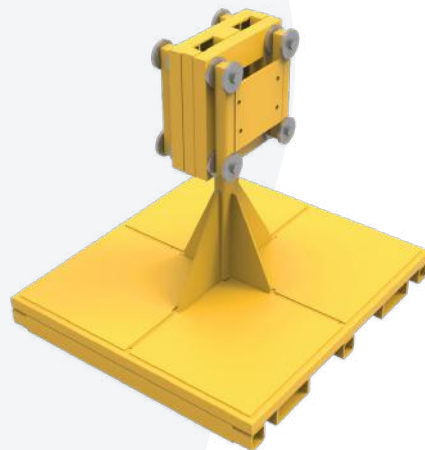


#### CONSTRUCTION

- Heavy-duty steel
- WLL: 500kg
- Height: 740mm
- Length: 600mm
- Width: 720mm
- Fully engineered and certified

### WATER PUMP DRIVE STAND

Part No. 5502871



#### CONSTRUCTION

- Heavy-duty steel
- WLL: 1.5 Tonne
- Height: 1105mm
- Length: 1100mm
- Width: 1200mm
- Painted in company or site colours upon request

## WORKSHOP STANDS 1 - 15 TONNE

### GENERAL PURPOSE WORK STAND 10 TONNE 2400MM (H)

Part No. 5502846



#### CONSTRUCTION

- Heavy-duty steel
- WLL: 10 Tonne
- Length: 1000mm
- Width: 1150mm
- Fitted with forklift slots

### GENERAL PURPOSE WORK STAND 15 TONNE 730MM (H)

Part No. 5401121



#### CONSTRUCTION

- Heavy-duty steel
- SWL: 15 Tonne
- Height: 730mm
- Forklift friendly for plate loading
- Fully engineered and certified

### GENERAL PURPOSE ADJUSTABLE STAND 10 TONNE

Part No. 5503166



#### CONSTRUCTION

- Heavy-duty steel
- WLL: 10 Tonne
- Pin-lock adjusting system
- 100mm increments
- Lifting lugs on top section to remove manual handling risks

## WORKSHOP STANDS 16 - 30 TONNE

### GENERAL PURPOSE WORK STAND 20 TONNE 800MM (H)

Part No. 5401137

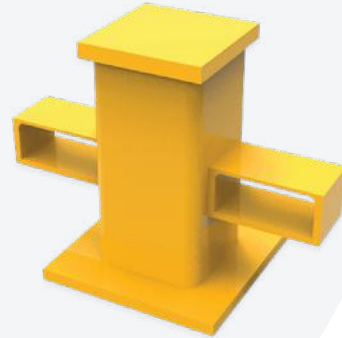


#### CONSTRUCTION

- Heavy-duty steel
- WLL: 20 Tonne
- Height: 800mm
- Fully engineered and certified

### GENERAL PURPOSE WORK STAND 25 TONNE 400MM (H)

Part No. 5000006

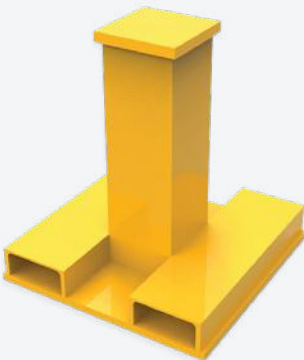


#### CONSTRUCTION

- Heavy-duty steel
- SWL: 25 Tonne
- Height: 400mm
- Fully engineered and certified

### GENERAL PURPOSE WORK STAND 25 TONNE 600MM (H)

Part No. 5401116



#### CONSTRUCTION

- Heavy-duty steel
- WLL: 25 Tonne
- Height: 600mm
- Fully engineered and certified

### GENERAL SUPPORT WORK STAND 30 TONNE 655MM (H)

Part No. 5501038



#### CONSTRUCTION

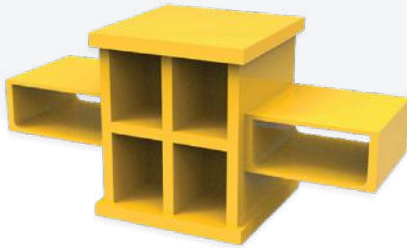
- Heavy-duty steel
- SWL: 30 Tonne
- Fully engineered and certified

## WORKSHOP STANDS

# 16 - 30 TONNE

### GENERAL PURPOSE WORK STAND 30 TONNE 270MM (H)

Part No. 5412032

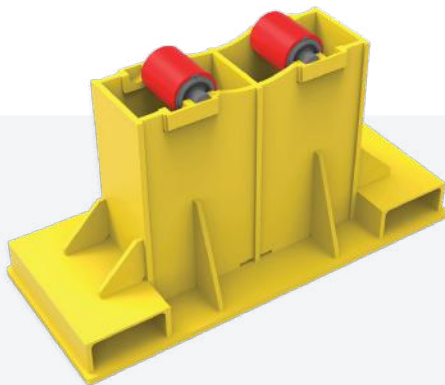


#### CONSTRUCTION

- Heavy-duty steel
- SWL: 30 Tonne
- Height: 270mm
- Fully engineered and certified

### GENERAL SUPPORT WORK STAND 16 TONNE 458MM (H)

Part No. 5001963



#### CONSTRUCTION

- Heavy-duty steel
- WLL: 25 Tonne
- Length: 900mm
- Width: 375mm
- Fully engineered and certified

### GENERAL PURPOSE WORK STAND 30 TONNE 2000MM (H)

Part No. 5410135



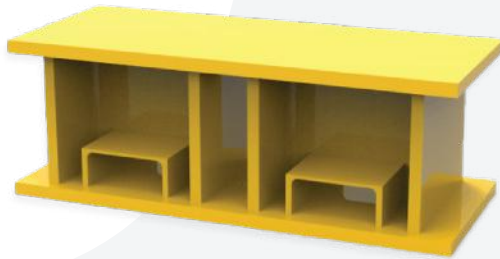
#### CONSTRUCTION

- Heavy-duty steel
- SWL: 30 Tonne
- Length: 1400mm
- Width: 1400mm
- Fully engineered and certified

## WORKSHOP STANDS 31 - 60 TONNE

### GENERAL PURPOSE WORK STAND 45 TONNE 305MM (H)

Part No. 5401153



#### CONSTRUCTION

- Heavy-duty steel
- WLL: 45 Tonne
- Height: 305mm
- Fully engineered and certified

### GENERAL PURPOSE WORK STAND 45 TONNE 680MM (H)

Part No. 5413077



#### CONSTRUCTION

- Heavy-duty steel
- WLL: 45 Tonne
- Height: 680mm
- Fully engineered and certified

### GENERAL SUPPORT STAND 50 TONNE 670MM (H)

Part No. 5511038



#### CONSTRUCTION

- Heavy-duty steel
- WLL: 50 Tonne
- Fully engineered and certified

### GENERAL SUPPORT STAND 50 TONNE 600MM (H)

Part No. 5500988



#### CONSTRUCTION

- Heavy-duty steel
- WLL: 50 Tonne
- Height: 600mm

## WORKSHOP STANDS

# 31 - 60 TONNE

### GENERAL PURPOSE WORK STAND 60 TONNE 1160MM (H)

Part No. 5412029

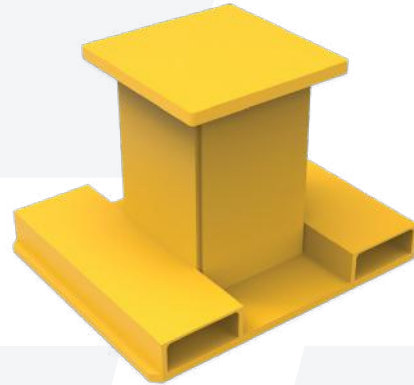


#### CONSTRUCTION

- Heavy-duty steel
- WLL: 60 Tonne
- Height: 1160mm
- Fully engineered and certified

### GENERAL PURPOSE WORK STAND 60 TONNE 500MM (H)

Part No. 5503149



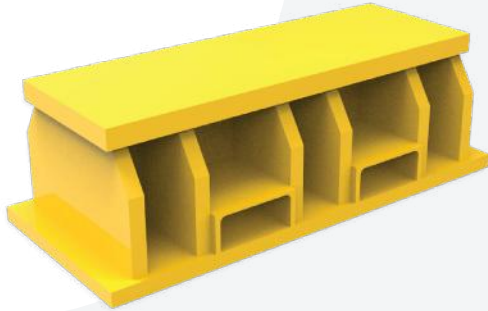
#### CONSTRUCTION

- Heavy-duty steel
- WLL: 60 Tonne
- Height: 500mm
- Fully engineered and certified

## WORKSHOP STANDS 80+ TONNE

### GENERAL PURPOSE WORK STAND 80 TONNE 300MM (H)

Part No. 5000009

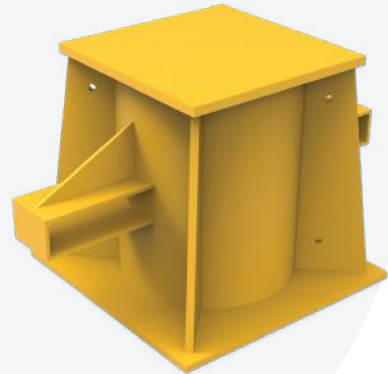


#### CONSTRUCTION

- Heavy-duty steel
- SWL: 80 Tonne
- Length: 900mm
- Fully engineered and certified

### GENERAL PURPOSE STAND 80 TONNE 650MM (H)

Part No. 5502989



#### CONSTRUCTION

- Heavy-duty steel
- WLL: 80 Tonne
- Length: 720mm
- Fully engineered and certified

### GENERAL PURPOSE WORK STAND 80 TONNE 1200MM (H)

Part No. 5001749

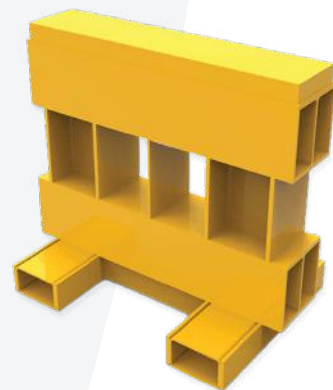


#### CONSTRUCTION

- Heavy-duty steel
- SWL: 80 Tonne
- Length: 780mm
- Fully engineered and certified

### GENERAL PURPOSE WORK STAND 90 TONNE 1200MM (H)

Part No. 5412079



#### CONSTRUCTION

- Heavy-duty steel
- SWL: 90 Tonne
- Height: 1200mm
- Fully engineered and certified

## WORKSHOP STANDS 80+ TONNE

### GENERAL PURPOSE WORK STAND 100 TONNE SQUARE TOP

Part No. 5512169



#### CONSTRUCTION

- Heavy-duty steel
- SWL: 100 Tonne
- Height: 1200mm
- Fully engineered and certified

### GENERAL PURPOSE WORK STAND 100 TONNE ROUND TOP

Part No. 5401192

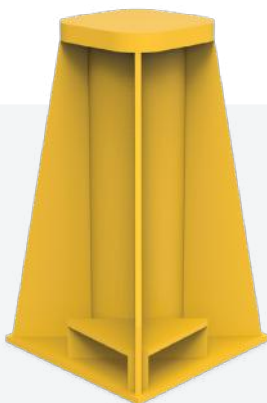


#### CONSTRUCTION

- Heavy-duty steel
- WLL: 100 Tonne
- Length: 1200mm
- Fully engineered and certified

### GENERAL PURPOSE STAND 120 TONNE 970MM (H)

Part No. 5503835

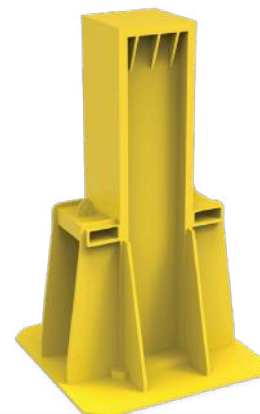


#### CONSTRUCTION

- Heavy-duty steel
- WLL: 120 Tonne
- Length: 560mm
- Fully engineered and certified

### GENERAL PURPOSE WORK STAND 270 TONNE

Part No. 5001988



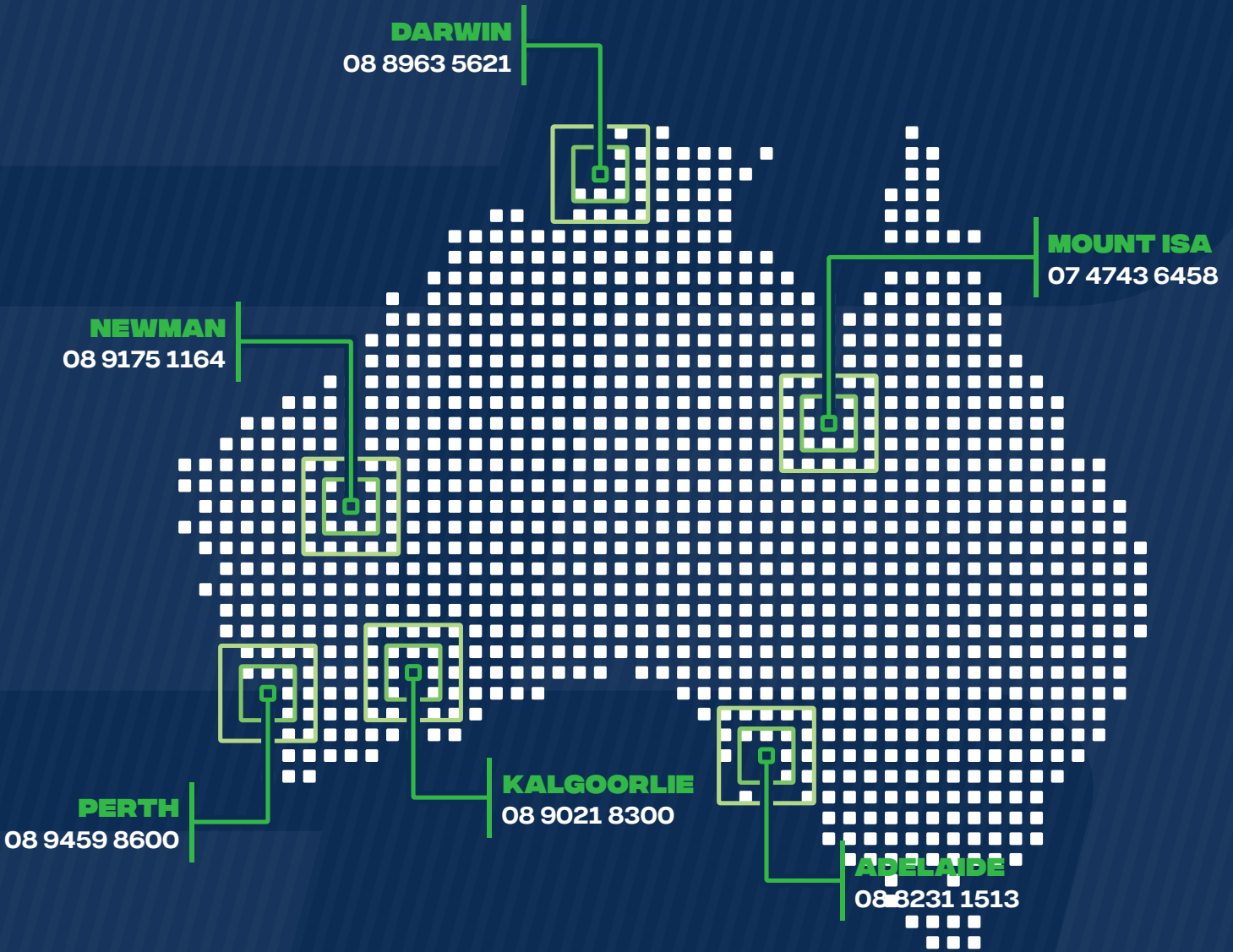
#### CONSTRUCTION

- Heavy-duty steel
- WLL: 270 Tonne
- Fully engineered and certified

**B** BIGGER THAN BUSINESS

# TAKE NOTE





 [sales@bendtechgroup.com.au](mailto:sales@bendtechgroup.com.au)

 [www.bendtechgroup.com.au](http://www.bendtechgroup.com.au)

