





# CATALOGUE

CUPRA COLLECTION

CUPRA



# CUPRA ESSENTIALS

The creation of the CUPRA Essentials line is a significant step for the brand, as it reflects its commitment to providing a comprehensive and cohesive experience for its customers. CUPRA Essentials encompasses not only accessories and lifestyle products but also embodies the brand's philosophy, which blends innovative design, superior quality, and a distinctive sporty spirit. This line allows customers to incorporate CUPRA's unique style into their daily lives, extending beyond just automotive use, thereby reinforcing its identity as an integrated lifestyle brand.



2025

01

# CUPRA ESSENTIALS

CUPRA





# BIG LOGO T-SHIRT MAN



## NEW ESSENTIALS

### MAIN CHARACTERISTICS:

Introducing our **"BIG LOGO"** T-SHIRT, available in a regular fit and five color variants inspired in our cars (Moonstone, Enceladus Grey, Rio Green, Tobacco Brown and White). This T-shirt is made from 100% organic cotton and features the distinctive "CUPRA Sustainable Material" label. The print is created using the water-based screen-printing technique, ensuring durability over time and a soft, tactile feel. This garment has a larger size than usual.

### MATERIAL:

100% organic cotton | Water base printing





# BIG LOGO T-SHIRT MAN

## NEW ESSENTIALS



### BIG LOGO WHITE:

XS | 6H1084200ABLAB  
S | 6H1084200ACLAB  
M | 6H1084200ADLAB  
L | 6H1084200AELAB  
XL | 6H1084200AFLAB  
XXL | 6H1084200AGLAB



### BIG LOGO ENCELADUS GREY:

XS | 6H1084200ABIAF  
S | 6H1084200ACIAF  
M | 6H1084200ADIAF  
L | 6H1084200AEIAF  
XL | 6H1084200AFIAF  
XXL | 6H1084200AGIAF



### BIG LOGO TOBACCO BROWN:

XS | 6H1084200ABOBQ  
S | 6H1084200ACOBQ  
M | 6H1084200ADOBQ  
L | 6H1084200AEOBQ  
XL | 6H1084200AFOBQ  
XXL | 6H1084200AGOBQ



### BIG LOGO MOONSLATE:

XS | 6H1084200ABIBJ  
S | 6H1084200ACIBJ  
M | 6H1084200ADIBJ  
L | 6H1084200AEIBJ  
XL | 6H1084200AFIBJ  
XXL | 6H1084200AGIBJ



### BIG LOGO RIO GREEN:

XS | 6H1084200ABHAU  
S | 6H1084200ACHAU  
M | 6H1084200ADHAU  
L | 6H1084200AEHAU  
XL | 6H1084200AFHAU  
XXL | 6H1084200AGHAU



# EMBOSSED T-SHIRT MAN



CUPRA COLLECTION



## NEW ESSENTIALS

### MAIN CHARACTERISTICS:

The CUPRA EMBOSSED T-SHIRT stands out with its subtle tone-on-tone EMBOSSED and a versatile regular fit suitable for all occasions. Available in three color variants (Moon slate, Enceladus Grey, and White), this T-shirt is equipped with the signature CUPRA Sustainable Material label. Crafted from 100% organic cotton, it is an Essential wardrobe piece for any occasion. The CUPRA EMBOSSED T-SHIRT, with its understated style, comfort, and sustainability is the conscious fashion statement by CUPRA. This garment has a larger size than usual.

### MATERIAL:

100% organic cotton | Positive embossing





# EMBOSSSED T-SHIRT MAN

## NEW ESSENTIALS



### EMBOSSSED WHITE:

XS | 6H1084200AHLAB  
S | 6H1084200AJLAB  
M | 6H1084200AKLAB  
L | 6H1084200ALLAB  
XL | 6H1084200AMLAB  
XXL | 6H1084200ANLAB



### EMBOSSSED ENCELADUS GREY:

XS | 6H1084200AHIAF  
S | 6H1084200AJIAF  
M | 6H1084200AKIAF  
L | 6H1084200ALIAF  
XL | 6H1084200AMIAF  
XXL | 6H1084200ANIAF



### EMBOSSSED MOONSLATE:

XS | 6H1084200AHIBJ  
S | 6H1084200AJIBJ  
M | 6H1084200AKIBJ  
L | 6H1084200ALIBJ  
XL | 6H1084200AMIBJ  
XXL | 6H1084200ANIBJ

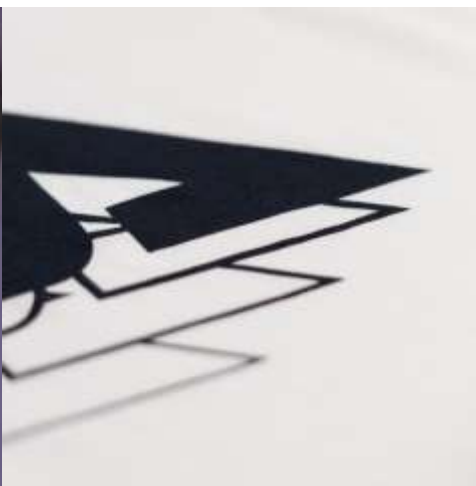




# BIG LOGO T-SHIRT WOMAN



CUPRA COLLECTION



## NEW ESSENTIALS

### MAIN CHARACTERISTICS:

Introducing our **"BIG LOGO"** T-SHIRT, available in a regular fit and five color variants inspired in our cars (Moonstone, Enceladus Grey, Rio Green, Tobacco Brown and White). This T-shirt is made from 100% organic cotton and features the distinctive "CUPRA Sustainable Material" label. The print is created using the water-based screen-printing technique, ensuring durability over time and a soft, tactile feel. (CROP TOP FITTING)

### MATERIAL:

100% organic cotton | Water base printing





# BIG LOGO T-SHIRT WOMAN

## NEW ESSENTIALS



### BIG LOGO WHITE:

XS | 6H1084210E LAB  
S | 6H1084210F LAB  
M | 6H1084210G LAB  
L | 6H1084210H LAB  
XL | 6H1084210J LAB  
XXL | 6H1084210K LAB



### BIG LOGO ENCELADUS GREY:

XS | 6H1084210E IAF  
S | 6H1084210F IAF  
M | 6H1084210G IAF  
L | 6H1084210H IAF  
XL | 6H1084210J IAF  
XXL | 6H1084210K IAF



### BIG LOGO TOBACCO BROWN:

XS | 6H1084210E OBQ  
S | 6H1084210F OBQ  
M | 6H1084210G OBQ  
L | 6H1084210H OBQ  
XL | 6H1084210J OBQ  
XXL | 6H1084210K OBQ



### BIG LOGO MOONSLATE:

XS | 6H1084210E IBJ  
S | 6H1084210F IBJ  
M | 6H1084210G IBJ  
L | 6H1084210H IBJ  
XL | 6H1084210J IBJ  
XXL | 6H1084210K IBJ



### BIG LOGO RIO GREEN:

XS | 6H1084210E HAU  
S | 6H1084210F HAU  
M | 6H1084210G HAU  
L | 6H1084210H HAU  
XL | 6H1084210J HAU  
XXL | 6H1084210K HAU



# EMBOSSSED T-SHIRT WOMAN



CUPRA COLLECTION



## NEW ESSENTIALS

### MAIN CHARACTERISTICS:

The CUPRA EMBOSSED T-SHIRT stands out with its subtle tone-on-tone EMBOSSED and a versatile regular fit suitable for all occasions. Available in three color variants (Moonslate, Enceladus Grey, and White), this T-shirt is equipped with the signature CUPRA Sustainable Material label. Crafted from 100% organic cotton, it is an ESSENTIAL wardrobe piece for any occasion. The CUPRA EMBOSSED T-SHIRT, with its understated style, comfort, and sustainability is the conscious fashion statement by CUPRA. (CROP TOP FITTING)

### MATERIAL:

100% organic cotton | Positive embossing





# EMBOSED T-SHIRT WOMAN

## NEW ESSENTIALS



### EMBOSED WHITE:

XS | 6H1084210S LAB  
S | 6H1084210T LAB  
M | 6H1084210AALAB  
L | 6H1084210ABLAB  
XL | 6H1084210ACLAB  
XXL | 6H1084210ADLAB



### EMBOSED ENCELADUS GREY:

XS | 6H1084210S IAF  
S | 6H1084210T IAF  
M | 6H1084210AAIAF  
L | 6H1084210ABIAF  
XL | 6H1084210ACIAF  
XXL | 6H1084210ADIAF



### EMBOSED MOONSLATE:

XS | 6H1084210S IBJ  
S | 6H1084210T IBJ  
M | 6H1084210AAIBJ  
L | 6H1084210ABIBJ  
XL | 6H1084210ACIBJ  
XXL | 6H1084210ADIBJ



# HOODIE UNISEX



## NEW ESSENTIALS

### MAIN CHARACTERISTICS:

The CUPRA HOODIE is an iconic and representative piece of the CUPRA Collection, available in two colors: Moonslate and Enceladus Grey. Every detail has been meticulously crafted.

We have updated the hoodie by replacing the iridescent finish on the pockets with binding pockets, while retaining the 3D rubber CUPRA logo and mid-weight brushed fabric construction. These elements make it truly unique and versatile, suitable for all outfits and season

### MATERIAL:

70% organic cotton, 30% recycled polyester

Embroidery | Copper color deailing | PU Application with Copper edge | PU Binding application







# HOODIE UNISEX

## NEW ESSENTIALS



### HOODIE ENCELADUS GREY:

XS | 6H1084130L AIF  
S | 6H1084130M AIF  
M | 6H1084130N AIF  
L | 6H1084130P AIF  
XL | 6H1084130Q AIF  
XXL | 6H1084130R AIF



### HOODIE MOONSLATE:

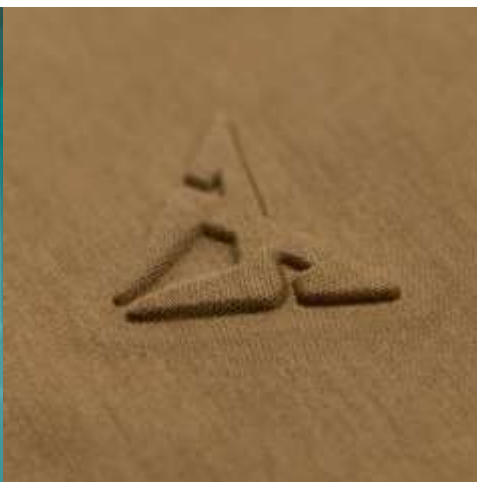
XS | 6H1084130L IBJ  
S | 6H1084130M IBJ  
M | 6H1084130N IBJ  
L | 6H1084130P IBJ  
XL | 6H1084130Q IBJ  
XXL | 6H1084130R IBJ



# CREWNECK MAN



CUPRA COLLECTION



## NEW ESSENTIALS

### MAIN CHARACTERISTICS:

The CUPRA CREWNECK SWEATSHIRT stands out with its subtle tone-on-tone EMBOSSED and a versatile regular fit suitable for all occasions. Available in three color variants (Moonslate, Rio Green, and Tobacco Brown).

Elevate your style with the CUPRA CREWNECK SWEATSHIRT, a blend of comfort, sustainability, and subtle uniqueness.

### MATERIAL:

80% cotton, 15% recycled polyester, 5% elastane

| Positive embossing





# CREWNECK MAN

## NEW ESSENTIALS



### CREWNECK MOONSLATE:

XS | 6H1084130S IBJ  
S | 6H1084130T IBJ  
M | 6H1084130AAIBJ  
L | 6H1084130ABIBJ  
XL | 6H1084130ACIBJ  
XXL | 6H1084130ADIBJ



### CREWNECK RIO GREEN:

XS | 6H1084130S HAU  
S | 6H1084130T HAU  
M | 6H1084130AAHAU  
L | 6H1084130ABHAU  
XL | 6H1084130ACHAU  
XXL | 6H1084130ADHAU



### CREWNECK TOBACCO BROWN:

XS | 6H1084130S OBQ  
S | 6H1084130T OBQ  
M | 6H1084130AAOBQ  
L | 6H1084130ABOBQ  
XL | 6H1084130ACOBQ  
XXL | 6H1084130ADOBQ



# CREWNECK WOMAN



## NEW ESSENTIALS

### MAIN CHARACTERISTICS:

The CUPRA CREWNECK SWEATSHIRT stands out with its subtle tone-on-tone EMBOSSED and a versatile regular fit suitable for all occasions. Available in three color variants (Moon slate, Rio Green, and Tobacco Brown), this crewneck is equipped with the signature CUPRA Sustainable Material label.

Elevate your style with the CUPRA CREWNECK SWEATSHIRT, a blend of comfort, sustainability, and subtle uniqueness. (CROP TOP FITTING)

### MATERIAL:

80% cotton, 15% recycled polyester, 5% elastane  
| Positive embossing





# CREWNECK WOMAN

## NEW ESSENTIALS



### CREWNECK MOONSLATE:

XS | 6H1084140E IBJ  
S | 6H1084140F IBJ  
M | 6H1084140G IBJ  
L | 6H1084140H IBJ  
XL | 6H1084140J IBJ  
XXL | 6H1084140K IBJ



### CREWNECK RIO GREEN:

XS | 6H1084140E HAU  
S | 6H1084140F HAU  
M | 6H1084140G HAU  
L | 6H1084140H HAU  
XL | 6H1084140J HAU  
XXL | 6H1084140K HAU



### CREWNECK TOBACCO BROWN:

XS | 6H1084140E OBQ  
S | 6H1084140F OBQ  
M | 6H1084140G OBQ  
L | 6H1084140H OBQ  
XL | 6H1084140J OBQ  
XXL | 6H1084140K OBQ





# CUPRA TECH T-SHIRT UNISEX



CUPRA COLLECTION



## NEW ESSENTIALS

### MAIN CHARACTERISTICS:

Short sleeve technical t-shirt, unisex. Round neck finished in a trim of the same fabric. The CUPRA logo is on the left side of the chest, matching and ironed through a thermofusion process. The lower part of the sleeves and body are also thermoset.

### MATERIAL:

Materials: 80% nylon 20% elastane | Laser and thermoset finishes. Thermofused silicone CUPRA logo.





# CUPRA POLO TECH UNISEX



CUPRA COLLECTION



## NEW ESSENTIALS

### MAIN CHARACTERISTICS:

Short sleeve technical polo shirt for men. The neck and placket are cut in blood using laser technique. The CUPRA logo is on the left side of the chest, matching and ironed through a thermofusion process. The lower part of the sleeves and body are also thermoset.

### MATERIAL:

Materials: 80% nylon 20% elastane | Laser and thermoset finishes. Thermofused silicone CUPRA logo.





# CUPRA TECH T-SHIRT & POLO UNISEX

## NEW ESSENTIALS



### TECH MOONSLATE:

XS | 6H1084210L IBJ  
S | 6H1084210M IBJ  
M | 6H1084210N IBJ  
L | 6H1084210P IBJ  
XL | 6H1084210Q IBJ  
XXL | 6H1084210R IBJ



### TECH ENCELADUS GREY:

XS | 6H1084210L IAF  
S | 6H1084210M IAF  
M | 6H1084210N IAF  
L | 6H1084210P IAF  
XL | 6H1084210Q IAF  
XXL | 6H1084210R IAF



### POLO ENCELADUS GREY:

XS | 6H1084230S AIF  
S | 6H1084230T AIF  
M | 6H1084230AAAIF  
L | 6H1084230ABAIF  
XL | 6H1084230ACAIF  
XXL | 6H1084230ADAIF



### POLO MOONSLATE:

XS | 6H1084230S IBJ  
S | 6H1084230T IBJ  
M | 6H1084230AAIBJ  
L | 6H1084230ABIBJ  
XL | 6H1084230ACIBJ  
XXL | 6H1084230ADIBJ



# BASEBALL CAP TAIGA



## ACCESSORIES

### MAIN CHARACTERISTICS:

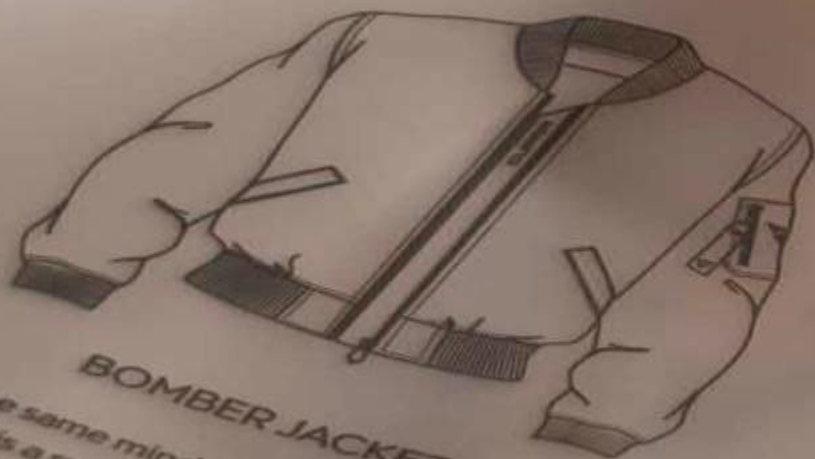
The CUPRA BASEBALL CAP TAIGA is a highly anticipated piece, offering a versatile color that effortlessly complements any outfit. This essential and iconic accessory returns in a Taiga edition, maintaining the same meticulous details and materials. Designed with an adjustable strap, it guarantees a perfect fit for all head sizes and preferences. This one-size UNISEX cap is crafted with unparalleled attention to detail, featuring the signature silicone logo and lettering on the back, making it a truly standout piece.

### REFERENCES:

BASEBALL CAP TAIGA: 6H1084300C IBB



04

**BOMBER JACKET**

Designed by the same minds behind our icons on the road.  
This product is a symbol of performance, style and a  
challenger attitude.

**WEAR THE IMPULSE**  
**CUPRA**

CUPRA  
JACKETS





# CUPRA SOFTSHELL JACKET



## JACKETS COLLECTION

### MAIN CHARACTERISTICS:

Discover the perfect balance of functionality and style with the Softshell Jacket from CUPRA's Essential Collection. Designed for all-day wear, this versatile unisex jacket is crafted from a durable blend of 97% polyester and 3% elastane, offering flexibility and water resistance. Its sleek matte finish and practical design, featuring multiple functional pockets—including a dedicated sleeve pocket—make it an essential for outdoor adventures or urban strolls. Combining practicality with refined elegance, the CUPRA Softshell Jacket is the ultimate in elevated outerwear.

### MATERIAL:

97% Polyester  
3% Elastane

### REFERENCES:

XS: 6H1084002H AAA  
S: 6H1084002H AAB  
M: 6H1084002H AAC  
L: 6H1084002H AAD  
XL: 6H1084002H AAE  
XXL: 6H1084002H AAF





# CUPRA BOMBER JACKET



## JACKETS COLLECTION

### MAIN CHARACTERISTICS:

Crafted from premium satin-finished polyester in a deep navy-blue, this bomber offers a sleek, timeless aesthetic suitable for any occasion, perfect for individuals with a daring spirit.

The contrasting copper lining offers a striking reveal, while the removable keyring featuring the iconic CUPRA logo adds a functional yet distinctive touch, embodying the brand's commitment to performance and detail.

### MATERIAL:

100% Polyester

### REFERENCES:

XS: 6H1084002G AAA  
S: 6H1084002G AAB  
M: 6H1084002G AAC  
L: 6H1084002G AAD  
XL: 6H1084002G AAE  
XXL: 6H1084002G AAF





# CUPRA LEATHER JACKET



## JACKETS COLLECTION

### MAIN CHARACTERISTICS:

Introducing our premium leather jacket, meticulously crafted from high-quality leather to provide both durability and timeless style.

The jacket features a sleek front zipper closure, adding a modern touch while ensuring a secure fit. Made with an exceptionally soft and comfortable fabric, this jacket adapts effortlessly to your body, offering ease of movement and all-day comfort. Designed for those who value quality and sophistication.

### MATERIAL:

100% Leather Outside  
100% Polyester Inside





## CUPRA LEATHER JACKET MEN

### MATERIAL | MAIN CHARACTERISTICS

Leather jacket, made of high-quality leather. With outside pockets.  
With CUPRA logo stitched on sleeve and snap buttons.  
100% leather outside | 100% polyester inside.

### REFERENCE:

S | 6H1084003A KCF  
L | 6H1084003C KCF  
XXL | 6H1084003E KCF

M | 6H1084003B KCF  
XL | 6H1084003D KCF





## CUPRA LEATHER JACKET WOMEN

### MATERIAL | MAIN CHARACTERISTICS

Leather jacket, made of high-quality leather. With outside pockets. With CUPRA logo stitched on sleeve and snap buttons. 100% leather outside | 100% polyester inside.

### REFERENCE:

XS | 6H1084012 KCF  
M | 6H1084012B KCF  
XL | 6H1084012D KCF

S | 6H1084012A KCF  
L | 6H1084012C KCF







05

# CUPRA DRINKWARE





# CUPRA WATER BOTTLE



## DRINKWARE COLLECTION

### MAIN CHARACTERISTICS:

Compact and practical, with a bold design that stands out. Perfect for keeping liquids cold or hot. The fading from dark gray to copper captures the intensity and dynamism that define CUPRA's design language. It is designed to fit perfectly in your CUPRA car. The ideal partner for every journey.

### MATERIAL & CAPACITY

Stainless Steel 750ml

### COLOUR:

Fading from dark gray to copper

### REFERENCE:

6H1069601P



# CUPRA THERMO CUP



## DRINKWARE COLLECTION

### MAIN CHARACTERISTICS:

Simple and ergonomic, with a design that stands out. Perfect for keeping liquids cold or hot. The magnetic and detachable closure ensures perfect cleanliness. The fading from dark gray to copper captures the intensity and dynamism that define CUPRA's design language. It is designed to fit perfectly in your CUPRA car. The ideal partner for every journey.

### MATERIAL & CAPACITY

Stainless Steel 300ml

### COLOUR:

Fading from dark gray to copper

### REFERENCE:

6H1069604C



2025

09

# KIDS ESSENTIALS COLLECTION

CUPRA



# BIG LOGO T-SHIRT WHITE KIDS



## KIDS COLLECTION

### MAIN CHARACTERISTICS:

Introducing our KIDS COLLECTION: the cheerful BIG LOGO T-SHIRT, the comfortable CREWNECK MOONSLATE and the trendy HOODIE MOONSLATE. These products carry the CUPRA Sustainable Material label. Made from 100% organic cotton, it is an ESSENTIAL garment for any occasion. It's a KIDS COLLECTION with understated style, comfort and sustainability, it's CUPRA's conscious fashion statement.

### MATERIAL:

100% Organic Cotton | Water-based screen printing

### REFERENCES:

5-6: 6H1084200ENLAB  
7-8: 6H1084200EPLAB  
9-10: 6H1084200EQLAB  
11-12: 6H1084200ERLAB







# CREWNECK SWEATSHIRT MOONSLATE KIDS



## KIDS COLLECTION

### MAIN CHARACTERISTICS:

Introducing our KIDS COLLECTION: the cheerful BIG LOGO T-SHIRT, the comfortable CREWNECK MOONSLATE and the trendy HOODIE MOONSLATE. These products carry the CUPRA Sustainable Material label. Made from 100% organic cotton, it is an ESSENTIAL garment for any occasion. It's a KIDS COLLECTION with understated style, comfort and sustainability, it's CUPRA's conscious fashion statement.

### MATERIAL:

80% cotton, 15% recycled polyester, 5% elastane.  
| Positive embossing.

### REFERENCES:

5-6: 6H1084130AJIBJ  
7-8: 6H1084130AKIBJ  
9-10: 6H1084130ALIBJ  
11-12: 6H1084130AMIBJ







# HOODIE MOONSLATE KIDS



## KIDS COLLECTION

### MAIN CHARACTERISTICS:

Introducing our KIDS COLLECTION: the cheerful BIG LOGO T-SHIRT, the comfortable CREWNECK MOONSLATE and the trendy HOODIE MOONSLATE. These products carry the CUPRA Sustainable Material label. Made from 100% organic cotton, it is an ESSENTIAL garment for any occasion. It's a KIDS COLLECTION with understated style, comfort and sustainability, it's CUPRA's conscious fashion statement.

### MATERIAL:

65% Organic Cotton | 35% Recycled Polyester | Embroidery | Copper color deailing | PU Application with Copper edge | PU Iridescent application

### REFERENCES:

5-6: 6H1084130AEAIF  
7-8: 6H1084130AFAIF  
9-10: 6H1084130AGAIF  
11-12: 6H1084130AHAIF





2025

10

# CUPRA ACCESSORIES

CUPRA



# BASEBALL & LIGHTWEIGHT CAP



## ACCESSORIES

### MAIN CHARACTERISTICS:

The CUPRA BASEBALL CAP is an essential and iconic item. The 3D silicon rubber CUPRA logo application sets it apart and makes it truly unique. Its adjustable strap ensures it can fit all types of head sizes and preferences. This is a one size UNISEX cap. The dedication in every detail makes the cap unique. It incorporates the silicone logo and lettering on the back. The Cooper color is highlighted on the eyelets and back buckle.

The CUPRA LIGHTWEIGHT CAP is a fusion of style and design. Crafted from recycled polyester and featuring fabric lasered side panels, it stands out as a one-of-a-kind accessory. Its versatility and unique style make it suitable for a variety of occasions and a representation of your distinctive fashion sense. This is a one size UNISEX cap. Material: Heat welding | Laser Cut.

### REFERENCES:

BASEBALL CAP : 6H1084300C IAJ  
LIGHTWEIGHT CAP: 6H1084300D IAJ





# BEANIE & BUCKET HAT



## ACCESSORIES

### MAIN CHARACTERISTICS:

The CUPRA BEANIE HAT and the CUPRA REVERSIBLE **FISHERMAN'S** HAT are made from recycled polyester, part of the CUPRA Sustainable Material collection. The Beanie Hat, available in two sizes, features an iridescent effect from interwoven threads of different colors, with unisex options in dark and light shades. The Reversible Fisherman's Hat offers two styles—iridescent fabric on one side and Moonstone on the other. This versatile unisex piece also comes in two sizes, allowing for easy style changes while emphasizing sustainability.

### REFERENCES:

BEANIE BLUE: 6H1084300G IBJ

BEANIE IRID: 6H1084300G HAU

BUCKET HAT ENCELADUS: 6H1084300G IBJ

BUCKET HAT: 6H1084300F GDF





# CUPRA LANYARD



## ACCESSORIES

### MAIN CHARACTERISTICS:

CUPRA lanyard with carabiner, safety clip and laser engraved logo: the best way not to lose anything.  
Material: 100% Polyester.

### REFERENCES:

MOONSLATE: 6H2087610A IBJ  
RIO GREEN: 6H2087610A HAU



# CUPRA COLLECTION



## ORIGINAL COLLECTION

The CUPRA Original Collection embodies the brand's distinct blend of performance, style, and sophistication. This exclusive line of apparel and accessories is crafted with meticulous attention to detail, offering premium materials and designs that reflect CUPRA's innovative spirit and dynamic lifestyle. From sleek clothing to finely crafted accessories, each piece in the collection is designed to complement the lifestyle of those who appreciate the brand's fusion of sporty elegance and cutting-edge technology. The CUPRA Original Collection not only enhances the everyday experience of its customers but also strengthens their connection to the CUPRA brand's unique identity.





## CUPRA AUTOMATIC UMBRELLA BLACK

### MATERIAL | MAIN CHARACTERISTICS

The CUPRA Automatic Umbrella in black is designed for both functionality and style. Featuring an automatic open mechanism, this umbrella ensures quick and easy deployment during sudden rain showers. The durable construction and sleek design, adorned with the CUPRA logo, make it a reliable and fashionable accessory for any weather.

### REFERENCE:

6H1087600 MAA



## CUPRA KIDS CAR

### MATERIAL | MAIN CHARACTERISTICS

CUPRA infant car for children from 12 months with padded seat, including adhesive tape, horn button with CUPRA logo in copper, two-colour rims. Polyethylene.

### REFERENCE:

6H1087500 IAF



## CUPRA KEYRING

### MATERIAL | MAIN CHARACTERISTICS

Minimalistic keyring made of zinc alloy with CUPRA brand image cut-out, robust high-quality PVD coating and ground polished surface. Metal (zinc alloy).

### REFERENCE:

6H1087011 IAA





# CUPRA COLLABORATIONS

CUPRA's collaborations with renowned brands across various sectors enhance its image as an innovative and dynamic company. These partnerships allow CUPRA to expand its presence beyond the automotive market, integrating its cutting-edge and sporty design identity into a range of products and experiences. By teaming up with industry leaders, CUPRA connects with a broader and more diverse audience while strengthening its brand through synergies that highlight shared values such as excellence, innovation, and a passion for quality. As a result, these collaborations not only enrich CUPRA's product offerings but also solidify its position as a comprehensive lifestyle brand, capable of influencing various aspects of contemporary culture.



# MAM



## MAM x CUPRA

The collaboration between CUPRA and MAM, unveiled last April at the WP Formentor event, highlights the union of two brands with a shared passion for design. MAM, known for its innovative ethical jewelry, has partnered with CUPRA to create exclusive elements featured in the Member Box, a key piece in welcoming new customers to the CUPRA tribe. This collection embodies a commitment to aesthetics and sustainability, offering members a unique experience that combines luxury, ethical consciousness, and the distinctive spirit of innovation characteristic of both brands.





# PARAMETRIC BRACELET



## MAM x CUPRA

### MAIN CHARACTERISTICS:

This bracelet extends the essence of the Cupra car by incorporating the car's distinctive pattern into its design. MAM selected ruthenium for its rare beauty and strength, symbolizing the values of CUPRA cars. For its rare beauty and strength, MAM has selected ruthenium to symbolize the values of CUPRA cars. The bracelet copper as the core material, as it is part of the CUPRA DNA. MAM has developed a copper alloy with low-carat gold to replicate the color of the CUPRA logo while upholding high quality and durability standards.

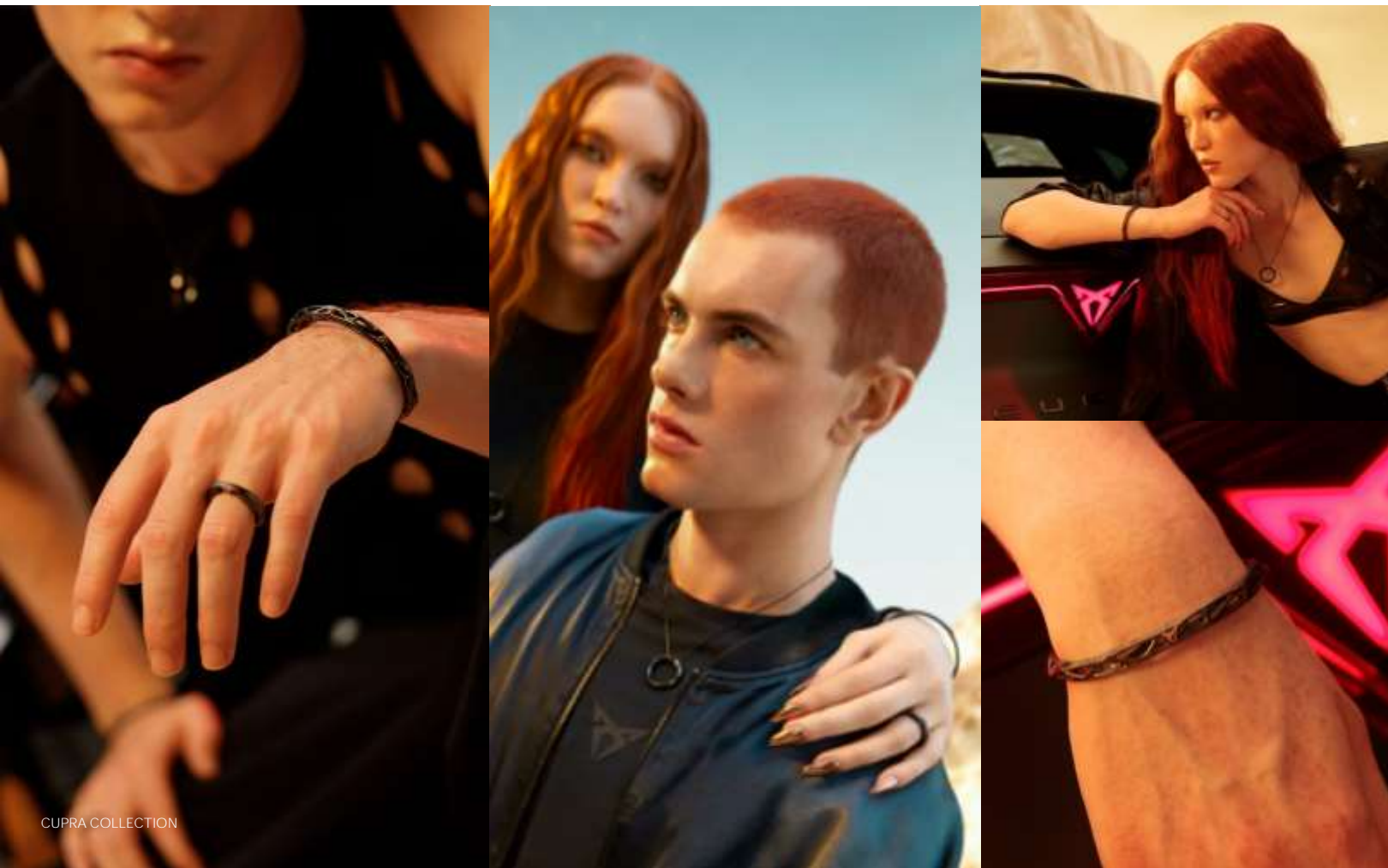
### REFERENCES:

BRACELET S/M: 6H1050850E  
BRACELET L/XL: 6H1050850F





# BRACELET VORONOI



## MAM x CUPRA

### MAIN CHARACTERISTICS:

Ruthenium bracelet (precious metal) with the CUPRA logo in copper with low-karat gold. Variation: adjustable.

Inspired by the triangular shape of the Cupra logo, this bracelet uses the Voronoi method to create an aspirational reinterpretation. It also reflects Barcelona's DNA, drawing inspiration from Gaudí's renowned architectural style.

Available in one size, but the fit is adjustable.

### REFERENCES:

BRACELET VORONOI: 6H1050850G







# marset



## MARSET x CUPRA

The collaboration between Marset and CUPRA merges their shared Barcelona heritage and passion for innovative design. This partnership has resulted in a portable and rechargeable lamp that reinterprets the classic garage lamp aesthetic, incorporating advanced features and superior quality. Focusing on functionality and style, this joint creation reflects both brands' commitment to excellence in design and technology, offering a contemporary lighting solution that is both practical and elegant.



# MARSET x CUPRA CHISPA



CUPRA COLLECTION



## MARSET x CUPRA

### MAIN CHARACTERISTICS:

The CHISPA lamp from CUPRA is a sleek, high-quality design merging CUPRA Garage aesthetics with Marset's lighting expertise. This sophisticated lamp features a rotatable grille around its light source and offers three lighting positions. When illuminated, its warm light softens the color, with a black piece reflecting CUPRA's signature copper hue. The base, covered in black rubber, includes a metal half-ring for hanging, and the rubber-protected microUSB-C charging area ensures durability. An included accessory with black rope, a hook, and a metallic piece allows for adjustable hanging heights, combining versatility with elegance.

### MATERIAL / PRODUCT TECHNOLOGY:

Body and structure in colored polycarbonate with white opal polyethylene diffuser.

### REFERENCES:

6H3052001 LAA





# MARSET x CUPRA DIPPING LIGHT



## MARSET x CUPRA

### MAIN CHARACTERISTICS:

The Marset x CUPRA Dipping Light continues the collaboration between CUPRA and Marset, merging their design passions into a unique creation. This special edition features a captivating color gradient achieved through hand-dipped glass, with a metallic copper base reflecting CUPRA's bold style. It offers three light levels and a rechargeable battery that lasts up to five hours at maximum intensity and 20 hours at minimum. The lamp blends artistic design with functional elegance, embodying CUPRA's distinctive aesthetic.

### MATERIAL / PRODUCT TECHNOLOGY:

The lamp features a hand-dipped glass shade with a color gradient and a metallic copper base, highlighting CUPRA's design. It also includes a durable rechargeable battery.

### REFERENCES:

6H3052001A LAA







**CAFE DE FINCA**  
COFFEE ROASTERS  
EST 2009





# CDF X CUPRA CUP



CUPRA COLLECTION



## CAFÉ DE FINCA x CUPRA

### MAIN CHARACTERISTICS:

Ceramic mug with a capacity of 280ml.

### MATERIAL / PRODUCT TECHNOLOGY:

Exclusive CAFÉ DE FINCA x CUPRA mug, made of high quality ceramic with an elegant matte finish.

### REFERENCES:

CDF X CUPRA CUP: 6H1069601K





## WILSON x CUPRA

CUPRA, continuing with its commitment to the world of padel, collaborates with Wilson Sporting Goods Co. to continue growing in the sports industry. Wilson Sporting Goods Co is a leading brand in the sporting goods industry. This partnership has resulted in the creation of a capsule collection that includes specialised products for the sport. This launch underlines the interest of both brands to strengthen their presence in the padel market, a sport that is growing in both popularity and competitiveness.





# CUPRA PADEL RACKET V2



## WILSON x CUPRA

### MAIN CHARACTERISTICS:

The racket features the CUPRA logo on the face, Arrow-Grip texture for improved spin and excellent feel, and Soft EVA foam for an enviable blend of comfort and light power on contact. This racket offers: **DURABILITY** (Adding carbon reinforcement around the edge of the racket), **PERFORMANCE** (Increasing the size of the sweet spot for a more consistent feel across the face) and **HARDNESS** (Injection-moulded inserts give a quality finish without compromising the overall design).

### MATERIAL / PRODUCT TECHNOLOGY:

Soft EVA foam | Spin Effect texture | Sharp Hole technology | Shock Shield Grip | Carbon Fiber Face | Arrow-Grip Texture | Detachable wrist rope.

### REFERENCE:

6H2050539A LAA





# CUPRA PADEL RACKET V2



CUPRA COLLECTION



## WILSON x CUPRA

### MAIN CHARACTERISTICS:

Completely new design and different from the previous ones, inspired by the CUPRA Urban Rebel and including iridescent finishes. It is a very light racket with a round shape, which translates into a perfect balance between control and power.

### MATERIAL / PRODUCT TECHNOLOGY:

Soft EVA Foam | Spin Effect Texture | Sharp Hole Technology | Shock Shield Grip | Carbon Fiber Face | Ecological Handle Cap | Detachable Wrist String.

### REFERENCE:

6H2050539C LAA







# CUPRA PADEL BAG V2



## WILSON x CUPRA

### MAIN CHARACTERISTICS:

The CUPRA Paddle Bag represents the dedication of two brands, Wilson and CUPRA, committed to the growth of the sport of paddle through unwavering passion, unconventional thinking, and unmatched expertise. Spacious high-performance paddle racket bag inspired and designed by the legendary Fernando Belasteguín. The arrangement of the bag will help you keep all your accessories organized. Interior storage space accommodates an extra pair of shoes during travel.

### MATERIAL / PRODUCT TECHNOLOGY:

100% Polyester.

### REFERENCE:

6H2087318A LAA





# MIKAKUS



## MIKAKUS x CUPRA

The Mikakus x CUPRA collaboration brings together two brands from Barcelona, united by their strong connection to design and innovation. Inspired by the CUPRA Formentor model, the sneakers in this capsule collection feature a contemporary and minimalist style, using high-quality materials like leather, neoprene, and advanced fabrics. Designed for non-conventional individuals seeking exclusivity and comfort, the shoes are equipped with state-of-the-art EVA soles for superior comfort. This partnership marks Mikakus' welcome into the CUPRA Tribe, offering a line that elevates style and design to a new dimension.





# MIKAKUS x CUPRA BORN



## MIKAKUS x CUPRA

### MAIN CHARACTERISTICS:

Choose sustainability and purity of style with the Mikakus x CUPRA trainers in: White, Black, Khaki & Blue. Details inspired by CUPRA's iconic BORN model. Unrivalled comfort and quality. These trainers represent the fusion of two brands with a bold, edgy spirit. They feature a series of graphic details, such as the codes on the back of the soles, evoking the tire code, and a rear loop that alludes to seat belts. This model proves that design can coexist with quality, comfort, and sustainability.

### MATERIAL / PRODUCT TECHNOLOGY:

Water-resistant, eco-friendly canvas. | Upper: Water-resistant recycled fabric (70% recycled cotton, 30% viscose) + leather. | Lining: Recycled fabric (70% recycled cotton + 30% viscose). | Outsole: TR (thermoplastic rubber). | Eyelets: Brass. | Label: 100% recycled cotton. | Laces: 100% cotton. Insole: recycled PU.



# MIKAKUS x CUPRA BORN

## BORN WHITE:



36 | 6H3084351S LCB  
37 | 6H3084351T LCB  
38 | 6H3084351AALCB  
39 | 6H3084351ABLCB  
40 | 6H3084351ACL**CB**  
41 | 6H3084351ADLCB  
42 | 6H3084351AELCB  
43 | 6H3084351AFLCB  
44 | 6H3084351AGLCB  
45 | 6H3084351AHL**CB**  
46 | 6H3084351AJL**CB**

## BORN WHITE:



36 | 6H3084351F LDB  
37 | 6H3084351G LDB  
38 | 6H3084351H LDB  
39 | 6H3084351J LDB  
40 | 6H3084351K LDB  
41 | 6H3084351L LDB  
42 | 6H3084351M LDB  
43 | 6H3084351N LDB  
44 | 6H3084351P LDB  
45 | 6H3084351Q LDB  
46 | 6H3084351R LDB

## BORN BLACK:



36 | 6H3084351 LLA  
37 | 6H3084351A LLA  
38 | 6H3084351B LLA  
39 | 6H3084351C LLA  
40 | 6H3084351D LLA  
41 | 6H3084351E LLA  
42 | 6H3084351F LLA  
43 | 6H3084351G LLA  
44 | 6H3084351H LLA  
45 | 6H3084351J LLA  
46 | 6H3084351K LLA

## BORN KHAKI:



36 | 6H3084351 RS2  
37 | 6H3084351A RS2  
38 | 6H3084351B RS2  
39 | 6H3084351C RS2  
40 | 6H3084351D RS2  
41 | 6H3084351E RS2  
42 | 6H3084351F RS2  
43 | 6H3084351G RS2  
44 | 6H3084351H RS2  
45 | 6H3084351J RS2  
46 | 6H3084351K RS2



# L.G.R



## LGR x CUPRA

The L.G.R x CUPRA collaboration merges the artisanal craftsmanship of L.G.R eyewear with CUPRA's modern and sporty aesthetic. This partnership has resulted in a unique collection of sunglasses that blend L.G.R's classic, handmade design ethos with elements inspired by CUPRA's automotive excellence. Each piece in the collection features high-quality materials and sophisticated details, designed for individuals who value both style and performance. This collaboration embodies a shared passion for innovation and quality, offering a fresh take on eyewear that appeals to discerning customers.





# L.G.R. x CUPRA TRIBE



CUPRA COLLECTION



## L.G.R. x CUPRA

### MAIN CHARACTERISTICS:

100% Handmade in Italy | Metal frame | Acetate eyepieces | Acetate side flaps | Zeiss CR 39 organic lenses | 100% protection of UVA and UVB radiation | 6 layers of anti-reflective coating (interior) | Oleophobic and hydrophobic coating | Anti-scratch | Impact resistant | IR Protection | Filter category.

### MATERIAL / PRODUCT TECHNOLOGY:

Metal frame | Hand polished acetate on temple tips and rims.

### REFERENCES:

BLACK MATT / TECH COOPER: 6H1087900A KCN  
DARK ALUMINIUM / MAGNETIC TECH: 6H1087900A KCA  
GREY / PLASMA: 6H1087900A GAM







# L.G.R. x CUPRA REUNION METAL EXPLORER



## L.G.R. x CUPRA

### MAIN CHARACTERISTICS:

100% Handmade in Italy | Metal frame | Acetate eyepieces | Acetate side flaps | Zeiss CR 39 organic lenses | 100% protection of UVA and UVB radiation | 6 layers of anti-reflective coating (interior) | Oleophobic and hydrophobic coating | Anti-scratch | Impact resistant | IR Protection | Filter category: 3.

### MATERIAL / PRODUCT TECHNOLOGY:

Metal frame | Hand polished acetate on temple tips and rims.

### REFERENCES:

BLACK MATT / TECH COOPER: 6H1087900B KCN  
DARK ALUMINIUM / MAGNETIC TECH: 6H1087900B KCA  
GREY / PLASMA: 6H1087900B GAM





# LGR x CUPRA NOMAD II



## L.G.R. x CUPRA

### MAIN CHARACTERISTICS:

100% Handmade in Italy | Metal frame | Metal nose pads | Sanded cellulose acetate on temple tips and rims | Tempered mineral glass lenses | 100% UV protection | 6 layers of anti-reflective coating (interior) | Oleophobic and hydrophobic coating | Anti-scratch | Impact resistant | IR Protection | Filter category: 3.

### MATERIAL / PRODUCT TECHNOLOGY:

Metal alloy | Metal nose pads.

### REFERENCES:

NOMAD II: 6H1087900C KCX



# PRICE LIST CUPRA

ARTICLE	SEXE	SIZE	ANR-NUMBER	PRICE WITH VAT.	
CUPRA BIG LOGO MOONSLATE T-SHIRT	MAN	XS	6H1084200ABIBJ	CHF	46.00
		S	6H1084200ACIBJ	CHF	46.00
		M	6H1084200ADIBJ	CHF	46.00
		L	6H1084200AEIBJ	CHF	46.00
		XL	6H1084200AFIBJ	CHF	46.00
		XXL	6H1084200AGIBJ	CHF	46.00
CUPRA BIG LOGO ENCELADUS GREY T-SHIRT	MAN	XS	6H1084200ABIAF	CHF	46.00
		S	6H1084200ACIAF	CHF	46.00
		M	6H1084200ADIAF	CHF	46.00
		L	6H1084200AEIAF	CHF	46.00
		XL	6H1084200AFIAF	CHF	46.00
		XXL	6H1084200AGIAF	CHF	46.00
CUPRA BIG LOGO RIO GREEN T-SHIRT	MAN	XS	6H1084200ABHAU	CHF	46.00
		S	6H1084200ACHAU	CHF	46.00
		M	6H1084200ADHAU	CHF	46.00
		L	6H1084200AEHAU	CHF	46.00
		XL	6H1084200AFHAU	CHF	46.00
		XXL	6H1084200AGHAU	CHF	46.00
CUPRA BIG LOGO TOBACCO BROWN T-SHIRT	MAN	XS	6H1084200ABOBQ	CHF	46.00
		S	6H1084200ACOBQ	CHF	46.00
		M	6H1084200ADOBQ	CHF	46.00
		L	6H1084200AEOBQ	CHF	46.00
		XL	6H1084200AFOBQ	CHF	46.00
		XXL	6H1084200AGOBQ	CHF	46.00
CUPRA BIG LOGO WHITE T-SHIRT	MAN	XS	6H1084200ABLAB	CHF	46.00
		S	6H1084200ACLAB	CHF	46.00
		M	6H1084200ADLAB	CHF	46.00
		L	6H1084200AELAB	CHF	46.00
		XL	6H1084200AFLAB	CHF	46.00
		XXL	6H1084200AGLAB	CHF	46.00
CUPRA EMBOSSED LOGO MOONSLATE T-SHIRT	MAN	XS	6H1084200AHIBJ	CHF	56.00
		S	6H1084200AJIBJ	CHF	56.00
		M	6H1084200AKIBJ	CHF	56.00
		L	6H1084200ALIBJ	CHF	56.00
		XL	6H1084200AMIBJ	CHF	56.00
		XXL	6H1084200ANIBJ	CHF	56.00
CUPRA EMBOSSED LOGO ENCELADUS GREY T-SHIRT	MAN	XS	6H1084200AHIAF	CHF	56.00
		S	6H1084200AJIAF	CHF	56.00
		M	6H1084200AKIAF	CHF	56.00
		L	6H1084200ALIAF	CHF	56.00
		XL	6H1084200AMIAF	CHF	56.00
		XXL	6H1084200ANIAF	CHF	56.00
CUPRA EMBOSSED LOGO WHITE T-SHIRT	MAN	XS	6H1084200AHLAB	CHF	56.00
		S	6H1084200AJLAB	CHF	56.00
		M	6H1084200AKLAB	CHF	56.00
		L	6H1084200ALLAB	CHF	56.00
		XL	6H1084200AMLAB	CHF	56.00
		XXL	6H1084200ANLAB	CHF	56.00
CUPRA BIG LOGO MOONSLATE T-SHIRT	WOMEN	XS	6H1084210E IBJ	CHF	46.00
		S	6H1084210F IBJ	CHF	46.00
		M	6H1084210G IBJ	CHF	46.00
		L	6H1084210H IBJ	CHF	46.00
		XL	6H1084210J IBJ	CHF	46.00
		XXL	6H1084210K IBJ	CHF	46.00

CUPRA BIG LOGO ENCELADUS GREY T-SHIRT	WOMEN	XS	6H1084210E IAF	CHF	46.00
		S	6H1084210F IAF	CHF	46.00
		M	6H1084210G IAF	CHF	46.00
		L	6H1084210H IAF	CHF	46.00
		XL	6H1084210J IAF	CHF	46.00
		XXL	6H1084210K IAF	CHF	46.00
CUPRA BIG LOGO RIO GREEN T-SHIRT	WOMEN	XS	6H1084210E HAU	CHF	46.00
		S	6H1084210F HAU	CHF	46.00
		M	6H1084210G HAU	CHF	46.00
		L	6H1084210H HAU	CHF	46.00
		XL	6H1084210J HAU	CHF	46.00
		XXL	6H1084210K HAU	CHF	46.00
CUPRA BIG LOGO TOBACCO BROWN T-SHIRT	WOMEN	XS	6H1084210E OBQ	CHF	46.00
		S	6H1084210F OBQ	CHF	46.00
		M	6H1084210G OBQ	CHF	46.00
		L	6H1084210H OBQ	CHF	46.00
		XL	6H1084210J OBQ	CHF	46.00
		XXL	6H1084210K OBQ	CHF	46.00
CUPRA BIG LOGO WHITE T-SHIRT	WOMEN	XS	6H1084210E LAB	CHF	46.00
		S	6H1084210F LAB	CHF	46.00
		M	6H1084210G LAB	CHF	46.00
		L	6H1084210H LAB	CHF	46.00
		XL	6H1084210J LAB	CHF	46.00
		XXL	6H1084210K LAB	CHF	46.00
CUPRA EMBOSSED LOGO MOONSLATE T-SHIRT	WOMEN	XS	6H1084210S IBJ	CHF	56.00
		S	6H1084210T IBJ	CHF	56.00
		M	6H1084210AAIBJ	CHF	56.00
		L	6H1084210ABIBJ	CHF	56.00
		XL	6H1084210ACIBJ	CHF	56.00
		XXL	6H1084210ADIBJ	CHF	56.00
CUPRA EMBOSSED LOGO ENCELADUS GREY T-SHIRT	WOMEN	XS	6H1084210S IAF	CHF	56.00
		S	6H1084210T IAF	CHF	56.00
		M	6H1084210AAIAF	CHF	56.00
		L	6H1084210ABIAF	CHF	56.00
		XL	6H1084210ACIAF	CHF	56.00
		XXL	6H1084210ADIAF	CHF	56.00
CUPRA EMBOSSED LOGO WHITE T-SHIRT	WOMEN	XS	6H1084210S LAB	CHF	56.00
		S	6H1084210T LAB	CHF	56.00
		M	6H1084210AALAB	CHF	56.00
		L	6H1084210ABLAB	CHF	56.00
		XL	6H1084210ACLAB	CHF	56.00
		XXL	6H1084210ADLAB	CHF	56.00
CUPRA HOODIE ENCELADUS GREY	UNISEX	XS	6H1084130L AIF	CHF	104.00
		S	6H1084130M AIF	CHF	104.00
		M	6H1084130N AIF	CHF	104.00
		L	6H1084130P AIF	CHF	104.00
		XL	6H1084130Q AIF	CHF	104.00
		XXL	6H1084130R AIF	CHF	104.00
CUPRA HOODIE MOONSLATE	UNISEX	XS	6H1084130L IBJ	CHF	104.00
		S	6H1084130M IBJ	CHF	104.00
		M	6H1084130N IBJ	CHF	104.00
		L	6H1084130P IBJ	CHF	104.00
		XL	6H1084130Q IBJ	CHF	104.00
		XXL	6H1084130R IBJ	CHF	104.00



CUPRA CREWNECK SWEATSHIRT MOONSLATE	MAN	XS	6H1084130S IBJ	CHF	104.00
		S	6H1084130T IBJ	CHF	104.00
		M	6H1084130AAIBJ	CHF	104.00
		L	6H1084130ABIBJ	CHF	104.00
		XL	6H1084130ACIBJ	CHF	104.00
		XXL	6H1084130ADIBJ	CHF	104.00
CUPRA CREWNECK SWEATSHIRT RIO GREEN	MAN	XS	6H1084130S HAU	CHF	104.00
		S	6H1084130T HAU	CHF	104.00
		M	6H1084130AAHAU	CHF	104.00
		L	6H1084130ABHAU	CHF	104.00
		XL	6H1084130ACHAU	CHF	104.00
		XXL	6H1084130ADHAU	CHF	104.00
CUPRA CREWNECK SWEATSHIRT TOBACCO BROWN	MAN	XS	6H1084130S OBQ	CHF	104.00
		S	6H1084130T OBQ	CHF	104.00
		M	6H1084130AAOBQ	CHF	104.00
		L	6H1084130ABOBQ	CHF	104.00
		XL	6H1084130ACOBQ	CHF	104.00
		XXL	6H1084130ADOBQ	CHF	104.00

CUPRA CREWNECK SWEATSHIRT MOONSLATE	WOMEN	XS	6H1084140E IBJ	CHF	104.00
		S	6H1084140F IBJ	CHF	104.00
		M	6H1084140G IBJ	CHF	104.00
		L	6H1084140H IBJ	CHF	104.00
		XL	6H1084140J IBJ	CHF	104.00
		XXL	6H1084140K IBJ	CHF	104.00
CUPRA CREWNECK SWEATSHIRT RIO GREEN	WOMEN	XS	6H1084140E HAU	CHF	104.00
		S	6H1084140F HAU	CHF	104.00
		M	6H1084140G HAU	CHF	104.00
		L	6H1084140H HAU	CHF	104.00
		XL	6H1084140J HAU	CHF	104.00
		XXL	6H1084140K HAU	CHF	104.00
CUPRA CREWNECK SWEATSHIRT TOBACCO BROWN	WOMEN	XS	6H1084140E OBQ	CHF	104.00
		S	6H1084140F OBQ	CHF	104.00
		M	6H1084140G OBQ	CHF	104.00
		L	6H1084140H OBQ	CHF	104.00
		XL	6H1084140J OBQ	CHF	104.00
		XXL	6H1084140K OBQ	CHF	104.00

CUPRA TECH T-SHIRT ENCELADUS GREY	UNISEX	XS	6H1084210L IAF	CHF	78.00
		S	6H1084210M IAF	CHF	78.00
		M	6H1084210N IAF	CHF	78.00
		L	6H1084210P IAF	CHF	78.00
		XL	6H1084210Q IAF	CHF	78.00
		XXL	6H1084210R IAF	CHF	78.00
CUPRA TECH T-SHIRT MOONSLATE	UNISEX	XS	6H1084210L IBJ	CHF	78.00
		S	6H1084210M IBJ	CHF	78.00
		M	6H1084210N IBJ	CHF	78.00
		L	6H1084210P IBJ	CHF	78.00
		XL	6H1084210Q IBJ	CHF	78.00
		XXL	6H1084210R IBJ	CHF	78.00
CUPRA POLO TECH ENCELADUS GREY	MAN	XS	6H1084230S AIF	CHF	96.00
		S	6H1084230T AIF	CHF	96.00
		M	6H1084230AAAIF	CHF	96.00
		L	6H1084230ABAIF	CHF	96.00
		XL	6H1084230ACAIF	CHF	96.00
		XXL	6H1084230ADAIF	CHF	96.00

CUPRA POLO TECH MOONSLATE	MAN	XS	6H1084230S IBJ	CHF	96.00
		S	6H1084230T IBJ	CHF	96.00
		M	6H1084230AAIBJ	CHF	96.00
		L	6H1084230ABIBJ	CHF	96.00
		XL	6H1084230ACIBJ	CHF	96.00
		XXL	6H1084230ADIBJ	CHF	96.00
BASEBALL CAP TAIGA	UNISEX		6H1084300C IBB	CHF	53.00
CUPRA SOFTSHELL	UNISEX	XS	6H1084002H AAA	CHF	309.45
		S	6H1084002H AAB	CHF	309.45
		M	6H1084002H AAC	CHF	309.45
		L	6H1084002H AAD	CHF	309.45
		XL	6H1084002H AAE	CHF	309.45
		XXL	6H1084002H AAF	CHF	309.45
CUPRA BOMBER JACKET	UNISEX	XS	6H1084002G AAA	CHF	275.00
		S	6H1084002G AAB	CHF	275.00
		M	6H1084002G AAC	CHF	275.00
		L	6H1084002G AAD	CHF	275.00
		XL	6H1084002G AAE	CHF	275.00
		XXL	6H1084002G AAF	CHF	275.00
CUPRA LEATHER JACKET	MAN	S	6H1084003A KCF	CHF	499.00
		M	6H1084003B KCF	CHF	499.00
		L	6H1084003C KCF	CHF	499.00
		XL	6H1084003D KCF	CHF	499.00
		XXL	6H1084003E KCF	CHF	499.00
CUPRA LEATHER JACKET	WOMEN	XS	6H1084012 KCF	CHF	499.00
		S	6H1084012A KCF	CHF	499.00
		M	6H1084012B KCF	CHF	499.00
		L	6H1084012C KCF	CHF	499.00
		XL	6H1084012D KCF	CHF	499.00
CUPRA WATER BOTTLE		750 ml	6H1069601P	CHF	59.00
CUPRA THERMO CUP		300 ml	6H1069604C	CHF	38.00
CUPRA BIG LOGO WHITE T-SHIRT	KIDS	5-6	6H1084200EN LAB	CHF	39.00
		7-8	6H1084200EP LAB	CHF	39.00
		9-10	6H1084200EQ LAB	CHF	39.00
		11-12	6H1084200ER LAB	CHF	39.00
CUPRA CREWNECK SWEATSHIRT MOONSLATE	KIDS	5-6	6H1084130AJ IBJ	CHF	89.00
		7-8	6H1084130AK IBJ	CHF	89.00
		9-10	6H1084130AL IBJ	CHF	89.00
		11-12	6H1084130AM IBJ	CHF	89.00
CUPRA HOODIE MOONSLATE	KIDS	5-6	6H1084130AE AIF	CHF	89.00
		7-8	6H1084130AF AIF	CHF	89.00
		9-10	6H1084130AG AIF	CHF	89.00
		11-12	6H1084130AH AIF	CHF	89.00
CUPRA BASEBALL CAP	UNISEX		6H1084300C IAJ	CHF	46.00
CUPRA LIGHTWEIGHT CAP	UNISEX		6H1084300D IAJ	CHF	46.00

CUPRA BEANIE BLUE	UNISEX	M-L	6H1084300E IBJ	CHF	46.00
		L-XL	6H1084300G IBJ	CHF	46.00
CUPRA BEANIE IRID	UNISEX	M-L	6H1084300E HAU	CHF	46.00
		L-XL	6H1084300G HAU	CHF	46.00
CUPRA BUCKET HAT	UNISEX	L-XL	6H1084300F GDF	CHF	46.00
CUPRA LANYARD MOONSLATE			6H2087610A IBJ	CHF	18.00
CUPRA LANYARD RIO GREEN			6H2087610A HAU	CHF	18.00
CUPRA CAR KIDS			6H1087500 IAF	CHF	178.00
CUPRA KEYRING			6H1087011 IAA	CHF	26.00
CUPRA AUTOMATIC UMBRELLA BLACK			6H1087600 MAA	CHF	25.00
BRACELET	UNISEX	S-M	6H1050850E	CHF	115.00
		M-L	6H1050850F	CHF	115.00
BRACELET VORONOI	UNISEX		6H1050850G	CHF	130.00
DIPPING LIGHT			6H3052001A LAA	CHF	673.00
CHISPA			6H3052001 LAA	CHF	254.00
CUPRA x CAFÉ DE FINCA CUP			6H1069601K	CHF	23.00
WILSON x CUPRA Padel Racket V2			6H2050539A LAA	CHF	357.00
WILSON x CUPRA Padel Raket LT			6H2050539C LAA	CHF	312.00
WILSON x CUPRA Padel Bag V2			6H2087318A LAA	CHF	143.00
MikakusxCUPRA Born White	UNISEX	36	6H3084351S LCB	CHF	164.00
		37	6H3084351T LCB	CHF	164.00
		38	6H3084351AALCB	CHF	164.00
		39	6H3084351ABLCB	CHF	164.00
		40	6H3084351ACLCB	CHF	164.00
		41	6H3084351ADLCB	CHF	164.00
		42	6H3084351AELCB	CHF	164.00
		43	6H3084351AFLCB	CHF	164.00
		44	6H3084351AGLCB	CHF	164.00
		45	6H3084351AHLCB	CHF	164.00
		46	6H3084351AJLCB	CHF	164.00
MikakusxCUPRA Born Blue	UNISEX	36	6H3084351F LDB	CHF	176.00
		37	6H3084351G LDB	CHF	176.00
		38	6H3084351H LDB	CHF	176.00
		39	6H3084351J LDB	CHF	176.00
		40	6H3084351K LDB	CHF	176.00
		41	6H3084351L LDB	CHF	176.00
		42	6H3084351M LDB	CHF	176.00
		43	6H3084351N LDB	CHF	176.00
		44	6H3084351P LDB	CHF	176.00
		45	6H3084351Q LDB	CHF	176.00
		46	6H3084351R LDB	CHF	176.00

MikakusxCUPRA Born Khaki	UNISEX	36	6H3084351 RS2	CHF	168.00
		37	6H3084351A RS2	CHF	168.00
		38	6H3084351B RS2	CHF	168.00
		39	6H3084351C RS2	CHF	168.00
		40	6H3084351D RS2	CHF	168.00
		41	6H3084351E RS2	CHF	168.00
		42	6H3084351F RS2	CHF	168.00
		43	6H3084351G RS2	CHF	168.00
		44	6H3084351H RS2	CHF	168.00
		45	6H3084351J RS2	CHF	168.00
		46	6H3084351K RS2	CHF	168.00

MikakusxCUPRA Born Black	UNISEX	36	6H3084351 LLA	CHF	168.00
		37	6H3084351A LLA	CHF	168.00
		38	6H3084351B LLA	CHF	168.00
		39	6H3084351C LLA	CHF	168.00
		40	6H3084351D LLA	CHF	168.00
		41	6H3084351E LLA	CHF	168.00
		42	6H3084351F LLA	CHF	168.00
		43	6H3084351G LLA	CHF	168.00
		44	6H3084351H LLA	CHF	168.00
		45	6H3084351J LLA	CHF	168.00
		46	6H3084351K LLA	CHF	168.00

REUNION METAL EXPLORER BLACK MATT / TECH COOPER	UNISEX		6H1087900B KCN	CHF	434.00
REUNION METAL EXPLORER DARK ALUMINIUM / MAGNETIC TECH	UNISEX		6H1087900B KCA	CHF	434.00
REUNION METAL EXPLORER L.G.R GREY / PLASMA	UNISEX		6H1087900B GAM	CHF	434.00
LGRxCUPRA Nomad II	UNISEX		6H1087900C KCX	CHF	328.00

Alle genannten Preise inkl. 8.1% MwSt. Druckfehler, Änderungen und Irrtümer vorbehalten. Angebot solange Vorrat.  
 Alle Angaben zu Preisen, Lieferumfang, Aussehen, Leistungen, Massen und Gewichten entsprechen dem  
 Kenntnisstand zum Zeitpunkt der Drucklegung.» Dazu haben sie dann am Ende des Katalogs das  
 Datum angegeben (Stand: April 2025)





THANK YOU