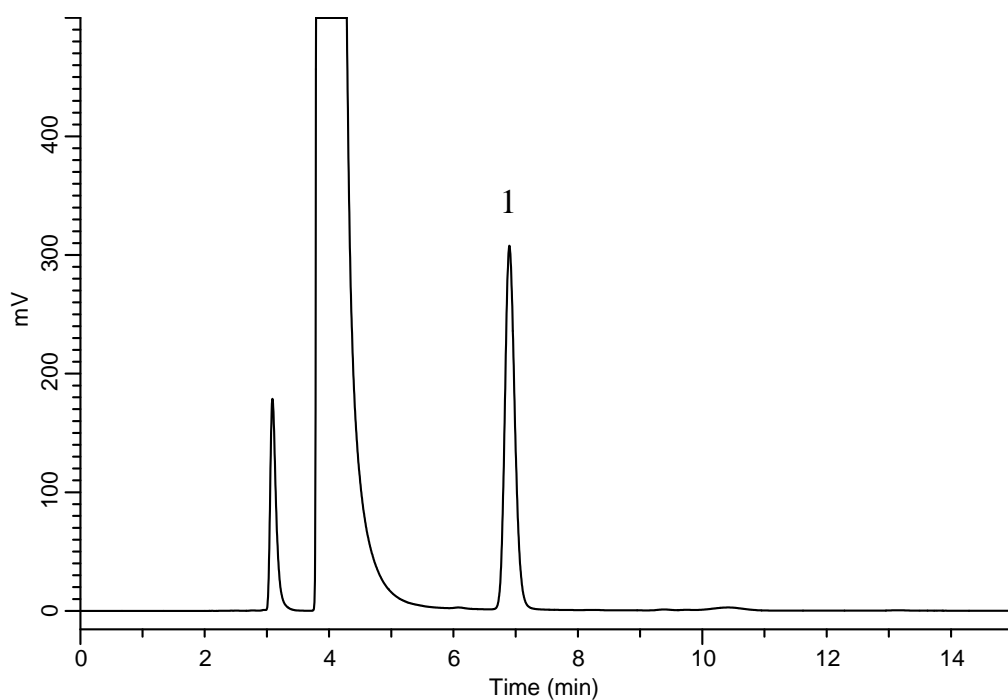


# InertSearch™ for LC

Inertsil® Applications

## Analysis of Taurine derivatized with Dansyl Chloride (DNS-Cl)

Data No. LB336-0848



### Conditions

**System** : GL7700 HPLC system  
**Column** : InertSustain C18  
(5  $\mu$  m, 250 x 4.6 mm I.D.)  
**Column Cat. No.** : 5020-07346  
**Eluent** : A) CH<sub>3</sub>CN  
B) 10 mM CH<sub>3</sub>COONa in H<sub>2</sub>O  
(pH4.2, CH<sub>3</sub>COOH)  
A/B = 30/70, v/v  
**Flow Rate** : 1.0 mL/min  
**Col. Temp.** : Room Temp.  
**Detection** : Ex 330 nm Em 530 nm  
**Injection Vol.** : 20  $\mu$  L  
**Sample** : Standard

### Analyte:

1. Dansyl-Taurine (5.0 mg/L\*)

### \*Derivatization

Taurine (5.0 mg/L) 1.0 mL  
Sodium Carbonate Buffer (80 mM, pH9.5) 1.0 mL  
Dansyl Chloride (1.5 mg/mL) 1.0 mL  
Metyl amine (20 mg/mL) 0.1 mL