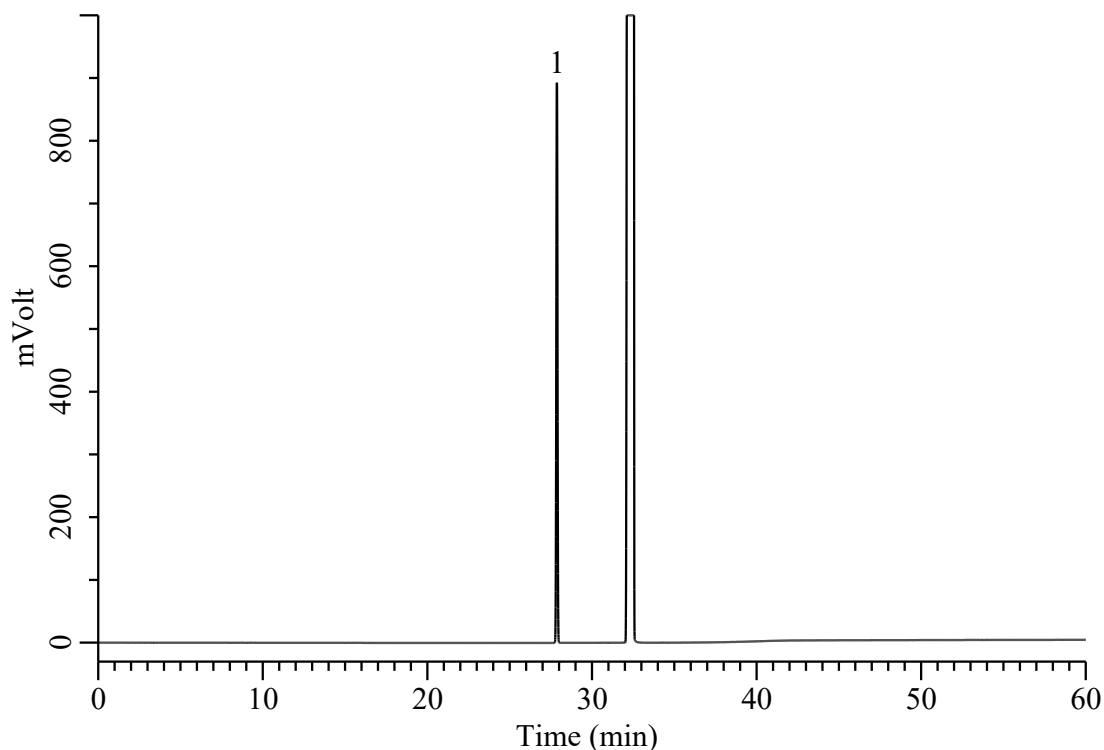


## Analysis of Residual solvents in pharmaceuticals (Class 2E)



### Conditions

**System** : GC-4000 Plus /FID  
**Column** : InertCap 624MS (GL Sciences Inc.)  
           0.53 mm I.D. x 30 m df = 3.0  $\mu$ m  
**Col. Cat. No.** : 1010-64948  
**Col. Temp.** : 40 °C (20 min) - 10 °C/min - 240 °C (20 min)  
**Carrier Gas** : He 2.2 mL/min , Constant Flow  
**Injection** : Split 1 : 20  
           140 °C  
**Detection** : FID Auto Range  
           250 °C  
**Sample** : Japanese Pharmacopoeia Residual Solvent  
           Class 2E Standard  
**Sample Size** : 1  $\mu$ L  
           Analyte in Dimethyl sulfoxide

### Analyte

1. Cyclopentyl methyl ether      0.7 % (w/w)