

Catherine House *New Generation*

Support
Prospectus



Uniting to build the *next*
chapter of Catherine House



Build Her Up

Our History

Catherine House was founded in 1988 by the Sisters of Mercy to address an unmet need for women experiencing homelessness in South Australia.

Originally supported by the South Australian Housing Trust and the City of Adelaide, Catherine House opened with just 12 rooms.

At Catherine House, we honour our long-standing connection to the Mercy tradition, inspired by the life and legacy of Catherine McAuley, the founder of the Sisters of Mercy. Named in her honour, our organisation carries forward her vision of compassion, dignity, and justice for women experiencing homelessness.

Catherine McAuley's unwavering commitment to walking alongside people experiencing hardship continues to guide our mission today. Her belief in practical mercy — offering shelter, education, and support — remains at the heart of everything we do.

We are proud to uphold this legacy, working alongside our community to create pathways toward hope, healing and a positive future for women who access our service in crisis.



Mercy International Centre in Dublin, Ireland

Catherine House and Housing Choices Australia

Catherine House became part of the Housing Choices Australia Group following a merger in 2021, reflecting a shared commitment to doing more together for women experiencing homelessness.

As a subsidiary, Catherine House Inc aligns to Housing Choices Australia's governance framework that ensures strong oversight, transparency and compliance across the group. Housing Choices supports the continued growth and impact of Catherine House through organisational capability and strong internal governance delivered through Housing Choices' National Supportive Services Directorate.

Being part of the Housing Choices Australia Group means:

- Stronger housing pathways: access to a broader range of long-term social and affordable housing.
- Greater stability and sustainability: shared governance, financial strength, systems and risk management that support service delivery.
- Maintained specialisation: Catherine House retains its strong brand, identity, values and specialist focus on supporting women.



For more information on
Housing Choices Australia



Build Her Up

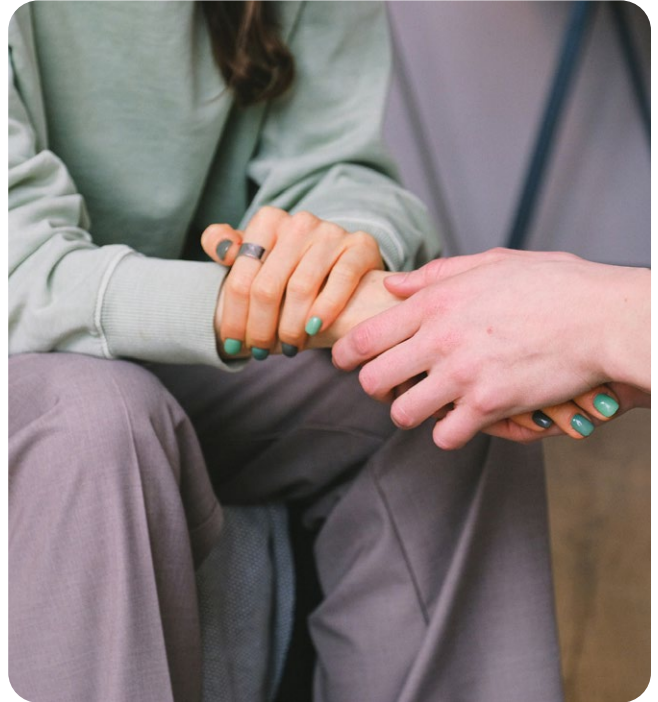
About Catherine House

Catherine House is South Australia's only homelessness and recovery service for women.

Our aim at Catherine House is to end homelessness for every woman who walks through our doors.

Catherine House offers person-centred support and trauma-informed care, focusing on clients' existing strengths and knowledge. Catherine House walks alongside women to address the immediate issues created by homelessness, and assists women in planning a future that helps them sustain housing and financial security, and build purposeful lives.

In addition to our accommodation services, Catherine House offers a number of support services to ensure each woman has the opportunities she needs to recover from a period of homelessness.



Our Support Services

When you are part of one of Catherine House's programs, you can also gain access to the following additional services:



Health services

On-site visiting dental and chiropractic services and referrals to partner services for other health needs.



Counselling services

Including drug and alcohol support through DASSA and Uniting Communities Streelink Plus.



Mental health & NDIS support

Rehabilitation and support with chronic mental health conditions.



Legal and financial services

Immediate and ongoing financial management guidance and on-site visiting lawyers.



Brokerage support

A range of practical supports designed to remove barriers.



Wellbeing and personal development

Offered through our Women's Centre and Education & Employment Program.



Catherine House is *so much more* than a safe bed and a meal.



Intake Service

A first point of contact for women in crisis. It involves compassionate listening and providing strategies and referrals to support women's immediate needs.



Waitlist Support Service

Support provided to women on our waitlist to minimise the impact of or prevent homelessness.



Crisis Accommodation Service

A safe and secure place where women work together with their case worker to access housing.



Supported Bail Program

Partnership with the Department for Correctional Services to provide supported accommodation for women on bail.



Mental Health Programs

Supported accommodation for women experiencing homelessness with a diagnosed mental health condition.



Women's Centre

A wellbeing space designed for women to engage in various courses and activities.



Education and Employment

Skill development, resume support, tutoring, opportunities to access TAFE, WEA, university or employment.



Outreach Support

Additional support for women leaving Catherine House, supporting their transition to living independently.

Build Her Up

More than a Building

This project has been guided by the voices of women who know what's needed – because they've experienced it firsthand.

In 2021, our Lived Experience Research Report captured the perspectives of South Australian women who had accessed homelessness services.

The findings from this research became the foundation for our planning, helping us design a trauma-informed facility shaped by lived experience.



Build Her Up

New Generation

New Generation consists of 52 apartments in the CBD of Adelaide to co-locate five specialist women's accommodation programs into a single integrated service site with a dedicated Women's Centre.

This building will transform the existing Catherine House from a congregate living model (36-beds) into 52 self-contained accessible apartments within a modern, safe and secure building.

Key facts

- Eight stories high
- Each residential floor includes consultation and community spaces in various configurations driven largely by the cohort populating that floor
- Secure on-site parking for drop-off and pick up along with lockable bicycle storage
- Secure private outdoor garden with amenities including seating, BBQ and a produce garden
- High level security
- Energy efficient – seven star rating
- Rooftop solar panels
- Materials with low embodied energy, low miles and low emissions, promoting wellness

Operational efficiencies will deliver approximately *\$600k per annum benefit* to Catherine House, unlocking valuable philanthropy to dedicate to future new build housing for women.

New Generation

Catherine House includes

- 20 self-contained crisis apartments for women
- 20 transitional accommodation apartments
- 12 affordable long-term rental apartments
- PLUS on-site Women's Centre incorporating:
 - A multi-purpose wellness space
 - Craft/cooking/activity spaces with storage
 - Lounge, relaxation and contemplation spaces
 - Private 1:1 meeting rooms
 - Staff room with sleepover unit
 - Large domestic kitchen to support shared meals as required
 - Computer training space/kiosk
 - Outdoor seating and garden



Current rooms for women in Catherine House's Crisis Accommodation

Our current Catherine House accommodation is leased, and no longer meets contemporary accommodation expectations. Multiple congregate living sites, small single bedrooms, shared bathroom and kitchens, and maintenance problems limit our ability to meet the needs of the women we support.

Through our partnership with Housing Choices, our New Generation building project will become the centrepiece of a new operating model for Catherine House. Fully owned and operated, delivering new self-contained apartments into our model, allowing greater flexibility to accommodate the varying needs of women, including options for accompanying children, disability accessibility, car parking and pets.

New Generation Catherine House is made possible through the valued support of the SA Housing Trust, Treasury, Housing Australia and the philanthropic community of Catherine House.



More women will have access to *vital crisis accommodation* and *trauma-informed recovery services* delivered in a single 24/7 operation.

Places across Catherine House programs will grow from 60 to *76 safe places* for women each night.

Jaylee Cooper
Manager, Philanthropy and Engagement

A Lasting Tribute of Gratitude

New Generation Catherine House will transform the way we support women experiencing homelessness in South Australia. By supporting this project, you will help provide a safe, dignified space where women can start rebuilding their lives.

Through philanthropy, supporters have the opportunity to be part of a first of its kind initiative in South Australia—creating lasting impact for women in our community, now and for generations to come.

Each sponsored apartment, common area or fit out represents a meaningful act of generosity, supporting recovery with safety, hope and dignity at its core.

Philanthropic contributions will be acknowledged with sincere appreciation. Recognition opportunities include name or logo acknowledgment for the support of apartments and common areas, with dedicated plaques and naming boards providing a lasting tribute. For gifts of \$100,000 and above, Catherine House will work with supporters to tailor recognition in line with individual preferences.

Supporting a studio, one bedroom or two bedroom apartment provides far more than accommodation. It offers privacy, stability and a place of healing—ensuring that when a woman arrives, often during crisis, she is met with comfort and the foundations needed to begin her recovery. For many, it will be the first time in a long while that they have their own front door.

Support for apartment fit outs enables each space to become a warm and welcoming home, fully furnished with quality furniture, appliances,



*Visual only, dedicated plaques to be designed.

kitchenware and linen. Fit out sponsorships are recognised for a five year period, with first right of renewal offered to the founding sponsor.

Philanthropic support for the Women's Centre will bring this vital shared space to life, including the communal kitchen, wellbeing and education rooms, and areas for reflection and connection. Thoughtfully designed to foster dignity, belonging and empowerment, the Centre will provide women with the tools and support they need to move forward and build a more stable future.

New common areas can be funded through *multiple donors*, creating a shared opportunity to make a meaningful impact.

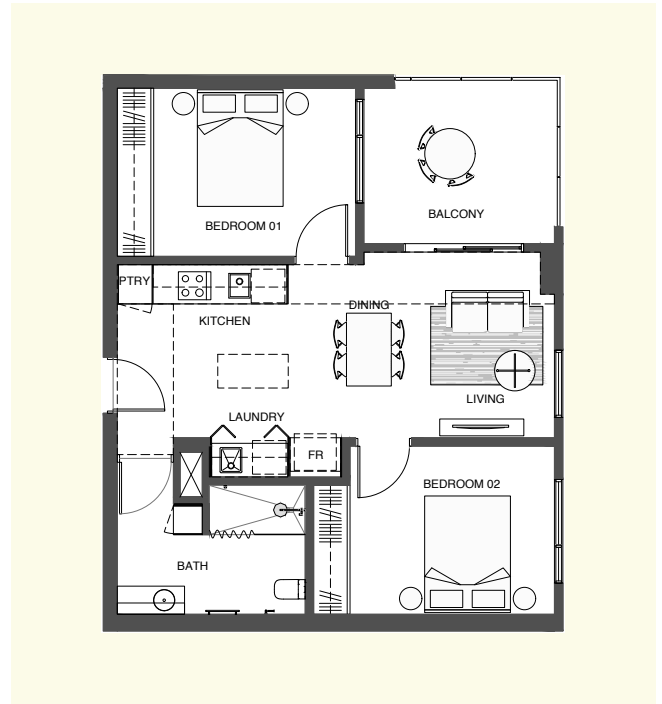
All donations to New Generation Catherine House are *tax deductible* and may be paid over *two financial years*. Longer term arrangements can be discussed upon request.

Build Her Up

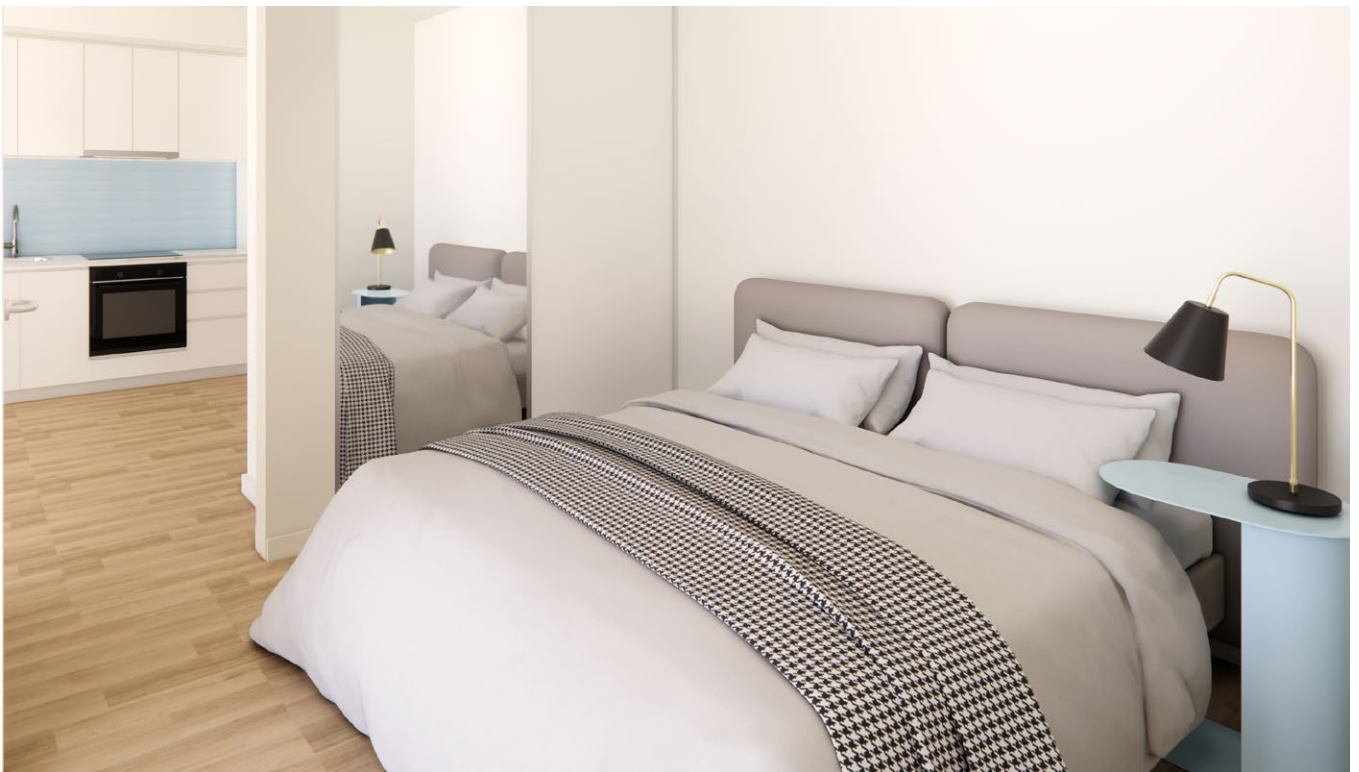
Support Options Apartments

Each New Generation Catherine House apartment has its own integrated facilities, including:

- Kitchenette
- Bathroom
- Laundry facilities
- Secure, private balcony
- Storage



Two Bedroom Apartment floorplan



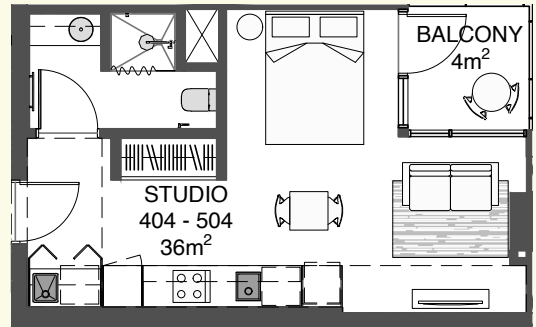
Two Bedroom
Apartment

\$550,000

Cost per
Apartment

4

Two Bed Apartments
Available for sponsorship



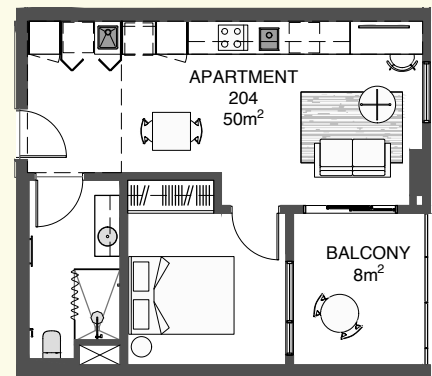
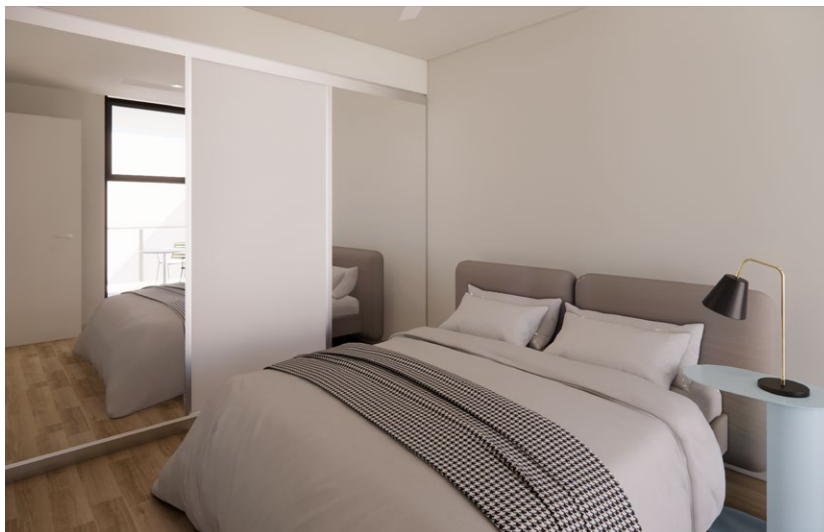
Studio
Apartment

\$345,000

Cost per
Apartment

20

Studio Apartments
Available for sponsorship



One Bedroom
Apartment

\$410,000

Cost per
Apartment

28

One Bed Apartments
Available for sponsorship

Build Her Up

Support Options Apartment Fit Out

With the support of the community and our partners, Catherine House will be fitting out the entire 52 apartments for women in our care.

This includes:

- Furniture
- Electrical – including TV, microwave, refrigerator & dishwasher
- Kitchen – including plates, bakeware and cutlery
- Linen

Furniture selection

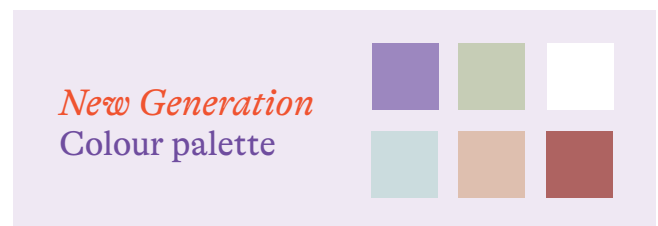
Each piece of furniture has been chosen not only for durability and style, but also for its ability to provide warmth, dignity, and a sense of home.



The Significance of Colour

The interior design of New Generation Catherine House will be guided by a thoughtful use of colour, with each shade carrying symbolic meaning.

The palette is both practical and purposeful, drawing on recognisable associations:



Purple and Green drawn from the Catherine House brand identity and, when paired with white, symbolise the women's movement. They are also globally recognised as the colours of International Women's Day.

White represents new beginnings.

Purple signifies dignity, loyalty, justice.

Green symbolises hope.

Blue denotes stability, reliability and rest.

Pink is soothing and calming.

Terracotta is reflective of the rich ochres of the Australian landscape.





Studio *Apartment*

\$10,000
Cost per
Fit out

20
Studio Apartment
Fit outs available



One Bedroom *Apartment*

\$15,000
Cost per
Fit out

28
One Bed Apartment
Fit outs available



Two Bedroom *Apartment*

\$25,000
Cost per
Fit out

4
Two Bed Apartment
Fit outs Available

Build Her Up

Support Options Common Areas



Women's Centre Common Room

\$405,000



Communal Kitchen

\$530,000



Wellbeing and Education Room

\$495,000



Computer Kiosk
\$235,000



Dining Room
\$355,000



Outdoor Space
\$150,000

This includes:
Soft landscaping including irrigation system,
BBQ area, benches and planter boxes.



For more information or to support New Generation Catherine House, please contact



Jaylee Cooper
Manager of Philanthropy & Engagement

JayleeC@catherinehouse.org.au
0403 322 703

Our Holistic Model *of Support*



Catherine House
is *so much more* than
a safe bed and a meal

My first night
at Catherine House
was filled with
many emotions.

I remember when I walked through those doors for the first time, such a weight was lifted off my shoulders. I felt safe for the first time in years. There was no judgment from the staff and everyone was friendly.

It was such a good feeling and all of my nerves about being there just disappeared on the spot. I remember going back to my room that first night and I really liked that everyone had their own rooms and we could lock the door if we wanted to and we each had our own space.

After being homeless for six months, this was a relief.

I just knew that
I was going to be okay.

For all enquiries related to
New Generation Catherine House

Jaylee Cooper
Manager of Philanthropy & Engagement

JayleeC@catherinehouse.org.au
0403 322 703

Published
March 2026

Uniting to build the *next*
chapter of Catherine House

