

2024 Annual report



Letter from John List and Julio Elías.

We are pleased to share with you the 2024 Annual Report of the Joint Initiative for Latin American Experimental Economics (JILAE), created in 2018 as a partnership between the University of Chicago and Universidad del CEMA. JILAE was founded with the goal of advancing experimental economics in Latin America, combining rigorous fieldwork with the distinctive empirical approach of Chicago Economics.

Among the highlights of 2024, we advanced projects on the impact of public security forums on institutional trust in Buenos Aires; the effects of scholarships and mentoring on school attendance; parenting beliefs in rural Argentina; and reducing gender gaps through a redesigned introductory economics course. We welcomed visiting scholars from institutions including UC Davis, Durham University, University of Exeter, and Middlebury College through our JILAE Visiting Fellow Program, and continued our tradition of onsite seminars followed by lunch discussions that encourage research dialogue.

Our researchers presented at leading international conferences — including ESA, LACEA, and AFE — and we are proud of our growing team of research assistants and predoctoral researchers, many of whom took on leadership roles in data collection and analysis.

Looking ahead to 2025, we are delighted to welcome Bea Ahumada (University of Pittsburgh), who will join JILAE as a postdoctoral researcher. We have also launched a new course in experimental economics, furthering our mission of training scholars interested in using field experiments to study economic and social issues in Latin America.

As always, we are grateful to the community that supports JILAE's mission: to generate rigorous experimental evidence to inform public policy and contribute to economic and social development in the region.

John List & Julio Elías

TABLE OF CONTENTS

- 1** About JILAE and it's Team
- 6** Visitors
- 8** Scientific publications and working papers
- 10** In progress projects
- 13** Collaboration from JILAE's RAs
- 19** In-progress projects outside JILAE
- 22** Seminars and conference presentations given by JILAE researchers during 2023.
- 24** Other professional activities
- 25** Affiliated researchers that started projects using resources from JILAE
- 26** JilAE Online & on site seminars

About the initiative

The Joint Initiative for Latin American Experimental Economics (JILAEE) was created at the end of 2018 as a partnership between the University of Chicago and Universidad del CEMA. The main objective of the Initiative is to design field experiments with the distinctive approach of Chicago Economics to offer new perspectives in various areas of economic research for Latin American countries, including early childhood development, education, private provision of public goods, social preferences, and environmental economics.

To carry out its mission of developing the area of experimental economics in Latin America JILAEE has embarked on a program of outreach, education, and research, offering courses, seminars, and workshops to UCEMA and Latin American students. The Initiative prepares and supports innovative scholars who apply economic analysis, through field experiments, to our most challenging social and political problems.

JILAEE is based at UCEMA (building Av. Córdoba 637, 3rd floor) and also operates at the Kenneth C. Griffin Department of Economics of the University of Chicago under the Experimental Group of John List.



Joint Initiative for
Latin American
Experimental
Economics



Directors team



John List
Scientific Director



Julio Elías
Executive Director



Karen Ye
Director



Julia Seither
Director



Jared Gars
Director of partnerships



Gwen-Jiro Clochard
Director



Luca Henkel
Director



Diana Smith
Associate director



Carolina Bayón
Echenique
Managing director

The Initiative is directed by John A. List, Professor of Economics at the University of Chicago, and Julio Elías, Professor of Economics at Universidad del CEMA. Diana Smith is our Associate Director based in Chicago and Carolina Bayón Echenique is our Managing Director based in Buenos Aires. Julia Seither (Assistant Professor, Universidad del Rosario) and Karen Ye (Assistant Professor, Queen's University) and Gwen-Jiro Clochard (Assistant Professor, University of Osaka) and Luca Henkel (Assistant Professor of Finance (tenure-track) at the Erasmus University Rotterdam) are Directors. Jared Gars (Assistant Professor at FRED) is JILAEE's Director of Partnerships.

RA team



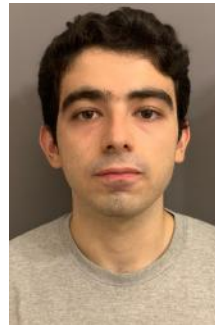
Franco Albino
UCEMA



Juan Cruz Duhalde
UCEMA



Marco di Giacomo
UCEMA



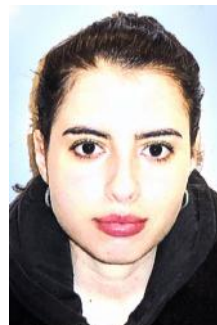
Bruno Pelaccini
UCEMA



Adam Rangel
UCHICAGO



Clara Pinasco
UCEMA



Martina Lacombe
UCEMA



Juan Martín Favetto
UCEMA



Tomás Villar
UCEMA



Dasha Khamaza
UCHICAGO



Octavio Pujalte
UCEMA



Erin Atacan
QUEEN'S UNIVERSITY



Ahmad Nadi
UCHICAGO



Tomas Kay
UCHICAGO

We also have a team of 13 Research Assistants (RAs). Some of them are based in Buenos Aires and are from Universidad del CEMA, and some of them are from Queen's University, Canada, and some come from John List's team based at the University of Chicago. During 2024 we hired our first Predoctoral Research Professional (former JILAEE RA) Franco Albino who was hired by John List to work as Predoctoral Research Professional at UChicago. Filling his place we hired Juan Cruz Duhalde, also former RA and graduated from UCEMA.

Afiliated



Jesse Backstrom
Assistant Professor at Texas State University



Andy Brownback
Associate professor of economics, University of Arkansas



Tabaré Capitán
Post Doc at Swedish University of Agricultural Sciences



Anujit Chakraborty
Assistant Professor of Economics at UC Davis



Jeffrey Flory
Associate Professor of Economics, Claremont McKenna College



Andrés Gago
Assistant Professor at Universidad Torcuato Di Tella Business School



Camila Galindo
Assistant Professor of Economics, Universidad de los Andes.



Sebastián Gallegos
Assistant Professor of Economics at the UAI Business School, Chile.



Jana Gallus
Associate Professor (with tenure) UCLA Anderson Strategy and Behavioral Decision Making



Ana García-Hernandez
Senior Policy and Research Manager J-PAL Europe



Carlos Gómez González
Senior Lecturer at University of Lausanne



Justin Holz
Assistant Professor at the Ford School of Public Policy at the University of Michigan



Brian Jabarian
Howard and Nancy Marks Principal Researcher at the University of Chicago Booth School of Business.

From the University of Chicago, several researchers work with us, including Dr. Dana Suskind, Professor at UChicago Medical Center, Founder.

Researchers



Daniel Lema
Professor of Economics, Universidad del CEMA and INTA



Diego Mariño Fages
Assistant Professor at Durham University



Catherine Michaud-Leclerc
Assistant Professor in the department of Economics at Laval University



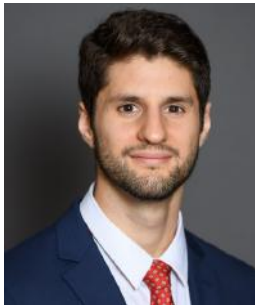
Julie Pernaudet
Senior Research Associate, University of Chicago



Giovanni Ponti
Professor of Economics, University of Alicante



Lina Ramírez
Predoctoral Research Professional on the Chicago Experiments Initiative, University of Chicago



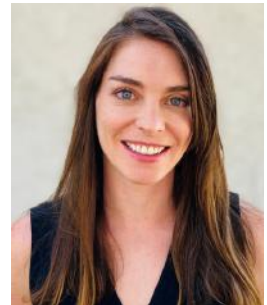
Germán Reyes
Assistant Professor in the Economics Department at Middlebury College



Matthias Roddemeier
Assistant Professor, Bocconi. Research Scholar, UChicago. Research Affiliate, IZA, IGIER, BAFFI CAREFIN, JILAEE



Sally Sadoff
Associate Professor Economics and Strategic Management Rady School of Management, UC San Diego



Jessica Londeree Saleska
Postdoctoral Scholar, University of California - Los Angeles



Egon Tripodi
Assistant Professor of Economics at the Hertie School



Alejandro Zentner
Professor of Economics, University of Texas, Dallas



JILAEE researchers are based at universities and research institutes worldwide and contribute to JILAEE's mission with their expertise and research capacities.

JILAEF's visitors

During 2021 JILAEF created the Visiting Fellows Program inviting scholars and researchers around the world to visit us in Buenos Aires and investigate topics in behavioral and experimental economics. We prioritize researchers whose work is related to the work of JILAEF's researchers, those who would like to collaborate with some of our research partners, and also, those who are generally interested in experimental research in Latin America. These research projects, and the work conducted by visiting fellows, represent an important component of JILAEF's mission to use insights from behavioral and experimental economics to reduce inequality and promote economic betterment in Latin America. Visiting fellows receive an allowance for travel, living and housing expenses. They have their own desk at the offices of JILAEF in UCEMA, and they join JILAEF such as seminars, team meetings and social activities.

This program also attracted many visitors who came to Buenos Aires by their own means.

During 2023 we successfully continued with on site seminars followed by lunch where the discussions and other researcher's contributions continue.



along 2024

- June 5 to June 27: Anujit Chakraborty (UC Davis).
- July 17 to August 23: Diego Mariño Fages (Durham University).
- December 11 to December 20: Germán Reyes (Middlebury College).



Scientific publications



- Luca Henkel, Anujit Chakraborty. **The Role of Interpersonal Uncertainty in Prosocial Behavior**. Working paper



- Gwen-Jiro Clochard, Carlos Gomez-Gonzalez and Marco Henriques Pereira. **Managers' Networks and their Impact on Hiring and Performance**. ISER Discussion Paper
- Gwen-Jiro Clochard, Majid Ahmadi, Jeffrey Lachman and John List. **Toward an Understanding of Discrimination: The Case of Parsing Multiple Sources**. NBER Working Paper.
- Gwen-Jiro Clochard, with Guillaume Hollard and Omar Sene. **Bringing Contact Interventions to the Lab: Effects of Bilateral Discussions on Interethnic Trust in Senegal**. Working Paper
- Gwen-Jiro Clochard, **Reducing prejudice: A Meta-Analysis and Experiment on the Contact Hypothesis**. Working Paper
- Gwen-Jiro Clochard, Carlos Gomez-Gonzalez, Helmut Dietl and Juan Cruz Duhalde. **A large-scale field experiment to disentangle sources of statistical discrimination in a social setting**.
- Gwen-Jiro Clochard. **Assessing private solutions to collective action problems in a 34-nation**. Study
- Gwen-Jiro Clochard with many coauthors. **When Robots Think and Feel, Will Trust Disappear?**. Working Paper
- Gwen-Jiro Clochard. **Improving the Perception of the Police by the Youth**. Working Paper

and working papers



- Julia Seither, John A. List, Lina Ramirez, Jaime Unda, and Beatriz Vallejo. **Critical Thinking and Misinformation Vulnerability: Experimental Evidence from Colombia.** PNAS Nexus, Volume 3, October 2024.
- Julia Seither, Megan Lang. **Entrepreneurship Training and Economic Resilience: Evidence on Building Skills for Women.** Working paper. Under Review.
- Julia Seither, Maria Sofia Casabianca and Megan Lang. **Scaling Skills.** Working paper. Submitted.
- Julia Seither, Catia Batista, Lara Bohnet, and Jules Gazeaud. **Integrating Immigrants as a Tool for Broader Development: Experimental Evidence for Portugal and Cape Verde.** Working paper.



- Julio Elías, Walter Castro. **Injecting Adam Smith's Ideas in the Market for Kidney Transplants.** Adam Smith Review, Vol. 14, 2024
- Julio Elías, Nicola Lacetera, Mario Macis, Axel Ockenfels, Alvin E Roth. **Quality and safety for substances of human origins: scientific evidence and the new EU regulations.** BMJ Global Health, Volume 9, Issue 4 (21 April, 2024).
- Julio Elías, Frederike Ambagtsheer, Eline Bunnik, Liset H.M. Pengel, Marlies Reinders, Nicola Lacetera and Mario Macis. **Public opinions on removing disincentives and introducing incentives for organ donation: proposing a European research agenda.** Transplant International, 37, 12483, 2024.
- Julio Elías, Mauro Alem and Ignacio Penagos Montoya. **Impactos indirectos de la inversión en infraestructura de transporte: una metodología para construir contrafactuales.** Nota Técnica, Banco Inter Americano de Desarrollo, 2024.

In progress



- Daniel Evans, Luca Henkel, John A. List, Brian Jabarian. ***Evaluating and Improving Scientific Knowledge from Experiments.***



- Gwen-Jiro Clochard, Carlos Gomez-Gonzalez, Helmut Dietl and Juan Cruz Duhalde. ***A large-scale field experiment to disentangle sources of statistical discrimination in a social setting.***
 - This paper considers two types of statistical discrimination: individual (productivity) and collective (team fit). We conduct a large-scale correspondence study in 15 Latin American countries in the context of sports to test their influence on individual behavior. We send over 10,000 applications to male amateur soccer clubs and ask them to participate in a practice session. Each club receives one application, randomly varying the applicant's origin and signals about individual and collective productivity. We find no evidence of discrimination against immigrants overall, but we observe heterogeneity that is consistent with individual statistical discrimination. Productivity signals have no significant influence.
- Gwen-Jiro Clochard, Franco Albino. ***Citizen Information and Trust in Institutions: Evidence from the Foros de Seguridad Pública in Buenos Aires.***
 - While the effects of participating in community-empowerment programs, such as participatory budgets or community policing, on trust in government and institutions, has been extensively studied, much less is known about the effects of information campaigns in themselves on trust. In this paper, we randomly provide information about town hall meetings about security issues, organized by the city of Buenos Aires, Argentina and investigate its

projects



- effect on trust in the police and the city government. We find that the treatment had a marginal effect on trust in the city government, who organize the events, but no significant effect on trust in the police. Interestingly, the treatment affects trust through information only, as no treatment effect on participation is detected.
- Gwen-Jiro Clochard, Tomas Kay. ***Understanding the Effects of Scholarships and Guidance on Attendance in Argentina.***
 - Partner: Las Tunas ONG Buenos Aires.
 - We are developing an experiment with Las Tunas, an NGO that provides extracurricular activities, scholarships and guidance to students in a city in the Buenos Aires province. We will randomize access to this program, and evaluate the effect on a range of outcomes, the primary being dropout rates.



- Julia Seither, Julie Pernaudet, Karen J. Ye. ***Parental Beliefs about Child Development: Folk vs. Expert Knowledge.***
 - Policymakers commonly use information campaigns to shift individuals' beliefs and behaviors. However, the effectiveness of those policies may be limited if the information provided goes against prevalent community beliefs. We focus on the context of early parenting practices, where beliefs about early skill formation have been shown to be important determinants of parental investments, and subsequently, child outcomes. This paper explores how signals sent by experts or policymakers interact with signals sent by community members in people's belief updating process. We conducted an artefactual field experiment among

In progress projects



- 18 villages in the province of Tucumán, Argentina, and exogenously varied exposure to scientific information and exposure to beliefs held by friends or other village members. We find that while participants initially update their beliefs about parenting when presented with scientific evidence, these changes can be reversed when confronted with conflicting community beliefs. Furthermore, taking the randomly selected lab participants as seeds in their community network, we show that the impacts on parenting beliefs do spread to the rest of the village but only along some of our dimensions of parental beliefs.
- Julia Seither, Camila Galindo. ***We are What We Teach: Breaking Gender Gaps with an Innovative Introductory to Economics Course.*** At Universidad de los Andes.
 - During admission interviews in Colombia aspiring Economics students often cite their passion for math as a study field selection criterion. This anecdotal evidence suggests that students might have limited information about the range of topics economists work on, what they will study, and the different sectors they could work in as economists. In contexts with strong gender norms and stereotypes these information barriers are likely to contribute to the gender gap we observe in Economics. Additionally, the perception of a negative role of economists in society and the lack of inclusiveness and diversity in the profession is permeating the popular discourse in Colombia and Latin America, which might further discourage female students from entering our profession. We propose to evaluate an education intervention that aims at tackling information barriers by teaching Economics as an intuitive, gender-neutral science.

Collaboration from JILAEE's RAs



Bruno Pelaccini:

- Gwen-Jiro Clochard, Franco Albino .***Citizen Information and Trust in Institutions: Evidence from the Foros de Seguridad Pública in Buenos Aires.***
 - Participated in the FOSEP project surveying participants. Later on participated in the analysis of the data collected.
 - Worked with: Juan Cruz Duhalde, Juan Martin Favetto, Clara Pinasco and Martina Lacoma.
- Diego Marino Fages. ***Inherited effects of the military conscription.***
 - Performed the data cleaning from the results of the surveys.
 - Worked with: Clara Pinasco
- Worked throughout the year in the coding of the surveys for various Luca Henkel experiments on Behavioural Finance carried out in Germany.
- Performed data gathering for German Reyes' research on the evolution of speech of Latin American political leaders.



Juan Cruz Duhalde:

- Daniel Evans, Luca Henkel, John A. List, Brian Jabarian. ***Evaluating and Improving Scientific Knowledge from Experiments.***
- Gwen-Jiro Clochard, Carlos Gomez-Gonzalez, Helmut Dietl and Juan Cruz Duhalde. ***A large-scale field experiment to disentangle sources of statistical discrimination in a social setting.***
 - Collect data, coordinate and conduct the experiment.
 - Worked with: JM Favetto, Martina Lancoma, Franco Albino, Federico Obermann, Tomas Kay.

Collaboration from



- Gwen-Jiro Clochard, Franco Albino. ***Citizen Information and Trust in Institutions: Evidence from the Foros de Seguridad Pública in Buenos Aires.***
 - Conduct Interviews for the experiment.
 - Worked with: JM Favetto, Martina Lancoma, Clara Pinasco, Bruno Pellacini, Franco Albino.
- Luca Henkel, Anujit Chakraborty. ***The Role of Interpersonal Uncertainty in Prosocial Behavior.***
 - Data analysis and visualization.



Marco Di Giacomo:

- Diego Marino Fages. ***Inherited effects of the military conscription.***
 - I help digitalize a series of surveys conducted in the province of Entre Rios
 - Worked with: Clara Pinasco, Bruno Pelaccini, Juan Cruz Duhalde, Juan Martin Favetto
- Luca Henkel. ***Interview AI.***
 - I helped with multiple tasks ranging from programming econometric estimators, creating graphs and tables, to doing research on the state of the call center industry in the Philippines.
- Diego Mariño Fages. ***Replication experiment.***
 - Programmed a series of econometric replications using Stata.
- Luca Henkel. ***Cryptocurrencies.***
 - Conducted a literature review regarding marketing and behavioral finance experiments related to cryptocurrencies.

JILAEE's RAs



Juan Martín Favetto

- Gwen-Jiro Clochard, Franco Albino. ***Citizen Information and Trust in Institutions: Evidence from the Foros de Seguridad Pública in Buenos Aires.***
 - I did interviews in the street.
 - Worked with Franco Albino, Bruno Pelaccini and Martina Lacom.
- Diego Marino Fages. ***Inherited effects of the military conscription.***
 - I transcribed questionnaires.
- Karen Ye and Jiwon. ***Parent intervention in Saudi Arabia.***
 - I conducted two literature reviews, one at the beginning of the project and then another one, more focused.



Franco Albino

- Gwen-Jiro Clochard, Franco Albino. ***Citizen Information and Trust in Institutions: Evidence from the Foros de Seguridad Pública in Buenos Aires.***
 - I led the entire data collection process for this project. This included assembling and managing teams of research assistants, as well as hiring external staff to carry out fieldwork across all 15 administrative districts (Comunas) of Buenos Aires. The field teams conducted baseline interviews with individuals working in businesses and implemented the randomized treatment. They later returned to the same businesses to administer endline surveys.
 - Worked with: The full RA team from March 2024 participated in

Collaboration from



- this effort: Marco, Juan Martín, Juan Cruz, Martina, Bruno, and Clara.
- Gwen-Jiro Clochard, Carlos Gomez-Gonzalez, Helmut Dietl and Juan Cruz Duhalde. ***A large-scale field experiment to disentangle sources of statistical discrimination in a social setting.***
 - I assisted in the data collection process by gathering the contact information of amateur football clubs, sending emails to those clubs and then collecting responses.
 - Other RAs were involved but I didn't collaborate directly with them."



Tomás Villar:

- Daniel Evans, Luca Henkel, John A. List, Brian Jabarian. ***Evaluating and Improving Scientific Knowledge from Experiments.***
 - I reviewed replications of priming experiments in order to get a better understanding of how they were conducted.
- Gwen-Jiro Clochard, Franco Albino. ***Citizen Information and Trust in Institutions: Evidence from the Foros de Seguridad Pública in Buenos Aires.***
 - I ran regressions to estimate the effects of treatment on trust on government (both national and local) and police. Also contributed making a calendar with all the relevant dates of the experiment.
 - Worked with: Bruno Pelaccini.
- Gwen-Jiro Clochard. ***The effect of the 7R allele at the DRD4 locus on risk tolerance is independent of background risk in Senegalese fishermen.***

JILAEE's RAs



- I filtered and merged data to then be able to run regressions to find relations between genes and risk preferences.
- Luca Henkel. ***Debates experiment.***
 - I did a literature review on economic papers that studied debates using laboratory and online experiments.
- Luca Henkel. ***AI Interviews project.***
 - I modeled different variable costs structures for AI interviews.
- Franco Albino (John List's team). ***Financial Literacy intervention.***
 - I made a summary of a literature review on financial literacy interventions conducted on high school children.
- Franco Albino (John List's team). ***Multiple hypothesis testing.***
 - I used an API to get meta-data from every economics paper published by top five journals between 2023 and 2025. Also designed a code to get the pdf's of those papers.



Erin Atacan

- Luca Henkel. ***Identity priming impact on charitable giving.***
 - I pre-processed free-form survey responses to questions about charitable giving using Python's NLTK library. I applied TF-IDF vectorization to generate similarity matrices and used cosine similarity to compare treatment and control groups. I leveraged textual similarity to assess the impact of location-based priming in donation letters on both recipient selection and donation destination.

Collaboration from JILAEE's RAs



Clara Pinasco

- Gwen-Jiro Clochard, Franco Albino. ***Citizen Information and Trust in Institutions: Evidence from Public Security Forums in Buenos Aires.***
 - I assisted with conducting surveys in local neighborhoods and followed up on project logistics.
- Diego Marino Fages. ***Inherited Effects of Military Conscription.***
 - I was responsible for questionnaire data entry.
- Michael A. Kuhn, John A. List, Sally Sadoff, Karen J. Ye. ***Learning by Teaming: How team structure and incentives affect workplace learning.***
 - I developed a whisker test using JavaScript to automate instruction validation for the online Scratch-based component of the project.
 - I performed a text classification task using Python and machine learning to score group chat messages. I used a Random Forest classifier trained on TF-IDF features to predict message types, and applied a custom keyword-based scoring algorithm to measure the balance between offering and requesting help among team members.

In-progress projects outside JILAE



- Luca Henkel, Christoph Oslislo and Frederik Schwerter. ***Priming, Interference and Economic Choice***



- Gwen-Jiro Clochard, Yuki Takahashi and Samuel Balkovic (University of Tillburg). ***Legacy of Discrimination Based on Wrong Beliefs: Evidence from Minamata Disease.***
- Faisal Kattan and John List (Chicago). ***\$10 a day to stop smoking.***
- Gwen-Jiro Clochard, Yuki Takahashi (Tillburg). ***Increasing Roma Children's Aspirations Through Stories About Their Ethnic History.***
- Gwen-Jiro Clochard, Taisuke Imai and Shusaku Sasaki (Osaka University) ***Replication for charitable giving.***
- Gwen-Jiro Clochard, Thomas Colaguri (Chicago), Kevin Lee (Booth School of Business) and John List (Chicago). ***Efficient and Valid Within-Subject Designs.***
- Gwen-Jiro Clochard, Faisal Kattan and John List. ***Beliefs about Smoking Risks in Saudi Arabia.***
- Gwen-Jiro Clochard, Faisal Kattan and John List. ***Commitment Contracts and Smoking in Saudi.***
- Gwen-Jiro Clochard, Shubham Dey, Taisuke Imai and Shusaku Sasaki. ***Price of charity and donations: Meta Analysis.***
- Gwen-Jiro Clochard, Guillaume Hollard (CREST, Polytechnique), Taisuke Imai, Andreas Kotsadam (Oslo) and Shusaku Sasaki. ***Contact and Price of Discrimination,***
- Gwen-Jiro Clochard, Guillaume Hollard. ***GUISSTANN (Gilder la Statistique Publique Sénégalaise: Algorithmes, Téléphonie et Nouvelles Techniques Numériques.***
- Gwen-Jiro Clochard with many coauthors. ***Social norms and honest behavior across countries.***

In-progress projects



- Julia Seither, Megan Lang. ***Constraints to Women's Microenterprise Growth.***
 - Two main ideas motivate this line of research. First, most firms in low-income countries (LICs) have fewer than five workers independent of the specific setting or sector they are operating in. Second, these constraints appear to disproportionately affect women. International Labor Organization data shows that 81.2% of women are self-employed in sub-Saharan Africa, but Ashraf et al (2022) show that women entrepreneurs tend to run businesses that are significantly less profitable than those run by men. Understanding these patterns is central to developing policies for women's economic inclusion. We propose to build on existing work to identify the role that market versus non-market constraints to business growth play in explaining these two phenomena.
- Julia Seither, Simon Hug et al. ***Exposure to Violence, Cooperative Behavior, and Emotions.***
 - The proposed research program explores the role emotions play in civil conflicts and whether targeted interventions might alleviate tensions in processes of conflict resolution. While recent research shows that inclusion and power sharing mitigate conflict, very little is known about how the preconditions for such solutions to societal tensions can be created to help avoid "conflict traps." Adopting a micro-perspective the project aims at elucidating how exposure to violence affects interpersonal interactions, and more specifically bargaining behavior, and how so. Getting a grasp at what mechanisms, especially what emotions, affect more accommodating behavior among individuals but also elites, may offer new avenues for conflict resolution. The overarching

outside JILAE



- research question, namely how exposure to violence and emotions affect interethnic cooperation and bargaining, will be addressed in "lab-in-the-field" experiments in four different sites with citizens who have experienced conflict and among elites participating at training sessions provided by UNITAR (United Nations Institute for Training and Research). Adopting innovative research designs and a novel experimental setup the research program will help identify the causal effect of exposure to violence on individuals (both citizens and elites) and identify the role of emotions as mechanisms in this relationship. As part of the research emotions will be regulated among individuals, the findings from the research program will provide actionable insights to help in the resolution of conflicts.



- Julio Elías, Frederike Ambagtsheer, Eline Bunnik, Liset H.M. Pengel, Marlies Reinders, Nicola Lacetera and Mario Macis. ***Investigating public opinions on financial (dis)incentives for organ donation in Europe.***
 - Many people reject the idea of financially rewarding organ donors. But what if people are informed about the problem (e.g., number of waitlisted patients, waiting times), its implications (e.g., patient mortality, healthcare costs) and the different ways in which rewarding schemes could be ethically implemented? Do their opinions then change? This project, funded by the Dutch Research Council (NWO), cross-nationally surveys European citizens' opinions on removing financial disincentives and allowing incentives for deceased and living organ donation. As the incidence of organ failure continues to grow, the dialogue around removing/allowing (dis)incentives for organ donation is becoming increasingly relevant.

Seminars and conferences given by JILAEE researchers



- **Seminar presentations:** Berlin Behavioral Economics Seminar, UC Davis, Cornell University, London School of Economics, Middlebury College, ODISSEI, University of Chicago, University of Chicago Booth School of Business, Universidad Torcuato Di Tella, University of Zürich
- **Conference presentations:** Bay Area Behavioral and Experimental Economics Work-shop, Early-Career Behavioral Economics Conference, Workshop on Beliefs, Narratives, and Memory



Virtual East Asia Experimental and Behavioral Economics Seminar; International Workshop in Theoretical and Experimental Economics, Osaka; Waseda University, Tokyo; Osaka Workshop on Economics of Institutions and Organizations; ESA AP Meeting, Singapore; Rencontres des Chercheurs Français du Kansai, Kyoto; OSIPP lunch seminar, Osaka; ASFEE, Grenoble; European Economic Association Meeting, Rotterdam; Advances in Field Experiments, London; East Asia Experimental/Behavioral Workshop, Seoul; Japanese Economic Association Fall Meeting, Fukuoka.

conference presentations archers during 2024

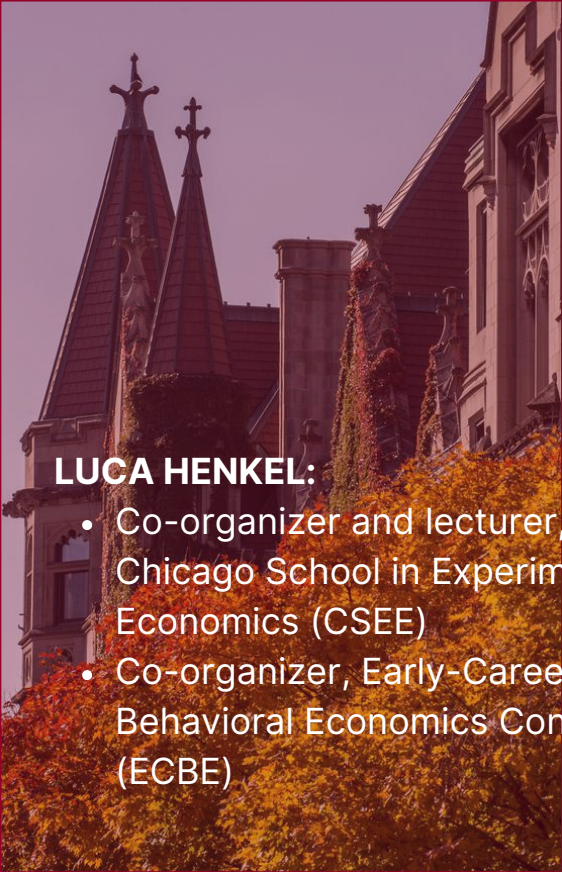


AAEP Annual Meeting (panel), 3rd Workshop on Field Experiments in Economics and Business (TUM Heilbronn), Advances with Field Experiments (AFE), Universidad Torcuato di Tella, NOVAFRICA Conference on Economic Development, ESA World Meeting, Universidad de Los Andes - Chile, LACEA-BRAIN/Ridge Forum.



History of Economics Society Annual Meeting, Universidad del Desarrollo Santiago de Chile. Seminar of Business, Universidad Torcuato Di Tella.
Seminar of Economics, Universidad de San Andres.
2024 Markets & Society Conference, Merkatus Center, George Mason University.
AAEP Annual Meeting, Salta, Argentina.

OTHER PROFES SIONAL ACTIVI TIES

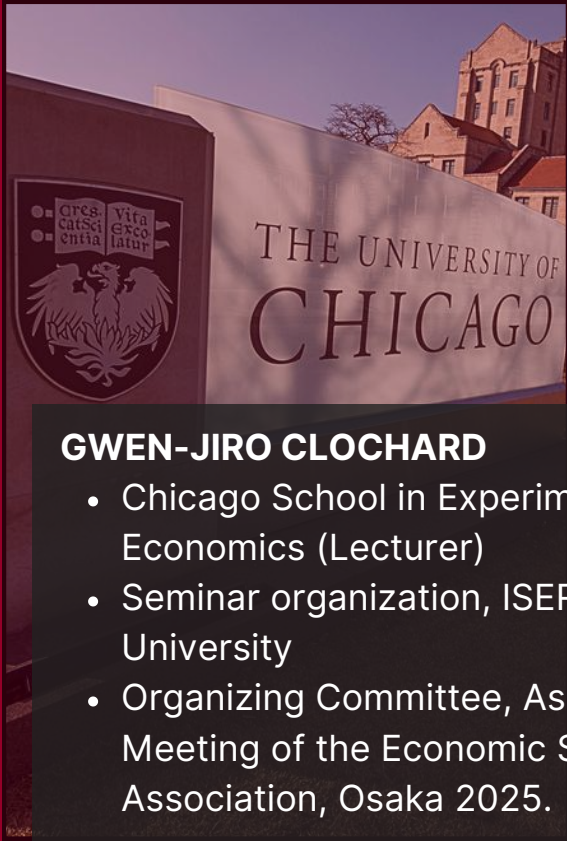


LUCA HENKEL:

- Co-organizer and lecturer, Chicago School in Experimental Economics (CSEE)
- Co-organizer, Early-Career Behavioral Economics Conference (ECBE)

JULIA SEITHER

- Organizer or Program Committee Member at The Chicago School in Experimental Economics; ESA World Meeting 2024; LACEA-BRAIN Workshop at the May Ridge Forum
- LACEA BRAIN - Behavioral Insights Network, Network Director
- REBEL - Rosario Experimental and Behavioral Economics Lab, Executive Director
- J-PAL Jobs & Opportunities Initiative, Invited Researcher
- Weiss Fund for Research in Development Economics, Invited Researcher



GWEN-JIRO CLOCHARD

- Chicago School in Experimental Economics (Lecturer)
- Seminar organization, ISER, Osaka University
- Organizing Committee, Asia-Pacific Meeting of the Economic Science Association, Osaka 2025.

GRANT received by Gwen-Jiro Clochard:

Joint Usage Grant, ISER, 500,000 ¥ (~ 3,5000\$)

Affiliated researchers

That started projects using resources from JILAEE



Andrés Gago started a project with Adam Rangel -a student from Chicago University who visited JILAEE- and Britt Grosskopf -a Exeter University Professor who visited JILAEE.



During his visit, **Diego Marino Fages**, was mainly working on two projects:

- Motivated Forecasts: Evidence from the presidential elections in Argentina
- Inherited effects of the military conscription: he was designing a follow up experiment at the Universidad Nacional del Nordeste. He received help from JILAEE's RAs: Juan Cruz Duhalde, Marco Di Giacomo, Juan Martin Favetto, Clara Pinasco, Bruno Pelaccini

JiLAEE Online & on site seminars.

The JiLAEE Seminar Series hosts speakers from Argentina as well as researchers based at universities abroad. This year we kept having online seminars and we combined them with on site seminars. Usually after an onsite seminar we organize a lunch where the researchers keep the discussion about the subject paper or other matters of interest.

March

Abu Afzal Tauheed
(Jawaharlal Nehru
University)

***"En-Trusting the
"Other" in
Contemporary India:
An Experiment-based
Study"***

June

Anujit Chakraborty (UC
Davis)

***"Risk, Complexity, and
the Demand for
Agricultural
Insurance"***

August

Diego Mariño Fages (Durham University)

***"Motivated Forecasts: Evidence from the Presidential
Elections in Argentina"***

Santiago Hermo (Brown University)

***"Firms and the Evolution of Earnings Inequality in
Argentina's Volatile Economy"***

Find Us Online!



www.jilaee.org

[X](#)

[YouTube](#)

[Linkedin](#)