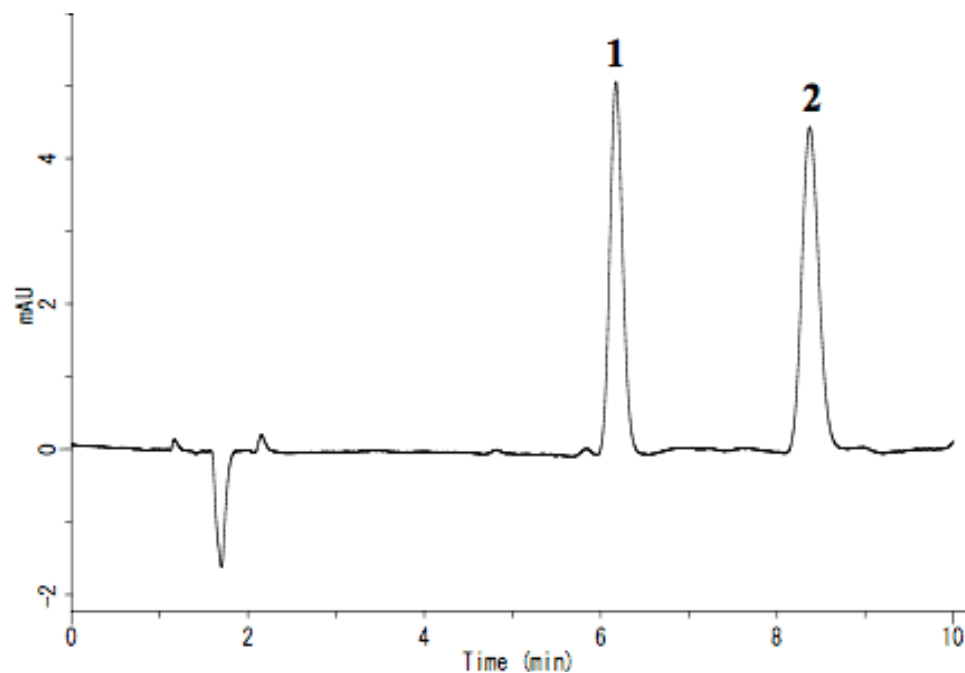


# InertSearch™ for LC

Inertsil® Applications

## Analysis of L-Carnitine

Data No. LA513-0696



System : GL-7400 system  
Column : Inertsil ODS-3 (5  $\mu$ m, 150 x 4.6 mm I.D.)  
Column Cat. No. :  
Eluent : A) CH<sub>3</sub>OH  
          B) 20 mM NaH<sub>2</sub>PO<sub>4</sub>, 5 mM IPCC-09 (pH 2.5; H<sub>3</sub>PO<sub>4</sub>)  
          (IPCC-09: Sodium 1-Nonanesulfonate)  
          A/B = 30/70 , v/v  
Flow rate : 1.0 mL/min  
Col. Temp. : 40 °C  
Detection : UV 210 nm (GL-7450 UV Detector)  
Injection Vol. : 10  $\mu$ L  
Sample :

Solutes : 1. L-Carnitine (300 mg/L)  
          2. Acetyl-L-carnitine chloride (300 mg/L)