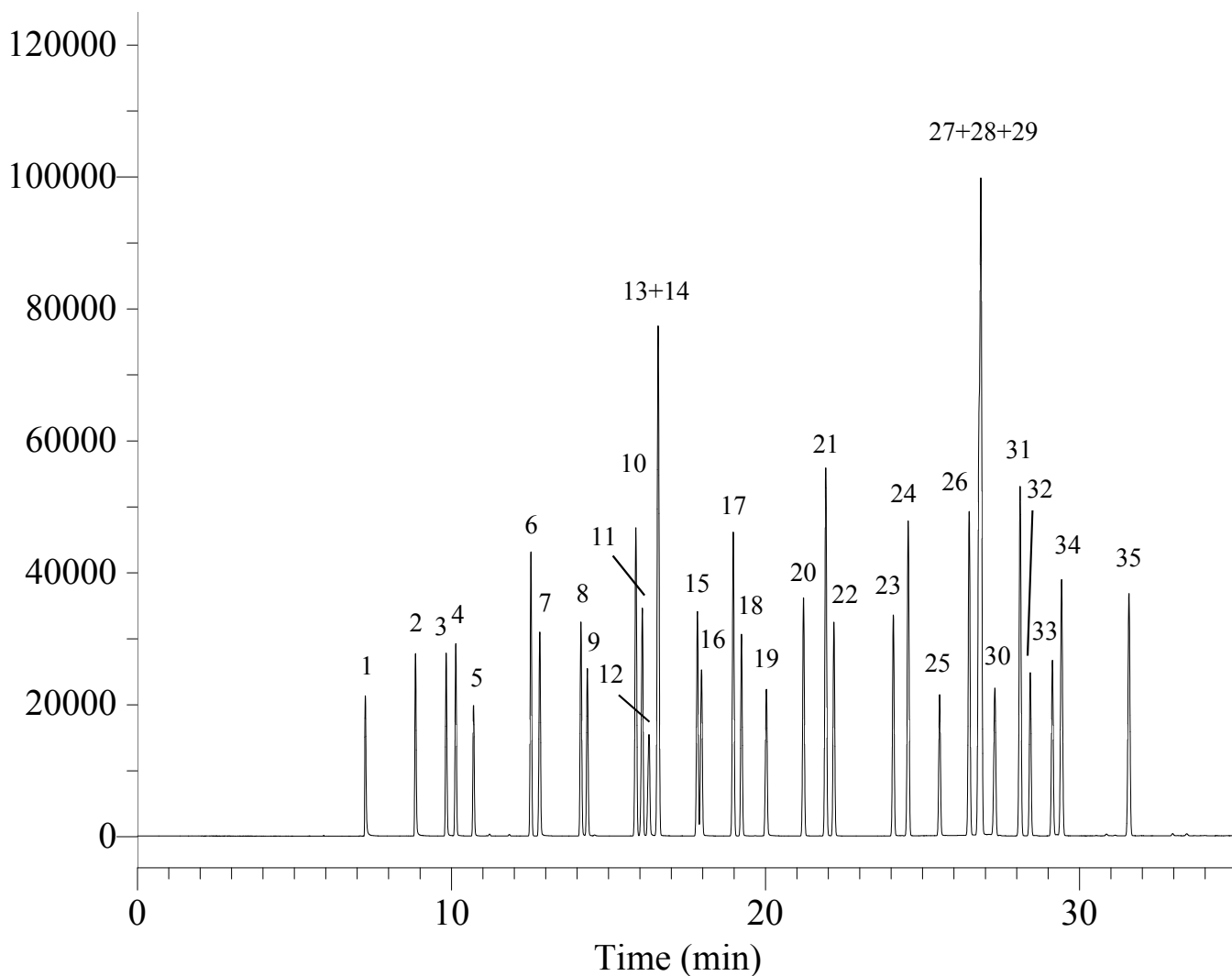


# InertSearch™ for GC

InertCap® Applications

## Organic Solvents

Data No. GA138-0644



### Conditions

**System** : GC/FID  
**Column** : InertCap 1301  
0.25 mm I.D. x 60 m df = 1.0 µm  
**Col. Cat. No.** : 1010-60165  
**Col. Temp.** : 40 °C (5 min hold) - 5 °C/min - 200 °C  
**Carrier Gas** : He 160 kPa  
**Injection** : Split flow 100 mL/min  
200 °C  
**Detection** : FID Range 10<sup>1</sup>  
200 °C  
**Sample Size** : Mixed evenly  
0.2 µL

# InertSearch™ for GC

InertCap® Applications

## Organic Solvents

Data No. GA138-0644

### Analyte :

- |   |   |
|---|---|
| 1. Methanol   | 19. 2-Ethoxyethanol(Cellosolve)   |
| 2. Ethanol  | 20. 4-Methyl-2-pentanone(MIBK)  |
| 3. Acetone  | 21. Toluene   |
| 4. 2-Propanol(Isopropyl alcohol)                                | 22. Isobutyl acetate  |
| 5. Methyl acetate   | 23. n-Butyl acetate   |
| 6. n-Hexane   | 24. Ethylcyclohexane  |
| 7. 1-Propanol   | 25. 2-Methoxyethyl acetate<br>(Methyl cellosolve acetate)                     |
| 8. 2-Butanone(MEK)  | 26. Ethylbenzene  |
| 9. Ethyl acetate  | 27. 1-Methoxy-2-propyl acetate<br>(Propylene glycol monomethyl ether acetate) |
| 10. Cyclohexane   | 28. m-Xylene  |
| 11. 2-Methyl-1-propanol(Isobutyl alcohol)                       | 29. p-Xylene  |
| 12. 2-Methoxyethanol(Methyl cellosolve)                         | 30. Diacetone alcohol   |
| 13. Benzene   | 31. o-Xylene  |
| 14. Isopropyl acetate   | 32. 2-Ethoxyethyl acetate(Cellosolve acetate)                                 |
| 15. 1-Butanol   | 33. 2-Butoxyethanol(Butyl cellosolve)   |
| 16. 1-Methoxy-2-propanol<br>(Propylene glycol monomethyl ether) | 34. Cyclohexanone   |
| 17. Methylcyclohexane   | 35. 2-Methylcyclohexanone   |
| 18. n-Propyl acetate  |   |