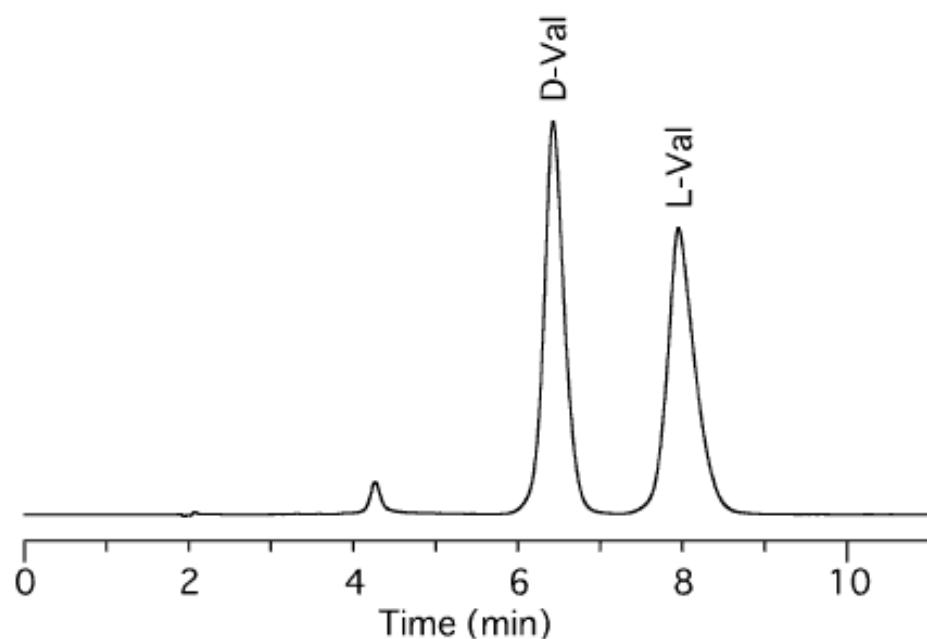


## Analysis of OPA-Valine (Val)

Data No. LA376-0000

OPA-Val



Column : Bioptic AV-1  
5 $\mu$ m  
150  $\times$  4.6 mm I.D.

Solutes : 1. OPA-D-Val  
2. OPA-L-Val

Column Cat. No. : 5020-02511

Eluent : Methanol / 50mM phosphate buffer (pH6.6) = 8 / 92 (w / w)

Flow rate : 1.0 mL/min.

Col. Temp. : 40°C

Detection : UV 340nm

Injection Vol. : 5 $\mu$ L

Sample : 10 $\mu$ L Amino acid sol.(10mg/mL 50%MeOH)+ 40 $\mu$ L  
OPA sol.  
L 2-mercaptoethanol in 10mL borate buffer  
pH9.2)mixing