



# **BULL SALES** — TOOLS & EQUIPMENT —

**YOUR FACTORY DIRECT LINK**

**2026 PRODUCT CATALOG**

 **BSI** DISTRIBUTOR  
SOURCE

**25** YEARS  
OF SERVICE

 **DURABULL**



**SERVING  
CONSTRUCTION  
INDUSTRIAL  
AUTOMOTIVE  
& HARDWARE  
MARKETS**

**Bull Sales Inc.** is a Canadian based Sales and Marketing company founded over 25 years ago. Our company has hundreds of years of combined experience in managing the Canadian Professional Distribution market.

We pride ourselves in becoming the Canadian partners of our Principal Factories and work very closely with them to define the best programs for the Canadian Distributor market.

We are headquartered in Southern Ontario and serve Canada with a national team of 14 Outside Sales Representatives and 2 Inside Account Managers.

**BSI Distributor Source Inc.** (BSIDS) Opened in 2016 to serve a specific need in the Canadian Industrial, Contractor's Supply, Hardware, Retail and Automotive markets for Canadian warehousing and distribution. We are proud to serve and support our Distribution Networks. We do not sell directly to end user customers.

All products sold in Canadian Dollars with attractive low prepaid freight programs. Distributors can mix and match items from this catalogue to meet freight prepaid policy.

Our warehouse is conveniently located in Thorold, ON close to 406 Highway (easy access to QEW- 1 hour drive from GTA).

**PROGRAM HIGHLIGHTS**

- ▶ CANADIAN DOLLAR BILLING
- ▶ PRODUCTS STOCKED IN OUR CANADIAN WAREHOUSE
- ▶ PAYMENT TERMS - NET 30 OAC
- ▶ MIX / MATCH ITEMS TO MEET PPD \$800 FREIGHT
- ▶ NO MINIMUM ORDER
- ▶ FOB THOROLD ON
- ▶ MOST ORDERS SHIP SAME OR NEXT DAY

All information in this catalog is presented solely as a guide to product selection and is believed to be reliable. All printing or pricing errors are subject to correction in subsequent releases of this catalog. Pricing subject to change without notice.



<b><u>CHANNELLOCK®</u></b> - <i>PLIERS &amp; HAND TOOLS</i> .....	<b>4</b>
<b><u>DEWALT®</u></b> - <i>LICENSED PRODUCTS</i> .....	<b>13</b>
<b><u>STANLEY®</u></b> - <i>LICENSED PRODUCTS</i> .....	<b>23</b>
<b><u>STEALTH®</u></b> - <i>WET/DRY VACUUM UNIVERSAL FIT ACCESSORIES</i> .....	<b>26</b>
<b><u>STANLEY®</u></b> - <i>TV WALL MOUNTS</i> .....	<b>29</b>
<b><u>CHICAGO PNEUMATIC®</u></b> - <i>AIR TOOLS &amp; ACCESSORIES</i> .....	<b>31</b>
<b><u>FEIN®</u></b> - <i>POWER TOOLS &amp; ACCESSORIES</i> .....	<b>39</b>
<b><u>KOMELON®</u></b> - <i>MEASURING TAPES, MEASURING WHEELS &amp; KNIVES</i> .....	<b>45</b>
<b><u>ZIRCON®</u></b> - <i>STUD FINDERS &amp; ELECTRONIC DETECTION EQUIPMENT</i> .....	<b>49</b>
<b><u>MECH TOOLS®</u></b> - <i>SOFT-SIDED LEATHER TOOL STORAGE</i> .....	<b>52</b>
<b><u>EKLIND®</u></b> - <i>HEX KEYS</i> .....	<b>57</b>
<b><u>ABC HAMMERS®</u></b> - <i>UNBREAKABLE SLEDGE, DEADBLOW, BRASS &amp; BRONZE NON-SPARKING</i> .....	<b>60</b>
<b><u>DURABULL®</u></b> - <i>COMMERCIAL FANS &amp; AIR MOVERS</i> .....	<b>62</b>
<b><u>HYDRAULIC TECHNOLOGIES®</u></b> - <i>POWER TEAM® HIGH FORCE HYDRAULIC TOOLS</i> .....	<b>63</b>

## Tongue & Groove Plier Straight Jaw



PART #	DESCRIPTION	DIST. NET	MSRP
CHA426	6.5" STRAIGHT JAW	\$19.43	\$27.99
CHA420	9.5" STRAIGHT JAW	\$23.44	\$33.99
CHA430	10" STRAIGHT JAW	\$24.38	\$34.99
CHA440	12" STRAIGHT JAW	\$27.66	\$39.99
CHA460	16" STRAIGHT JAW	\$47.68	\$67.99
CHA480	20" BIG AZZ® STRAIGHT JAW	\$89.93	\$127.99

## Tongue & Groove Plier V-Jaw



PART #	DESCRIPTION	DIST. NET	MSRP
CHA412	6" V-JAW	\$19.70	\$27.99
CHA422	9.5" V-JAW	\$23.77	\$33.99
CHA432	10" V-JAW	\$25.62	\$36.99
CHA442	12" V-JAW	\$27.44	\$39.99

## Tongue & Groove Plier Straight Jaw



PART #	DESCRIPTION	DIST. NET	MSRP
CHA415	10" SMOOTH JAW	\$24.38	\$34.99

## Tongue & Groove Plier GripLock®



PART #	DESCRIPTION	DIST. NET	MSRP
CHAGL6	6" GRIPLOCK®	\$19.08	\$26.99
CHAGL10	10" GRIPLOCK®	\$20.94	\$28.99
CHAGL12	12" GRIPLOCK®	\$28.13	\$39.99

## Tongue & Groove Plier Straight Jaw



PART #	DESCRIPTION	DIST. NET	MSRP
CHA428	8" SAFE-T-STOP®	\$24.35	\$34.99

## Tongue & Groove Plier



PART #	DESCRIPTION	DIST. NET	MSRP
CHA410	10" NUTBUSTER® PARROT NOSE	\$29.34	\$41.99
CHA414	14" NUTBUSTER® PARROT NOSE	\$47.33	\$66.99

## Tongue & Groove Plier Straight Jaw



PART #	DESCRIPTION	DIST. NET	MSRP
CHA428X	8" SPEEDGRIP®	\$43.77	\$60.99
CHA430X	10" SPEEDGRIP®	\$47.36	\$67.99
CHA440X	12" SPEEDGRIP®	\$53.82	\$76.99

## Tongue & Groove Plier V-Jaw



PART #	DESCRIPTION	DIST. NET	MSRP
CHA432X	10" SPEEDGRIP®	\$47.95	\$68.99
CHA442X	12" SPEEDGRIP®	\$54.40	\$78.99

## Slip Joint Plier Shear



PART #	DESCRIPTION	DIST. NET	MSRP
CHA524	4"	\$18.11	\$25.99
CHA526	6"	\$18.06	\$25.99
CHA528	8"	\$18.60	\$26.99

### Cutting Plier-High Leverage



PART #	DESCRIPTION	DIST. NET	MSRP
CHA336	DIAGONAL E SERIES, LAP XLT™ - 6"	\$34.21	\$47.99
CHA337	DIAGONAL E SERIES, LAP XLT™ - 7"	\$31.55	\$44.99
CHA338	DIAGONAL E SERIES, LAP XLT™ - 8"	\$32.99	\$45.99

### Cutting Plier-High Leverage



PART #	DESCRIPTION	DIST. NET	MSRP
CHA447	DIAGONAL E SERIES CURVED LAP JOINT 8"	\$42.85	\$60.99
CHA449	DIAGONAL E SERIES, CURVED LAP JOINT 9"	\$45.07	\$64.99

### Cutting Plier High Leverage Centre Cut



PART #	DESCRIPTION	DIST. NET	MSRP
CHA458	8" E SERIES, LAP XLT™	\$43.68	\$60.99

### Cutting Plier-End Cut



PART #	DESCRIPTION	DIST. NET	MSRP
CHA356	6"	\$38.18	\$54.99
CHA357	7"	\$35.54	\$50.99
CHA358	8"	\$43.54	\$60.99

### Cutting Plier-Nipper



PART #	DESCRIPTION	DIST. NET	MSRP
CHA14810	10"	\$47.80	\$67.99

### Cutting Plier-Concrete Nipper



PART #	DESCRIPTION	DIST. NET	MSRP
CHA35250	10"	\$39.28	\$55.99

### Cutting Plier-Combination XLT™



PART #	DESCRIPTION	DIST. NET	MSRP
CHA348	8"	\$47.70	\$67.99

### Cutting Linemans Round Nose XLT™



PART #	DESCRIPTION	DIST. NET	MSRP
CHA368	8"	\$46.98	\$66.99
CHA369	9"	\$42.50	\$59.99
CHA369CR	9" CRIMPER	\$53.40	\$76.99

### Long Nose Plier XLT™



PART #	DESCRIPTION	DIST. NET	MSRP
CHA326	6" SIDE CUTTER	\$36.29	\$50.99
CHA317	8" SIDE CUTTER	\$34.91	\$48.99
CHA3017	8"	\$31.76	\$44.99
CHAE318	8" E SERIES	\$38.44	\$54.99
CHAE388	8" BENT LONG NOSE-SIDE CUTTER	\$39.48	\$55.99

### Long Nose Plier-Long Reach



PART #	DESCRIPTION	DIST. NET	MSRP
CHA718	8" FLAT NOSE	\$32.41	\$45.99

### Long Nose Plier-Long Reach



PART #	DESCRIPTION	DIST. NET	MSRP
CHA738	8" NEEDLE NOSE	\$33.68	\$47.99

### Long Nose Plier-Long Reach



PART #	DESCRIPTION	DIST. NET	MSRP
CHA748	8" END-CUT PLIER	\$42.64	\$60.99

### Long Nose Plier-Long Reach



PART #	DESCRIPTION	DIST. NET	MSRP
CHA758	8" DIAGONAL FLUSH CUTTING	\$48.36	\$69.99

### Little Champs



PART #	DESCRIPTION	DIST. NET	MSRP
CHA424	4" TONGUE & GROOVE STRAIGHT JAW	\$22.47	\$32.99

### Oil Filter/PVC Plier



PART #	DESCRIPTION	DIST. NET	MSRP
CHA209	9"	\$26.99	\$38.99
CHA212	12"	\$35.02	\$49.99
CHA2012	12" ANGLED HEAD	\$36.75	\$51.99
CHA215	15.5"	\$42.01	\$58.99

### Iron Worker Plier



PART #	DESCRIPTION	DIST. NET	MSRP
CHA350S	9" BEVEL NOSE, SPRING	\$50.84	\$71.99

### Welding Plier



PART #	DESCRIPTION	DIST. NET	MSRP
CHA360	9"	\$46.25	\$66.99

### Fence Plier



PART #	DESCRIPTION	DIST. NET	MSRP
CHA85	10"	\$52.26	\$75.99

### Rescue Tool-Combination



PART #	DESCRIPTION	DIST. NET	MSRP
CHA86	9"	\$88.53	\$126.99

### Rescue Tool-Cable Cutter



PART #	DESCRIPTION	DIST. NET	MSRP
CHA87	9"	\$72.03	\$102.99

### Cable Cutter Shear, Compound



PART #	DESCRIPTION	DIST. NET	MSRP
CHA910	9"	\$80.73	\$113.99

### Cable Cutter



PART #	DESCRIPTION	DIST. NET	MSRP
CHA911	9"	\$46.08	\$65.99

### Retaining Ring Plier



PART #	DESCRIPTION	DIST. NET	MSRP
CHA926	6"	\$38.89	\$55.99
CHA927	8"	\$41.61	\$58.99
CHA929	10"	\$78.33	\$111.99

### Retaining Ring Plier Set



PART #	DESCRIPTION	DIST. NET	MSRP
CHART3	3PC SET	\$161.54	\$231.99

### Retaining Ring Plier Tip Kit



PART #	DESCRIPTION	DIST. NET	MSRP
CHA926T	5PC UNIVERSAL TIP KIT FOR 926	\$11.18	\$15.99
CHA927T	5PC UNIVERSAL TIP KIT FOR 927	\$11.18	\$15.99
CHA929T	5PC UNIVERSAL TIP KIT FOR 929	\$15.40	\$22.99

### Locking Plier-Straight Jaw



PART #	DESCRIPTION	DIST. NET	MSRP
CHA1017	7"	\$31.19	\$43.99
CHA10110	10"	\$35.96	\$49.99

### Locking Plier-Curved Jaw



PART #	DESCRIPTION	DIST. NET	MSRP
CHA1025	5"	\$24.83	\$34.99
CHA1027	7"	\$30.11	\$42.99
CHA10210	10"	\$35.87	\$50.99

### Locking Plier-C-Clamp



PART #	DESCRIPTION	DIST. NET	MSRP
CHA1066	6"	\$30.65	\$43.99
CHA10612	12"	\$52.72	\$75.99

### Locking Plier-C-Clamp w/Swivel Pads



PART #	DESCRIPTION	DIST. NET	MSRP
CHA1076	6"	\$33.88	\$47.99
CHA10712	12"	\$53.95	\$76.99

### Locking Plier-Long Nose



PART #	DESCRIPTION	DIST. NET	MSRP
CHA1036	6"	\$26.53	\$37.99
CHA10310	10"	\$33.44	\$46.99

### Locking Plier-Large Jaw



PART #	DESCRIPTION	DIST. NET	MSRP
CHA10410	10"	\$72.45	\$104.99

### 1000v Rated Plier



PART #	DESCRIPTION	DIST. NET	MSRP
CHA3181	8" LONG NOSE	\$91.73	\$129.99

### 1000v Rated Plier



PART #	DESCRIPTION	DIST. NET	MSRP
CHA3481	8" COMBINATION	\$96.21	\$137.99

### Plier Set



PART #	DESCRIPTION	DIST. NET	MSRP
CHAGS3	3PC SET-INCLUDES 426/420/440	\$70.50	\$99.99

### Plier Set



PART #	DESCRIPTION	DIST. NET	MSRP
CHAGLS1	2PC SET-INCLUDES GL6/GL12	\$49.06	\$70.99

### Locking Plier-Sheet Metal



PART #	DESCRIPTION	DIST. NET	MSRP
CHA1088	8"	\$51.61	\$72.99

### 1000v Rated Plier



PART #	DESCRIPTION	DIST. NET	MSRP
CHA3371	7" DIAGONAL CUTTING, LAP JOINT	\$83.42	\$119.99

### Plier Set



PART #	DESCRIPTION	DIST. NET	MSRP
CHAGS1	2PC SET-INCLUDES 426/ 420	\$42.85	\$59.99

### Plier Set



PART #	DESCRIPTION	DIST. NET	MSRP
CHAGS1X	3PC SET-SPEEDGRIP® NCL 428X / 430X	\$91.12	\$128.99

### Plier Set



PART #	DESCRIPTION	DIST. NET	MSRP
CHAGLS3	3PC SET-INCLUDES GL6/ GL10/ GL12	\$68.13	\$96.99

### Crimping / Cutter Plier



PART #	DESCRIPTION	DIST. NET	MSRP
CHA909	9"	\$39.95	\$56.99

### Wire Stripper



PART #	DESCRIPTION	DIST. NET	MSRP
CHA908	8" 10-22 AWG CRIMP,CUT	\$28.25	\$40.99

### Wire Stripper



PART #	DESCRIPTION	DIST. NET	MSRP
CHA968	8" FORGED	\$67.36	\$95.99

### Wire Stripper



PART #	DESCRIPTION	DIST. NET	MSRP
CHA957	7" ERGO HANDLE	\$27.58	\$39.99

### Wire Stripper



PART #	DESCRIPTION	DIST. NET	MSRP
CHA958	6" 10-20 AWG	\$20.92	\$29.99

### Wire Stripper



PART #	DESCRIPTION	DIST. NET	MSRP
CHA959	8" 8-22 AWG CRIMP	\$35.48	\$49.99

### Ultra Access Uni-fit -Tool Set Pass Thru



PART #	DESCRIPTION	DIST. NET	MSRP
CHA39100	16PC	\$69.14	\$98.99

### Mechanics Tool Set



PART #	DESCRIPTION	DIST. NET	MSRP
CHA39070	94PC	\$92.24	\$130.99

### Mechanics Tool Set



PART #	DESCRIPTION	DIST. NET	MSRP
CHA39067	132PC	\$160.97	\$229.99

### Mechanics Tool Set



PART #	DESCRIPTION	DIST. NET	MSRP
CHA39053	171PC	\$268.96	\$383.99

### Mechanics Tool Set-1/4" Drive



PART #	DESCRIPTION	DIST. NET	MSRP
CHA34211	21PC 1/4" SAE	\$55.04	\$78.99
CHA34212	21PC 1/4" METRIC	\$55.04	\$78.99

### Mechanics Tool Set-1/2" Drive



PART #	DESCRIPTION	DIST. NET	MSRP
CHA32161	16PC 1/2" SAE	\$101.63	\$143.99
CHA32162	16PC 1/2" METRIC	\$101.63	\$143.99

### Pry Bar Set



PART #	DESCRIPTION	DIST. NET	MSRP
CHAPRY3C	3PC: 12", 17", 25"	\$64.49	\$91.99

### Phillips® Demolition Driver



PART #	DESCRIPTION	DIST. NET	MSRP
CHADP206H	#2 X 6"	\$17.40	\$24.99

### Demolition Driver Set S&P



PART #	DESCRIPTION	DIST. NET	MSRP
CHADS2H	2PC	\$35.62	\$50.99

### Mechanics Tool Set-3/8" Drive



PART #	DESCRIPTION	DIST. NET	MSRP
CHA38181	18PC 3/8" SAE	\$67.73	\$96.99
CHA38182	18PC 3/8" METRIC	\$67.73	\$96.99

### Pry Bar



PART #	DESCRIPTION	DIST. NET	MSRP
CHAPR8C	8"- 1/2" X 4"	\$17.38	\$24.99
CHAPR12C	12"- 3/8" X 7"	\$21.40	\$29.99
CHAPR17C	17"- 5/8" X 12"	\$23.21	\$32.99
CHAPR25C	25"- 1/2" X 18"	\$29.65	\$41.99
CHAPR31C	31"- 1/2" X 24"	\$34.78	\$48.99
CHAPR36C	36"- 5/8" X 28"	\$46.73	\$66.99
CHAPR45C	45"- 5/8" X 38"	\$69.00	\$98.99

### Mechanics Ratcheting Wrench Set



PART #	DESCRIPTION	DIST. NET	MSRP
CHA841M	2PC METRIC	\$52.84	\$75.99
CHA841S	2PC SAE	\$52.84	\$75.99

### Slotted Demolition Driver



PART #	DESCRIPTION	DIST. NET	MSRP
CHADS146H	1/4" X 6"	\$18.22	\$25.99

### Precision Torx® Driver Set



PART #	DESCRIPTION	DIST. NET	MSRP
CHATP5H	5PC	\$41.99	\$58.99

### Precision Hook & Pick Set



PART #	DESCRIPTION	DIST. NET	MSRP
CHAHP4H	4PC	\$23.85	\$33.99

### Ratcheting Multi-Bit Screwdriver



PART #	DESCRIPTION	DIST. NET	MSRP
CHA131CB	13-IN-1	\$51.30	\$72.99

### Adjustable Wrench Code Blue®



PART #	DESCRIPTION	DIST. NET	MSRP
CHA806WCB	6"	\$31.09	\$43.99
CHA808WCB	8"	\$36.24	\$50.99
CHA810WCB	10"	\$44.11	\$61.99
CHA812WCB	12"	\$61.45	\$86.99

### Adjustable Wrench Extra Slim Jaw



PART #	DESCRIPTION	DIST. NET	MSRP
CHA806SW	6"	\$31.43	\$43.99

### Adjustable Wrench Slim Jaw



PART #	DESCRIPTION	DIST. NET	MSRP
CHA6SWCB	WIDEAZZ® CODE BLUE® - 6"	\$47.64	\$67.99
CHA8SWCB	WIDEAZZ® CODE BLUE® - 8"	\$50.68	\$71.99

### Professional Multi-Bit Screwdriver



PART #	DESCRIPTION	DIST. NET	MSRP
CHA61H	6-IN-1	\$21.90	\$30.99

### Adjustable Wrench



PART #	DESCRIPTION	DIST. NET	MSRP
CHA6WCB	WIDEAZZ® CODE BLUE® 6"	\$41.80	\$58.99
CHA8WCB	WIDEAZZ® CODE BLUE® 8"	\$44.95	\$64.99
CHA10WCB	WIDEAZZ® CODE BLUE® 10"	\$58.62	\$83.99

### Adjustable Wrench-Chrome



PART #	DESCRIPTION	DIST. NET	MSRP
CHA804S	4"	\$27.96	\$39.99
CHA806W	6"	\$26.25	\$37.99
CHA808W	8"	\$28.97	\$40.99
CHA810W	10"	\$35.25	\$49.99
CHA812W	12"	\$50.59	\$71.99
CHA815	15"	\$83.30	\$119.99
CHA818	18"	\$159.35	\$226.99
CHA824	24"	\$308.73	\$441.99
CHA830	30"	\$615.67	\$878.99

### Adjustable Wrench-Chrome



PART #	DESCRIPTION	DIST. NET	MSRP
CHA806PW	REVERSIBLE (PIPE) JAW - 6"	\$32.39	\$45.99
CHA808PW	REVERSIBLE (PIPE) JAW - 8"	\$37.12	\$51.99
CHA810PW	REVERSIBLE (PIPE) JAW - 10"	\$50.78	\$71.99
CHA812PW	REVERSIBLE (PIPE) JAW - 12"	\$69.63	\$99.99

## Aviation Snip-Offset



PART #	DESCRIPTION	DIST. NET	MSRP
CHA610FL	10" LEFT CUT	\$32.85	\$46.99
CHA610FR	10" RIGHT CUT	\$32.85	\$46.99

## Aviation Snip-Upright



PART #	DESCRIPTION	DIST. NET	MSRP
CHA610UL	10" LEFT CUT	\$34.42	\$48.99
CHA610UR	10" RIGHT CUT	\$33.79	\$47.99

## Aviation Snip



PART #	DESCRIPTION	DIST. NET	MSRP
CHA612TD	12" DUCKBILL	\$33.67	\$46.99

## Aviation Snip - Tinner



PART #	DESCRIPTION	DIST. NET	MSRP
CHA608TS	8"	\$22.82	\$32.99
CHA610TS	10"	\$30.36	\$42.99
CHA612TS	12"	\$34.20	\$47.99

## Aviation Snip



PART #	DESCRIPTION	DIST. NET	MSRP
CHA610AS	10" STRAIGHT CUT	\$29.25	\$41.99
CHA610AL	10" LEFT CUT	\$27.42	\$39.99
CHA610AR	10" RIGHT CUT	\$28.98	\$41.99

## Aviation Snip



PART #	DESCRIPTION	DIST. NET	MSRP
CHA610BS	10" BULLDOG	\$28.62	\$40.99

## Aviation Snip - Utility



PART #	DESCRIPTION	DIST. NET	MSRP
CHA610SS	10"	\$25.10	\$35.99

## DeWALT 8G Stainless Steel Vacuum



PART #	DESCRIPTION	DIST. COST	MSRP
DXV08S	8 GAL 5.0HP STAINLESS STEEL	\$109.13	\$139.99

## DeWALT 10G Poly Vacuum



PART #	DESCRIPTION	DIST. COST	MSRP
DXV10PL	10 GAL 5.0HP POLY	\$146.55	\$189.99

## DeWALT 6G Wall Vacuum



PART #	DESCRIPTION	DIST. COST	MSRP
DXV06G	6 GAL WALL VACUUM, WIRELESS ON / OFF CONTROL	\$174.76	\$239.99

## DeWALT 12G Blower Vac

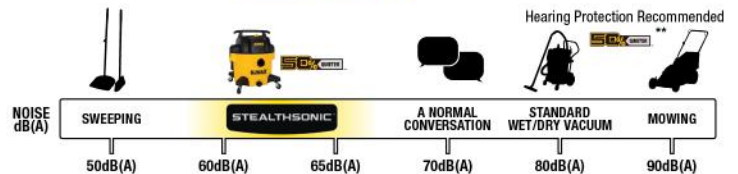


PART #	DESCRIPTION	DIST. COST	MSRP
DXV212P	12 GAL VACUUM WITH DETACHABLE BLOWER	\$180.50	\$249.99

## DeWALT Stealthsonic® Vacuums



**50% QUIETER™**



PART #	DESCRIPTION	DIST. COST	MSRP
DXV05P QTA	5 GAL 4.0HP 50% QUIETER-POLY	\$116.61	\$159.99
DXV09P QTA	9 GAL 5.0HP 50% QUIETER-POLY	\$158.19	\$189.99
DXV12P QTA	12 GAL 5.5HP 50% QUIETER-POLY	\$176.01	\$219.99
DXV16P QTA	16 GAL 6.5HP 50% QUIETER-POLY & CART	\$256.91	\$329.99

## DeWALT Dust Separator



PART #	DESCRIPTION	DIST. COST	MSRP
DXVC S002	DEWALT 6 GALLON CYCLONIC DUST SEPARATOR	\$74.50	\$99.99

## DeWALT AC / DC Wet/ Dry Vacuum



PART #	DESCRIPTION	DIST. COST	MSRP
DXCVXA 092B	9 GAL, RUNS ON 20V MAX OR PLUGGED IN, CART	\$304.48	\$399.00
DXCVXA 122B	12 GAL, RUNS ON 20V MAX OR PLUGGED IN, CART	\$314.50	\$419.00

## DeWALT High Efficiency Filter Bags



\*Packs of 3

PART #	DESCRIPTION	DIST. COST	MSRP
DXVA 194111	FINE DUST/ DRYWALL 6-10 GAL	\$18.03	\$21.99
DXVA 194112	FINE DUST/ DRYWALL 12-16 GAL	\$19.62	\$34.99

## DeWALT Filter Cartridge



REGULAR



FINE DUST / DRYWALL



HEPA

PART #	DESCRIPTION	DIST. COST	MSRP
DXVC 4001	REGULAR 4-5,8 GAL	\$12.84	\$22.99
DXVC 4002	FINE DUST/ DRYWALL 4 - 5, 8 GAL	\$19.02	\$33.99
DXVC 4003	HEPA 4-5,8 GAL	\$23.00	\$39.99
DXVC 6910	REGULAR 6-16 (EXC. 8) GAL	\$17.15	\$29.99
DXVC 6912	FINE DUST/ DRYWALL 6-16 (EXC. 8) GAL	\$25.86	\$44.99
DXVC 6914	HEPA 6-16 (EXC. 8) GAL	\$38.10	\$64.99

## DeWALT 1G DC BACKPACK VACUUM



PART #	DESCRIPTION	DIST. COST	MSRP
DXCVXA 01B	20V MAX, HEPA FILTER, DUST TANK SWITCH	\$255.68	\$349.00

## DeWALT Wet / Dry Vacuum Pump



PART #	DESCRIPTION	DIST. COST	MSRP
DXV PA101	MULTIPLE ADAPTORS, 19 FT. CORD WITH GFCI	\$67.10	\$89.99

## DeWALT Filter Bags



\*Packs of 3

PART #	DESCRIPTION	DIST. COST	MSRP
DXVA 254040	4 GAL (3 BAGS)	\$9.16	\$16.99
DXVA 194104	5-8 GAL (3 BAGS)	\$11.76	\$20.99
DXVA 194101	6-10 GAL (3 BAGS)	\$12.28	\$21.99
DXVA 194102	12-16 GAL (3 BAGS)	\$13.36	\$24.99

## DeWalt Premium Vacuum Accessories



PART #	DESCRIPTION	DIST. COST	MSRP
1 DXVA 001200	PIVOTING EXTENSION WAND 1-1/4" TO 2-1/2", WET / DRY VAC.	\$33.47	\$59.99
2 DXVA 001500	DUST COLLECTOR 1/4" TO 2-1/2", WET / DRY VAC.	\$28.25	\$49.99
3 DXVA 000301	CONDUIT LINE PULLER KIT 1-1/4" TO 2-1/2", WET / DRY VAC.	\$45.40	\$89.99
4 DXVA 004300	CLAW UTILITY NOZZLE BRUSH 1-1/4" TO 2-1/2", WET / DRY VAC	\$23.55	\$39.99
5 DXVA 001501	MAGNETIC UTILITY NOZZLE 1-1/4" TO 2-1/2", WET / DRY VAC.	\$25.02	\$44.99

## DeWALT Vacuum Hose



PART #	DESCRIPTION	DIST. COST	MSRP
DXVA 192500	ULTRA DURABLE- 1-7 / 8"-7'	\$22.34	\$39.99
DXVA 192501	ULTRA DURABLE- 2-1 / 2"-7'	\$24.78	\$44.99

## DeWALT Powered Sweeper



**20V**<sup>MAX</sup>

PART #	DESCRIPTION	DIST. COST	MSRP
DXSBXA 2017 002	DEWALT 20V CORDLESS POWERED SWEEPER, TOOL ONLY	\$240.00	\$349.00

## DeWALT Air Mover

DXAM 2260



DXAM 2818



PART #	DESCRIPTION	DIST. COST	MSRP
DXAM 2260	600CFM AIR MOVER, 1/5HP, 3 SPEED, 10' CORD	\$103.21	\$129.99
DXAM 2818	1800CFM AIR MOVER, 3/4HP, 3 SPEED, 30' CORD, CART	\$300.85	\$389.99

## DeWALT 16" Air Cleaner Fan



### AVAILABLE AIR FILTERS



**DXFA4101**  
UNIVERSAL



**DXFA4102**  
HIGH-EFFICIENCY



**DXFA4103**  
HEPA

PART #	DESCRIPTION	DIST. COST	MSRP
DXF 1612	PURIFY AIR OR USE AS FAN, DIGITAL DISPLAY, MOUNTING HOOKS, 55 DBA	\$185.47	\$249.99

## DeWALT Air Filtration



PART #	DESCRIPTION	DIST. COST	MSRP
DWXA F101	3 SPEED, 2 STAGE FILTRATION	\$295.96	\$429.00
DXVC 3902	HIGH EFFICIENCY FILTER	\$28.16	\$39.99
DXVC 3903	H11 HEPA FILTER	\$38.39	\$54.99

## DeWALT Snow Shovel



**20V**<sup>MAX</sup>

PART #	DESCRIPTION	DIST. COST	MSRP
DXSVXA 2016 002	DEWALT 20V CORDLESS SNOW SHOVEL, TOOL ONLY	\$165.00	\$229.00

## DeWALT Mini Inflator & Powerbank



PART #	DESCRIPTION	DIST. COST	MSRP
DXIF 1202	USB TYPE C CHARGING, UP TO 150 PSI, ACCESSORIES INCLUDED	\$45.23	\$69.99

## DeWALT 18" AC/DC Fan



AC ADAPTER INCLUDED



**20V**<sup>MAX</sup>

PART #	DESCRIPTION	DIST. COST	MSRP
DXF 1850B	20V MAX OR PLUGGED IN, 4000 CFM, 270 DEGREE TILTING, 3 SPEEDS	\$175.34	\$239.99

### DeWALT 1,800 lbs Ratchet Strap



PART #	DESCRIPTION	DIST. COST	MSRP
DXBC 18002	2 PK, COATED S-HOOKS, 1.25" X 12'	\$21.00	\$34.99
DXBC 18004	4 PK, COATED S-HOOKS, 1.25" X 12'	\$39.25	\$64.99

### DeWALT 1,500 lbs Ratchet Strap



PART #	DESCRIPTION	DIST. COST	MSRP
DXBC 15006X	6 PACK, COATED S-HOOKS, 1" X 10', STORAGE BAG	\$33.79	\$54.99

### DeWALT 3,000 - 5,000 lbs Ratchet Strap



PART #	DESCRIPTION	DIST. COST	MSRP
DXBC 33002	2 PACK, DOUBLE J-HOOKS, 3000 LBS, 1.5" X 16'	\$27.00	\$44.99
DXBC 33004	4 PACK, DOUBLE J-HOOKS, 3300 LBS, 1.5" X 16'	\$50.72	\$84.99
DXBC 50002	2 PACK, DOUBLE J-HOOKS, 5000 LBS, 1.5" X 16'	\$36.00	\$59.99

### DeWALT 10,000 lbs Chain Strap



PART #	DESCRIPTION	DIST. COST	MSRP
DXBC 10000C	STEEL CHAINS & GRAB HOOKS, 2" X 30'	\$39.01	\$64.99

### DeWALT 10,000 lbs Ratchet Strap



PART #	DESCRIPTION	DIST. COST	MSRP
DXBC 10000F	COATED FLAT HOOKS, 2" X 27'	\$26.99	\$44.99

### DeWALT 10,000 lbs Ratchet Strap



PART #	DESCRIPTION	DIST. COST	MSRP
DXBC 10000J	COATED DOUBLE J-HOOKS, 2" X 27'	\$26.99	\$44.99

### DeWALT 40,000 lbs Recovery Strap



PART #	DESCRIPTION	DIST. COST	MSRP
DXBC 40000	LOOPED ENDS, PROTECTIVE SLEEVES 4" X 30'	\$89.99	\$149.99

### DeWALT 10,000 lbs Axle Strap



PART #	DESCRIPTION	DIST. COST	MSRP
DXBC 80004	REINFORCED D-RINGS, PROTECTIVE SLEEVE, 24"	\$8.53	\$12.99
DXBC 80003	REINFORCED D-RINGS, PROTECTIVE SLEEVE, 36"	\$9.61	\$14.99

## DeWALT Utility Straps



PART #	DESCRIPTION	DIST. COST	MSRP
DXBC 90060	2 PACK, 1.25" X 12', LIGHT DUTY APPLICATIONS	\$10.38	\$16.99

## DeWALT Cam Buckle S-Hook



PART #	DESCRIPTION	DIST. COST	MSRP
DXBC 90042	2 PACK, 1" X 12', 1500 LBS, S-HOOK		
DXBC 90043	2 PACK, 1.25" X 14', 2000 LBS, S-HOOK		
DXBC 90044	2 PACK, 1" X 12', 3000 LBS, S-HOOK		

## DeWALT Round Strap Bungee



PART #	DESCRIPTION	DIST. COST	MSRP
DXBC 300244	4 PACK, QUICK PULL, STEEL CORE HOOKS, 24"	\$10.33	\$16.99
DXBC 300364	4 PACK, QUICK PULL, STEEL CORE HOOKS, 36"	\$12.41	\$18.99
DXBC 300484	4 PACK, QUICK PULL, STEEL CORE HOOKS, 48"	\$14.47	\$21.99

## DeWALT Cooler



PART #	DESCRIPTION	DIST. COST	MSRP
DXC 45QT	DEWALT 45 QUART COOLER	\$209.37	\$299.00
DXC 65QT	DEWALT 65 QUART COOLER	\$277.02	\$399.00

## DeWalt 11,000 lbs Soft Loop Strap



PART #	DESCRIPTION	DIST. COST	MSRP
DXBC 80002	4 PACK, PLIABLE LOOPED ENDS	\$13.50	\$21.99

## DeWALT Cam Buckle Lashing Strap



PART #	DESCRIPTION	DIST. COST	MSRP
DXBC 90045	2 PACK, SEWN-IN PULL LOOP, 1" X 10', 1500 LBS	\$15.58	\$24.99
DXBC 90046	2 PACK, SEWN-IN PULL LOOP, 1.25" X 14', 2000 LBS	\$18.70	\$29.99
DXBC 90047	2 PACK, SEWN-IN PULL LOOP, 2" X 16', 3000 LBS	\$25.96	\$42.99

## DeWALT Flat Strap Bungee



PART #	DESCRIPTION	DIST. COST	MSRP
DXBC 301424	4 PACK, QUICK PULL, STEEL CORE HOOKS, 24"	\$11.37	\$18.99
DXBC 301436	4 PACK, QUICK PULL, STEEL CORE HOOKS, 36"	\$13.43	\$20.99
DXBC 301448	4 PACK, QUICK PULL, STEEL CORE HOOKS, 48"	\$15.51	\$23.99

## DeWALT Air Cooler



**20V** MAX

PART #	DESCRIPTION	DIST. COST	MSRP
DXACN 01	DEWALT 20V MAX PORTABLE AIR COOLER (BARE TOOL)	\$266.97	\$359.99

## DeWALT Drinkware



PART #	DESCRIPTION	DIST. COST	MSRP
DXC 14 CM BS	14 OZ COFFEE MUG, BLACK	\$21.44	\$32.99
DXC 14 CM SS	14 OZ COFFEE MUG, STAINLESS STEEL	\$21.44	\$32.99
DXC 14 CM YS	14 OZ COFFEE MUG, YELLOW	\$21.44	\$32.99

## DeWALT Drinkware



PART #	DESCRIPTION	DIST. COST	MSRP
DXC 30 OZ TBS	30 OZ POWDER COATED TUMBLER, BLACK	\$22.74	\$34.99
DXC 30 OZ TSS	30 OZ POWDER COATED TUMBLER, STAINLESS STEEL	\$22.74	\$34.99
DXC 30 OZ TYS	30 OZ POWDER COATED TUMBLER, YELLOW	\$22.74	\$34.99

## DeWALT 60w Type C to Type C



PART #	DESCRIPTION	DIST. COST	MSRP
131 0021 DW2	100 WATT, KEVLAR FIBER, 10 FT	\$21.37	\$29.99

## DeWALT USB to Lightning Cable



PART #	DESCRIPTION	DIST. COST	MSRP
131 1359 DW2	KEVLAR FIBER, 4 FT	\$17.28	\$24.99
131 1325 DW2	KEVLAR FIBER, 6 FT	\$22.15	\$34.99
131 1326 DW2	KEVLAR FIBER, 10 FT	\$26.37	\$39.99

## DeWALT Drinkware



PART #	DESCRIPTION	DIST. COST	MSRP
DXC 20 OZ TBS	20 OZ POWDER COATED TUMBLER, BLACK	\$19.49	\$29.99
DXC 20 OZ TSS	20 OZ POWDER COATED TUMBLER, STAINLESS STEEL	\$19.49	\$29.99
DXC 20 OZ TYS	20 OZ POWDER COATED TUMBLER, YELLOW	\$19.49	\$29.99

## DeWALT 100w Type C to Type C



PART #	DESCRIPTION	DIST. COST	MSRP
131 0006 DW2	100 WATT, KEVLAR FIBER, 4 FT	\$19.94	\$29.99
131 0007 DW2	100 WATT, KEVLAR FIBER, 6 FT	\$24.93	\$34.99

## DeWALT Type C to USB



PART #	DESCRIPTION	DIST. COST	MSRP
131 1361 DW2	KEVLAR FIBER, 4 FT	\$12.49	\$19.99
131 1348 DW2	KEVLAR FIBER, 6 FT	\$16.75	\$24.99
131 1349 DW2	KEVLAR FIBER, 10 FT	\$19.25	\$29.99

## DeWALT USB-C to Lightning Cable



PART #	DESCRIPTION	DIST. COST	MSRP
131 1357 DW2	KEVLAR FIBER, 4 FT	\$25.65	\$34.99

### DeWALT USB-C to USB



PART #	DESCRIPTION	DIST. COST	MSRP
131 1362 DW2	KEVLAR FIBER, 4 FT	\$13.67	\$19.99
131 1354 DW2	KEVLAR FIBER, 6 FT	\$18.18	\$26.99

### DeWALT 2 Port USB C Wall Charger



PART #	DESCRIPTION	DIST. COST	MSRP
141 0038 DW2	ANGLED PORTS, PROVIDES CURRENT UP TO 2.4A	\$28.50	\$39.99

### DeWALT 2-Port PD Car Charger



PART #	DESCRIPTION	DIST. COST	MSRP
141 0479 DW2	USB & USB C PD QUICK CHARGE, 49.5 W PD & PPS 30W	\$31.00	\$44.99

### DeWALT 4-Port Mobile USB PD Charger



PART #	DESCRIPTION	DIST. COST	MSRP
141 9009 DW2	SIMULTANEOUS 4-PORT, FAST CHARGING	\$38.45	\$54.99

### DeWALT 3 in 1 Type C Splitter



PART #	DESCRIPTION	DIST. COST	MSRP
131 0099 DW2	100 WATTS, TYPE C TO TYPE C, 6 FT	\$32.05	\$44.99

### DeWALT 3-port 65w PD Car Charger



PART #	DESCRIPTION	DIST. COST	MSRP
141 0036 DW2	2 USB-C & 1 USB-A QC PORT, 65W PD FAST CHARGING	\$34.56	\$49.99

### DeWALT 120w 2-Port PD Car Charger



PART #	DESCRIPTION	DIST. COST	MSRP
141 0484 DW2	120W 2-PORT PPS CHARGER, CHARGE 2 DEVICES AT ONCE WITH FAST CHARGING	\$59.61	\$84.99

### DeWALT 2-Port 100w GAN Wall Charger



PART #	DESCRIPTION	DIST. COST	MSRP
131 0874 DW2	TYPE C, SUITABLE FOR DCB094K USB CHARGING KIT	\$85.49	\$119.99

### DeWALT 4-Port PD Charging Station



PART #	DESCRIPTION	DIST. COST	MSRP
131 1328 DW2	100W, 3 TYPE C & 1 USB PORT, 6 FT CORD	\$99.74	\$139.99

### DeWALT Magnetic Dash & Vent



PART #	DESCRIPTION	DIST. COST	MSRP
204 0017 DW2	WIRELESS CHARGER & CAR MOUNT, 360° ROTATION, UP TO 15W	\$48.84	\$69.99

### DeWALT Pro Max Neckband Earphones



PART #	DESCRIPTION	DIST. COST	MSRP
190 2093 DW2	WIRELESS & BUILT-IN SPEAKERS, 60+ HRS PLAYTIME, RATED IPX6 WATER RESISTANCE	\$103.92	\$139.99

### DeWALT Pro X-2 True Wireless Earbuds



PART #	DESCRIPTION	DIST. COST	MSRP
190 2097 DW2	JOBBSITE PRO X-2 ANC TRUE WIRELESS EARBUDS, CHARGING CASE, 38 DB SOUND LEVEL	\$121.17	\$169.99

### DeWALT Magnetic Wireless Charger



PART #	DESCRIPTION	DIST. COST	MSRP
141 0006 DW2	15W CHARGING WITH MAGNETIC ALIGNMENT, 4MM / M4 & DRYWALL ANCHORS INCLUDED	\$40.24	\$59.99

### DeWALT Jobsite Pro Wireless Earphones



PART #	DESCRIPTION	DIST. COST	MSRP
190 2091 DW2 A	NOISE REDUCTION TECHNOLOGY, 30+ HOUR PLAYTIME, RATED IPX6 FOR WATER RESISTANCE	\$72.27	\$99.99

### DeWALT Open-Ear Pro Earbuds



PART #	DESCRIPTION	DIST. COST	MSRP
190 2096 DW2	UP TO 44 HOURS PLAYTIME, RICH BASS WITH POWERFUL DRIVERS	\$129.76	\$179.99

### DeWALT Pro-X1 True Wireless Earbuds



PART #	DESCRIPTION	DIST. COST	MSRP
190 2092 DW2	SMART SENSOR PAUSES WHEN EARBUDS REMOVED, UP TO 30 HOURS PLAYTIME & IPX6 WATER RESISTANCE RATING	\$266.97	\$359.99

## DeWALT Jobsite Pro Wearable Speakers



PART #	DESCRIPTION	DIST. COST	MSRP
190 1148 DW2	PRO AUDIO SOUND, OVERSIZED BUTTONS, MAGNET ALLOWS YOU TO AFFIX SPEAKER ANYWHERE	\$72.27	\$99.99

## DeWALT Fall Protection Harness



PART #	DESCRIPTION	DIST. COST	MSRP
DXFP 512001	5-POINT FALL PROTECTION HARNESS W/ PASS-THRU CHEST & LEG BUCKLES	\$64.50	\$89.99

## DeWALT Single Leg Tool Lanyard



ANSI 121-2018

PART #	DESCRIPTION	DIST. COST	MSRP
DXDP 720200	ELASTIC CORD CINCH W/ BARREL LOCK FOR TOOL ATTACHMENT, EXTENDED LENGTH 51"	\$21.50	\$29.99

## DeWALT 2-Wheel Steel Dolly



Runs on  
STEEL CORE  
FLAT FREE  
PU WHEEL

PART #	DESCRIPTION	DIST. COST	MSRP
DXWT-200	660 LBS CAP., MOVE OVERSIZED PANELS, SHEETS SINGLE-HANDEDLY, HINGE MECHANISM	\$144.83	\$239.99
DXWT-201	1,100 LBS CAP., MOVE OVERSIZED PANELS, SHEETS SINGLE-HANDEDLY, HINGE MECHANISM	\$150.63	\$249.99

## DeWALT Rooftop Safety Kit



PART #	DESCRIPTION	DIST. COST	MSRP
DXFP 110050	INCLUDES D1000 HARNESS, REUSABLE ROOFTOP ANCHOR, 50FT. LIFELINE & STORAGE CONTAINER	\$179.16	\$249.99

## DeWALT Reusable Rooftop Anchor



PART #	DESCRIPTION	DIST. COST	MSRP
DXFP 842001	HINGED DESIGN ADAPTS TO VARYING ROOF PITCHES, STEEL, USED WITH SCREWS OR NAILS	\$35.83	\$49.99

## DeWALT 6' Energy Absorbing Lanyard



PART #	DESCRIPTION	DIST. COST	MSRP
DXFP 612111	BUILT-IN ENERGY ABSORBER, FALL INDICATOR LETS YOU KNOW WHEN A FALL HAS OCCURRED	\$61.63	\$89.99

## DeWALT Steel Platform Truck



Runs on  
STEEL CORE  
FLAT FREE  
PU WHEEL

PART #	DESCRIPTION	DIST. COST	MSRP
DXWT-504	FOLDABLE HANDLE, OVERSIZED FLAT FREE PU WHEELS, 880 LBS CAPACITY	\$176.11	\$239.99

## DeWALT Steel-P Handle Truck



Runs on  
**STEEL CORE  
FLAT FREE  
PU WHEEL**

PART #	DESCRIPTION	DIST. COST	MSRP
DXWT-506LS	P-HANDLE DESIGN, FLAT-FREE DXWT-508PU WHEELS, 880 LBS LOAD CAPACITY	\$157.41	\$199.99

## DeWALT Steel-P Handle Truck



Runs on  
**STEEL CORE  
FLAT FREE  
PU WHEEL**

PART #	DESCRIPTION	DIST. COST	MSRP
DXWT-202	PLATE & DRYWALL CART, FOLDABLE, ANTI-SLIP SURFACE, 1,100 LBS CAPACITY	\$176.82	\$299.99

## DeWALT Steel Handle Truck



Runs on  
**STEEL CORE  
FLAT FREE  
PU WHEEL**

PART #	DESCRIPTION	DIST. COST	MSRP
DXWT-502	REGULAR HANDLE DESIGN ALLOWS FOR INTEGRATED KNUCKLE PROTECTION, 800 LBS CAPACITY	\$147.18	\$199.99

## DeWALT Foldable Hand Truck



PART #	DESCRIPTION	DIST. COST	MSRP
DXWT-FT512	FOLDABLE, OVERSIZED TUBING W/ EPOXY BASED COAT, 400 LBS CAPACITY	\$152.88	\$199.99

## DeWALT 4 in 1 Hand Truck



Runs on  
**STEEL CORE  
FLAT FREE  
PU WHEEL**

PART #	DESCRIPTION	DIST. COST	MSRP
DXWT-500	P-HANDLE DESIGN, EXTRA WIDE AND EXTENDABLE LOADING PLATE, 400 / 800 LBS CAPACITY	\$173.72	\$229.99

## Stanley Hand Truck w/ Folding Plate

\*WHEELS NOT AS ILLUSTRATED



Runs on  
**STEEL CORE  
FLAT FREE  
PU WHEEL**

PART #	DESCRIPTION	DIST. COST	MSRP
SXWT-MT520-PU	EXTRA LARGE LOADING PLATE, HEAVY DUTY CASTORS, 440 LBS CAPACITY	\$179.16	\$249.99

### Stanley Hand Truck w/ Large Plate



PART #	DESCRIPTION	DIST. COST	MSRP
SXWT-HT535-PU	PLASTIC HANDLES FOR GRIP & FINGER PROTECTION, EXTRA LARGE PLATFORM, 440 LBS CAP.	\$147.18	\$199.99

### Stanley Hand Truck w/ Handles



PART #	DESCRIPTION	DIST. COST	MSRP
SXWT-HT539-PU	COMMERCIAL HAND TRUCK W/ STEEL CONSTRUCTION, 800 LB CAPACITY	\$179.16	\$249.99

### Stanley Heavy-Duty Multi Truck



PART #	DESCRIPTION	DIST. COST	MSRP
SXWT-MT515-PU	HEAVY DUTY INDUSTRIAL CONSTRUCTION, CAN BE USED AT HAND OR PLATFORM TRUCK	\$266.78	\$349.99

### Stanley 2-in-1 Folding Truck



PART #	DESCRIPTION	DIST. COST	MSRP
SXWT-FT585 SP	HAND & PLATFORM CART IN ONE, MADE W/ STEEL, NYLON & POLY-PROPELENE, 150 / 300 LBS CAP.	\$81.66	\$139.99

### Stanley Foldable Hand Truck



PART #	DESCRIPTION	DIST. COST	MSRP
SXWT-FT580 SP	TPR GRIP HANDLE, COMES WITH BUNGEE CORD TO STRAP LOADS, 150 LBS CAPACITY	\$38.17	\$64.99

### Stanley Folding Stair Climber



PART #	DESCRIPTION	DIST. COST	MSRP
SXWTD-FT584	MADE W/ STEEL, NYLON & POLYPROPELENE, INCLUDES PLASTIC CORD, 70 / 140 LBS CAPACITY	\$41.71	\$59.99

### Stanley Folding Hand Truck



PART #	DESCRIPTION	DIST. COST	MSRP
SXWTD-FT582	MADE W/ STEEL, NYLON & POLYPROPELENE, 220 LBS CAP.	\$58.39	\$79.99

### Stanley 2-in-1 Folding Truck



PART #	DESCRIPTION	DIST. COST	MSRP
SXWT-FT586	MADE W/ STEEL, NYLON & POLYPROPELENE, HAND & PLATFORM TRUCK 150 / 300 LBS CAP.	\$95.89	\$129.99

### Stanley Hand Truck



PART #	DESCRIPTION	DIST. COST	MSRP
SXWTI-HT514	HEAVY DUTY, LARGE PNEUMATIC WHEELS, FOLDABLE PLATFORM, STAIR GUIDES, 440 LBS CAPACITY	\$192.13	\$259.99

### Stanley Folding Hand Truck



PART #	DESCRIPTION	DIST. COST	MSRP
SXWTD-FT500	LIGHTWEIGHT DESIGN, INCLUDES ELASTIC CORD IN SMALL STORAGE CONTAINER, 150 LBS CAPACITY	\$41.49	\$59.99

### Stanley Folding Hand Truck



PART #	DESCRIPTION	DIST. COST	MSRP
SXWTD-FT521	3-WHEELED DESIGN, SLIDES INTO ITSELF FOR STORAGE, 260 LBS CAPACITY	\$87.28	\$119.99

### Stanley Platform Truck



PART #	DESCRIPTION	DIST. COST	MSRP
SXWT-PC537	4 BALL BEARING WHEELS, 2 SWIVEL CASTERS WITH BRAKES, 330 LBS CAPACITY	\$64.67	\$119.99
SXWT-PC538	4 BALL BEARING WHEELS, 2 SWIVEL CASTERS WITH BRAKES, 660 LBS CAPACITY	\$109.90	\$169.99

### Stanley Platform Truck



PART #	DESCRIPTION	DIST. COST	MSRP
SXTWI-PC510	HEAVY DUTY, 4-WHEELED ALUMINUM PLATFORM, TUBING MADE OF STEEL, 330 LBS CAPACITY	\$131.21	\$179.99

### Stanley Platform Truck



PART #	DESCRIPTION	DIST. COST	MSRP
SXWTD-PC517	4-WHEELED UTILITY TRUCK, TUBING MADE OF ALUMINUM & STAINLESS, 300 LB CAP.	\$72.95	\$99.99

### Black & Decker Folding Double Level Cart



PART #	DESCRIPTION	DIST. COST	MSRP
BXWT-H204	FOOT PEDAL BRAKE, REMOVABLE WHEELS, BASKET CLIPS, 45 / 130 LBS CAPACITY	\$151.85	\$199.99

### DeWALT 2-3 Ton Hybrid Garage Jack



PART #	DESCRIPTION	DIST. COST	MSRP
DXALT J830027H	DUAL PUMP, FOLDABLE LIFTING ARM, RUBBER SADDLE PAD, 2 PC KNURLED FOAM HANDLE	\$296.11	\$399.99

### DeWALT 3 Ton Aluminum Jack



PART #	DESCRIPTION	DIST. COST	MSRP
DXALTQ 22001	NARROW & CONTOURED CHASSIS DESIGN, OVERLOAD & BYPASS SAFETY VALVES	\$436.62	\$649.99

### DeWALT 6 Ton Heavy Duty Jack Stand



PART #	DESCRIPTION	DIST. COST	MSRP
DXALT J46005A	SADDLE BASE TO IMPROVE STABILITY, DOUBLE LOCKING, STEEL & EXTENDABLE FEET PADS	\$97.25	\$139.99

### DeWalt 3 Ton Garage Low Profile Jack



PART #	DESCRIPTION	DIST. COST	MSRP
DXALT 830026 XHB	LOW PROFILE & SUV W/ ADAPTOR, DUAL PUMP, V SHAPE, NYLON WHEELS, RUBBER SADDLE PAD	\$209.92	\$299.99

### DeWALT 3 Ton Aluminum Jack



PART #	DESCRIPTION	DIST. COST	MSRP
DXALT 830003 XL	DUAL PUMP, AIRCRAFT ALUMINUM, SAPPHIRE ANODIZED FINISH, RUBBER SADDLE PAD	\$341.82	\$489.99

### DeWALT 12 Ton Heavy Duty Jack Stand



PART #	DESCRIPTION	DIST. COST	MSRP
DXALTTJZ 120006	MULTI-PURPOSE DESIGN, CHROMED SAFETY PIN, ROBOTIC WELDING BASE	\$189.10	\$269.99

### DeWALT 12 / 20 Ton Hydraulic Bottle Jack



PART #	DESCRIPTION	DIST. COST	MSRP
DXALTQ 12007	12 TON, WELDED BASE, EVEN WALL THICKNESS, WEAR-RESISTANT SURFACE	\$177.33	\$259.99
DXALTQ 20007	20 TON, WELDED BASE, EVEN WALL THICKNESS, WEAR-RESISTANT SURFACE	\$205.23	\$299.99

### DeWALT 4 Ton Super Duty Floor Jack



PART #	DESCRIPTION	DIST. COST	MSRP
DXALTTJ 840055	DUAL PUMP, MAGNETIC PANEL FOR SMALL PARTS & TOOLS, LOW PROFILE	\$396.17	\$549.99

### DeWALT 7 Ton Heavy Duty Jack Stand



PART #	DESCRIPTION	DIST. COST	MSRP
DXALTTJZ 070006	MULTI-PURPOSE DESIGN, CHROMED SAFETY PIN, ROBOTIC WELDING BASE	\$145.31	\$199.99

### DeWALT 22 Ton Heavy Duty Jack Stand



PART #	DESCRIPTION	DIST. COST	MSRP
DXALTTJZ 220006	MULTI-PURPOSE DESIGN, CHROMED SAFETY PIN, ROBOTIC WELDING BASE	\$253.99	\$349.99

### DeWALT 40" Heavy Duty Creeper



PART #	DESCRIPTION	DIST. COST	MSRP
DXALTTJ 6558	MADE OF STEEL, 400 LBS SUPPORT, 360 DEGREE 3.5" SWIVEL CASTERS, FULLY PADDED & ADJUSTABLE	\$184.77	\$249.99

## Universal Filter Bags



PART #	DESCRIPTION	DIST. NET	MSRP
ST19-3100	FINE DUST/ DRYWALL 4-9 GAL (3 BAGS)	\$9.04	\$15.99
ST19-3101	FINE DUST/ DRYWALL 9-14 GAL (3 BAGS)	\$9.71	\$16.99
ST19-3102	FINE DUST/ DRYWALL 14-22 GAL (3 BAGS)	\$11.30	\$19.99

## Universal Foam Filter



PART #	DESCRIPTION	DIST. NET	MSRP
ST19-1600	5-18 GAL	\$4.31	\$7.99

## Reusable Paper Filter



PART #	DESCRIPTION	DIST. NET	MSRP
ST19-1500	5-18 GAL	\$7.48	\$12.99

## Universal Cleaning Kit



PART #	DESCRIPTION	DIST. NET	MSRP
ST13-3303	1-1/4" DIA (UTILITY NOZZLE, CREVICE TOOL, ROUND BRUSH)	\$9.71	\$16.99
08-0301	1-7/8" DIA (UTILITY NOZZLE, CREVICE TOOL, ROUND BRUSH)	\$12.04	\$19.99
19-0302	2-1/2" DIA (UTILITY NOZZLE, CREVICE TOOL, ROUND BRUSH)	\$17.22	\$29.99



PART #	DESCRIPTION	DIST. NET	MSRP
ST13-1584	1-1/4" DIA MICRO CLEANING KIT	\$9.31	\$16.99

## Universal High Efficiency Filter Bags



PART #	DESCRIPTION	DIST. NET	MSRP
ST19-4214	4-8 GAL (3 BAGS)	\$12.33	\$21.99
ST19-4112	15-22 GAL (3 BAGS)	\$18.90	\$34.99

## Universal Cartridge Filter



PART #	DESCRIPTION	DIST. NET	MSRP
ST08-2551	2-5 GAL	\$11.21	\$19.99
ST08-2566	5-18 GAL	\$14.11	\$24.99
ST25-1045	HEPA 5-18 GAL	\$21.95	\$39.99
ST08-2587	FOR RIDGID VACUUM	\$17.67	\$29.99

## Universal Car Nozzle



PART #	DESCRIPTION	DIST. NET	MSRP
ST13-4333	1-7/8" DIA	\$4.22	\$7.99

## Universal Vacuum Hose



PART #	DESCRIPTION	DIST. NET	MSRP
ST25-1207	1-1/4" X 8'	\$11.97	\$19.99
ST15-2401	1-7/8"X12' CRUSH PROOF	\$22.28	\$39.99
ST08-2518	2-1/2"X 8' W/2 ENDS & ADAPTOR	\$17.42	\$29.99

## Universal Hose Coupler



PART #	DESCRIPTION	DIST. NET	MSRP
ST19-2748	1-7/8" DIA	\$6.24	\$10.99
ST08-2714	2-1/2" DIA	\$6.24	\$10.99

## Universal Extension Wand



PART #	DESCRIPTION	DIST. NET	MSRP
ST25-1205	1-1/4" X 13-1/2"	\$2.98	\$5.99
ST19-1200	1-7/8" X 20"	\$5.31	\$9.99
ST08-2502	2-1/2" X 20"	\$7.20	\$12.99

## Universal Floor Brush



PART #	DESCRIPTION	DIST. NET	MSRP
ST13-1505	1-1/4" DIA	\$8.71	\$15.99
ST08-2591	2-1/2" DIA	\$12.18	\$21.99

## Universal Gulper Nozzle



PART #	DESCRIPTION	DIST. NET	MSRP
ST13-1588	1-1/4" DIA	\$3.74	\$6.99

## Universal Utility Nozzle



PART #	DESCRIPTION	DIST. NET	MSRP
ST19-1300	1-7/8" DIA	\$4.73	\$8.99
ST08-2503	2-1/2" DIA	\$7.33	\$12.99

## Universal Inflation Nozzle



PART #	DESCRIPTION	DIST. NET	MSRP
ST13-4002	1/4" DIA	\$3.98	\$6.99

## Universal Crevice Tool



PART #	DESCRIPTION	DIST. NET	MSRP
ST13-1508	1-1/4" DIA	\$3.74	\$6.99
ST19-1400	1-7/8" DIA	\$4.73	\$8.99
ST08-2506	2-1/2" DIA	\$7.33	\$12.99

## Universal Floor Nozzle



PART #	DESCRIPTION	DIST. NET	MSRP
ST13-1570	1-1/4" DIA	\$6.24	\$10.99
ST19-1900	1-7/8" DIA	\$6.24	\$10.99

## Universal Round Brush



PART #	DESCRIPTION	DIST. NET	MSRP
ST13-1580	1-1/4" DIA	\$4.61	\$7.99
ST19-2400	1-7/8" DIA	\$4.85	\$8.99
ST08-2401	2-1/2" DIA	\$6.21	\$10.99

## Universal Adaptor



PART #	DESCRIPTION	DIST. NET	MSRP
ST08-2788	4 PIECE KIT (1-1/4"-2-1/2")	\$7.93	\$13.99
ST08-2712	2-1/2"-1-1/4"	\$3.98	\$6.99

## Universal Adaptor



PART #	DESCRIPTION	DIST. NET	MSRP
ST15-1000	1-1/4" TO 2-1/2" DIA	\$3.62	\$6.99

## TV Top Shelf



PART #	DESCRIPTION	DIST. NET	MSRP
SUN ATS106	6" WIDE	\$10.66	\$15.99
SUN ATS112	12" WIDE	\$16.62	\$26.99
SUN ATS124	24" WIDE	\$22.44	\$39.99

## TV Tilt Mount



PART #	DESCRIPTION	DIST. NET	MSRP
SUN TMSDS1113T	FITS 23"-55"	\$20.16	\$34.99

## TV Tilt Mount w/HDMI Cable & Cleaner



PART #	DESCRIPTION	DIST. NET	MSRP
SUN TLR3270TKIT	FITS 37"-80"	\$41.78	\$74.99

## TV Static Mount



PART #	DESCRIPTION	DIST. NET	MSRP
SUN TLS210S	FITS 40"-65"	\$20.85	\$39.99

## TV Tilt Mount



PART #	DESCRIPTION	DIST. NET	MSRP
SUN TLREC3211T	FITS 32"-70"	\$28.96	\$54.99

## TV Tilt Mount



PART #	DESCRIPTION	DIST. NET	MSRP
SUN THREC3816T	FITS 40"-100"	\$67.84	\$109.99

### TV Small Full Motion Mount



PART #	DESCRIPTION	DIST. NET	MSRP
SUN TMX022FM	FITS 13"-37"	\$20.05	\$34.99

### TV Small Full Motion Mount



PART #	DESCRIPTION	DIST. NET	MSRP
SUN TMX102FM	FITS 13"-37"	\$27.82	\$44.99

### TV Medium Full Motion Mount



PART #	DESCRIPTION	DIST. NET	MSRP
SUN TMX104FM	FITS 23"-55"	\$34.78	\$64.99

### TV Large Full Motion Mount Single Arm



PART #	DESCRIPTION	DIST. NET	MSRP
SUN THXSS1364FM	FITS 37"-80"	\$75.28	\$129.99

### TV Large Full Motion Mount



PART #	DESCRIPTION	DIST. NET	MSRP
SUN TLXES4501FM	FITS 37"-70"	\$96.77	\$159.99

### TV Large Full Motion Mount



PART #	DESCRIPTION	DIST. NET	MSRP
SUN THXDDS6415FM	FITS 37"-80"	\$98.02	\$159.99

### TV Extension Mount Pro Series



PART #	DESCRIPTION	DIST. NET	MSRP
SUN TLXDS3105FM	FITS 37"-80" LG TV'S	\$78.23	\$139.99

### TV Tabletop Compact Stand



PART #	DESCRIPTION	DIST. NET	MSRP
SUN TTL6485A	FITS 32"-70"	\$34.78	\$64.99

**BOLTING - 3/8" Pneumatic Impact Wrenches**


**CP7731C**  
Max. Torque  
346 ft.lbs.



**CP7729**  
Max. Torque  
415 ft.lbs.



**CP721**  
Max. Torque  
81 ft.lbs.



**CP6300 RSR**  
Max. Torque  
179 ft.lbs.

PART #	DRIVE SIZE (IN.)	FREE SPEED (RPM)	MAX TORQUE (REV. FT. LBS.)	WEIGHT (LBS.)	LENGTH (IN.)	DIST. NET	MSRP
CHICP7731C	3/8"	9,000	346	2.20	4.33	<b>\$238.65</b>	\$503.82
CHICP7729	3/8"	9,400	415	2.76	6.42	<b>\$296.38</b>	\$625.69
CHICP721	3/8"	15,000	81	1.17	5.51	<b>\$297.95</b>	\$629.00
CHICP6300RSR	3/8"	6,800	179	3.53	5.98	<b>\$430.33</b>	\$681.35

**BOLTING - 1/2" Pneumatic Impact Wrenches**


**CP7732**  
Max. Torque  
450 ft.lbs.



**CP7732C**  
Max. Torque  
461 ft.lbs.



**CP7741**  
Max. Torque  
715 ft.lbs.



**CP7741-2**  
Max. Torque  
715 ft.lbs. (2" Anvil)



**CP7748**  
Max. Torque  
959 ft.lbs.



**CP734H**  
Max. Torque  
425 ft.lbs.



**CP749**  
Max. Torque  
610 ft.lbs.



**CP6500 RS**  
Max. Torque  
627 ft.lbs.

PART #	DRIVE SIZE (IN.)	FREE SPEED (RPM)	MAX TORQUE (REV. FT. LBS.)	WEIGHT (LBS.)	LENGTH (IN.)	DIST. NET	MSRP
CHICP7732	1/2"	9,000	450	2.87	4.41	<b>\$209.52</b>	\$442.32
CHICP7732C	1/2"	9,410	461	2.20	4.25	<b>\$230.35</b>	\$486.29
CHICP7741	1/2"	10,000	715	4.96	7.64	<b>\$206.07</b>	\$435.04
CHICP77412	1/2"	10,000	715	5.18	9.65	<b>\$209.21</b>	\$441.66
CHICP7748	1/2"	7,000	959	4.41	6.89	<b>\$220.69</b>	\$559.90
CHICP734H	1/2"	8,400	425	5.11	7.52	<b>\$226.54</b>	\$528.29
CHICP749	1/2"	6,400	610	5.51	7.01	<b>\$329.15</b>	\$694.87
CHICP6500RS	1/2"	6,400	627	5.84	7.01	<b>\$469.31</b>	\$743.06

## BOLTING - 3/4" Pneumatic Impact Wrenches



**CP7762**  
Max. Torque  
1,050 ft.lbs.



**CP7763**  
Max. Torque  
1,200 ft.lbs.



**CP6763**  
Max. Torque  
1,200 ft.lbs.

**CP6060-P15H**  
w/ Hole  
Max. Torque  
1,100 ft.lbs.



**CP6060-P15R**  
w/ Retaining Ring  
Max. Torque  
1,100 ft.lbs.

PART #	DRIVE SIZE (IN.)	FREE SPEED (RPM)	MAX TORQUE (REV. FT. LBS.)	WEIGHT (LBS.)	LENGTH (IN.)	DIST. NET	MSRP
CHICP7762	3/4"	4,850	1,050	6.39	6.22	<b>\$484.01</b>	\$1,021.79
CHICP7763	3/4"	6,300	1,200	11.50	9.02	<b>\$592.84</b>	\$1,350.86
CHICP6763	3/4"	6,300	1,200	12.10	8.74	<b>\$777.96</b>	\$1,231.76
CHICP6060P15H	3/4"	4,000	1,100	11.60	8.74	<b>\$1,822.95</b>	\$2,886.33
CHICP6060P15R	3/4"	4,000	1,100	11.60	8.74	<b>\$1,822.95</b>	\$2,886.33

## BOLTING - 1" Pneumatic Impact Wrenches



**CPO611P RS**  
Max. Torque  
627 ft.lbs.  
1" Square Drive



**CPO611P RLS**  
Max. Torque  
627 ft.lbs.  
#5 Spline Drive



**CPO611-D28H**  
Max. Torque  
627 ft.lbs.  
1" Square Drive



**CPO611-D28L**  
Max. Torque  
627 ft.lbs.  
#5 Spline Drive

PART #	DRIVE SIZE (IN.)	FREE SPEED (RPM)	MAX TORQUE (REV. FT. LBS.)	WEIGHT (LBS.)	LENGTH (IN.)	DIST. NET	MSRP
CHICP0611PRS	1" DRIVE	3,500	2,800	23.10	10.71	<b>\$3,022.79</b>	\$4,786.08
CHICP0611PRLS	#5 SPLINE	3,500	2,800	23.10	10.71	<b>\$3,271.01</b>	\$5,179.10
CHICP0611D28H	1" DRIVE	3,500	2,800	22.90	14.17	<b>\$3,551.83</b>	\$5,623.74
CHICP0611D28L	#5 SPLINE	3,500	2,800	22.90	14.17	<b>\$3,768.26</b>	\$5,966.41

## GRINDING - Light Duty Die Grinders & Pens



**CP9104Q**  
1/8" Pencil Die Grinder



**CP9161**  
Engraving Pen



**CP9361**  
Engraving Pen



**CP9361-1**  
Engraving Pen Kit w/Case

PART #	FREE SPEED (RPM)	POWER (HP)	WEIGHT (LBS.)	LENGTH (IN.)	DIST. NET	MSRP
CHICP9104Q	60,000	0.05	0.44	5.24	<b>\$157.34</b>	\$332.16
CHICP9161	N/A	N/A	0.31	5.00	<b>\$276.33</b>	\$437.51
CHICP9361	N/A	N/A	0.31	5.00	<b>\$430.02</b>	\$680.87
CHICP93611	N/A	N/A	1.60	11 x 9.5 x 3.2	<b>\$563.54</b>	\$892.27

## GRINDING - 1/4" Pneumatic Die Grinders



PART #	DRIVE SIZE (IN.)	FREE SPEED (RPM)	MAX TORQUE (FT.LBS.)	WEIGHT (LBS.)	LENGTH (IN.)	DIST. NET	MSRP
CHICP875	1/4"	22,500	0.30	1.00	4.90	\$87.11	\$205.34
CHICP876	1/4"	30,000	0.30	0.80	4.80	\$94.80	\$200.14
CHICP872	1/4"	27,000	0.63	1.26	6.50	\$99.11	\$209.23
CHICP860	1/4"	24,000	0.54	1.30	5.80	\$191.54	\$404.35
CHICP7405	1/4"	28,000	0.34	1.10	6.93	\$121.77	\$257.06
CHICP7406	1/4"	23,000	0.34	1.32	6.42	\$136.35	\$287.84
CHICP7408	1/4"	23,000	0.34	1.37	7.68	\$136.46	\$288.08
CHICP7410	1/4"	27,000	0.34	1.43	9.76	\$136.46	\$288.08
CHICP7411	1/4"	22,000	0.56	1.54	7.09	\$177.05	\$373.77

## GRINDING - Angle Grinders



PART #	MAX WHEEL CAP (IN.)	FREE SPEED (RPM)	POWER (HP)	WEIGHT (LBS.)	DIST. NET	MSRP
CHICP7500D	2"	22,000	0.20	1.20	\$222.66	\$470.07
CHICP7550B	5"	12,000	1.10	3.50	\$355.53	\$750.56
CHICP854E	5"	12,000	0.70	3.80	\$400.64	\$845.81
CHICP9121BR	5"	12,000	0.80	4.60	\$305.32	\$644.56
CHICP9123	7"	7,500	1.10	7.50	\$522.23	\$1,102.49

## FINISHING - Sanders



PART #	MAX WHEEL CAP (IN.)	FREE SPEED (RPM)	POWER (HP)	WEIGHT (LBS.)	DIST. NET	MSRP
CHICP301912AF	3"	12,000	0.50	1.40	\$678.15	\$1,073.73
CHICP301920AF	3"	20,000	0.50	1.40	\$678.15	\$1,073.73
CHICP3510	5"	12,000	0.30	1.30	\$232.19	\$490.18
CHICP7215	6"	12,000	0.30	1.70	\$238.95	\$504.45
CHICP7215SVE	6"	12,000	0.30	1.80	\$281.92	\$595.16

## DRILLING - Pneumatic Drills



CP1014 SERIES



CP1114 SERIES



CP1117 SERIES

**See Chart Below For Models, Specs & Prices**

### 1/4" Pneumatic Drills

PART #	CHUCK CAPACITY (IN.)	CHUCK STYLE	FREE SPEED (RPM)	POWER (HP)	DIST. NET	MSRP
CHICP1014P24	1/4"	KEYED	2,400	0.50	<b>\$453.23</b>	\$717.61
CHICP1014P33	1/4"	KEYED	3,300	0.50	<b>\$417.86</b>	\$661.62
CHICP1014P45	1/4"	KEYED	4,500	0.50	<b>\$421.92</b>	\$668.03

### 3/8" Pneumatic Drills

PART #	CHUCK CAPACITY (IN.)	CHUCK STYLE	FREE SPEED (RPM)	POWER (HP)	DIST. NET	MSRP
CHICP1114R26	3/8"	KEYED	2,600	0.50	<b>\$412.46</b>	\$653.07
CHICP1114R40	3/8"	KEYED	4,000	0.50	<b>\$412.46</b>	\$653.07
CHICP1117P26ATEX	3/8"	KEYED	2,600	1.00	<b>\$515.85</b>	\$816.76
CHICP1117P26K	3/8"	KEYED	2,600	1.00	<b>\$402.05</b>	\$636.58
CHICP1117P26KL	3/8"	KEYLESS	2,600	1.00	<b>\$402.05</b>	\$636.58
CHICP1117P32K	3/8"	KEYED	3,200	1.00	<b>\$402.05</b>	\$636.58
CHICP1117P32KL	3/8"	KEYLESS	3,200	1.00	<b>\$402.05</b>	\$636.58
CHICP1117P60K	3/8"	KEYED	6,000	1.00	<b>\$414.04</b>	\$655.57
CHICP1117P60KL	3/8"	KEYLESS	6,000	1.00	<b>\$414.04</b>	\$655.57

### 1/2" Pneumatic Drills

PART #	CHUCK CAPACITY (IN.)	CHUCK STYLE	FREE SPEED (RPM)	POWER (HP)	DIST. NET	MSRP
CHICP1114R05	1/2"	KEYED	500	0.50	<b>\$527.85</b>	\$835.76
CHICP1014P05K	1/2"	KEYED	500	0.50	<b>\$501.68</b>	\$794.34
CHICP1114R09	1/2"	KEYED	900	0.50	<b>\$527.85</b>	\$835.76
CHICP1117P05K	1/2"	KEYED	500	1.00	<b>\$502.93</b>	\$796.30
CHICP1117P05KL	1/2"	KEYLESS	500	1.00	<b>\$502.93</b>	\$796.30
CHICP1117P09K	1/2"	KEYED	900	1.00	<b>\$502.93</b>	\$796.30
CHICP1117P09KL	1/2"	KEYLESS	900	1.00	<b>\$502.93</b>	\$796.30

## DRILLING - Specialty Pneumatic Drills



**CP7300C**  
1/4" Pneumatic Drill



**CP1720R22**  
7/8" Pneumatic Corner Drill

PART #	CHUCK CAPACITY (IN.)	CHUCK STYLE	FREE SPEED (RPM)	POWER (HP)	DIST. NET	MSRP
CHICP7300C	1/4"	KEYED	3,300	0.31	<b>\$164.96</b>	\$348.25
CHICP1720R22	7/8"	MORSE TAPER 2	430	1.19	<b>\$3,087.19</b>	\$4,888.05

## FASTENING - Pneumatic Ratchets



**CP9426**  
1/4" Drive



**CP886**  
3/8" Drive



**CP828**  
3/8" Drive



**CP828H**  
1/2" Drive

PART #	DRIVE SIZE (IN.)	MAX. TORQUE (FT.LBS.)	WEIGHT (LBS.)	LENGTH (IN.)	DIST. NET	MSRP
CHICP9426	1/4"	25.80	1.08	10.24	<b>\$167.27</b>	\$353.13
CHICP886	3/8"	50.20	2.62	10.24	<b>\$122.17</b>	\$257.92
CHICP828	3/8"	51.60	2.43	10.00	<b>\$169.91</b>	\$382.78
CHICP828H	1/2"	51.60	2.43	10.00	<b>\$178.84</b>	\$377.56

## CHIPPING - Pneumatic Needle Scalers



**CP7115**  
14mm Bore



**CP7120**  
25mm Bore



**CP7125**  
21mm Bore

PART #	STROKE (MM)	BORE SIZE	NEEDLE CAPACITY QTY X O.D.(MM)	WEIGHT (LBS.)	DIST. NET	MSRP
CHICP7115	32.00	1/2" / 12mm	12 x 3.00	2.90	<b>\$224.51</b>	\$473.95
CHICP7120	28.40	1" / 24mm	19 x 3.00	6.20	<b>\$280.35</b>	\$591.85
CHICP7125	33.50	1" / 24mm	19 x 3.00	6.20	<b>\$264.89</b>	\$559.23

## ACCESSORIES - Replacement Needles & Chisels



**8951011504**  
29 pcs  
2mm X 120mm



**P100146**  
19 pcs  
3mm X 178mm



**8940159860**  
19 pcs  
3mm X 178mm



**2050499653**  
CP7120  
35mm



**A046073**  
Round Shank  
0.401"

PART #	DESCRIPTION	DIST. NET	MSRP
CHI8951011504	REPLACEMENT NEEDLE SET - 29 PCS.   2MM X 120MM	<b>\$54.60</b>	\$115.27
CHIP100146	REPLACEMENT FLAT NEEDLE SET - 19 PCS.   3MM X 178MM	<b>\$27.26</b>	\$57.56
CHI8940159860	REPLACEMENT NEEDLE SET - 19 PCS.   3MM X 178MM	<b>\$12.91</b>	\$27.24
CHI2050499653	REPLACEMENT CHISEL FOR CP7120   35MM	<b>\$20.42</b>	\$43.12
CHIA046073	REPLACEMENT FLAT CHISEL - ROUND SHANK   0.401"	<b>\$6.96</b>	\$14.69

## CHIPPING - Air Hammers



**CP714**  
0.60" Bore



**CP7110KIT**  
0.75" Bore



**CP7111K**  
0.80" Bore



**CP717K**  
0.80" Bore



**CP7150**  
0.75" Bore  
ROUND 0.401"



**CP7150K**  
0.75" Bore



**CP7165K**  
0.75" Bore



**RA2H**  
0.71" Bore  
1/2" Hex

PART #	BORE SIZE (IN.)	STROKE (MM)	SHANK (SHAPE/SIZE)	POWER (JOULE)	DIST. NET	MSRP
CHICP714	0.60	3.50	ROUND / 0.401	4.70	<b>\$621.59</b>	\$1,312.25
CHICP7110KIT	0.75	2.64	ROUND / 0.401	7.20	<b>\$159.64</b>	\$336.09
CHICP7111K	0.80	2.60	ROUND / 0.401	7.20	<b>\$124.77</b>	\$263.41
CHICP717K	0.80	2.70	ROUND/ 0.498	7.30	<b>\$923.66</b>	\$2,083.46
CHICP7150	0.75	3.50	ROUND / 0.401	9.50	<b>\$97.01</b>	\$204.81
CHICP7150K	0.75	3.50	ROUND / 0.401	9.50	<b>\$140.33</b>	\$296.24
CHICP7165K	0.75	3.50	ROUND / 0.401	11.00	<b>\$319.93</b>	\$675.41
CHIRA2H	0.71	2.28	HEX / 0.50	5.60	<b>\$1,026.62</b>	\$1,625.48

## BOLTING - Manual Torque Wrenches



The CP89 Series Manual Torque Wrenches are available in 1/4" Drive - 1" Drive sizes with a capacity of 50 in.lbs. - 750 ft. lbs.

PART #	DRIVE SIZE (IN.)	TORQUE CAP.	WEIGHT (LBS.)	LENGTH (IN.)	DIST. NET	MSRP
CHICP8905	1/4"	50 - 250 IN.LBS.	2.82	9.65	<b>\$163.58</b>	\$345.34
CHICP8905E	1/4"	5 - 25 NM	2.82	9.65	<b>\$170.86</b>	\$360.72
CHICP8910	3/8"	15 - 75 FT.LBS.	3.31	16.14	<b>\$166.76</b>	\$352.04
CHICP8910E	3/8"	20 - 100 NM	3.31	16.14	<b>\$170.86</b>	\$360.72
CHICP8915	1/2"	40 - 200 NM	3.46	19.49	<b>\$226.51</b>	\$369.02
CHICP8917	1/2"	50 - 250 FT.LBS.	3.88	24.02	<b>\$253.89</b>	\$536.00
CHICP8917E	1/2"	60 - 340 NM	3.88	24.02	<b>\$200.77</b>	\$423.85
CHICP8920	3/4"	100 - 550 FT.LBS.	13.70	41.73	<b>\$859.89</b>	\$1,809.00
CHICP8920E	3/4"	150 - 750 NM	13.70	41.73	<b>\$656.18</b>	\$1,385.27
CHICP8925	1"	150 - 750 FT.LBS.	15.00	49.41	<b>\$843.04</b>	\$1,779.76
CHICP8925E	1"	200 - 1000 NM	15.00	49.41	<b>\$821.38</b>	\$1,734.03

## BOLTING - Pneumatic Torque Wrenches



**CP6613**  
3/4" Drive  
Max. Torque 959 ft.lbs.  
**CP6613 FRL**  
Kit with FRL included



**CP6626**  
1" Drive  
Max. Torque 1,920 ft.lbs.  
**CP6626-FRL**  
Kit with FRL included



**CP6641**  
1" Drive  
Max. Torque 3,020 ft.lbs.  
**CP6641-FRL**  
Kit with FRL included

PART #	DRIVE SIZE (IN.)	MAX. TORQUE @ 6.3 BARS (FT.LBS.)	AIR CONSUMPTION @ LOAD (CFM)	REACTION BAR INCLUDED	WEIGHT (LBS.)	DIST. NET / MSRP
CHICP6613	3/4"	960	48	S-TYPE	9.70	CALL FOR PRICING
CHICP6613FRL	3/4"	960	48	S-TYPE	9.70	CALL FOR PRICING
CHICP6626	1"	1,900	48	S-TYPE	12.50	CALL FOR PRICING
CHICP6626FRL	1"	1,900	48	S-TYPE	12.50	CALL FOR PRICING
CHICP6641	1"	3,100	65	S-TYPE	21.80	CALL FOR PRICING
CHICP6641-FRL	1"	3,100	65	S-TYPE	21.80	CALL FOR PRICING

## BOLTING - Cordless Torque Wrenches

**CP8613**  
3/4" Drive  
960 ft.lbs.  
**CP8613C**  
"Connected"  
**CP8613CQ**  
"Connected Quality"



**CP8626**  
1" Drive  
1,910 ft.lbs.  
**CP8626C**  
"Connected"  
**CP8626CQ**  
"Connected Quality"



**CP8641**  
1" Drive  
3,020 ft.lbs.  
**CP8641C**  
"Connected"  
**CP8641CQ**  
"Connected Quality"



**CP8681**  
1-1/2" Drive  
5,970 ft.lbs.  
**CP8681C**  
"Connected"  
**CP8681CQ**  
"Connected Quality"



\*All Units Include Case, 2X 36V Batteries & Charger - Please Contact Us For More Information

PART #	DRIVE SIZE	MAX. TORQUE (FT.LBS.)	BLUETOOTH CONNECTED	DOWNLOAD DATA TO EXCEL	DIST. NET / MSRP
CHICP8613	3/4"	960	NO	NO	CALL FOR PRICING
CHICP8613C	3/4"	960	YES	NO	CALL FOR PRICING
CHICP8613CQ	3/4"	960	YES	YES	CALL FOR PRICING
CHICP8626	1"	1,910	NO	NO	CALL FOR PRICING
CHICP8626C	1"	1,910	YES	NO	CALL FOR PRICING
CHICP8626CQ	1"	1,910	YES	YES	CALL FOR PRICING
CHICP8641	1"	3,020	NO	NO	CALL FOR PRICING
CHICP8641C	1"	3,020	YES	NO	CALL FOR PRICING
CHICP8641CQ	1"	3,020	YES	YES	CALL FOR PRICING
CHICP8681	1-1/2"	5,970	NO	NO	CALL FOR PRICING
CHICP8681C	1-1/2"	5,970	YES	NO	CALL FOR PRICING
CHICP8681CQ	1-1/2"	5,970	YES	YES	CALL FOR PRICING

## BOLTING - Vehicle Service Cordless Torque Wrenches

### CP8609C

Wheel Service Tool  
Stand Alone Version

### CP8609CC

Wheel Service Tool  
Basic Bluetooth  
"Connected" Version

### CP8609CCQ

Wheel Service Tool  
Deluxe Bluetooth "Connected Quality"  
Version with Downloadable  
Data to Excel



**CP8609 Wheel Service Tools:** 3 Versions of Connectivity, All 1" Drive, 665 ft. lbs. Max Torque. Each Tool comes complete with 2 x CP 36V Batteries, Charger and Deluxe Carrying Case.

PART #	DRIVE SIZE (IN.)	MAX. TORQUE (FT.LBS.)	BLUETOOTH CONNECTED	DOWNLOAD DATA TO EXCEL	DIST. NET	MSRP
CHICP8609C	1"	665	NO	NO	CALL FOR PRICING	CALL FOR PRICING
CHICP8609CC	1"	665	YES	NO	CALL FOR PRICING	CALL FOR PRICING
CHICP8609CCQ	1"	665	YES	YES	CALL FOR PRICING	CALL FOR PRICING

## ACCESSORIES - Air Flex

### 8940171569

1/4" NPT  
Bottom Weighted  
45 Deg. Fitting w/  
360 Deg. Swivel

### 8940171571

3/8" NPT  
Bottom Weighted  
45 Deg. Fitting w/  
360 Deg. Swivel

### 8940171567

1/2" NPT  
Bottom Weighted  
45 Deg. Fitting w/  
360 Deg. Swivel

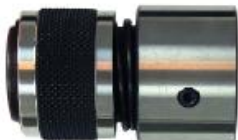


**A Must for All Pneumatic Tools.**

**No More Tangled Hoses. The Swivel Fitting Allows The Hose to Drop at the Operator's Side**

PART #	DIST. NET	MSRP
CHI8940171569	\$98.91	\$208.81
CHI8940171571	\$131.28	\$277.15
CHI8940171567	\$131.28	\$277.15

## ACCESSORIES - Miscellaneous



### 8940158924



### C123029



### 8940162768

PART #	DESCRIPTION	DIST. NET	MSRP
CHI8940158924	QUICK CHANGE RETAINER - CHISEL HOLDER	\$17.92	\$37.82
CHIC123029	BUSHING - COLLET HOLDER	\$14.93	\$31.51
CHI8940162768	2" GRINDING WHEEL #60 (PACK OF 5)	\$22.89	\$48.33

**PLEASE CONTACT US FOR PRICE AND DELIVERY ON ANY CHICAGO PNEUMATIC INDUSTRIAL TOOL ACCESSORIES**



# FEIN

## Oscillating Tools - Cordless



#71293661090



#71293861090



#71293862090



#71293665090

PART #	DESCRIPTION	DIST. NET	MSRP
71293661090	AMM700 MAX TOP SET CORDLESS MULTIMASTER AMPSHARE 18V 4AH	\$754.91	\$954.45
71293861090	AMM500 PLUS TOP SET CORDLESS MULTIMASTER AMPSHARE 18V 4AH	\$622.03	\$786.45
71293862090	AMM500 PLUS CORDLESS MULTIMASTER SELECT AMPSHARE 18V (TOOL ONLY)	\$294.82	\$372.75
71293865090	AMM500 STARTER KIT 2AH CORDLESS MULTIMASTER IN NYLONBAG AMPSHARE 18V	\$380.36	\$480.90

## Oscillating Tools - Coded



#72296769090



#72296770090



#72296962090



#72297264090

PART #	DESCRIPTION	DIST. NET	MSRP
72296769090	MM500 PLUS BASIC MULTIMASTER OSCILLATING TOOL L-BOXX	\$352.96	\$446.25
72296770090	MM500 PLUS TOP MULTIMASTER OSCILLATING TOOL L-BOXX	\$440.99	\$557.55
72296962090	MM700 1.7 BASIC MULTIMASTER L-BOXX	\$688.46	\$870.45
72297264090	MM300 PLUS START MULTIMASTER OSCILLATING TOOL L-BOX X	\$308.94	\$390.60

## Angle Grinders



#72219760390



#72226760090



#72227660090  
#72227760090

PART #	DESCRIPTION	DIST. NET	MSRP
72219760390	WSG7-115 4 1/2" COMPACT ANGLE GRINDER 760W 6.6A 120V SPINDLE LOCK	\$174.41	\$198.45
72226760090	CG15-125BL 5" BRUSHLESS ANGLE GRINDER N09 120V	\$557.34	\$634.20
72227660090	CG15-125BLP 5" BRUSHLESS ANGLE GRINDER PADDLE SWITCH N09 120V	\$557.34	\$634.20
72227760090	CG15-150BLP 6" BRUSHLESS ANGLE GRINDER PADDLE SWITCH N09 120V	\$557.34	\$634.20

## Magnetic Drills



#72704761120



#72705461120



#72705661120



#72705861120

PART #	DESCRIPTION	DIST. NET	MSRP
72704761120	JCM256U UNIVERSAL MAGNETIC CORE DRILL 2-9/16" MT3 120V N12	\$4,475.36	\$5,092.50
72705461120	JMU137QW UNIVERSAL MAGNETIC CORE DRILL 1-3/8" 120V N12	\$2,621.55	\$2,983.05
72705661120	JMU137MQW UNIVERSAL MAGNETIC CORE DRILL 1-3/8" MT2 120V N12	\$2,884.54	\$3,282.30
72705861120	JMU137-2QW UNIVERSAL MAGNETIC CORE DRILL 1-3/8" 2-SPEED 120V N12	\$3,000.81	\$3,414.60

## Magnetic Drills



#72705961090



#72706961090



#72709461090



#72707361090

PART #	DESCRIPTION	DIST. NET	MSRP
72705961090	JME HOLEMAKER III - ENDURANCE CORE DRILL 1-3/8" 120V N09	\$1,570.53	\$1,787.10
72706961090	JME USA202M MAGNETIC CORE DRILL 2" N09 120V60H	\$2,110.34	\$2,401.35
72709461090	JME SHORTSLUGGER II MAGNETIC CORE DRILL N09	\$1,123.00	\$1,277.85
72707361090	JMU137PQW PERMANENT MAGNET UNIVERSAL CORE DRILL 1-3/8" 120V	\$2,897.45	\$3,297.00

## Magnetic Drills



#72725261124



#72725361127



#72732362090



#72732461090

PART #	DESCRIPTION	DIST. NET	MSRP
72725261124	JHM USA101 MAGNETIC DRILL ENDURANCE 1-1/2" 120V	\$1,575.15	\$1,792.35
72725361127	JHM MAGFORCE ENDURANCE CORE DRILL 1-5/8" 120V	\$2,451.76	\$2,789.85
72732362090	JMC MAGFORCE 90 COMPACT SET IN L-BOXX 120V	\$1,940.56	\$2,208.15
72732461090	JME MAGSPEED 150 MAGNETIC DRILL PRESS	\$1,634.20	\$1,859.55

## Dust Extractors

#92030060090  
#92035060090



#92035236090  
#92036236090



PART #	DESCRIPTION	DIST. NET	MSRP
92030060090	92030 TURBO II X AC WET/DRY DUST EXTRACTOR WITH AUTO-CLEAN 120V		
92035060090	92035 SET TURBO I WET/DRY DUST EXTRACTOR 120V 60H N09		
92035236090	92035 TURBO 1 WET/DRY DUST EXTRACTOR 120V N09	\$759.42	\$864.15
92036236090	92036 TURBO II WET/DRY DUST EXTRACTOR 120V N09	\$864.62	\$983.85

## Metal Cutting Saws

#72905361120



#69908120001



#69908030047



PART #	DESCRIPTION	DIST. NET	MSRP
72905361120	MCCS14 SLUGGER METAL CUTTING CHOP SAW 14" 120V	\$907.07	\$1,032.15
69908120001	SLUGGER 9" METAL CUTTING SAW	\$875.70	\$996.45
69908030047	NG120XL FEMI PORTABLE BAND SAW 120V 60 HZ	\$2,061.43	\$2,345.70

## Abrasives

#69908030614  
#69908030615  
#69908030616  
#69908030628  
#69908031106



#69908030609  
#69908030620  
#69908030625  
#69908030629



PART #	DESCRIPTION	DIST. NET	MSRP
69908030614	F-459645 (E-25) SP STAINLESS STEEL CUT OFF WHEEL 5 X .045 X 7/8 TYPE 27	\$3.70	\$7.35
69908030615	F-459652 (E-25) SP STAINLESS STEEL CUT OFF WHEEL 7 X .045 X 7/8 TYPE 27	\$6.33	\$12.60
69908030616	F-459669 (E-25) SP STAINLESS STEEL CUT OFF WHEEL 4 1/2 X .045 X 7/8 TYPE 27	\$3.16	\$6.30
69908030628	F-538341 (E-25) GP CUT-OFF WHEEL - GENERAL PURPOSE STAINLESS 4-1/2 X .045 X 7/8 TYPE 27	\$3.96	\$5.25
69908031106	F-470398 (E-10) SP STAINLESS STEEL GRINDING WHEEL-BLUE 7X1/4X7/8 TYPE 27	\$8.97	\$17.85
69908030609	F-355442 (E-25) SP STAINLESS STEEL CUT OFF WHEEL 4 1/2 X .045 X 7/8 TYPE 1	\$3.16	\$6.30
69908030620	F-499733 (E-25) SP STAINLESS STEEL CUT OFF WHEEL 5 X .040 X 7/8 TYPE 1	\$3.16	\$6.30
69908030625	F-538142 (E-25) GP CUT-OFF WHEEL - GENERAL PURPOSE STAINLESS 5 X .045 X 7/8 TYPE 1	\$3.96	\$5.25
69908030629	F-538781 (E-25) GP CUT-OFF WHEEL - GENERAL PURPOSE STAINLESS 4-1/2 X .045 X 7/8 TYPE 1	\$3.96	\$5.25

## Slugger HSS Annular Cutters



PART #	DESCRIPTION	DIST. NET	MSRP
6313411041	7/16" - PILOT PIN 1"	\$48.11	\$76.65
63134127041	1/2" - PILOT PIN 1"	\$48.11	\$76.65
63134143041	9/16" - PILOT PIN 1"	\$48.11	\$76.65
63134158041	5/8" - PILOT PIN 1"	\$50.10	\$79.80
63134175041	11/16" - PILOT PIN 1"	\$52.73	\$84.00
63134191041	3/4" - PILOT PIN 1"	\$54.71	\$87.15
63134238041	15/16" - PILOT PIN 1"	\$71.84	\$114.45
63134254041	1" - PILOT PIN 1"	\$71.84	\$114.45
63134269041	1-1/16" - PILOT PIN 1"	\$77.11	\$122.85
63134286041	1-1/8" - PILOT PIN 1"	\$88.98	\$141.75
63134302041	1-3/16" - PILOT PIN 1"	\$90.96	\$144.90
63134318041	1-1/4" - PILOT PIN 1"	\$108.75	\$173.25
63134333041	1-5/16" - PILOT PIN 1"	\$108.75	\$173.25
63134349041	1-3/8" - PILOT PIN 1"	\$123.25	\$196.35
63134365041	1-7/16" - PILOT PIN 1"	\$143.03	\$227.85
63134381041	1-1/2" - PILOT PIN 1"	\$161.48	\$257.25
63134397041	1-9/16" - PILOT PIN 1"	\$161.48	\$257.25
63134413041	1-5/8" - PILOT PIN 1"	\$170.05	\$270.90
63134429041	1-11/16" - PILOT PIN 1"	\$177.30	\$282.45
63134445041	1-3/4" - PILOT PIN 1"	\$189.17	\$301.35
63134460041	1-13/16" - PILOT PIN 1"	\$198.40	\$316.05
63134476041	1-7/8" - PILOT PIN 1"	\$219.48	\$349.65
63134492041	1-5/16" - PILOT PIN 1"	\$220.80	\$351.75
63134508041	2" - PILOT PIN 1"	\$228.05	\$363.30
63134524041	2-1/16" - PILOT PIN 1"	\$251.78	\$401.10

## Slugger HSS Annular Cutters



PART #	DESCRIPTION	DIST. NET	MSRP
6313411042	7/16" - PILOT PIN 2"	\$63.93	\$101.85
63134127042	1/2" - PILOT PIN 2"	\$65.25	\$103.95
63134143042	9/16" - PILOT PIN 2"	\$63.93	\$101.85
63134158042	5/8" - PILOT PIN 2"	\$67.23	\$107.10
63134175042	11/16" - PILOT PIN 2"	\$74.48	\$118.65
63134191042	3/4" - PILOT PIN 2"	\$81.73	\$130.20
63134238042	15/16" - PILOT PIN 2"	\$98.87	\$157.50
63134254042	1" - PILOT PIN 2"	\$107.44	\$171.15
63134269042	1-1/16" - PILOT PIN 2"	\$109.41	\$174.30
63134286042	1-1/8" - PILOT PIN 2"	\$126.55	\$201.60
63134302042	1-3/16" - PILOT PIN 2"	\$133.80	\$213.15
63134318042	1-1/4" - PILOT PIN 2"	\$136.44	\$217.35
63134349042	1-3/8" - PILOT PIN 2"	\$150.94	\$240.45
63134365042	1-7/16" - PILOT PIN 2"	\$173.34	\$276.15
63134381042	1-1/2" - PILOT PIN 2"	\$181.25	\$288.75
63134397042	1-9/16" - PILOT PIN 2"	\$203.01	\$323.40
63134413042	1-5/8" - PILOT PIN 2"	\$215.53	\$343.35
63134429042	1-11/16" - PILOT PIN 2"	\$224.75	\$358.05
63134445042	1-3/4" - PILOT PIN 2"	\$238.60	\$380.10
63134460042	1-13/16" - PILOT PIN 2"	\$249.81	\$397.95
63134476042	1-7/8" - PILOT PIN 2"	\$263.64	\$420.00
63134492042	1-5/16" - PILOT PIN 2"	\$280.78	\$447.30
63134508042	2" - PILOT PIN 2"	\$292.65	\$466.20
63134524042	2-1/16" - PILOT PIN 2"	\$309.12	\$492.45

## Annular Cutters Carbide with Pilot Pin 1"



PART #	DESCRIPTION	DIST. NET	MSRP
69908036701	FC130TCT 15/16 x1 in. Carbide Annular Cutter with Pin 3/4" Shank	\$82.39	\$131.25
69908036703	FC111TCT 1/2"x1" Carbide Annular Cutter with Pin 3/4" Shank	\$78.44	\$124.95
69908036705	FC113TCT 9/16"x1" Carbide Annular Cutter with Pin 3/4" Shank	\$78.44	\$124.95
69908036706	FC116TCT 5/8"x1" Carbide Annular Cutter with Pin 3/4" Shank	\$78.44	\$124.95
69908036707	FC119TCT 11/16"x1" Carbide Annular Cutter with Pin 3/4" Shank	\$78.44	\$124.95
69908036708	FC121TCT 3/4"x1" Carbide Annular Cutter with Pin 3/4" Shank	\$78.44	\$124.95
69908036709	FC124TCT 13/16"x1" Carbide Annular Cutter with Pin 3/4" Shank	\$82.39	\$131.25
69908036710	FC127TCT 7/8"x1" Carbide Annular Cutter with Pin 3/4" Shank	\$82.39	\$131.25
69908036711	FC133TCT 1"x1" Carbide Annular Cutter with Pin 3/4" Shank	\$82.39	\$131.25
69908036712	FC136TCT 1-1/16"x1" Carbide Annular Cutter with Pin 3/4" Shank	\$91.61	\$145.95
69908036713	FC139TCT 1-1/8"x1" Carbide Annular Cutter with Pin 3/4" Shank	\$91.61	\$145.95
69908036714	FC142TCT 1-3/16"x1" Carbide Annular Cutter with Pin 3/4" Shank	\$91.61	\$145.95
69908036715	FC145TCT 1-1/4"x1" Carbide Annular Cutter with Pin 3/4" Shank	\$100.84	\$160.65
69908036716	FC148TCT 1-5/16"x1" Carbide Annular Cutter with Pin 3/4" Shank	\$100.84	\$160.65
69908036717	FC151TCT 1-3/8"x1" Carbide Annular Cutter with Pin 3/4" Shank	\$100.84	\$160.65
69908036718	FC154TCT 1-7/16"x1" Carbide Annular Cutter with Pin 3/4" Shank	\$114.68	\$182.70
69908036719	FC157TCT 1-1/2"x1" Carbide Annular Cutter with Pin 3/4" Shank	\$114.68	\$182.70
69908036720	FC160TCT 1-9/16"x1" Carbide Annular Cutter with Pin 3/4" Shank	\$114.68	\$182.70
69908036721	FC163TCT 1-5/8"x1" Carbide Annular Cutter with Pin 3/4" Shank	\$137.75	\$219.45
69908036722	FC166TCT 1-11/16"x1" Carbide Annular Cutter with Pin 3/4" Shank	\$137.75	\$219.45
69908036723	FC169TCT 1-3/4"x1" Carbide Annular Cutter with Pin 3/4" Shank	\$137.75	\$219.45
69908036724	FC172TCT 1-13/16"x1" Carbide Annular Cutter with Pin 3/4" Shank	\$156.21	\$248.85
69908036725	FC175TCT 1-7/8"x1" Carbide Annular Cutter with Pin 3/4" Shank	\$156.21	\$248.85
69908036726	FC178TCT 1-15/16"x1" Carbide Annular Cutter with Pin 3/4" Shank	\$156.21	\$248.85
69908036727	FC181TCT 2"x1" Carbide Annular Cutter with Pin 3/4" Shank	\$178.62	\$284.55
69908036728	FC183TCT 2-1/16"x1" Carbide Annular Cutter with Pin 3/4" Shank	\$178.62	\$284.55

## Annular Cutters Carbide with Pilot Pin 2"



PART #	DESCRIPTION	DIST. NET	MSRP
69908036702	FC230TCT 15/16 x 2 in. Carbide Annular Cutter with Pin 3/4" Shank	\$91.61	\$145.95
69908036729	FC211TCT 1/2"x2" Carbide Annular Cutter with Pin 3/4" Shank	\$88.98	\$141.75
69908036730	FC213TCT 9/16"x2" Carbide Annular Cutter with Pin 3/4" Shank	\$88.98	\$141.75
69908036731	FC216TCT 5/8"x2" Carbide Annular Cutter with Pin 3/4" Shank	\$88.98	\$141.75
69908036732	FC219TCT 11/16"x2" Carbide Annular Cutter with Pin 3/4" Shank	\$88.98	\$141.75
69908036733	FC221TCT 3/4"x2" Carbide Annular Cutter with Pin 3/4" Shank	\$88.98	\$141.75
69908036734	FC224TCT 13/16"x2" Carbide Annular Cutter with Pin 3/4" Shank	\$91.61	\$145.95
69908036735	FC227TCT 7/8"x2" Carbide Annular Cutter with Pin 3/4" Shank	\$91.61	\$145.95
69908036736	FC233TCT 1"x2" Carbide Annular Cutter with Pin 3/4" Shank	\$91.61	\$145.95
69908036737	FC236TCT 1-1/16"x2" Carbide Annular Cutter with Pin 3/4" Shank	\$96.23	\$153.30
69908036738	FC239TCT 1-1/8"x2" Carbide Annular Cutter with Pin 3/4" Shank	\$96.23	\$153.30
69908036739	FC242TCT 1-3/16"x2" Carbide Annular Cutter with Pin 3/4" Shank	\$96.23	\$153.30
69908036740	FC245TCT 1-1/4"x2" Carbide Annular Cutter with Pin 3/4" Shank	\$115.34	\$183.75
69908036741	FC248TCT 1-5/16"x2" Carbide Annular Cutter with Pin 3/4" Shank	\$115.34	\$183.75
69908036742	FC251TCT 1-3/8"x2" Carbide Annular Cutter with Pin 3/4" Shank	\$115.34	\$183.75
69908036743	FC254TCT 1-7/16"x2" Carbide Annular Cutter with Pin 3/4" Shank	\$132.48	\$211.05
69908036744	FC257TCT 1-1/2"x2" Carbide Annular Cutter with Pin 3/4" Shank	\$132.48	\$211.05
69908036745	FC260TCT 1-9/16"x2" Carbide Annular Cutter with Pin 3/4" Shank	\$132.48	\$211.05
69908036746	FC263TCT 1-5/8"x2" Carbide Annular Cutter with Pin 3/4" Shank	\$156.21	\$248.85
69908036747	FC266TCT 1-11/16"x2" Carbide Annular Cutter with Pin 3/4" Shank	\$156.21	\$248.85

PART #	DESCRIPTION	DIST. NET	MSRP
69908036748	FC269TCT 1-3/4"x2" Carbide Annular Cutter with Pin 3/4" Shank	\$156.21	\$248.85
69908036749	FC272TCT 1-13/16"x2" Carbide Annular Cutter with Pin 3/4" Shank	\$181.91	\$289.80
69908036750	FC275TCT 1-7/8"x2" Carbide Annular Cutter with Pin 3/4" Shank	\$181.91	\$289.80
69908036751	FC278TCT 1-15/16"x2" Carbide Annular Cutter with Pin 3/4" Shank	\$181.91	\$289.80
69908036752	FC281TCT 2"x2" Carbide Annular Cutter with Pin 3/4" Shank	\$205.64	\$327.60
69908032826	FC283TCT 2-1/16 x 2 in Carbide Annular Cutter with Pin 3/4 in Shank	\$205.64	\$327.60
69908037302	FC284TCT 2-1/8" x 2" Carbide Annular Cutter with Pin 3/4" Shank	\$201.03	\$320.25
69908037303	FC285TCT 2-3/16" x 2" Carbide Annular Cutter with Pin 3/4" Shank	\$219.48	\$349.65
69908037304	FC286TCT 2-1/4" x 2" Carbide Annular Cutter with Pin 3/4" Shank	\$219.48	\$349.65
69908037305	FC287TCT 2-5/16" x 2" Carbide Annular Cutter with Pin 3/4" Shank	\$219.48	\$349.65
69908037306	FC288TCT 2- 3/8" x 2" Carbide Annular Cutter with Pin 3/4" Shank	\$219.48	\$349.65
69908037307	FC289TCT 2-7/16" x 2" Carbide Annular Cutter with Pin 3/4" Shank	\$243.21	\$387.45
69908037308	FC290TCT 2-1/2" x 2" Carbide Annular Cutter with Pin 3/4" Shank	\$243.21	\$387.45
69908037312	FC293TCT 2-11/16" x 2" Carbide Annular Cutter with Pin 3/4" Shank	\$264.97	\$422.10
69908037313	FC294TCT 2-3/4" x 2" Carbide Annular Cutter with Pin 3/4" Shank	\$264.97	\$422.10
69908037314	FC295TCT 2-13/16" x 2" Carbide Annular Cutter with Pin 3/4" Shank	\$280.12	\$446.25
69908037315	FC296TCT 2-7/8" x 2" Carbide Annular Cutter with Pin 3/4" Shank	\$290.01	\$462.00
69908037316	FC297TCT 2-15/16" x 2" Carbide Annular Cutter with Pin 3/4" Shank	\$290.01	\$462.00
69908037317	FC298TCT 3" x 2" Carbide Annular Cutter with Pin 3/4" Shank	\$355.26	\$565.95
69908037318	FC299TCT 3-1/16" x 2" Carbide Annular Cutter with Pin 3/4" Shank	\$355.26	\$565.95

## Oscillating Accessories



PART #	DESCRIPTION	DIST. NET	MSRP
35222942080	BEST OF E-CUT STARLOCKPLUS WOOD + METAL- N09	\$77.51	\$88.20
35222967010	BEST OF E-CUT STARLOCK WOOD + METAL	\$73.83	\$84.00
35222967070	COMBO STARLOCK TILE WORKING	\$117.19	\$133.35
35222967270	BEST OF STARLOCK METAL N09	\$155.02	\$176.40
35222967290	COMBO STARLOCK RENOVATION PRO N09	\$93.20	\$106.05
35222967300	COMBO E-CUT STARLOCK WOOD N09	\$59.98	\$68.25

## Oscillating Accessories



#63502127290



#63502133290  
#63502134290



#63502151290



#63502160260  
#63502160270  
#63502160290



#63502161260  
#63502161270  
#63502161290

PART #	DESCRIPTION	DIST. NET	MSRP
63502127290	SLP SAW BLADE E-CUT PRECISION HCS 65X50MM 10-PACK	\$155.02	\$176.40
63502133290	STARLOCK SAW BLADE SL E-CUT STANDARD HCS 35X50MM 10-PACK	\$136.56	\$155.40
63502134290	STARLOCK PLUS SLP E-CUT SAW BLADE STANDARD HCS 65X50MM 10-PACK	\$152.25	\$173.25
63502151290	SLP E-CUT SAW BLADE UNIVERSAL BIM 28X60MM 10-PACK	\$154.10	\$175.35
63502160260	STARLOCK SL E-CUT SAW BLADE LONG-LIFE BIM 35X50MM 1-PACK	\$26.76	\$30.45
63502160270	STARLOCK SL E-CUT SAW BLADE LONG-LIFE BIM 35X50MM 3-PACK	\$47.99	\$54.60
63502160290	STARLOCK SL E-CUT SAW BLADE LONG-LIFE BIM 35X50MM 10-PACK	\$137.49	\$156.45
63502161260	STARLOCK PLUS SLP E-CUT SAW BLADE LONG-LIFE BIM 65X50MM 1-PACK	\$17.54	\$19.95
63502161270	STARLOCK PLUS SLP E-CUT SAW BLADE LONG-LIFE BIM 65X50MM 3-PACK	\$51.67	\$58.80
63502161290	STARLOCK PLUS SLP E-CUT SAW BLADE LONG-LIFE BIM 65X50MM 10-PACK	\$154.10	\$175.35

## Carbide Burrs



PART #	DESCRIPTION	DIST. NET	MSRP
69908038002	CBS-8 CARBIDE BURR SET - 8 PIECES- 1/4" SHANK DIA.	\$173.22	\$229.95

## Vise



PART #	DESCRIPTION	DIST. NET	MSRP
90701004020	VERSAMAG SET WITH VISE INCLUDED N09	\$690.22	\$785.40

## Metal Cutting Saw Blades



PART #	DESCRIPTION	DIST. NET	MSRP
63502007500	7" METAL CUTTING SAW BLADE - MILD STEEL MCBL07	\$80.28	\$91.35
63502009540	9" METAL CUTTING SAW BLADE - MILD STEEL MCBL09	\$100.58	\$114.45
63502014600	14" 66 TEETH METAL CUTTING SAW BLADE - MILD STEEL MCBL14	\$219.62	\$249.90
69908120441	8" METAL CUTTING SAW BLADE MILD STEEL 42 TEETH	\$86.74	\$98.70

## Annular Cutters Set



PART #	DESCRIPTION	DIST. NET	MSRP
69908032827	FC791TC 6 PIECE CARBIDE CUTTER SET (1/2, 9/16, 5/8, 3/4, 7/8, 1 IN) 1" DOC	\$512.13	\$815.85
69908032828	FC792TCT 6 PIECE CARBIDE CUTTER SET (1/2, 9/16, 5/8, 3/4, 7/8, 1 PO.) 2" PO. DOC	\$455.45	\$725.55
63134999020	SLUGGER 11-PIECE STRUCTURAL CUTTER SET - 1" DEPTH (7/16 TO 1-1/16) 70350	\$748.09	\$1,191.75
63134999091	6-PIECE HSS CUTTER SET - 1" DOC WITH 2 PILOT PINS	\$299.24	\$476.70
63134999092	6-PIECE HSS CUTTER SET - 2" DOC WITH 2 PILOT PINS	\$468.63	\$746.55

## Contractor TS™ 12' TrueStandout 2 Side Print Nylon Coated



PART #	DESCRIPTION	DIST. NET	MSRP
KOM 93416	16' X 1-1/4"	\$16.22	\$23.99
KOM 93416IM	16'/5M X 1-1/4"	\$16.22	\$23.99
KOM 93425	25' X 1-1/4" FINGER STOP	\$20.40	\$29.99
KOM 79425	25' X 1-1/4" FINGER STOP MAGNETIC	\$21.83	\$30.99
KOM 93425IM	25'/8M X 1-1/4" FINGER STOP	\$20.75	\$29.99
KOM 93435	35' X 1-1/4" FINGER STOP	\$29.57	\$42.99
KOM M93440	40' X 1-1/4" FINGER STOP	\$32.69	\$45.99

## Contractor LT™ 3:1 Ratio Hi Vis Blade Clean Magnetic Hook



PART #	DESCRIPTION	DIST. NET	MSRP
KOM N9100	100' X 1/2"	\$56.41	\$79.99
KOM N9200	200' X 1/2"	\$102.32	\$144.99

## ABS PowerBlade™ Hi-Vis, 2 Side Print



PART #	DESCRIPTION	DIST. NET	MSRP
KOM 52416	16' X 1-1/16"	\$11.68	\$16.99
KOM 52425	25' X 1-1/16"	\$14.55	\$20.99
KOM 52425IE	25' X 1-1/16" INCH/ENGINEER	\$14.55	\$20.99
KOM SL52425	25' X 1-1/16" SELF LOCK	\$16.22	\$23.99
KOM 73425	25' X 1-1/16" MAGNETIC	\$16.10	\$21.99
KOM 52430	30' X 1-1/16"	\$18.13	\$30.99

## SelfLock Evolution™ Push Release 2 Side Print, Hi Vis Dual Hook



PART #	DESCRIPTION	DIST. NET	MSRP
KOM EV28116	16' X 1"	\$11.21	\$18.99
KOM PSE55E	16'/5M X 1"	\$11.21	\$18.99
KOM EV2825	25' X 1"	\$13.12	\$18.99
KOM PSE85E	26'/8M X 1"	\$13.24	\$18.99

## Contractor LR™ Lifetime Retract 2 Side Print Double Nylon Coated



PART #	DESCRIPTION	DIST. NET	MSRP
KOM M16LR	16' X 1"	\$16.77	\$23.99
KOM M25LR	25' X 1"	\$20.60	\$29.99

## LED Tape™ Rechargeable 2 Side Print Dual End Hook



PART #	DESCRIPTION	DIST. NET	MSRP
KOM 25LED	25' X 1"	\$16.77	\$23.99
KOM 25LEDIM	26'/8M X 1"	\$20.60	\$29.99

## Flat Tape™ Adhesive, Steel, Cut to Length



PART #	DESCRIPTION	DIST. NET	MSRP
KOM F12	12' X 1/2"	\$5.61	\$8.99

## Stainless Steel™ Spring & End Hook Non-Glare Blade 2 Side Print



PART #	DESCRIPTION	DIST. NET	MSRP
KOM SS116	16' X 1"	\$17.17	\$24.99
KOM SS125	25' X 1"	\$21.83	\$30.99

## MagGrip™ Pro Magnetic Dual End, 2 Side Print, Nylon Coated



PART #	DESCRIPTION	DIST. NET	MSRP
KOM 7116	16' X 1"	\$13.83	\$19.99
KOM 7125	25' X 1"	\$16.10	\$21.99

## MagGrip™ Magnetic End Acrylic Blade



PART #	DESCRIPTION	DIST. NET	MSRP
KOM 7325	25' X 1" FRACTIONAL	\$12.04	\$17.99
KOM 7425IM	25' X 1" FRACTIONAL INCH/METRIC	\$14.74	\$20.99

## The Professional™ The Tradesman™ Nylon Coated



PART #	DESCRIPTION	DIST. NET	MSRP
KOM 4912	12' X 5/8" THE PROFESSIONAL™	\$5.13	\$6.99
KOM 4912IM	12/3.5M X 5/8" THE PROFESSIONAL™	\$5.13	\$6.99
KOM 4925	25' X 1" THE PROFESSIONAL™	\$9.67	\$13.99
KOM 4925IM	25/7.5M X 1" THE PROFESSIONAL™	\$9.67	\$13.99
KOM 4930IM	30/9M X 1" THE PROFESSIONAL™	\$11.57	\$16.99
KOM T3925	25' X 1" THE TRADESMAN™ NYLON COATED	\$5.68	\$7.99

## Non-Glare Fractional Graduations Assorted Colours



PART #	DESCRIPTION	DIST. NET	MSRP
KOM 3516	16' X 1" ASSORTED COLOURS	\$10.37	\$13.99

## FastBack™ 3:1 Ratio ABS, Bumper, Fiberglass



PART #	DESCRIPTION	DIST. NET	MSRP
KOM 8811	100' X 1/2"	\$21.83	\$30.99

## Gripper™ Steel Long Tape Rubber Jacket Nylon Coated



PART #	DESCRIPTION	DIST. NET	MSRP
KOM 9901	100' X 3/8"	\$18.37	\$25.99
KOM 9901IM	100/30M X 3/8"	\$18.72	\$26.99

## The Chrome Professional™ Nylon Coated High Visibility



PART #	DESCRIPTION	DIST. NET	MSRP
KOM 416HV	16' X 3/4"	\$9.89	\$13.99
KOM 425HV	25' X 1"	\$12.88	\$18.99
KOM 425IEHV	25' X 1" INCH/ENGINEER	\$12.88	\$20.99
KOM 430HV	30' X 1"	\$15.74	\$25.99

## Gripper™ Acrylic Coated, Rubber Jacket



PART #	DESCRIPTION	DIST. NET	MSRP
KOM SM5416	16' X 1" SPEEDMARK BLADE	\$8.35	\$13.99
KOM SM5425	25' X 1" SPEEDMARK BLADE	\$9.43	\$12.99
KOM PG85	8M X 25MM	\$12.28	\$17.99

## TouchLock™ Compact Centre Brake Diameted Scale, Magnetic Case



PART #	DESCRIPTION	DIST. NET	MSRP
KOM 3110	10' X 1/2" ASSORTED COLOURS	\$6.68	\$9.99

## Fiber Reel™ ABS, Bumper, Fiberglass Blade



PART #	DESCRIPTION	DIST. NET	MSRP
KOM 6611IM	100/30M X 1/2"	\$18.37	\$25.99
KOM 6622IM	200/60M X 1/2"	\$28.86	\$41.99
KOM 66330IM	330/100M X 1/2"	\$72.63	\$103.99

## Quick Draw Belt Clip™ Fits Most Brands - 2 Adaptors



PART #	DESCRIPTION	DIST. NET	MSRP
KOM QD1	QUICK DRAW BELT CLIP	\$7.28	\$10.99

**MeterMan™  
Measuring Wheel Series 12**



PART #	DESCRIPTION	DIST. NET	MSRP
KOM ML1212	4' DIA (FEET/INCHES)	\$25.11	\$35.99

**MeterMan™  
Measuring Wheel Series 18**



PART #	DESCRIPTION	DIST. NET	MSRP
KOM ML1812	6' DIA (FEET/INCHES)	\$41.86	\$59.99
KOM ML18M	6' DIA (METERS/DM)	\$41.86	\$59.99

**MeterMan™  
Measuring Wheel 79 Series**



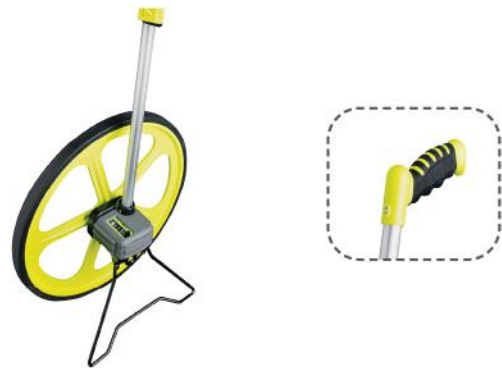
PART #	DESCRIPTION	DIST. NET	MSRP
KOM MK7912	25" DIA (FEET/INCHES)	\$95.77	\$135.99
KOM MK79M	25" DIA (METERS/DM)	\$95.77	\$135.99

**MeterMan™ Measure Marker**



PART #	DESCRIPTION	DIST. NET	MSRP
KOMMKMM12	4' DIA (FEET/INCHES)	\$67.26	\$95.99

**MeterMan™  
Measuring Wheel Series 31, 45, 60**



PART #	DESCRIPTION	DIST. NET	MSRP
KOM MK3112	10" DIA (FEET/INCHES)	\$53.79	\$76.99
KOM MK31M	10" DIA (METERS/DM)	\$53.79	\$76.99
KOM MK4512	14.3" DIA (FEET/INCHES)	\$59.04	\$84.99
KOM MK45M	14.3" DIA (METERS/DM)	\$59.04	\$84.99
KOM MK6012	19" DIA (FEET/INCHES)	\$73.47	\$116.99

**MeterMan™  
Metal Measuring Wheel**



PART #	DESCRIPTION	DIST. NET	MSRP
KOM MMW15	15.5" DIA (FEET/INCHES)	\$152.17	\$216.99

## Cutter Knife Auto Lock



PART #	DESCRIPTION	DIST. NET	MSRP
KOM SNBA4	9MM	\$3.53	\$4.99
KOM LRGA5	18MM	\$6.48	\$9.99
KOM HRGA7	25MM	\$11.07	\$14.99

## Replacement Blades



PART #	DESCRIPTION	DIST. NET	MSRP
KOM SB410	9MM (PACK OF 10)	\$2.92	\$3.99
KOM LB510	18MM (PACK OF 10)	\$4.71	\$5.99
KOM HB710	25MM (PACK OF 10)	\$8.24	\$11.99

## Pruning Saw Folding Blade



PART #	DESCRIPTION	DIST. NET	MSRP
KOM FB240	9-1/2" FOLDING BLADE SAW	\$19.16	\$26.99
KOM FB240B	REPLACEMENT BLADE FOR FB240	\$11.98	\$16.99

## Pruning Saw Curved Blade



PART #	DESCRIPTION	DIST. NET	MSRP
KOM CWC330	13" CURVED BLADE SAW W/ CASE	\$26.35	\$37.99
KOM CWC330B	REPLACEMENT BLADE FOR CWC330	\$19.77	\$28.99

## Cutter Knife Wheel Lock



PART #	DESCRIPTION	DIST. NET	MSRP
KOM SNPW4	9MM	\$5.89	\$8.99
KOM LRGW5	18MM	\$7.30	\$10.99
KOM HNBW7	25MM	\$10.08	\$13.99
KOM HRGW7	25MM	\$11.66	\$15.99

## Utility Knife



PART #	DESCRIPTION	DIST. NET	MSRP
KOM UDFN6	19 MM FOLDING UTILITY KNIFE	\$11.66	\$17.99

## Pruning Saw Folding Curved Blade



PART #	DESCRIPTION	DIST. NET	MSRP
KOM FC210	8" FOLDING CURVED BLADE SAW	\$18.68	\$26.99
KOM FC210B	REPLACEMENT BLADE FOR FC210	\$13.17	\$17.99

## Torch Safe™



PART #	DESCRIPTION	DIST. NET	MSRP
KOM TS1	UTILITY TORCH HOLDER	\$5.84	\$8.99

## StudSensor™



PART #	DESCRIPTION	DIST. NET	MSRP
ZIR64936	EDGE FINDING, LED	\$19.03	\$24.99

## StudSensor™ SL



PART #	DESCRIPTION	DIST. NET	MSRP
ZIR62264	EDGE FINDING, LED, SPOTLITE	\$20.01	\$25.99

## StudSensor™ Pro SL



PART #	DESCRIPTION	DIST. NET	MSRP
ZIR62262	EDGE FINDING, LED, SPOTLITE, DEEP SCAN	\$24.39	\$29.99

## StudSensor™ Pro SL-AC



PART #	DESCRIPTION	DIST. NET	MSRP
ZIR62260	EDGE FINDING, LED, SPOTLITE, DEEP SCAN, WIRE WARNING	\$28.99	\$37.99

## StudSensor™ Pro LCD



PART #	DESCRIPTION	DIST. NET	MSRP
ZIR62258	EDGE FINDING, LCD, SPOTLITE, DEEP SCAN, WIRE WARNING	\$34.68	\$45.99

## StudSensor™ Edge



PART #	DESCRIPTION	DIST. NET	MSRP
ZIR63404	EDGE FINDING, LED	\$20.01	\$25.99

## StudSensor™ E-series



PART #	DESCRIPTION	DIST. NET	MSRP
ZIR63825	E30-EDGE FINDING, LED, SPOTLITE, WIRE WARNING	\$25.06	\$32.99
ZIR63811	E40-EDGE FINDING, LED, SPOTLITE, WIRE WARNING, DEEP SCAN	\$35.30	\$45.99
ZIR63813	E50 EDGE FINDING, LCD, SPOTLITE, WIRE WARNING, DEEP SCAN	\$37.09	\$47.99

## StudSensor™ i65 OneStep®



PART #	DESCRIPTION	DIST. NET	MSRP
ZIR62254	CENTRE FINDING, LCD, SPOTLITE, WIRE WARNING, DEEP SCAN	\$53.75	\$69.99

### MultiScanner® i520 OneStep®



PART #	DESCRIPTION	DIST. NET	MSRP
ZIR62244	CENTRE FINDING, LCD , SPOTLITE, METAL/AC SCAN, DEEP SCAN	\$86.64	\$116.99

### MultiScanner® x85 OneStep®



PART #	DESCRIPTION	DIST. NET	MSRP
ZIR65180	CENTRE FINDING, LCD , METAL/AC/WATER SCAN, DEEP SCAN	\$176.00	\$229.99

### MetalliScanner® m60C



PART #	DESCRIPTION	DIST. NET	MSRP
ZIR70088	METAL SCAN- NON- FERROUS <1.5", FERROUS <3", WIRE WARNING, AC, LCD	\$86.64	\$116.99

### ElectriScanner® e60c



PART #	DESCRIPTION	DIST. NET	MSRP
ZIR70083	AC SCAN, NON-FERROUS <1.5", FERROUS <3", WIRE WARNING, METAL, LCD	\$86.64	\$116.99

### MetalliScanner® MT7



PART #	DESCRIPTION	DIST. NET	MSRP
ZIR68996	DEEP SCAN, 1/2" DIA. FERROUS/NON-FERROUS METAL <6" DEEP, LCD	\$251.01	\$324.99

### MetalliScanner® m40



PART #	DESCRIPTION	DIST. NET	MSRP
ZIR62518	METAL SCAN <4" DEPTH	\$59.55	\$79.99

### MetalliScanner® MTX



PART #	DESCRIPTION	DIST. NET	MSRP
ZIR70092	REBAR <4" DEPTH, LCD, BATTERY/SIGNAL STRENGTH	\$352.43	\$449.99

### Breaker ID



PART #	DESCRIPTION	DIST. NET	MSRP
ZIR70079	120V, LIGHT, AUDIBLE	\$63.53	\$79.99

**Breaker ID Pro Kit - 300**



PART #	DESCRIPTION	DIST. NET	MSRP
ZIR70220	300V, LED, AUDIBLE, KIT, CASE	\$264.23	\$349.99

**Breaker ID Pro Kit - 600**



PART #	DESCRIPTION	DIST. NET	MSRP
ZIR70241	600V, LED, AUDIBLE, KIT, CASE	\$484.18	\$619.99

**ExitPoint™ XL300**



PART #	DESCRIPTION	DIST. NET	MSRP
ZIR67820	NON-MAGNETIC MATERIALS <12" DEPTH	\$169.93	\$229.99

**WaterLevel 25**



PART #	DESCRIPTION	DIST. NET	MSRP
ZIR58829	25' HOSE, 95DB SIGNAL	\$56.78	\$79.99

**Leak Alert Water Detection**



PART #	DESCRIPTION	DIST. NET	MSRP
ZIR58217	95 DB, FLOATS, LOW BATTERY INDICATOR	\$23.00	\$34.99
ZIR60819	BULK - NON-RETAIL PKG.	\$21.84	\$29.99

**Leak Alert - WIFI**



PART #	DESCRIPTION	DIST. NET	MSRP
ZIR70490	105 DB, LOW BATTERY INDICATOR, WIFI, EMAIL ALERTS	\$100.40	\$129.99

**Pro Series Top Grain  
Leather/Polyester Electrician's Rig**



PART #	DESCRIPTION	DIST. NET	MSRP
MECMT14461	SMALL 30-38"	\$183.33	\$249.99
MECMT14462	MEDIUM 33-41"	\$183.33	\$249.99
MECMT14463	LARGE 37-45"	\$183.33	\$249.99
MECMT14464	XL 41-49"	\$183.33	\$249.99
MECMT14465	XXL 45-53"	\$183.33	\$249.99

**Pro Series Top Grain  
Leather/Polyester Framer's Rig**



PART #	DESCRIPTION	DIST. NET	MSRP
MECMT14466	SMALL 30-38"	\$186.00	\$249.99
MECMT14467	MEDIUM 33-41"	\$186.00	\$249.99
MECMT14468	LARGE 37-45"	\$186.00	\$249.99
MECMT14469	XL 41-49"	\$186.00	\$249.99
MECMT14470	XXL 45-53"	\$186.00	\$249.99

**Pro Series Top Grain  
Saddle Leather/Polyester**



PART #	DESCRIPTION	DIST. NET	MSRP
MECMT14453	TOOL BAG	\$71.49	\$109.99

**Pro Series Top Grain Saddle Leather**



PART #	DESCRIPTION	DIST. NET	MSRP
MECMT14454	PLIER/HAMMER HOLDER	\$19.49	\$29.99

**Pro Series Top Grain  
Saddle Leather Electricians Tool Bag**



PART #	DESCRIPTION	DIST. NET	MSRP
MECMT14452	25 POCKETS	\$71.49	\$109.99

**Pro Series Top Grain  
Saddle Leather/Polyester**



PART #	DESCRIPTION	DIST. NET	MSRP
MECMT14451	FASTENER BAG	\$71.49	\$109.99

**Pro Series Top Grain Saddle Leather**



PART #	DESCRIPTION	DIST. NET	MSRP
MECMT14450	TAPE/KNIFE HOLDER	\$19.49	\$29.99

**Pro Series Top Grain  
Saddle Wax Leather Belt**



PART #	DESCRIPTION	DIST. NET	MSRP
MECMT14455	3" WIDE, SMALL 30-38"	\$39.00	\$59.99
MECMT14456	3" WIDE, MEDIUM 33-41"	\$39.00	\$59.99
MECMT14457	3" WIDE, LARGE 37-45"	\$39.00	\$59.99
MECMT14458	3" WIDE, XL 41-49"	\$39.00	\$59.99
MECMT14459	3" WIDE, XXL 45-53"	\$39.00	\$59.99

**Carpenter's Apron  
Split Grain 2 Hammer Holders**



PART #	DESCRIPTION	DIST. NET	MSRP
MECMT14401	5 PKT, 38-47"	\$19.22	\$29.99

**Carpenter's Apron  
Split Grain 2 Hammer Holders**



PART #	DESCRIPTION	DIST. NET	MSRP
MECMT14413	5 PKT, 34-51"	\$22.10	\$39.99

**Carpenter's Apron Split Grain**



PART #	DESCRIPTION	DIST. NET	MSRP
MECMT14431	11 PKT, COMBO	\$31.14	\$49.99

**Top Grain, Oil Tanned  
Leather Carpenter's Apron**



PART #	DESCRIPTION	DIST. NET	MSRP
MECMT14407	11 PKT, HAMMER RING, 36-51"	\$55.66	\$89.99

**Top Grain, Oil Tanned  
Leather Carpenter's Apron**



PART #	DESCRIPTION	DIST. NET	MSRP
MECMT14423	12 PKT, 2 HAMMER HOLDERS, PENCIL PKT, 36-54"	\$59.52	\$99.99

**Carpenter's Apron  
Split Grain 2 Hammer Holders**



PART #	DESCRIPTION	DIST. NET	MSRP
MECMT14402	11 PKT, 34-51"	\$24.59	\$39.99

**Carpenter's Apron Split Grain**



PART #	DESCRIPTION	DIST. NET	MSRP
MECMT14436	11 PKT	\$34.82	\$59.99

**Leather Apron**



PART #	DESCRIPTION	DIST. NET	MSRP
MECMT14443	WAIST TO KNEE APRON	\$21.80	\$39.99

**Top Grain, Oil Tanned  
Leather Carpenter's Apron**



PART #	DESCRIPTION	DIST. NET	MSRP
MECMT14417	12 PKT, 2 HAMMER/TAPE MEASURE HOLDER, PENCIL PKT, 36-54"	\$55.66	\$99.99

**Top Grain, Oil Tanned Leather  
Carpenter's Apron**



PART #	DESCRIPTION	DIST. NET	MSRP
MECMT14449	12 PKT, 2 HAMMER HOLDERS, PENCIL PKT, 39-52"	\$119.33	\$179.99

## Oil Tanned Leather Carpenter's Apron



PART #	DESCRIPTION	DIST. NET	MSRP
MECMT14430	SM/MED/LG PKT, TAPE MEASURE HOLDER, 34-50"	\$116.05	\$199.99

## Nail - Tool Drywall Pouch



PART #	DESCRIPTION	DIST. NET	MSRP
MECMT14412	3 PKT	\$18.41	\$29.99

## Nail/Fastener Pouch w/ Hammer Holder



PART #	DESCRIPTION	DIST. NET	MSRP
MECMT14432	5 PKT	\$18.61	\$29.99

## Top Grain Nail Tool Pouch



PART #	DESCRIPTION	DIST. NET	MSRP
MECMT14425	5 PKT	\$21.52	\$39.99

## Top Grain Nail Tool Bag



PART #	DESCRIPTION	DIST. NET	MSRP
MECMT14441	DRILL HOLSTER, 2 PKT, REVERSABLE	\$25.02	\$39.99

## PVC Tool Roll



PART #	DESCRIPTION	DIST. NET	MSRP
MECMT14448	14 PKT	\$14.09	\$24.99

## Split Grain Nail/Tool Bag



PART #	DESCRIPTION	DIST. NET	MSRP
MECMT14414	5 PKT	\$16.00	\$29.99

## Split Grain Nail-Tool Drywall Pouch



PART #	DESCRIPTION	DIST. NET	MSRP
MECMT14400	4 PKT	\$20.23	\$34.99

## Top Grain Nail Tool Bag



PART #	DESCRIPTION	DIST. NET	MSRP
MECMT14437	TOOL POUCH FOR LEFT HANDERS, 5PKT	\$21.52	\$39.99

## Top Grain Nail Tool Bag



PART #	DESCRIPTION	DIST. NET	MSRP
MECMT14445	MAINTENANCE TOOL POUCH, 6 PKT	\$29.85	\$49.99

### Top Grain Nail Tool Bag



PART #	DESCRIPTION	DIST. NET	MSRP
MECMT14424	DRYWALL TOOL POUCH, 7 PKT	\$36.58	\$59.99

### Hammer Holder



PART #	DESCRIPTION	DIST. NET	MSRP
MECMT14406	HAMMER RING FOR 2" BELT	\$5.93	\$9.99
MECMT14409	SWIVELING HAMMER RING FOR 2" BELT	\$5.81	\$9.99

### Premium Leather Belt



PART #	DESCRIPTION	DIST. NET	MSRP
MECMT14427	BLACK, 30-47"	\$14.64	\$29.99

### Saddle Leather Belt



PART #	DESCRIPTION	DIST. NET	MSRP
MECMT14446	DBL BUCKLE, TAN, 29-45"	\$17.32	\$29.99

### Nail/Tool Bag



PART #	DESCRIPTION	DIST. NET	MSRP
MECMT14444	600 DENIER, 18" TOOL BAG, 32 PKT	\$30.79	\$59.99

### Oil Tanned Leather Nail/Tool Bag



PART #	DESCRIPTION	DIST. NET	MSRP
MECMT14428	ELECTRICIAN POUCH, 10 PKT	\$35.17	\$59.99

### Premium Leather Belt



PART #	DESCRIPTION	DIST. NET	MSRP
MECMT14410	TAN, 30-47"	\$14.64	\$29.99

### Premium Leather Belt



PART #	DESCRIPTION	DIST. NET	MSRP
MECMT14433	BLACK, 36-54"	\$16.86	\$29.99

### Oil Tanned Leather Belt



PART #	DESCRIPTION	DIST. NET	MSRP
MECMT14447	DBL BUCKLE, BROWN, 29-45"	\$17.63	\$29.99

### Utility Bolt Bucket



PART #	DESCRIPTION	DIST. NET	MSRP
MECMT14419	CANVAS 12X17" UTILITY BOLT BUCKET	\$49.15	\$99.99

## Accessory Holder



PART #	DESCRIPTION	DIST. NET	MSRP
MECMT14415	KNIFE/PENCIL HOLDER	\$6.19	\$9.99

## Accessory Holder



PART #	DESCRIPTION	DIST. NET	MSRP
MECMT14411	KNIFE HOLDER WITH HAMMER HOLDER	\$7.50	\$14.99

## Suspenders



PART #	DESCRIPTION	DIST. NET	MSRP
MECMT14426	NON-ELASTIC SUSPENDERS	\$10.81	\$19.99

## Knee Pads



PART #	DESCRIPTION	DIST. NET	MSRP
MECMT14440	LEATHER KNEE PADS	\$36.73	\$59.99

## Bench Vise Cast Body, Forged Serated Jaws



PART #	DESCRIPTION	DIST. NET	MSRP
MECMT13960	FIXED BASE-3"	\$40.71	\$79.99
MECMT13961	FIXED BASE-4"	\$46.67	\$89.99
MECMT13962	FIXED BASE-5"	\$53.66	\$99.99
MECMT13963	FIXED BASE-6"	\$60.18	\$119.99

## Accessory Holder



PART #	DESCRIPTION	DIST. NET	MSRP
MECMT14408	KNIFE/PENCIL HOLDER, 3 PKT	\$7.13	\$14.99

## Accessory Holder



PART #	DESCRIPTION	DIST. NET	MSRP
MECMT14438	KNIFE/TOOL/PENCIL/PLIER HOLDER	\$26.38	\$49.99

## Suspenders



PART #	DESCRIPTION	DIST. NET	MSRP
MECMT14442	LEATHER SUSPENDERS	\$37.45	\$59.99

## Leather Shop Apron



PART #	DESCRIPTION	DIST. NET	MSRP
MECMT14429	6 PKT, D-RINGS	\$48.53	\$79.99

## Bench Vise Cast Body, Forged Serated Jaws



PART #	DESCRIPTION	DIST. NET	MSRP
MECMT13966	SWIVEL BASE-3"	\$45.90	\$89.99
MECMT13967	SWIVEL BASE-4"	\$51.83	\$99.99
MECMT13968	SWIVEL BASE-5"	\$58.88	\$119.99
MECMT13969	SWIVEL BASE-6"	\$66.23	\$129.99

## Ball-Hex-L Key Set



PART #	DESCRIPTION	DIST. NET	MSRP
EKL 13207	7PC 5/64"-1/4" SHORT	\$10.02	\$15.91
EKL 13607	7PC 1.5MM-6MM	\$9.53	\$15.13
EKL 13211	11PC .050"-1/4"	\$13.50	\$21.42
EKL 13213	13PC .050"-3/8"	\$20.83	\$33.07
EKL 13222	COMBO PACK, 13213 & 13609	\$38.19	\$60.62

## Hex-L Key Set



PART #	DESCRIPTION	DIST. NET	MSRP
EKL 10107	7PC 5/64"-1/4" SHORT	\$3.05	\$4.84
EKL 10507	7PC 1.5MM-6MM SHORT	\$5.52	\$8.76
EKL 10609	9PC 1.5MM-10MM LONG	\$10.95	\$17.38
EKL 10111	11PC .050"-1/4" SHORT	\$5.00	\$7.93
EKL 10213	13PC .050"-3/8" LONG	\$11.40	\$18.09
EKL 10018	18PC 5/16"-1/4" SHORT & LONG	\$7.53	\$11.96
EKL 10222	22PC COMBO 10213 & 10609	\$22.34	\$35.47

## Ergo-Fold Cushion Grip Key Set



PART #	DESCRIPTION	DIST. NET	MSRP
EKL 25611	6PC 5/32"-3/8"	\$11.73	\$18.62
EKL 25161	6PC 3MM-10MM	\$11.73	\$18.62
EKL 25171	7PC 1.5MM-6MM	\$7.08	\$11.24
EKL 25581	8PC T8-T40 TORX®	\$15.34	\$24.36
EKL 25911	9PC 5/64"-1/4"	\$8.25	\$13.09
EKL 25912	9PC .050"-3/16"	\$7.08	\$11.24
EKL 25919	9PC 5/64"-1/4" BALL	\$12.94	\$20.53
EKL 25024	3 PACK-25911,25171,25581	\$30.56	\$48.51

## Fold-Up Set



PART #	DESCRIPTION	DIST. NET	MSRP
EKL 20511	#51 3/16"-3/8"	\$9.41	\$14.93
EKL 20811	#81 .050"-5/32"	\$4.34	\$6.89
EKL 20911	#91 5/64"-1/4"	\$6.66	\$10.58
EKL 20912	#91S .050"-3/16"	\$5.26	\$8.36
EKL 21171	#M17 1.5MM-6MM	\$5.47	\$8.69
EKL 22571	T10-T40 TORX®	\$12.95	\$20.56

## Double-Ball Hex Key Set Double Ball



PART #	DESCRIPTION	DIST. NET	MSRP
EKL 17609	9PC METRIC LONG	\$28.11	\$44.62
EKL 17213	13PC SAE LONG	\$32.79	\$52.04
EKL 17222	22PC COMBO SAE & METRIC	\$60.80	\$96.51

## Cush Grip Hex T-Key Set in Stand - 9"



PART #	DESCRIPTION	DIST. NET	MSRP
EKL 56198	8 PC METRIC W/POUCH 9"	\$46.76	\$74.22

### Cush Grip Hex T-Key Set 6"



PART #	DESCRIPTION	DIST. NET	MSRP
EKL 53168	8PC SAE W/POUCH 6"	\$24.67	\$39.16
EKL 55166	6PC METRIC W/POUCH 6"	\$20.58	\$32.67

### Cush Grip Hex T-Key Set 9"



PART #	DESCRIPTION	DIST. NET	MSRP
EKL 53198	8PC SAE W/POUCH 9"	\$27.10	\$43.02

### Cush Grip Hex T-Key 6" Arm



PART #	DESCRIPTION	DIST. NET	MSRP
EKL 51606	3/32" - 6"	\$2.28	\$3.62
EKL 51607	7/64" - 6"	\$2.32	\$3.69
EKL 51608	1/8" - 6"	\$2.32	\$3.69
EKL 51609	9/64" - 6"	\$2.52	\$4.00
EKL 51610	5/32" - 6"	\$2.63	\$4.18
EKL 51612	3/16" - 6"	\$3.05	\$4.84
EKL 51614	7/32" - 6"	\$3.82	\$6.07
EKL 51616	1/4" - 6"	\$4.40	\$6.98
EKL 51620	5/16" - 6"	\$7.41	\$11.76
EKL 51624	3/8" - 6"	\$9.25	\$14.69
EKL 54620	2MM - 6"	\$2.65	\$4.20
EKL 54625	2.5MM - 6"	\$2.65	\$4.20
EKL 54630	3MM - 6"	\$2.65	\$4.20
EKL 54640	4MM - 6"	\$3.02	\$4.80
EKL 54650	5MM - 6"	\$3.72	\$5.91
EKL 54660	6MM - 6"	\$4.40	\$6.98
EKL 54680	8MM - 6"	\$7.53	\$11.96
EKL 54690	10MM - 6"	\$9.58	\$15.20

### Cush Grip Hex T-Key 9" Arm



PART #	DESCRIPTION	DIST. NET	MSRP
EKL 51905	5/64" - 9"	\$2.42	\$3.84
EKL 51906	3/32" - 9"	\$2.42	\$3.84
EKL 51907	7/64" - 9"	\$2.46	\$3.91
EKL 51908	1/8" - 9"	\$2.46	\$3.91
EKL 51909	9/64" - 9"	\$2.74	\$4.36
EKL 51910	5/32" - 9"	\$2.94	\$4.67
EKL 51912	3/16" - 9"	\$3.44	\$5.47
EKL 51914	7/32" - 9"	\$4.34	\$6.89
EKL 51916	1/4" - 9"	\$5.08	\$8.07
EKL 51920	5/16" - 9"	\$8.20	\$13.02
EKL 51924	3/8" - 9"	\$10.37	\$16.47
EKL 51928	7/16" - 9"	\$16.48	\$26.16
EKL 51932	1/2" - 9"	\$22.37	\$35.51
EKL 54920	2MM - 9"	\$2.83	\$4.49
EKL 54925	2.5MM - 9"	\$2.87	\$4.56
EKL 54930	3MM - 9"	\$2.94	\$4.67
EKL 54940	4MM - 9"	\$3.33	\$5.29
EKL 54950	5MM - 9"	\$4.07	\$6.47
EKL 54960	6MM - 9"	\$4.84	\$7.69
EKL 54980	8MM - 9"	\$8.34	\$13.24
EKL 54990	10MM - 9"	\$10.67	\$16.93
EKL 54991	11MM - 9"	\$17.07	\$27.09
EKL 54992	12MM - 9"	\$23.58	\$37.42

### Display-Cushion Grip T-Key - 6"



PART #	DESCRIPTION	DIST. NET	MSRP
EKL 42446	INCLUDES: 51606(5)-51607(5)-51608(5)-51609(5)-51610(5)-51612(5)-51614(5)-51616(5)-51620(2)-51624(2)	\$150.08	\$238.22

### Display-Cushion Grip T-Key - 9"



PART #	DESCRIPTION	DIST. NET	MSRP
EKL 42449	INCLUDES: 51906(5)-51907(5)-51908(5)-51909(5)-51910(5)-51912(5)-51914(5)-51916(5)-51920(2)-51924(2)	\$166.66	\$264.53

## Display-Fold Cushion Grip Planogram



PART #	DESCRIPTION	DIST. NET	MSRP
EKL 42190	INCLUDES: 20511(2)-20811(4)-20911(4)-20912(2)-21171(2)-22571(2)-53168(2)-55166(1)	\$180.12	\$285.91

## Display-Ergo Planogram



PART #	DESCRIPTION	DIST. NET	MSRP
EKL 45140	INCLUDES: 25161(2)-25171(2)-25581(2)-25611(2)-25911(2)-25912(2)-25919(2)	\$148.32	\$235.42

## Display-Ball Hex-L-Handle Planogram



PART #	DESCRIPTION	DIST. NET	MSRP
EKL 42100	INCLUDES: 13207(2)-13211(2)-13213(2)-13607(2)-13609(2)	\$142.49	\$226.18

## Display-Hex L-Handle Planogram



PART #	DESCRIPTION	DIST. NET	MSRP
EKL 42243	INCLUDES: 10018(4)-10107(6)-10111(6)-10213(4)-10507(2)-10609(2)	\$156.94	\$249.11

### StrykerPro Hammer Unbreakable Rubber Handle



PART #	DESCRIPTION	DIST. NET	MSRP
ABC PRO2414BP	1.5 LB-14" STEEL REINFORCED HANDLE	\$56.56	\$88.19
ABC PRO3214BP	2 LB-14" STEEL REINFORCED HANDLE	\$60.29	\$93.44
ABC PRO4014BP	2.5 LB-14" STEEL REINFORCED HANDLE	\$72.43	\$104.99

### StrykerPro Hammer Unbreakable Rubber Handle



PART #	DESCRIPTION	DIST. NET	MSRP
ABC PRO212S	2.5 LB-12" STEEL REINFORCED HANDLE	\$60.40	\$93.44
ABC PRO412S	4 LB-12" STEEL REINFORCED HANDLE	\$64.76	\$99.74
ABC PRO416S	4 LB-16" STEEL REINFORCED HANDLE	\$79.46	\$121.79
ABC PRO616S	6 LB-16" STEEL REINFORCED HANDLE	\$95.33	\$149.09

### StrykerXHD Hammer Unbreakable Poly Handle



PART #	DESCRIPTION	DIST. NET	MSRP
ABC XHD212S	2.5 LB-12" STEEL REINFORCED HANDLE	\$41.43	\$66.14
ABC XHD412S	4 LB-12" STEEL REINFORCED HANDLE	\$46.86	\$71.39
ABC XHD624S	6 LB-24" STEEL REINFORCED HANDLE	\$70.40	\$110.24
ABC XHD630S	6 LB-30" STEEL REINFORCED HANDLE	\$78.60	\$121.79
ABC XHD824S	8 LB-24" STEEL REINFORCED HANDLE	\$77.01	\$115.49
ABC XHD830S	8 LB-30" STEEL REINFORCED HANDLE	\$86.38	\$132.29
ABC XHD1030S	10 LB-30" STEEL REINFORCED HANDLE	\$96.61	\$149.09
ABC XHD1230S	12 LB-30" STEEL REINFORCED HANDLE	\$105.87	\$165.89
ABC XHD1430S	14 LB-30" STEEL REINFORCED HANDLE	\$122.17	\$187.94

### Brass Hammer - Fiberglass Handle



PART #	DESCRIPTION	DIST. NET	MSRP
ABC 6BF	6 LB 33" HANDLE	\$232.48	\$358.04
ABC 8BF	8 LB 33" HANDLE	\$268.39	\$413.69
ABC 10BF	10 LB 33" HANDLE	\$326.54	\$501.89
ABC 12BF	12 LB 33" HANDLE	\$426.13	\$656.24
ABC 14BF	14 LB 33" HANDLE	\$488.60	\$749.69
ABC 20BF	20 LB 33" HANDLE	\$618.67	\$954.44

### StrykerPro Hammer Unbreakable Rubber Handle



PART #	DESCRIPTION	DIST. NET	MSRP
ABC PRO2516CP	2.5 LB-16" STEEL REINFORCED HANDLE	\$66.36	\$104.99
ABC PRO3516CP	3.5 LB-16" STEEL REINFORCED HANDLE	\$72.86	\$110.24

### StrykerPro Hammer Unbreakable Rubber Handle



PART #	DESCRIPTION	DIST. NET	MSRP
ABC PRO624S	6 LB-24" STEEL REINFORCED HANDLE	\$105.77	\$165.89
ABC PRO630S	6 LB-30" STEEL REINFORCED HANDLE	\$119.19	\$181.64
ABC PRO824S	8 LB-24" STEEL REINFORCED HANDLE	\$116.53	\$176.39
ABC PRO830S	8 LB-30" STEEL REINFORCED HANDLE	\$131.54	\$203.69
ABC PRO836S	8 LB-36" STEEL REINFORCED HANDLE	\$156.79	\$242.54
ABC PRO1030S	10 LB-30" STEEL REINFORCED HANDLE	\$151.15	\$232.04
ABC PRO1036S	10 LB-36" STEEL REINFORCED HANDLE	\$169.58	\$259.34
ABC PRO1230S	12 LB-30" STEEL REINFORCED HANDLE	\$157.75	\$242.54
ABC PRO1236S	12 LB-36" STEEL REINFORCED HANDLE	\$188.32	\$291.89
ABC PRO1430S	14 LB-30" STEEL REINFORCED HANDLE	\$171.07	\$264.59
ABC PRO1436S	14 LB-36" STEEL REINFORCED HANDLE	\$201.53	\$308.69

### Deadblow Hammer Polyurethane One-Piece Hot Cast



PART #	DESCRIPTION	DIST. NET	MSRP
ABC S1DB	18 OZ-10-1/2" HANDLE	\$42.71	\$66.14
ABC 1DB	21 OZ-11-1/4" HANDLE	\$45.27	\$71.39
ABC 2DB	26 OZ 12-3/4" HANDLE	\$49.84	\$77.69
ABC 3DB	45 OZ 14-3/8" HANDLE	\$64.87	\$99.74
ABC 4DB	53 OZ 15-1/4" HANDLE	\$90.54	\$137.54
ABC 7DB	5.5 LB 20" HANDLE	\$123.98	\$193.19
ABC 9DB	9.0 LB 20" HANDLE	\$204.30	\$313.94
ABC 10DB	9.0 LB 30" HANDLE	\$172.23	\$264.59
ABC 12DB	10.5 LB 30" HANDLE	\$235.92	\$364.34
ABC 14DB	12 LB 36" HANDLE	\$267.89	\$413.69

### Brass Hammer - Wood Handle



PART #	DESCRIPTION	DIST. NET	MSRP
ABC 1BW	1 LB 10" HANDLE	\$50.60	\$77.69
ABC 15BW	1.5 LB 12.5" HANDLE	\$69.21	\$104.99
ABC 2BW	2 LB 12.5" HANDLE	\$77.96	\$121.79
ABC 3BW	3 LB 12.5" HANDLE	\$96.17	\$149.09
ABC 4BW	4 LB 15" HANDLE	\$119.50	\$181.64
ABC 5BW	5 LB 15" HANDLE	\$141.24	\$215.24
ABC 6BWS	6 LB 24" HANDLE	\$186.30	\$286.64
ABC 6BW	6 LB 32" HANDLE	\$191.03	\$291.89
ABC 8BWS	8 LB 24" HANDLE	\$237.41	\$364.34
ABC 8BW	8 LB 32" HANDLE	\$242.43	\$374.84
ABC 10BWS	10 LB 24" HANDLE	\$275.63	\$425.24
ABC 10BW	10 LB 32" HANDLE	\$284.58	\$435.74
ABC 12BW	12 LB 32" HANDLE	\$377.23	\$579.59
ABC 14BW	14 LB 32" HANDLE	\$428.55	\$661.49
ABC 20BW	20 LB 32" HANDLE	\$570.69	\$876.74

### Brass Hammer - Fiberglass Handle



PART #	DESCRIPTION	DIST. NET	MSRP
ABC 2BFS	2 LB 8" HANDLE	\$99.59	\$154.34
ABC 3BFS	3 LB 8" HANDLE	\$122.92	\$187.94
ABC 4BFS	4 LB 8" HANDLE	\$152.40	\$237.29
ABC 5BFS	5 LB 8" HANDLE	\$170.11	\$259.34
ABC 3BF	3 LB 14" HANDLE	\$128.77	\$198.44
ABC 4BF	4 LB 14" HANDLE	\$157.33	\$242.54
ABC 5BF	5 LB 14" HANDLE	\$174.04	\$269.84

### Bronze/Copper - Fiberglass Handle



PART #	DESCRIPTION	DIST. NET	MSRP
ABC 1BZFB	1 LB 10" HANDLE	\$76.56	\$115.49
ABC 15BZFB	1.5 LB 10" HANDLE	\$96.37	\$149.09
ABC 2BZFS	2 LB 8" HANDLE	\$109.55	\$171.14
ABC 2BZFB	2 LB 12" HANDLE	\$121.32	\$187.94
ABC 3BZFB	3 LB 12" HANDLE	\$147.88	\$225.74
ABC 3BZFS	3 LB 8" HANDLE	\$135.20	\$209.99
ABC 3BZFB	3 LB 14" HANDLE	\$141.65	\$220.49
ABC 4BZFS	4 LB 8" HANDLE	\$167.59	\$259.34
ABC 4BZFB	4 LB 12" HANDLE	\$178.15	\$276.14
ABC 4BZFB	4 LB 14" HANDLE	\$173.03	\$264.59
ABC 5BZFS	5 LB 8" HANDLE	\$187.11	\$286.64
ABC 5BZFB	5 LB 12" HANDLE	\$197.67	\$303.44
ABC 5BZFB	5 LB 14" HANDLE	\$191.44	\$291.89
ABC 6BZFB	6 LB 16" HANDLE	\$232.38	\$358.04
ABC 6BZFB	6 LB 24" HANDLE	\$246.76	\$380.09
ABC 8BZFB	8 LB 24" HANDLE	\$282.68	\$435.74
ABC 10BZFB	10 LB 24" HANDLE	\$343.63	\$529.19
ABC 6BZFB	6 LB 33" HANDLE	\$255.72	\$391.64

### Brass Hammer - Fiberglass Handle



PART #	DESCRIPTION	DIST. NET	MSRP
ABC 1BFB	1 LB 10" HANDLE	\$69.60	\$104.99
ABC 15BFB	1.5 LB 10" HANDLE	\$87.61	\$132.29
ABC 2BFB	2 LB 12" HANDLE	\$110.25	\$171.14
ABC 3BFB	3 LB 12" HANDLE	\$134.51	\$209.99
ABC 4BFB	4 LB 12" HANDLE	\$161.96	\$247.79
ABC 5BFB	5 LB 12" HANDLE	\$179.66	\$276.14
ABC 6BFB	6 LB 16" HANDLE	\$211.16	\$325.49
ABC 6BFB	6 LB 24" HANDLE	\$224.32	\$347.54
ABC 8BFB	8 LB 24" HANDLE	\$257.03	\$396.89
ABC 10BFB	10 LB 24" HANDLE	\$312.35	\$479.84

### Bronze/Copper - Wood Handle



PART #	DESCRIPTION	DIST. NET	MSRP
ABC 1BZW	1 LB 10" HANDLE	\$55.63	\$88.19
ABC 15BZW	1.5 LB 12.5 HANDLE	\$76.16	\$115.49
ABC 2BZW	2 LB 12.5" HANDLE	\$85.81	\$132.29
ABC 3BZW	3 LB 12.5" HANDLE	\$105.83	\$165.89
ABC 4BZW	4 LB 15" HANDLE	\$131.48	\$203.69
ABC 5BZW	5 LB 15" HANDLE	\$155.32	\$237.29
ABC 6BZWS	6 LB 24" HANDLE	\$204.92	\$313.94
ABC 6BZW	6 LB 32" HANDLE	\$210.15	\$325.49
ABC 8BZWS	8 LB 24" HANDLE	\$261.15	\$402.14
ABC 8BZW	8 LB 32" HANDLE	\$266.68	\$408.44
ABC 10BZWS	10 LB 24" HANDLE	\$303.20	\$469.34
ABC 10BZW	10 LB 32" HANDLE	\$313.06	\$479.84
ABC 12BZW	12 LB 32" HANDLE	\$414.96	\$639.44
ABC 14BZW	14 LB 32" HANDLE	\$471.40	\$722.39
ABC 20BZW	20 LB 32" HANDLE	\$627.72	\$964.94

### Bronze/Copper - Fiberglass Handle



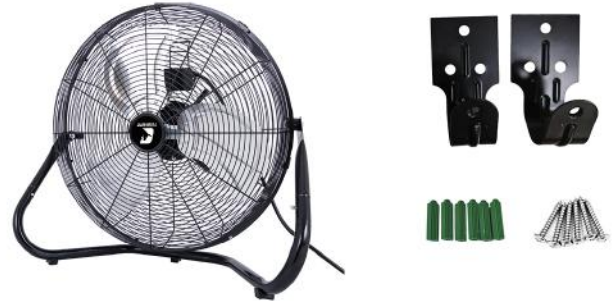
PART #	DESCRIPTION	DIST. NET	MSRP
ABC 8BZF	8 LB 33" HANDLE	\$295.25	\$452.54
ABC 10BZF	10 LB 33" HANDLE	\$359.23	\$551.24
ABC 12BZF	12 LB 33" HANDLE	\$468.68	\$722.39
ABC 14BZF	14 LB 33" HANDLE	\$537.48	\$827.39
ABC 20BZF	20 LB 33" HANDLE	\$680.54	\$1,047.89

### 900 CFM Air Mover



PART #	DESCRIPTION	DIST. NET	MSRP
DUR AM1090	900 CFM AIR MOVER	\$78.88	\$119.99

### 20" Commercial Floor Fan



PART #	DESCRIPTION	DIST. NET	MSRP
DUR FGD20	20" COMMERCIAL FLOOR FAN W/ WALL CEILING MOUNT - 5,800 CFM	\$72.63	\$99.99

### 30" Commercial Pedestal Fan



PART #	DESCRIPTION	DIST. NET	MSRP
DUR FP30A	30" COMMERCIAL PEDESTAL FAN - 7,500 CFM	\$167.21	\$269.99

### 36" Commercial Drum Fan



PART #	DESCRIPTION	DIST. NET	MSRP
DUR FGD36T	36" COMMERCIAL DRUM FAN - 11,500 CFM	\$270.18	\$379.99

### 42" Commercial Drum Fan



PART #	DESCRIPTION	DIST. NET	MSRP
DUR DF42	42" COMMERCIAL DRUM FAN W/ WHEELS - 20,500 CFM	\$411.25	\$599.99

## "C" SERIES SINGLE ACTING / SPRING RETURN CYLINDERS



RUGGED, HIGH QUALITY SINGLE ACTING CYLINDERS  
USED FOR LIFTING AND PRESSING.

5 - 100 TON / 1" - 16" STROKE LENGTHS

PART #	WEIGHT CAP.	STROKE	USEABLE OIL CAP. (CU.IN.)	RETRACTED HEIGHT (IN.)	EXTENDED HEIGHT (IN.)	DIST. NET	MSRP
PWTC51C	5 TON	1"	1.10	4.34	5.44	\$615.83	\$769.79
PWTC53C	5 TON	3-1/4"	3.20	6.50	9.75	\$639.88	\$799.85
PWTC55C	5 TON	5-1/4"	5.20	8.50	13.75	\$658.35	\$822.94
PWTC57C	5 TON	7-1/4"	7.20	10.75	18.00	\$836.50	\$1,045.62
PWTC59C	5 TON	9-1/4"	9.20	12.75	22.00	\$988.89	\$1,236.11
PWTC101C	10 TON	1"	2.20	3.63	4.63	\$701.20	\$876.51
PWTC102C	10 TON	2-1/8"	4.80	4.75	6.88	\$721.15	\$901.44
PWTC104C	10 TON	4-1/8"	9.20	6.75	10.88	\$779.62	\$974.53
PWTC106C	10 TON	6-1/8"	13.70	9.75	15.88	\$872.17	\$1,090.22
PWTC108C	10 TON	8-1/8"	19.90	11.75	19.88	\$1,034.71	\$1,293.39
PWTC1010C	10 TON	10-1/8"	22.60	13.75	23.88	\$1,051.69	\$1,314.62
PWTC1012C	10 TON	12-1/8"	27.10	15.75	27.88	\$1,283.98	\$1,604.98
PWTC1014C	10 TON	14-1/8"	31.60	17.75	31.88	\$1,345.31	\$1,681.63
PWTC1016C	10 TON	16"	36.10	20.50	36.50	\$1,435.01	\$1,793.76
PWTC151C	15 TON	1"	3.10	4.88	5.88	\$856.45	\$1,070.56
PWTC152C	15 TON	2-1/8"	6.70	5.88	8.00	\$919.25	\$1,149.06
PWTC154C	15 TON	4-1/8"	12.90	7.88	12.00	\$1,047.36	\$1,309.20
PWTC156C	15 TON	6-1/8"	19.20	10.69	16.81	\$1,108.57	\$1,385.71
PWTC158C	15 TON	8-1/8"	25.50	12.69	20.81	\$1,282.28	\$1,602.84
PWTC1510C	15 TON	10-1/8"	31.80	14.69	24.81	\$1,560.16	\$1,950.20
PWTC1512C	15 TON	12-1/8"	38.10	16.69	28.81	\$1,886.48	\$2,358.10
PWTC1514C	15 TON	14-1/8"	44.40	18.69	32.81	\$2,061.67	\$2,577.09
PWTC1516C	15 TON	16"	50.30	20.56	36.56	\$2,165.16	\$2,706.46
PWTC251C	25 TON	1"	5.10	5.50	6.50	\$1,070.27	\$1,337.84
PWTC252C	25 TON	2"	10.30	6.50	8.50	\$1,138.55	\$1,423.18
PWTC254C	25 TON	4"	20.60	8.50	12.50	\$1,238.16	\$1,547.71
PWTC256C	25 TON	6-1/4"	32.20	10.75	17.00	\$1,422.13	\$1,777.66
PWTC258C	25 TON	8-1/4"	42.50	12.75	21.00	\$1,846.82	\$2,308.52
PWTC2510C	25 TON	10-1/4"	52.80	14.75	25.00	\$2,187.05	\$2,733.81
PWTC2512C	25 TON	12-1/4"	63.20	16.75	29.00	\$2,395.40	\$2,994.25
PWTC2514C	25 TON	14-1/4"	73.50	18.75	33.00	\$2,509.04	\$3,136.30
PWTC552C	55 TON	2"	22.10	6.88	8.88	\$2,159.92	\$2,699.90
PWTC554C	55 TON	4-1/4"	46.90	9.13	13.38	\$2,322.57	\$2,903.21
PWTC556C	55 TON	6-1/4"	69.00	11.13	17.38	\$2,429.26	\$3,036.57

## "RA" SERIES SINGLE ACTING / SPRING RETURN, ALUMINUM CYLINDERS



LIGHTWEIGHT, ALUMINUM DESIGN. EASY TO TRANSPORT.  
USED FOR LIFTING AND PRESSING.

20 - 100 TON / 2" - 10" STROKE LENGTHS

PART #	WEIGHT CAP.	STROKE	USEABLE OIL CAP. (CU.IN.)	RETRACTED HEIGHT (IN.)	EXTENDED HEIGHT (IN.)	DIST. NET	MSRP
PWTRA202	20 TON	2-1/8"	9.41	6.38	8.50	\$1,913.84	\$2,392.30
PWTRA204	20 TON	4-1/8"	18.27	8.38	12.50	\$2,010.95	\$2,513.69
PWTRA206	20 TON	6-1/8"	27.13	10.38	16.50	\$2,129.83	\$2,662.29
PWTRA302	30 TON	2"	13.79	7.38	9.50	\$2,391.28	\$2,989.10
PWTRA304	30 TON	4"	26.77	9.38	13.50	\$2,479.87	\$3,099.84
PWTRA306	30 TON	6"	39.75	11.38	17.50	\$2,638.17	\$3,297.71

PLEASE CALL US FOR A COMPLETE LIST OF SIZES AVAILABLE.

## "RH" SERIES SINGLE ACTING / SPRING RETURN, HOLLOW CYLINDERS



IDEAL FOR CABLE PULLING AND TENSIONING, ANCHOR BOLTS, FORCING SCREWS, ETC.

10 - 100 TON / 2" - 8" STROKE LENGTHS

PART #	WEIGHT CAPACITY	STROKE	USEABLE OIL CAP (CU.IN.)	RETRACTED HEIGHT (IN.)	EXTENDED HEIGHT (IN.)	DIST. NET	MSRP
PWTRH102	10 TON	2-1/2"	5.52	5.31	7.81	<b>\$1,597.20</b>	\$1,996.50
PWTRH108	10 TON	8"	17.68	11.31	19.31	<b>\$2,329.63</b>	\$2,912.03
PWTRH120	12 TON	5/16"	0.87	2.19	2.50	<b>\$1,024.57</b>	\$1,280.71
PWTRH121	12 TON	1-5/8"	4.49	4.81	6.44	<b>\$1,329.35</b>	\$1,661.69
PWTRH123	12 TON	3"	8.29	7.25	10.25	<b>\$1,577.37</b>	\$1,971.71
PWTRH202	20 TON	2"	9.45	6.13	8.13	<b>\$1,830.97</b>	\$2,288.72
PWTRH203	20 TON	3"	11.76	6.06	9.06	<b>\$1,913.04</b>	\$2,391.30
PWTRH206	20 TON	6"	28.35	12.13	18.13	<b>\$2,630.20</b>	\$3,287.75
PWTRH302	30 TON	2-1/2"	15.85	6.25	8.75	<b>\$2,450.57</b>	\$3,063.21
PWTRH303	30 TON	3"	17.60	7.06	10.06	<b>\$2,489.10</b>	\$3,111.37
PWTRH306	30 TON	6"	38.10	9.75	15.75	<b>\$3,250.03</b>	\$4,062.53

## "RLS" SERIES SINGLE ACTING / SPRING RETURN / LOW PROFILE CYLINDERS



IDEAL FOR LOW CLEARANCE OR TIGHT CONSTRAINT APPLICATIONS REQUIRING HIGH FORCES.

5 - 150 TON - 7/16" - 5/8" STROKE LENGTHS

PART #	WEIGHT CAPACITY	STROKE	USEABLE OIL CAP (CU.IN.)	RETRACTED HEIGHT (IN.)	EXTENDED HEIGHT (IN.)	DIST. NET	MSRP
PWTRLS50	5 TON	9/16"	0.62	1.63	2.19	<b>\$605.69</b>	\$757.11
PWTRLS100	10 TON	7/16"	1.00	1.75	2.19	<b>\$856.45</b>	\$1,070.56
PWTRLS200	20 TON	7/16"	2.00	2.00	2.44	<b>\$1,429.20</b>	\$1,786.49
PWTRLS300	30 TON	1/2"	3.20	2.31	2.81	<b>\$1,637.09</b>	\$2,046.37

## "RSS" SERIES SINGLE ACTING / SPRING RETURN / SHORTY CYLINDERS



IDEAL FOR CONFINED AREAS WITH 3-1/2" TO 11-7/16" CLEARANCE.

10 - 250 TON / 1-1/2" - 3" STROKE LENGTHS

PART #	WEIGHT CAPACITY	STROKE	USEABLE OIL CAP. (CU.IN.)	RETRACTED HEIGHT (IN.)	EXTENDED HEIGHT (IN.)	DIST. NET	MSRP
PWTRSS101	10 TON	1-1/2"	3.40	3.50	5.00	<b>\$866.59</b>	\$1,083.24
PWTRSS202	20 TON	1-3/4"	7.70	3.75	5.50	<b>\$1,279.54</b>	\$1,599.42
PWTRSS302	30 TON	2-7/16"	15.80	4.63	7.06	<b>\$1,443.56</b>	\$1,804.45
PWTRSS502	50 TON	2-3/8"	22.80	5.00	7.38	<b>\$1,765.32</b>	\$2,206.65

## "RD" SERIES DOUBLE ACTING / HYDRAULIC RETURN CYLINDERS



HIGH TONNAGE PREMIUM DESIGN FOR LONG CYCLE LIFE. PERFECT FOR BRIDGE LIFTING, BUILDING RECONSTRUCTION, SHIPYARD, UTILITY AND MINING EQUIPMENT MAINTENANCE.

10 - 500 TON / 1-1/2" - 3" STROKE LENGTHS

PART #	WEIGHT CAPACITY	STROKE (CU.IN.)	USEABLE OIL CAP (CU.IN.)	RETRACTED HEIGHT (IN.)	EXTENDED HEIGHT (IN.)	DIST. NET	MSRP
PWTRD256	25 TON	6-1/4"	32.20 / 10.10	12.38	18.63	<b>\$3,113.14</b>	\$3,891.42
PWTRD556	55 TON	6-1/4"	69.00 / 35.20	12.97	19.22	<b>\$4,336.83</b>	\$5,421.03
PWTRD5513	55 TON	13-1/8"	144.90 / 73.90	19.84	32.97	<b>\$5,686.01</b>	\$7,107.51

LET US HELP YOU WITH YOUR APPLICATION.

## "RGG/RDG" NITRIDE COATED, SINGLE ACTING & DOUBLE ACTING CYLINDERS



RGG SERIES (SINGLE ACTING) AND RDG SERIES (DOUBLE ACTING) CYLINDERS OFFER OPTIONS FOR HEAVY LIFT, GENERAL PURPOSE AND TOUGH MRO APPLICATIONS.

AVAILABLE IN RANGES FROM  
55 – 600 TONS / STROKE LENGTHS FROM 2" – 14".

*"Power Tech" Nitro-Carburization Surface Treatment inhibits corrosion and provides exceptional durability. Patented "U-Cup" Swivel Cap provides concentrated load centering up to 5 degrees.*

## "RGP" NITRIDE COATED LOW PROFILE (PANCAKE) LOCKING COLLAR CYLINDERS



RGP SINGLE ACTING, LOCKING COLLAR CYLINDERS ARE IDEAL FOR CONFINED AREAS. THE MECHANICAL LOCKING COLLAR MECHANISM SAFELY SUPPORTS LOADS FOR AN EXTENDED PERIOD OF TIME REMOVING THE CHANCE OF A HYDRAULIC LEAK OR SHUT DOWN CAUSING A LOAD SHIFT.

AVAILABLE IN RANGES FROM  
67 – 565 TONS / STROKE LENGTH 1.75".

*"Power Tech" Nitro-Carburization Surface Treatment inhibits corrosion and provides exceptional durability. Patented "U-Cup" Swivel Cap provides concentrated load centering up to 5 degrees.*

## "RGL" NITRIDE COATED LOCKING COLLAR CYLINDERS



RGL SINGLE ACTING, LOCKING COLLAR CYLINDERS ARE IDEAL FOR APPLICATIONS WHERE THE LOAD NEEDS TO BE HELD FOR A PROLONGED PERIOD OF TIME. THE MECHANICAL LOCKING COLLAR MECHANISM SAFELY SUPPORTS LOADS FOR AN EXTENDED PERIOD, REMOVING THE CHANCE OF A HYDRAULIC LEAK OR SHUT DOWN CAUSING A LOAD SHIFT.

AVAILABLE IN RANGES FROM  
55 – 600 TONS / STROKE LENGTHS FROM 2" – 12".

*"Power Tech" Nitro-Carburization Surface Treatment inhibits corrosion and provides exceptional durability. Patented "U-Cup" Swivel Cap provides concentrated load centering up to 5 degrees.*

## "P" SERIES HAND PUMPS - SINGLE ACTING / 1 STAGE



STEEL HAND PUMPS BEST SUITED FOR MRO APPLICATIONS.

*1 Stage pumps always behave as though under load and will provide a consistent speed of travel for the cylinder.*

*Foot pump conversion kits available for some models.*

*For use with 10,000psi Single Acting Cylinders / Tools only.*

PART #	VOLUME PER STROKE (CU. IN.)	OIL CAPACITY (CU. IN.)	USEABLE OIL CAPACITY (CU. IN.)	DIST. NET	MSRP
PWTP12	0.069	12.00	9.00	<b>\$716.36</b>	\$895.46
PWTP23	0.16	23.80	20.30	<b>\$952.64</b>	\$1,190.81
PWTP55	0.16	55.00	45.00	<b>\$741.10</b>	\$926.37

## "P" SERIES HAND PUMPS - SINGLE ACTING / 2 STAGE



STEEL HAND PUMPS BEST SUITED FOR MRO APPLICATIONS.

*2 Stage pumps will stay in a low pressure / high flow stage until the cylinder meets resistance, at which point the high pressure stage kicks in to move the load.*

*Foot pump conversion kits available for some models.*

*For use with 10,000psi Single Acting Cylinders / Tools only.*

PART #	VOLUME PER STROKE (CU. IN.)	OIL CAPACITY (CU. IN.)	USEABLE OIL CAPACITY (CU. IN.)	DIST. NET	MSRP
PWTP19	.076 - .305	24.4	20	<b>\$785.09</b>	\$981.37
PWTP59	0.16 - .662	55	45.00	<b>\$926.09</b>	\$1,157.61
PWTP157	0.16 - 0.65	152	137	<b>\$1,405.48</b>	\$1,756.84
PWTP159	.16 - 2.60	152	137	<b>\$1,268.71</b>	\$1,585.89

## "P" SERIES "LIGHTWEIGHT ALUMINUM" - SINGLE ACTING / 2 STAGE



LIGHTWEIGHT ALUMINUM HAND PUMPS BEST SUITED FOR MRO APPLICATIONS.

*2 Stage pumps will stay in a low pressure / high flow stage until the cylinder meets resistance, at which point the high pressure stage kicks in to move the load.*

*Lightweight aluminum body is easy to move around and more durable than plastic resin materials.*

*For use with 10,000psi Single Acting Cylinders / Tools only.*

PART #	VOLUME PER STROKE (CU. IN.)	OIL CAPACITY (CU. IN.)	USEABLE OIL CAPACITY (CU. IN.)	DIST. NET	MSRP
PWTP19L	0.25 - 0.050	29	27	<b>\$792.73</b>	\$990.91
PWTP59L	0.72 - 0.150	69	66	<b>\$969.63</b>	\$1,212.03

## "P" SERIES HAND PUMPS - DOUBLE ACTING / 2 STAGE



STEEL HAND PUMPS BEST SUITED FOR MRO APPLICATIONS.

2 Stage pumps will stay in a low pressure / high flow stage until the cylinder meets resistance, at which point the high pressure stage kicks in to move the load.

For use with 10,000 PSI Single Acting or Double Acting Cylinders / Tools.

PART #	VOLUME PER STROKE (CU. IN.)	OIL CAPACITY (CU. IN.)	USEABLE OIL CAPACITY (CU. IN.)	DIST. NET	MSRP
P157D	0.160	152	137	<b>\$2,328.39</b>	\$2,910.49
P159D	0.160	152	137	<b>\$2,194.57</b>	\$2,743.21
P300D	0.160	1.5 GAL	310	<b>\$2,284.26</b>	\$2,855.33
P460D	0.294	2.5 GAL	460	<b>\$4,502.10</b>	\$5,627.62

## "PA" SERIES AIR PUMPS - SINGLE ACTING / 1 STAGE



COMPACT LIGHTWEIGHT AND PORTABLE, SINGLE-SPEED, AIR MOTOR PUMPS DESIGNED TO DRIVE SMALL TO MEDIUM SIZED SINGLE-ACTING CYLINDERS. (FOOT PEDAL ACTIVATED VALVE)

For use with 10,000 PSI Single Acting Cylinders / Tools only.

PART #	REG. AIR SUPPLY	OIL CAPACITY (CU. IN.)	USEABLE OIL CAPACITY (CU. IN.)	DIST. NET	MSRP
PWTPA6	40-120 PSI	105	98	<b>\$1,450.85</b>	\$1,813.56
PWTPA6M	40-120 PSI	105	98	<b>\$1,710.95</b>	\$2,138.69
PWTPA6M1	40-120 PSI	1 GAL	185	<b>\$1,849.09</b>	\$2,311.36

## "PA" SERIES AIR PUMPS - DOUBLE ACTING / 1 STAGE



COMPACT LIGHTWEIGHT AND PORTABLE, SINGLE-SPEED, AIR MOTOR PUMPS DESIGNED TO DRIVE SMALL TO MEDIUM SIZED SINGLE-ACTING OR DOUBLE ACTING CYLINDERS.

For use with 10,000 PSI Single Acting Cylinders / Tools only.

PART #	REG. AIR SUPPLY	OIL CAPACITY (CU. IN.)	USEABLE OIL CAPACITY (CU. IN.)	DIST. NET	MSRP
PWTPA6D	40-120 PSI	105	98	<b>\$2,571.73</b>	\$3,214.66
PWTPA6DM	40-120 PSI	105	98	<b>\$2,723.78</b>	\$3,404.73

## "PB" SERIES CORDLESS (BATTERY) PUMPS / SINGLE & DOUBLE ACTING



COMPACT, PORTABLE, CORDLESS 10,000 PSI HYDRAULIC PUMPS FOR MRO & LIFTING APPLICATIONS.

NEW PB10XL SERIES PUMPS HAVE THE SAME FLOW RATE AS OUR EXISTING PB10 SERIES, BUT NOW WITH A LARGER 1.5 GALLON RESERVOIR TO OPERATE LARGER OR MULTIPLE CYLINDERS.

\*PB10 & PB10XL - SMALL TO MEDIUM SIZE

\*PB43 - FOR LARGER, HEAVY DUTY APPLICATIONS

PART #	DESCRIPTION	BATTERY INFO	OPTIONS	USEABLE OIL CAPACITY (CU. IN.)	DIST. NET	MSRP
PWTPB1021	SINGLE ACTING BATTERY PUMP AUTO-DUMP 2 WAY VALVE	MILWAUKEE M18 - 18VDC	HAND & FOOT PENDANT	70	<b>\$4,478.84</b>	\$5,598.56
PWTPB43MA1P1	SINGLE ACTING OR DOUBLE ACTING BATTERY PUMP	POWER TEAM 60V	ROLL CAGE, CHARGER, BATTERY	295	<b>\$11,014.67</b>	\$13,768.34
PWTPB10XL	2 SPEED SINGLE OR DOUBLE ACTING, CORDLESS, XL RESERVOIR	MILWAUKEE M18 - 18VDC	HAND & FOOT PENDANT	289		

## "PE17" / "PE18" SERIES PORTABLE ELECTRIC PUMPS / SINGLE ACTING



#PE172

#PE182

FOR MAINTENANCE AND CONSTRUCTION APPLICATIONS.

FOR USE WITH 10,000 PSI SINGLE ACTING OR DOUBLE ACTING CYLINDERS AND TOOLS.

PART #	DESCRIPTION	FLOW RATE @ 10,000 PSI	MOTOR	USABLE OIL CAPACITY (CU. IN.)	DIST. NET	MSRP
PWTPE172	2 WAY VALVE (ADVANCE/RETURN) / 10' REMOTE MOTOR CONTROL PENDANT	17 CU.IN./MIN.	1/2 HP, 110/115 VAC 50/60HZ, SINGLE PHASE	295	<b>\$4,294.99</b>	\$5,368.74
PWTPE182	2 WAY VALVE (ADVANCE/RETURN) / 10' REMOTE MOTOR CONTROL PENDANT	18 CU.IN./MIN.	1/2 HP, 110/115 VAC 50/60HZ A.C., SINGLE PHASE	104	<b>\$6,014.38</b>	\$7,517.98

## "PE17" / "PE18" SERIES PORTABLE ELECTRIC PUMPS / DOUBLE ACTING



#PE174

#PE184

FOR MAINTENANCE AND CONSTRUCTION APPLICATIONS.

FOR USE WITH 10,000 PSI SINGLE ACTING OR DOUBLE ACTING CYLINDERS AND TOOLS.

PART #	DESCRIPTION	FLOW RATE @ 10,000 PSI	MOTOR	USABLE OIL CAPACITY (CU. IN.)	DIST. NET	MSRP
PWTPE174	4 WAY VALVE (ADVANCE/HOLD/ RETURN) / 10' REMOTE MOTOR CONTROL PENDANT	17 CU.IN./MIN.	1/2 HP, 110/115 VAC 50/60HZ, SINGLE PHASE	295	<b>\$5,332.25</b>	\$6,665.31
PWTPE184	4 WAY VALVE (ADVANCE/HOLD/ RETURN) / 10' REMOTE MOTOR CONTROL PENDANT	18 CU.IN./MIN.	1/2 HP, 110/115 VAC 50/60HZ SINGLE PHASE	104	<b>\$6,231.74</b>	\$7,789.68



**PORTABLE & EXPANDABLE HYDRAULIC MULTI-POINT MOTION CONTROL SYSTEM. SYNCHRONOUS LIFTING / LOWERING, OR PUSHING / PULLING FOR HEAVY OBJECTS.**

**PRECISION**

ESYNC CAN HANDLE UP TO 4 LIFTING POINTS PER UNIT (UNITS CAN BE DAISY CHAINED AND FUNCTION FROM ONE MASTER CONTROL UNIT FOR UP TO 16 ESYNC UNITS - OR 64 LIFT POINTS) WITHIN A MILLIMETER OF ACCURACY RANGE.

**COST**

ESYNC IS ABOUT 30% OF THE COST OF A FULL MOTION CONTROL SYSTEM.

**VERSATILITY**

CAN USE ANY PUMP ON THE MARKET WITH ESYNC - AC, BATTERY, OR AIR DRIVEN PUMPS. ERGONOMIC FOOTPRINT - LIGHTWEIGHT AND PORTABLE. CAN BE LOADED INTO A TRUCK BED BY HAND & ONE PERSON CAN ASSEMBLE IN MINUTES

**EASE OF USE**

NO TOUCH SCREENS AND MULTIPLE TRANSDUCER - MUCH EASIER TO USE THAN A STANDARD MOTION CONTROL SYSTEM

PART #	DESCRIPTION	BATTERY
PWTESYNC	PORTABLE & EXPANDABLE MOTION CONTROL SYSTEM	CORDLESS 60VDC & 115VAC OR 230VAC POWERED OPTIONS

**COUPLERS - QUICK DISCONNECT**



**#9795**  
FULL SET : 1 X MALE END  
1 X FEMALE END



**#9796**  
FEMALE : CYLINDER /  
TOOL END

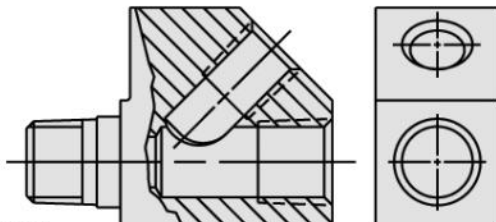


**#9798**  
MALE : HOSE END

PLEASE ASK US ABOUT OUR SELECTION OF COUPLERS AND FITTINGS.  
THE ITEMS SHOWN ABOVE ARE COMPATIBLE WITH MOST COMPETITIVE 10,000 PSI BRANDS.

PART #	DESCRIPTION	DIST. NET	MSRP
PWT9795	QUICK COUPLER, COMPLETE SET (MALE/FEMALE HALVES)	<b>\$153.53</b>	\$191.91
PWT9796	QUICK COUPLER - 3/8" NPTF - FEMALE HALF, W/CAP	<b>\$93.01</b>	\$116.26
PWT9798	QUICK COUPLER - 3/8" NPTF - MALE HALF, W/CAP	<b>\$73.06</b>	\$91.33

**GAUGE ADAPTORS**



**#9699**

45 DEGREE GAUGE ADAPTOR CROSS-SECTION SHOWN.  
3/8" NPTF FITTING PORTS WITH 1/4" NPTF GAUGE PORT.

ASK US ABOUT OUR COMPLETE SELECTION OF FITTINGS AND ADAPTORS.

PART #	TYPE	STYLE	DIST. NET	MSRP
PWT9699	PASS-THROUGH	45 DEG.	<b>\$121.50</b>	\$151.88
PWT9670	PASS-THROUGH	90 DEG.	<b>\$107.71</b>	\$134.64

## GAUGES - ANALOG



#9052



#9040GA

### HEAVY DUTY HYDRAULIC PRESSURE GAUGES A MUST FOR ALL SYSTEMS!

ASK US ABOUT OUR COMPLETE SELECTION OF  
GAUGES FOR ALL APPLICATIONS.

PART #	DESCRIPTION	SIZE (IN.)	SCALE	CYLINDER TYPES	SILICONE FILLED	DIST. NET	MSRP
PWT9040GA	NEW! 2.5" GAUGE W/ COUPLER & 45 DEG. ADAPTOR	2.50	2500/500 PSI	UNIVERSAL	YES	<b>\$432.10</b>	\$540.12
PWT9040	10,000 PSI GAUGE / 500-2500 PSI GRADUATIONS	2.50	2500/500 PSI	UNIVERSAL	YES	<b>\$217.25</b>	\$271.56
PWT9052	10,000 PSI GAUGE / 200/1000 PSI GRADUATIONS	4.00	10K/2000 PSI	UNIVERSAL	YES	<b>\$483.05</b>	\$603.81
PWT9077	10,000 PSI GAUGE / 2000 PSI AND 10-20 TON GRADUATIONS	4.00	0-150 TON	C/R/RD/RLS SERIES	NO	<b>\$398.47</b>	\$498.09
PWT9079	10,000 PSI GAUGE / 2000 PSI AND 10-20 TON GRADUATIONS	4.00	0-200 TON	R/RD/RH SERIES	NO	<b>\$444.52</b>	\$555.65

## GAUGES - DIGITAL

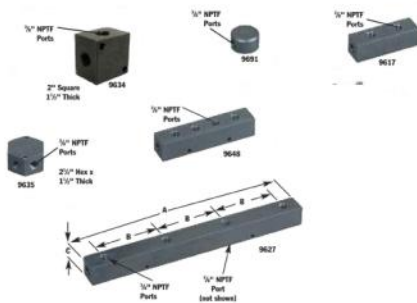


EASIER TO READ THAN A STANDARD ANALOG GAUGE WITH  
GREATER ACCURACY. BACK-LIT LED SCREEN WITH MULTIPLE  
DISPLAY SETTINGS.

"AA" BATTERY POWERED WITH A 2000 HOUR LIFE.

PART #	DESCRIPTION	SIZE (IN.)	SCALE	CYLINDER TYPES	SILICONE FILLED	DIST. NET	MSRP
PWT9042DG	10,000 PSI / 700 BAR DIGITAL GAUGE - BACK-LIT - 2X AA BATTERIES	2.5	MULTI SETTINGS	UNIVERSAL	N/A	<b>\$1,059.83</b>	\$1,324.79

## MANIFOLDS - BLOCKS



SELECT FROM A WIDE ASSORTMENT OF 10,000 PSI HIGH  
PRESSURE MANIFOLD BLOCKS TO CUSTOMIZE YOUR SYSTEM.

MANIFOLD BLOCKS WILL ALLOW EQUAL FLOW TO ALL  
PORTS WITHOUT NEEDLE VALVES OR OTHER EXTERNAL  
FLOW CONTROL.

PART #	# OF PORTS	PORT SIZE	DIST. NET	MSRP
PWT9617	6	3/8" NPTF	<b>\$242.54</b>	\$303.18
PWT9634	4	3/8" NPTF	<b>\$133.93</b>	\$167.41
PWT9648	7	3/8" NPTF	<b>\$227.42</b>	\$284.28
PWT9691	3	3/8" NPTF	<b>\$102.04</b>	\$127.55

## MANIFOLDS - WITH NEEDLE VALVES



#9642



#9644

MANIFOLD BLOCKS WITH NEEDLE VALVES ALLOW FOR INDEPENDENT CONTROL MULTIPLE-CYLINDER OPERATION FROM A SINGLE HYDRAULIC PUMP SOURCE.

PART #	# OF PORTS	PORT SIZE	DIST. NET	MSRP
PWT9642	2	3/8" NPTF	<b>\$959.88</b>	\$1,199.85
PWT9644	4	3/8" NPTF	<b>\$1,516.97</b>	\$1,896.22

## MANIFOLDS - "LM" SERIES 4 PORT LIFTING MANIFOLD



4 PORT LIFTING CONTROL MODULES. SINGLE AND DOUBLE ACTING CONFIGURATIONS FOR SIMPLE LIFTING APPLICATIONS.

PLUG & PLAY / FIELD READY OUT OF THE BOX.

PART #	DESCRIPTION	DIST. NET	MSRP
PWTLM4S	NEW! 4 PORT LIFTING MANIFOLD - SINGLE ACTING	<b>\$2,923.70</b>	\$3,654.63
PWTLM4D	NEW! 4 PORT LIFTING MANIFOLD - DOUBLE ACTING	<b>\$3,588.32</b>	\$4,485.40

## VALVES - HYDRAULIC IN-LINE (SHUT-OFF/REGULATOR)



#9596



#9633



#9575

ASK US ABOUT OUR COMPLETE SELECTION OF HYDRAULIC IN-LINE VALVES TO CUSTOMIZE YOUR SYSTEM.

PART #	DESCRIPTION	DIST. NET	MSRP
PWT9596	VALVE, LOAD LOWERING, RM, MANUAL	<b>\$689.12</b>	\$861.40
PWT9633	PRESURE REGULATOR VALVE, IN-LINE,	<b>\$669.18</b>	\$836.47
PWT9575	VALVE, SHUT OFF, 3/8" NPTF PORTS	<b>\$241.75</b>	\$302.19

## HYDRAULIC OIL



AVAILABLE IN 4 DIFFERENT TYPES:

STANDARD  
FLAME-OUT (FIRE-RESISTANT)  
BIODEGRADABLE  
LOW-TEMPERATURE

(1 QUART - 55 GALLON DRUMS)

PART #	TYPE	SIZE	DIST. NET	MSRP
PWT9636	STANDARD	1 QUART	\$52.77	\$65.97
PWT9637	STANDARD	1 GALLON	\$91.98	\$114.98
PWT9638	STANDARD	2.5 GALLON	\$160.26	\$200.32
PWT9647	LOW TEMP	1 GALLON	\$104.29	\$130.36
PWT9639	FLAME-OUT	1 GALLON	\$243.35	\$304.18
PWT9640	FLAME-OUT	2.5 GALLON	\$573.78	\$717.22
PWT9645	BIO-DEGRADABLE	1 GALLON	\$177.24	\$221.55
PWT9646	BIO-DEGRADABLE	2.5 GALLON	\$404.52	\$505.64

## HOSES - RUBBER / WIRE BRAID - 20,000 PSI RATED

RUBBER HOSES FOR USE WITH 10,000 PSI HYDRAULIC EQUIPMENT ONLY.

RUBBER HOSES ARE MORE FLEXIBLE BUT DON'T OFFER THE SAME DURABILITY AS POLYURETHANE.

STANDARD FLOW HOSES (1 / 4" I.D.) & HIGH FLOW (3 / 8" I.D.) - LENGTHS FROM 3' TO 50'.

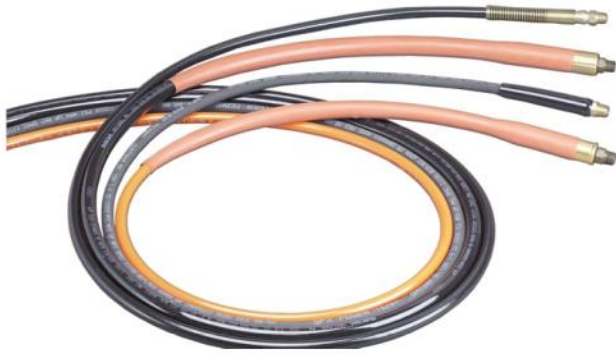
ALL HOSES COME EQUIPPED WITH 3 / 8" NPTF MALE ENDS, BUT DO NOT ALL COME WITH QD COUPLERS.



PART #	INTERNAL DIA. (IN.)	LENGTH (FT.)	DIST. NET	MSRP
PWT9755	1/4"	3'	\$173.82	\$217.27
PWT9756	1/4"	6'	\$210.98	\$263.72
PWT9757	1/4"	8'	\$236.51	\$295.64
PWT9758	1/4"	10'	\$267.97	\$334.96
PWT9759	1/4"	12'	\$296.35	\$370.44
PWT9760	1/4"	20'	\$417.39	\$521.74
PWT9776	3/8"	6'	\$364.62	\$455.78
PWT9777	3/8"	10'	\$461.39	\$576.74
PWT9734	3/8"	15'	\$662.22	\$827.78
PWT9778	3/8"	20'	\$495.70	\$619.62

## HOSES POLYURETHANE (NYLON CORE TUBE) 20,000 PSI RATED

### POLYURETHANE HOSES FOR USE WITH 10,000 PSI HYDRAULIC EQUIPMENT ONLY.



POLYURETHANE HOSES FOR USE WITH 10,000 PSI HYDRAULIC EQUIPMENT. POLYURETHANE HOSES ARE MORE DURABLE BUT DON'T OFFER THE SAME FLEXIBILITY AS RUBBER.

STANDARD FLOW HOSES (1 / 4" I.D.) AND HIGH FLOW (3 / 8" I.D.) - LENGTHS FROM 2' TO 50'

ALL HOSES COME EQUIPPED WITH 3 / 8" NPTF MALE ENDS, BUT DO NOT ALL COME WITH QD COUPLERS.

PART #	INTERNAL DIA. (IN.)	LENGTH (FT.)	DIST. NET	MSRP
PWT9765	1/4"	2'	<b>\$99.62</b>	\$124.52
PWT9767	1/4"	6'	<b>\$272.18</b>	\$340.23
PWT9768	1/4"	8'	<b>\$199.47</b>	\$249.33
PWT9769	1/4"	10'	<b>\$356.19</b>	\$445.23
PWT9770	1/4"	12'	<b>\$398.93</b>	\$498.66
PWT9771	1/4"	20'	<b>\$562.49</b>	\$703.11
PWT9780	3/8"	6'	<b>\$478.49</b>	\$598.11
PWT9781	3/8"	10'	<b>\$676.47</b>	\$845.59
PWT9782	3/8"	20'	<b>\$971.22</b>	\$1,214.03

## START UP KITS - 10 TON / 25 TON



VERSATILE 10/25 TON MAINTENANCE KITS COMPLETE WITH HIGH QUALITY CARRYING CASE.

EACH KIT CONTAINS ONE OF OUR LIGHTWEIGHT ALUMINUM HAND PUMPS, A 1 TON HYDRAULIC SPREADER, 4 DIFFERENT SIZED CYLINDERS, HOSE, GAUGE AND FITTINGS.

PART #	DESCRIPTION	INCLUDES CYLINDERS	INCLUDES TOOLS	DIST. NET	MSRP
PWTSK10T	10 TON KIT - P19L PUMP / CYL. / TOOLS & ACCESSORIES	C106C-RSS101-RH123-RLS100	HS2000	<b>\$6,170.19</b>	\$7,712.74
PWTSK25T	25 TON KIT - P59L PUMP / CYL. / TOOLS & ACCESSORIES	C256C-RSS302-RH302-RLS300	HS2000	<b>\$9,203.46</b>	\$11,504.33

## HYDRAULIC MAINTENANCE SET - 10 TON



TURNKEY, EXTREMELY VERSATILE MECHANICS MAINTENANCE SETS. GREAT FOR MULTIPLE APPLICATIONS.

KITS COME WITH PUMP CHOICE, 2 X 10 TON CYLINDERS WITH DIFFERENT STROKE LENGTHS, A VARIETY OF EXTENSION BARS AND CYLINDER MOUNTING ACCESSORIES, 1 TON SPREADER, HOSE, GAUGE AND FITTINGS.

LARGE CARRY CASE INCLUDED.

PART #	DESCRIPTION	INCLUDES CYLINDERS	INCLUDES TOOLS	DIST. NET	MSRP
PWTIM10H	MAINTENANCE SET, HAND PUMP P59	C106CBT	CYL.BASE/EXT.RODS	<b>\$4,401.45</b>	\$5,501.81
PWTIM10L	MAINTENANCE SET, HAND PUMP P59L	C106CBT	CYL.BASE/EXT.RODS	<b>\$4,343.07</b>	\$5,428.84

## HYDRAULIC SPREADERS - 1 / 1.5 TON



HYDRAULIC SPREADERS OFFER A GREATER FORCE THAN TRADITIONAL MECHANICAL TOOLS.

GREAT FOR TIGHT AREAS IN LIFTING OR TO SPREAD CONCRETE FORMS OR REBAR.

PART #	CAPACITY (TONS)	OIL CAPACITY (CU. IN.)	TYPE	MAX. SPREAD (IN.)	DIST. NET	MSRP
PWTHS2000	1.0	0.63	DUCK BILL	4.00"	<b>\$686.73</b>	\$858.41
PWTHS3000	1.5	3.50	DUCK BILL	11.50"	<b>\$1,807.15</b>	\$2,258.94

## HYDRAULIC NUT SPLITTERS



SPECIFICALLY DESIGNED "TOOL STEEL" CUTTER BLADE PENETRATES THE NUT TO THE PRECISE POINT WHERE IT CRACKS, STOPPING SHORT OF THE BOLT THREADS.

PART #	CAPACITY	TYPE	DIST. NET	MSRP
PWTHNS150	15 TON	STRAIGHT	<b>\$2,413.16</b>	\$3,016.45
PWTHNS150A	15 TON	ANGLED	<b>\$3,187.33</b>	\$3,984.16
PWTHNS225	25 TON	STRAIGHT	<b>\$3,829.27</b>	\$4,786.59

## HYDRAULIC TORQUE WRENCHES - SQUARE DRIVE

### BOLTING SYSTEMS



10,000 PSI, PREMIUM QUALITY HYDRAULIC SQUARE DRIVE TORQUE WRENCHES.

AVAILABLE IN DRIVE SIZES FROM 3/4" – 2-1/2" WITH TORQUE CAPACITIES FROM 170 – 53,000 FT. LBS. ALTERNATE REACTION BARS AND ACCESSORIES ARE ALSO AVAILABLE.

PLEASE CONTACT US FOR ASSISTANCE IN SELECTING THE CORRECT TOOL FOR THE JOB!

MORE SIZES AVAILABLE

PART #	DESCRIPTION	DRIVE SIZE	MIN. TORQUE	MAX. TORQUE	WEIGHT	DIST. NET	MSRP
PWTTWHC1	TORQUE WRENCH, SQ DRV	3/4" SQUARE DRIVE	170 FT.LBS.	1,413 FT. LBS.	6.2 LBS.	<b>\$7,248.33</b>	\$9,060.41
PWTTWHC3	TORQUE WRENCH, SQ DRV	1" SQUARE DRIVE	376 FT.LBS.	3,136 FT. LBS.	11.7 LBS.	<b>\$9,078.39</b>	\$11,347.99

## HYDRAULIC TORQUE WRENCHES - LOW CLEARANCE

### BOLTING SYSTEMS



OUR TWLC SERIES WRENCH WAS DESIGNED FOR THE MOST INACCESSIBLE BOLTING AREAS FOUND IN THE INDUSTRY. EACH WRENCH CONSISTS OF 2 PIECES – A DRIVE BODY AND A SPECIFICALLY SIZED LINK OR CASSETTE.

*\*THESE PIECES ARE ALWAYS ORDERED SEPARATELY.*

WITH LINK SIZES FROM 1" – 6-1/8" AND TORQUE CAPACITIES FROM 256 – 28,800 FT.LBS. WE HAVE A TOOL FOR MOST ANY APPLICATION.

PLEASE CONTACT US FOR ASSISTANCE IN SELECTING THE CORRECT TOOL FOR THE JOB!

## HYDRAULIC TORQUE WRENCH PUMPS - 10,000 PSI

### BOLTING SYSTEMS



#PE55TWP-BS



#PE601BA1P

OUR CLASSIC PE55TWP SERIES 10,000 PSI TORQUE WRENCH PUMP REMAINS THE INDUSTRY STANDARD AND CONTINUES TO PERFORM IN A VARIETY OF ENVIRONMENTS.

WITH THE ADDITION OF OUR NEW PE60 SERIES PUMPS, WE ARE ABLE TO OFFER THE NEXT GENERATION OF FEATURES AND BENEFITS INCLUDING A "GLOVE FRIENDLY" LCD TOUCHSCREEN WITH REAR HEATER, SLIGHT INCREASE IN FLOW RATE AND PERFORMANCE AND OPTIONAL TANKS, COOLERS AND MANIFOLDS (SINGLE TOOL OR 4 TOOL).

PLEASE CONTACT US WITH HELP SELECTING THE CORRECT PUMP FOR YOUR PROJECT.

PART #	DESCRIPTION	MANIFOLD	MOTOR	USEABLE OIL CAP.	WEIGHT	DIST. NET	MSRP
PWTPE55TWPBS	TORQUE WRENCH PUMP, ELEC / HYD - 110/115V	SINGLE TOOL	1-1/8 HP, 12,000 RPM, 110/115 VAC 50/60HZ, 25 AMPS	324	6.2 LBS	<b>\$12,122.46</b>	\$15,153.07
PWTPE601BA1P	NEW! TORQUE WRENCH PUMP, ELEC / HYD	SINGLE TOOL	115 VAC 50/60HZ, SINGLE PHASE - 28 AMPS	295	11.7 LBS	<b>\$12,432.37</b>	\$15,540.46

## HYDRAULIC BOLTING FLOW CONTROL VALVE

### BOLTING SYSTEMS



IN FIELD APPLICATIONS, IT IS COMMON TO HAVE A 2 PERSON TEAM OPERATING A HYDRAULIC TORQUE WRENCH. THE PERSON HOLDING THE WRENCH AND THE PERSON CONTROLLING THE PUMP.

IN A LOUD ENVIRONMENT, VERBAL COMMUNICATION CAN BE HARD TO HEAR. "NO" AND "GO" SOUND THE SAME IN A LOT OF NOISY ENVIRONMENTS. THIS CONTROL VALVE IS HELD BY THE PERSON WITH THE WRENCH TO ACTIVATE OR QUICKLY STOP THE FLOW OF OIL TO THE WRENCH.

OUR SPECIALLY DESIGNED BOLTING FLOW CONTROL VALVE FEATURES A PRESSURE BALANCED SPOOL MECHANISM ALLOWING FOR EASIER TRIGGER PULL / SQUEEZE EFFORT, 2-STAGE TRIGGER SYSTEM, 2:1 SAFETY FACTOR (PRESSURE TEST MIN 20,000 PSI) & CAN BE USED WITH ANY HYDRAULIC TORQUE WRENCH.

PLEASE CONTACT US FOR PRICE AND AVAILABILITY.

PART #	DESCRIPTION	DIST. NET	MSRP
PWT400148	HYDRAULIC BOLTING FLOW CONTROL VALVE		

## HYDRAULIC TORQUE WRENCH HOSE SET

### BOLTING SYSTEMS



OUR SPECIALLY DESIGNED TWIN LINE TORQUE WRENCH HOSES FEATURE OPPOSITE MALE/FEMALE 3/8" NPTF COUPLERS ON EACH END TO AVOID INCORRECT HOOK UP AT THE PUMP & TOOL ENDS. THE LINES ARE COLOUR CODED BLACK AND GREEN FOR FURTHER DIFFERENTIATION IN THE FIELD AND OVERALL INCREASED SAFETY.

AVAILABLE IN LENGTHS OF 15' / 20' / 50'.

PLEASE CONTACT US FOR PRICE AND AVAILABILITY.

PART #	DESCRIPTION	DIST. NET	MSRP
PWTTWH15BS	HOSE, TWIN TORQUE WRENCH 15' LENGTH, BLK/GRN	\$1,307.35	\$1,634.19

## HYDRAULIC "C" CLAMPS



FOR CLAMPING, PRESSING AND BENDING. IDEAL FOR WELDING & METAL FABRICATION FOR "FIT UP" OF SHEET OR PLATE STEEL.

AVAILABLE IN 5 / 10 / 25 TON CAPACITIES FOR USE WITH POWER TEAM "C" SERIES SINGLE ACTING CYLINDERS (CYLINDER NOT INCLUDED).

(CYLINDER SWIVEL CAPS ARE ALSO AVAILABLE TO AVOID SIDE LOADING.)

PART #	CAPACITY	USE W/ CYLINDERS	DIST. NET	MSRP
PWTCC5	5 TON	C51C - C57C	\$749.76	\$937.20
PWTCC10	10 TON	C101C - C1010C	\$1,550.47	\$1,938.09
PWTCC25	25 TON	C251C - C214C	\$2,654.82	\$3,318.53

## JIMMY / PRY BARS



IDEAL FOR GENERAL LIFTING OR PRYING.  
HIGH QUALITY, HEAT TREATED CHROME ALLOY STEEL RESISTS BENDING OR BREAKING.

AVAILABLE IN LENGTHS 6" - 54"

PART #	LENGTH	DIAMETER	DIST. NET	MSRP
PWT7167	24"	3/4"	<b>\$87.19</b>	\$108.99
PWT7168	30"	7/8"	<b>\$100.30</b>	\$125.38

## BOTTLE JACKS "SIDEWINDER" 5-20 TON MINI JACKS



COMPACT SIDEWINDER MINI JACK FITS IN YOUR PALM AND DELIVERS BETWEEN 5-20 TONS OF LIFTING FORCE.

STROKE LENGTHS FROM 3/4" - 1-1/8"  
RETRACTED HEIGHTS FROM 2-1/2" - 5-1/8".

PART #	CAPACITY	STROKE LENGTH (IN.)	RETRACTED HEIGHT (IN.)	MAX. HEIGHT (IN.)	DIST. NET	MSRP
PWT9105A	5 TON	3/4"	2.5	3.38	<b>\$379.78</b>	\$474.73
PWT9205A	5 TON	1-1/2"	3.5	5.13	<b>\$721.96</b>	\$902.45

## BOTTLE JACKS - LOW PROFILE



THE RIGHT CHOICE FOR THOSE LOWER CLEARANCE JOBS OR APPLICATIONS.

12-30 TON CAPACITIES  
EXTENDED HEIGHTS FROM 10-1/4" - 13-1/2"

PART #	CAPACITY	STROKE LENGTH (IN.)	RETRACTED HEIGHT (IN.)	MAX. HEIGHT (IN.)	DIST. NET	MSRP
PWT9012A	12 TON	3-3/4"	6.75	13.50	<b>\$382.97</b>	\$478.72
PWT9020A	20 TON	3-3/8"	7.13	12.00	<b>\$530.58</b>	\$663.22
PWT9130A	30 TON	3-1/8"	7.13	10.25	<b>\$776.32</b>	\$970.40

## BOTTLE JACKS - STANDARD



IDEAL FOR INDUSTRIAL/MRO LIFTING AND PUSHING APPLICATIONS.

2 - 110 TON CAPACITIES / STROKE LENGTHS FROM 4 - 1/2" - 6 - 1/8"

PART #	CAPACITY	STROKE LENGTH (IN.)	RETRACTED HEIGHT (IN.)	MAX. HEIGHT (IN.)	DIST. NET	MSRP
PWT9002A	2 TON	4-1/2"	7.13	13.56	<b>\$210.29</b>	\$262.87
PWT9005A	5 TON	4-3/4"	7.88	15.38	<b>\$294.18</b>	\$367.73
PWT9008A	8 TON	4-3/4"	7.88	15.38	<b>\$329.97</b>	\$412.47
PWT9120A	20 TON	6-1/8"	10.63	20.5	<b>\$547.56</b>	\$684.45
PWT9022B	22 TON	6-1/8"	9.44	20.5	<b>\$920.39</b>	\$1,150.49

## BOTTLE JACKS - TELESCOPING



EXTENDED STROKE LENGTHS FOR ELIMINATION OF CRIBBING. IDEAL FOR INDUSTRIAL/MRO LIFTING APPLICATIONS.

6 - 13 TON CAPACITIES / STROKE LENGTHS FROM 10" - 12" EXTENDED HEIGHTS OF 20" - 22 - 1/2"

PART #	CAPACITY	STROKE LENGTH (IN.)	RETRACTED HEIGHT (IN.)	MAX. HEIGHT (IN.)	DIST. NET	MSRP
PWT9006X	6 TON	12"	8.50	20.50	<b>\$736.54</b>	\$920.67
PWT9011X	11 TON	10-3/8"	7.88	20.88	<b>\$783.97</b>	\$979.96

## SHOP PRESS - BENCH TOP - 10 TON



IDEAL FOR SMALL PRESSING JOBS, REPAIRING SMALL MOTOR ARMATURES, REMOVING AND INSTALLING GEARS, BEARINGS AND OTHER PRESS FIT PARTS.

SMALL BENCH TOP PROFILE REDUCES THE NEED FOR A LARGE FLOOR STANDING PRESS WHERE ONLY SMALL APPLICATIONS ARE REQUIRED.

15 - 3/8" X 18" WORK AREA. AVAILABLE WITH MANUAL, ELECTRIC AND AIR PUMP OPTIONS.

PART #	CAPACITY	STROKE LENGTH (IN.)	PUMP TYPE	DIST. NET	MSRP
PWTSPM1010	10 TON	10-1/8"	1 STAGE HAND PUMP - P55	<b>\$3,606.10</b>	\$4,507.62

## SHOP PRESSES - FLOOR STANDING "H" FRAME



### HEAVY DUTY INDUSTRIAL, USA MADE "H" FRAME PRESSES.

THESE FLOOR STANDING "H" FRAME PRESSES COME IN CAPACITIES OF 10 – 200 TON WITH 6" – 14" STROKE LENGTHS.

MANUAL, ELECTRIC, AIR PUMP AND NO PUMP OPTIONS ARE AVAILABLE. PLEASE CONTACT US FOR ASSISTANCE IN SELECTING THE RIGHT PRESS FOR YOUR APPLICATION!

PART #	CAPACITY	STROKE LENGTH (IN.)	PUMP TYPE	DIST. NET	MSRP
PWTSPH1010	10 TON	10-1/8"	1 STAGE HAND PUMP - P55	\$3,868.23	\$4,835.29
PWTSPE1010	10 TON	10-1/8"	2 STAGE ELECTRIC PUMP - PE102	\$6,028.06	\$7,535.08
PWTSP1010A	10 TON	10-1/8"	1 STAGE AIR PUM - PA9H	\$4,735.19	\$5,918.98
PWTSPE1010D	10 TON	10-1/8"	2 STAGE ELECTRIC PUMP - PE104	\$9,359.35	\$11,699.19
PWTSPA256	25 TON	6-1/4"	1 STAGE AIR PUMP - PA6	\$10,276.44	\$12,845.55
PWTSPM256	25 TON	6-1/4"	2 STAGE HAND PUMP - P59	\$9,379.30	\$11,724.13
PWTSPE256	25 TON	6-1/4"	2 STAGE ELECTRIC PUMP - PE172	\$12,490.95	\$15,613.69
PWTSPM2514	25 TON	14-1/4"	2 STAGE HAND PUMP - P159	\$11,681.35	\$14,601.69
PWTSPA2514	25 TON	14-1/4"	1 STAGE AIR PUMP - PA6	\$11,842.29	\$14,802.87
PWTSPE2514	25 TON	14-1/4"	2 STAGE ELECTRIC PUMP - PE172	\$15,306.94	\$19,133.68
PWTSPE2514DS	25 TON	14-1/4"	2 STAGE ELECTRIC PUMP - PE214	\$24,212.89	\$30,266.11
PWTSPM556	55 TON	6-1/4"	2 STAGE HAND PUMP - P159	\$14,764.15	\$18,455.19
PWTSPA556	55 TON	6-1/4"	1 STAGE AIR PUMP - PA6	\$15,411.35	\$19,264.19
PWTSPE556	55 TON	6-1/4"	2 STAGE ELECTRIC PUMP - PE172	\$18,920.22	\$23,650.28
PWTSPM5513	55 TON	13-1/4"	2 STAGE HAND PUMP - P460	\$20,058.54	\$25,073.18
PWTSPE5513D	55 TON	13-1/4"	2 STAGE ELECTRIC PUMP D/A - PE174	\$22,153.04	\$27,691.30
PWTSPE5513DS	55 TON	13-1/4"	2 STAGE ELECTRIC PUMP D/A - PQ604S	\$28,320.82	\$35,401.02
PWTSPM10010	100 TON	10-1/8"	2 STAGE HAND PUMP - P460	\$26,185.99	\$32,732.49
PWTSPE10010	100 TON	10-1/8"	2 STAGE ELECTRIC PUMP - PQ603	\$33,444.92	\$41,806.15
PWTSPE10013DS	100 TON	13-1/4"	2 STAGE ELECTRIC PUMP - PQ1204S	\$40,462.22	\$50,577.77
PWTSPE15013DS	150 TON	13-1/4"	2 STAGE ELECTRIC PUMP - PQ1204S	\$68,702.13	\$85,877.66
PWTSPE20013DS	200 TON	13-1/4"	2 STAGE ELECTRIC PUMP - PQ1204S	\$71,516.52	\$89,395.65

## SHOP PRESSES - "H" FRAME ROLL BED



THE ORIGINAL PATENTED "ROLL BED" EXTENDS OUT FOR EASY LOADING OR UNLOADING WITH A CRANE OR OTHER LIFTING DEVICE.

SUPPORTS LOADS UP TO 3,000 LBS. AVAILABLE IN CAPACITIES OF 80 / 100 / 150 / 200 TON ALL WITH 13" STROKE "RD" SERIES DOUBLE ACTING CYLINDERS.

CALL US FOR ASSISTANCE IN SELECTING THE BEST PRESS FOR YOUR APPLICATION.

## PULLERS - MECHANICAL 2 & 3 JAW PULLERS



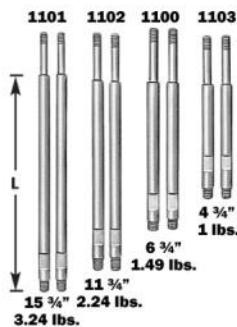
VERSATILE DESIGN OFFERS A TIGHT GRIP FOR YOUR PULLING APPLICATIONS.

CAPACITIES FROM 10 - 25 TON - 2 JAW, 3 JAW AND 2 / 3 JAW COMBOS AVAILABLE.

CONTACT US FOR A COMPLETE LISTING OF AVAILABLE SIZES AND STYLES.

PART #	CAPACITY (TONNAGE)	# OF JAWS	SPREAD (IN.)	REACH (IN.)	DIST. NET	MSRP
PWT1024	5	2 / 3	6.00	3.25	<b>\$220.32</b>	\$275.40
PWT1027	5	2 LONG	7.00	5.50	<b>\$415.80</b>	\$519.75
PWT1036	7	2 LONG	9.50	8.75	<b>\$424.69</b>	\$530.86
PWT1037	7	2 / 3	10.50	5.00	<b>\$540.84</b>	\$676.04
PWT1041	13	2 / 3	12.00	11.00	<b>\$1,083.84</b>	\$1,354.79

## PULLERS - PULLER LEGS



PULLER LEGS FOR OUR MECHANICAL BI-DIRECTIONAL PULLERS.

SIZES FROM 4 - 1/2" - 30"

PART #	LENGTH (IN.)	WEIGHT (LBS.)	DIST. NET	MSRP
PWT1104	16.50	6.50	<b>\$249.73</b>	\$312.16
PWT1106	9.50	4.50	<b>\$203.80</b>	\$254.75
PWT1109	8.00	8.00	<b>\$361.32</b>	\$451.65
PWT1110	18.00	15.00	<b>\$516.10</b>	\$645.13

## PULLERS - BEARING PULLER ATTACHMENTS



IDEAL FOR TIGHT SPACES WHERE HOOKING PULLER JAWS DIRECTLY ONTO THE PART IS NOT AN OPTION.

PLEASE CONTACT US FOR A LIST OF ALL AVAILABLE SIZES & PRICING.

PART #	CAPACITY (TONNAGE)	MAX. SPREAD (IN.)	MIN. SPREAD (IN.)	DIST. NET	MSRP
PWT1123	17.5	4.63	0.5	<b>\$196.16</b>	\$245.20
PWT1124	17.5	5.75	0.5	<b>\$465.38</b>	\$581.73
PWT1126	30	8	0.63	<b>\$695.16</b>	\$868.96

## PULLERS - GEAR & PULLEY



GEAR & PULLEY PULLER - SPREAD RANGE 1.50" - 4.25"

DIST. NET	MSRP
<b>\$110.56</b>	\$138.20

## PULLERS - PULLER THREADED ADAPTORS (MALE / FEMALE)



MALE AND FEMALE PULLER ADAPTORS FOR USE WITH BI-DIRECTIONAL PULLER FORCING SCREWS, LEGS OR SLIDE-HAMMERS IN THE REMOVAL AND INSTALLATION OF SHAFTS, AXELS AND HOUSINGS.

CONTACT US FOR A COMPLETE LIST OF AVAILABLE ADAPTORS.

PART #	FEMALE END (IN.)	MALE END (IN.)	LENGTH (IN.)	DIST. NET	MSRP
PWT8005	5/8" - 18	3/8" - 16	2.25	<b>\$62.23</b>	\$77.79
PWT8007	5/8" - 18	1/2" - 13	2.25	<b>\$62.23</b>	\$77.79
PWT8013	5/8" - 18	3/4" - 16	2.25	<b>\$69.53</b>	\$86.91
PWT8035	1/2" - 20	5/8" - 18	N/A	<b>\$69.53</b>	\$86.91
PWT8038	5/8" - 18	3/4" - 16	N/A	<b>\$80.93</b>	\$101.16

## PULLERS - SHAFT PROTECTORS & SETS



#8056

POWER TEAM SHAFT PROTECTORS ARE DESIGNED TO PROTECT SHAFT CENTRES FROM DISTORTION WHEN EXTREME PRESSURES ARE APPLIED WITH JAW-TYPE PULLERS OR BI-DIRECTIONAL PULLERS.

CONTACT US FOR A COMPLETE LIST OF ALL AVAILABLE SIZES AND SETS.

SHAFT PROTECTOR SET (SET OF 6 SIZES FROM 5/8" TO 1-1/2")

## PULLERS - PUSH / PULL



VERSATILE DESIGN CAPABLE OF PUSH OR PULL APPLICATIONS DEPENDING ON THE SET UP.

10 TON / 17.5 TON / 30 TON MODELS AVAILABLE.

PART #	CAPACITY (TONNAGE)	SPREAD (IN.)	REACH (IN.)	SCREW SIZE	DIST. NET	MSRP
PWT927	10	2.13 - 7.25	8.25	3/4 - 16 X 12.00	<b>\$388.90</b>	\$486.12
PWT938	17.5	3.13 - 11.75	11.13	1 - 14 X 13.25	<b>\$929.16</b>	\$1,161.46
PWT939	30	7.00 - 16.25	10.5	1-1/2 - 12 X 17.25	<b>\$1,626.84</b>	\$2,033.55

## HIGH TONNAGE / RAIL JACKS



POWER TEAM OFFERS A RANGE OF HIGH TONNAGE, PORTABLE JACKS FOR MAINTENANCE OF RAIL WHEELS AND MANY OTHER HEAVY EQUIPMENT MAINTENANCE APPLICATIONS.

WE ALSO OFFER A COMPLETE RANGE OF CRIBBING BLOCKS AND EXTENSION ACCESSORIES FOR THIS EQUIPMENT.

CONTACT US FOR ASSISTANCE IN SELECTING THE BEST PRODUCT FOR YOUR APPLICATION.

## POSILOCK PULLERS - MANUAL



POSILOCK MECHANICAL PULLERS OFFER THE ULTIMATE IN PORTABILITY AND HIGH FORCE WITH UNPARALLELED EASE OF USE.

POSILOCK'S PATENTED SAFETY CAGE GUIDES JAWS FOR FAST & EASY SET-UP, SOLID CONTACT AND SUPERIOR SAFETY.

AVAILABLE IN CAPACITIES OF 1 - 40 TONS.

PART #	CAPACITY (TONNAGE)	# OF JAWS	SPREAD (IN.)	REACH (IN.)	DIST. NET	MSRP
PWTPT103	2	3	4.5	3.00	<b>\$196.16</b>	\$245.20
PWTPT104	5	3	5	4.00	<b>\$300.34</b>	\$375.42
PWTPT106	10	3	7	6.00	<b>\$416.60</b>	\$520.75
PWTPT108	17	3	12	8.00	<b>\$505.27</b>	\$631.59
PWTPT110	20	3	15	9.67	<b>\$555.77</b>	\$694.71
PWTPT204	2	2	5	4.00	<b>\$255.77</b>	\$319.71
PWTPT206	6	2	7	6.00	<b>\$338.52</b>	\$423.15
PWTPT208	12	2	12	8.00	<b>\$405.88</b>	\$507.35
PWTPT210	14	2	15	9.67	<b>\$454.78</b>	\$568.48

## POSILOCK PULLERS - HYDRAULIC



POSILOCK HYDRAULIC PULLERS OFFER A SOLUTION WHERE MORE FORCE IS REQUIRED THAN A TYPICAL MECHANICAL PULLER IN A MORE COMPACT FORMAT.

THE HYDRAULIC CYLINDER REPLACES THE TRADITIONAL MECHANICAL CENTRE SCREW.

THE SAME POSILOCK PATENTED SAFETY CAGE GUIDES JAWS FOR FAST & EASY SET-UP, SOLID CONTACT AND SUPERIOR SAFETY.

AVAILABLE IN CAPACITIES OF 5 - 50 TONS.

PART #	CAPACITY (TONNAGE)	# OF JAWS	SPREAD (IN.)	REACH (IN.)	DIST. NET	MSRP
PWTPTPHB106	5	3	0.5 - 8	6.00	<b>\$1,847.26</b>	\$2,309.08
PWTPTPHB108	10	3	0.75 - 12	8.00	<b>\$3,043.93</b>	\$3,804.91
PWTPTPHB110	15	3	0.1.15	9.67	<b>\$4,278.70</b>	\$5,348.37
PWTPTPHB113	25	3	2.5 - 18	12.00	<b>\$6,708.75</b>	\$8,385.94
PWTPTPHB206	5	2	0.5 - 8	6.00	<b>\$1,760.07</b>	\$2,200.08
PWTPTPHB208	10	2	0.75 - 12	8.00	<b>\$2,985.71</b>	\$3,732.13
PWTPTPHB210	15	2	0.1.15	9.67	<b>\$4,193.21</b>	\$5,241.51
PWTPTPHB213	25	2	2.5 - 18	12.00	<b>\$6,516.01</b>	\$8,145.01

## POSILOCK PULLERS - SETS



POSILOCK MECHANICAL PULLER SETS OFFER A RANGE OF OUR MOST POPULAR MECHANICAL PULLERS FOR INDUSTRIAL MAINTENANCE.

5 - 20 TON KIT / 2 - 20 TON KIT AVAILABLE.

PART #	DESCRIPTION	CAPACITY (TONNAGE)	DIST. NET	MSRP
PWTPTPM4	SET, PULLER 5 TO 20 TON POSILOCK	5 / 20	<b>\$1,522.89</b>	\$1,903.61
PWTPTPM5	SET, PULLER 2 TO 20 TON POSILOCK	2 / 20	<b>\$1,709.70</b>	\$2,137.13

## POSILOCK HYDRAULIC BENCH VISE - 5 TON CAPACITY



THE POSILOCK HYDRAULIC BENCH VISE OFFERS THE ULTIMATE SOLUTION IN CLAMPING FORCE.

A HANDS-FREE BENCH VISE WITH 5 TONS OF CLAMPING FORCE, WHEN NEEDED, CONTROLLED BY A POWER TEAM PA6 AIR/HYDRAULIC FOOT PUMP.

VISES CAN BE PURCHASED AS A STAND ALONE VISE / A BASIC KIT WITH THE VISE AND ACCESSORIES BUT NO PA6 PUMP / AND THE DELUXE VERSION WHICH INCLUDES EVERYTHING IN THE ACCOMPANYING PHOTO INCLUDING THE PA6 PUMP AND ACCESSORIES)

PART #	INCLUDED	DIST. NET	MSRP
PWTPTPHV859	VISE ONLY	<b>\$1,723.49</b>	\$2,154.36
PWTPTPHV859SPX	VISE, HOSE & FITTINGS - NO PUMP	<b>\$2,092.67</b>	\$2,615.84
PWTPTPHV859ASPX	VISE, PA6 PUMP AND ACCESSORIES	<b>\$3,323.66</b>	\$4,154.57

## PULLERS - CART MOUNTED AND ROLLER BEARING PULLERS (55-200 TON)



POWER TEAM AND POSILOCK HIGH TONNAGE CART MOUNTED PULLERS OFFER A RANGE OF PRODUCTS FOR ALL HEAVY EQUIPMENT MAINTENANCE AND INDUSTRIAL NEEDS.

FROM 55 - 200 TON, WE OFFER MANY UNIQUE PRODUCTS THAT ARE IDEAL FOR APPLICATIONS IN MINING, PULP & PAPER, RAIL AND MUCH MORE.

CONTACT US FOR ASSISTANCE IN SELECTING THE CORRECT PULLER FOR YOUR APPLICATION.

# BSiDS



CANADIAN  
DOLLAR  
BILLING



SHIPPED  
FROM  
ONTARIO



PRE PAID  
FREIGHT ON  
\$800 ORDERS



YOU CAN  
MIX & MATCH  
PRODUCTS

 HYDRAULIC  
TECHNOLOGIES

 POWER TEAM

 BOLTING SYSTEMS

 POSI LOCK

 CHANNEL LOCK

 DURABULL

 Chicago  
Pneumatic

 KOMELON

 DEWALT

 STANLEY

 CGW  
ADHESIVES

 Eklind

 FEIN

 MECHTOOLS

 MEGAPRO<sup>®</sup>  
EVERY BIT BETTER<sup>®</sup>

 ABC  
HAMMERS<sup>®</sup>

 LENCO

 ZIRCON