

KAREN WELSH





Born in Reigate, Surrey, January 1962.

Karen Welsh is a landscape painter based in Salisbury, Wiltshire.

Karen's career started as a signwriter and commercial artist beginning with an apprenticeship in her father's business in 1980, at 18 years old. As well as an signwriter, Karen's father, was also an artist interested in life drawing and the landscape. The working day was often interrupted with an excursion into the countryside to paint the landscape or a life drawing session. This is where her love for landscape painting was established.

After completing her apprenticeship in 1982, Karen set up her own business producing traditional signs and pictorial art. The art of colour mixing and painting in large scale has influenced her today.

Painting has been a constant throughout her life, moving away from her business in 2008, gave her the opportunity to concentrate wholly on her practice every day.



Passing through Wiltshire, towards the West Country for her new home, saw Karen falling for the large open spaces with big skies, chalk hills and wide valleys covered with hardy grasslands. She found the landscape surrounding Salisbury Plain unique and special. This place, provided the inspiration she needed to work towards making the paintings she creates today.

Finding this way of painting has found Karen drawn to areas such as the moors of Devon and Cornwall, the Dales and many other beautiful landscapes of Britain.

KAREN WELSH

# Artist Statement

Looking at my paintings will find you are usually viewing the landscape from a high point. The surprise of making my way upwards and finding myself on top of a hill with the vast, never-ending landscape laid out in front of me is wonderful. Being on top of the world is what I want to capture. The idea of travelling through the landscape to a place of positivity and happiness is evident in my work.

I want to focus on the land, which is why the skies in my works are understated to give the landscape a centre stage. The paintings are influenced by the forms of the land. My interest of the effect ancient landmarks have on the shapes adds to the abstraction of a piece.

As well as acrylic paint, I use charcoal to add structure and interesting marks. I use a limited palette of colours which keeps the paintings clean and fresh.

Until 2019 my work was representational painting with a focus on texture and colours. I wanted to express the feel of the landscape and the way it forms itself from the ground, to push the contrast between the land and the sky.

The colours were taken to the limits, highlighted by spots of blue and pink in response to the reflections of the sky, contrasting other objects against each other. I enhanced the textures in the foreground with impasto to create the feel of freshly cut straw in the field under foot, for example.



My studio practice includes listening to podcasts on art history and the art market. I enjoy hearing interviews and art talks by leading artists. The Abstract Expressionist movement has been the main influence to moving away from the figurative.

I mark the canvas with charcoal, play with colour, finding shape and form to work with. I don't have a preconceived idea of the finished painting. I layer and evolve the painting using instinct, trial and error. I want to capture the feel of the subject and provoke a sense of place.

Every painting fills me with excitement and freedom. I love every one of them. There are endless possibilities to build my work to achieve the optimal outcome.

*“To me a new canvas is like a brand new day”*



## After the Rain

£995

Original painting

Acrylic and charcoal on canvas

Painting size 40 x 40cm

Overall size with deluxe frame approximately 63 x 63cm

The landscape below unfolds in flattened planes of colour. Golden yellows, olive greens and earthy orange, layered and textured. The rolling chalk downs are suggested through flowing curves, almost rhythmic, like waves frozen in time.

0% Finance Available: Ask gallery for details.





## Across the Open Fields

£2995

Original painting

Acrylic and charcoal on canvas

Painting size 112 x 142cm

Overall size with tray frame approximately 116 x 146cm

This is a large painting. A landscape of colours, shapes and texture, working together for strong visual impact.

0% Finance Available: Ask gallery for details



## Hedgerow - (Triptych)

£6495

Original painting

Acrylic and charcoal on canvas

Overall size with deluxe frame approximately 143 x 309cm size when hung with a 10cm gap between each panel, but can be spaced wider to create an even longer statement artwork.

This triptych is made up of three canvasses 100 x 60, 120 x 100 and 100 x 60cm

Starting with gestural marks in charcoal, the painting was created after seeing a broken fence at the edge of an arable field. Brambles were growing through it.

I wanted to incorporate the idea of the surrounding colours in an abstract way.

0% Finance Available: Ask gallery for details.



## Catch the Sky - (Triptych)

£6495

Original painting

Acrylic and charcoal on canvas

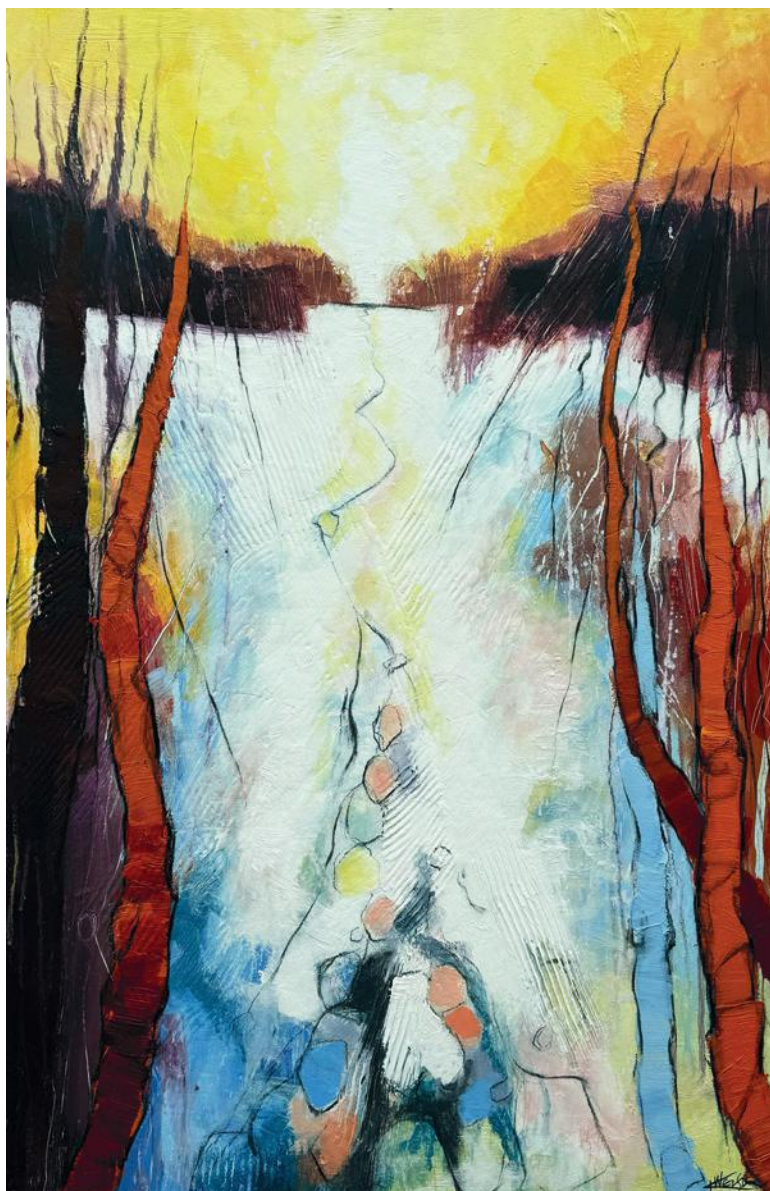
Overall size with deluxe frame approximately 143 x 309cm size when hung with a 10cm gap between each panel, but can be spaced wider to create an even longer statement artwork.

This triptych is made up of three canvasses 100 x 60, 120 x 100 and 100 x 60cm

Travelling up through the landscape towards the horizon, where the sky and the landscape become one, as if the land has caught the sky.

0% Finance Available: Ask gallery for details.





## First Snow I

£1495

Original painting

Acrylic and charcoal on canvas

Painting size 91 x 61cm

Overall size with deluxe frame approximately 114 x 84cm

The change in season from summer to autumn makes me imagine the perfect snowy winter.

0% Finance Available: Ask gallery for details.





## First Snow II

£1495

Original painting

Acrylic and charcoal on canvas

Painting size 76 x 76cm

Overall size with deluxe frame approximately 100 x 100cm

0% Finance Available: Ask gallery for details.



## Summertime - (Triptych)

£3995

Original painting

Acrylic and charcoal on canvas

Overall size with deluxe frame approximately 123 x 229cm size when hung with a 10cm gap between each panel, but can be spaced wider to create an even longer statement artwork.

This triptych is made up of three canvasses 100 x 30, 100 x 80 and 100 x 30cm

Inspired by Joan Mitchell, mid 20th century abstract expressionist painter of the New York school. Yellows deepening into orange.

0% Finance Available: Ask gallery for details.





## Golden Way - (Triptych)

£3995

Original Painting

Acrylic and charcoal on canvas

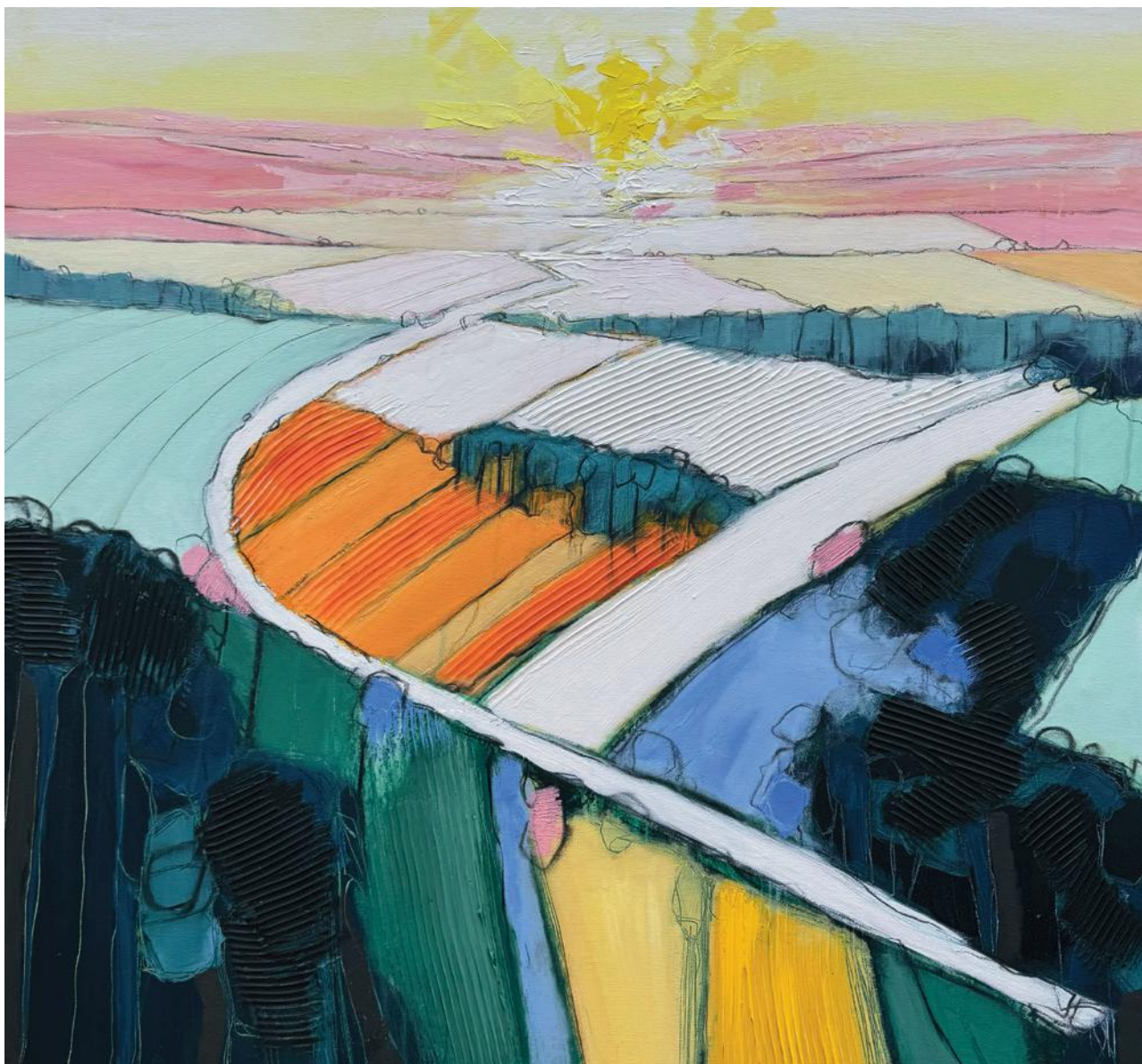
Overall size with deluxe frame approximately 138 x 354cm size when hung with a 10cm gap between each panel, but can be spaced wider to create an even longer statement artwork.

This triptych is made up of three canvasses 100 x 30, 100 x 80, and 100 x 30cm

This is one of five of the large, impressive triptychs in the collection of works.

This set of paintings belong with two smaller paintings, 'Follow the Edge' and 'Anticipate the Walk'

0% Finance Available: Ask gallery for details.



## The Start of A New Day

£1195

Original painting

Acrylic and charcoal on canvas

Painting size 76 x 76cm

Overall size with tray frame approximately 80 x 80cm

With the sun rising at the start of a new day, turning the landscape pink.  
The road leads you to the horizon spreading the sun's light across the land.

0% Finance Available: Ask gallery for details.





## Goldfinch

£1195

Original painting

Acrylic and charcoal on canvas

Painting size 76 x 76cm

Overall size with tray frame approximately 80 x 80cm

Using the same idea 'As The Leaves Fall' the colours of the Goldfinch were the inspiration for this piece.

0% Finance Available: Ask gallery for details.



## As the Leaves Fall and the Pheasants Play in the Autumn Sun

£1195

Original painting

Acrylic and charcoal on canvas

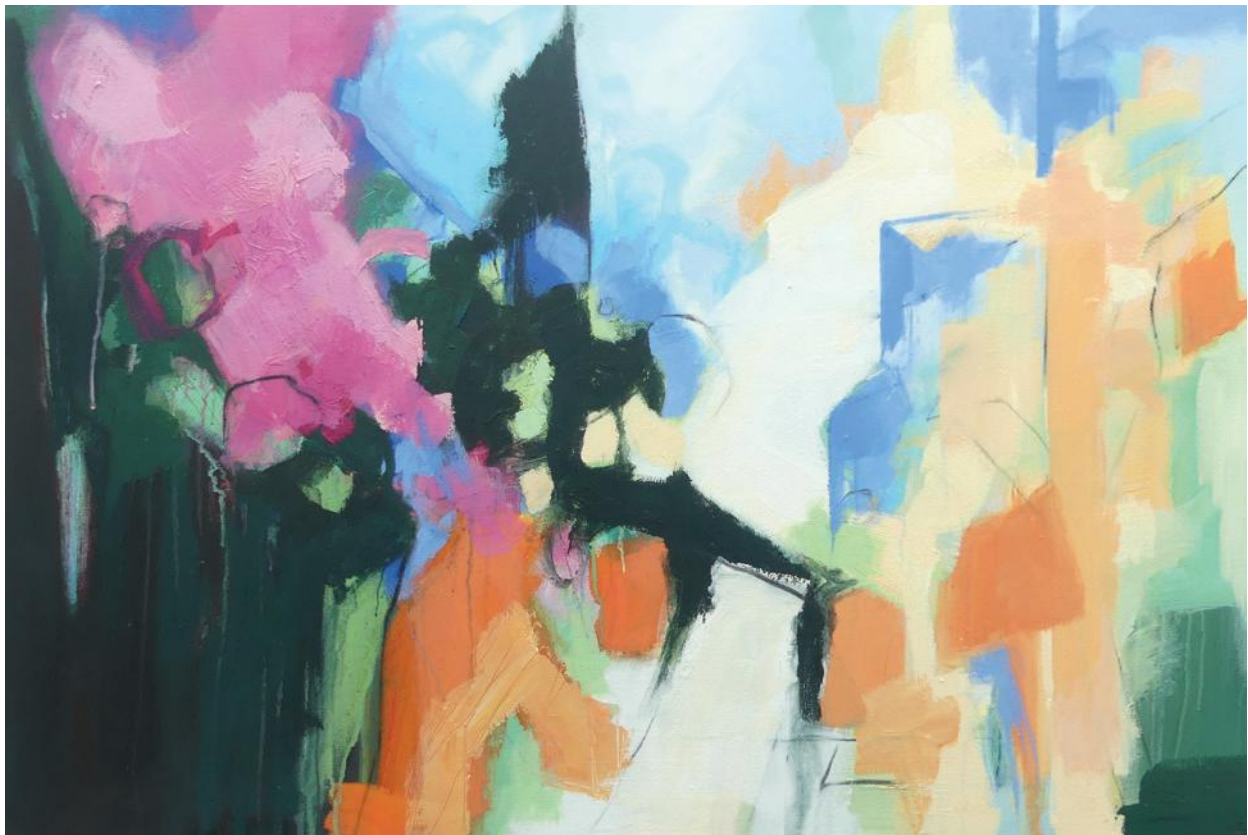
Painting size 61 x 91cm

Overall size with tray frame approximately 65 x 95cm

This painting captures the essence of the pheasant, its colours used in layers from the intense dark of the birds body through to the light of the sun shimmering through the falling leaves.

0% Finance Available: Ask gallery for details.





## In the Med

£1195

Original painting

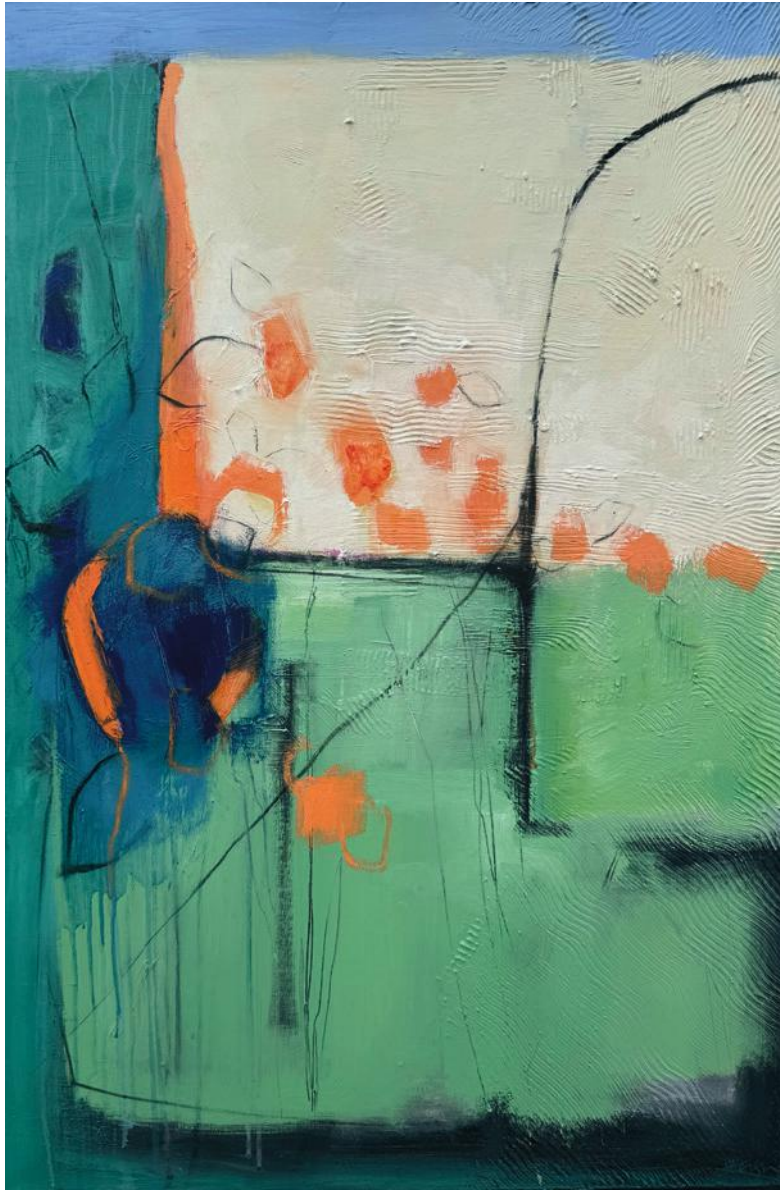
Acrylic and charcoal on canvas

Painting size 61 x 91cm

Overall size with tray frame approximately 65 x 95cm

The sun beats down and lights up the cobbled street. The coloured buildings reflecting the light, the terracotta pots and pink geraniums are placed to create this abstract interpretation of the place.

0% Finance Available: Ask gallery for details.



## Orange Dahlias

£1195

Original painting

Acrylic and charcoal on canvas

Painting size 91 x 61cm

Overall size with tray frame approximately 95 x 65cm

A wrought iron arch sits off right, the dahlias amble across the garden.  
The textures and effects created after working the layers are interesting close-up.

0% Finance Available: Ask gallery for details.





## Strawberry Field

£895

Original painting

Acrylic and charcoal on canvas

Painting size 50 x 50cm

Overall size with tray frame approximately 54 x 54cm

This painting developed by layering colour reducing the forms. The blue sky tips down through the red cooled by the dark turquoise.

0% Finance Available: Ask gallery for details.





## Orange, Green and Blue

£1195

Original painting

Acrylic and charcoal on canvas

Painting size 76 x 76cm

Overall size with tray frame approximately 80 x 80cm

A play on the landscape, dark hedgerow tumbles down the hillside giving contrast to the pinks and oranges. See the evidence of the workings on the lower layers peaking through.

0% Finance Available: Ask gallery for details.





## Wiltshire Tracks

£1495

Original painting

Acrylic and charcoal on canvas

Painting size 76 x 76cm

Overall size with deluxe frame approximately 103 x 103cm

The last of a series of paintings inspired by the Wylde Valley. The strong yellows of the spring rapeseed fields are calmed by the neutral greys, which contrast with the impression of the River Wylde.

0% Finance Available: Ask gallery for details.



## Pink and Olive

£1195

Original painting

Acrylic and charcoal on canvas

Painting size 60 x 60cm

Overall size with deluxe frame approximately 83 x 83cm

This painting works with the same colouring, apart from the deep blue that contrasts with the pink that sits on top.

0% Finance Available: Ask gallery for details.





## Walled Garden

£2495

Acrylic and charcoal on canvas

Original painting

Painting size 100 x 120cm

Overall size with deluxe frame approximately 123 x 143cm

Pinks, yellows and olive greens contained in a neutral grey.

There is an early summer outside fresh feel.

0% Finance Available: Ask gallery for details.



## Find Your Way

£495

Original painting

Acrylic and charcoal on paper

Overall size with frame approximately 49.5 x 49.5cm

Framed behind glass with a mount

A stylized and abstracted interpretation of the Wiltshire landscape. There are suggestions of the barrows and ancient landmarks dotted around the landscape.

0% Finance Available: Ask gallery for details.





## Peace Within

£1495

Original painting

Acrylic and charcoal on canvas

Painting size 76 x 76cm

Overall size with deluxe frame approximately 103 x 103cm

This was the first of the quieter paintings. The accent of orange hanging off the tip of the strong dark line is perfect.

0% Finance Available: Ask gallery for details.



## Inner Space IV

£1495

Original painting

Acrylic and charcoal on canvas

Painting size 76 x 76cm

Overall size with deluxe frame approximately 103 x 103cm

These two paintings were inspired by creating a series of small works on paper. I wanted to work in a quieter way. The colours are muted creams, greys and blues with a strong contrast of dark greys to turn your thoughts inwards.

0% Finance Available: Ask gallery for details.





## Inner Space III

£1495

Original painting

Acrylic and charcoal on canvas

Painting size 76 x 76cm

Overall size with deluxe frame approximately 103 x 103cm

0% Finance Available: Ask gallery for details.



## Hedgerow with Flowers

£1195

Original painting

Acrylic and charcoal on canvas

Painting size 60 x 60cm

Overall size with deluxe frame approximately 83 x 83cm

The dark hedgerow sits to the left whilst the willow-weed and ragwort on their long stems move in the breeze.

0% Finance Available: Ask gallery for details.





Each painting is accompanied by a signed certificate of authenticity. The certificate details the title, medium, substrate and unique catalogue number.



The paintings are finished with two coats of acrylic varnish for protection.

The substrate is 100% primed cotton canvas complete with tension wedges in each corner.

Each original is supplied ready to hang.



The tray frame that floats the canvas is a responsibly resourced softwood. It is light weight with a modern contemporary look. Finished with grey acrylic paint.



Many of the frames have been deluxe framed as above. These frames add a sense of prominence to the painting and the room it hangs in.



# Contact

## **Gallery 21**

20 Queen Street, Market Square,  
Salisbury, Wiltshire SP1 1EY

[salisbury@gallery21.co.uk](mailto:salisbury@gallery21.co.uk)

[www.gallery21.co.uk](http://www.gallery21.co.uk)

01722 672007

## **Artist - Karen Welsh**

[karen@karenwelshartist.co.uk](mailto:karen@karenwelshartist.co.uk)

[www.karenwelshartist.co.uk](http://www.karenwelshartist.co.uk)

07515 482406



A large, expressive teal brushstroke graphic that sweeps across the page, partially obscuring the text.

KAREN WELSH



Scan to view all available works

07515 482 406

[www.karenwelshartist.co.uk](http://www.karenwelshartist.co.uk)



karenwelshartist



@KarenWelsh - Artist