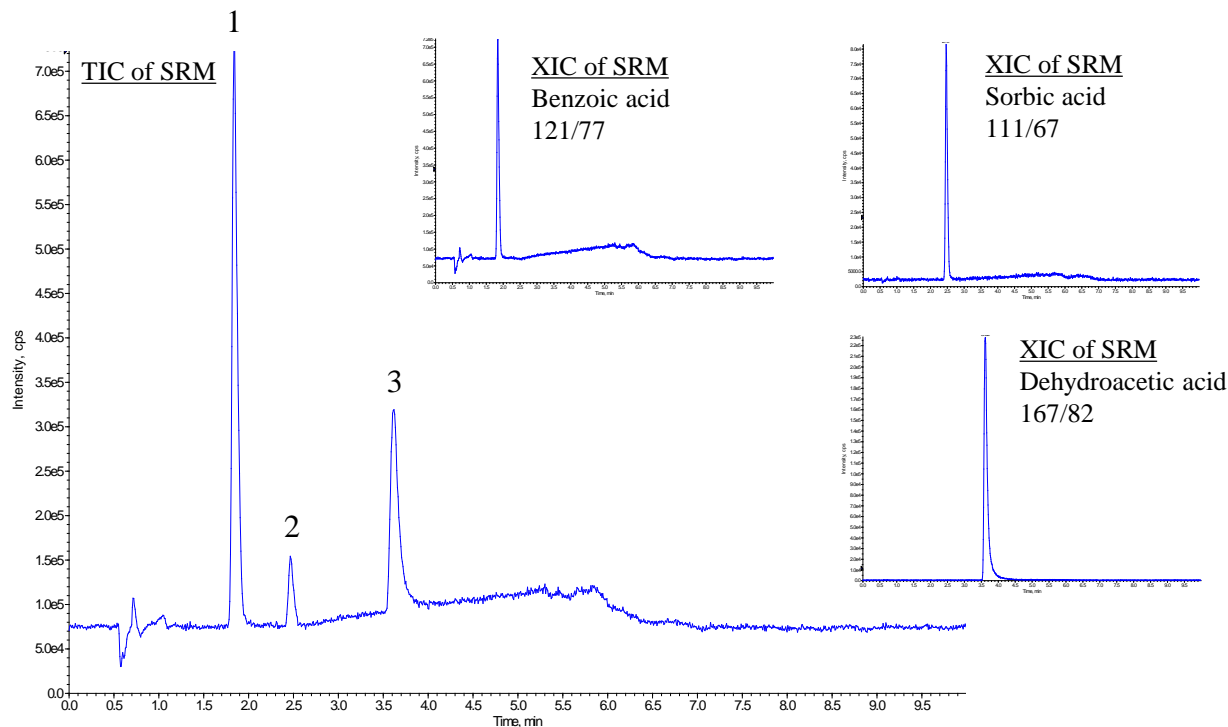


Analysis of Benzoic acid, Sorbic acid and Dehydroacetic acid



Conditions

System : ExionLC AD (SCIEX)
 QTRAP 6500+ (SCIEX)

Column : InertSustain AQ-C18 (GL Sciences Inc.)
 (1.9 μ m, 100 x 2.1 mm I.D.)

Column Cat. No. : 5020-89939

Eluent : A) 5 mM $\text{CH}_3\text{COONH}_4$ in ($\text{CH}_3\text{CN}/\text{H}_2\text{O} = 90/10, v/v$)
 B) 5 mM $\text{CH}_3\text{COONH}_4$ in H_2O

Analyte:
 1. Benzoic acid
 2. Sorbic acid
 3. Dehydroacetic acid
 (0.5 mg/L each in CH_3OH)

| Time (min) | A (vol %) | B (vol %) |
|------------|-----------|-----------|
| 0.0 | 5 | 95 |
| 1.5 | 5 | 95 |
| 4.5 | 30 | 70 |
| 5.0 | 30 | 70 |
| 5.1 | 5 | 95 |
| 10.0 | 5 | 95 |

Flow Rate : 0.4 mL/min

Col. Temp. : 40 °C

Detection : MS/MS (ESI, Negative)
 CUR CAD IS TEM GS1 GS2
 20 8 -4500 600 40 80

Injection Vol. : 2 μ L

Sample : Standard