

Winchelsea Star

Price \$1

Your Weekly Community Newspaper

Since 1977

Vol 48 Ed 08

Tuesday 4 March 2025

winchelseastar.org.au



Winchelsea opens new community swimming pool

**Open 3pm-7pm Monday to Friday, 10am-5pm weekends
until 30 March 2025**

Formalities fused with fun as community members gathered for Surf Coast Shire Council's ceremonial opening of the new Winchelsea Pool.

Winchelsea Primary School pupils Olivia, Ruby, Alex and Oakley provided a highlight swimming the length of the new 25m pool in a race, with the winner given the privilege of cutting the ceremonial ribbon. Oakley took the honours in a tight finish.

Following a Welcome to Wadawurrung Country by Ash Skinner, Mayor Mike Bodsworth hailed the start of a new era for Winchelsea community and paid tribute to the many dedicated volunteers who underpinned building and maintenance of the town's former pool across many decades.

An \$8.9 million redevelopment, fully funded by Council, has provided new 25m and leisure pools with heated water, splash park, pavilion, barbecue and shelters for community to enjoy for decades to come.

Winchelsea ward councillors Adrian Schonfelder and Tony Phelps joined Mayor Bodsworth for unveiling of a plaque, and former long-time chief lifeguard Trevor Mildenhall shared insights from his years poolside.

For information, visit surfcoast.vic.gov.au/WinchelseaPool



GRANTS

NOW OPEN

Open on 1 March
closes on 31 March

- Community Initiative Grants up to **\$5,000**
- Natural Environment Grants up to **\$8,000**

Scan the **QR code** to find out more or call grants team on **5261 0600** to discuss your idea and ask any questions.



surfcoast.vic.gov.au/Grants



Community Satisfaction Survey 2025

On Now



Random phone interviews with 600 Surf Coast Shire ratepayers are taking place until mid-March for the Local Government Community Satisfaction Survey.

The annual survey which takes about seven minutes to complete provides us with feedback to help understand community perceptions about council, and identify improvement opportunities.

The Local Government Community Satisfaction Survey is carried out by the Victorian Government.



NATURAL GAS CONNECTIONS

**M. & L DRAYTON
PLUMBING SERVICES**

YOUR LOCAL LICENSED

- PLUMBERS (24356)
- GAS FITTERS
- GAS CONVERTERS
- CARBON MONOXIDE TESTING

MARK 0428 520 142

R.A.K. DAVIS & SONS

CARTAGE CONTRACTORS

WINCHELSEA

SUPPLIER OF ALL QUARRY MATERIALS, TRUCK HIRE

CARTAGE OF GRAIN, LIME, GYPSUM & SUPER

LANDSCAPE & GARDEN SUPPLIES

56 WILLIS ST, WINCHELSEA

Ph – 5267 2094

Ryan – 0438 672 281

email: rakdavissons@gmail.com



Family home in Winchelsea tragically lost to fire

Large response from emergency services and local community

Winchelsea Captain, Winchelsea Fire Brigade

This week Winchelsea Fire Brigade responded to a devastating structure fire on Willis Street following reports of a roof on fire. Upon arrival, it was discovered that the fire had spread quickly, engulfing most of the property, making only an external firefighting attack possible.

The severity of the blaze, fueled by the summer heat and the size of the residence, a request was called early for support from surrounding brigades.

Sadly, the occupants suffered a total loss, a harsh reality that weighs heavily on all first responders. Beyond the physical demands of firefighting, it's incredibly difficult knowing individuals have lost their home and possessions.

We extend our gratitude to Birregurra, Colac, District 7 Rehab Unit, Geelong City BA Support, Gnawarre, Grovedale, Hazmat 61, Modewarre, Pumper 64, Wurdale, Winchelsea, Victoria Police, and Ambulance Victoria for their invaluable assistance and unwavering support.

If you are able and willing to assist the affected family during this difficult time, the community has established a **GoFundMe** page. Any contribution, regardless of the amount, will be greatly appreciated.

https://www.gofundme.com/f/4y5wt2-mcculloch-family?attribution_id=sl:aa0b144c-cf21-434a-a71d-ceb534774717&lang=en_AU&utm_campaign=man_sharesheet_dash&utm_content=amp13_c-amp14_c&utm_medium=customer&utm_source=copy_link



THANK-YOU

To Kenty's Bakery, we extend our deepest gratitude for providing Lunch to approximately 40 firefighters and emergency service personnel on the fireground today, and for doing so with such incredibly short notice. Your generosity fueled our team and helped us continue our work.

And to the anonymous community members who gifted our station with much-needed slabs of water, dropped softdrink and chips to crews on scene: we are sincerely thankful. While we regret not getting your name to thank you in person, please know that your contribution is invaluable. On days like today, each firefighter can easily consume five bottles of water, so your thoughtful donation will ensure we're well-hydrated and ready to respond. Thank you both for your unwavering support of our fire service!

Winchelsea Fire Brigade

21 Harding Street, Winchelsea, VIC, Australia, Victoria
<https://www.facebook.com/winchelseafirebrigade>

FIRE RESTRICTIONS ARE STILL IN PLACE

No burning off until they have been lifted

While it is encouraging to see people maintaining their properties and cleaning up to reduce fire risk, doing it in the fire danger period is not the right time.

If CFA crews are called to an illegal burn off you can expect to have Victoria Police pay you a visit too.

Fire Danger Periods typically remain in place until the fire danger lessens, which can be as late as May.



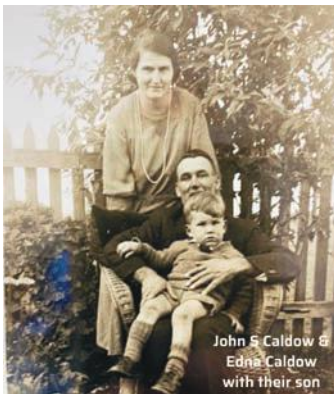
Connections Over Generations: A Hesse Story

Hesse Rural Health

Hesse Rural Health has long been a cornerstone of the Winchelsea community, providing essential healthcare services and fostering deep connections across generations.

One such story exemplifying this enduring relationship is that of the Caldow family, a local farming family whose contributions to Hesse date back decades.

A current resident at Chelsea Lodge, John W Caldow (Jnr) has a lifelong connection to Hesse that spans multiple generations. His father, John S Caldow (Snr), played a pivotal role in the establishment of the Winchelsea Hospital in the 1940s, working alongside fellow community members to bring much-needed healthcare services to the town. After years of dedication, the Gosney Street Hospital officially opened its doors in 1956, with John S Caldow (Snr) serving on the Board of Directors and later assuming the role of chairman.



The family's contributions did not end there. The Caldow family also purchased the current Winchelsea Community Health building in Gosney Street as their retirement home—a residence affectionately known within the family as "Grandma's house." Following in his father's footsteps, John W Caldow (Jnr) also dedicated time to the betterment of local healthcare, serving as a Winchelsea Hospital committee member for 13 years throughout the 1980s and 1990s.

At the age of 85, John W Caldow (Jnr) was diagnosed with Parkinson's disease, requiring additional support to maintain his independence. In 2023, he began accessing home care services through Hesse's In-Home Support Team under a Home Care Package. John has now transitioned into Chelsea Lodge at Hesse's Residential Aged Care facility in Gosney Street.

The story of the Caldow family reflects the long-standing relationship between Hesse and the local community. Their history of service, care, and connection embodies the values of Hesse's person-centred approach to healthcare.

Hesse continues to honour the experiences of its consumers by sharing their stories with the Board of Directors and the Consumer Advisory Committee, ensuring that decisions reflect the needs and values of the people they serve. This commitment to listening and learning reinforces Hesse's role as an integral part of the Winchelsea community—a connection that remains strong across generations.

One Last Lap for RSPCA's Million Paws Walk!



Geelong Million Paws Walk
Oval 3 Eastern Park
Sunday 25 May 2025. 8.30am - 12.30pm

RSPCA's Million Paws Walk will return to communities across Victoria in 2025 to raise vital funds for animals across Australia on Sunday, 25 May. However after more than 30 fantastic years, this year will be the last lap nationally for Million Paws Walk.

RSPCA Victoria CEO Dr Liz Walker explained the funds raised at every walk would help end animal cruelty, and this final walk will be one to remember. "Everyone has such a fantastic time at Million Paws Walk, and we're very excited to see all the amazing dogs with their families and friends again as we send the event off in style," Dr Walker said.

"We appreciate some people may be disappointed this will be the final lap for Million Paws Walk. However the logistical effort involved in running events on this scale, continually increasing event costs, and the cost-of-living pressures on supporters, means the event is no longer able to provide what it once could – maximum funding to help end cruelty to animals.

"While this will be the final walk, the money raised will help us care for the thousands of animals coming into our shelter every year, including those rescued by our Inspectors. The cost of caring for the animals rescued by our Inspectorate is increasing every year, and your support is more vital than ever."

More than 6,000 people and around 9,000 dogs are expected to participate in six Million Paws Walk events across Victoria this year and the RSPCA is looking forward to celebrating with its supporters and finding new opportunities for the public to help animals in need.

Locals interested in volunteering or businesses interested in running a vendor stall at this year's Melbourne Million Paws Walk can register at MPW@rspcavic.org.au or 03 9224 2564.

Registrations for participants at Million Paws Walk are now open, with a 'barking-mad' discount of 60% until 7 April.

Head to millionpawswalk.com.au to register for your local walk and start fundraising today!

ADDRESS	DATE	TIMES
Melbourne Pelican Lawn, Albert Park Lake, Albert Park	Sunday 25 May 2025 ¹	10:00am – 2:30pm
Geelong Oval 3 Eastern Park	Sunday 25 May 2025	8:30am – 12:30pm





198(4) ensemble cast
Image courtesy of Glen Barton.

War is Peace, Ignorance is Strength, Freedom is ...

Skin of our Teeth Productions presents George Orwell's "198(4)"

Award winning Skin of our Teeth Productions is thrilled to announce its first production for 2025 – 198(4) – written by George Orwell, adapted by Dr Christine Davey and directed by Glen Barton.

This much-anticipated production will premiere on 21 February in Geelong and be staged in Bendigo, Yea, Port Fairy and Castlemaine.

Set in a dystopian world where government surveillance, manipulation of truth, and absolute power reign, Orwell's 198(4) explores the struggle of the individual against the oppressive forces of the Party. This powerful, thought-provoking play paints a chilling portrait of a society under constant scrutiny, where free will and thought are suffocated in the name of control.

The cast is led by a talented ensemble of actors (Anastasia Sidorova, Lachie Errey, Rachel Edmonds, Mary Steuten, Damian Ng, Joanna Lusty and Christine Davey) who bring a mix of energy and vulnerability to the stage. Each member of the cast plays multiple roles, offering a dynamic portrayal of the multifaceted characters that populate the dystopian world.

198(4) is more than just a political commentary; it is a human story about the search for truth, love, hope and individuality in the face of overwhelming oppression. "This is a story about the power of the human spirit, even in the darkest of times," says Barton. "It's a story that calls us to question the forces that shape our lives and our perceptions."

Skin of our Teeth Productions is in its tenth year and has built a reputation for bringing bold and thought-provoking works to the stage. 198(4) is sure to be one of their most compelling productions to date.

Tickets are available through TryBooking:
<https://www.trybooking.com/events/landing/1298654>

Tour details:

15 March – Yea Butter Factory, Yea

22 March – Engine Room, Bendigo

29 March – Lecture Hall, Port Fairy

4 April – Castlemaine Fringe Festival, Castlemaine

Mother's Day Classic aims for another record breaker to boost women's health and save lives

Uniting for breast and ovarian cancer research

Australia's most loved national fun run and walk, the Mother's Day Classic (MDC), is primed for another record-breaking year, with organisers announcing a renewed commitment to funding research to reduce deaths and improve survival for breast and ovarian cancer.

Last Mother's Day, more than 85,000 gathered for the Classic in 75 locations nationally. Those numbers are on track to be exceeded in 2025 with early registrations at record levels.



Ms Lawless said the 28th Mother's Day Classic, founded by Women in Super, will build on the relationship with the Ovarian Cancer Research Foundation (OCRF), which joined longstanding beneficiary National Breast Cancer Foundation (NBCF) as part of an extended MDC family in 2024.

"Events like the Mother's Day Classic and the public support of medical research have facilitated a significant improvement in survival rates for more than 21,000 Australians diagnosed each year with breast cancer.

"The MDC community has shown that it can and wants to strive for more, to also improve the outcomes for women with ovarian cancer, a disease for which there is still no early detection test.

Every day in Australia 63 people are diagnosed with breast or ovarian cancer. Every day 12 people die from those two diseases. The MDC provides not only the hope that the day will come when no more lives will be taken, but the means to help fast-track that outcome.

Registrations are now open for the 28th Mother's Day Classic at mothersdayclassic.com.au.

WHERE	WHEN	DISTANCES AND TIMES	
Colac Botanic Gardens	Sunday 11th May 2025	WALK 3.3km - 9:05am	RUN 3.3km - 9:00am
Geelong Oval 3 Eastern Park	Sunday 11th May 2025	WALK 4km - 8:50am EMBRACE & HONOUR 4km - 9:00am 8km - 9:10am	RUN 8km - 7:50am 4km - 8:00am

In the Embrace & Honour walks participants will be invited to observe a minute of silence at the start line to embrace and honour those touched by breast or ovarian cancer.



Winchelsea Star

Your Weekly Community Newspaper

Since 1977



Winchelsea
Star



Winchelsea Star

Production Meeting

Saturday 29 March 2025 9-10am

Everyone is invited to come along to a monthly meeting - with coffee of course - on the last Saturday of each month @ Sweet Thyme, Winchelsea.

Your comments or suggestions, feedback, ideas for stories or coming events are welcome - or simply to say Hi!

This Week's Winchelsea Star

Editor - Yvonne Stevens

Designer - Susan Corby



send your stories
news@winchelseastar.org.au

LOCAL NEWS and ARTICLES WELCOME

Include name and address of the sender
Email news@winchelseastar.org.au
Leave hard copy at IGA Supermarket

DEADLINE 5pm Fridays

4pm Sundays - hard copy articles left at IGA

6pm Sundays - sports results and weekend events

EDITOR 5273 0295 Leave a message

ADVERTISING

advertising@winchelseastar.org.au 5273 0294

free digital subscription

www.winchelseastar.org.au

JOIN US ON FACEBOOK

facebook.com/TheWinchelseaStar

production

Editors: Cerrie Forgan, Yvonne Stevens, Judy Cameron

Advertising: Sasha Gauntlett, Neil McInnes

Design: Susan Corby, Tony Phelps

Printed by: Winchelsea Community House

Website by: Winch Websites

committee

President: president@winchelseastar.org.au
Neil McInnes

Treasurer: treasurer@winchelseastar.org.au
Cathy Cheadle

Secretary: secretary@winchelseastar.org.au
Tony Phelps

Members: Mick O'Mara, Linda Carter, Susan Corby
Sasha Gauntlett, Judy Cameron,
Yvonne Stevens, Cerrie Forgan



© Winchelsea Star Org. Inc. All rights reserved
Winchelsea Star Organisation Inc.
Reg. No. A0053999F ABN 75 941 529 279
winchelseastar.org.au PO Box 5 Winchelsea 3241

Views expressed are not necessarily those of the Winchelsea Star or Committee. The Winchelsea Star reserves the right to edit or not publish any article.



Mussels in the Barwon River

Mick O'Mara

Our river is beautiful!

Last Monday I took my dog for a swim in the Barwon at the ford below the swimming pool. I was amazed to find a large number of fresh-water mussels in the shallow water close to the bank.

I hadn't seen a fresh- water mussel since my childhood when I found one in the stream that flowed through my grandfather's farm. Back in those days I was very familiar with salt-water mussels so I assumed you could eat their fresh water cousins. I tried one. It was simply awful. A bit like eating a mud sandwich.

However, back to our Barwon River mussels. I scraped one out and took it around to show Stewart Mathison who is one of the leaders of our Barwon River-care group. Stewart hadn't seen one either and asked me to bring it to the Upper Barwon Landcare meeting on Friday night.



I was agreeable and dropped the mussel on my ute seat. Then, stupidly, I forgot about it until Thursday. When I rediscovered it, what could I do? Keep it for another day but have it die because of lack of water? I went back to the caravan park ford again and there were still heaps of mussels there. So, in my wisdom, I decided to throw mine back into the river and get another one next day before the Landcare meeting.

The problem was that when I went back the next day there were no mussels at the caravan park ford. Where had they gone? Could the mussel I had thrown back in spread the news that I was coming to get one of them so they all moved on or, had some kids who were playing at the ford on Thursday evening discovered them and collected the lot?

Some one said to me that mussels are very good swimmers so I think they moved on. However it does indicate that our section of the Barwon is in very good condition despite the lack of rain. Please, be on watch for mussel colonies as you walk along the river. The River-care group would love to hear about it. Cost-of-living continues to bite animals in South-West

As the Team Leader for RSPCA Victoria's Inspectorate South-West region, every day my team of seven Inspectors and I are often on the road around Melbourne's inner-west, out to Warrnambool and Portland and everywhere in between.

Out on the road, we're seeing firsthand how the cost-of-living crisis continues to impact pet owners and their ability to care for their pets.

People who were already struggling have been significantly impacted and now find themselves unable to provide basic care to their pets such as adequate food, vaccinations, parasite prevention treatments, and regular vet checks.

RSPCA Victoria Inspector's Open Letter to the South-West Region

Shannon Walsh, RSPCA Inspectorate Team Leader SW

Many of the cruelty cases we've seen relate to welfare issues that can be prevented early on with simple and effective treatments.

Those struggling to care for their pets are certainly not alone. Heartbreakingly, RSPCA Victoria receives an average of almost 16 calls every day from people wanting to surrender their pets for a variety of reasons, including financial difficulties. Where we can, we have helped struggling pet owners by providing flea and worming treatments, emergency food, and occasionally shelter.

Despite this work, RSPCA Victoria received 1,205 cruelty reports from the South-West region, resulting in the rescue of 200 animals.



Last financial year, 477 animals came into our care, and I'm hopeful we won't repeat this total again by the end of June.

Taking your pets into account when making plans helps prevent welfare issues.

By budgeting for their care, staying updated on hay and feed market trends, and preparing for emergencies such as bushfires and storms, you can greatly improve their safety and well-being.

The people across the South-West region are our eyes and ears when it comes to animal cruelty, and we urge anyone with concerns to report it to RSPCA Victoria by calling (03) 9224-2222 or online at rspcavic.org/cruelty-report.

The community's support doesn't stop there.

It cost approximately \$10.7 million to operate the RSPCA Victoria Inspectorate in the last financial year, with community donations, fundraisers, and events providing the majority of our funding – thank you.



If you are one of many who are struggling to care for your pets, please don't be afraid to reach out for help, whether it be to us, to other community-based programs, to your local council, or to other groups who may be able to provide support.

Together, we can end animal cruelty.





Winchelsea Star COMMUNITY NOTICEBOARD

email editor@winchelseastar.org.au or leave at Winchelsea IGA

WINCHELSEA TENNIS CLUB

JUNIOR COACHING

Mondays from 3.30pm
with experienced Nicole Mullen, \$10

SOCIAL

TWILIGHT TENNIS

Monday evenings from 6.00pm.
All Welcome!

RUNNING GROUP

Did you know Winchelsea has a small run group? We all start our watches but we're not worried about personal best. Its more of a social run, jog and chat. We wait for slower runners and walk when one of us needs a rest. The aim is 10k with the option of 8 or 5k it's up to you. To finish off we have a coffee at La Hoot .
Join us each Sunday morning 8am .
Meet at La Hoot .

LIONS CLUB

Environmentally friendly
compressed paper bricks for your fire.
Save on the rising cost of wood.
Pack 4 bricks \$5 - Roll small rolls \$2
Contact Alan 0476 475 422

WINCHELSEA PICKLEBALL

Winchelsea Leisure Time Centre
Wed 7-830pm or Thurs 10-11.30am.
All equipment supplied,
wear suitable footwear.
Lesley Mathison 0438 672 197

CUBS AND JOEYS

For information, or to get involved,
contact Marie McPadden – 0409330147
or mcpadden630@bigpond.com



BRIDGE

Social Bridge is played
TUESDAYS 10 AM - 12 NOON
Senior Citizens Centre
36 Harding Street Winchelsea
New players always welcome
Elaine Atkinson 0458 009 616

WINCHELSEA GIRL GUIDES WELCOMES GIRLS 6-15 YRS

Mondays, 4.30pm-6pm at St John's Catholic Church Winchelsea during school term.
Guiding provides fun, friendship, and adventure. Developing teamwork, and leadership skills, whilst girls achieve goals, improve communities and grow in confidence.
If interested, girls can attend 3 FREE sessions to come along and try.
Enquiries Yvonne Orchard ph 0448 672 630 or Lily Dell Rennie ph 0428 936 441

Winchelsea Star CLASSIFIED ADS

email editor@winchelseastar.org.au or
leave at Winchelsea IGA

Notices removed after 2 weeks



FOR SALE

MAN'S WATCH AND RING DUSTIN MARTIN PHOTO

A man's watch, it's beautiful, regretful sale, also a man's gold ring, \$300 for both. They are both special to myself as they were my ex partner's who died of cancer and I gave them to him.
Very regretful sale.

Also a large picture of Dustin Martin signed by him. \$300.

Or \$500 the lot.
"Richmond Fans" Ph 52 672 954.

Posted 4/3/25

HUGE SALE DOWNSIZING
GARAGE SALE
LONG WEEKEND
MARCH SAT 8TH SUN 9TH
64 BARWON PARK ROAD
STARTING 8AM - 3PM
*NO HOLDS
*EVERYTHING MUST GO

Nicola here formally of Sweet Thyme Cafe. With Danny and I having sold the cafe, we are downsizing everything we will hit the roads full time with our caravan for a couple of years.
We will be holding a huge garage sale on the Labour Day long weekend.

Posted 4/3/25

WANTED

HOT WATER SYSTEM

ASAP an electric hot water system.
Please contact 52 672 054.

Posted 4/3/25

FOR SALE

TV Bauhn 58 inch

4K ultra HD with HDR
Price \$300
Ph 52 672 677

Posted 4/3/25

GARAGE SALE

20 McDonald Drive

Large variety of goods
Saturday March 8th. 9am-3pm

Posted 4/3/25



Joint action plan to flow from new shared vision

Corangamite CMA



CMA CEO Amber Clarke and Chair Cath Jenkins with Barwon Water Chair Jo Plummer and Managing Director Shaun Cummin.

Corangamite Catchment Management Authority and Barwon Water have struck a new 2025-2029 Partnership Agreement focusing on improving the health of catchments and waterways across the Barwon region.

The four-year agreement is guided by a joint vision of: Walking with Traditional Owners to enhance prosperity, creating a nature and climate positive future for the Greater Barwon region.

A joint action plan is being developed, focusing on areas such as:

- Nature and climate positive initiatives
- Waterway and catchment health
- Integrated water management
- Liveable cities
- Recreational amenity and water quality; and
- Cultural values and Traditional Owner partnerships.

The organisations already collaborate on a range of river health programs, including river restoration projects on Dewing Creek and the East Moorabool River at Bolwarra Weir, and on delivering environmental flows to the Upper Barwon River and Moorabool River, and to Painkalac Creek from Painkalac Reservoir.

Ramsar Week 2025 celebrates our internationally significant wetlands

Corangamite CMA

Bookings are now open for CMA second annual Ramsar Week – a jam-packed week of fun, informative, free events from 17-21 March 2025 celebrating the internationally significant Ramsar Wetland sites on our doorstep.

Ramsar Week 2025 raises awareness of the importance and value of Ramsar listed wetlands for communities of the Corangamite CMA region. Ramsar wetlands are those included on the List of Wetlands of International Importance developed under the Ramsar Convention. Wetlands achieve Ramsar status through their rarity and ability to support biological diversity.



Events include:

- Wetlands walk with Wadawurrung Traditional Owners Aboriginal Corporation at Lake Connewarre, Breakwater Swamp, and Balyang Sanctuary
- Corangamite water skink surveying with Candice Parker from Greening Australia at the Western District Lakes
- Restoration Revamp – a private property tour on Lake Corangamite with Greening Australia
- Environmental water at Reedy Lake, led by Corangamite CMA's Jake van Dam
- Lake Bookar Birding Tour
- Mud Islands clean-up day
- Canoe tours of Swan Bay with a visit to the Marine and Freshwater Discovery Centre

"We are fortunate to have two Ramsar-listed wetland systems in the region," said Corangamite CMA's Hannah Wiggs, Port Phillip Bay (Western Shoreline) and Bellarine Peninsula near Geelong, and Western District Lakes around Camperdown.

For bookings and more information visit ccma.vic.gov.au/ramsar-week/

Urban Energy combines with Rural Roots



International Women's Day



Aleisha.Cavarra

As the proud owner of Emeraude Hair Studio, a quirky and vibrant hair salon that brings a slice of Melbourne to the heart of Winchelsea, Aleisha is all about creativity, community, and making people feel good about themselves.

"I have a passion for hairstyling and a dedication to offer a fresh, modern experience to locals, blending big-city style with small-town charm," said Aleisha Cavarra.

Outside of her busy salon life, Aleisha is a true lover of nature and the arts. "When I'm not working, you'll find me hiking through scenic trails, painting, knitting, or curled up with a good book," continues Aleisha.

Her diverse hobbies reflect her creative spirit and love for balance in life. Work-life balance is important because it reduces

stress, helps avoid burnout, increases job satisfaction, and improves overall health and well-being. "You enhance your quality of life, increase productivity, and experience greater satisfaction in both your professional and personal lives by finding the right balance," said Aleisha.

A proud mother of two dogs and a cat, Aleisha is a firm believer in the importance of home and family, with her furry companions always close by. Married and grounded in her community, she's also deeply involved in local groups, always finding ways to connect and contribute to the well-being of her town.

Whether it's through supporting local events, collaborating with fellow business owners, or participating in volunteer efforts, she embodies the spirit of a community-focused leader.

Her dedication to both her craft and her community makes her an inspiring figure in Winchelsea, where she blends the best of both worlds—urban energy with rural roots. So come along and hear Aleisha's inspiring story at our International Women's Day event being held on Tuesday 18 March 2025 proudly supported by the Community Bank, Winchelsea & District, Growing Winchelsea and the Surf Coast Shire.

WINCHELSEA CONCRETING

• Driveways • Sheds • Decorative Concrete • Raft Slabs

Robert Murphy

☎ 0438 235 237

✉ winchelseaconcreting@outlook.com

DownRyte Excavations



- Excavations
- Drilling and Piling
- Rock Placement
- Tree and Stump Removal

Sean Hunwick

Mobile: 0409 447 288
Email: downryte@activ8.net.au

direct TEMPORARY FENCING

FOR HIRE - SUPPLIED & ERECTED - 7 DAYS
GEELONG - BELLARINE - COLAC - SURF COAST
PHONE CAM 0417 310 800

SOUTH-WEST — PAINTING — GROUP

Contact us:



0431 719 218



www.southwestpaintinggroup.com.au



matt@southwestpainting.com.au

We specialise in:

- New Homes
- Texture Feature Finishes
- New and Old Cabinetry Coatings
- Commercial Projects
- Maintenance Work
- Residential Work
- Wallpapering
- Pre-Sale Painting
- Timber Decking Rejuvenations

M & L DRAYTON

PLUMBING SERVICES

REG No 24356 C/A No C02594

- Domestic and Rural Plumbing
- Roofing
- Sewerage & Septic
- LPG & Natural Gas Connections
- Motorised Drain Cleaning
- Backhoe Hire

Phone Mark 5288 7244

PO BOX 98 WINCHELSEA 3241

Mobile 0428 520 142



DRIVEWAYS, CARPORTS, CROSSOVERS,
FOOTPATHS, SHED SLABS, STAIRS
HOUSE SLABS, EXPOSED, SEALING & MORE

CONTACT ALISTER NOW FOR A QUOTE

☎ 0411871950



AMACONCRETING1@GMAIL.COM



1,000-plus community views shared to help guide Council's strategic direction

Surf Coast Shire received more than 1,000 contributions to its Our Focus Our Future community engagement project, setting the strategic direction for 2025-2029. Between November and February, Council received 858 survey responses, 83 youth surveys, feedback from around 80 kids and 16 group submissions. Councillors and officers spoke to more than 1,110 people at 16 pop up sessions across the shire.

This revealed a highly invested community with a number of priorities emerging:

- **Environmental protection and sustainable growth:** Strong community desire to protect natural spaces and prevent overdevelopment.
- **Cost of living and housing affordability:** Housing shortages and rising living costs are major challenges.
- **Infrastructure and transport:** Concerns about public transport limitations, road safety, and cycling/pedestrian accessibility.
- **Tourism and local impact:** Concerns about seasonal overcrowding and its impact on infrastructure, which must be carefully managed.
- **Health and wellbeing:** Mental health concerns, family violence and substance abuse were identified as issues.

When asked about financial sustainability, respondents supported a balanced approach to managing Council's bottom line, focusing on greater community involvement in delivering local initiatives.

Young people prioritised safe public spaces, better public transport, and youth programs. Kinder-aged children highlighted the importance of outdoor play, parks, and social interactions.

A community panel has been established to give advice to support the development of Council's key strategic plans. Its 45 community members representing a range of demographic groups will meet throughout March.

Mayor Mike Bodsworth thanked everyone who contributed to the project. "All 1,000-plus views shared have been compiled to create a clear picture of what matters most to locals and what you want us to focus on over the next four years."

"This is valuable information for Council, helping us to set priorities and balance this with a sustainable financial position. We look forward to the community panel unpacking this even further over the next month."

Read the full engagement report and keep up to date with the project at surfcoast.vic.gov.au/OurFocusOurFuture.

Community at the core for Surf Coast Shire Council

Local people's passion and knowledge about their own lives and communities underpin two commitments made by Surf Coast Shire Council which adopted the revised Community Houses and Community Development policies at the February meeting.

Community Houses Councillor Tony Phelps said the policies, which sit side-by-side, confirm Council's commitment to support communities to act on issues that are important to them. "A community house is a great example of a local organisation that has community development at the heart of all that it does," Cr Phelps said. "They recognise that people are experts in their own communities, so they offer a diverse range of activities and events that cater for locals and offer opportunities for them connect."

Council supports five community houses in Winchelsea, Anglesea, Deans Marsh, Lorne and Torquay. It will continue providing and maintaining community house buildings and a small annual financial contribution to each house and to the regional network, Neighbourhood Houses Barwon.

"Community houses in our shire provided \$4.2m of community value in 2023," Cr Phelps said. "This figure includes the value of improving quality of life through social connections, volunteer contributions, emergency relief, and other services such as early childhood education and care. It demonstrates the huge impact that community houses have in our communities."

Community Development Council will also adopt the Community Development Policy, investing in programs and actions to support people participating and contributing to their community. "Our grants program is a community-led approach, as we provide funding that empowers individuals and groups to use their skills and interests to make the Surf Coast a better place to live and visit," Cr Phelps said. "From town murals and community garden improvements, to sporting equipment and surfing festivals, it's fantastic to see the various ways that we've played a role in supporting the community to make a big difference, right across the shire."

Council's next grants rounds will open Saturday 1 March. Applications will be open for Community Initiative and Natural Environment grants. To learn more, visit surfcoast.vic.gov.au/grants.

SERVICES & ACTIVITIES IN WINCHELSEA

VLINe TRAIN SERVICES

TO MELBOURNE:

Mon - Fri 6:41 am, 7:57am, 11:14am, 2:08pm, 7:23pm
Sat - Sun 9:26am, 1:30pm, 7:18pm

TO WARRNAMBOOL:

Mon - Fri 8:56am, 11:55am, 2:50pm, 5:27pm,
6:45pm, 8:50pm
Sat - Sun 8:47am, 2:46pm, 8:34pm



COUNTRY WOMEN'S ASSOCIATION

7pm second Wednesday of month
Winchelsea Senior Citizens' Hall

Join us. *A role for everyone*



Nationally accredited training to help our community.
Pop in to meet your crew **Wednesdays 7:30pm**

Winchelsea Unit 325 Mousley Drive **132 500**

Winchelsea and District COMBINED PROBUS CLUB



Senior Citizens Rooms,
Harding St, Winchelsea.
New members always welcome.
Enquiries Lorraine 0417 467 927



SOCIAL BRIDGE

Every Tuesday 10.30 am - 1.00 pm
Senior Citizens Centre
36 Harding Street Winchelsea
New players always welcome
Contact Elaine Atkinson 0458009616

WINCHELSEA TRANSFER STATION 55 Cressy Road, Winchelsea

Tuesday 2pm-4pm Saturday 1.30-3.30pm
Thursday 2pm-4pm Sunday 9.30-12.30pm



Closed on Christmas Day,
but open on other public holidays
that fall during their normal operating hours.
www.surfcoast.vic.gov.au/disposalsites



WINCHELSEA GIRL GUIDES

Our Unit meets at the Catholic Church Hall,
Harding St Winchelsea each Monday 4.30pm-6pm
All girls 5yrs- 15yrs Welcome!
Contact Yvonne Orchard 0448 672 630
or Lily Del Rennie Ph. 0428 936 441



1st Modda & 1st Winchelsea SCOUT GROUP

Joeys: Tuesdays of school term 5-6pm
Cubs: Mondays of school term 6:30-8pm
Scouts: Tuesdays of school term 6:30-8:30pm
All at Modewarre Hall, Cape Otway Rd
Venturers: Wed at Walton's Rd Venturer Den
Contact Marie McPadden 0409 330147



BUS TO THE HUB

For reservations on the weekly bus
to the Eastern Reserve Hub,
please phone 52671202.

SURF COAST MOBILE LIBRARY

Hesse St, Fridays, 2pm-5pm
Surf Coast Mobile Library
parked in Hesse Street (outside Shire Hall)
Fridays 2:00 and 5:00pm unless it is a Public Holiday.

WINCHELSEA TAXI

0429 672 888 or 5267 2888
Wheelchair accessible
10 seater bus available.

WINCHELSEA PLAYGROUP

Every second Thursday 10am-12pm
St Thomas Anglican Church Hall
cnr Barwon Tce and Hopkins St, Winchelsea
Contact: Danni Menzies 0432019944
winchelseaplaygroup@gmail.com
Facebook - Winchelsea Playgroup 2019
New families welcome

WINCHELSEA TENNIS CLUB



Tennis began at Winchelsea during the 1880's. The club played at the cricket ground reserve for many years before moving to a site near the Barwon Bridge.

By the early 1920's the Club was competing against Inverleigh, Wurdale, Mirnee and Murdeduke.

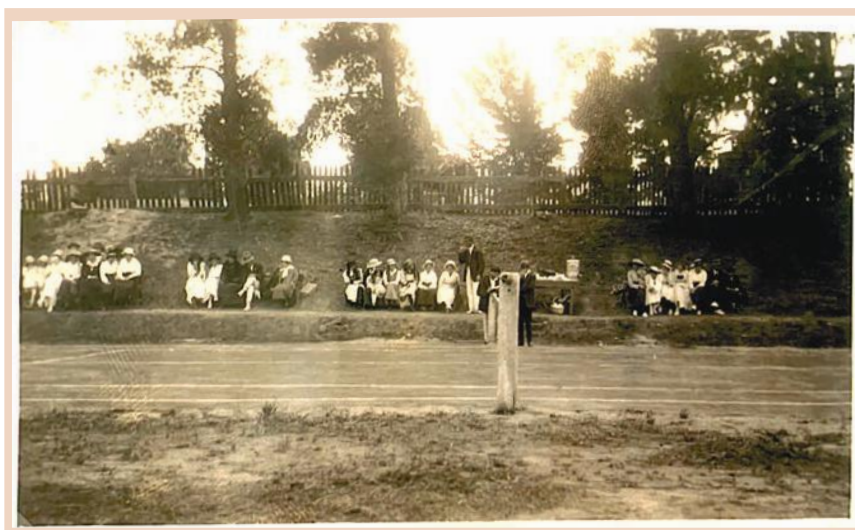
The club moved back to the cricket ground reserve in 1928 and in 1937 a concrete court was built. Soon after an asphalt court was added, enabling the Club to enter a team in the Colac & District Association for the 1937/38 season.

After WWII tennis resumed and Winchelsea joined the Polwarth & District Association with two A grade teams. After winning the

premiership for many years, by 1952 they entered a B team only. Lack of interest in the middle 1950's resulted in Winchelsea withdrawing from competition for a time.

After a resurgence of interest a number of players came to town and won the grand finals in 1959 and 1960. The first Junior tennis players, with over 40 juniors, played in the 1950's.

The CEF Club was formed in 1949 to provide tennis for parishioners of St Thomas Church of England. They played at Leveys court. A court was built in the corner of the church grounds and the Club played there until it disbanded.



Tennis courts on riverbank
prior to 1914
Photo taken c1920

WINCHELSEA HISTORICAL SOCIETY

Hesse Street Cnr Princes Highway, Winchelsea 3241

Wednesdays 1 - 4pm, Fridays 10 - 3pm



5234 6585 0417 385 984

*For all your septic tank, grease traps
and interceptor pits servicing.
Locally owned and operated*

WINCH WEBSITES
WEB SOLUTIONS SIMPLIFIED.

WEBSITES

**GROW business
INCREASE reach
SAVE time**



Find out what a website
could do for you
winchwebsites.com.au
04 887766 20

Water Delivery



WAZZA'S
WATER CARTAGE

*Stainless Tanker Up to 22,000 ltr loads
Barwon Water Registered*

Domestic & Rural Water Supplies

Call Wazza

Mob: 0428 877 260

Email: wazza@wazzas.com.au Web: wazzaswater.com



Knuckey's Winchelsea

Ph: 5267 2011

Knuckey's have in stock a complete
range of batteries to suit tractor,
heavy machinery, cars, utes

The largest range of the best oil for
your vehicles—**CASTROL**—
'when only the best will do'

The largest range of V belts.
A, B, C, D M Sections
Bolts and nuts for all occasions
Steel cut to size

**OZ TREES NURSERY
& TREE PLANTING SERVICES**

- Affordable seedlings—over 200 species
 - Complete plantation service—farm forestry, shelter, aesthetics
 - Deep ripping & mound ploughing. Rotary bed forming
 - Our experienced staff will help you select species for your site conditions and needs
- Also available—tree planting tools, milk cartons, plastic tree guards & bamboo stakes



569 Warrowie Rd. Colac
P: 5233 6280 F: 5233 6393
E: info@oztrees.com.au
W: www.oztrees.com.au
Open Monday—Friday
9am—4:30pm

Phone OzTrees for professional advice,



mainly music
est. 1990

**Fun, Interactive music sessions for
pre-school children (0-4 y.o.) and
parents/caregivers**

When: Mondays from 10 to 11 am
(runs during school terms)

Where: St Thomas' Hall
25 Barwon Tce.

To Enquire ring: 0407838256



**DANCE
CLASSES**

**TAKING ENROLMENTS NOW
FOR OUR WINCHELSEA STUDIO**

**PRE-SCHOOLERS - ADULTS
CONTROLLED CLASS SIZES
JAZZ - THEATRICAL TAP - CLASSICAL BALLET
HIP-HOP - CONTEMPORARY DANCE**

ENROL TODAY

WWW.MELSDANCECENTRAL.COM.AU



**Your Taxation
&
Superannuation
Specialists.**

Winchelsea

5267 2673

www.surftax.com.au

ven1g10064

COMMUNITY CO-WORKING & STUDY SPACE

9am - 2pm Mondays and Thursdays
 \$10 Flat rate no subscription required.



NBN Wi-fi
 Access to Photocopying and printing
 Whiteboard for brainstorming
 Microwave and fridge and On-Site Espresso Coffee!
 Private meetings and Wide screen TV also available upon request

2 x Toys for 2 weeks - \$2

No Subscription required.



Mon - Fri 9-2 at Winch House

Vinyasa Yoga

Tuesday evenings at 7pm
 11th of Feb – 25th March

Join Kate for pose alignment, pranayama, meditation, yoga philosophy & mindful movement. 23 per class.

Phonics with robot Reg

Friday Mornings

Walkers – 3 yrs 10.15am

Pre-School 3 – 5yrs 11.15am

'A Fun, High energy class to Introduce and teach phonics skills'

Bookings at robotreg.com.au/

Mother Goose Song & Rhyme

Every Wednesday at 2pm

During school terms

For parents and caregivers with children of all ages. Sessions are led by Child and Family Health team members. **FREE**, No bookings required just come along and join in!

Chatty Café

Fridays 10.30pm – 12.30pm

"Sip, Chat, Share, Care"

Winchelsea Shire Hall

Everyone Welcome, Collection tin for donations.

Winchelsea Knitting Group

Thursday Mornings 10.30 – 12pm

All welcome, Learn to knit or bring a project to work on whilst enjoying a cuppa and a chat at Winchelsea Community House.

Flow Yoga

Saturday mornings at 8am

8th of Feb – 29th March

An inclusive, all abilities class. Build strength, clarity and bliss as you move through a dynamic whole body experience. A playful, powerful class that leaves you feeling refreshed and uplifted. \$23 per class.

Tai Chi

Friday Mornings

9.00am – 10.00am

In the Helen Verity Room,
 Winchelsea community house

\$10 per session

Crochet Group

1.30pm in the Winchelsea Community Centre

Every Second Saturday

Next class March 8th

\$5 per class

Cancer Connection

Partnering with 

Weekly group sessions connecting those impacted by cancer through promoting wellbeing, education, exercise and social support.



For those living with cancer, and for those caring for those living with cancer. Share a cuppa and morning tea.

YOURCAREPATH
Regional Care Partnerships - Chronic Conditions

Introductory Session
Feb 27th & ongoing
Thursdays 10am-12pm

Hesse Rural Health Community Building
8 Gosney St, Winchelsea

To register your interest please contact:
Email: healthpromotion@hesse.vic.gov.au Phone: (03) 5267 1200

BACK TO BACK

2025



Get behind 3 Victorian teams as they shear, spin and knit a jumper in the fastest time.

It's slow clothing sped up!

Watch a woolly jumper materialise in front of your eyes!

SATURDAY 29 MARCH 2025
TARNDWARNCOORT HOMESTEAD
5459 PRINCES HWY, WARNCOORT, VICTORIA
8:00AM TO LATE

Food. Bar. Market Stalls. Yarn Shop. Raffles. Hands-on activities.

Gold coin entry.
www.tarndie.com/tarndie-back-to-back-2025
Phone 0480 080 248

 Raising funds for:  

SCAN ME! 

Winchelsea Community Market



Shire Hall
9am - 1pm

FIRST SUNDAY OF EACH MONTH

6 April 2025
4 May 2025
1 June 2025
6 July 2025

Winchelsea Community Foodbank

Fridays, 12 - 2PM

30-32 Hesse Street Winchelsea



Food relief for our community.

For more info, contact Tess
healthpromotion@hesse.vic.gov.au
0417 848 292



Request for Tender Hospital Auxiliary Opportunity Shop - Redevelopment Works

Tender Number: A2025-02

Hesse Rural Health is seeking a suitably qualified and experienced Contractor to undertake redevelopment of a retail site in Winchelsea. The Works are to be completed in accordance with the directions provided in the Tender Conditions, including the Specification.

For a copy of the tender documents please visit <https://www.tenders.vic.gov.au/tender/search/> searching in the 'Issued By' field under Hesse Rural Health. Submissions close 2:00PM, Thursday 6 March 2025.

Note: The lowest or any submission will not necessarily be accepted.

COMING EVENT

BOGGED

Join us for a moving conversation with Mary Tuesday 18th March 6.30-8.30pm at the Winchelsea Shire Hall-- let's change the way we approach men's wellbeing.

IN WINCH

A Men's only Mental Health night with Mary O'Brien, the founder of 'Are you bogged mate' a movement aimed at helping connect country men with support services and break down the stigma associated with seeking help around mental health.

"After spending her whole life working in rural and remote Australia, Mary knows country blokes. She's worked with them, for them, and beside them and most importantly she knows how to talk to them. This unique perspective inspired the launch of Are you bogged mate?"



FREE to attend.
Nibbles and drinks provided.
Men only (this is at the request of the speaker for the benefit of the men attending) Bookings ensure catering needs are met

**Tuesday March 18th
6:30pm - 8:30pm
Winchelsea Shire Hall**

Bookings:
Scan the QR Code, phone 52672240 or email vitality@onebodychiropractic.com.au to book your (FREE) ticket! For you, and a mate!

"I promise you there is always a way out of the bog hole and there are plenty of people ready to help you. Don't choose a permanent solution for a temporary problem. We have already lost too many good men".



Supported by Winchelsea Community House
+ 'The Gentlemen of Geelong'

THE
Vitality
MOVEMENT

ARE YOU BOGGED MATE?

©Mary O'Brien 2018

Discover a rewarding and secure career as a Prison Officer.

Apply now to become a Prison Officer at
Western Plains Correctional Centre, Lara.



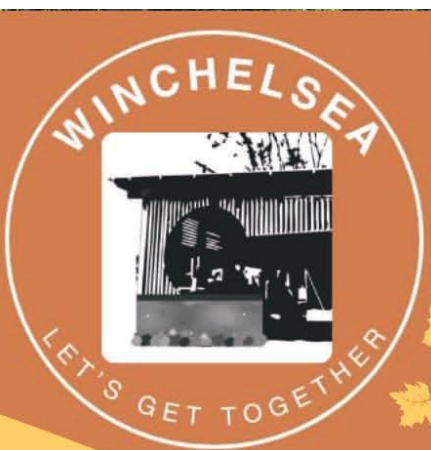
**Corrections
Victoria**

Hiring now



Authorised by the Victorian Government,
1 Treasury Place, Melbourne





It's a celebration!

WINCHELSEA'S COB WALL BUILD



SAT 1/03	SUN 2/03	MON 2/03	TUE 3/03	WED 5/03	THU 6/03	FRI 7/03	SAT 8/03
10am-12pm	10am-12pm	DEANS MARSH & WINCH PS 10.30am-12pm	WINCH PS 10.30am-12pm	WINCH PS 10.30am-12pm	WINCH PS 10.30am-12pm	Preschool children and carers 10-12PM	10am-12pm
2pm-4pm	2pm-4pm	WINCH PS 1-2.30pm	WINCH PS 1-2.30pm	WINCH PS 1-2.30pm	WINCH PS 1-2.30pm		2pm-4pm

What to expect

- Music Entertainment
- Laughter & Mud stompng!
(Wear something old!)
- Everyone Welcome - All Ages!
- No Experience Needed
- Join in or watch on!

**Youth
Night**
5.30 -
7pm



**Family
Night**
5.30 -
7pm



LET'S CREATE A NEW HISTORY



ALISON DEAN
alisonpdean@gmail.com



Riverbank
Playground



WINCHELSEA'S COB WALL BUILD

*Come Cob and
Stomp!*

**TUESDAY
4TH
MARCH
5:30- 7PM**

WHAT TO EXPECT

New friends

Food - Music - BBQ - Cake

Mud Stomping - Wear something old!

*~Special thanks to Surf Coast Youth for
funding our event~*



Riverbank Playground



ALISON DEAN
alisonpdean@gmail.com



LET'S CREATE A NEW HISTORY



Bags of rubbish don't belong in your recycling bin.

The bags tear open and spill rubbish onto the recycling, which stops some items from being recycled.

Put bags of rubbish in your red-lid landfill bin instead.

Visit surfcoast.vic.gov.au/recycling to find out more.





Looking Back

Mick O'Mara

At the Winchelsea Star we are very interested in running some of the life stories of older Winchelsea residents.

Perhaps the story could be on your family history from many generations ago. Another approach could be, 'What brought you to Winchelsea?' Personal experiences would be especially interesting.

Winchelsea elders ave family histories and a lifetime of experiences. How about sharing them with the wider Winchelsea community?

Antique Repairs

By **Doug Burns** est. 1976

- All Furniture
- French polishing
- Carving
- Veneering
- Wood Turning
- Porcelain



Unusual Requests Welcome

180 Barwon Terrace, Winchelsea

0428 672 704



5234 6585 0417 385 984

*For all your domestic & stock water.
Also available for road and civil construction
Local owned and operated.*

52672192 **R & K Creative Framing**
for all your framing needs

free quotes
pension discount
specialist in Age &
Disability Modifications

Ray & Kim Jansen
10 Witcombe st
Winchelsea 3241

Ray The Home
Maintenance HANDYMAN
abn 47928623462

0414672192



**Winchelsea
Supermarket**

Trading Hours

Monday to Saturday

8.30am to 7.30pm

Sunday

10am to 7pm

Ph: 5267 2676

29 Main St, Winchelsea

All About **Mowers & Chainsaws**

Repairs to all makes and models of ride on mowers, domestic mowers, pumps, chainsaws, brushcutters and small engines.

Trading Hours: Mon - Fri 8am - 5pm Saturday 8am - 12 noon

5267 2266 Cnr Princes Hwy & Lennox St Winchelsea

www.allaboutmowers.com.au
accounts@allaboutmowers.com.au

FERRIS LDX STIHL BRIGGS & STRATTON VICTA



**SOUTHERN
GRAIN STORAGE
PTY. LTD.**

AG SUPPLIES FERTILISER GRAIN STORAGE SEED CLEANING

(03) 5267 2351

**MRP
Steelworx**

Matthew Partridge

p 0418 672 334

e mrpsteelworx@yahoo.com.au

Welding Service

- Onsite welding
- Farm maintenance
- Farm machinery & equipment repairs
- Cattle & sheep yards
- Custom built trailers
- Supply & install gates

Voluntary assisted dying laws still the compassionate choice

The Victorian Government has accepted all recommendations from the independent review into Australia's first voluntary assisted dying (VAD) laws. The review found strong community support for VAD, with it often accessed at the same time as palliative care. It also found that it is operating safely with no reports of ineligible people gaining access to VAD.

Despite this, the review found areas for improvement including guidance for health practitioners on how to deal with patients that want to access VAD. It also found the State Government needs to advocate to the Commonwealth Government for greater support.

In response to the review, feedback from the community and the recommendations made by the VAD Review Board, the Government will rewrite legislation to improve access to VAD.

The Government will legislate to allow health practitioners to initiate discussions about VAD - acknowledging sentiments from stakeholders that it stops doctors having conversations with patients about end-of-life care and limits decision-making. Changes may also require health practitioners who conscientiously object to VAD to provide minimum information to patients – the review stating such obstruction was inconsistent with person-centered care.

For Victorians with neurodegenerative conditions who are house or bed-bound, the requirement for a third assessment will be removed, making the process easier and less complicated, as well as reducing demand on doctors who make these assessments.

Since 2019, 1,282 Victorians have accessed VAD services as a safe and dignified end of life choice.

The review is publicly available at health.vic.gov.au/voluntary-assisted-dying/five-year-review.

Celebrating Victoria's volunteers

The State Government is thanking volunteers and celebrating their contribution with the 2024 Volunteering Awards. Minister for Carers and Volunteers Ros Spence presented the Awards recognising eight exceptional volunteers who have made an invaluable contribution to Victoria.

Cherie McLean received the Premier's Volunteer of the Year Dame Elisabeth Murdoch Award for her work in disaster affected communities. An Australian Red Cross Volunteer for more than 60 years, Cherie has worked on major disasters such as the 1983 Ash Wednesday and 2009 Black Saturday bushfires.

Gather My Crew was named Volunteer Involving Organisation of the Year, in addition to receiving the Volunteering Innovation Award, for their work supporting people experiencing illness,

crisis or life changing news. Gather My Crew is a free digital volunteer service, connecting people in need with volunteers. They have offered more than 350,000 hours of assistance in local communities delivered by 55,000 volunteers.

Other award recipients include:

Brenton Ponza – Volunteer Impact Award

Arfa Sarfaraz – Volunteer Leadership Award

Tyrese Walsh – Young Volunteer Award

Special Olympics Melbourne Inner East – Inclusive Volunteering Award

Tribe Monbulk Youth Inc – Grassroots Volunteering Award

Australian Working Group for International Student

Employability Inc – Volunteering Partnerships Award.

For each Award recipient, visit volunteeringvictoria.org.au/events.

Supporting young Victorians with Landcare grants

Young Victorians are receiving more support to care for our great outdoors. Minister for Environment Steve Dimopoulos has announced the opening of Junior Landcare and Biodiversity Grants totalling \$450,000 to get young people out in nature to care for and learn about Victoria's environment.

Victorian primary and secondary schools, Scouts and Girl Guides, childcare centres, youth groups and Junior Landcare groups can apply for grants of up to \$5,000. Projects can focus on either education activities to involve and engage young people or on the ground projects focusing on creating and restoring native habitats.

Last year, the Government provided grants to 103 recipients planting native gardens, building habitat to attract native insects and birds and excursions to wildlife sanctuaries. Recipients included Research Primary School whose Paradise Project preserves local biodiversity including Gang-Gang cockatoo by revegetating school grounds with over 400 plants.

Wangaratta District Specialist School received funding to help students with disability connect with the natural environment by planting 700 indigenous plants to regenerate a pond area at Winton Wetlands.

Students at Bundoora Secondary College monitored water quality in ponds and creeks in Gresswell Forest and conducted frog surveys to determine the health of the environment.

Over 47,000 young Victorians have taken part in Junior Landcare environmental projects since 2018 – planting nearly 100,000 native plants, going on 1,100 excursions and completing 270 biological surveys.

For more information on Victorian Junior Landcare and Biodiversity Grants, visit environment.vic.gov.au/grants.

Autumn racing leaves the starting line

Regional racegoers will have a busy calendar of events to look forward to this autumn thanks to a funding boost from the State Government. Minister for Racing Anthony Carbine has announced more than \$350,000 to support 34 racing events in country Victoria from March to May.

Racing clubs are offering attractions such as live music, children's activities and shuttle buses – making it a day out for everyone that is more than just the horses.

With more than 60,000 patrons expected to flock to regional race meetings, the funding will also help clubs expand their event promotion to make sure more people know what's on offer – boosting visitors to regional areas, supporting local businesses and tourism.

The Geelong St Patrick's Cup Day will get a \$20,000 boost – great news for those wanting to test their Irish Luck on the track.

Racing events are held in autumn at local clubs across the Ballarat, Geelong, Hume, Latrobe-Gippsland, North West, Shepparton, Warrnambool and South West regions.

For more information on regional racing events, visit country.racing.com for thoroughbred racing, thetrots.com.au for harness racing or grv.org.au for greyhound racing.

More homes for regional Victoria – in the right places

More homes mean more opportunity – and the State Government will deliver more homes in regional communities, so young working people can find a home in the places they know and love.

But where these homes go matters. That's why regional growth boundaries will be developed for Geelong, Ballarat and Bendigo – to manage outward sprawl and encourage more homes in the centre of town.

Plan for Victoria

Plan for Victoria is a 30-year long-term plan to deliver more homes, more jobs and great communities. It sets out 22 actions, including:

- Implementing housing targets for every local government area
- Implementing new controls to streamline planning in activity centres
- Incentivising more social and affordable homes
- Designing and building better quality homes and apartments
- Protecting tree canopies and introducing minimum open space requirements in planning

- Short-term actions will be measured, reviewed and updated, with new actions developed over time – and it's supported by steps Government is already doing to build more homes.

The Plan has five pillars: housing for all Victorians, accessible jobs and services, great places, sustainable environments, and self-determination and caring for Country.

The Plan replaces the existing metropolitan strategy Plan Melbourne 2017-2050 and regional growth plans. It was developed following extensive community-led consultation. More than 110,000 Victorians engaged online or in person, with hundreds of submissions and more than 15,000 items of feedback.

Regional growth boundaries

One of the 22 key actions in Plan for Victoria is a commitment to “carefully manage the outward sprawl of regional cities and towns.” Regional boundaries will be developed in partnership with councils, and will “only expand outward if consistent with the vision for these places and if and when councils and other authorities can provide necessary infrastructure (such as water and sewerage) for more people.”

Melbourne has a defined boundary, and Bass Coast, Surf Coast, Bellarine Peninsula and Macedon Ranges have or will soon have protected settlement boundaries. Plan for Victoria doesn't change these.

It's only fair that boundaries of regional cities get recognition to help them grow sustainably – starting with Geelong, Ballarat and Bendigo, where more than 200,000 additional homes will go over the next 30 years.

Where these homes go matters. More homes with backyards for families is a good thing, but too much, too soon can strain services for people already living there – and impact agricultural land.

Regional boundaries make sure areas grow in a sustainable way – and will protect Ballarat, Bendigo and Geelong by preserving agricultural land, parks, forests, and natural resources.

Regional boundaries will also direct more homes where they're needed – close to jobs, transport, shops, schools, healthcare, and services – and produce more affordable housing options for the next generation of young people who want to stay and buy in the city where they grew up.

The new guidelines that Government will develop with councils for establishing and amending regional city boundaries will also be available for other regional cities and towns.

The boundaries help deliver more homes, more jobs and great communities, while embracing what makes every city, town and community special.

Use a netting fence to protect from dam pollution

Agriculture Victoria

Constructing a netting fence above your dam can reduce the amount of organic material entering during and after a storm.

Ag Vic Land Management Extension Officer Clem Sturmfels said while thunderstorms can result in dry grass, manure, soil and other material being swept into your dam.

Left unattended, these will sink to the bottom and decompose, impacting water quality.

'Netting fence sediment traps are quick and easy to erect using second-hand materials. They slow the speed of water and trap large organic materials. As the water slows, heavier sediments drop to the bottom while organic materials trapped on the fence act as a filter for finer materials,' he said.

'The netting fence needs to be supported with steel posts and follow the contour of the land. Make the base of the fence follow a level path, so the water can spread out in both directions. The longer the fence, the more material will get trapped.

The ends of the fence need to be turned uphill to increase capture of materials.

'Geo-fabric silt fences are great for trapping fine materials, however they

transmit water slowly and are not recommended for concentrated water flows. Straw bales placed tightly together and pegged down with steel posts can create an effective sediment trap. Alternatives include synthetic silt fences, sediment ponds or simple diversion banks with drop boards.

For more information, visit the Agriculture Victoria website.

For more information about drought and dry seasonal conditions support visit agriculture.vic.gov.au/dryseasons or call 136 186.



Join us at the Uniting book sale.

**Nothing over \$1
Children's books
\$0.50!**

Join us at our monthly book sale.

Held the first Friday and Saturday of each month at Uniting Grovedale, the Uniting book sale raises much needed funds for local services.

**Friday
7th March
&
Saturday
8th March
10am - 2pm**

272 Torquay Rd, Grovedale
(Corner Reserve and Torquay Roads)

Uniting



TRENCHES & HOLES PTY LTD.



PHILLIP ROBERTSON

☎ 0427 672 945

WINCHELSEA

- **General Earth Works**
- **Driveways**
- **Trencher**
- **Kanga Loader**
- **Grader**
- **Excavator Work (3.5 & 6.5 Tonne)**
- **Tip Truck**
- **Rock Breaker**
- **Post Holes & Shed Footings**

A.B.N 74006896898



Café La Hoot

**have you tried
'owl' coffee?**

1 willis st cafelahoot@gmail.com 0407 528 999

Winchelsea Men's Shed



For The Community

51 Hesse Street

Every Wednesday from 9:30am

New members always welcome

For more detail contact:
Ray Atkinson (Co-ordinator)

0407 839 139

or

winchmenshed@gmail.com

Need a job done?
Woodworking jobs,
furniture repairs, small jobs.
Drop in and talk to us.

Hop Hop Hooray!

EASTER Playgroup

Join us on
Thursday April 10th
10:30AM - 12PM
Hesse Rural Health
8 Gosney Street
Winchelsea

for some egg-citing fun!

We'd love to see you!

WINCHELSEA PLAYGROUP

Each Thursday during school terms.
Come along between 10AM - 12PM.
Check out our Facebook Page for more information about the happenings of each session.
Playgroup Leader - Danni Menzies
Email: winchelseaplaygroup@gmail.com
St. Thomas's Hall,
27-29 Barwon Terrace,
Winchelsea VIC 3241

\$5 PER FAMILY
INCLUDES MORNING TEA & HOT DRINKS FOR CAREGIVERS

Scan to be part of our Facebook Group

COMMUNITY CO-WORKING & STUDY SPACE

9am - 2pm Mondays and Thursdays
\$10 Flat rate no subscription required.



NBN Wi-fi
Access to Photocopying and printing
Whiteboard for brainstorming
Microwave and fridge and On-Site Espresso Coffee!
Private meetings and Wide screen TV also available upon request

WINCHELSEA LIONS CLUB

PAPER RECYCLING

Paper depot rear of
Senior Citizens Rooms
Harding Street
NEWSPAPERS,
MAGAZINES,
PHONE BOOKS WANTED



RAISING FUNDS FOR
OUR TOWN & DISTRICT
0408 520 606

Winchelsea Men's Shed



For The Community
Men's Shed Kindling/Offcuts
Bags of Kindling/timber offcuts
are available for pick up from
the Men's Shed on Wednesday's
from 9.30 to 2.30.

If you need a delivery made you
can call Bill on 0438 083 373.
The price for a bag of kindling is
now \$7.00 (up from \$5.00).

Nesting Boxes

Bird or animal nesting boxes are
available from The Men's Shed.

These can be made to order.

Call in on any Wednesday
to have a chat.



WINCHELSEA LIONS CLUB
ARE SELLING ENVIRONMENTALLY
FRIENDLY SHREDDED PAPER
COMPRESSED BRICKS FOR YOUR FIRE
SAVE ON THE RISING COST OF WOOD
BY INCLUDING PAPER BRICKS
AS WELL

PACKET OF 4 ROARS (BRICKS) **\$5**
ROLL OF PURRS (SMALL ROLLS) **\$2**

AVAILABLE AT LIONS PAPER SHED
36 HARDING STREET
SATURDAY MORNINGS
10AM - 12 NOON
FROM 4TH MAY UNTIL SOLD OUT

EFTPOS AVAILABLE
CASH ACCEPTED

WANT TO JOIN PROBUS?

Enjoy fellowship with
other members

Enjoy trips & outings

Listen to guest speakers



Contact Lorraine
0417 467 927

Winchelsea Churches



St John the Baptist Catholic Church

Father Joseph Panackal
0404598558
Harding St, Winchelsea 3241

MASS TIMES

Winchelsea - St. John the Baptist
6pm Sat. MAR. 1, 8, 22, 29

ST. JOSEPH'S PARISH
150 TH ANNIVERSARY MASS
SUNDAY MARCH 16th
11AM @ MEREDITH
ALL WELCOME

St Thomas' Anglican Church

Rev'd Phil Jacobson
0477 672 042
stthomaswac@gmail.com
Barwon Tce, Winchelsea
Service 10am

Winchelsea Uniting Church

0475 777 301
uca.winchelsea@gmail.com
Hesse St, Winchelsea 3241
Services 9.30am Sundays

Thought for the Week

"Look to this day ...

In it lie the realities and verities of existence, the bliss of growth the splendor of action, the glory of power.

For yesterday is but a dream and tomorrow is only a vision.

But today, well-lived, makes every yesterday a dream of happiness and every tomorrow a vision of hope."

"Have a Blessed week."

John Bader,
Former U/C Accredited
Lay Preacher

YOU ARE INVITED TO THE...

ST JOSEPH'S PARISH

150th

ANNIVERSARY MASS

CELEBRANT:
ARCHBISHOP PETER COMENSOLI

SUNDAY | MARCH | MEREDITH
16

28 LAWLER STREET MEREDITH

11am Holy Eucharist
Followed by a fellowship lunch

Life-changing accident sets farmer on a new course

Genetics Australia

A life-changing accident led Wagga farmer Neil Jolliffe back to where he started his agricultural career.

Neil joined Genetics Australia as a beef and dairy breeding consultant after a ruptured disc in his back curtailed his ability to farm.

While Neil and his wife Simone continue to oversee their dairy farm, he can no longer milk or do heavy work. However, he has taken on a job with Genetics Australia that returns him to his main love of farming – breeding.



Neil grew up on a dairy farm but spent his teenage years to his mid-20s breeding Limousin cattle and a total of 22 years selling cattle semen.

"On leaving school I returned to my parents' property where I started my own Limousin stud, Riverlea," Neil said. Seeing a gap in the market and having confidence in his ability to select suitable genetics, he started his own company Riverlea Advanced Genetics at age 17 and began sourcing, importing and marketing Limousin semen.

World Day of Prayer 2025 Cook Islands

'I made you wonderful'



Friday 7th March at 1.30pm

**St John's Catholic Church
Harding Street, Winchelsea**

Afternoon Tea to follow in hall.

**Details - Marg: 0418 983 005
Lyn: 0400 649 652**

Everyone is welcome

(Winchelsea Combined Churches)

He later returned to dairy and Neil and Simone had their own stud herd, Currajugle Holsteins for 24 years. They started as sharefarmers and have owned their 283-ha farm since 2008. They currently milk 320 cows in a year-round calving system. Having commissioned a barn 14 months ago, they are on a growth trajectory towards 400 cows and robotic milking.

While he still loves farming, Neil's future was under a cloud when he ruptured a disc in his back two years ago in an on-farm injury lifting bags of fertiliser. The injury hurt but "being a farmer, you grunt through it," Neil said. "It hurt at the time and then it never went away. Two months later I was making some hay feeders and rolling them around; the next day I couldn't get out of bed."

Neil had four weeks on the lounge before surgery and recovery has been very slow. "My Dad sat with me to watch some TV and said I could sell the farm and buy rental properties and live off them. I said 'that's not on the horizon, Dad'."

Neil is now up and about though still somewhat restricted. "I'm still strong," he said. "The frustrating part is that I could pick up a 20-kilo bag off a bench and move it but I couldn't pick it up off the ground."

But one setback can lead to an opportunity. "I still love the farm life and breeding cattle," Neil said. "Breeding has always been my favourite part of farming and I'm basically back to what I was doing."



WINCHELSEA FACEBOOK



Community, Sports, Churches and Non-profits

What's on in Winchelsea	facebook.com/WhatsoninWinchelsea
Winchelsea FREE	facebook.com/groups/winchelseafree
Winchelsea Community Information	facebook.com/groups/207538644446972
Winchelsea Classifieds 3241	facebook.com/groups/216942861684082
Winchelsea Lost and Found	facebook.com/groups/768187693217518
Winchelsea Op Shop	facebook.com/HospitalAuxiliaryOpShopWinchelsea
Winchelsea Shire Hall	facebook.com/WinchelseaShireHall
Winchelsea Community House	facebook.com/winchelseacommunityhouse
The Green Winchelsea Residents	facebook.com/groups/515322772623126
Growing Winchelsea Inc	facebook.com/growingwinch
Winchelsea Star	facebook.com/TheWinchelseaStar
Winchelsea Movie Club	facebook.com/wincheseamovies
Winchelsea Community Market	facebook.com/100083362387611
Winchelsea Land and River Care Group	facebook.com/envirowinchelsea/
Upper Barwon Landcare Network	facebook.com/UpperBarwonLandcare
Winchelsea & District Historical Society Inc	facebook.com/Winchelseaanddistricthistoricalsociety/
Winchelsea Wildlife Shelter	www.winchelseawildlifeshelter.com/
SCARS - Surf Coast Animal Rescue Service	facebook.com/groups/415211698950674
Winchelsea Gardeners	facebook.com/groups/779878518703025
Winchelsea & District Historical Society	facebook.com/Winchelseaanddistricthistoricalsociety/
Winchelsea Repertory Society Inc	facebook.com/winchrep/
Winchelsea Globe Theatre	facebook.com/Winchelsea-Globe Theatre-164790897641678
Winchelsea Uniting Church	facebook.com/winchelseaunitingchurch
St Thomas' Anglican Church	facebook.com/StThomasWinchelsea
St John the Baptist Catholic Church	facebook.com/pages/Winchelsea-Catholic-Church/101775670163180
Winchelsea Mainly Music	facebook.com/groups/668500343953191/
Winchelsea Health Club	facebook.com/WinchelseaHealthClub
Winchelsea Playgroup (School terms only)	facebook.com/groups/551663435367031
Winchelsea Girl Guides	www.guidesvic.org.au/
Winchelsea/Modewarre Scouts	facebook.com/1stModewarreScouts
Winchelsea Fire Brigade	facebook.com/winchelseafirebrigade/
Winchelsea SES	facebook.com/groups/WinchSES
Country Women's Association - CWA Winchelsea	facebook.com/pg/CWAWinchelsea/
Winchelsea Bowls Club	facebook.com/Winchelsea-Bowls-Club-533783333344345/
Winchelsea Blues Cricket Club	facebook.com/groups/8999049476/
Winchelsea Blues FC	facebook.com/WinchelseaFNC/
WYLD Winchelsea Youth Leisure and Drop in	facebook.com/groups/569737570027065/
Lions Club of Winchelsea	facebook.com/LionsWinchelsea
Winchelsea Probus	facebook.com/893535194971083
Winchelsea Golf Club	facebook.com/wincheseagc/ facebook.com/groups/1324943804676697
Winchelsea's Zumba Dance Crew .	facebook.com/share/g/1B19EATPVz/

Scott McDonald
0423 413 829



S.J.R AUTOMOTIVE
ABN 942 483 646 39
13 ALSOP DRIVE, WINCHELSEA VIC 3241

Wightons Lawyers

Dispute Resolution & Litigation
Debt Collection
Property Law
Wills & Estates
Powers of Attorney
Business Law
Family Law

By appointment only

22 Willis Street, Winchelsea
ph. 5221 8777

www.wightons.com.au



SIMPLE STORAGE SOLUTIONS

- Personal & Business Storage
- Boat, Caravan & Vehicle Storage
- High Security Premises
- Individually Alarmed Units
- Electric Gate Access
- 7 Day Access & CCTV

YOUR STORAGE PROBLEMS SOLVED

5267 3116
6 ALSOP DRIVE, WINCHELSEA 3241



Winchelsea Taxis is now Surfcoast Taxis

Our fleet of vehicles are growing to all late models and we are covering an extended area including Winchelsea, Colac, Bannockburn, Inverleigh, Great Ocean Road and Geelong.

We have a fleet of 10 seater Maxi Vans, all with capacity to carry wheelchairs.

Surfcoast Taxis Pty Ltd
All Bookings: 0408 325 992
Fax: 5267 2699
Email: bannotaxis@gmail.com
(Admin or Stan 0429 672 888)
66A Batson Street
Winchelsea 3241



Book your next ride with
smartHAIL



Book Track Pay Rate

Download on the App Store GET IT ON Google Play

Accounts NDIS provider. TAC, DVA etc

NDIS provider number 4050001044
NDIS provider number 4050001048

TREE WORKS & STUMP GRINDING



Fully insured and qualified
climbing arborists.

Slashing and fire preparation.

FREE QUOTES
0488 553 650
Mathieu Vaupres

www.colactrees.com.au



SIMCO
PLUMBING SERVICE
Domestic - Commercial - Rural

0400 643 976

- All general Plumbing and Gasfitting • Water tanks and Pumps
- Renovations and Extensions • Hot water and Heat pump
- Split system and Wood heaters • Roof and Gutter
- Septic and Treatment plants • Excavation, Bobcat and Tipper
- Driveways and Earthworks
- Blocked drains and CCTV Inspection

Simon McGillivray
Lic: 109610 Free Quotes, Fast & Friendly Service



- Domestic and Commercial hire equipment • Industrial welding gas
- Digging and Earthmoving equipment • New trailers and trailer repairs
- Firewood • Stockists of Royal Oil Lubricants products
- LPG for domestic and commercial requirements

Give Chris and the Team a call on **5232 1177** or email info@colachire.com.au

www.colachire.com.au

101 Wallace St Colac 3250

COLAC HIRE

Winchelsea AUTO SERVICES
One stop auto shop

- ❑ LOG BOOK SERVICE
- ❑ AUTO ELECTRICAL
- ❑ TOWING
- ❑ AIR CONDITIONING
- ❑ CLUTCH & BRAKES
- ❑ TYRES
- ❑ WHEEL ALIGNMENT
- ❑ BATTERIES

CAR, TRUCK REPAIRS & Roadworthys

PH: 5267 3001

Mob: 0417 137 457

17 Alsop Drive

HESSE RURAL HEALTH

Rokewood
Bannockburn
Beeac
Winchelsea

Acute Care*
Urgent Care*
Residential Aged Care*
Community Nursing
Dietetics
Physiotherapy
Occupational Therapy

Diabetes Education
Social Support Groups
Counselling
Home Care
Health Promotion
* services from Winchelsea only

www.hesseruralhealth.com.au
P: (03) 5267 1200 E: reception@hesse.vic.gov.au

Visit our new office located at
Winchelsea Ag, Horse & Pet

For all your livestock, rural real estate and property management needs, speak to the Charles Stewart team today

Livestock Peter McConachy 0408 522 878
Real Estate Michael Stewart 0418 520 467
Property Management Sarah Higgs 5231 5011

CHARLES STEWART 5231 5400
15 Murrell Street, Winchelsea



eldersrealestate.com.au



Elders

You're in Safe Hands With Peter Lindeman
Delivering Exceptional Results for Over 20 Years

If you're thinking of selling a Rural or Lifestyle acreage property on the Bellarine, the Greater Geelong region or beyond then think Peter Lindeman. Peter spent 20 years managing farms before jumping the fence to sell them; and over the last 23 years he's helped over 350 vendors achieve extraordinary results, more often than not surpassing their expectations. Why not let Peter show you how he can help you achieve an outstanding result for your property.

Peter Lindeman - 0418 525 609
RURAL AND LIFESTYLE SALES MANAGER - ELDERS GEELONG

E: peter.lindeman@elders.com.au




Winchelsea Bowls Club

Julie Johnson



MIDWEEK FINAL TEAM

Back - Ray Thompson, Graeme Lloyd, Paul Sorensen, Ray Quigley, Lawrie Davie, Peter McConachy.
Front - Pip Ward, David Littler, Wendy Knuckey, Angela Littler (emergency) Julie Johnson, Annie Walker, Marcia Brandenburg.

PREMIERSHIP FOR MIDWEEK 1 AND SATURDAY 1 & 2

AIMING FOR BACK TO BACK PREMIERSHIPS ON SATURDAY 8TH MARCH AT COLAC

With great support from Winch Bowlers and friends, our Midweek Division 3 team took on the contenders in Colac City. Although we bowled as best we could on the day, we were defeated in the end by 6 shots to a strong City side who eventually took out the Premiership on Tuesday 25th to the more favored team of Camperdown. This was a great effort by our players and would have been a great disappointment to Camperdown, which shows you that anything can happen in a final. Extremely well done Winch Midweek 3!

With a weekend of play stopped due to fire restrictions which really upsets the flow but can't be helped, on Tuesday 25th Midweek Division 1 commenced their quest for the Premiership against Simpson under the dome at Colac at about 1.45 p.m. Many supporters were present for this match and their presence was a wonderful asset all afternoon and into the evening. We have a great spirit this smaller club in the region and we played as we have been during the season, a great cohesive, supportive team. Finally at about 6.45 p.m. we emerged as the Premiers for Season 2024-25 with a 20 shot 3 rink win.

Saturday 1st March Preliminary Final

Playing under the dome at Colac, Winchelsea 2 def Cobden 1 2/4 rinks, 92/83 shots. This was a close game all afternoon, well supported by Winch Blues members and friends which we only won in the final few ends. Next Saturday we are in the same position as last season a very enviable place to be however, each Division has a different opponent. Winchelsea 1 vs Apollo Bay 1, Winchelsea 2 vs Lorne 1. You could nearly call it the Coast To Country Grand Final Day. We have just received word that the staging and timing will be different to last year so those wanting to travel with the teams on the bus will need to keep their eye on social media, in touch with club members and the sign up sheets at the club.

COME TRY BOWLS

With a very successful and extremely well attended three Friday nights, this was obviously enjoyed by many people within the community, their family and friends. Thank you to our wonderful local bank who assisted to make this such a success and to all who worked in the clubrooms/bar, the BBQ, setting up the rinks helping the attendees and with the clean up. It also gave us a small chance to try the newly installed light towers which will be officially opened on Friday 11th April. All welcome.

Obviously, this will be a week of physical and mental preparation for the Grand Final and will no doubt take us up the road again for practice sessions. In what will be a mighty climax to a very successful season to date, may the bowls be with you!!

Winchelsea Bowls Club welcomes all visitors. Our Club has a beautiful garden setting in the heart of the town. For the complete newcomer to lawn bowls, looking for a sporting activity that promises much fun and enjoyment with a competitive element, then the friendly, welcoming atmosphere of our Bowling Club is the place to be.



M&B WOOD PLUMBING

Call Matt - 0418 319 357
mbwoodplumbing.au

Servicing Winchelsea & surrounds

- General maintenance & blocked drains
- Gas fitting & hot water service upgrades
- New homes & renovations



WE CREATE LANDSCAPING EARTHEN BUILDINGS

✓ **TRUST US FOR PROFESSIONAL AND RELIABLE SERVICES TAILORED TO YOUR NEEDS**

Plan, dig, load, move, build, spread, mix, plant, cover, cut, mow, snip, edge & rake

☎ Call Richard today! 044 451 3017

AlfordBuilt

New Homes, Renovations, Extensions,
Bathrooms, Decks & Pergolas

0408 583 362

stephen@alfordbuilt.com.au



REGISTERED
Building Practitioner

GREAT Bundle Deal on Bosch Hot Water... FROM ELGAS

Buy any Bosch Bluetooth continuous flow hot water model - 16Litre, 20Litre or 26Litre and **Receive \$100* in Elgas bonus LPG gas credits**

*For more details: www.elgas.com.au/appliances/bosch-applflow-16-20-26-lpg-bundle-sale

AND... for new customers, an additional \$80 WORTH OF LPG GAS CREDITS when you open a new LPG Gas account with Elgas**

**Further details can be viewed at www.elgas.com.au

Ask about the Elgas Easy Payment Plan - 12 months interest free*** on selected LPG appliances

***Further details can be viewed at: www.elgas.com.au/epp

Automatic tanker gas bottle refill OR gas bottle exchange refill is available for home or business....
Call today or visit our website for our many customer benefits and latest offers.

131 161
www.elgas.com.au

ELGAS

Lupton BUILDERS

SPECIALISING IN QUALITY



REGISTERED
Building Practitioner

- | | | |
|---------------|-----------------------|---------------|
| • NEW HOMES | • EXTENSIONS | • RENOVATIONS |
| • ALTERATIONS | • DECKS | • PERGOLAS |
| • CARPORTS | • VERANDAHS | • RE-GLADS |
| • BATHROOMS | • WINDOW REPLACEMENTS | |

LEIGH LUPTON
0438 840 104

CHRIS LUPTON
0407 681 514

LEIGHLUPTON17@GMAIL.COM

EST. 1977

Green Lead Electrical

Connecting you to a greener future

REC 23618

0467 097 101



Servicing Geelong & the Surf Coast

Specialising in all residential electrical work including:

- Switch board & lighting upgrades
- Outdoor lighting
- Electrical safety checks
- Energy efficient LED lighting
- Ceiling sweep fans & ventilation
- Energy saving advice

Phone Martin Wilkinson:

0467 097 101

greenlead@outlook.com

1132268-CG18-14

MET BUILDING & CONSTRUCTION

NEW HOMES | EXTENSIONS | RENOVATIONS

Ph: 0409 433 687

REGISTERED
Building Practitioner



1 March 2025

Trebeck Reserve, Winchelsea



1st Birthday volunteers



Last Saturday was the first birthday for Trebeck Reserve parkrun. Thanks to everyone who has participated, volunteered or supported our event in any way over the past year. Thanks to Helen and Kate for supplying the tasty treats to celebrate our first year.

57 participants completed the course through Trebeck Reserve this week. One person enjoyed their very first parkrun and 10 people recorded their Personal Best time for Trebeck Reserve. Congratulations to Amanda Worland, Maddie O'Callaghan, Brooke Robins, Ian Edwards, Graeme Holland, Tony Peck, Georgie Thompson, Bernadette Gibson, Anthony Keogh and Alette Rennie.

We had visitors from Wallaby Track, Geelong and Melbourne. This event was made possible by the following volunteers: Karen Richens * Don Smith *David Woodall* Murray Bennett * Neil McInnes*Kate McInnes*Ann Jones*Kristen Czerkiewicz*Helen*Woodall.

Further details of this week's results can be found at trebeckreserveparkrun.com.au/results

Please check out our Facebook page for today's photos and further information.

It takes a minimum of six people each week to safely conduct an enjoyable event. Please email trebeckreserve@parkrun.com if you are able to volunteer some of your time. Tasks are simple, sociable, fun and very much appreciated.

If you wish to join us any Saturday morning as a walker, runner or volunteer please complete the simple online registration at parkrun.com.au/register. This is free, only needs to be done once and can be used at any of the 5,000 plus parkrun events worldwide.

Well behaved dogs on a short hand held leash are welcome (no waist harnesses please)

You do not need to be a runner, wear fancy Lycra or the latest high-tech shoes. Around one third of participants walk the course.

parkrun was conducted at around 500 locations across Australia this week.



Vitality Tip

Shaina, One Body Chiropractic!

In today's world, we're constantly bombarded with the next best thing for longevity—supplements, superfoods, and the latest 'bio-hacks.' While these tools have their place, true vitality doesn't come from a pill or shortcut. It comes from something much more profound: connection.

The research continues to show that **strong relationships and a sense of belonging** are powerful predictors of lifespan and happiness.


Meaningful connections - whether with family, friends, or our community - help regulate stress, support emotional well-being, and even enhance physical health by keeping our nervous system balanced.

- So, if you're looking to boost your vitality, start with connection.

- Prioritise quality time with loved ones
- Engage in uplifting conversations
- Surround yourself with people who inspire and support you.


Remember all of this only becomes possible when you are looking after your health and wellbeing first.


At One Body Chiropractic, we believe in whole-body health—physically, mentally, and emotionally. Let's nurture our connections and thrive together!




Family Healthcare - Naturally through Chiropractic

Get out of pain and back to life.
Build a foundation for lifelong wellness.
Perform at your absolute best.



 www.onebodychiropractic.com.au
03 52672240 Shop 4/21 Hesse St Winchelsea

Here for your Vitality...



Casuarina Counselling Therapy
Time For You

Counselling to help find clarity, understanding and new ways forward for relief from distress of all kinds, including anxiety, depression, addiction, relationship issues.

Call 0493 988 150 to book appointment
Available at The Exchange,
32-34 Main Rd, Winchelsea



Lifeline

13 11 14



SUNNY GYM

GYM BUT JOYFUL

Strength, Mindfulness and Martial Arts in Winchelsea

Boxing NEW!

Kids Kung Fu

Group Exercise

Personal Training

Qi Gong

sunnygym.com.au



Moriac Veterinary Clinic

0447 781 089

PHONE 24 HOURS

784 Hendy Main Road Moriac

info@moriacvet.com

www.moriacvetclinic.com.au

HOURS // Monday - Friday: 8am - 5pm



Winchelsea
Medical Clinic

Located at 36 Main Street, Winchelsea 3241

For any enquires or bookings please contact the clinic on 5292 8028.
Or visit our website: www.winchmc.com.au

Opening Hours:
Monday - Friday 8:00am - 5.00pm
(Monday Evening Clinics available and selected Saturdays)



Available on the App Store

GET IT ON Google Play

Our clinic accepts online bookings via the app called HotDoc.
Download the app on the App Store or Google Play or head to our website.



Caring for families since 1883

"We are here to help you tell your loved one's story; however they want it told"



PH: 5221 4788

www.tuckers.com.au



45 Anderson Street, Winchelsea 3241 Tel 5267 2660 winchelseagolf.com.au

Winchelsea Golf Club

45 Anderson Street, Winchelsea 3241 Tel 5267 2660 winchelseagolf.com.au



Rachael Boddington

RESULTS: LADIES

MID WEEK - STABLEFORD 26/2/25

9 Hole Stableford (too hot for 18)

Winner: Sue Cuthbert 20 pts

R/up: Di Bartel 16 pts

NTP (8th): Elizabeth Alston

RESULTS: MENS

MID WEEK - WEEKLY STABLEFORD 26/2/25

13 PLAYERS

1st - Matthew Beauchamp (12) 38 points

2nd - Neil Hickman (11) 37 points C/B

Bdl - Greg Rigby (21) 37 points C/B

Bdl - Nick Stone (9) 32 points C/B

Ntp (2nd/11th) - Greg Rigby

Cam Parke

CLUB CHAMPIONSHIPS 2ND ROUND

DIAMOND WINDOWS TROPHY - STROKE 1/3/25

29 PLAYERS

1st - Matthew Beauchamp 79-12-67

2nd - Brent Kahle 75-7-68

3rd - Cam Parke 76-7-69 C/B

4th - Don Cuttler 85-16-69 C/B

BDL - Michael Bourdouvalis 101-31-70 C/B

BDL - Ben Alexander 77-7-70 C/B

BDL - Evan Partridge 91-21-70 C/B

BDL - Tavae Sauni 75-4-71 C/B

NTP (2nd/11th) - Ben Alexander

Golden Hole (15th) - Angus Heathcote

Next Saturday 8/3/25 - Club Championships Final Round Warren Stephenson Trophy.

We are chasing players for the Men's Pennant. If you're interested, please put your name on the whiteboard in the clubrooms. We have teams in Division 5 (7 players) and Handicap West (5 players). If you'd like to check the draw and Pennant information, please go to Men's Pennant - South West Golf Association

To clarify a few items:

Heat Policy: At 6pm, if BOM predictions for Winchelsea are 36°C or above, competition will be brought forward. To be included in the competition, tee off by 8.30am. Should the temperature reach 36°C before noon, the competition will be abandoned. This is in line with Golf Australia's guidelines.

Moveable obstructions: The Hawks erected to protect the greens from Corella damage are to be treated as movable obstructions. If hit, the ball is to be played as it lies. If it interferes in your swing or stance, it may be removed.

Thankyou to Greens Crew and Members: If you haven't had a hit lately, do yourself a favour, and get out there. The fairways have a cover of grass never seen before at Winchelsea during summer. The greens are rolling true and are recovering from Corella damage. The condition of the course is a credit to our greens crew and members, who turn up and put in weekly, to maintain and improve our course. A huge thank you to all involved.

Come along and have a great round of golf with a fantastic group of people, we pride ourselves on being welcoming and enjoying all aspects of golf, both the game and social.



74 Dennis Street, Colac

5231 1861



Water Supply Specialists

WATER SOLUTIONS

ALL THINGS WATER:

- PUMPS • PIPES
- FITTINGS • TANKS
- POOL CHEMICALS
- IRRIGATION
- WATER PURIFICATION
- SOLAR • REPAIR

SES



A family business operating for more than 138 years, HF Richardson services an extensive client base throughout the greater Winchelsea area. Our success is built on a long history of innovation and while we've moved with the times, our basic values of honesty, trust and integrity have remained.



Eric Foster
0429 499 924
Sales Executive



Ken McDonald
0418 524 150
Licensed Estate Agent

**Residential | Rural Lifestyle
Agricultural Farms**

HF RICHARDSON

PROPERTY

www.hfrichardson.com.au



Life's busy. Let us help you.

Contact us today

We can help you with:

- Buying your first or next family home
- Saving for your first home
- Residential Investment Lending
- Refinancing from your current lender
- Home loan reviews
- Pre-approvals

With extensive banking experience and financial expertise, we'll help bring your financial goals to life.



Ebony Berg
0400 784 249



Josie Kavenagh
0409 564 192



Community Bank
Winchelsea and District

Winchelsea Star

ISSN 2202-6851



9 772202 685002

Since 1977

DEFIBRILLATORS IN WINCHELSEA

**Accessible to the public
24 hours a day**

The Winchelsea Lions Club has compiled a list of public access defibrillators in Winchelsea. If anyone knows any others with 24 hour public access, please let Linda Carter know 0439 817 263.

Ambulance Victoria

33 Willis Street

Bendigo Bank

11 Main Street

Globe Theatre (Side entrance)

17 Willis Street

Hesse Rural Health

8 Gosney Street

Men's Shed

51 Hesse Street

Netball Courts

Eastern Reserve Hopkins St

Senior Citizens Club

36 Harding Street

Uniting Church

33 Hesse Street

Winchelsea Bowls Club

Hesse St,

Winchelsea Cemetery,

McConachy St

Winchelsea Golf Club

13 Anderson Street

Winchelsea Primary School

Main Street

Wurdale Memorial Hall

220 Wurdale Road

