

anna  
xxxyyyzz

**liminal space**

1

**discover your path**

7

**an amoeba**

13

*Being a designer,  
I feel called to serve people fearlessly,  
advocating for the right to exist in  
beautiful spaces.*

**street, art, eats**

17

**UN on the MOVE**

23

# liminal space

At the start of 2020, during the pandemic, I was inspired by a friend who reminded me that life is valuable and everything we do should value life.

Depicted throughout this story of liminal space.. existing between the desire for pre pandemic and the discomfort of present pandemic.. this project breaks down the anatomy of lungs as a poetic response to breath and life.

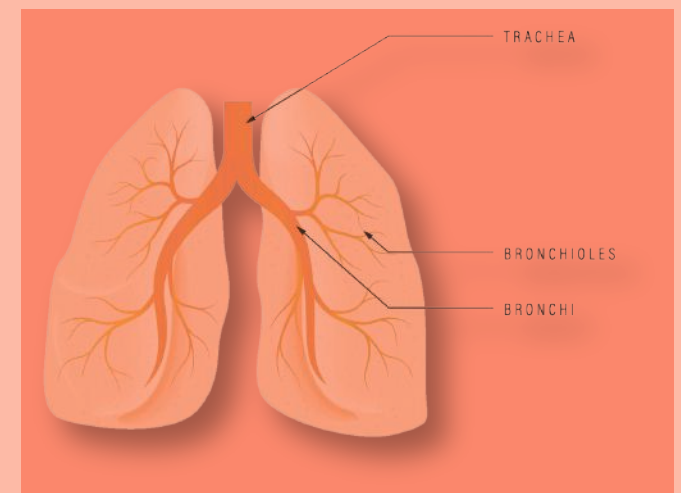
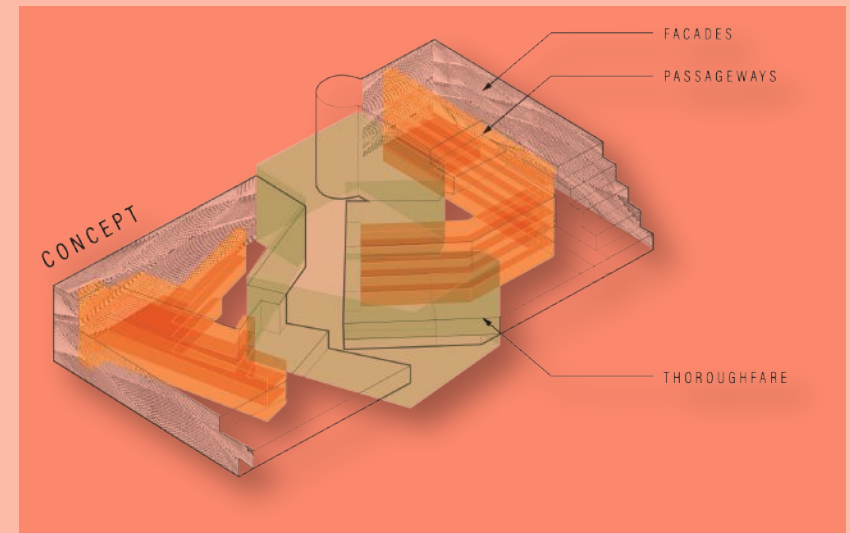
Throughout this professional studio exercise, which was later presented to Cincinnati Center City Development Corp (3CDC), it was important to consider the experience of the thoroughfare as it is maintained between Ludlow and Howell.

My solution creates a vibrant courtyard, and safe and welcoming entrance to the public users, as they travel from the adjacent Clifton Plaza.

Incorporating vegetation on the generously allotted roof space was also vital, as we have learned from quarantine the importance of accessible outdoor green space in relation to mental and physical well being.

In the spirit of valuing life, it was important to include a materials palette which facilitates the warmth of life.

As the bright colored brick sweeps around the facade, and the warm tones of wood colors the balconies... the division between public and private is softly emphasized, while still creating a warm space for residents to just *b r e a t h e*.



1

*a multi unit housing project*









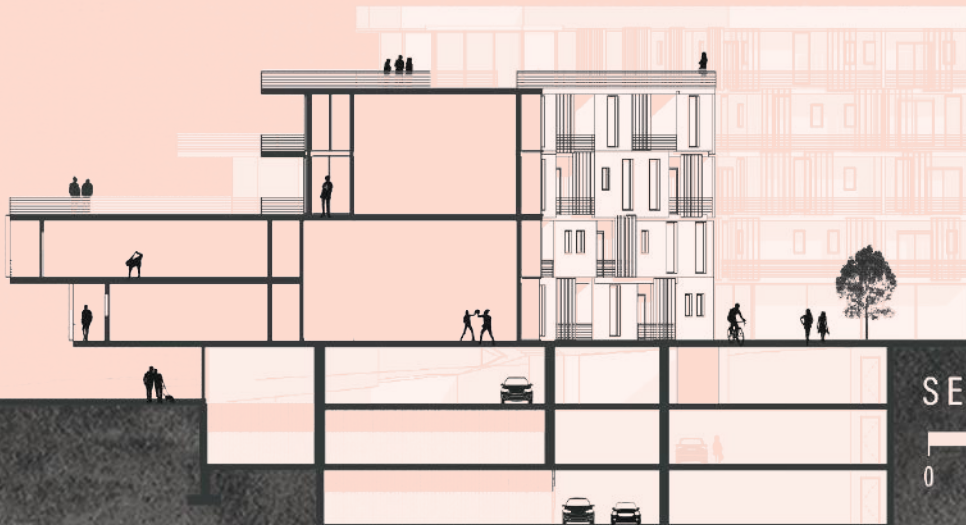
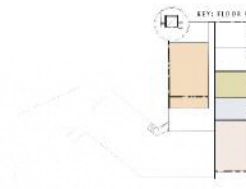
TYPICAL UNIT LAYOUTS:

STUDIO (80 ea. ± at 650 sf)

1-BED (26 ea. ± at 850 sf)

2-BED (10 ea. ± at 1260 sf)

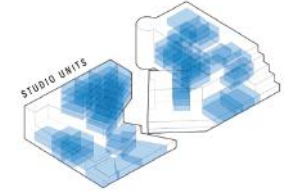
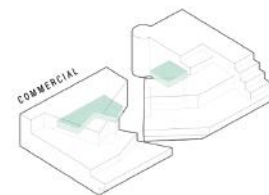
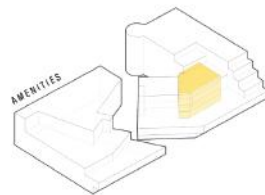
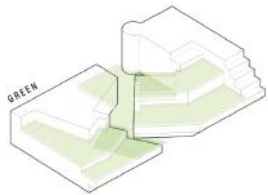
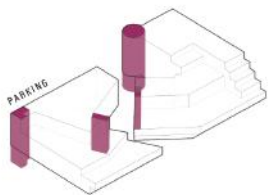
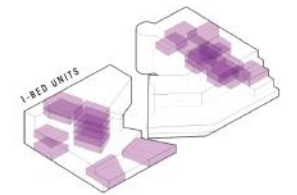
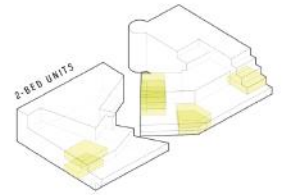
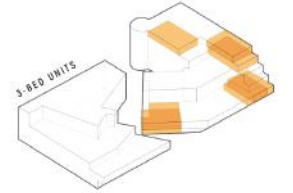
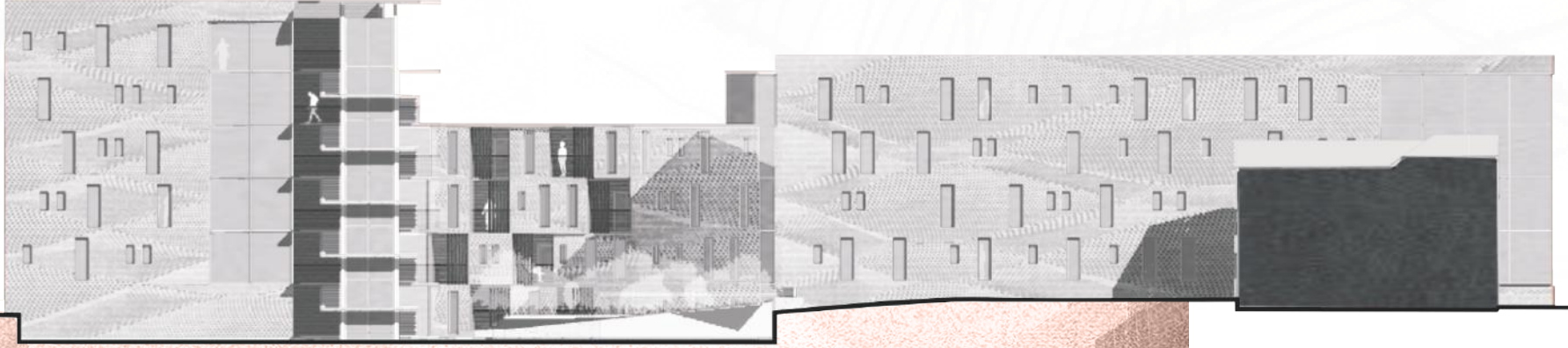
3-BED (8 ea. ± at 1540 sf)



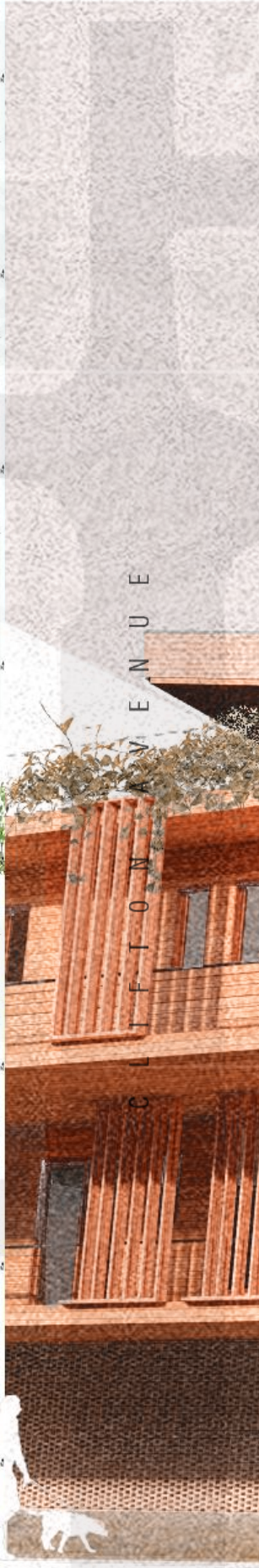
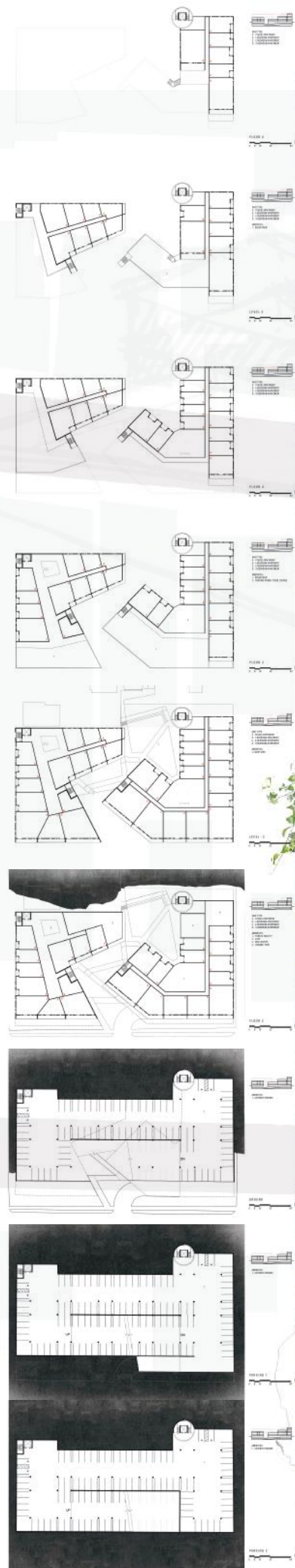
SECTION S-N











SITE PLAN  
 0 8' 16' 32' 64'









# discover your path

Discover Your Path (DYP) is a business that provides counseling services. The client wanted a logo that would represent their approachable and calm counseling style with the individual path and growth journey they guide their own clients through.

The bright greens were chosen to convey the vibrancy of her practice and to distinguish her brand from corporate competitors.

While the logo conveys professionalism through simple shapes, the rounded corners welcome the client to a warm and inviting practice for anyone who may be seeking counseling services.

The DYP logo showcases various images including but not limited to a protective motherly figure, a tree, a road with two directions, and of course a D, Y and P.

Further strengthening the brand of this counseling firm, the logo was fitted to customize a unique pattern to be displayed on any type of stationary.

This is a showcase of my additional interests in logo and brand design.





**DISCOVER YOUR  
PATH, LLC**

counseling services

**SUSAN L. HENDRYX**

*MA, LPCC-S*

SusanDiscoverYourPath@gmail.com

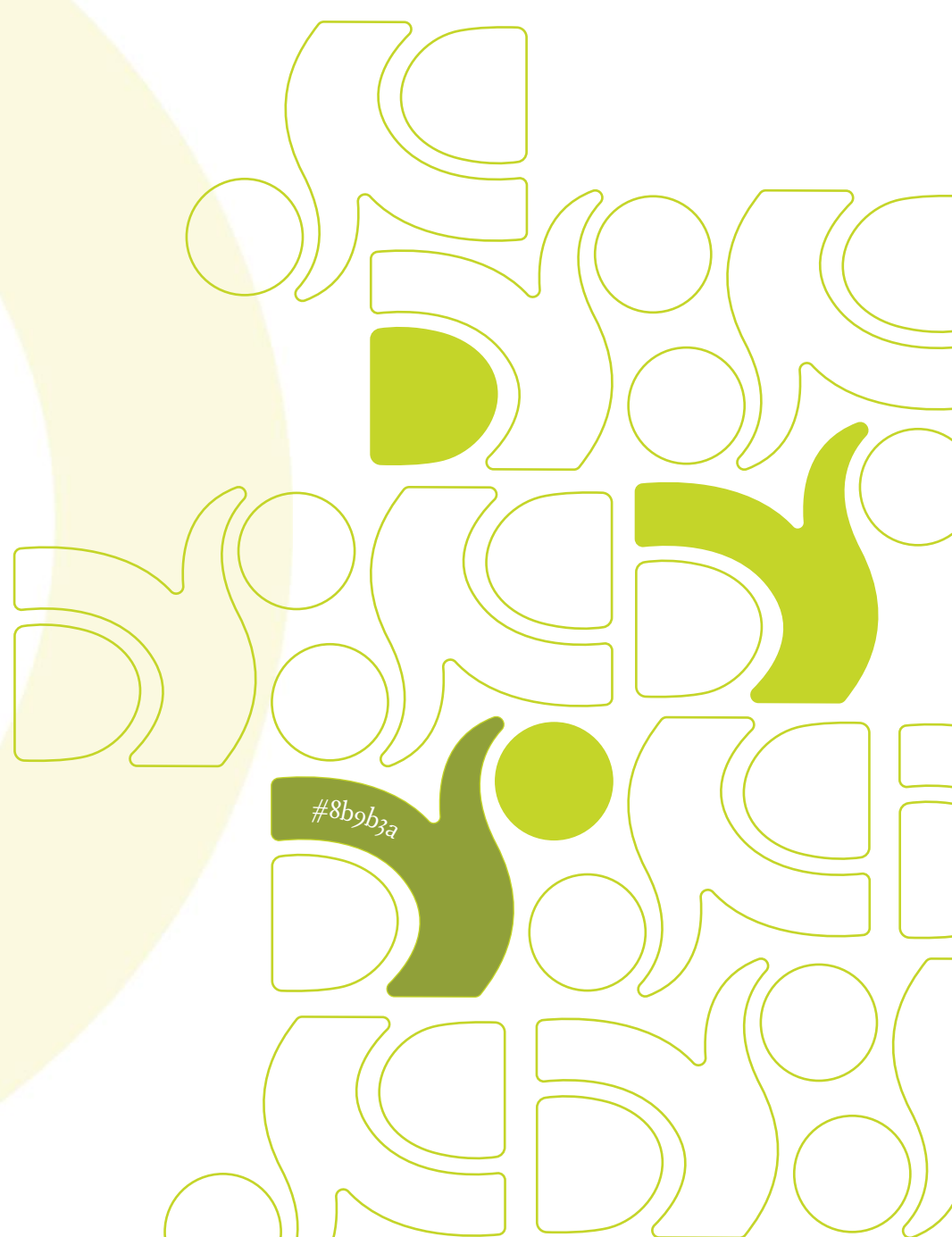
513.899.1882







**DISCOVER YOUR  
PATH, LLC**





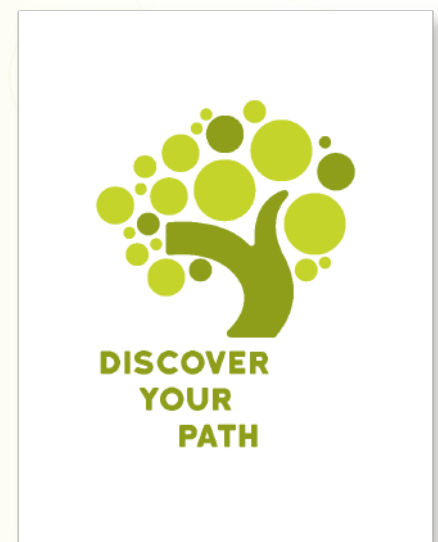
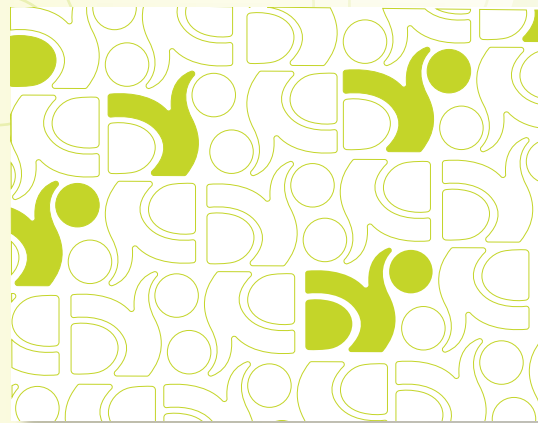
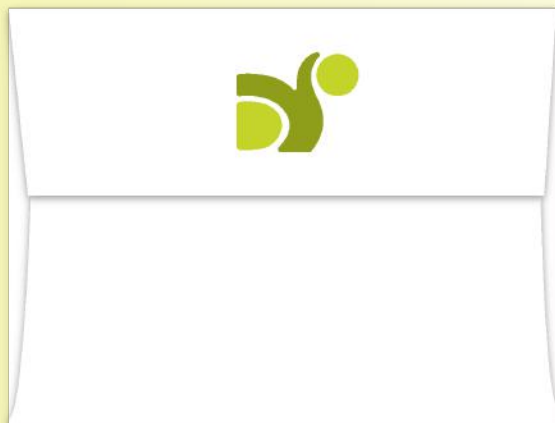
"the secret of change is to focus all of your energy not on fighting the change but on building the new." - socrates

# DISCOVER YOUR PATH

counseling services

Change can be beautifully transformative and healthy but it is hard work! Together, we can create a plan that will enable you to honor the pain and empower you to move forward to recreate your best life.

TAKE YOUR NEXT STEP [HERE](#)



DISCOVER YOUR PATH



**DISCOVER YOUR  
PATH, LLC**

counseling services

**SUSAN L. HENDRYX**

*MA, LPCC-S*

[SusanDiscoverYourPath@gmail.com](mailto:SusanDiscoverYourPath@gmail.com)

513.899.1882



in partnership with Sydne Blackburn

# an amoeba

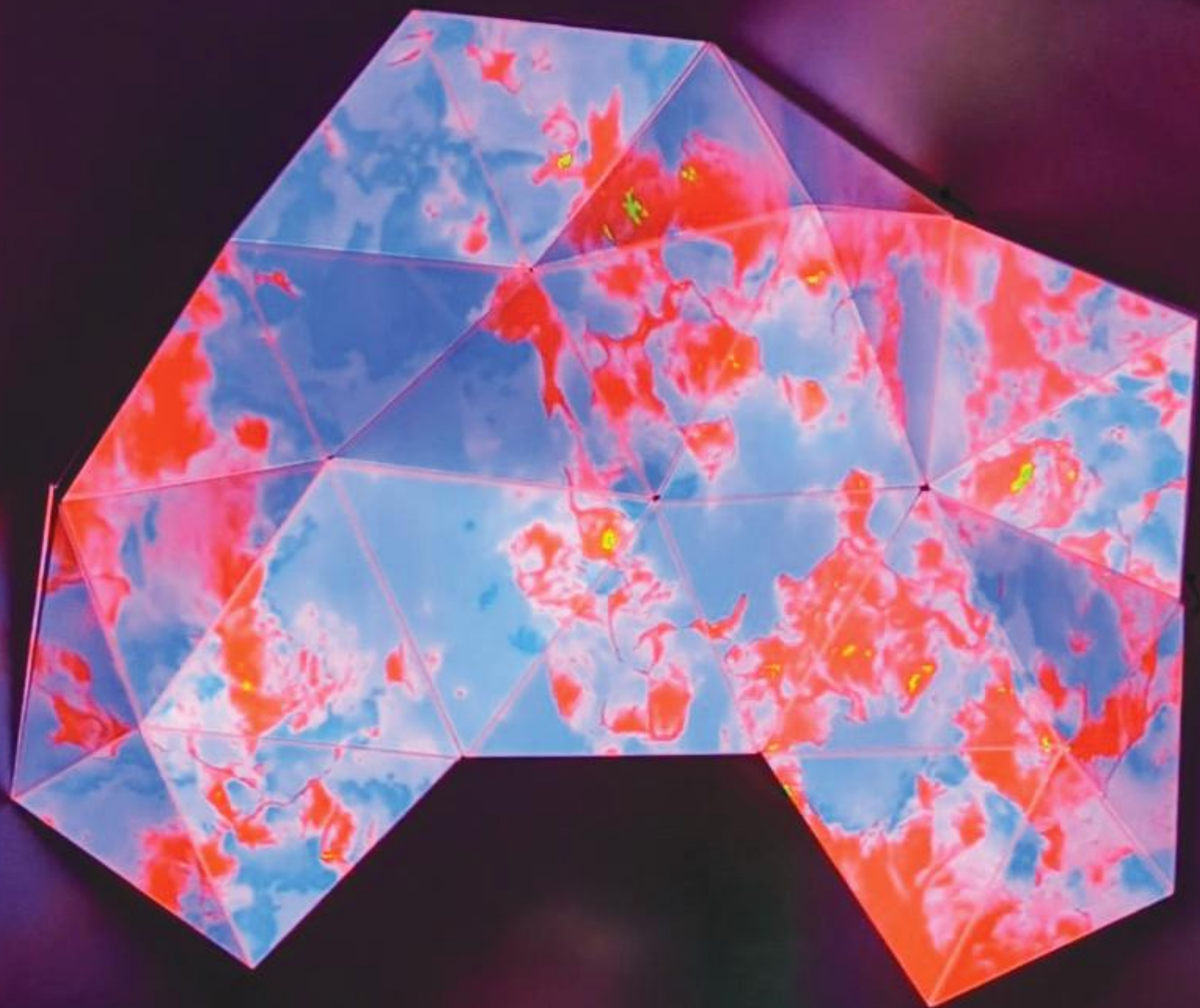
In collaboration with creatives at Alice, a bar located in Over-the-Rhine, Cincinnati, Ohio, this installation went up as a preview for larger projects in the designated discotheque space.

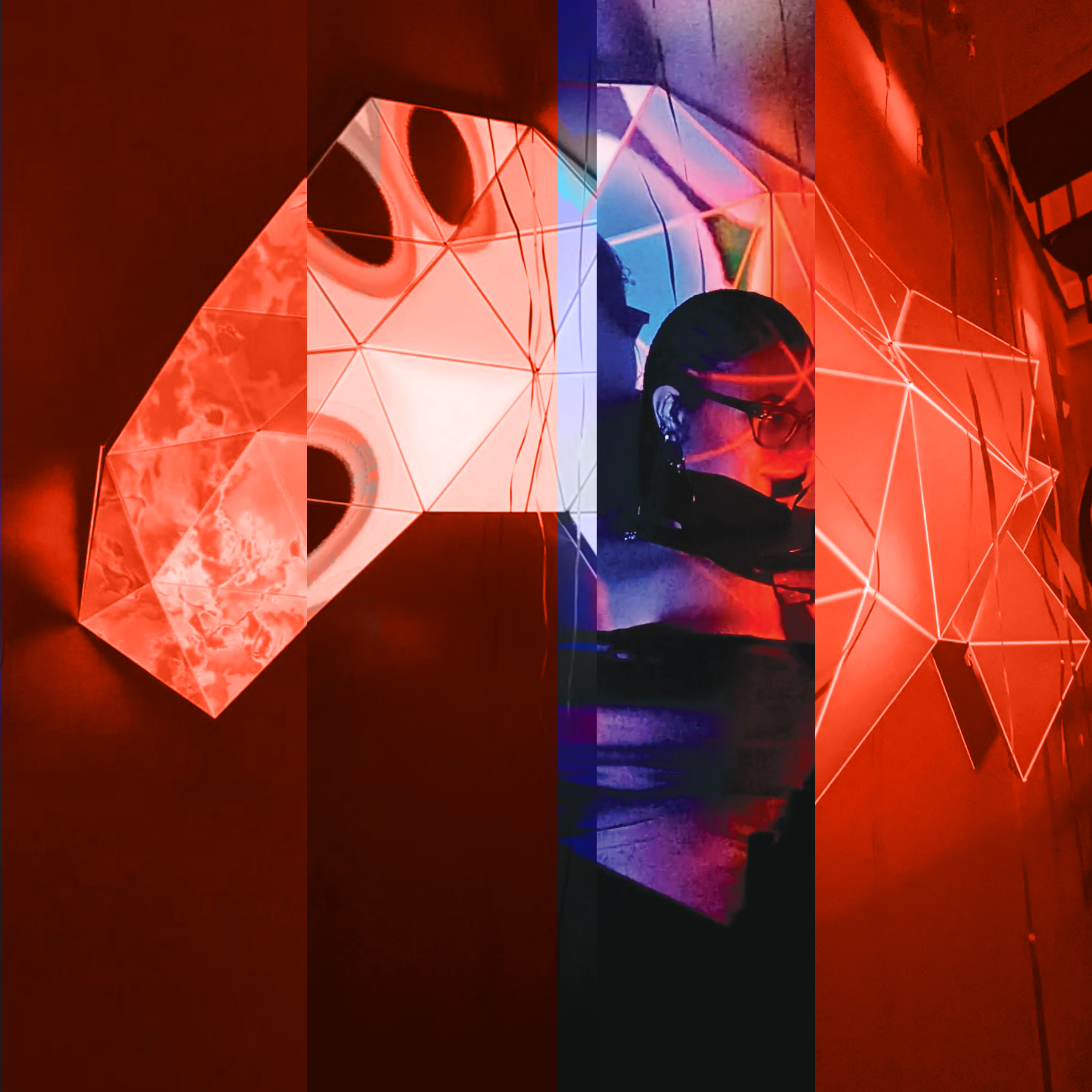
The installation was put together with the Olga Kit, which came with various triangle configurations, and connectors.

Programs used for this installation included:

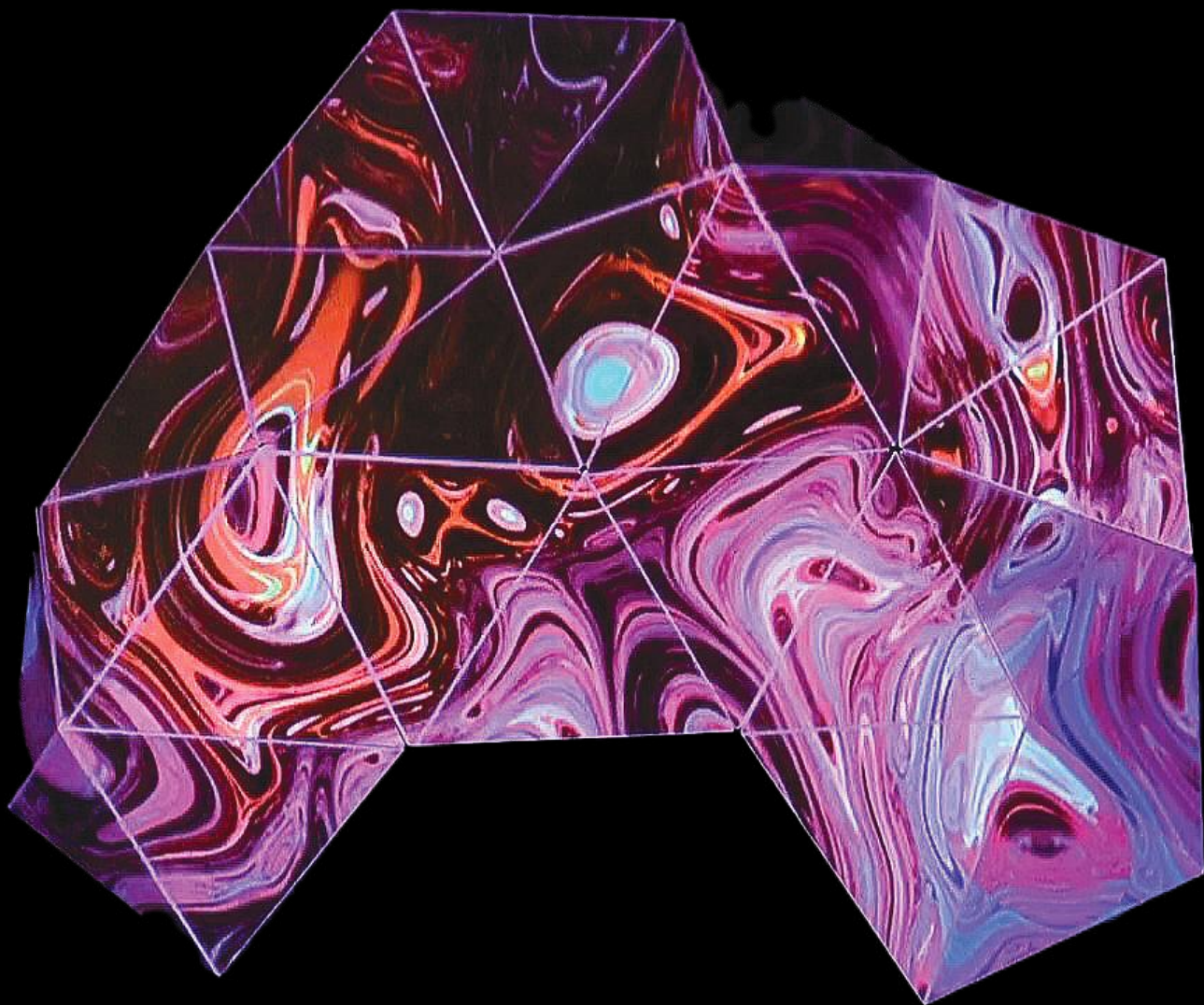
- \* Heavy M
- \* Synesthesia
- \* Arena











# UN on the MOVE: welcome center

The mission: to create a space for conversation. Where opposing/ overlapping/ and agreeing perspectives and ideas, are woven in a space that bridges the divide between Mexico and US; Officer and Refugee; Status Quo and Creativity.

UN on the Move fuses research, simulation, and intuition propelling a re-imagination of welcoming refugees: Emphasizing the story of migration and personal history, while deconstructing the historically accepted means of discussing the refugee crisis.

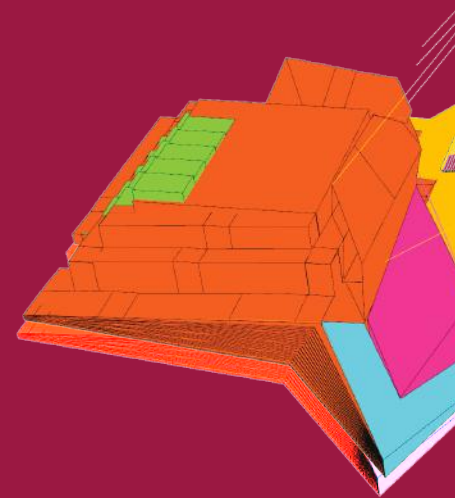
In this space, situated in Nuevo Laredo, delegates and refugees alike are stripped of their titles and offered proximity and compassion for the human experience.

This solution exists as a metaphor for migration.. hence the Monarch Butterfly.. underlining the universal experience of moving from place to place, and emphasizing the need for unobstructed mobility.

Fluidity is created between inside and outside. A constant connection to the outdoors for safety, and representative of the rhythm of breath and life.

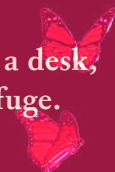
A weaving pattern informs the offices where officer and refugee would sit together in an intimate living room space, to talk together.

This re-imagination of what an office should be, challenges the power dynamic of a desk, and makes for a more compassionate space to talk about the gravity of seeking refuge.



17

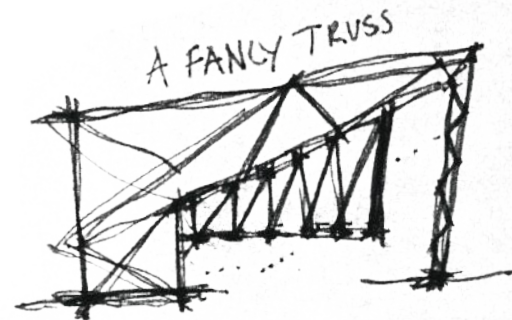
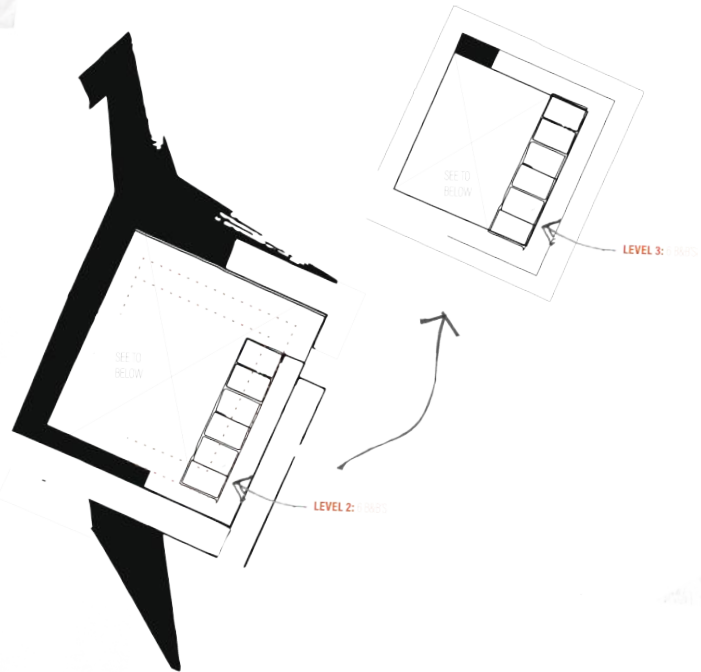
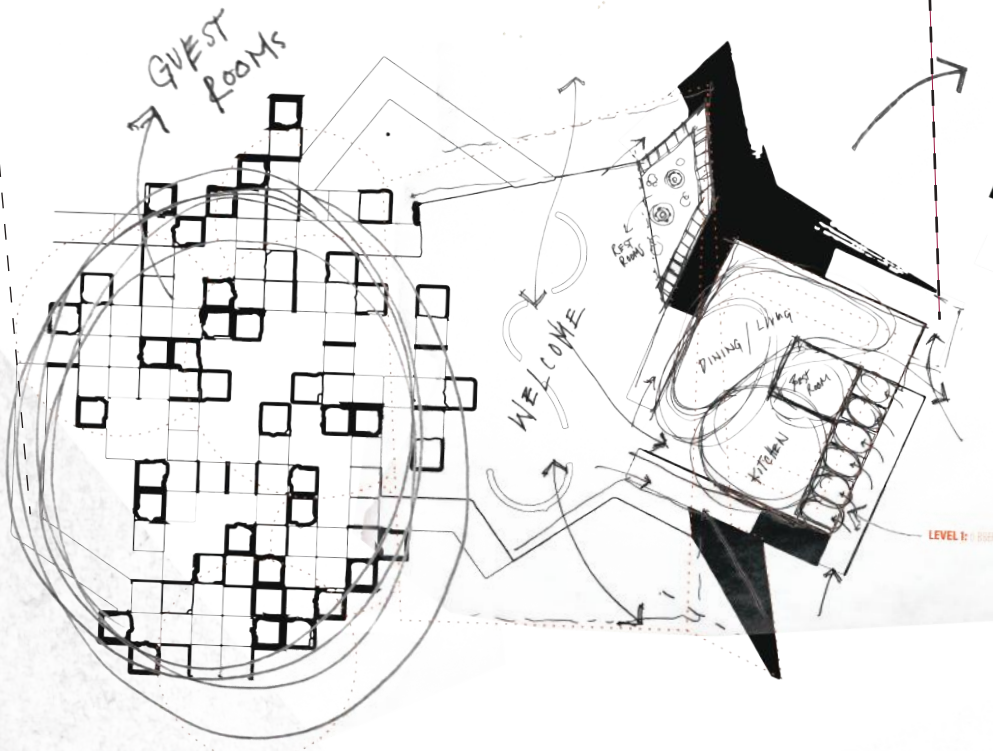
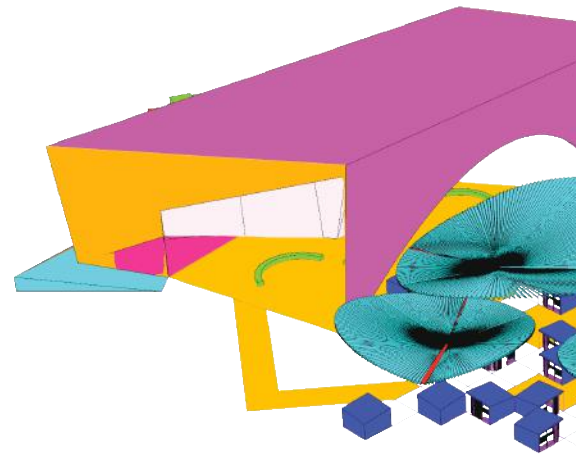
*a place for gathering project*



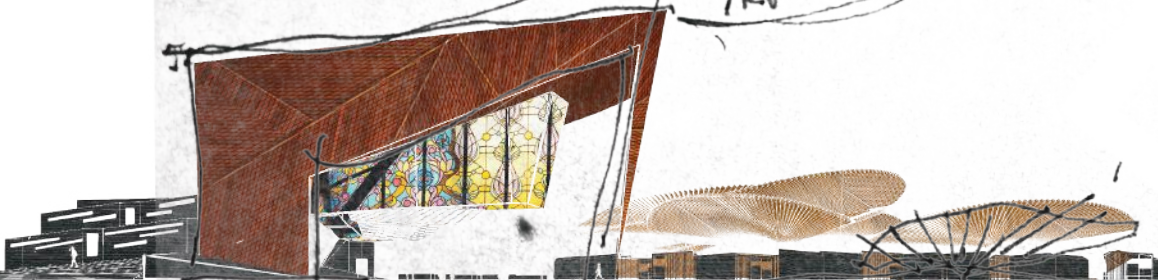
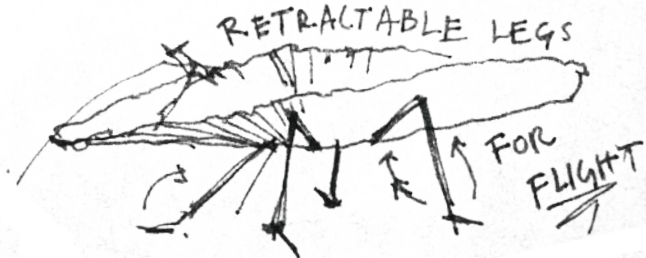




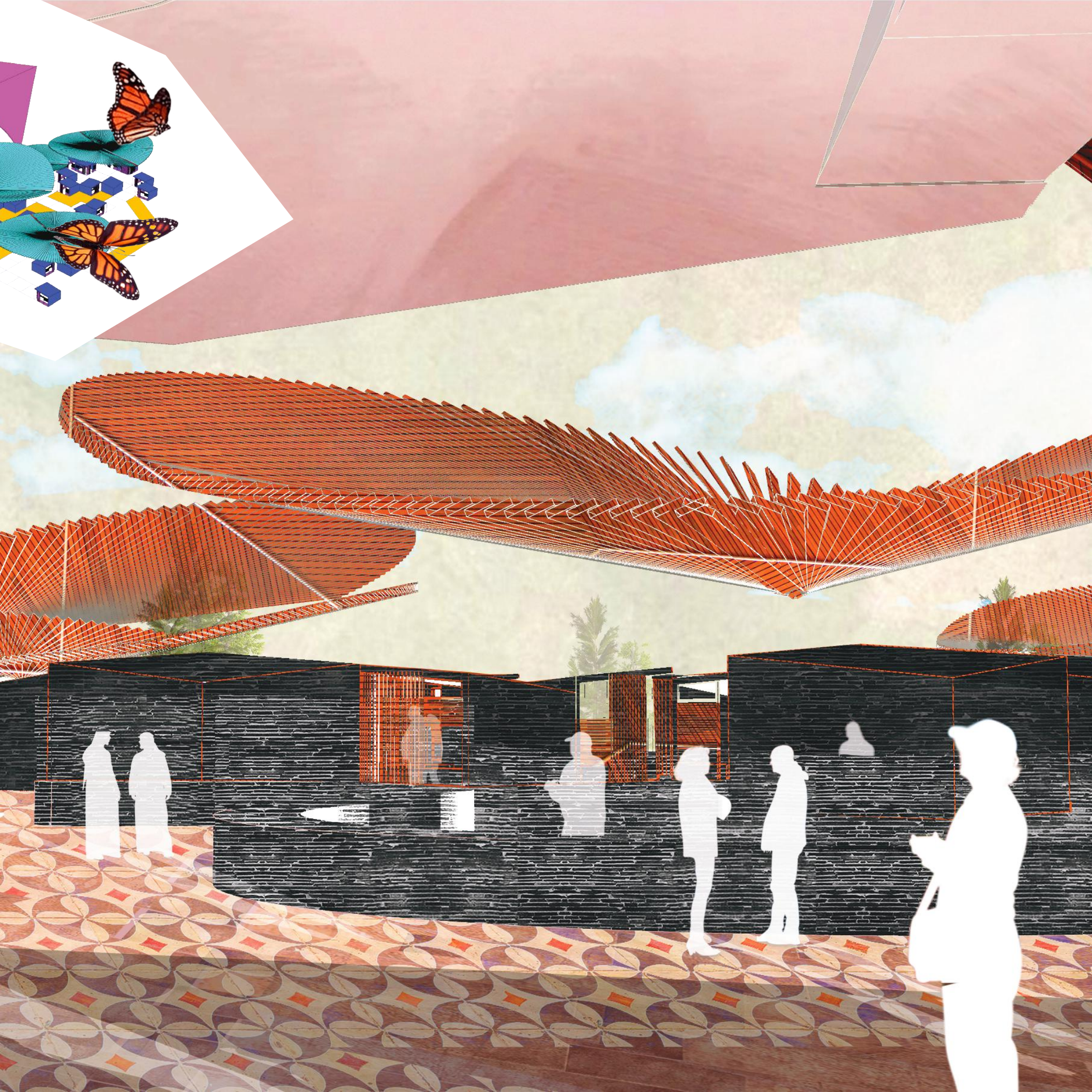




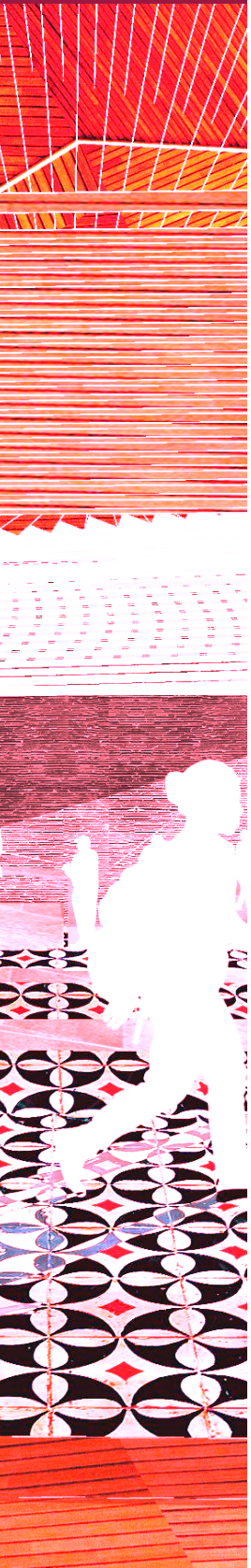
TRUST ME... IT WORKS



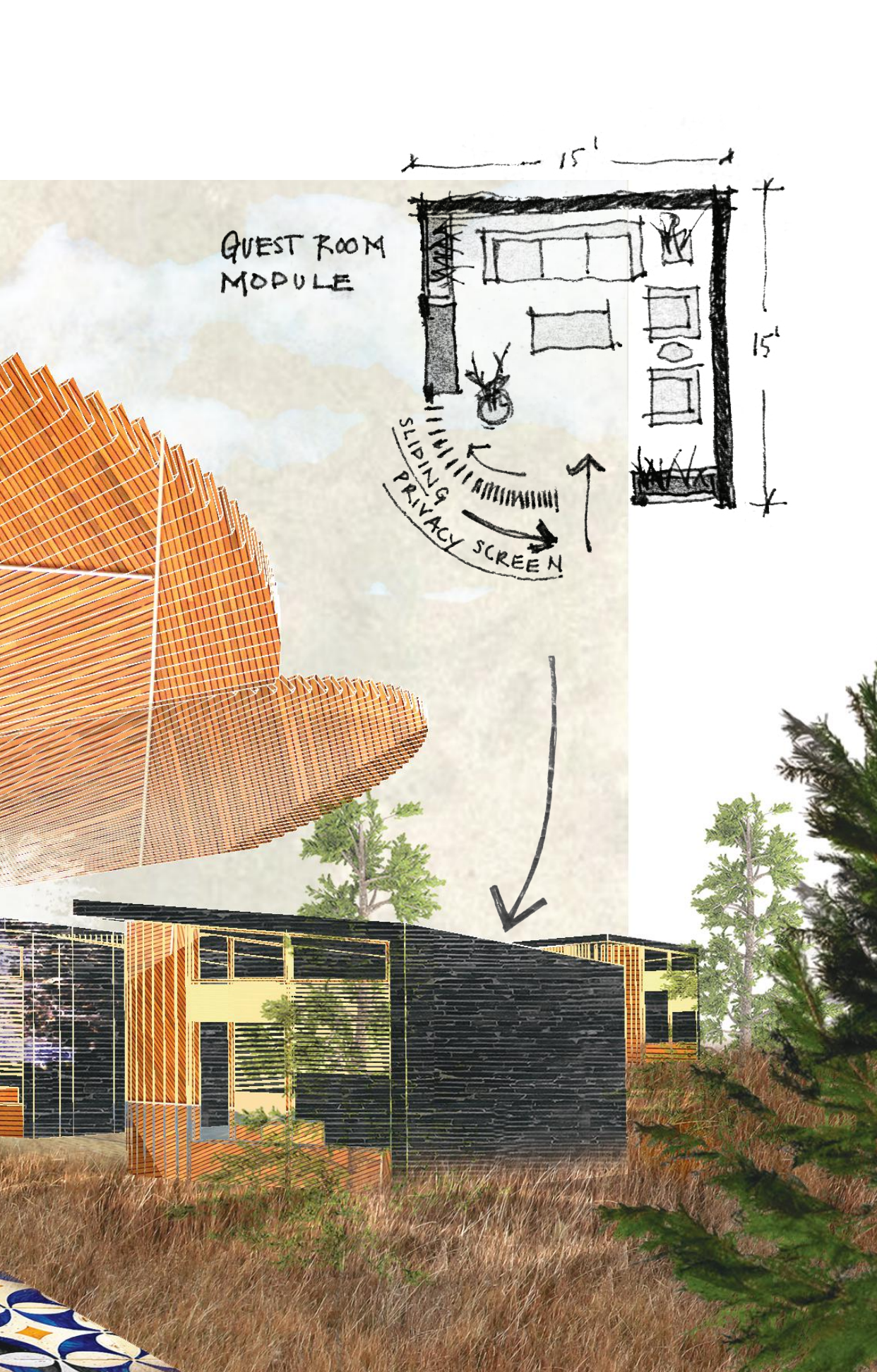














in partnership with Grace Stiles:

# street, art, eats

An established city development organization known as 3CDC was planning to execute a number of parklets throughout the city of Cincinnati.

Parklets, also known as “streeteries,” are small sized, off-sidewalk installations which accommodate patrons outside of the enclosed space of a bar or restaurant.

In the inner city, off-street outdoor patios are scarce, so the street is the natural vector of the spillover.

To kick start this modular parklet design, various origami forms were folded to inspire a device that would have the capacity to elegantly shape space allotted for a temporary outdoor seating area.

This design primarily focuses on customizability for restaurant owners, exhibited by the 3 modules that can be configured into any sequence.

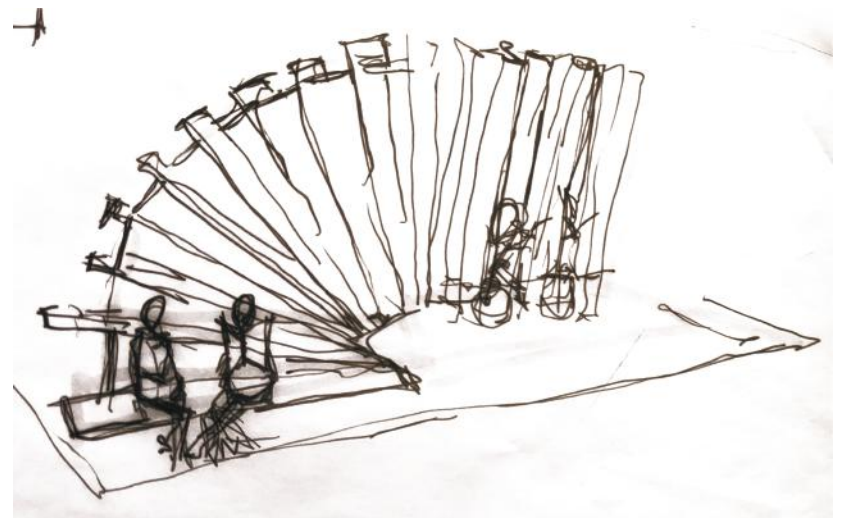
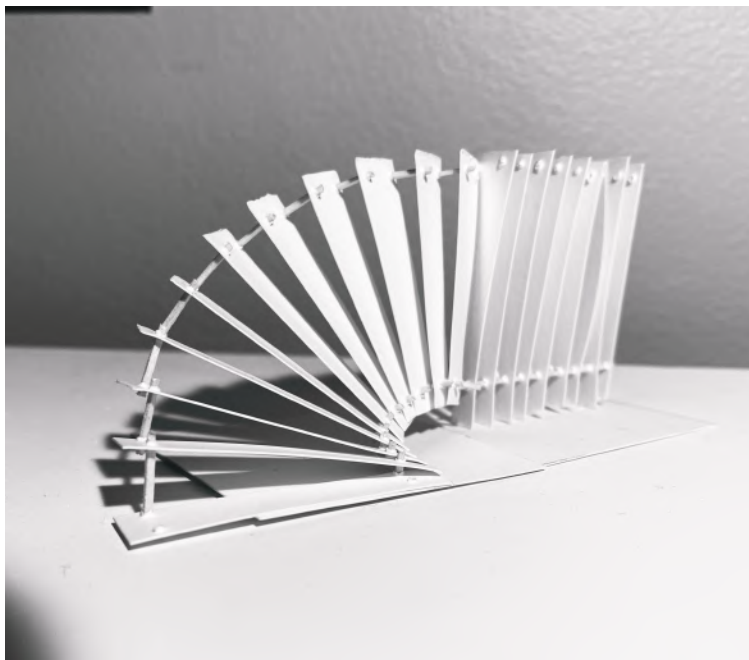
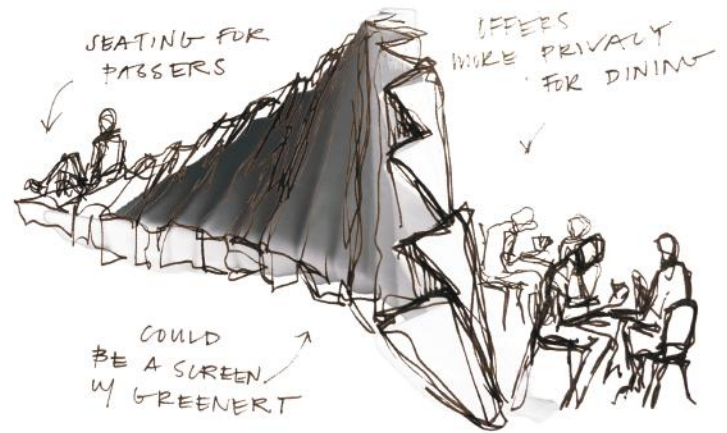
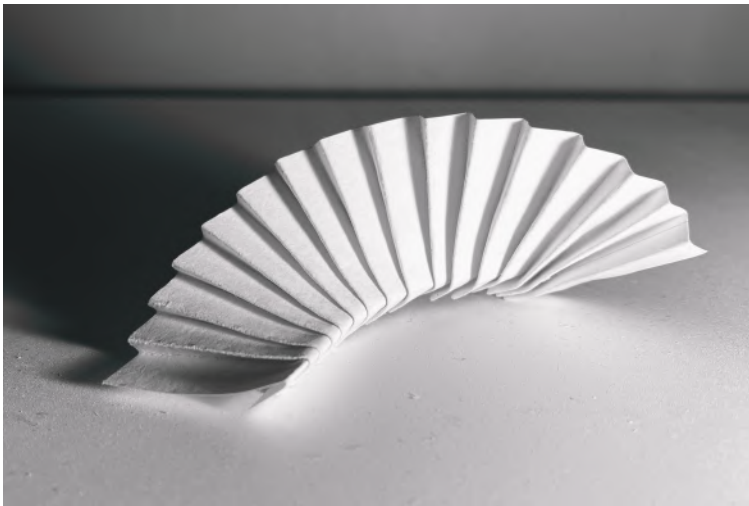
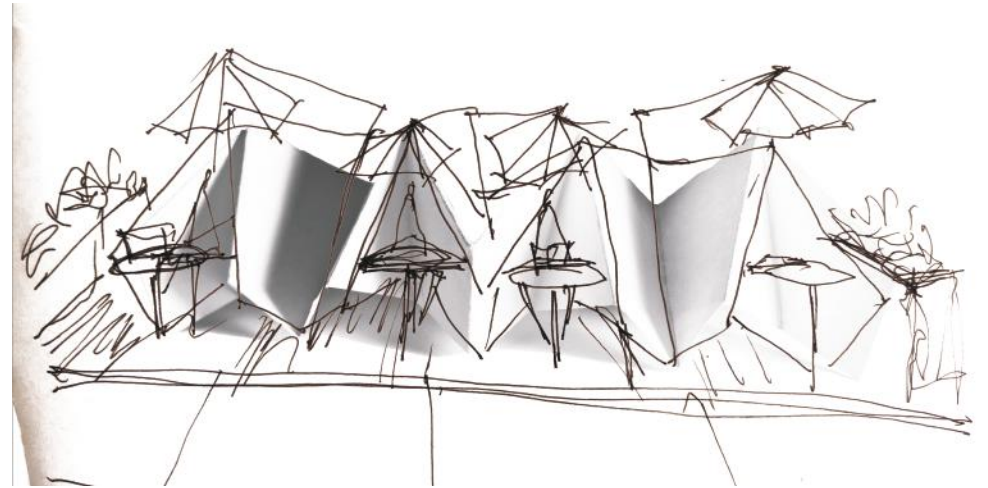
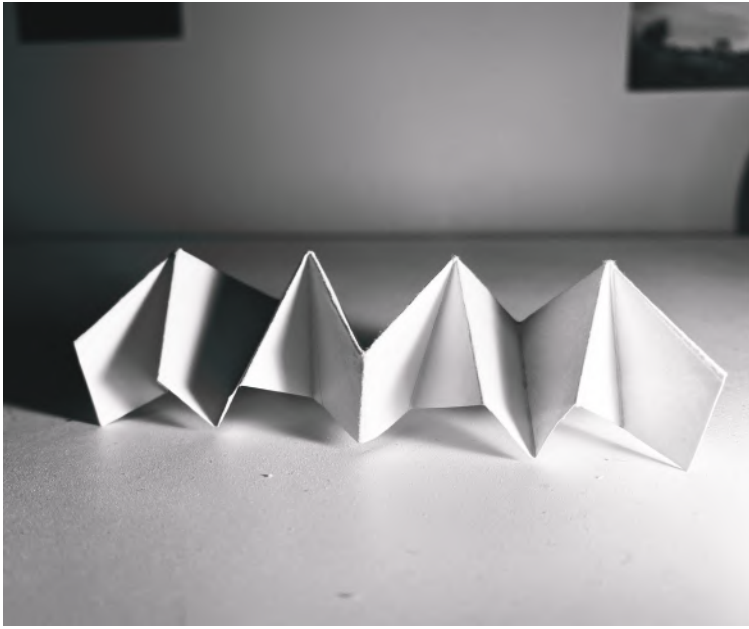
Additionally, these modules would establish an identity for parklets in Cincinnati that would be recognizable and instagramable.

By using origami to influence this solution, we were able to imagine a functional artwork that is fluid, and temporary, accompanied by a dash of permanence, represented by the industrial metal and natural wood material.

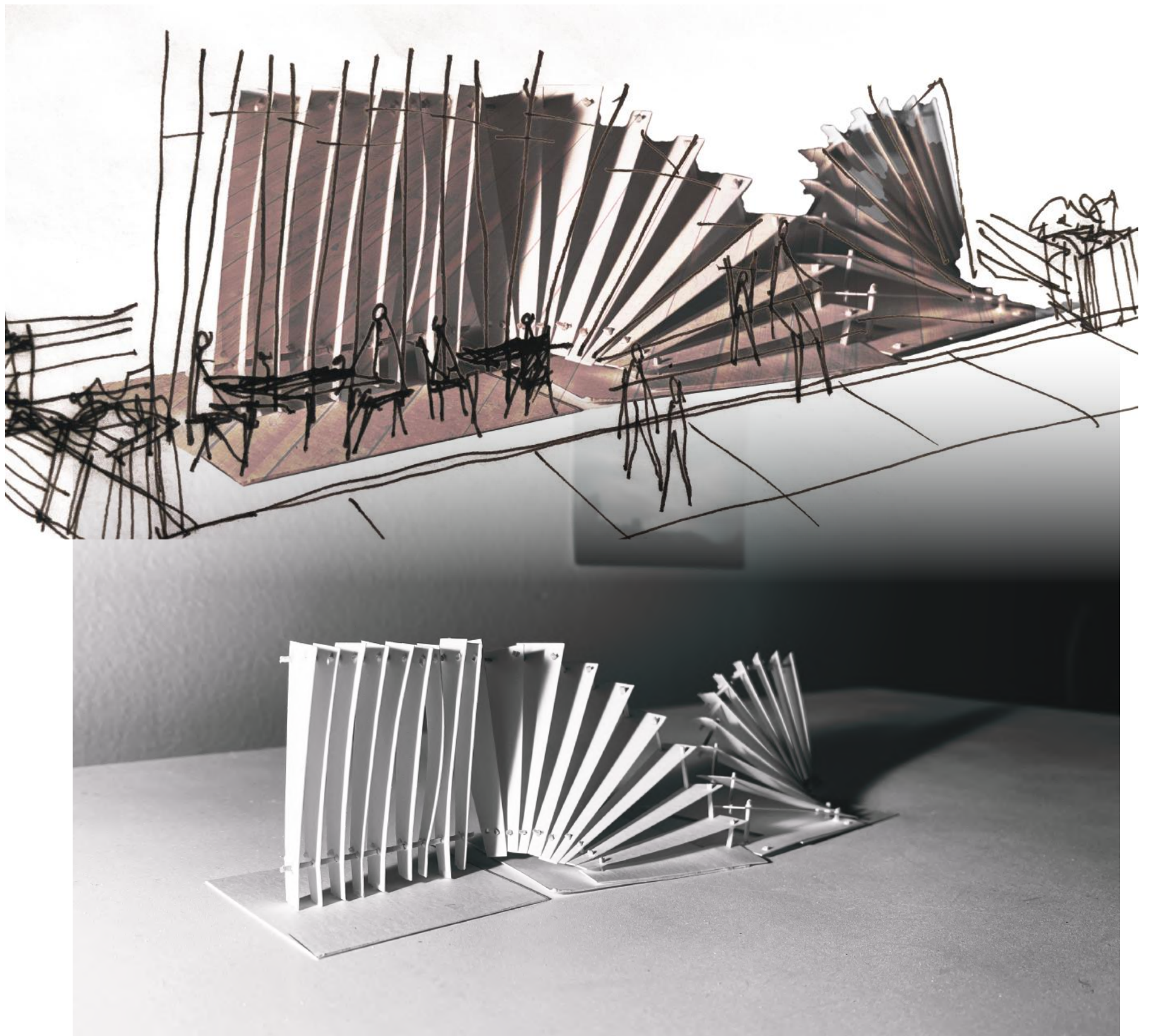


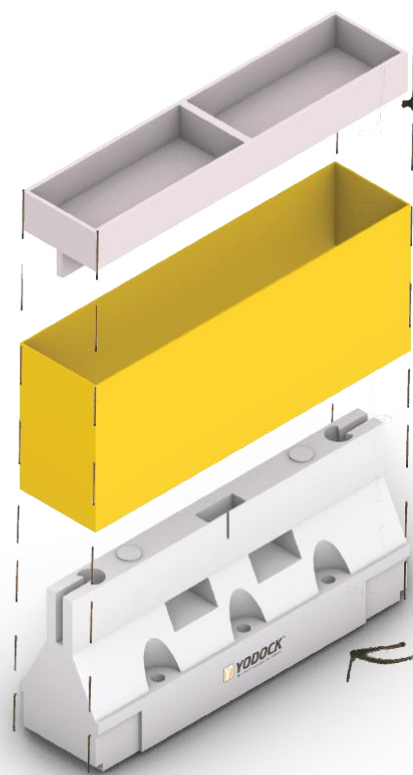








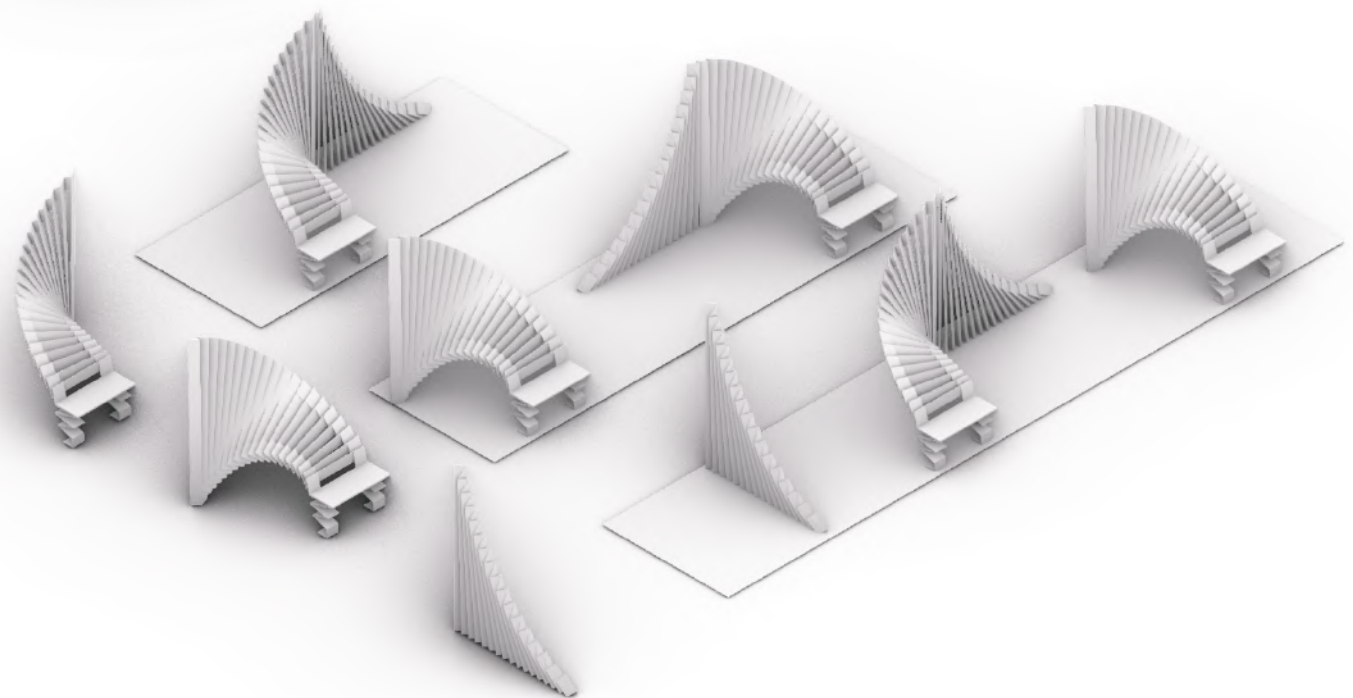




MAKESHIFT  
PLYWOOD  
PLANTER

CUSTOM  
METAL CASING

YODOCK  
BARRIER



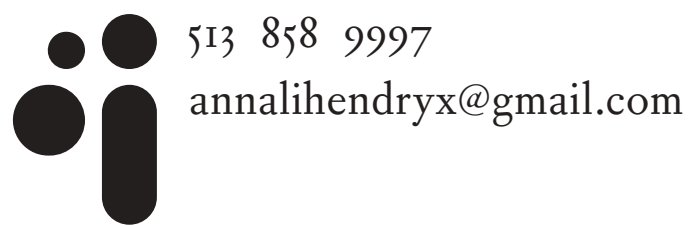












513 858 9997

[annalihendryx@gmail.com](mailto:annalihendryx@gmail.com)