

GENIUS HAWAII'S DESTINATION EXPERT OAHU

TEAM HAWAII

MEETING PLANNER LOOKBOOK & NOTES

THE PARTNERS



Mike Murray

CMM, CMP, CASE

Peerless Host Hawaii

mike@peerlesshost.com

808-265-5107

www.peerlesshost.com

Peerless Host Hawaii is Hilton Hawaiian Village's dedicated, on-site, **Destination Support Services** company. Oahu Genius works side by side with Mike on all major activities for Hilton's group clients.



Eddie "Eke" Keliinohomoku

President

ES Holdings

e.moku@gotourshawaii.com

+1 (808) 215-1296

www.hawaiitours.com

Eke Keliinohomoku is the President of ES Holdings, the parent company behind Go Tours Hawai'i, Hawaiitours.com, and Go Source Solutions. Today, he leads multi-island tourism and travel ventures that blend authentic local experiences with modern systems, technology, and scalable operations, helping redefine how visitors experience Hawai'i.



Lawrence “OG” Kim

Hawaii Destination Expert

Oahu Genius LLC

lawrence@oahugenius.com

808-799-5747

www.oahugenius.com

Lawrence Kim is the President and CEO of Oahu Genius, a premier Hawaii-based destination management company specializing in large group planning and transportation logistics. With a strong foundation in Hawaii's transportation industry, Lawrence brings years of hands-on experience to his leadership role. He honed his skills as Vice President of E Noa Corporation and the Waikiki Trolley, one of Hawaii's largest and most respected transportation companies, which proudly marked its 50th anniversary in 2024. His deep understanding of Oahu's infrastructure and logistics makes him uniquely equipped to manage complex travel and event arrangements across the island.

Today, Lawrence works closely with the Hawaii Visitors and Convention Bureau's HVCB Meet Hawaii team, playing a key role in promoting the islands as a premier destination for conferences, incentive trips, and large-scale programs. His collaborative efforts help ensure seamless experiences for organizations considering Hawaii for their events. Widely regarded as an up-to-date destination expert, Lawrence continues to shape the way groups experience Oahu, blending operational excellence with a genuine passion for Hawaii's culture, hospitality, and aloha spirit.

TRANSPORTATION



AIRPORT SHUTTLE

We believe that your attendee's Hawaii experience begins the moment they land. Welcoming each person with a high touch of Aloha is what we do best.

- Flight monitoring
- Individual confirmation/communication
- Secured meeting location at the airport
- Friendly meet & greet staff members
- Fresh flower lei greeting
- Private vehicle fleet exclusive to group



APPROXIMATE FLIGHT TIMES:

U.S. West 5 hours

U.S. East 8 hours

West Canada 6 hours

Australia 10 hours

New Zealand 8.5 hours

Korea & Japan 8 hours

Europe 16 hours

**FUN
FACT**

We have direct access to the newest fleet of luxury, made to order, motorcoach buses on the island of Oahu. Introducing the Mercedes Tourrider! More arriving in late 2026 & 2027.





CITYWIDE TRANSPORTATION

- Planning, routing, permitting, staffing & branding for groups that have very large transportation needs for their program.
- CHEST Annual Meeting, 7000+ attendees transported daily for 5 days with a continuous shuttle to the convention center.
- Pearl Harbor Parade week, 4500+ students transported daily for 5 days.
- NCORE Conference, 5000+ attendees transported daily for 5 days with a continuous shuttle to the convention center.
- Pokemon World Championship, provided a continuous shuttle for 3 tournament days that were open to the public. Moved approximately 5000+/day.

STAFFING



SERVICES



- **General & Heavy Labor**
- **Registration Desk**
- **Safety & Security**

BEACH PROGRAM



- We have exclusive access to the equipment and permits to do beach events at the famous Duke Kahanamoku Beach in Waikiki. **This means that all beach programs there have to go through us, might as well work with us direct!**
- We have access to the largest boat company in Hawaii and operate on the only pier located conveniently in Waikiki.
- We have a surf instructors and a water safety team exclusive to us.
- We have a SUP Yoga instructor exclusive to us.



SAMPLE ITINERARY

- 1000+ attendees
- Exclusive reserved area
- Chaise lounges & umbrella set up
- Towel service
- Water & sunscreen station w/light snacks
- Shave ice station
- DJ music tent
- **Water toys:** Aqua Cycles, Kayaks, & Stand Up Paddle boards.
- **Team Building Exercises:** Canoe Race, Tug-o-war, Volleyball Tournament & Boat Building
- **Optional Tours:** Turtle Canyon Snorkel Sail, Group Surfing Lessons, & SUP Yoga Class
- Our “Beach Program” is fully customizable to fit groups of all sizes.









ENTERTAINMENT











**FUN
FACT.**

All private firework shows at the Hilton Hawaiian Village must be permitted and done through Peerless Host Hawaii. It is the perfect way to end a special private dinner!







**FUN
FACT**

We planned and secured the permits for Hawaii's largest aerial drone show behind the Hilton Hawaiian Village for the World Pokemon Championship Event.

CUSTOM DECOR







Dinner

En Blanc

HONOLULU



CHAMPA TAITTI

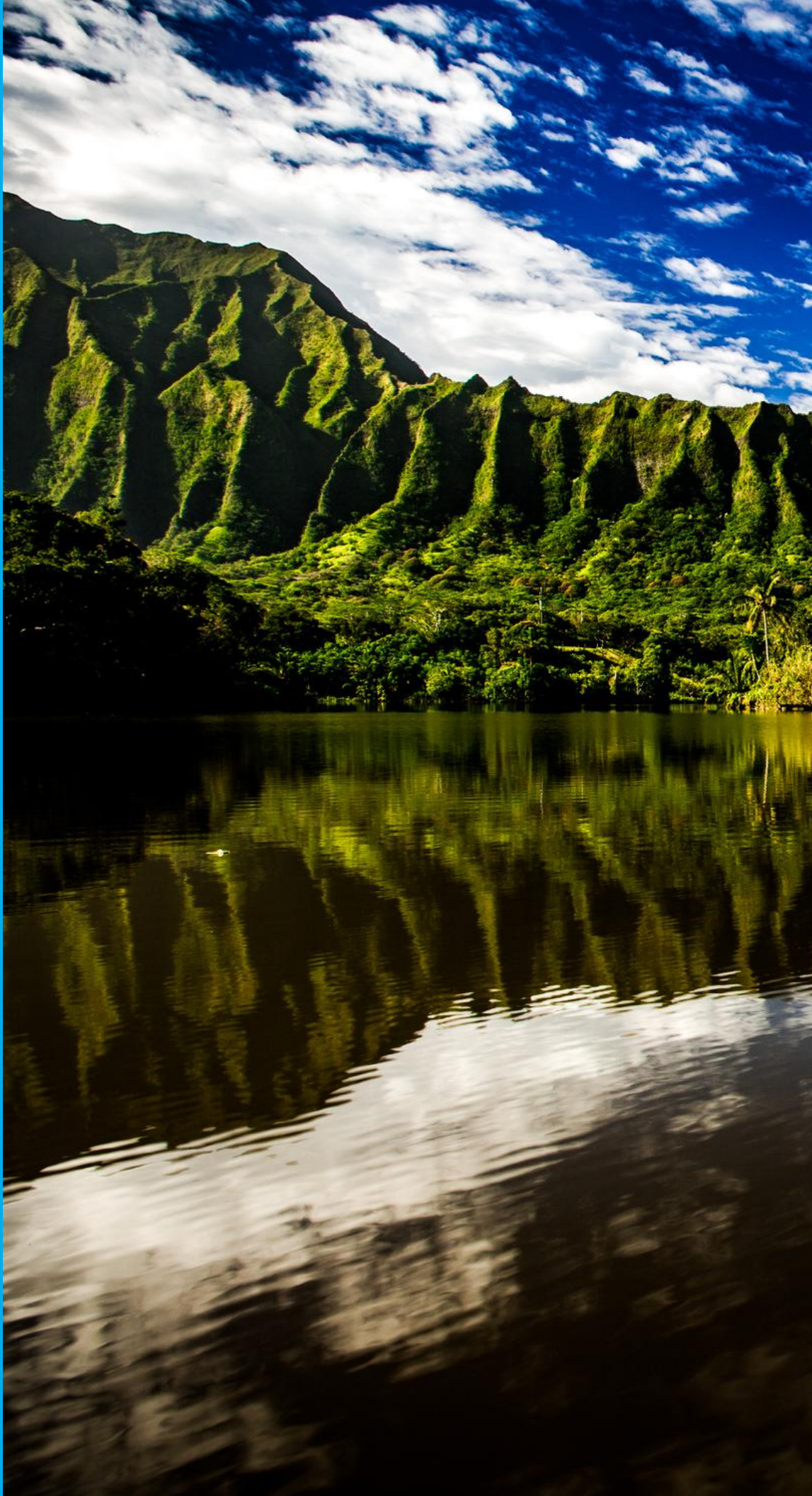
Reims



DES
WITHALOHA



KUALOIA RANCH



- Kualoa Ranch is a major highlight and memorable experience for large groups on Oahu. It is a highly requested off-site activity day for many different reasons...
- Large variety of outdoor activities including UTV tours, horseback riding, zip-lining, kayaking, ocean voyaging, movie studio tours, and more.
- They have a private island where your group can take a short boat ride over and enjoy the beach!
- Our partnership with Kualoa Ranch makes it easy for us to help you plan an amazing day.



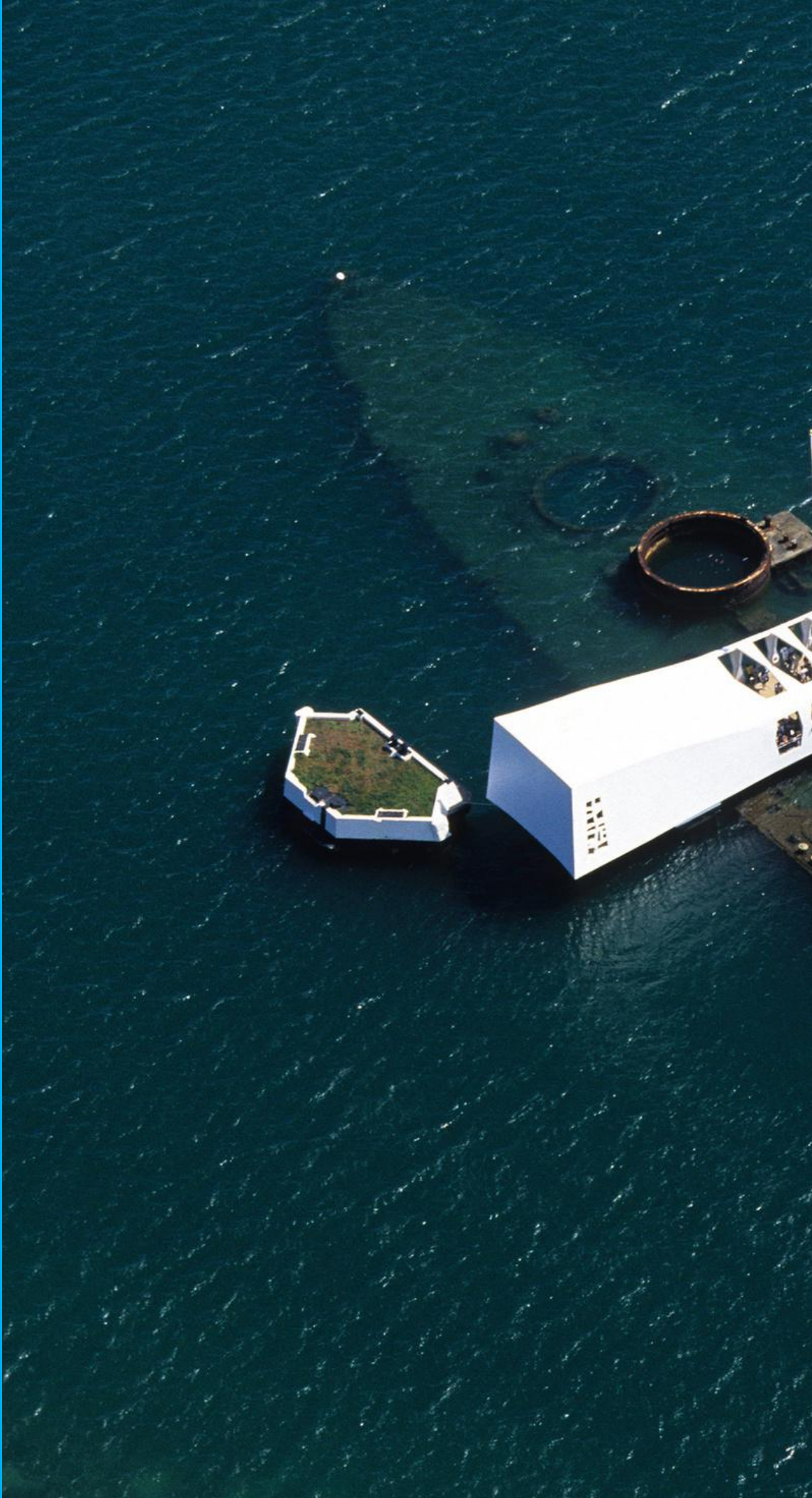


RECENT GROUP 750+

- **Boxed breakfast with coffee and water on the morning transportation from Waikiki**
- **(12) Staff members arrived to Kualoa early to secure activity tickets and be ready to guide attendees to their designated tours.**
- **UTV Movie Tour, Zip Line, & Horseback Riding**
- **Shuttle to Secret Island (complete buyout)**
- **Catered sandwiches, drinks, & chips were setup on the private island.**
- **Shave ice dessert station was also brought in**
- **Professional DJ playing music on the island**
- **Transportation back to Waikiki by 5pm**



PEARL HARBOR



- Pearl Harbor is the most visited site in all the Hawaiian islands with over 2 million visitors each year.
- The National Park Service runs the main Pearl Harbor Visitor's Center where you can catch a boat ride to the USS Arizona Memorial.
- Visitors also enjoy going to the Pacific Fleet Submarine Museum,
- USS Battleship Missouri,
- & Pearl Harbor Aviation Museum.
- Ford Island is a popular venue for large, private, dinner parties.







EVERY DECEMBER

- We organize every detail of the annual December 7th Pearl Harbor Memorial Parade
- Last year over 4500 band, choir, & cheer students from all over the US came to participate in the parade.
- Provided transportation and labor all week
- Arranged all activities for each school
- Arranged lunches each day
- Set up the awards ceremony location
- Lined up and cued the parade
- Set up the closing ceremony



LOOKBOOK

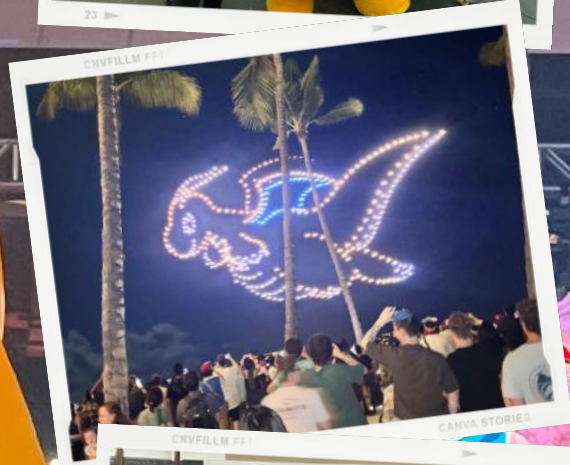






Pokémon

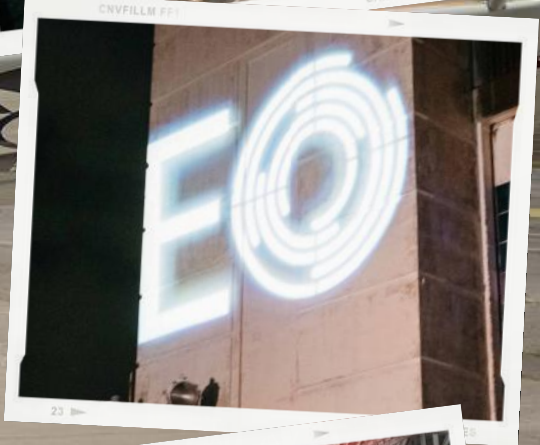




67



PLATE
SERIAL NO. PREFIX
00000







PRESIDENT
GEORGE H.W. BUSH
1941-1948
NAVAL AVIATOR

TBM AVENGER

The TBM Avenger was the largest and most powerful single-engine carrier-based attack aircraft of World War II. It was designed and built by the Douglas Aircraft Company, a division of the Douglas Aircraft Company, Inc. The Avenger was developed as a replacement for the TBF Avenger, which was found to be too expensive to produce in large numbers. The Avenger was designed to be a more economical and reliable aircraft, and it was produced in large numbers. It was used by the United States Navy and the United States Marine Corps during the war. The Avenger was a highly successful aircraft, and it played a major role in the Pacific theater. It was the most produced carrier-based attack aircraft of the war, with over 10,000 built. The Avenger was a true workhorse of the war, and it was a vital part of the Navy's attack force. It was a highly capable aircraft, and it was a true hero of the war. It was a highly successful aircraft, and it played a major role in the Pacific theater. It was the most produced carrier-based attack aircraft of the war, with over 10,000 built. The Avenger was a true workhorse of the war, and it was a vital part of the Navy's attack force. It was a highly capable aircraft, and it was a true hero of the war.

IGLOO

SILVER





GENKI ALA WAI PROJECT

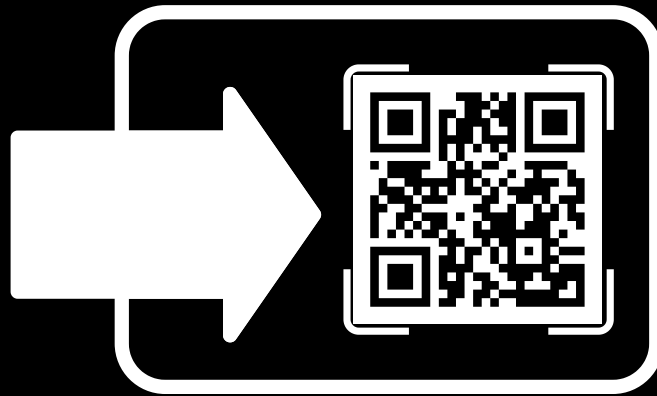


FUN FACT

Team Hawaii is a proud supporter of the Genki Ala Wai Project. It is the perfect CSR activity for groups of all sizes that come to Hawaii and want to make a difference.



SUBMIT AN RFP!



OAHUGENIUS.COM