

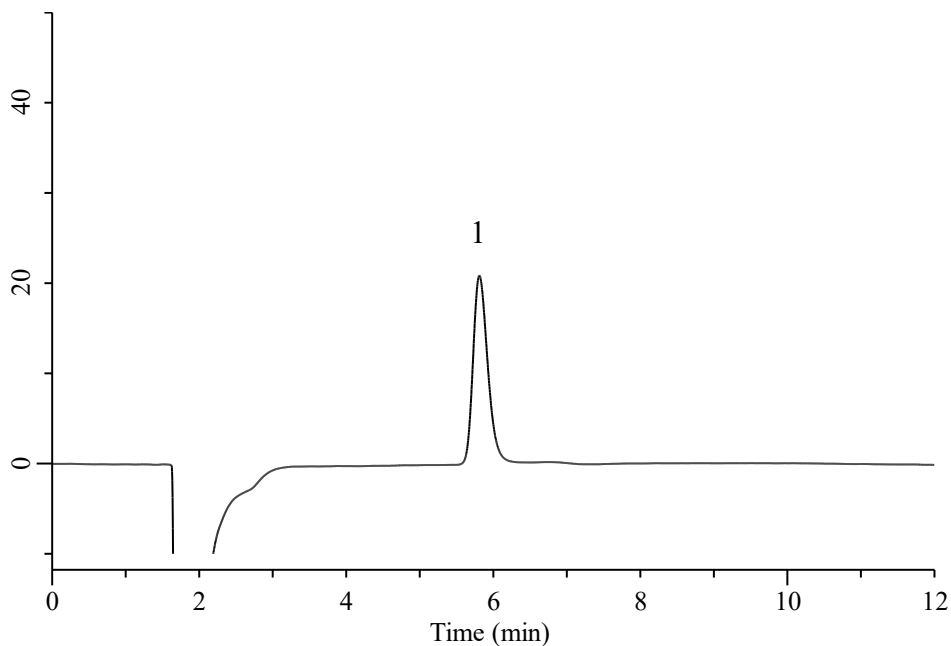
InertSearch for LC

Inertsil Applications

Analysis of Sucralose

(Under the Condition of food additive analysis method in food, Sucralose)

Data No. LB866-7111



Conditions

System : Chromaster HPLC system (HITACHI)

Column : InertSustain C18 (GL Sciences Inc.)
(5 μ m, 150 x 4.6 mm I.D.)

Column Cat. No. : 5020-07345

Eluent : A) CH₃OH
B) H₂O
A/B = 3/7, v/v

Flow Rate : 1.0 mL/min

Col. Temp. : 40 °C

Detection : RI

Injection Vol. : 20 μ L

Sample : Standard

Analyte:

1. Sucralose 1000 μ g/mL