



Notes From
Planet Cray

2024年
2月

February's "IMAGE":

「東」

east

I think this would have been a Lunar New Year's issue if I had gotten it done on time, but better late than never! I was in Japan for the start of the month (great season for strawberry sweets btw) and did some shopping for sleeves, among other stuff. Sadly, I had to return to the US before the Stand Up event... Thanks @atelierbarrel for doing some shopping for me!

Big thing of the month: Update of my Premium Maelstrom deck (tested)! It's been a lot of fun; I'll say this is my Year of the Dragon contribution... It's amazing what a single card can do for a deck (hint - it's not Repress Strike Dragon).

- Tempest
@dragon8blade

AIR SUPREMACY OF THE BLUE DRAGON

-by Tempest

Premium - Aqua Force
Blue Storm Dragon, Maelstrom
VG restand focused build

"The zine might be going through every other restanding VG dragon before it gets to overlord, eh?"

TLDR

G3 focused deck - strides for flexibility, go first, amass as many Maelstroms and Press Stream Dragons as you have CB for. Mythiarq Habitat to deck filter and fish for key units like Radiate Assault. Bonk opp twice with VG for like 8 drive checks, threaten lethal with crit checking, get lots of cards in hand to defend next turn.



Blue Storm Dragon, Maelstrom: Main vanguard, restand skill is deck focus. CB skill comes in clutch sometimes, esp. vs 13k VG decks.

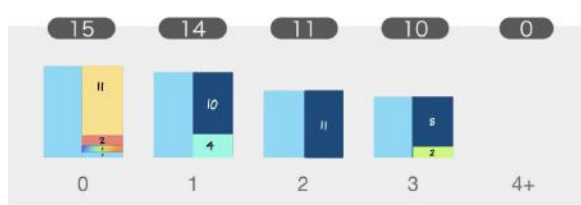
If more than 8 G3s are preferred, pick between Lordly and Reverse for the remainder.



Blue Storm Supreme Dragon, Glory Maelstrom: Backup VG, can also be a finisher in the right situation; (opp has 5 dmg + big hand)

- 4x Blue Storm Dragon, Maelstrom (V) ★
- 4x Blue Storm Supreme Dragon, Glory Maelstrom (V)
-
- 4x Drifting Flow Fencer ★
- 4x Press Stream Dragon ★
- 2x Blue Storm Soldier, Eldermoss
- 1x Repress Strike Dragon
-
- 4x Bubbleball Corporal ★
- 4x Radiate Assault ★
- 2x Calm Assault
-
- 3x Mythiarq Habitat ★
- 1x Spiritual Body Condensation
-
- 3x Blue Storm Marine General, Despina [C]
- 4x Bumper Shooter [C]
- 2x Kelpie Rider, Petros [C]
- 2x Kelpie Rider, Petros (V) [C][Sentinel]
- 2x Emerald Shield, Paschal (V) [D][Sentinel]
- 2x Escutcheo Bubble Dragon [H]
- 1x Source Dragon Deity of Blessings, Blessfavor [O]
- 1x Blow Bubble Dracokid
-
- 2x Blue Storm Breaking Dragon, Engulf Maelstrom ★
- 1x Blue Storm Helical Dragon, Disaster Maelstrom
- 1x Blue Storm Steel Dragon, Genbold Dragon ★
- 1x Progenitor Dragon of Deep Sea, Balanerena ★
- 1x Blue Furious Charge Dragon, Furiargus ★
- 1x Torrent of Determination, Valeos Revive
- 1x Marshal General of Surging Seas, Alexandros
- 1x Storm of Lament, Wailing Thavas
- 2x Marine General of Heavenly Silk, Lambros
- 1x Blue Wave Armor General, Galfilia
- 1x Blue Storm Deterrence Dragon, Ice Barrier Deagon
- 1x Guard Leader of Sky and Water, Ihoannes
- 1x Rebellious Heavenly Flow General, Dianera
- 1x Harmonics Messiah

★ - Key Cards



- | Normal Unit : 30
- | Trigger Unit : 16
- | Order : 4

- | G Unit : 16



Drifting Flow Fencer:
Free Maelstrom searcher,
Coral Assault numbers
+15000 is valuable in an
aqua force deck; decent
ride target



Press Stream Dragon:
This is what makes the
Maelstrom VG dangerous
+ generates value. Most
of your CB will be used
for this skill, multiple
copies in a turn if possible.
Can also be used on stride
turns; an extra drive
check is always nice.



Blue Storm Soldier, Eldermoss:
Back row attack can avoid
a number of 'front row'
targeted denial (i.e. Bermuda
Triangle) 10k body makes
him a good ride
target as well.



Repress Strike Dragon:
Generally good card, but here
mainly to offset low G1 count.
Restanding RG is also nice.



Bubbleball Corporal:
Another Maelstrom search
-between her and Analyze
shooter, I prefer her,
mostly for the 8k body.



Radiate Assault:
An important G1 for
enabling Maelstrom's
skill regardless of on
hit condition. Also
draws a card (bottom-
decking the Maelstroms
discarded by
Press Stream Dragon's skill).



Remaining 2-4 G1 slots are flexible, but I have a personal preference for Calm Assault. Viviana works well with Radiate Assault to draw more cards. Urjula is an excellent choice if you hate denial griffons.



Mythiarq Habitat:

This card's release was a HUGE game-changer for this deck. We went from 'issues with consistency across the board' to 'yeah, almost any field is fixable now'



Spiritual Body Condensation:
Remains a very useful toolbox,
especially later in the game.



Blue Storm Marine General, Despina:
Not much notable in the trigger lineup, aside from the option of running Despina, both as a complement to Glory Maelstrom's skill, and as a general tool to bar the use of G0 sentinels.

Stride Options / Opportunity

Generally, you stride in this deck only as a secondary option when a good G3 Maelstrom restand turn is either not possible or situationally inappropriate (not enough pieces, opp's hand indicates against, etc).

There isn't a single optimal stride; the number of different strides you have is the number of strategies.

Highlights of the Stride Deck:



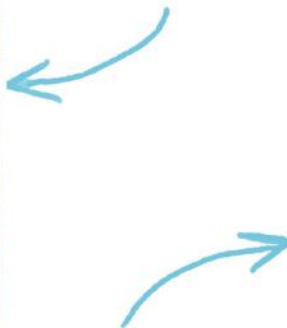
Genbold Dragon - For setup and hand+field advantage. "Defensive" stride sort of



Furiargus Dragon (Lambros and Alexandros as well) - almost all purpose decent offensive strides (except when honoly is present/active)



Engulf Maelstrom - good finisher if you have enough Maelstroms in soul AND can confirm your opp doesn't have elementaria ready



Balanerena - great finisher when you have a lot of G1/G0s in hand and/or your opp's hand is lacking in quantity.

Example G3 turn:

5 attacks, 8 drive checks

2 CB, 1 SB, 2 spare Maelstrom required



1CB



1CB



1SB



Attack Order:

1. Lowest accel/column
2. VG
3. Radiate Assault column ← must be 3/4
4. VG
5. Drifting Flow or Repress Strike x2 ← last

(additional attacks usually after 3-4, situationally)

The deck's strength is accumulating subtle advantage over time. Bubbleball Corporal and Drifting Flow Fencer get you Maelstroms for free, and the Press Stream Dragon's skill converts them at an exchange rate of 1 G3 to 2 drive checks, with Maelstrom's restand. Radiate Assault, who guarantees the restand skill, recycles a discarded Maelstrom and draws another card. Removing Maelstroms from deck while increasing also shifts trigger chance favorably.

蒼嵐竜



@dragon8blade



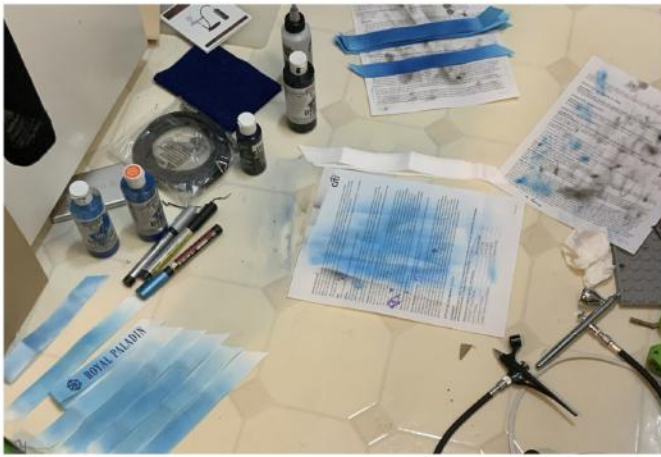
@dragon8blade

Clan Ribbon Tags:

A look at the process

While handing these out, some people asked me how/where I had these made. (The answer, one by one by hand, in my apartment.)

1. Design **GOLD PALADIN**



2. Cut + airbrush or dye ribbon

Notes:

- pay attention to color/texture contrast
- airbrush paint must dry flexible
- holographic heat transfer vinyl looks different on dark vs light colors
- choice of font should avoid super thin parts which will not cut well

3. Cut design



4. Weeding

5. Iron vinyl onto ribbon



6. Cut holes
set eyelet



7. Seal ends



8. Attach ring



Completed



THAT
STUPID
DREAM
AGAIN

...

THAT
GUY

...

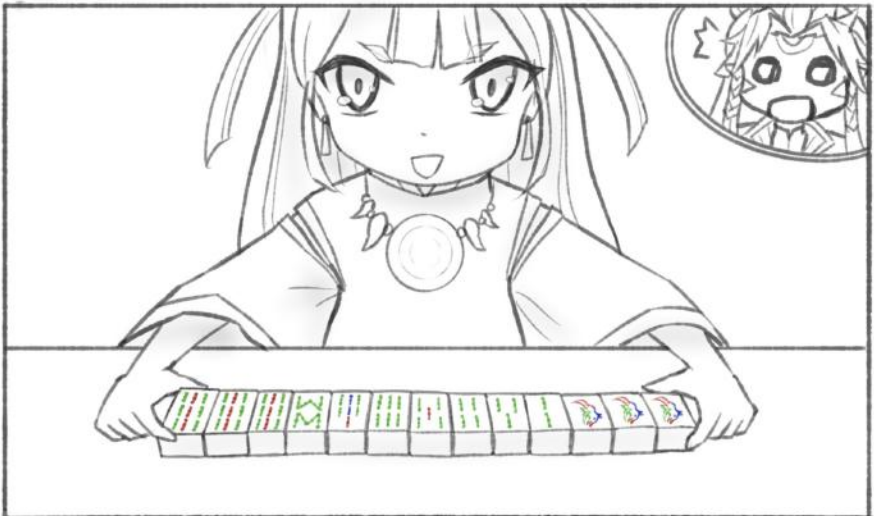
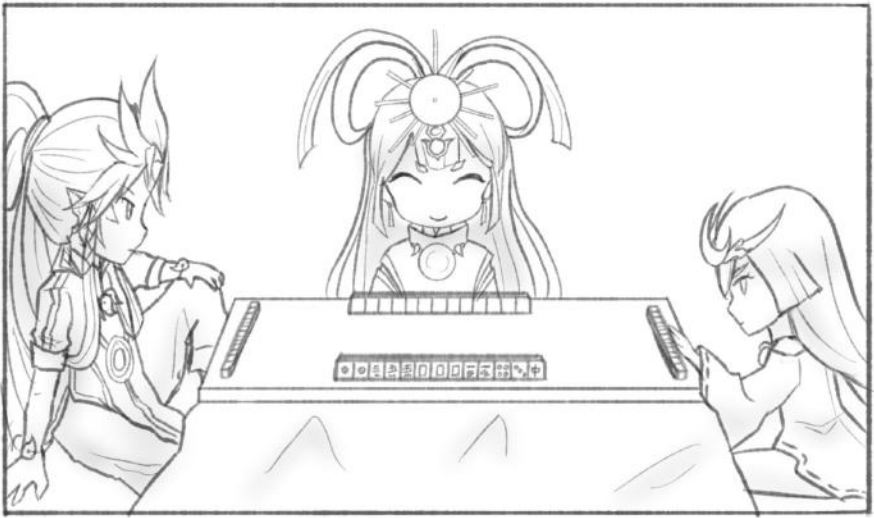


WHEN I
CLOSE
MY EYES

...

WHY IS
IT ALWAYS
-YOU-





Survey: Do any of your local stores sell these anymore?



Bushiroad's oversleeves used to be a pretty common sight, especially if you shopped online too. Lately it seems they've become rather scarce?

- Haven't seen em around
- Seen them around lately
- There might be a supply issue
- I know for a fact these have been discontinued

Q: Are you sure you're not imagining it?

A: Can't even find them online, except a few places with old, expensive stock. As of February 2024, I've checked 10 card shops in Tokyo, Japan and none had it.

Q: Why not switch to another brand?

A: Small hands. Bushiroad has some of the thinnest actual overlsieves on the market (I say 'some of' but I haven't actually found better). Overguard ZL is thin, but wider, and comes with the characteristic Z 'sharp enough to stab someone with' corners. Nice, but ouch.

Send me a message @dragon8blade (twitter) or by my website contact form if you have info!

