



MASERATI



Ghibli

Ghibli

CONTENTS

Extraordinary Disposition Ghibli—the absolute opposite of ordinary	4
A History of Character	10
Exteriors A new exterior paint color	14
Interiors New leathers and interior trims	22
Gran Duo Ghibli GranLusso and GranSport	30

Engines	48
Technology	54
The Sound of Quality Harman Kardon and Bowers & Wilkins Premium Audio systems	62
Safety	66
Ghibli Technical Specifications	78
The World of Maserati	80



F



EXTRAORDINARY DISPOSITION

Bold
STATEMENT, ELEGANTLY DELIVERED

Graceful and assertive, the Maserati Ghibli offers something very different in a world of gray, business-like conformity. As you would expect of a luxury sports sedan, Ghibli delivers inviting comfort and effortlessly intuitive technology, but also race-bred performance. There's graceful, four-door design, but also sporting character. And there's the smooth, luxurious ride, but also razor-sharp, coupe-like handling.

Such dynamic contrasts, for which Maserati is renowned, are a source of endless inspiration—whether you're on the way to a conference or breaking free for the drive of a lifetime.



The latest Ghibli models now offer even greater excitement, with a host of exterior design refinements, new safety technology and important developments in Advanced Driver Assistance Systems.

The Ghibli for 2019 is also offered in GranLusso or GranSport trim, each comprehensively equipped according to your personal preferences. With the GranLusso, an emphasis is placed on style and luxury appointments. GranSport, meanwhile, accentuates engaging driving dynamics. Both trims offer a new range of alloy wheels, exterior paint colors and interior options. Whichever you choose, whatever your ambition, the Maserati Ghibli always has a uniquely inspirational answer.







A HISTORY OF CHARACTER



An ENDURING LEGACY

The first Maserati Ghibli was designed by Giorgetto Giugiaro and unveiled at the Turin Motor Show of **1966**. Giugiaro, then in his 20s, was considered a design prodigy—and rightly so. His creation, with its 2+2 fastback format, pop-up headlights and audacious shark-nosed profile, was an instant hit and today is an automotive design icon. Maserati had planned to produce only 100 examples of this model, but following the car’s rapturous reception, increased that number to 400. In the end, Ghibli remained in production until the end of **1972**, with 1,295 examples built in coupe and spyder formats. The car followed a tradition pioneered by Maserati with the glorious A6 1500 of **1947**. As a grand tourer, it delivered on the promise of magnificent style, high-powered luxury and peerless comfort over almost any distance the owner wished to travel.

It was also, naturally, a car imbued with the motor-racing DNA of Maserati—a remarkably powerful force. Indeed, well before 1966, Maserati had proven credentials in competition with a host of famous wins. Here are just a few examples. In **1926**, Alfieri Maserati drove the Maserati Tipo 26 to victory in its first-ever race, the treacherous Targa Florio in the mountains of Sicily. In **1939**, Wilbur Shaw won the Indianapolis 500 at the wheel of the Maserati “Boyle Special” 8 CTF at an average speed of more than 115 mph. He then repeated this incredible feat the following year, making Maserati the only European manufacturer to win the Indy 500 two years in a row.

Our latest Ghibli embodies the spirit that shaped both the first incarnation of 1966 and our hunger to innovate, compete and win. Today, that spirit expresses itself through exclusive luxury, elegant yet bold design, progressive technology and, of course, empowering performance.





E



EXTERIORS

Singular STYLE

The design of the Ghibli is a study in dynamically sculpted curves and gracefully flowing lines. At the front, the signature grille that bears the Maserati Trident signals both dynamic intent and poised composure. Inspired by Maserati's legendary A6 GCS Berlinetta of the 1950s, the Ghibli features chrome bars that are perfectly integrated into the bumper.



In profile, a host of details create a striking, coupe-like appearance. They include frameless doors, muscular rear haunches and the sloping C-pillar design, which incorporates the timeless Saetta logo.

At the rear, you'll discover elegant bumper styling and quad chrome tailpipes.



Rosso Potente is an available color for an additional charge.

Gran Sport

Sophisticated NEW EXTERIOR SHADE

To enhance the eye-catching allure of the Ghibli, Maserati has added a striking new shade to the exterior paint options: Blue Nobile. The new color reflects a different side of the Maserati personality, yet captures the boldness and sophistication for which the Trident is renowned.



BLUE NOBILE TRI-COAT PAINT

The deep, dark blue of Blue Nobile sparkles with glass flakes that glisten when exposed to sunlight. Shimmering like the tips of waves in the rolling ocean, this is not so much a color as an enriching visual experience that transforms each time the car flashes by. Ever since the time of the ancient Egyptians, blue has been blessed with noble connotations, representing royalty and favored by rulers. This commanding shade of blue reflects these aristocratic traditions and perfectly complements the effortlessly flowing lines of the Ghibli.



INTERIORS



DISTINCTIVE INVITATION

The interior of the Ghibli is, in essence, a clearly expressed invitation to travel—in luxurious comfort and with effortless command of the high power at your disposal. In true Maserati grand touring tradition, the cabin is characterized by elegant Italian style, handcrafted finishes and perfectly organized, generously proportioned design. The leather-finished curves, the technical purity of the dashboard, and detailing in metallic-effect Dark Mirror trim simultaneously relax and heighten the senses. Two side panels converge toward an elegantly simple central structure that houses the traditional Maserati clock, with its blue face and aluminum detailing. Below rests the 8.4-inch touchscreen infotainment system with rotary control, in addition to a convenient storage compartment for a mobile phone and accessories. In front of the driver, the large speedometer and rev counter are separated by a 7-inch TFT display that presents essential dynamic vehicle data.

Even with its head-turning, coupe-like proportions, the Ghibli offers ample front legroom, as well as comfortable head and leg space for rear passengers. All seats are covered in carefully selected, meticulously finished leather. In the finest tradition of Italian craftsmanship, they are stitched by hand, while the front headrests are embroidered or embossed with the Trident logo. New options include the availability of immaculately soft Pieno Fiore natural leather, as well as other updated interior trims.

Individual adaptability is a Maserati hallmark. That is why, for instance, the front seats of the Ghibli offer 12-way power adjustment and the leather multifunction steering wheel features nearly infinite adjustment fore and aft, up and down. In the rear, 60/40 folding leather seats can comfortably accommodate three passengers. These provide fully optimized lateral support and comfort even on the longest journeys. If child seats are required, ISOFIX fittings allow them to be anchored securely.



GranLusso



MASERATI
TOUCH CONTROL PLUS

GranTurismo

MAX A/C AUTO AUTO 300

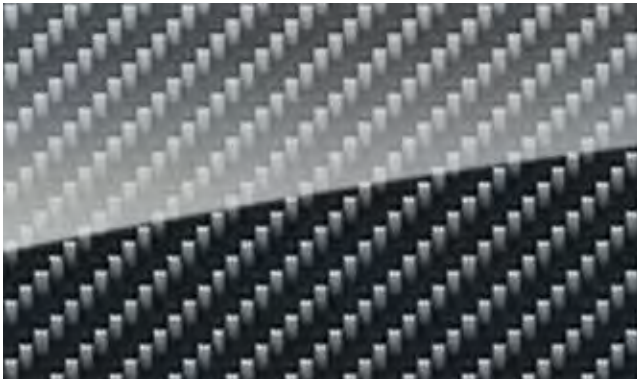
DRIVING MODES
SPORT
SPORT+
ROAD
WET
OFFROAD
OFFROAD+
OFFROAD+2
OFFROAD+3
OFFROAD+4
OFFROAD+5
OFFROAD+6
OFFROAD+7
OFFROAD+8
OFFROAD+9
OFFROAD+10
OFFROAD+11
OFFROAD+12
OFFROAD+13
OFFROAD+14
OFFROAD+15
OFFROAD+16
OFFROAD+17
OFFROAD+18
OFFROAD+19
OFFROAD+20

New INTERIOR TRIMS

The purposeful ambience of the cabin is another aspect that sets Maserati apart. Two lavish new interior trims add to the appeal of this sanctuary for the driver and further increase the options for personalization.

HIGH-GLOSS CARBON FIBER TWILL

Developed to emphasize the sporty nature of Maserati, this new trim has a glossy top coat that presents a textured, three-dimensional look and adds further exclusivity to the cabin. Every car is completely unique as the carbon pattern is real, ensuring that it will be slightly different every single time. The other beauty of carbon is its extraordinary natural strength, which prevents the trim from marking and protects the integrity of the Ghibli interior.



HIGH-GLOSS ROVERE VENEER

As with all other new Maserati trims, this complex veneer took around a year to develop from original concept to finished product. It is a combination of three different woods layered and then crafted by artisans in Italy. The tree bearing the Rovere wood is the symbol of one of the most powerful Italian families, and it is the fine stripes and glossy top coat that give this trim its highly distinctive appearance.



Pieno Fiore NATURAL LEATHER, BEYOND COMPARE

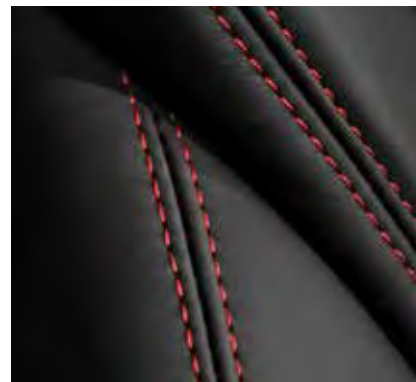
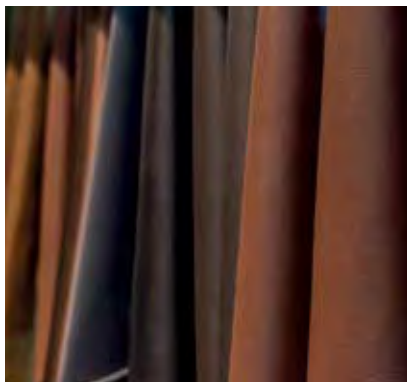
All leather is not created equal. Pieno Fiore natural leather offers an extraordinary softness to the touch and is unrivaled in quality and durability.

An option for Ghibli GranLusso and GranSport, Pieno Fiore leather—sourced exclusively for Maserati—is highly desirable for its subtle texture, aroma and ability to take on a beautiful patina over time.

This natural leather comes from the hide of bulls reared in the mountains of Northern Europe, at an altitude where there are few insects and no fences with spikes to blemish the perfect

hides. Available in black, red or tan—with a distinctive stitching pattern on the seats and door panels—Pieno Fiore is colored by a special process inside iroko hardwood barrels to bring out the most natural nuances in the finished product.

The raw material is crafted for six long weeks before the leather is ready to be delivered to our production plant. It is this painstaking attention to detail that sets our leather—and our cars—apart.







GRAN DUO

Ghibli Gran Lusso
FOR THE LOVE OF LUXURY



The GranLusso trim builds on the exclusive appeal of the Ghibli, with horizontal chrome accents on the lower grille, body-color side skirts, the GranLusso badge on each front fender, 19-inch silver Poseidone alloy wheels and gloss-black painted brake calipers featuring white Maserati script. The standard hands-free power trunk lid with kick sensor allows you to open the trunk by simply moving your foot under the rear bumper. Meanwhile, soft-close doors—standard for Ghibli S and Ghibli S Q4 GranLusso—provide quiet confidence.





Opulence **WITH AN EDGE**

The Ghibli GranLusso interior encompasses unmatched levels of luxury and convenience, with a choice of Ermenegildo Zegna silk upholstery or full premium perforated leather, both complemented by open-pore Radica wood trim. Front occupants enjoy comfortable ventilated seating with 12-way power adjustment and a memory function. The heated, power-adjustable steering wheel is also finished in leather and fine wood. Other exclusive luxuries include the 900-watt, 10-speaker Harman Kardon Premium Audio System, rear laminated glass and an electrically lockable, PIN-protected passenger glove box.









GranLusso

Ghibli GranSport

SPORT TAKES CENTER STAGE

For an even sharper sporting edge, there's the Ghibli GranSport. It comes equipped with a sport front fascia with Piano Black accents, GranSport badges on the front fenders, and 20-inch machine-polished silver Urano wheels with red painted brake calipers featuring white Maserati script. Ghibli GranSport models also feature blue inserts within the grille-mounted Trident, recalling the original badge designed by Mario Maserati in the 1920s. The same evocative color highlights the wheel center caps and the Saetta logo on each C-pillar.



An optional Full Carbon Fiber Kit for the GranSport is another tempting personalization. This includes carbon fiber door handles, exterior door mirrors, B- and C-pillar covers, front splitter and rear spoiler. Both the GranLusso and GranSport trim offer the high-tech style and safety of the new Adaptive Full LED Matrix headlamps.





Take THE RACING LINE

Enhancing the atmosphere of its dynamic interior environment, the GranSport features body-hugging sport seats with 12-way power adjustment and a memory function, a grippy sport steering wheel, aluminum column-mounted paddle shifters and Inox sport pedals. Also available in the GranSport is an Interior Carbon Fiber Kit, which adds lightweight, tactile carbon fiber to the sport steering wheel, gearshift paddles, door sills and interior trim.









GranSport



E

ENGINES





CHOICES, ENDLESS POSSIBILITIES

At the heart of every Maserati is an engine that offers the ability to cover long distances at dynamic speed, with ultimate refinement. In the Ghibli, the power that delivers this excitement comes from a choice of two engines.

Nothing can match the exhilarating engine note of a Maserati, and the Ghibli delivers with high-capacity power. Designed by Maserati Powertrain and built at Ferrari's Maranello plant exclusively for Maserati, each inspired 3.0-liter, twin-turbocharged V6 is engineered to perform—and sound—like no other engine in the world. A lightweight exhaust system with bypass valves ensures that the Ghibli's voice is delivered to maximum effect. With Sport mode active—which also sharpens the vehicle's handling parameters—the valves open, providing the shortest, highest-energy route for the exhaust gases. The result is optimized performance and that unmistakably resonant, spine-tingling sound.

345 HP TWIN-TURBO V6

The V6 engine in the Ghibli delivers 345 hp at 5,500 rpm and a peak torque of 369 lb-ft between 4,500 and 5,000 rpm. In overboost mode, peak torque is available between 1,750 and 4,500 rpm. The sprint from 0 to 62 mph is dispatched in just 5.5 seconds, and the top speed is an impressive 166 mph.*

424 HP TWIN-TURBO V6

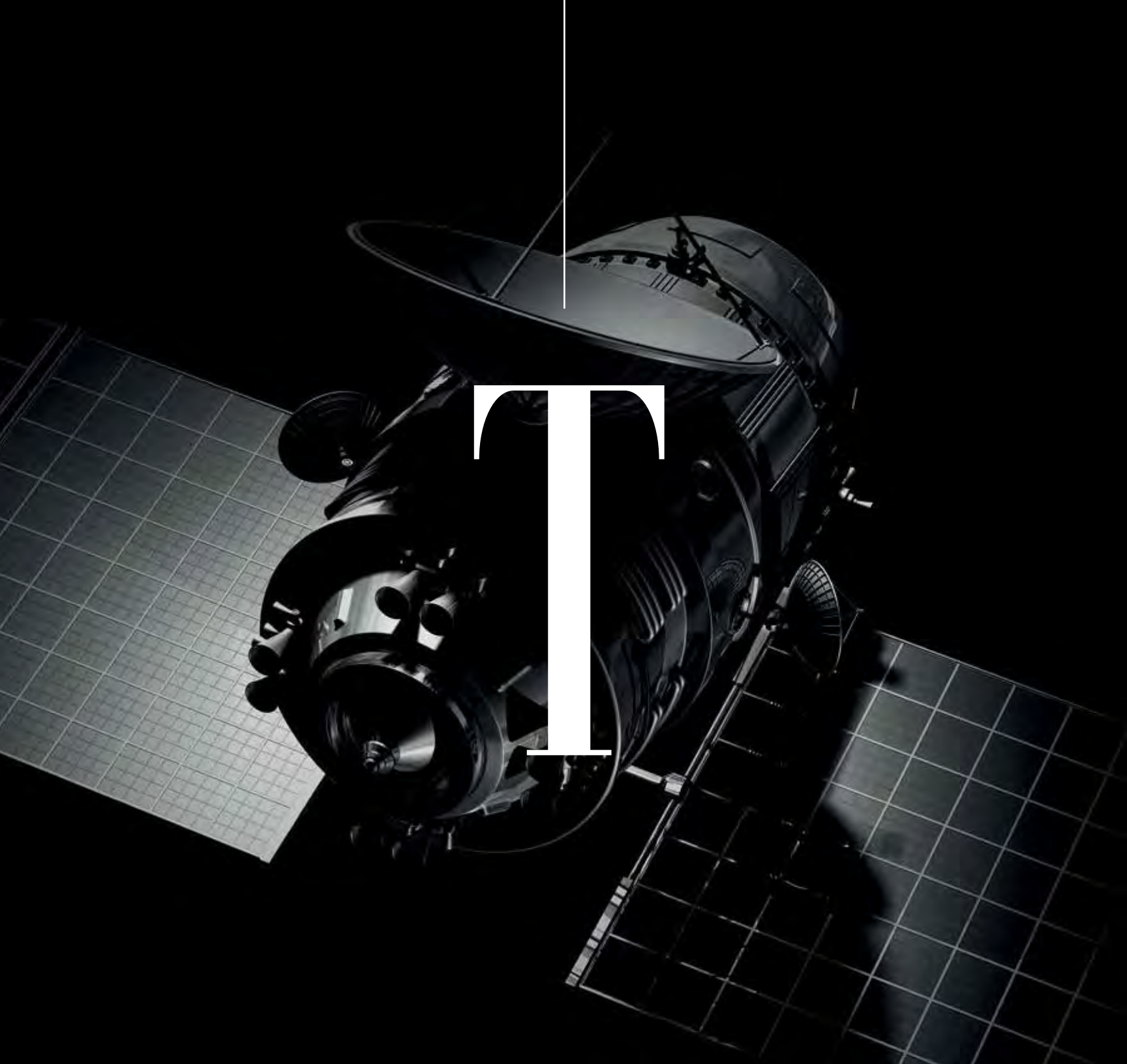
The Ghibli S and Ghibli S Q4 are equipped with the most powerful version of the Maserati V6 engine. Maximum output has been raised to 424 hp and is delivered at 5,750 rpm. With overboost active in Sport mode, peak torque of 428 lb-ft is on tap between 2,250 and 4,000 rpm, and 90 percent of that torque is accessible at just 1,600 rpm. That means remarkable driving flexibility and performance. The sprint from 0 to 62 mph is accomplished in 4.9 and 4.7 seconds respectively, and both versions achieve a top speed of 178 mph.*

*Maserati SpA test results. Actual acceleration results may vary, depending upon specification of vehicle, road and environmental conditions, testing procedures and driving style.





GranLusso



TECHNOLOGY



GranLusso

Sophistication **AND EXHILARATION**

The sophisticated ZF automatic transmission in the Maserati Ghibli puts a vast world of possibilities in the palm of your hand—and, if tempted, your fingertips.

The advanced design of the ZF eight-speed automatic transmission ensures precise gear changes and optimum performance, putting the power of the Ghibli engine under your complete control. Thanks to auto-adaptive software, the transmission modifies its shift patterns according to driving style, for an even more rewarding, one-to-one driving experience. When it comes to long, high-speed journeys, the last two gears, seventh and eighth, are specially calibrated to reduce fuel consumption and further increase comfort. The transmission sends power to the rear wheels of all Ghibli versions via a standard mechanical limited-slip differential. This ensures superb traction in even challenging situations. For maximum driver involvement, there are five operating modes, selected using the buttons near the gear lever: Auto Normal, Auto Sport, Manual Normal, Manual Sport, and Increased Control & Efficiency (I.C.E.). Upshifts are all automatic unless a manual mode is selected.

AUTO NORMAL MODE

This default mode provides smooth gearshifts at low revs to maximize ride comfort and minimize fuel consumption. When a sportier style of driving is recognized by the system, upshifts automatically occur at higher engine speeds.

AUTO SPORT MODE

In this mode, gearshifts take place in less than 100 milliseconds and occur at higher revs to deliver a near-seamless flow of

exhilarating high power and a sportier driving experience. Auto Sport mode also initiates overboost to access peak torque at far lower engine speed. Integrated Vehicle Control (IVC) adds to the excitement, giving the driver even more dynamic control.

MANUAL NORMAL MODE

This mode allows drivers to change gears using the lever on the center console or via the optional column-mounted paddle shifters. Upshifts occur automatically when approaching the rev limiter, and downshifts occur based on the recognized driving style.

MANUAL SPORT MODE

With Manual Sport mode, the driver is in full command of the transmission. A host of other factors also come into play to make the driving experience even more exhilarating. The overboost function activates for maximum performance; the ESP is less intrusive; the exhaust valves open up for an even more aggressive tone; and gear changes are quicker and sharper. Additionally, throttle mapping is more aggressive, and the engine can be pushed to the redline without the system intervening. The only automatic feature is downshifting if engine revs drop too low.

I.C.E. (INCREASED CONTROL & EFFICIENCY) MODE

This mode ensures better control in all weather conditions, the most comfortable and quietest engine response, and maximum fuel efficiency.



Masterful DYNAMICS

Thanks to a host of intelligent systems, the long road ahead—with its twists, turns and occasional surprises—is there for the taking in the Maserati Ghibli.

Q4 INTELLIGENT ALL-WHEEL-DRIVE SYSTEM

The Ghibli S Q4 is a perfect choice for drivers seeking the dynamic rewards of rear-wheel drive with the advantages of Maserati Q4 intelligent all-wheel-drive traction. In normal conditions, the Q4 system sends all of the torque to the rear wheels, delivering exciting Maserati driving dynamics and optimal fuel consumption. If traction is lost during fast cornering, sudden acceleration or limited rear-axle grip, Q4 can alter the torque split from 100 percent rear-wheel drive to 50:50 between the front and rear wheels. In an imperceptible 150 milliseconds—less than the blink of an eye—the Q4 system can intelligently apply power to maximize grip.

SKYHOOK PERFORMANCE SUSPENSION WITH ELECTRONIC DAMPING CONTROL

The Ghibli GranSport features Skyhook Performance Suspension as standard, with shock absorbers delivering continuous damping variation. The system uses sensors that monitor the movement of each wheel and the car's body to determine present road conditions and driving behavior. The system then instantly adjusts individual damper settings accordingly. Ride comfort is prioritized as standard, but simply pressing the Skyhook Sport Setting button on the Drive Mode control immediately firms up the shock absorbers for more dynamic handling.

ELECTRIC POWER STEERING (EPS)

Every Ghibli features EPS as standard, delivering handling response and road feel that is such an important part of our Maserati DNA. With EPS, effort required for steering is adapted according to speed. When maneuvering in a tight spot, steering is lighter and easier to turn, but it has a weightier, more connected feel at high speeds. The system is particularly efficient, being powered directly by the engine and, without the need for a hydraulic pump and pressurized fluid, requires less maintenance.

INTEGRATED VEHICLE CONTROL (IVC)

Driving dynamics are enhanced by IVC, which proactively addresses situations that could result in vehicle instability.* The system instantly anticipates and counteracts situations that could cause instability. The system works by selectively reducing engine torque and applying brake force to individual wheels as required. Out on the open road or through sweeping twists and turns, the result is increased control, greater driving enjoyment and potentially higher speeds.

*Always drive carefully, consistent with conditions. Always wear your seat belt and obey traffic laws.



Rosso Potente is an available color for an additional charge.

GranSport

Innovation FOR A CONNECTED WORLD

A cutting-edge infotainment package for the 2019 Ghibli puts the focus on intuitive engagement, real-world assistance and adaptable enjoyment.

The interior of the Ghibli is built around a driver interface that is intuitive, uncluttered and simple to use. The instrument cluster features large analog gauges for the tachometer and speedometer, alongside a 7-inch TFT display. Major dynamic functions are incorporated into the buttons alongside the gearshift, while other on-board settings can be adjusted using the Maserati Touch Control Plus (MTC+) infotainment system at the center of the dashboard, or via the steering wheel controls for the 7-inch TFT display.

MASERATI TOUCH CONTROL PLUS (MTC+)

The 8.4-inch MTC+ unit takes pride of place at the center of the Ghibli dashboard. Using it is intuitive and easy, thanks to a minimalist layout and a highly responsive interface designed to help the driver maintain focus on the road ahead.

The MTC+ can be operated in three ways: via the multi-touchscreen interface, the rotary control in the central console, or through voice commands. The system incorporates the car's radio, Bluetooth®, and satellite navigation system along with connections to external sources such as mobile phones, tablets and laptop computers.

Using the aux-in port, USB ports or SD card reader, passengers can play music or, when the car is stationary, view images on the screen. In addition, MTC+ controls the front-seat heating, as well as the ventilation, steering-wheel heating and the rear sunblind (where fitted). When the Ghibli is backing up, the rear-view camera and grid lines are shown on the center screen display.

The state-of-the-art MTC+ system also supports Apple CarPlay® and Android Auto™ mirroring functions. In addition, iPhone® users also benefit from Apple's Siri® personal assistant, allowing them to carry out tasks like placing phone calls, accessing music or messages, reading emails or viewing websites—all via voice commands.

Apple CarPlay®: Requires compatible iPhone®. See dealer for phone compatibility. Data plan rates apply. Vehicle user interface is a product of Apple®. Apple CarPlay is a trademark of Apple Inc. iPhone is a trademark of Apple Inc., registered in the US and other countries. Apple terms of use and other privacy statements apply. Android Auto™: Requires compatible smartphone running Android™ 5.0 Lollipop or higher and download app on Google Play. Android, Android Auto and Google Play are trademarks of Google LLC.



Maserati



A large, white, serif capital letter 'S' is the central focus of the image. It is set against a dark, monochromatic background of musical notation, including staves and notes, which are slightly blurred and dimly lit. A thin white vertical line extends from the top edge of the frame down to the top of the letter 'S'.

S

THE SOUND OF QUALITY

Bowers & Wilkins



World-Class AUDIO ENTERTAINMENT

The Ghibli is offered with a choice of three audio systems. A powerful 280-watt, eight-speaker package is fitted as standard and sets the bar at an impressively high level. True audio aficionados can upgrade to one of two outstanding options: the 10-speaker Harman Kardon Premium Audio System (standard on the GranLusso and GranSport) or the 15-speaker Bowers & Wilkins Ultra Premium Audio System.

HARMAN KARDON PREMIUM AUDIO

The optional Harman Kardon Premium Audio System offers an elevated level of audio refinement, with every facet tailored to complement the Ghibli's stunning interior. To achieve this, Harman Kardon sound engineers worked very closely with the development team at Maserati. At the core of the system is a state-of-the-art, 900-watt amplifier, delivering rich and detailed sound quality via the radio, MP3 player, iPhone® or audio streaming device. A total of 12 independent channels are deployed for superb balance within the cabin. A high-performance subwoofer handles the low-end frequencies with ease, while the mid-range drivers and tweeters ensure that every instrument and every artist can be appreciated to the fullest. Ten high-powered speakers are carefully distributed throughout the interior to guarantee sublime sound for all on board.


BOWERS & WILKINS ULTRA PREMIUM AUDIO

Bowers & Wilkins applies its 50-year history of extensive research and development in the field of psychoacoustics—the science of how people react emotionally to sound—to this magnificent audio system. Fifteen high-end speakers, with mid-range drivers and rear woofers made from Kevlar®, have been strategically built into the car's architecture, while a 1,280-watt amplifier ensures immersive sound. Advanced aluminum tweeters capture the faintest audio subtleties, while Rohacell® drivers assure deep, resounding bass. The system features QuantumLogic™ Surround Sound Technology, which digitally remodels signal streams and reconstructs the original recording of a musical piece. In addition, the Clari-Fi function automatically restores detail lost in digitally compressed music. The Ghibli's Bowers & Wilkins system is compatible with most disc formats and features a built-in USB port for a smartphone or MP3 player. Alternatively, tracks can be streamed directly via either Bluetooth®, Apple CarPlay® or Android Auto™.





SAFETY

68° 

91° out. E

4:50  FM 90.5

 68

Controls

 Lane Keeping Assist	VISUAL & HAPTIC	 Auto High Beam Assist	
 Active Blind Spot Assist	VISUAL & ACOUSTIC	 Privacy Lock	
 Forward Collision Warning	ACTIVE BRAKE: ON	 Screen Off	
 Traffic Sign Assist	BLINKING: OFF		

 Radio	 Media	 Controls		 Climate	 Nav	 Phone
-------------------------------------------------------------------------------------------	-------------------------------------------------------------------------------------------	----------------------------------------------------------------------------------------------	--------------------------------------------------------------------------------------	-----------------------------------------------------------------------------------------------	-------------------------------------------------------------------------------------------	--------------------------------------------------------------------------------------------

AUTO

Advanced DRIVER ASSISTANCE SYSTEMS

The Ghibli is equipped with a comprehensive range of Advanced Driver Assistance Systems. These innovative safety features offer greater peace of mind, whether you're on a continent-crossing grand tour or dashing across town.

HIGHWAY ASSIST SYSTEM (HAS)

Combining the virtues of Adaptive Cruise Control with Stop & Go and Lane Keeping Assist, Highway Assist System (HAS) makes life easier while driving on highways, achieving Level 2 semi-autonomous driving.¹ Using information picked up from a digital camera behind the rear-view mirror and a radar system in the front grille, HAS automatically keeps the vehicle centered in its lane, at a preselected speed and at a chosen distance from the vehicle ahead, and will decelerate the Ghibli as traffic conditions dictate. To help ensure safety, HAS requires the driver to keep his or her hands on the steering wheel at all times.

TRAFFIC SIGN RECOGNITION

While monitoring two types of signage—speed limits and temporary speed limits due to conditions such as heavy rain—the Traffic Sign Recognition system displays updated signs digitally in the gauge cluster.² The system works with a digital camera mounted behind the rear-view mirror in conjunction with navigation system data.

LANE DEPARTURE WARNING

Using a camera in the rear-view mirror to monitor road markings ahead, this system helps drivers keep the vehicle in the chosen lane on highways and main roads.¹ This system helps reduce

lane drift and the possibility of lateral collisions by warning when the vehicle crosses lane markings without the turn signal activated. Activation of the turn indicator overrides the system.

LANE KEEPING ASSIST (LKA)

This system provides valuable support if the driver is about to unintentionally leave a lane.¹ A digital camera behind the rear-view mirror monitors road markings to communicate the status of the course ahead. The instrument panel display shows the specific status: White lines on either side of the vehicle image indicate that it is safely in the lane. One yellow line indicates that the Ghibli is moving off-center, right or left. One flashing yellow line warns of lane departure. If the Ghibli appears to be moving out of the lane unintentionally, LKA actively steps in with corrective steering torque.

ACTIVE BLIND SPOT ASSIST

With this system, a warning icon appears in the door mirrors when a vehicle enters the driver's blind spot.³ Three levels of support can be selected if the driver nonetheless initiates a lane change: The system will maintain a visual alert in the door mirrors; the alert is supported by an acoustic warning; or the system intervenes with steering assistance. The intensity of this assistance is also adaptable according to preference.

¹ This system is a driver's convenience system, not a substitute for active driver involvement. The driver must remain aware of traffic conditions and maintain control of the vehicle. ² Traffic Sign Recognition System is not a substitute for safe and attentive driving. Factors including weather and condition of the traffic sign can impact recognition and display of the sign. Always check traffic signs visually while driving. ³ Always check visually for vehicles prior to changing lanes.

360° SURROUND VIEW CAMERA

This system provides a clear 360-degree view around the vehicle to assist with parking and highlighting otherwise hidden obstructions.¹ Cameras beneath the door mirrors, plus front and rear cameras, capture images shown on the center display screen.

ADAPTIVE CRUISE CONTROL WITH STOP & GO

Adaptive Cruise Control constantly monitors the vehicle ahead, maintaining a pre-set distance.² With the Stop & Go function, the vehicle will also adjust to the speed of the vehicle in front until it comes to a complete stop, provided the stop takes less than two seconds.

FORWARD COLLISION WARNING PLUS

This system, in combination with Adaptive Cruise Control, monitors vehicles ahead and warns if the approach could result in a rear-end collision.³ This is linked to the Advanced Brake Assist System, which provides additional braking during an emergency stop. If the warning does not prompt any action from the driver, the Autonomous Emergency Braking System automatically applies the brakes to reduce vehicle speed.

REAR CROSS PATH FUNCTION

This system emits a warning when an unseen vehicle is approaching, from the right or left, while the driver is reversing out of a parking space.⁴

FRONT AND REAR PARKING SENSORS AND REAR-VIEW CAMERA

To assist with maneuvering in tight spaces, the Ghibli comes equipped with parking sensors in the front and rear bumpers.⁵ Beeping noises increase in frequency as the obstacle approaches. Additionally, the TFT display at the center of the instrument panel shows the car surrounded by symbols in green, yellow or red, depending on the remaining distance. In addition, the rear-view camera shows what is behind the car on the infotainment screen. Dynamic grid lines illustrate the maximum width of the vehicle and its projected path, based on the steering angle of the front wheels.

¹ Always check entire surroundings visually before moving forward or backing up. ² This system is a driver's convenience system, not a substitute for active driver involvement. The driver must remain aware of traffic conditions and be prepared to use the brakes to avoid collisions. ³ This system is an alert system for the front of the vehicle. It is not a substitute for active driver involvement. The driver must remain aware of traffic conditions and be prepared to use brakes to avoid collisions. ⁴ Always check entire surroundings visually before backing up. ⁵ Always check entire surroundings visually before moving forward or backing up.



GranSport



Gran Lusso



Pirelli

Comprehensive SAFETY

Maserati engineers have made safety a top priority when designing the Ghibli, which combines mile after mile of high-powered driving excitement with the benefit of a variety of driver-assistance and safety systems.

MASERATI STABILITY PROGRAM (MSP)

Developed under extreme testing conditions, the Maserati Stability Program (MSP) employs an array of sensors to constantly monitor driving conditions, while utilizing a host of safety and performance systems to maintain handling and grip.* If, for instance, a skid is detected, MSP selectively reduces engine torque and can activate the brakes with finely varied inputs to help restore stability within milliseconds.

The MSP system also works in conjunction with features like Anti-Slip Regulation (ASR), which reduces wheel spin and improves traction, and engine brake torque control (MSR), which prevents the wheels from locking during sudden downshifts. Additionally, the Anti-Lock Braking System (ABS)

reduces wheel lockup and Electronic Brakeforce Distribution (EBD) distributes brake force evenly between the front and rear axles. Further support is provided by the Brake Assistance System (BAS), which responds to emergency stops by boosting pressure in the hydraulic circuit to maximize stopping power. The Hill Hold function keeps the vehicle from rolling backward when the driver sets off on an uphill slope.

TIRE PRESSURE MONITORING SYSTEM (TPMS)

This standard system continuously monitors tire pressure using a sensor integrated with the tire valve, which can be read on the dashboard display. In the case of a puncture or a change in tire pressure, the system notifies the driver with visual and acoustic warnings.

*Always drive carefully, consistent with conditions. Always wear your seat belt and obey traffic laws.



ADAPTIVE FULL LED MATRIX HEADLAMPS WITH AUTOMATIC HIGH BEAM ASSIST

The GranLusso and GranSport are fitted with Adaptive Full LED Matrix headlamps that further sharpen the Ghibli's striking appearance, significantly improve visibility and lower energy usage. They also offer remarkably long bulb life. Compared with bi-xenon lighting, visibility is improved by 20 percent with 15 LEDs operating at full beam. Road illumination extends by 180 feet, with roughly double the bulb longevity.

Automatic High Beam Assist provides increased forward lighting at night by automating high beam control through the use of a forward-facing digital camera located behind the rear-view mirror. This camera detects environmental luminosity, the headlamps of oncoming vehicles and the tail lamps of proceeding vehicles in the front area. In these cases, the system automatically switches from high beams to low beams until the approaching vehicle is out of view.

ADAPTIVE DRIVING BEAM (ADB)

This system automatically adjusts the width and depth of the headlight beams, giving maximum lighting effectiveness and optimal safety. This is made possible by a camera mounted in the rear-view mirror and sensors that monitor several different parameters, including the steering wheel position, the car's speed and driving behavior. ADB comes on automatically when driving in bad weather, on highways or in town.

SEVEN AIRBAGS

The Ghibli is equipped with seven airbags. Two front airbags, both dual-stage, offer added protection for the driver and front passenger in the event of collision, while further protection is provided by side and window airbags, as well as one airbag to help protect the driver's legs.*

*Always sit properly in designated seating positions with seat belts securely fastened at all times.

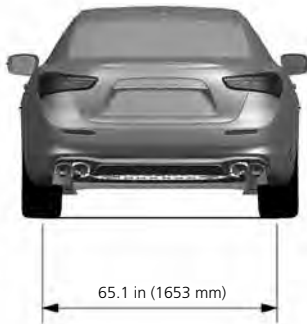
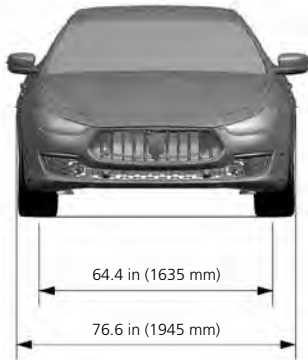




GranLusso

Ghibli

TECHNICAL SPECIFICATIONS



DIMENSIONS AND WEIGHTS

Length
Width (with side mirrors)
Width (without side mirrors)
Height
Wheelbase
Front track
Rear track
Front overhang
Rear overhang
Turning circle
Trunk capacity
Fuel tank capacity
Curb weight

GIBLI

195.7 in (4971 mm)
83.8 in (2128 mm)
76.6 in (1945 mm)
57.5 in (1461 mm)
118.0 in (2998 mm)
64.4 in (1635 mm)
65.1 in (1653 mm)
36.8 in (935 mm)
40.9 in (1038 mm)
38.4 ft
17.7 cu ft
21.1 gal
3,990 lbs

GIBLI S

195.7 in (4971 mm)
83.8 in (2128 mm)
76.6 in (1945 mm)
57.5 in (1461 mm)
118.0 in (2998 mm)
64.4 in (1635 mm)
65.1 in (1653 mm)
36.8 in (935 mm)
40.9 in (1038 mm)
38.4 ft
17.7 cu ft
21.1 gal
3,990 lbs

GIBLI S Q4

195.7 in (4971 mm)
83.8 in (2128 mm)
76.6 in (1945 mm)
57.5 in (1461 mm)
118.0 in (2998 mm)
64.4 in (1635 mm)
65.1 in (1653 mm)
36.8 in (935 mm)
40.9 in (1038 mm)
38.4 ft
17.7 cu ft
21.1 gal
4,122 lbs

ENGINE

Number of cylinders and layout
Displacement
Bore
Stroke
Compression ratio
Max. power output
Engine speed at max. power output
Peak torque
Engine speed at peak torque

V6 60°
3.0 L (2979 cm³)
86.5 mm
84.5 mm
9.7:1
345 hp
5,500 rpm
369 lb-ft
4,500 rpm

V6 60°
3.0 L (2979 cm³)
86.5 mm
84.5 mm
9.7:1
424 hp
5,750 rpm
428 lb-ft
2,250-4,000 rpm

V6 60°
3.0 L (2979 cm³)
86.5 mm
84.5 mm
9.7:1
424 hp
5,750 rpm
428 lb-ft
2,250-4,000 rpm

TRANSMISSION

Transmission

Automatic 8 gears

Automatic 8 gears

Automatic 8 gears

PERFORMANCE*

Maximum speed
Acceleration 0-62 mph (0-100 km/h)
Stopping distance 62-0 mph (100-0 km/h)
Fuel consumption (combined)**
Fuel consumption (city)**
Fuel consumption (highway)**

166 mph
5.5 s
116.5 ft
19 mpg
17 mpg
24 mpg

178 mph
4.9 s
114.8 ft
19 mpg
16 mpg
24 mpg

178 mph
4.7 s
114.8 ft
19 mpg
16 mpg
24 mpg

*Maserati SpA test results. Actual acceleration results may vary, depending upon specification of vehicle, road and environmental conditions, testing procedures and driving style.

**EPA estimated mpg. Actual mileage may vary.



THE WORLD OF MASERATI

BECOME A MASTER OF DRIVING

MASTER MASERATI DRIVING COURSES

Every Maserati embodies the principles of GranTurismo, where race-bred performance combines with handcrafted luxury to turn every journey into an unforgettable experience. In that same spirit, Master Maserati driving courses are designed to help you unleash the full potential of a Maserati—whatever your ability or experience, whatever the terrain.

Master Maserati driving courses also reflect the principles of excellence that guide everything we do. These courses—at every level—offer tailored one-to-one instruction from championship-winning drivers who provide coaching from the passenger seat as you drive. A selection of courses provides the opportunity to experience the entire Maserati model range in depth and in safety, alongside the GT4 race car and the MC12, a six-time GT1 world champion. Courses employ the latest technology, such as telemetry and video analysis, to make the driving experience truly immersive and rewarding.

Master Maserati courses are held at the Varano de' Melegari (Parma) circuit, a track with first-class safety standards and excellent on- and off-road facilities nestled in the beautiful Italian countryside. We very much look forward to welcoming you there soon.

MASTER ON TRACK

PRACTICE

MAKE YOUR FIRST DECISIVE MOVE

Imagine a Formula 1 practice session. Now put yourself in the driver's seat. This is where your journey begins. With this course, you'll learn the fundamentals of track driving while safely exploring the performance limits of the full Maserati range: Quattroporte, Ghibli, Levante, GranTurismo and GranTurismo Convertible. The half-day program on the Varano circuit includes theoretical and dynamic sessions with our expert drivers. Upon completion, you'll be well prepared for our full-day Qualifying course.

QUALIFYING

RAISE THE INTENSITY, RAISE THE PACE

Now you're on the quest for faster lap times—just like an F1 qualifying session. This full-day course involves intense driving sessions focused on sharpening technique and further developing your ability. At this driving level, instructors introduce detailed video analysis and vital insights from racing telemetry that will help you fine-tune your skills—and improve your lap times.

RACE

HIT THE TRACK IN A TRUE RACE CAR, THE GT4

The lights are green. It's time to race. You're ready to experience the raw excitement and adrenaline of being a Maserati racing driver. First, you'll get to know the Maserati GT4 race car inside and out. Then, following one-to-one coaching from a racing professional, you'll take to the track and put the car through its paces. As in professional motorsport, you'll be supported by an expert team, including seasoned mechanics and telemetry experts.

CHAMPIONSHIP

REACH THE TOP, GET A TASTE OF THE LEGENDARY

MC12 VERSIONE CORSE

Are you ready to enroll in the master class of Maserati motorsport? This exclusive two-day program helps you perfect your style as you push the performance boundaries. You won't just drive GT4 Maserati race cars, though. You'll also experience hot laps in the legendary MC12. Your driver will be none other than four-time world champion Andrea Bertolini in this magnificent and iconic Maserati race car.

MASTER OFF ROAD

RALLY SHAKEDOWN

TAKE A DRIVE ON THE WILD SIDE

Here's your introduction to the art of off-roading in the Levante, the Maserati of SUVs. In this half-day course, you take on the challenges of the Varano circuit's private nature reserve. This is real-world all-terrain driving, complete with deeply rutted trails, steep inclines, ramps and natural obstacles. Your expert driver will show exactly how the high-riding, technologically advanced Levante keeps you in control—however rough it gets.

RALLY POWER STAGE

IMMERSE YOURSELF IN EVERY POSSIBILITY

A day of adrenaline, on and off the road. This one-day course is your chance to experience the best that Maserati offers in any driving situation. You'll push the limits on rough and low-grip surfaces in the Levante and, before there's time to catch your breath, you'll be putting your skills to the test on the circuit in all Maserati models, with the expert support and guidance of championship-winning instructors from Master Maserati.

MASTER INCENTIVE

TAILOR-MADE COURSES

Nothing bonds a team like the exhilaration and spirit of a Master Maserati driving course. What's more, our instructors can create a custom program to exactly suit the interests and aims of your business or team, and we welcome groups of any size for the number of driving days they'd prefer. For instance, we can provide instruction on the basics of track driving or how to become a racing driver. We offer guidance from expert drivers, one-to-one coaching, video, telemetry recording and the full support of a crew. The driving can also be combined with cultural programs and activities, including a visit to the Panini Motor Museum in Modena, regional culinary experiences and a Maserati factory tour. For your added convenience, we offer a range of supplementary services, from organizing hotels to airport transfers.

ARE YOU READY TO MASTER MASERATI?

For information on availability, pricing, timing and registration, please contact us at info@mastermaserati.it.

THE WORLD OF THE TRIDENT

FINANCIAL SERVICES AND CUSTOMER PROGRAMS

Your authorized Maserati dealer will be pleased to provide you with professional guidance on the various lease and finance options available, and create a package tailored to your individual requirements.

FACTORY TOUR*

Learn about the skills involved in producing some of the world's finest high-performance automobiles by visiting the Maserati factories in Turin and Modena. Our exclusive, 90-minute factory tour includes a welcome reception in our showrooms and a presentation of more than 100 years of Maserati heritage. The tour also includes a guided walk around the assembly line, an opportunity to view the finished cars and a chance to browse the Maserati store.

SHOWROOM TOUR (MODENA ONLY)

For those short on time, we offer a 40-minute guided showroom tour. After a welcome reception and heritage presentation, your guide will take you through the entire model range on display in the Modena showroom. Commentary can be provided in English, Italian, German, French or Spanish. Chinese and Japanese are also available at the Turin factories. It is also possible to combine the Maserati Factory Tour with a Master Maserati driving course and experience the entire World of Maserati. For more information, please email factorytour@maserati.com.

FACTORY DELIVERY EXPERIENCE

The first drive in your new Maserati is one to savor—and there's no better starting line than the birthplace of the car itself. Your event begins at the Maserati showroom, where, after a warm welcome from a Maserati representative—including coffee and drinks—you can take a 90-minute tour of the production line, accompanied by a specialist guide and photographer. After the tour, it's time for the unveiling of your car, where you will receive a thorough explanation of its features and sign the documentation to officially take ownership of your new Maserati. Before we bid you farewell, our photographer will capture the occasion with pictures at the Maserati facilities. The photos from the tour will become a part of a commemorative album created especially for you, sent to your address upon completion. Please allow between two-and-a-half and three hours for the full experience, including the factory tour.

Delivery locations

All models can be delivered to Modena. By the end of 2018, the Quattroporte, Ghibli and Levante will be available for delivery in Turin.

How to book

You can request a factory delivery through your authorized Maserati dealer when you place your order. Approximately one month prior to delivery, a date will be arranged for your Factory Delivery Experience.

*Tours are arranged by appointment only and can be booked through dealers all over the world.

MASERATI COLLECTION

The Maserati Collection of exclusive leisurewear and branded merchandise has been specially created for those with a passion for all things Maserati. Maserati Collection items are available from all authorized Maserati dealers and the Maserati Store at our Modena showroom. Alternatively, items from the Maserati Collection can be purchased online at **maseratistore.com** and delivered directly to you.

MASERATI CLUB

Joining the exclusive Maserati Club means sharing insights and experiencing excitement with other Maserati owners. Members also receive invitations to special motoring events all over the world. Drivers of Maserati automobiles from every era will enjoy driving their cars in a calendar of events created especially for Maserati Club members. The Club provides the link between the company's past, present and future. Visit **maseraticlub.com** for more information.

MASERATI GENUINE ACCESSORIES

Specially conceived to satisfy our customers' needs, Maserati Genuine Accessories offer the perfect combination of design and functionality. The attention to detail, style and quality of each accessory—many developed expressly for the Ghibli—reveals the very essence of the Maserati brand. The Ghibli accessories range includes exclusive wheel rims and Maserati Genuine Tires. Maserati-branded transport accessories include the Luggage Compartment Mat and Foldable Box, as well as the Ski & Snowboard Bag. Added to the range are care and safety accessories, including stylish car covers, which ensure the Ghibli is perfectly protected. You can discover the full range of Maserati Genuine Accessories in the dedicated brochure, at your authorized Maserati dealer or on our official website at **maserati.com**.

MASERATI CLASSIC

Created for enthusiasts and owners of vintage Maserati automobiles, Maserati Classiche is an organization dedicated to those who wish to engage with the marque's glorious past. Maserati Classiche includes products that celebrate the company's history, including paintings of momentous events, original reproductions of parts catalogs, owners' handbooks and historic brochures, clothing, scale models and more. All the latest items can be found on maserati.com in the Maserati Classic section. For more information, email **maserati.classiche@maserati.com**.

NORTH AMERICA

USA

Canada

CENTRAL/SOUTH AMERICA

Argentina

Brazil

Chile

Colombia

Costa Rica

Dominican Republic

Ecuador

Guatemala

Mexico

Panama

Peru

Puerto Rico

Uruguay

EUROPE

Andorra

Austria

Belarus

Belgium

Bulgaria

Cyprus

Czech Republic

Denmark

Estonia

France & Monaco

Germany

Greece

Hungary

Italy

Lithuania

Luxembourg

Netherlands

Norway

Poland

Portugal

Romania

Russia

Slovenia

Spain

Sweden

Switzerland

Turkey

Ukraine

United Kingdom

AFRICA & MIDDLE EAST

Bahrain

Egypt

Israel

Jordan

Kuwait

Lebanon

Morocco

Oman

Qatar

Saudi Arabia

South Africa

United Arab Emirates

ASIA/OCEANIA

Australia

China

Hong Kong

India

Indonesia

Japan

Kazakhstan

Malaysia

New Zealand

Philippines

Singapore

South Korea

Taiwan

Thailand

Vietnam







GranLusso



Rosso Potente is an available color for an additional charge.

GranSport



The illustrations and texts contained in this brochure are based on information available at the time of production and do not contain a description of specific characteristics of the car by the Manufacturer. Some models, equipment and accessories may not be available or may become available only after the automobile's launch on the market. Maserati reserves the right to modify colors, designs and technical features at any time and without advance notice. Official Maserati dealers will be glad to provide further details and updates in this regard. © 2018 Maserati North America, Inc. All rights reserved. Maserati and the Trident logo are registered trademarks of Maserati SpA. Maserati urges you to obey all posted speed limits.



MASERATIUSA.COM
MASERATI NORTH AMERICA, INC. | 1 CHRYSLER DRIVE | AUBURN HILLS, MI 48326

920018242