



LIVE | WORK | PLAY

A Modern lifestyle at
affordable prices

PRICE LIST USD

www.tafagriclobal.com

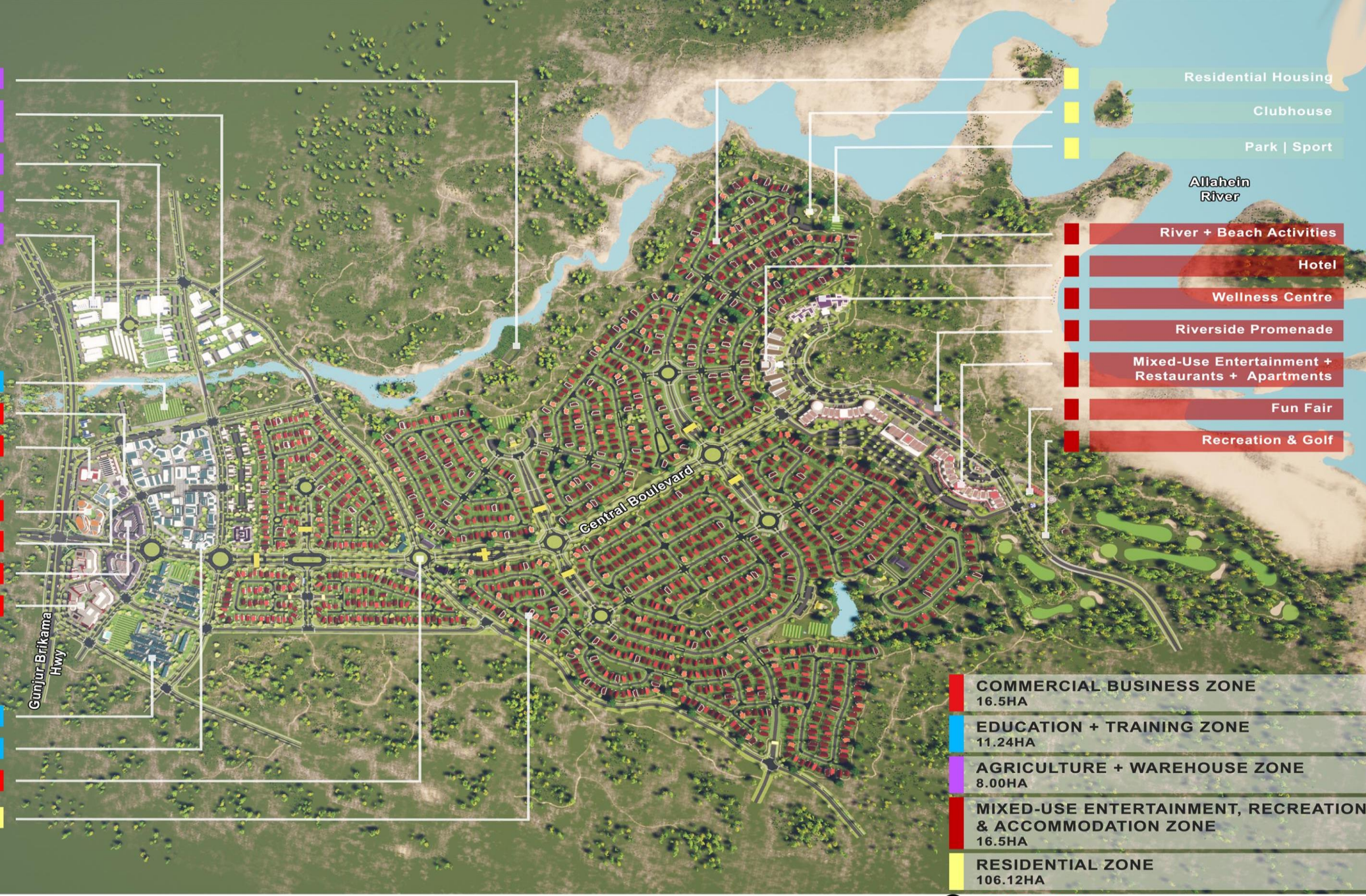
MASTER PLAN

- Aquaculture Farms
- Agricultural Research + Development
- Horticulture Gardens
- Hydroponics Greenhouses
- Showrooms + Warehouses

- Sport
- Police + Fire Services
- Petrol Filling Station

- Offices + Administration
- Health Clinic
- Multi-Transit Hub
- Shops, Market + Businesses

- Senior + Primary Schools
- University + Vocational Training
- Central Community Node
- Residential Housing



- Residential Housing
- Clubhouse
- Park | Sport

- River + Beach Activities
- Hotel
- Wellness Centre
- Riverside Promenade
- Mixed-Use Entertainment + Restaurants + Apartments
- Fun Fair
- Recreation & Golf

| | |
|---------------------------------------------------------------------|----------|
| COMMERCIAL BUSINESS ZONE | 16.5HA |
| EDUCATION + TRAINING ZONE | 11.24HA |
| AGRICULTURE + WAREHOUSE ZONE | 8.00HA |
| MIXED-USE ENTERTAINMENT, RECREATION & ACCOMMODATION ZONE | 16.5HA |
| RESIDENTIAL ZONE | 106.12HA |

BENNA ESTATE SITE PLAN



Facilities

- Shopping Center
- Petrol Station
- Market / shops / Restaurants
- Offics / Businesses
- Education
 - Kindergarten
 - Lower & Middle School
 - High School
 - University
 - Vocational School
- Sports Facility & Gym

- Transit Center
- Institution / Government
- Industrial / Logistics
- Agricultural
- Boutique hotel
- Student Accommodation
- Parks/Open space
- Residential Estate
 - Affordable Housing
 - Luxury Villas
 - Retirement Village



2 BEDROOM bungalow 49 SQM

MARIATOU



- 2 BEDROOMS
- BATHS: 2
- LIVING ROOM: 1
- KITCHEN: 1 PARTLY FITTED
- DINNING AREA

PRICE LIST

| Plot Number | Plot Size (sqm) | 49m2 - 2 bed | | |
|--------------|-----------------|--------------|----------|------------------------|
| | | Price (USD) | 25% | Est. Monthly Repayment |
| BN 148 | 178.5 | \$46,281 | \$11,570 | \$440 |
| BN 145 | 180.8 | \$46,410 | \$11,603 | \$441 |
| BN 157 | 187 | \$46,758 | \$11,690 | \$444 |
| BN 146 /147 | 187.5 | \$46,786 | \$11,697 | \$445 |
| BN 143 | 190.5 | \$46,954 | \$11,739 | \$446 |
| BN 144 | 192 | \$47,039 | \$11,760 | \$447 |
| BN 158 | 202 | \$47,600 | \$11,900 | \$452 |
| BN 156 | 265 | \$51,134 | \$12,783 | \$486 |
| BN 122 | 279 | \$51,919 | \$12,980 | \$493 |
| BN 155 | 292 | \$52,649 | \$13,162 | \$500 |
| BN 100 | 312 | \$53,771 | \$13,443 | \$511 |
| BN 139 - 142 | 312.5 | \$53,799 | \$13,450 | \$511 |
| BN 101 | 324 | \$54,444 | \$13,611 | \$517 |
| BN 124 & 125 | 332 | \$54,893 | \$13,723 | \$522 |
| BN 130 & 131 | 342 | \$55,454 | \$13,863 | \$527 |
| BN 121 | 344.8 | \$55,611 | \$13,903 | \$528 |
| BN 112 | 346 | \$55,678 | \$13,920 | \$529 |
| BN 129 | 352 | \$56,015 | \$14,004 | \$532 |
| BN 114 | 363 | \$56,632 | \$14,158 | \$538 |
| BN 151 & 153 | 369 | \$56,968 | \$14,242 | \$541 |
| BN 149 | 370 | \$57,024 | \$14,256 | \$542 |
| BN 150 | 372 | \$57,137 | \$14,284 | \$543 |
| BN 152 | 374 | \$57,249 | \$14,312 | \$544 |
| BN 106 - 120 | 375 | \$57,305 | \$14,326 | \$544 |
| BN 154 | 376 | \$57,361 | \$14,340 | \$545 |
| BN 113 | 380.8 | \$57,630 | \$14,408 | \$548 |
| BN 137 | 383.5 | \$57,782 | \$14,445 | \$549 |
| BN 138 | 383.7 | \$57,793 | \$14,448 | \$549 |
| BN 136 | 384.9 | \$57,860 | \$14,465 | \$550 |
| BN 135 | 385 | \$57,866 | \$14,466 | \$550 |
| BN 134 | 386 | \$57,922 | \$14,481 | \$550 |
| BN 133 | 387 | \$57,978 | \$14,495 | \$551 |
| BN 132 | 387.9 | \$58,029 | \$14,507 | \$551 |
| BN 128 | 403.8 | \$58,921 | \$14,730 | \$560 |
| BN 127 | 413 | \$59,437 | \$14,859 | \$565 |
| BN 126 | 415 | \$59,549 | \$14,887 | \$566 |
| BN 102 | 430 | \$60,390 | \$15,098 | \$574 |
| BN 103 | 435 | \$60,671 | \$15,168 | \$576 |
| BN 105 | 440 | \$60,951 | \$15,238 | \$579 |
| BN 123 | 500 | \$64,317 | \$16,079 | \$611 |
| BN 104 | 514 | \$65,103 | \$16,276 | \$619 |

2 BEDROOM bungalow 68 SQM

HAJA



- 2 BEDROOMS
- BATHS:2
- LIVING ROOM: 1
- KITCHEN: 1 PARTLY FITTED
- DINNING AREA

PRICE LIST

| Plot Number | Plot Size (sqm) | 2 Bed Haja - 68m2 | | |
|--------------|-----------------|-------------------|----------|------------------------|
| | | Price (USD) | 25% | Est. Monthly Repayment |
| BN 148 | 178.5 | \$52,297 | \$13,074 | \$497 |
| BN 145 | 180.8 | \$52,426 | \$13,107 | \$498 |
| BN 157 | 187 | \$52,774 | \$13,193 | \$501 |
| BN 146 /147 | 187.5 | \$52,802 | \$13,201 | \$502 |
| BN 143 | 190.5 | \$52,970 | \$13,243 | \$503 |
| BN 144 | 192 | \$53,054 | \$13,264 | \$504 |
| BN 158 | 202 | \$53,615 | \$13,404 | \$509 |
| BN 156 | 265 | \$57,150 | \$14,287 | \$543 |
| BN 122 | 279 | \$57,935 | \$14,484 | \$550 |
| BN 155 | 292 | \$58,664 | \$14,666 | \$557 |
| BN 100 | 312 | \$59,786 | \$14,947 | \$568 |
| BN 139 - 142 | 312.5 | \$59,815 | \$14,954 | \$568 |
| BN 101 | 324 | \$60,460 | \$15,115 | \$574 |
| BN 124 & 125 | 332 | \$60,908 | \$15,227 | \$579 |
| BN 130 & 131 | 342 | \$61,469 | \$15,367 | \$584 |
| BN 121 | 344.8 | \$61,627 | \$15,407 | \$585 |
| BN 112 | 346 | \$61,694 | \$15,423 | \$586 |
| BN 129 | 352 | \$62,030 | \$15,508 | \$589 |
| BN 114 | 363 | \$62,648 | \$15,662 | \$595 |
| BN 151 & 153 | 369 | \$62,984 | \$15,746 | \$598 |
| BN 149 | 370 | \$63,040 | \$15,760 | \$599 |
| BN 150 | 372 | \$63,152 | \$15,788 | \$600 |
| BN 152 | 374 | \$63,265 | \$15,816 | \$601 |
| BN 106 - 120 | 375 | \$63,321 | \$15,830 | \$602 |
| BN 154 | 376 | \$63,377 | \$15,844 | \$602 |
| BN 113 | 380.8 | \$63,646 | \$15,912 | \$605 |
| BN 137 | 383.5 | \$63,798 | \$15,949 | \$606 |
| BN 138 | 383.7 | \$63,809 | \$15,952 | \$606 |
| BN 136 | 384.9 | \$63,876 | \$15,969 | \$607 |
| BN 135 | 385 | \$63,882 | \$15,970 | \$607 |
| BN 134 | 386 | \$63,938 | \$15,984 | \$607 |
| BN 133 | 387 | \$63,994 | \$15,998 | \$608 |
| BN 132 | 387.9 | \$64,044 | \$16,011 | \$608 |
| BN 128 | 403.8 | \$64,936 | \$16,234 | \$617 |
| BN 127 | 413 | \$65,453 | \$16,363 | \$622 |
| BN 126 | 415 | \$65,565 | \$16,391 | \$623 |
| BN 102 | 430 | \$66,406 | \$16,602 | \$631 |
| BN 103 | 435 | \$66,687 | \$16,672 | \$634 |
| BN 105 | 440 | \$66,967 | \$16,742 | \$636 |
| BN 123 | 500 | \$70,333 | \$17,583 | \$668 |
| BN 104 | 514 | \$71,119 | \$17,780 | \$676 |

3 BEDROOM bungalow 70 SQM

OULAYE



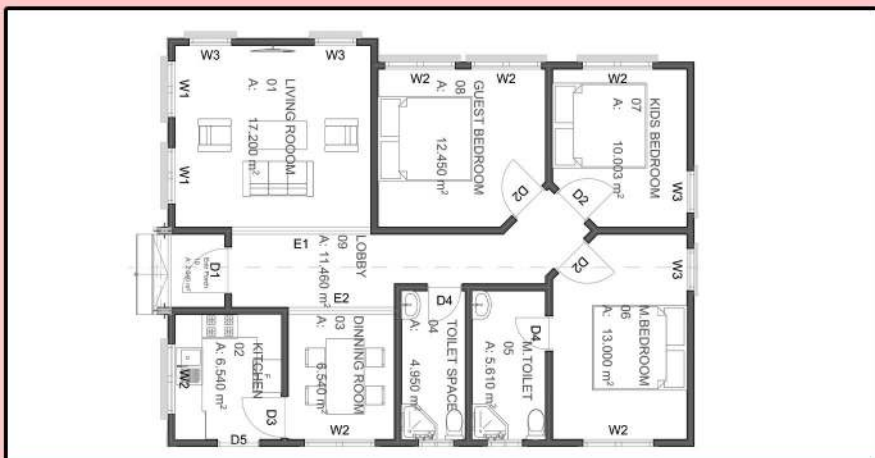
- 3 BEDROOMS
- BATHS:2
- LIVING ROOM: 1
- KITCHEN: 1 PARTLY FITTED
- DINNING AREA

PRICE LIST

| Plot Number | Plot Size (sqm) | 70m2 - 3 bed | | |
|--------------|-----------------|--------------|----------|------------------------|
| | | Price (USD) | 25% | Est. Monthly Repayment |
| BN 148 | 178.5 | \$53,507 | \$13,377 | \$508 |
| BN 145 | 180.8 | \$53,636 | \$13,409 | \$510 |
| BN 157 | 187 | \$53,983 | \$13,496 | \$513 |
| BN 146 /147 | 187.5 | \$54,011 | \$13,503 | \$513 |
| BN 143 | 190.5 | \$54,180 | \$13,545 | \$515 |
| BN 144 | 192 | \$54,264 | \$13,566 | \$516 |
| BN 158 | 202 | \$54,825 | \$13,706 | \$521 |
| BN 156 | 265 | \$58,359 | \$14,590 | \$554 |
| BN 122 | 279 | \$59,145 | \$14,786 | \$562 |
| BN 155 | 292 | \$59,874 | \$14,968 | \$569 |
| BN 100 | 312 | \$60,996 | \$15,249 | \$580 |
| BN 139 - 142 | 312.5 | \$61,024 | \$15,256 | \$580 |
| BN 101 | 324 | \$61,669 | \$15,417 | \$586 |
| BN 124 & 125 | 332 | \$62,118 | \$15,529 | \$590 |
| BN 130 & 131 | 342 | \$62,679 | \$15,670 | \$595 |
| BN 121 | 344.8 | \$62,836 | \$15,709 | \$597 |
| BN 112 | 346 | \$62,903 | \$15,726 | \$598 |
| BN 129 | 352 | \$63,240 | \$15,810 | \$601 |
| BN 114 | 363 | \$63,857 | \$15,964 | \$607 |
| BN 151 & 153 | 369 | \$64,194 | \$16,048 | \$610 |
| BN 149 | 370 | \$64,250 | \$16,062 | \$610 |
| BN 150 | 372 | \$64,362 | \$16,090 | \$611 |
| BN 152 | 374 | \$64,474 | \$16,119 | \$613 |
| BN 106 - 120 | 375 | \$64,530 | \$16,133 | \$613 |
| BN 154 | 376 | \$64,586 | \$16,147 | \$614 |
| BN 113 | 380.8 | \$64,856 | \$16,214 | \$616 |
| BN 137 | 383.5 | \$65,007 | \$16,252 | \$618 |
| BN 138 | 383.7 | \$65,018 | \$16,255 | \$618 |
| BN 136 | 384.9 | \$65,086 | \$16,271 | \$618 |
| BN 135 | 385 | \$65,091 | \$16,273 | \$618 |
| BN 134 | 386 | \$65,147 | \$16,287 | \$619 |
| BN 133 | 387 | \$65,203 | \$16,301 | \$619 |
| BN 132 | 387.9 | \$65,254 | \$16,313 | \$620 |
| BN 128 | 403.8 | \$66,146 | \$16,536 | \$628 |
| BN 127 | 413 | \$66,662 | \$16,666 | \$633 |
| BN 126 | 415 | \$66,774 | \$16,694 | \$634 |
| BN 102 | 430 | \$67,616 | \$16,904 | \$642 |
| BN 103 | 435 | \$67,896 | \$16,974 | \$645 |
| BN 105 | 440 | \$68,177 | \$17,044 | \$648 |
| BN 123 | 500 | \$71,543 | \$17,886 | \$680 |
| BN 104 | 514 | \$72,328 | \$18,082 | \$687 |

3 BEDROOM bungalow 90 SQM

NAFFIE



- 3 BEDROOMS
- BATHS:2
- LIVING ROOM: 1
- KITCHEN: 1 PARTLY FITTED
- DINNING AREA

PRICE LIST

| | | 3 Bed Naffie - 90m2 | | |
|--------------|-----------|---------------------|----------|------------------------|
| | PLOT SIZE | Price (USD) | 25% | Est. Monthly Repayment |
| BN 156 | 265 | \$64,352 | \$16,088 | \$611 |
| BN 122 | 279 | \$65,137 | \$16,284 | \$619 |
| BN 155 | 292 | \$65,866 | \$16,467 | \$626 |
| BN 100 | 312 | \$66,988 | \$16,747 | \$636 |
| BN 139 - 142 | 312.5 | \$67,016 | \$16,754 | \$637 |
| BN 101 | 324 | \$67,662 | \$16,915 | \$643 |
| BN 124 & 125 | 332 | \$68,110 | \$17,028 | \$647 |
| BN 130 & 131 | 342 | \$68,671 | \$17,168 | \$652 |
| BN 121 | 344.8 | \$68,828 | \$17,207 | \$654 |
| BN 112 | 346 | \$68,896 | \$17,224 | \$655 |
| BN 129 | 352 | \$69,232 | \$17,308 | \$658 |
| BN 114 | 363 | \$69,849 | \$17,462 | \$664 |
| BN 151 & 153 | 369 | \$70,186 | \$17,547 | \$667 |
| BN 149 | 370 | \$70,242 | \$17,561 | \$667 |
| BN 150 | 372 | \$70,354 | \$17,589 | \$668 |
| BN 152 | 374 | \$70,467 | \$17,617 | \$669 |
| BN 106 - 111 | 375 | \$70,523 | \$17,631 | \$670 |
| BN 111 -120 | 375 | \$70,523 | \$17,631 | \$670 |
| BN 115 - 120 | 375 | \$70,523 | \$17,631 | \$670 |
| BN 154 | 376 | \$70,579 | \$17,645 | \$671 |
| BN 113 | 380.8 | \$70,848 | \$17,712 | \$673 |
| BN 137 | 383.5 | \$71,000 | \$17,750 | \$675 |
| BN 138 | 383.7 | \$71,011 | \$17,753 | \$675 |
| BN 136 | 384.9 | \$71,078 | \$17,770 | \$675 |
| BN 135 | 385 | \$71,084 | \$17,771 | \$675 |
| BN 134 | 386 | \$71,140 | \$17,785 | \$676 |
| BN 133 | 387 | \$71,196 | \$17,799 | \$676 |
| BN 132 | 387.9 | \$71,246 | \$17,812 | \$677 |
| BN 128 | 403.8 | \$72,138 | \$18,035 | \$685 |
| BN 127 | 413 | \$72,654 | \$18,164 | \$690 |
| BN 126 | 415 | \$72,767 | \$18,192 | \$691 |
| BN 102 | 430 | \$73,608 | \$18,402 | \$699 |
| BN 103 | 435 | \$73,889 | \$18,472 | \$702 |
| BN 105 | 440 | \$74,169 | \$18,542 | \$705 |
| BN 123 | 500 | \$77,535 | \$19,384 | \$737 |
| BN 104 | 514 | \$78,321 | \$19,580 | \$744 |

3 BEDROOM bungalow 90 SOM

Majula



- BEDROOMS :3
- BATHROOM: 3
- LIVING ROOM:1
- DINNING AREA
- KITCHEN: PARTLY FITTED

PRICE LIST

| | | 3 Bed Majula - 90m2 | | |
|--------------|-----------------|---------------------|------------------|------------------------|
| Plot Number | Plot Size (sqm) | Price (USD) | 25% Down Payment | Est. Monthly Repayment |
| BN 156 | 265 | \$64,352 | \$16,088 | \$611 |
| BN 122 | 279 | \$65,137 | \$16,284 | \$619 |
| BN 155 | 292 | \$65,866 | \$16,467 | \$626 |
| BN 100 | 312 | \$66,988 | \$16,747 | \$636 |
| BN 139 - 142 | 312.5 | \$67,016 | \$16,754 | \$637 |
| BN 101 | 324 | \$67,662 | \$16,915 | \$643 |
| BN 124 & 125 | 332 | \$68,110 | \$17,028 | \$647 |
| BN 130 & 131 | 342 | \$68,671 | \$17,168 | \$652 |
| BN 121 | 344.8 | \$68,828 | \$17,207 | \$654 |
| BN 112 | 346 | \$68,896 | \$17,224 | \$655 |
| BN 129 | 352 | \$69,232 | \$17,308 | \$658 |
| BN 114 | 363 | \$69,849 | \$17,462 | \$664 |
| BN 151 & 153 | 369 | \$70,186 | \$17,547 | \$667 |
| BN 149 | 370 | \$70,242 | \$17,561 | \$667 |
| BN 150 | 372 | \$70,354 | \$17,589 | \$668 |
| BN 152 | 374 | \$70,467 | \$17,617 | \$669 |
| BN 106 - 120 | 375 | \$70,523 | \$17,631 | \$670 |
| BN 154 | 376 | \$70,579 | \$17,645 | \$671 |
| BN 113 | 380.8 | \$70,848 | \$17,712 | \$673 |
| BN 137 | 383.5 | \$71,000 | \$17,750 | \$675 |
| BN 138 | 383.7 | \$71,011 | \$17,753 | \$675 |
| BN 136 | 384.9 | \$71,078 | \$17,770 | \$675 |
| BN 135 | 385 | \$71,084 | \$17,771 | \$675 |
| BN 134 | 386 | \$71,140 | \$17,785 | \$676 |
| BN 133 | 387 | \$71,196 | \$17,799 | \$676 |
| BN 132 | 387.9 | \$71,246 | \$17,812 | \$677 |
| BN 128 | 403.8 | \$72,138 | \$18,035 | \$685 |
| BN 127 | 413 | \$72,654 | \$18,164 | \$690 |
| BN 126 | 415 | \$72,767 | \$18,192 | \$691 |
| BN 102 | 430 | \$73,608 | \$18,402 | \$699 |
| BN 103 | 435 | \$73,889 | \$18,472 | \$702 |
| BN 105 | 440 | \$74,169 | \$18,542 | \$705 |
| BN 123 | 500 | \$77,535 | \$19,384 | \$737 |
| BN 104 | 514 | \$78,321 | \$19,580 | \$744 |

3 BEDROOM
bungalow 100 SQM

SAFFIE



- **BEDROOMS: 3**
- **BATHROOM: 3**
- **LIVING ROOM: 1**
- **DINNING: 1**

PRICE LIST

| Plot Number | Plot Size (sqm) | 3 Bed Saffie - 100m2 | | |
|--------------|-----------------|----------------------|----------|------------------------|
| | | Price (USD) | 25% | Est. Monthly Repayment |
| BN 156 | 265 | \$70,613 | \$17,653 | \$671 |
| BN 122 | 279 | \$71,398 | \$17,849 | \$678 |
| BN 155 | 292 | \$72,127 | \$18,032 | \$685 |
| BN 100 | 312 | \$73,249 | \$18,312 | \$696 |
| BN 139 - 142 | 312.5 | \$73,277 | \$18,319 | \$696 |
| BN 101 | 324 | \$73,922 | \$18,481 | \$702 |
| BN 124 & 125 | 332 | \$74,371 | \$18,593 | \$707 |
| BN 130 & 131 | 342 | \$74,932 | \$18,733 | \$712 |
| BN 121 | 344.8 | \$75,089 | \$18,772 | \$713 |
| BN 112 | 346 | \$75,157 | \$18,789 | \$714 |
| BN 129 | 352 | \$75,493 | \$18,873 | \$717 |
| BN 114 | 363 | \$76,110 | \$19,028 | \$723 |
| BN 151 & 153 | 369 | \$76,447 | \$19,112 | \$726 |
| BN 149 | 370 | \$76,503 | \$19,126 | \$727 |
| BN 150 | 372 | \$76,615 | \$19,154 | \$728 |
| BN 152 | 374 | \$76,727 | \$19,182 | \$729 |
| BN 106 - 120 | 375 | \$76,784 | \$19,196 | \$729 |
| BN 154 | 376 | \$76,840 | \$19,210 | \$730 |
| BN 113 | 380.8 | \$77,109 | \$19,277 | \$733 |
| BN 137 | 383.5 | \$77,260 | \$19,315 | \$734 |
| BN 138 | 383.7 | \$77,272 | \$19,318 | \$734 |
| BN 136 | 384.9 | \$77,339 | \$19,335 | \$735 |
| BN 135 | 385 | \$77,345 | \$19,336 | \$735 |
| BN 134 | 386 | \$77,401 | \$19,350 | \$735 |
| BN 133 | 387 | \$77,457 | \$19,364 | \$736 |
| BN 132 | 387.9 | \$77,507 | \$19,377 | \$736 |
| BN 128 | 403.8 | \$78,399 | \$19,600 | \$745 |
| BN 127 | 413 | \$78,915 | \$19,729 | \$750 |
| BN 126 | 415 | \$79,028 | \$19,757 | \$751 |
| BN 102 | 430 | \$79,869 | \$19,967 | \$759 |
| BN 103 | 435 | \$80,150 | \$20,037 | \$761 |
| BN 105 | 440 | \$80,430 | \$20,108 | \$764 |
| BN 123 | 500 | \$83,796 | \$20,949 | \$796 |
| BN 104 | 514 | \$84,581 | \$21,145 | \$804 |

3 BEDROOM bungalow 120 SQM

ABBIS



- 3 BEDROOMS
- BATHS: 2
- LIVING ROOM: 1
- KITCHEN: 1 PARTLY FITTED
- DINNING AREA

PRICE LIST

| | | 3 Bed Abbis - 120m2 | | |
|--------------|-----------------|---------------------|----------|------------------------|
| Plot Number | Plot Size (sqm) | Price (USD) | 25% | Est. Monthly Repayment |
| BN 100 | 312 | \$79,771 | \$19,943 | \$758 |
| BN 139 - 142 | 312.5 | \$79,799 | \$19,950 | \$758 |
| BN 101 | 324 | \$80,444 | \$20,111 | \$764 |
| BN 124 & 125 | 332 | \$80,893 | \$20,223 | \$769 |
| BN 130 & 131 | 342 | \$81,454 | \$20,363 | \$774 |
| BN 121 | 344.8 | \$81,611 | \$20,403 | \$775 |
| BN 112 | 346 | \$81,678 | \$20,420 | \$776 |
| BN 129 | 352 | \$82,015 | \$20,504 | \$779 |
| BN 114 | 363 | \$82,632 | \$20,658 | \$785 |
| BN 151 & 153 | 369 | \$82,969 | \$20,742 | \$788 |
| BN 149 | 370 | \$83,025 | \$20,756 | \$789 |
| BN 150 | 372 | \$83,137 | \$20,784 | \$790 |
| BN 152 | 374 | \$83,249 | \$20,812 | \$791 |
| BN 106 - 120 | 375 | \$83,305 | \$20,826 | \$791 |
| BN 154 | 376 | \$83,361 | \$20,840 | \$792 |
| BN 113 | 380.8 | \$83,631 | \$20,908 | \$795 |
| BN 137 | 383.5 | \$83,782 | \$20,946 | \$796 |
| BN 138 | 383.7 | \$83,793 | \$20,948 | \$796 |
| BN 136 | 384.9 | \$83,861 | \$20,965 | \$797 |
| BN 135 | 385 | \$83,866 | \$20,967 | \$797 |
| BN 134 | 386 | \$83,922 | \$20,981 | \$797 |
| BN 133 | 387 | \$83,978 | \$20,995 | \$798 |
| BN 132 | 387.9 | \$84,029 | \$21,007 | \$798 |
| BN 128 | 403.8 | \$84,921 | \$21,230 | \$807 |
| BN 127 | 413 | \$85,437 | \$21,359 | \$812 |
| BN 126 | 415 | \$85,549 | \$21,387 | \$813 |
| BN 102 | 430 | \$86,391 | \$21,598 | \$821 |
| BN 103 | 435 | \$86,671 | \$21,668 | \$823 |
| BN 105 | 440 | \$86,952 | \$21,738 | \$826 |
| BN 123 | 500 | \$90,318 | \$22,579 | \$858 |
| BN 104 | 514 | \$91,103 | \$22,776 | \$866 |

4 BEDROOM
bungalow 133 SQM

SALLY



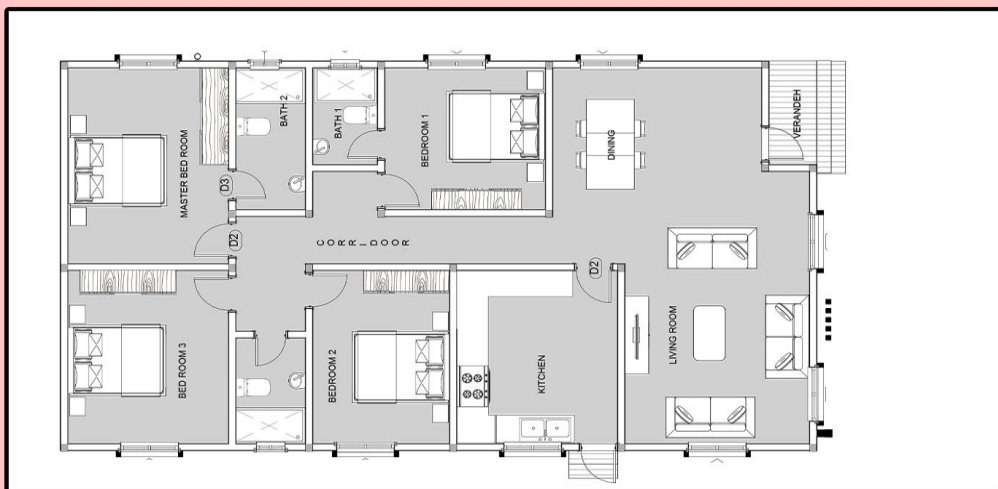
- **BEDROOMS:4**
- **2 ENSUITE BEDROOMS**
- **BATHROOMS: 2 SHARED**
- **LIVING ROOM:1 | PANTRY**
- **KITCHEN: PARTLY FITTED | DINNING AREA**

PRICE LIST

| | | 4 Bed Sally - 133m2 | | |
|--------------|-----------------|---------------------|----------|------------------------|
| Plot Number | Plot Size (sqm) | Price (USD) | 25% | Est. Monthly Repayment |
| BN 100 | 312 | \$84,076 | \$21,019 | \$799 |
| BN 139 - 142 | 312.5 | \$84,104 | \$21,026 | \$799 |
| BN 101 | 324 | \$84,749 | \$21,187 | \$805 |
| BN 124 & 125 | 332 | \$85,198 | \$21,300 | \$809 |
| BN 130 & 131 | 342 | \$85,759 | \$21,440 | \$815 |
| BN 121 | 344.8 | \$85,916 | \$21,479 | \$816 |
| BN 112 | 346 | \$85,983 | \$21,496 | \$817 |
| BN 129 | 352 | \$86,320 | \$21,580 | \$820 |
| BN 114 | 363 | \$86,937 | \$21,734 | \$826 |
| BN 151 & 153 | 369 | \$87,274 | \$21,818 | \$829 |
| BN 149 | 370 | \$87,330 | \$21,832 | \$830 |
| BN 150 | 372 | \$87,442 | \$21,861 | \$831 |
| BN 152 | 374 | \$87,554 | \$21,889 | \$832 |
| BN 106 - 120 | 375 | \$87,610 | \$21,903 | \$832 |
| BN 154 | 376 | \$87,666 | \$21,917 | \$833 |
| BN 113 | 380.8 | \$87,936 | \$21,984 | \$835 |
| BN 137 | 383.5 | \$88,087 | \$22,022 | \$837 |
| BN 138 | 383.7 | \$88,098 | \$22,025 | \$837 |
| BN 136 | 384.9 | \$88,166 | \$22,041 | \$838 |
| BN 135 | 385 | \$88,171 | \$22,043 | \$838 |
| BN 134 | 386 | \$88,227 | \$22,057 | \$838 |
| BN 133 | 387 | \$88,284 | \$22,071 | \$839 |
| BN 132 | 387.9 | \$88,334 | \$22,084 | \$839 |
| BN 128 | 403.8 | \$89,226 | \$22,307 | \$848 |
| BN 127 | 413 | \$89,742 | \$22,436 | \$853 |
| BN 126 | 415 | \$89,854 | \$22,464 | \$854 |
| BN 102 | 430 | \$90,696 | \$22,674 | \$862 |
| BN 103 | 435 | \$90,976 | \$22,744 | \$864 |
| BN 105 | 440 | \$91,257 | \$22,814 | \$867 |
| BN 123 | 500 | \$94,623 | \$23,656 | \$899 |
| BN 104 | 514 | \$95,408 | \$23,852 | \$906 |

4 BEDROOM bungalow 133 SQM

AISHA



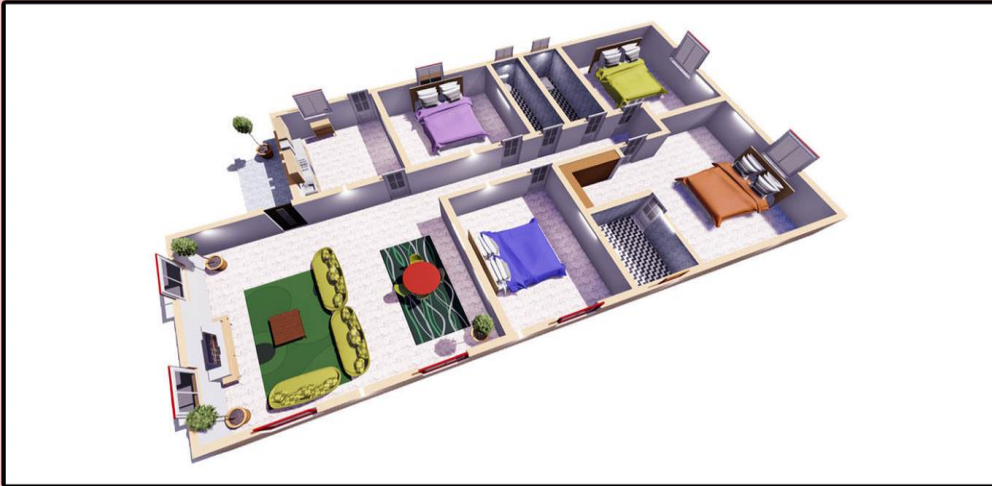
- **BEDROOMS: 4**
- **BATHROOMS 2 AND 1 GUEST WASH ROOM**
- **DINNING: 1**
- **LIVING :1**
- **KITCHEN: 1 PARTLY FITTED**

PRICE LIST

| Plot Number | Plot Size (sqm) | 4 Bed Aisha - 133m2 | | |
|--------------|-----------------|---------------------|----------|------------------------|
| | | Price (USD) | 25% | Est. Monthly Repayment |
| BN 100 | 312 | \$74,732 | \$18,683 | \$710 |
| BN 139 - 142 | 312.5 | \$74,760 | \$18,690 | \$710 |
| BN 101 | 324 | \$75,405 | \$18,851 | \$716 |
| BN 124 & 125 | 332 | \$75,854 | \$18,963 | \$721 |
| BN 130 & 131 | 342 | \$76,415 | \$19,104 | \$726 |
| BN 121 | 344.8 | \$76,572 | \$19,143 | \$727 |
| BN 112 | 346 | \$76,639 | \$19,160 | \$728 |
| BN 129 | 352 | \$76,976 | \$19,244 | \$731 |
| BN 114 | 363 | \$77,593 | \$19,398 | \$737 |
| BN 151 & 153 | 369 | \$77,929 | \$19,482 | \$740 |
| BN 153 | 369 | \$77,929 | \$19,482 | \$740 |
| BN 149 | 370 | \$77,986 | \$19,496 | \$741 |
| BN 150 | 372 | \$78,098 | \$19,524 | \$742 |
| BN 152 | 374 | \$78,210 | \$19,552 | \$743 |
| BN 106 - 111 | 375 | \$78,266 | \$19,567 | \$744 |
| BN 111 -120 | 375 | \$78,266 | \$19,567 | \$744 |
| BN 154 | 376 | \$78,322 | \$19,581 | \$744 |
| BN 113 | 380.8 | \$78,591 | \$19,648 | \$747 |
| BN 137 | 383.5 | \$78,743 | \$19,686 | \$748 |
| BN 138 | 383.7 | \$78,754 | \$19,689 | \$748 |
| BN 136 | 384.9 | \$78,821 | \$19,705 | \$749 |
| BN 135 | 385 | \$78,827 | \$19,707 | \$749 |
| BN 134 | 386 | \$78,883 | \$19,721 | \$749 |
| BN 133 | 387 | \$78,939 | \$19,735 | \$750 |
| BN 132 | 387.9 | \$78,990 | \$19,747 | \$750 |
| BN 128 | 403.8 | \$79,882 | \$19,970 | \$759 |
| BN 127 | 413 | \$80,398 | \$20,099 | \$764 |
| BN 126 | 415 | \$80,510 | \$20,128 | \$765 |
| BN 102 | 430 | \$81,352 | \$20,338 | \$773 |
| BN 103 | 435 | \$81,632 | \$20,408 | \$776 |
| BN 105 | 440 | \$81,913 | \$20,478 | \$778 |
| BN 123 | 500 | \$85,279 | \$21,320 | \$810 |
| BN 104 | 514 | \$86,064 | \$21,516 | \$818 |

4 BEDROOM
bungalow 133 SQM

SARATA



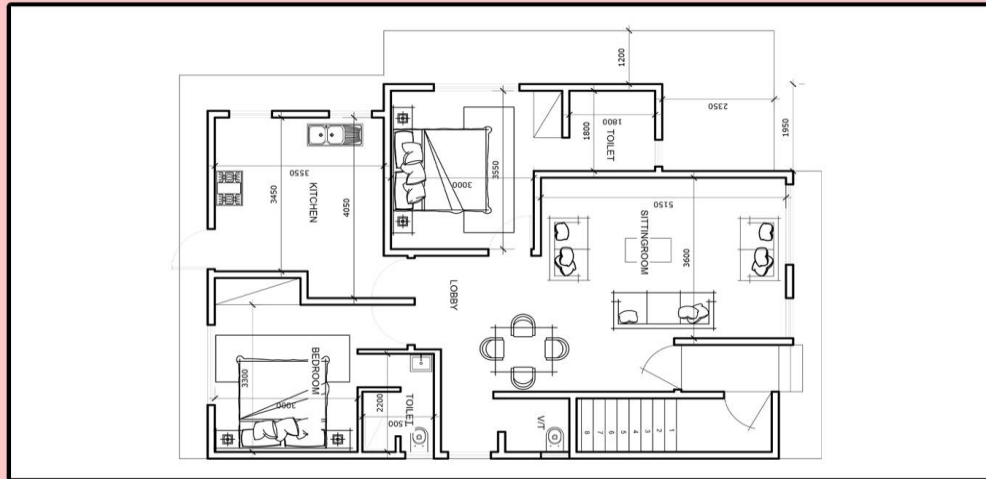
- **BEDROOMS: 4**
- **MASTER BEDROOM WITH WALK-IN CLOSET**
- **BATHROOM: 3**
- **LIVING ROOM : 1**

PRICE LIST

| | | 4 Bed Sarata - 133m2 | | |
|--------------|-----------------|----------------------|----------|------------------------|
| Plot Number | Plot Size (sqm) | Price (USD) | 25% | Est. Monthly Repayment |
| BN 100 | 312 | \$80,264 | \$20,066 | \$763 |
| BN 139 - 142 | 312.5 | \$80,292 | \$20,073 | \$763 |
| BN 101 | 324 | \$80,937 | \$20,234 | \$769 |
| BN 124 & 125 | 332 | \$81,386 | \$20,346 | \$773 |
| BN 130 & 131 | 342 | \$81,947 | \$20,487 | \$779 |
| BN 121 | 344.8 | \$82,104 | \$20,526 | \$780 |
| BN 112 | 346 | \$82,171 | \$20,543 | \$781 |
| BN 129 | 352 | \$82,508 | \$20,627 | \$784 |
| BN 114 | 363 | \$83,125 | \$20,781 | \$790 |
| BN 151 & 153 | 369 | \$83,461 | \$20,865 | \$793 |
| BN 149 | 370 | \$83,518 | \$20,879 | \$793 |
| BN 150 | 372 | \$83,630 | \$20,907 | \$795 |
| BN 152 | 374 | \$83,742 | \$20,935 | \$796 |
| BN 106 - 120 | 375 | \$83,798 | \$20,950 | \$796 |
| BN 154 | 376 | \$83,854 | \$20,964 | \$797 |
| BN 113 | 380.8 | \$84,123 | \$21,031 | \$799 |
| BN 137 | 383.5 | \$84,275 | \$21,069 | \$801 |
| BN 138 | 383.7 | \$84,286 | \$21,072 | \$801 |
| BN 136 | 384.9 | \$84,353 | \$21,088 | \$801 |
| BN 135 | 385 | \$84,359 | \$21,090 | \$801 |
| BN 134 | 386 | \$84,415 | \$21,104 | \$802 |
| BN 133 | 387 | \$84,471 | \$21,118 | \$803 |
| BN 132 | 387.9 | \$84,522 | \$21,130 | \$803 |
| BN 128 | 403.8 | \$85,414 | \$21,353 | \$811 |
| BN 127 | 413 | \$85,930 | \$21,482 | \$816 |
| BN 126 | 415 | \$86,042 | \$21,511 | \$817 |
| BN 102 | 430 | \$86,884 | \$21,721 | \$825 |
| BN 103 | 435 | \$87,164 | \$21,791 | \$828 |
| BN 105 | 440 | \$87,445 | \$21,861 | \$831 |
| BN 123 | 500 | \$90,811 | \$22,703 | \$863 |
| BN 104 | 514 | \$91,596 | \$22,899 | \$870 |

**2 BEDROOM
APARTMENT 95 SQM**

BETTY



FLOOR PLAN

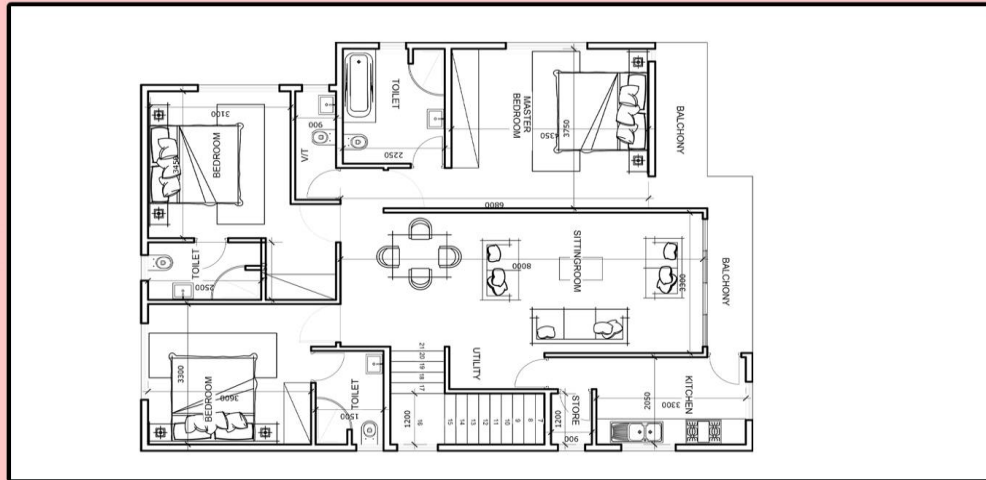
- BEDROOMS: 2
- BATHROOMS: 2 AND 1 GUESTS WASH ROOM
- LIVING ROOM : 1
- DINNING : 1
- KITCHEN: 1 PARTLY FITTED

PRICE LIST

| 2 Bed Betty - 95m2 Apartment | | | | |
|------------------------------|-----------------|-------------|----------|------------------------|
| Plot Number | Plot Size (sqm) | Price (USD) | 25% | Est. Monthly Repayment |
| BN 148 | 178.5 | \$54,470 | \$13,618 | \$518 |
| BN 145 | 180.8 | \$54,523 | \$13,631 | \$518 |
| BN 157 | 187 | \$54,665 | \$13,666 | \$519 |
| BN 146 /147 | 187.5 | \$54,676 | \$13,669 | \$519 |
| BN 143 | 190.5 | \$54,745 | \$13,686 | \$520 |
| BN 144 | 192 | \$54,779 | \$13,695 | \$520 |
| BN 158 | 202 | \$55,008 | \$13,752 | \$523 |
| BN 156 | 265 | \$56,449 | \$14,112 | \$536 |
| BN 122 | 279 | \$56,770 | \$14,192 | \$539 |
| BN 155 | 292 | \$57,067 | \$14,267 | \$542 |
| BN 100 | 312 | \$57,525 | \$14,381 | \$547 |
| BN 139 - 142 | 312.5 | \$57,536 | \$14,384 | \$547 |
| BN 101 | 324 | \$57,799 | \$14,450 | \$549 |
| BN 124 & 125 | 332 | \$57,982 | \$14,496 | \$551 |
| BN 130 & 131 | 342 | \$58,211 | \$14,553 | \$553 |
| BN 121 | 344.8 | \$58,275 | \$14,569 | \$554 |
| BN 112 | 346 | \$58,303 | \$14,576 | \$554 |
| BN 129 | 352 | \$58,440 | \$14,610 | \$555 |
| BN 114 | 363 | \$58,691 | \$14,673 | \$558 |
| BN 151 & 153 | 369 | \$58,829 | \$14,707 | \$559 |
| BN 149 | 370 | \$58,852 | \$14,713 | \$559 |
| BN 150 | 372 | \$58,897 | \$14,724 | \$560 |
| BN 152 | 374 | \$58,943 | \$14,736 | \$560 |
| BN 106 - 120 | 375 | \$58,966 | \$14,742 | \$560 |
| BN 154 | 376 | \$58,989 | \$14,747 | \$560 |
| BN 113 | 380.8 | \$59,099 | \$14,775 | \$561 |
| BN 137 | 383.5 | \$59,161 | \$14,790 | \$562 |
| BN 138 | 383.7 | \$59,165 | \$14,791 | \$562 |
| BN 136 | 384.9 | \$59,193 | \$14,798 | \$562 |
| BN 135 | 385 | \$59,195 | \$14,799 | \$562 |
| BN 134 | 386 | \$59,218 | \$14,804 | \$563 |
| BN 133 | 387 | \$59,241 | \$14,810 | \$563 |
| BN 132 | 387.9 | \$59,261 | \$14,815 | \$563 |
| BN 128 | 403.8 | \$59,625 | \$14,906 | \$566 |
| BN 127 | 413 | \$59,835 | \$14,959 | \$568 |
| BN 126 | 415 | \$59,881 | \$14,970 | \$569 |
| BN 102 | 430 | \$60,224 | \$15,056 | \$572 |
| BN 103 | 435 | \$60,339 | \$15,085 | \$573 |
| BN 105 | 440 | \$60,453 | \$15,113 | \$574 |
| BN 123 | 500 | \$61,826 | \$15,457 | \$587 |
| BN 104 | 514 | \$62,146 | \$15,537 | \$590 |

3 BEDROOM APARTMENT 131 SQM

BETTY



FLOOR PLAN

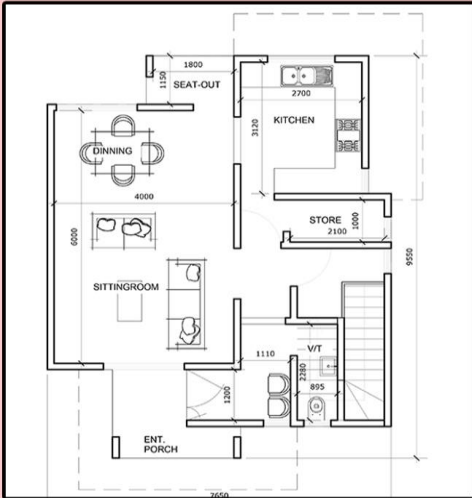
- BEDROOMS: 3
- BATHROOMS: 3 AND 1 GUESTS WASH ROOM
- LIVING ROOM : 1
- DINNING : 1
- KITCHEN: 1 PARTLY FITTED

PRICE LIST

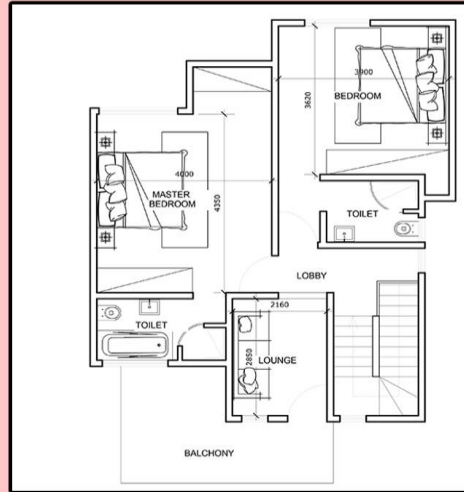
| | | 3 Bed Betty - 131m2 Apartment | | |
|--------------|-----------------|-------------------------------|----------|------------------------|
| Plot Number | Plot Size (sqm) | Price (USD) | 25% | Est. Monthly Repayment |
| BN 148 | 178.5 | \$73,211 | \$18,303 | \$696 |
| BN 145 | 180.8 | \$73,264 | \$18,316 | \$696 |
| BN 157 | 187 | \$73,406 | \$18,351 | \$697 |
| BN 146 /147 | 187.5 | \$73,417 | \$18,354 | \$698 |
| BN 143 | 190.5 | \$73,486 | \$18,371 | \$698 |
| BN 144 | 192 | \$73,520 | \$18,380 | \$698 |
| BN 158 | 202 | \$73,749 | \$18,437 | \$701 |
| BN 156 | 265 | \$75,190 | \$18,798 | \$714 |
| BN 122 | 279 | \$75,511 | \$18,878 | \$717 |
| BN 155 | 292 | \$75,808 | \$18,952 | \$720 |
| BN 100 | 312 | \$76,266 | \$19,066 | \$725 |
| BN 139 - 142 | 312.5 | \$76,277 | \$19,069 | \$725 |
| BN 101 | 324 | \$76,540 | \$19,135 | \$727 |
| BN 124 & 125 | 332 | \$76,723 | \$19,181 | \$729 |
| BN 130 & 131 | 342 | \$76,952 | \$19,238 | \$731 |
| BN 121 | 344.8 | \$77,016 | \$19,254 | \$732 |
| BN 112 | 346 | \$77,044 | \$19,261 | \$732 |
| BN 129 | 352 | \$77,181 | \$19,295 | \$733 |
| BN 114 | 363 | \$77,433 | \$19,358 | \$736 |
| BN 151 & 153 | 369 | \$77,570 | \$19,392 | \$737 |
| BN 149 | 370 | \$77,593 | \$19,398 | \$737 |
| BN 150 | 372 | \$77,639 | \$19,410 | \$738 |
| BN 152 | 374 | \$77,684 | \$19,421 | \$738 |
| BN 106 - 120 | 375 | \$77,707 | \$19,427 | \$738 |
| BN 154 | 376 | \$77,730 | \$19,433 | \$738 |
| BN 113 | 380.8 | \$77,840 | \$19,460 | \$740 |
| BN 137 | 383.5 | \$77,902 | \$19,475 | \$740 |
| BN 138 | 383.7 | \$77,906 | \$19,477 | \$740 |
| BN 136 | 384.9 | \$77,934 | \$19,483 | \$740 |
| BN 135 | 385 | \$77,936 | \$19,484 | \$740 |
| BN 134 | 386 | \$77,959 | \$19,490 | \$741 |
| BN 133 | 387 | \$77,982 | \$19,495 | \$741 |
| BN 132 | 387.9 | \$78,002 | \$19,501 | \$741 |
| BN 128 | 403.8 | \$78,366 | \$19,592 | \$745 |
| BN 127 | 413 | \$78,577 | \$19,644 | \$747 |
| BN 126 | 415 | \$78,622 | \$19,656 | \$747 |
| BN 102 | 430 | \$78,966 | \$19,741 | \$750 |
| BN 103 | 435 | \$79,080 | \$19,770 | \$751 |
| BN 105 | 440 | \$79,194 | \$19,799 | \$752 |
| BN 123 | 500 | \$80,567 | \$20,142 | \$765 |
| BN 104 | 514 | \$80,888 | \$20,222 | \$768 |

2 BEDROOM STOREY 141 SQM

AMIE



GROUND FLOOR



TOP FLOOR

- BEDROOMS: 2
- BATHROOMS: 3
- LIVING ROOM : 1
- DINNING: 1
- KITCHEN: 1 PARTLY FITTED

PRICE LIST

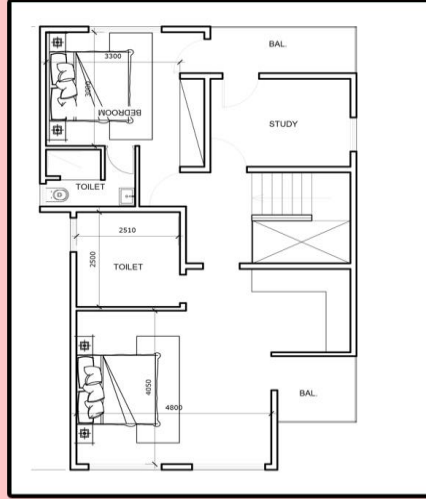
| | | 2 Bed Amie - 141m2 Storey | | |
|--------------|-----------|---------------------------|----------|------------------------|
| | PLOT SIZE | Price (USD) | 25% | Est. Monthly Repayment |
| BN 148 | 178.5 | \$100,860 | \$25,215 | \$958 |
| BN 145 | 180.8 | \$100,989 | \$25,247 | \$959 |
| BN 157 | 187 | \$101,337 | \$25,334 | \$963 |
| BN 146 & 147 | 187.5 | \$101,365 | \$25,341 | \$963 |
| BN 143 | 190.5 | \$101,533 | \$25,383 | \$965 |
| BN 144 | 192 | \$101,617 | \$25,404 | \$965 |
| BN 158 | 202 | \$102,178 | \$25,545 | \$971 |
| BN 156 | 265 | \$105,712 | \$26,428 | \$1,004 |
| BN 122 | 279 | \$106,498 | \$26,624 | \$1,012 |
| BN 155 | 292 | \$107,227 | \$26,807 | \$1,019 |
| BN 100 | 312 | \$108,349 | \$27,087 | \$1,029 |
| BN 139 - 142 | 312.5 | \$108,377 | \$27,094 | \$1,030 |
| BN 101 | 324 | \$109,022 | \$27,256 | \$1,036 |
| BN 124 & 125 | 332 | \$109,471 | \$27,368 | \$1,040 |
| BN 130 & 131 | 342 | \$110,032 | \$27,508 | \$1,045 |
| BN 121 | 344.8 | \$110,189 | \$27,547 | \$1,047 |
| BN 112 | 346 | \$110,256 | \$27,564 | \$1,048 |
| BN 129 | 352 | \$110,593 | \$27,648 | \$1,051 |
| BN 114 | 363 | \$111,210 | \$27,803 | \$1,057 |
| BN 151 & 153 | 369 | \$111,547 | \$27,887 | \$1,060 |
| BN 149 | 370 | \$111,603 | \$27,901 | \$1,060 |
| BN 150 | 372 | \$111,715 | \$27,929 | \$1,061 |
| BN 152 | 374 | \$111,827 | \$27,957 | \$1,062 |
| BN 106 - 111 | 375 | \$111,883 | \$27,971 | \$1,063 |
| BN 115 - 120 | 375 | \$111,883 | \$27,971 | \$1,063 |
| BN 154 | 376 | \$111,939 | \$27,985 | \$1,064 |
| BN 113 | 380.8 | \$112,209 | \$28,052 | \$1,066 |
| BN 137 | 383.5 | \$112,360 | \$28,090 | \$1,067 |
| BN 138 | 383.7 | \$112,371 | \$28,093 | \$1,068 |
| BN 136 | 384.9 | \$112,439 | \$28,110 | \$1,068 |
| BN 135 | 385 | \$112,444 | \$28,111 | \$1,068 |
| BN 134 | 386 | \$112,500 | \$28,125 | \$1,069 |
| BN 133 | 387 | \$112,557 | \$28,139 | \$1,069 |
| BN 132 | 387.9 | \$112,607 | \$28,152 | \$1,070 |
| BN 128 | 403.8 | \$113,499 | \$28,375 | \$1,078 |
| BN 127 | 413 | \$114,015 | \$28,504 | \$1,083 |
| BN 126 | 415 | \$114,127 | \$28,532 | \$1,084 |
| BN 102 | 430 | \$114,969 | \$28,742 | \$1,092 |
| BN 103 | 435 | \$115,249 | \$28,812 | \$1,095 |
| BN 105 | 440 | \$115,530 | \$28,882 | \$1,098 |
| BN 123 | 500 | \$118,896 | \$29,724 | \$1,130 |
| BN 104 | 514 | \$119,681 | \$29,920 | \$1,137 |

3 BEDROOM STOREY 166 SQM

BINTA



GROUND FLOOR



TOP FLOOR

- BEDROOMS: 3
- BATHROOMS: 3 AND 1 GUESTS WASH ROOM
- LIVING ROOM : 1
- DINNING : 1
- KITCHEN: 1 PARTLY FITTED

PRICE LIST

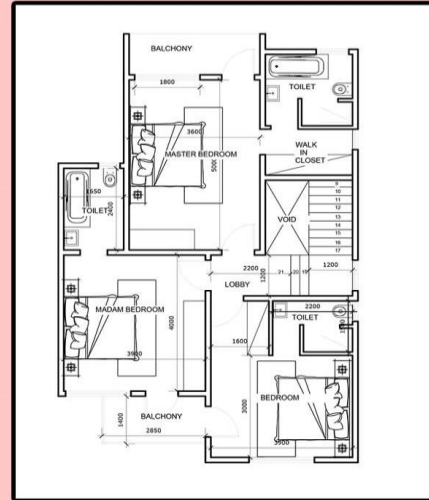
| | | 3 Bed Binta - 166m2 Storey | | |
|--------------|-----------|----------------------------|----------|------------------------|
| | PLOT SIZE | Price (USD) | 25% | Est. Monthly Repayment |
| BN 148 | 178.5 | \$116,305 | \$29,076 | \$1,105 |
| BN 145 | 180.8 | \$116,434 | \$29,109 | \$1,106 |
| BN 157 | 187 | \$116,782 | \$29,196 | \$1,110 |
| BN 146 & 147 | 187.5 | \$116,810 | \$29,203 | \$1,110 |
| BN 143 | 190.5 | \$116,978 | \$29,245 | \$1,111 |
| BN 144 | 192 | \$117,063 | \$29,266 | \$1,112 |
| BN 158 | 202 | \$117,624 | \$29,406 | \$1,118 |
| BN 156 | 265 | \$121,158 | \$30,289 | \$1,151 |
| BN 122 | 279 | \$121,943 | \$30,486 | \$1,159 |
| BN 155 | 292 | \$122,673 | \$30,668 | \$1,165 |
| BN 100 | 312 | \$123,795 | \$30,949 | \$1,176 |
| BN 139 - 142 | 312.5 | \$123,823 | \$30,956 | \$1,176 |
| BN 101 | 324 | \$124,468 | \$31,117 | \$1,183 |
| BN 124 & 125 | 332 | \$124,917 | \$31,229 | \$1,187 |
| BN 130 & 131 | 342 | \$125,478 | \$31,369 | \$1,192 |
| BN 121 | 344.8 | \$125,635 | \$31,409 | \$1,194 |
| BN 112 | 346 | \$125,702 | \$31,425 | \$1,194 |
| BN 129 | 352 | \$126,039 | \$31,510 | \$1,197 |
| BN 114 | 363 | \$126,656 | \$31,664 | \$1,203 |
| BN 151 & 153 | 369 | \$126,992 | \$31,748 | \$1,207 |
| BN 149 | 370 | \$127,048 | \$31,762 | \$1,207 |
| BN 150 | 372 | \$127,161 | \$31,790 | \$1,208 |
| BN 152 | 374 | \$127,273 | \$31,818 | \$1,209 |
| BN 106 - 111 | 375 | \$127,329 | \$31,832 | \$1,210 |
| BN 115 - 120 | 375 | \$127,329 | \$31,832 | \$1,210 |
| BN 154 | 376 | \$127,385 | \$31,846 | \$1,210 |
| BN 113 | 380.8 | \$127,654 | \$31,914 | \$1,213 |
| BN 137 | 383.5 | \$127,806 | \$31,951 | \$1,214 |
| BN 138 | 383.7 | \$127,817 | \$31,954 | \$1,214 |
| BN 136 | 384.9 | \$127,884 | \$31,971 | \$1,215 |
| BN 135 | 385 | \$127,890 | \$31,972 | \$1,215 |
| BN 134 | 386 | \$127,946 | \$31,986 | \$1,216 |
| BN 133 | 387 | \$128,002 | \$32,001 | \$1,216 |
| BN 132 | 387.9 | \$128,053 | \$32,013 | \$1,217 |
| BN 128 | 403.8 | \$128,945 | \$32,236 | \$1,225 |
| BN 127 | 413 | \$129,461 | \$32,365 | \$1,230 |
| BN 126 | 415 | \$129,573 | \$32,393 | \$1,231 |
| BN 102 | 430 | \$130,414 | \$32,604 | \$1,239 |
| BN 103 | 435 | \$130,695 | \$32,674 | \$1,242 |
| BN 105 | 440 | \$130,975 | \$32,744 | \$1,244 |
| BN 123 | 500 | \$134,341 | \$33,585 | \$1,276 |
| BN 104 | 514 | \$135,127 | \$33,782 | \$1,284 |

**4 BEDROOM
STORY 176 SQM**

NYIMA



GROUND FLOOR



TOP FLOOR

- **BEDROOMS: 4**
- **MASTER BEDROOM WITH WALK-IN CLOSET**
- **BATHROOMS: 4 AND 1 GUESTS WASH ROOM**
- **LIVING ROOM : 1 AND DINNING : 1**
- **KITCHEN : 1 PARTLY FITTED**

PRICE LIST

| | | 4 Bed Nyima - 176m2 Storey | | |
|--------------|-----------|----------------------------|----------|------------------------|
| | PLOT SIZE | Price (USD) | 25% | Est. Monthly Repayment |
| BN 148 | 178.5 | \$123,240 | \$30,810 | \$1,171 |
| BN 145 | 180.8 | \$123,369 | \$30,842 | \$1,172 |
| BN 157 | 187 | \$123,717 | \$30,929 | \$1,175 |
| BN 146 & 147 | 187.5 | \$123,745 | \$30,936 | \$1,176 |
| BN 143 | 190.5 | \$123,913 | \$30,978 | \$1,177 |
| BN 144 | 192 | \$123,997 | \$30,999 | \$1,178 |
| BN 158 | 202 | \$124,558 | \$31,140 | \$1,183 |
| BN 156 | 265 | \$128,093 | \$32,023 | \$1,217 |
| BN 122 | 279 | \$128,878 | \$32,220 | \$1,224 |
| BN 155 | 292 | \$129,607 | \$32,402 | \$1,231 |
| BN 100 | 312 | \$130,729 | \$32,682 | \$1,242 |
| BN 139 - 142 | 312.5 | \$130,757 | \$32,689 | \$1,242 |
| BN 101 | 324 | \$131,403 | \$32,851 | \$1,248 |
| BN 124 & 125 | 332 | \$137,349 | \$34,337 | \$1,305 |
| BN 130 & 131 | 342 | \$136,508 | \$34,127 | \$1,297 |
| BN 121 | 344.8 | \$132,569 | \$33,142 | \$1,260 |
| BN 112 | 346 | \$132,637 | \$33,159 | \$1,260 |
| BN 129 | 352 | \$132,973 | \$33,243 | \$1,263 |
| BN 114 | 363 | \$133,590 | \$33,398 | \$1,269 |
| BN 151 & 153 | 369 | \$133,927 | \$33,482 | \$1,272 |
| BN 149 | 370 | \$133,983 | \$33,496 | \$1,273 |
| BN 150 | 372 | \$134,095 | \$33,524 | \$1,274 |
| BN 152 | 374 | \$134,208 | \$33,552 | \$1,275 |
| BN 106 - 111 | 375 | \$134,264 | \$33,566 | \$1,276 |
| BN 115 - 120 | 375 | \$134,264 | \$33,566 | \$1,276 |
| BN 154 | 376 | \$134,320 | \$33,580 | \$1,276 |
| BN 113 | 380.8 | \$134,589 | \$33,647 | \$1,279 |
| BN 137 | 383.5 | \$134,740 | \$33,685 | \$1,280 |
| BN 138 | 383.7 | \$134,752 | \$33,688 | \$1,280 |
| BN 136 | 384.9 | \$134,819 | \$33,705 | \$1,281 |
| BN 135 | 385 | \$134,825 | \$33,706 | \$1,281 |
| BN 134 | 386 | \$134,881 | \$33,720 | \$1,281 |
| BN 133 | 387 | \$134,937 | \$33,734 | \$1,282 |
| BN 132 | 387.9 | \$134,987 | \$33,747 | \$1,282 |
| BN 128 | 403.8 | \$135,879 | \$33,970 | \$1,291 |
| BN 127 | 413 | \$136,395 | \$34,099 | \$1,296 |
| BN 126 | 415 | \$136,508 | \$34,127 | \$1,297 |
| BN 102 | 430 | \$137,349 | \$34,337 | \$1,305 |
| BN 103 | 435 | \$137,630 | \$34,407 | \$1,308 |
| BN 105 | 440 | \$137,910 | \$34,478 | \$1,310 |
| BN 123 | 500 | \$141,276 | \$35,319 | \$1,342 |
| BN 104 | 514 | \$142,062 | \$35,515 | \$1,350 |

CONTACT US



THE GAMBIA

Email: info@tafafricaglobal.com

Tel: +220 776 - 2333

Tel: +220 376 - 2333

Address: 17-19 Kaira Avenue, Madiba Mall,
Brufut Gardens Estate, P.O. Box 121, The
Gambia

NIGERIA

Email: info@rivtaf.com

Tel: +2348058094194

Address: RIVTAF Golf Estate, End of Peter
Odili Road, Trans Amadi, Port Harcourt,
Rivers State, Nigeria

www.tafafricaglobal.com