



# Frozen Seafood





**TUNA SAKU AAA**  
BLUEFIN  
11 LB/2 BX/CS



**TUNA SAKU AAA**  
BIG EYE  
10-11 LB/2 BX/CS



**TUNA SAKU AAA**  
YELLOWFIN  
10-11 LB/2 BX/CS



**TUNA SAKU O TORO**  
BLUEFIN SOUTHERN  
11 LB/2 BX/CS



**TUNA LOIN**  
YELLOWFIN  
22-40 LB/CS



**TUNA STRIP**  
YELLOWFIN  
11 LB/2 BX/CS



**TUNA GROUND**  
YELLOWFIN  
10-11 LB/2 BX/CS



**TUNA CUBE**  
22 LB/CS



**ESCOLAR**  
KOREA  
2.2 LB/10 PK/CS



**ALBACORE TUNA**  
1-2 LB/PC  
11.02 LB/BX



**SALMON FILLET**  
SUSHI OR KITCHEN SKIN ON  
4-5 LB/PC



**TRIM D SALMON FILLET**  
3-5 LB/PC/33.08 LB/CS



**TRIM E SALMON FILLET**  
3-5 LB/PC/22.05 LB/CS



**SMOKED SALMON**  
SALMON BAY  
4-7.5 LB/PC



**SMOKED SALMON**  
FJORD KING/LIBERTY/MCKNIGHT  
4-5 LB/PC



**HAMACHI LOIN**  
1-2 LB/PC  
11 LB/2 BX/CS



**KAN SABA**  
NORWAY  
22 LB & 44 LB/CS



**HAMACHI KAMA**  
22 LB/CS



**HAMACHI FILLET**  
4.5-7.5 LB/PC



**SHIME/KOMBU SABA**  
JAPAN  
125 G/20 PC/CS



**PACIFIC SAURY**  
22 LB



**WAHOO LOIN**  
HILO  
20 LB/CS



**ANAGO IKEJIMI**  
1 PK/4.4 LB/10 PK/CS



**NI ANAGO**  
COOKED CONGER EEL (9-11 PC)  
2.2 LB/5 PK/CS



**UNAGI EEL**  
9, 10, 11, 12 & 14 OZ  
11 LB/2 BX/CS



**CHILEAN SEA BASS**  
10-15 LB/PC



**BLACK COD**  
4-7 LB



**MASHI MASHI IZUMIDAI FILLET**  
9-11 OZ /11 OZ & UP  
22 LB/CS



**IZUMIDAI FILLET**  
11 OZ & UP  
22 LB/CS



**BREADED OYSTER**  
TOKAI  
20PC/8 PK/CS



**BREADED OYSTER**  
2 LB/10 PK/CS



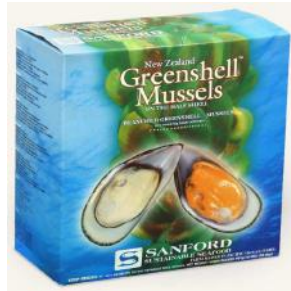
**HOKKIGAI**  
CLEAR WATER  
2.2 LB/PK



**BLUE CONCH**  
5 LB/10 BX/CS



**ANKIMO**  
220 G/PK



**MUSSEL**  
NEW ZEALAND  
2 LB/12 PK/CS



**CRAWFISH TAIL MEAT**  
1 LB/24 PC/CS



**LOBSTER TAIL**  
5 OZ WARM WATER  
10 LB/CS



**SUSHI SCALLOP S, 2S, 3S**  
JAPAN HOKKAIDO  
2.2LB/10 PK/CS



**SCALLOP IQF 10/20**  
5LB/ 6BAGS/ CS



**SCALLOP PROCESSED**  
80/100  
5 LB/6 BG/CS



**SOFT SHELL CRAB**  
WHALE- 9 PC    PRIME-12 PC  
JUMBO-12 PC    HOTEL-18 PC  
MEDIUM- 24 PC



**REAL SNOW CRAB MEAT**  
5 LB/CS



**REAL SNOW CRAB**  
ALL LEG MEAT  
5 LB/CS



**KING CRAB LEGS**  
22 LB/CS



**SHREDDED IMIT CRAB MEAT**  
LOUIS KEMP  
2.5 LB/12 PK/CS



**SHREDDED IMIT CRAB MEAT**  
TETSUJIN  
2.5 LB/12 PK/CS



**SHREDDED IMIT CRAB MEAT**  
ASIAN STAR  
2.5 LB/12 PK/CS



**NARUTOMAKI**  
YAMASA  
6 OZ/24 PK/CS



**KAMABOKO RED**  
YAMASA  
6 OZ/24 PK/CS



**FISH CAKE**  
2.2 LB/10 PK/CS



**KANI STICK**  
TETSUJIN 7"  
2.2 LB/10 PK/CS



**KANI STICK**  
ASIAN STAR 7"  
2.2 LB/10 PK/CS



**KANI STICK**  
TAKUME  
1.1 LB/20 PK/CS



**KANI STICK**  
OSAKI  
1.1 LB/20 PK/CS



**KANI STICK**  
ICHIBAN  
1.1 LB/20 PK/CS



**KANI STICK**  
OCEAN CROWN  
1.1 LB/20 PK/CS



**KANI STICK**  
TETSUJIN  
1.1 LB/20 PK/CS



**KANI STICK**  
OMAKASE  
1.1 LB/20 PK/CS



**KANI STICK**  
SAMHO  
22 LB/CS



**KANI STICK**  
SAMHO PREMIUM  
22 LB/CS



**TAKO**  
LEGS ONLY  
2.2 LB/PK



**WHOLE TAKO**  
PER LB



**SURUME IKA**  
300-500/22-44 LB/CS



**CALAMARI STEAK**  
5 LB/PK



**IKA SQUID TUBE**  
U5 IQF  
22 LB/CS



**SURUME IKA WHOLE SQUID**  
PRECUT/PRECOOKED  
17.6LB/CS



**MONGO IKA**  
1.1 LB/PK



**IKA GESO KARAAGE**  
2.2 LB/4 PK/CS



**IKA SQUID RING**  
5/8  
1 LB/20 PK/CS



**TAKOYAKI**  
540 G/10 BG/CS



**TOBIKO RED**  
MASHI MASHI  
1.1 LB/12 PK/CS



**TOBIKO WASABI**  
MASHI MASHI  
1.1 LB/12 PK/CS



**TOBIKO BLACK**  
MASHI MASHI  
1.1 LB/12 PK/CS



**TOBIKO YELLOW**  
MASHI MASHI  
1.1 LB/12 PK/CS



**TOBIKO WASABI**  
AZUMA  
1.1 LB/24 PK/CS



**TOBIKO BLACK**  
AZUMA  
1.1 LB/24 PK/CS



**TOBIKO YUZU**  
AZUMA  
1.1 LB/24 PK/CS



**TOBIKO RED**  
AZUMA  
1.1 LB/24 PK/CS



**TOBIKO YUZU**  
TETSUJIN  
1.1 LB/12 PK/CS



**MASAGO**  
AZUMA  
1.1 LB/24 PK/CS



**MASAGO**  
AZUMA  
8.8 LB/2 TUB/BDL



**MASAGO**  
MASHI MASHI  
4.4 LB/4 TUB/CS



**MASAGO HABANERO**  
AZUMA  
1.1 LB/24 PK/CS



**IKURA CHUM**  
IXP  
2.2 LB/12 PK/CS



**IKURA CHUM**  
SSS  
2.2 LB/12 PK/CS



**BOTAN EBI**  
L, XL, XJ  
2.2 LB/12 PK/CS



**SUSHI EBI**  
3L, 4L, 5L  
30 PC/20 PK/CS



**BROKEN SUSHI EBI**  
GOLDEN SAND  
200 G/30 PK/CS



**NOBASHI EBI**  
21/25, 26/30  
20, 25 PC/30 PK/CS



**NOBASHI EBI**  
21/25, 26/30  
20 PC/20 PK/CS



**WHITE SHRIMP SHELL ON**  
16/20, 21/25, 26/30  
4 LB/6 OR 10 BX/CS



**COOKED SALAD SHRIMP**  
100/300  
1 LB/10 PK/CS



**WHITE SHRIMP P&D TAIL ON**  
21/25  
2 LB/5 BG/CS



**WHITE SHRIMP P&D TAIL OFF**  
21/25  
2 LB/5 BG/CS



**SHRIMP TEMPURA**  
TEZUKURI 21/25  
135 PC/CS



**SHRIMP TEMPURA**  
MYDO/SELECT 22/23  
135 PC/CS

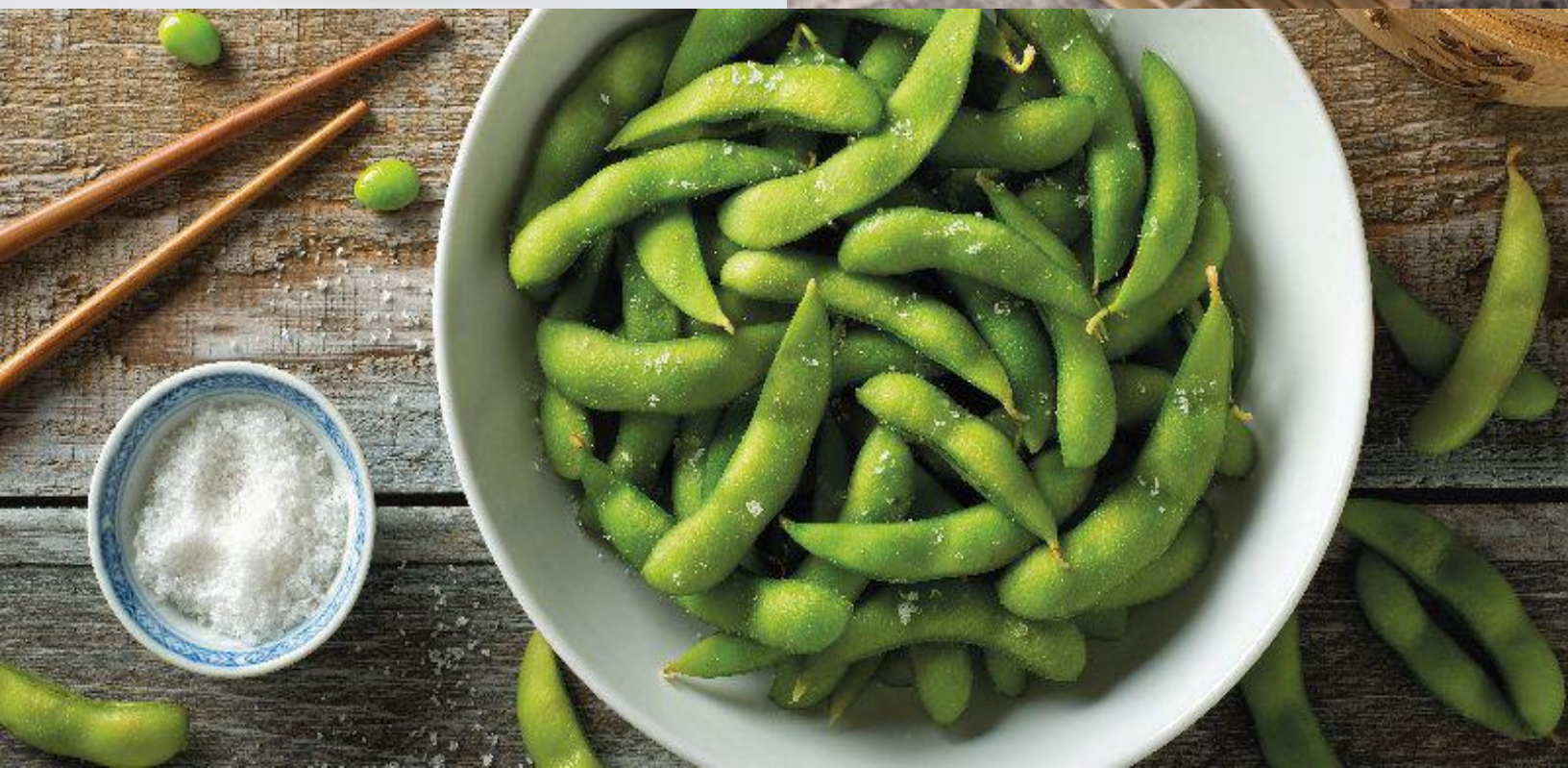


**PANKO BREADED SHRIMP**  
CRANE BAY 13/15  
5 PC/20 PK/CS



**MENBOSHA**  
AZUMA SHRIMP TOAST  
20 PC/12 PK/CS

# Frozen Vegetables & Salads





**EDAMAME**  
400 G/20 PK/CS



**SHELLED EDAMAME**  
1 LB/20, 24 PK/CS



**BAMBOO LEAF**  
100 PC/PK



**HIYASHI WAKAME**  
MARINE FOOD/JAPAN  
4.4 LB/4 TUB/BDL



**HIYASHI WAKAME**  
MASHI MASHI/KOREA  
4.4 LB/4 TUB/BDL



**CHUKA IDAKO**  
TETSUJIN  
4.4 LB/4 TUB/BDL



**CRAWFISH/LOBSTER**  
**SALAD**  
1.43 LB/18PK/CS



**IKA SANSAI**  
JAPAN  
4.4 LB/4 TUB/BDL



**CHUKA IDAKO**  
AZUMA  
2.2 LB/8 BG/CS



**WASABI TAKO SALAD**  
2.2 LB/12 PK/CS



**KIZAMI WASABI**  
10 PC/BG



**WASABI**  
10 PC/BG



# Frozen Noodles & Gyoza





**SANUKI UDON**  
KOREA  
5 PC/8 PK/CS



**NAMA RAMEN**  
WAVY  
5 OZ/40 OR 50 PC/CS



**NAMA RAMEN**  
STRAIGHT  
5 OZ/40 OR 50 PC/CS



**SOKUSEKI RAMEN**  
#22 CURL  
5 PC/8 PK/CS



**SOBA**  
MEIJIN  
31.04 OZ/8 PK/CS



**YAKI SOBA**  
MARUCHAN'S  
17 OZ/10 PK/CS



**YAKI SOBA**  
SUN 22-W  
4LB/7 PK/CS



**WONTON SKIN**  
12 OZ/12 PK/CS



**GYOZA SKIN**  
10 OZ/12 PK/CS



**SHINWA GYOZA SKIN**  
50 PC/30 PK/CS



**BAO BUN**  
CHI MEI  
10 PC/20 PK/CS



**SPRING ROLL SHELL**  
WEI CHUAN  
25 PC/40 PK/CS



**PORK GYOZA**  
O'TASTY  
32 OZ/8 BG/CS



**CHICKEN GYOZA**  
O'TASTY  
32 OZ/8 BG/CS



**SHRIMP GYOZA**  
PASSPORT  
1.89 LB/4 BG/CS



**PORK GYOZA**  
PASSPORT  
1.89 LB/4 BG/CS



**PORK GYOZA TRAY**  
PASSPORT  
12 PC/16 TRAY/CS



**CHICKEN GYOZA**  
PASSPORT  
1.89 LB/4 BG/CS



**PORK GYOZA POTSTICKER**  
CJ  
2 LB/8 PK/CS



**VEGETABLE PREM GYOZA**  
PASSPORT  
12 PC/16 TRAY/CS



**GREEN VEGETABLE**  
PASSPORT  
12 PC/16 TRAY/CS



**JAPCHAE GYOZA**  
CJ BIBIGO  
1.5 LB/12 BG/CS



**BEEF & VEG GYOZA**  
CJ BIBIGO  
1.5 LB/12 BG/CS



**SPICY PORK & VEG**  
CJ BIBIGO  
1.5 LB/12 BG/CS



**PORK & CHICKEN GYOZA**  
AJINOMOTO  
240 G/20 PK/CS



**BEEF GYOZA**  
DL  
2.25 LB/4 BG/CS



**VEGETABLE CROQUETTE**  
100 PC/2 BX/BDL



**PORK SHUMAI WASABI L**  
JFC  
1.69 LB/4 BG/CS



**PORK SHUMAI WASABI L**  
PASSPORT  
27 PC/4 BG/CS



**PORK SHUMAI L**  
PASSPORT  
1.69 LB/4 BG/CS



**SHRIMP SHUMAI TRAY**  
PASSPORT  
15 PC/16 TRAY/CS



**SHRIMP SHUMAI 50 PC**  
AJINOMOTO  
1.65 LB/6 BG/CS



**SHRIMP SHUMAI L**  
AJINOMOTO  
28 PC/4 BG/CS



**VEGETABLE SPRING ROLL**  
GREENLAND  
20 PC/10PK/CS



**PORK EGG ROLL**  
BAILY  
12 PC/10 PK/BX



**CURRY BUN**  
AZUMA  
10 PC/10 PK/CS



# Frozen Desserts





**MOCHI ICE CREAM**

VANILLA, RED BEAN, MANGO, GREEN TEA, STRAWBERRY, BLACK SESAME, CHOCOLATE  
6 PC/12 PK/CS



**ICE CREAM**  
GREEN TEA  
1.5 GAL OR 2.5 GAL



**ICE CREAM**  
VANILLA  
1.5 GAL



**ICE CREAM**  
RED BEAN  
1.5 GAL



**ICE CREAM**  
MANGO SHERBET  
1.5 GAL



**ICE CREAM**  
YUZU SHERBET  
1.5 GAL



**ICE CREAM**  
LYCHEE SHERBET  
1.5 GAL



**CREPE CAKE**  
MATCHA  
12 PC/10 PK/CS



**CREPE CAKE**  
STRAWBERRY  
12 PC/10 PK/CS



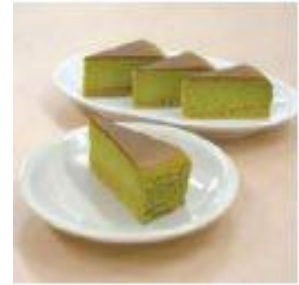
**MACARON**  
FUSION FLAVOR  
24 PC/8 PK/CS



**MINI CHURROS**  
CHOCOLATE  
20 PC/ 20 PK/CS



**CHEESE CAKE**  
YUZU  
480 G/12 BX/CS



**CHEESE CAKE**  
GREEN TEA  
480 G/12 BX/CS



**TAIYAKI**  
RED BEAN WAFFLE  
50 PC/5 BG/CS



**MINI SOUFFLE CAKE**  
CHEESE  
12 PC/6 PK/CS



**MINI SOUFFLE CAKE**  
CHOCOLATE  
12 PC/6 PK/CS

# Frozen Misc





**BEEF BULGOGI MEAT**  
7-12 LB/PKG/50 LB/CS



**PORK BULGOGI MEAT**  
7-12 LB/PKG/50 LB/CS



**PORK CHA SHU**  
PER LB



**KARAAGE CHICKEN**  
DAY LEE  
4 LB/5 BG/CS



**TERIYAKI CHICKEN THIGH**  
FULLY COOKED W/ SAUCE  
PER LB



**ABURA-AGE**  
10.5 OZ/10 PK/CS



**AJITSUKE INARI**  
25.4 OZ/20 PK/CS



**KIM MA RI**  
1.1 LB/24 PK/CS



**TAMAGO**  
AHJIKAN  
1.1 LB/24 PC/CS



**NATTO**  
3/PK