

# NOVEMBER SAVINGS

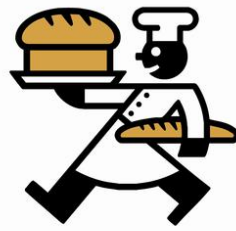
Prices effective November 4 - 23

Due to market conditions, prices and availability are subject to change.



95 Haverhill Rd  
Amesbury, MA 01913  
[www.shaheenbros.com](http://www.shaheenbros.com)

Call your sales  
representative today!  
**978-388-6776**



**TRADITIONAL BREADS**

*Your concept. Our craft.*



**Other soups available:** Steak & Ale • NE Clam Chowder • Lemon Chicken & Orzo • Beef Chili w/ Beans • Creamy Tomato • Teddy's Beef & Bean Chili • Vegetable Chili • Spring Vegetable • Creamy Chicken & Wild Rice • Chicken Tortilla • Wild Mushroom • Extreme Clam Chowder • Roasted Red Pepper & Smoked Gouda • Shrimp & Corn Chowder • Vegetable Beef Stew NE Style • French Onion • Chicken Noodle • Butternut Squash & Apple

### WHITE CHEDDAR MAC & CHEESE

A grown-up version of the ultimate comfort food, made with shell pasta and decadent, creamy white cheddar cheese sauce.

70148 4/4 lb. (Frozen)



### MINESTRONE

This minestrone is made with a flavorful tomato stock, a mixture of beans, pasta and a medley of vegetables all slowly simmered to perfection.

88714 4/4 lb. (Fresh) | 70492 4/4 lb. (Frozen)



### SWEET POTATO & KALE

This unique organic creation combines kale and sweet potatoes, simmered in a hearty stock with kidney beans and select vegetables.

70508 4/4 lb. (Frozen)



### BROCCOLI & CHEDDAR

Everyone's favorite soup made with generous pieces of broccoli, creamy sharp cheddar cheese and a touch of spice.

88710 4/4 lb. (Fresh) | 70518 4/4 lb. (Frozen)



### MAINE LOBSTER BISQUE

A perfect blend of minced sweet lobster meat simmered in rich cream and sherry.

88700 4/4 lb. (Fresh) | 88266 4/4 lb. (Frozen)



### ITALIAN WEDDING

Mini-meatballs married with pieces of tender chicken, Acini de Pepe pasta and spinach in a delicate chicken broth.

88716 4/4 lb. (Fresh) | 88271 4/4 lb. (Frozen)



### CHICKEN & POBLANO

A creamy blend of diced chicken and spicy peppers accented with corn and black beans and finished with a hint of lime.

88738 4/4 lb. (Frozen)



### BEEF & BROCCOLI

Tender beef, broccoli and white rice simmered in a savory stock with carrots, ginger and scallions.

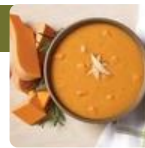
88706 4/4 lb. (Frozen)



### ORGANIC SAVORY HARVEST BISQUE

Sweet butternut squash and carrots are pureed with ginger, nutmeg, and cinnamon and then finished with diced apples, sweet potatoes and a hint of rosemary.

88302 4/4 lb. (Frozen)



### CIABATTA BREAD

A traditional Ciabatta with a wonderful open cell structure and firm crust. Use for sandwiches, salad strips or table bread. Baked

3x7": 63014 80/3.5 oz.

4x4": 63004 80/4 oz.



### GARLIC BREAD STICKS

Prepared with fresh roasted garlic and olive oil that resembles a miniature baguette. Great eye appeal, aroma and flavor. Serve table top or with pasta dishes. Parbaked.

62914 180/2 oz.



### CLASSIC DINNER ROLLS

A roll made with a light sour dough to create a thin flaky outer crust and maintain a moist interior. Perfect for table baskets, sliders and to-go box lunches. Parbaked.

62922 180/1.3 oz.



### ASSORTED DINNER ROLLS

An assortment of French, Wheat, Sourdough, and Onion Dill. This assortment is a favorite for it satisfies everyone's taste buds and has such a multitude of uses. Parbaked

62932 180/1.3 oz.



### HONEY MOUNTAIN BREAD

An eye appealing and flavorful loaf made with honey, molasses and care. Great for table bread or retail sales. Baked.

63008 30/8 oz.



### WHOLE CARAWAY SEEDS

45178 1/1 lb.

### WHOLE CORIANDER

45208 1/7 oz.

### GROUND CUMIN

45218 1/1 lb.

### WHOLE LIGHT FENNEL

45230 1/14 oz.

### MARJORAM LEAVES

45298 1/3.25 oz.

### OREGANO LEAVES

45326 1/2 lb.

### PARSLEY FLAKES

45348 1/5 lb.

### CRACKED PEPPER

45370 1/1 lb.

### PUMPKIN SPICE

45394 1/1 lb.



### ALL NATURAL OYSTER CRACKERS

18440 150/.5 oz.

- Individually Wrapped
- Salty Crunch
- Flaky Texture
- 0.5 oz. portions



### ROAST BEEF - RED LABEL, MEDIUM RARE CKD

Made from 100% fresh domestic top rounds; completely denuded; cap removed; oven cooked; medium rare. One piece cut in half. Two half pieces per case.  
66732 2/9 lb. avg.

### COOKED ROAST BEEF

Made from 100% fresh domestic top rounds; completely denuded; cap removed; oven cooked; medium rare. One piece cut in half. Two half pieces per case.  
66720 1/14 lb. avg.

### HOT ITALIAN ROPE SAUSAGE

67117 1/10 lb.

### HOMESTYLE TURKEY BREAST, CKD

98% fat free; 3-piece breast; true oven roasted flavor and texture; delicately oil browned in vegetable oil to give it a unique home cooked flavor; great texture.  
68854 2/7 lb. avg.

### CORNED BEEF ROUNDS

67664 2/6 lb. avg.

### COOKED PASTRAMI ROUNDS

Made from higher bottom flats, completely trimmed; great natural zesty pastrami flavor, coated with crushed coriander, black pepper and molasses.  
67658 2/7 lb. avg.



### KETCHUP DISPENSER PACK

Give customers the option to enhance your offerings with their favorite ketchup! Made from Heinz's own supply of tomato seeds, only the firmest, ripest, juiciest tomatoes are used to make their ketchup.  
13794 2/1.5 gl. 58.50



### KETCHUP - GLASS BOTTLE

Drizzle Heinz ketchup over hamburgers and hot dogs, and give your customers the classic condiment they crave!  
13840 24/14 oz. 63.50



### CN BREADED BREAST NUGGETS, FC

Made with all breast meat and are easy to prepare in the oven or fryer. They make great appetizers, light lunches, or kids' entrees.  
68656 295/.65 oz.



### NAKED WINGS, UNBREADED, BONE-IN CHICKEN WINGS, FC

Fully cooked unbreaded bone-in chicken wings, marinated for tenderness and flavor.  
67942 1/12 lb.



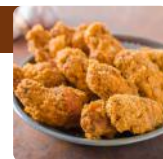
### J-CRUMB CHICKEN TENDER

Whole muscle, chicken breast tenderloins coated with a crunchy, golden brown panko breading with toasted highlights. Ready to cook.  
68012 2/5 lb.



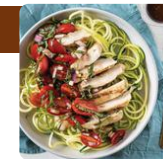
### WING-DITTIES® BREADED WINGS

Marinated for tenderness and flavor and coated with a wildly popular, mild-tasting, lightly crispy breading, Wing-Ditties® are sure to be a big hit!  
67940 2/6 lb.



### CHICKEN STRIPS WITH GRILL MARKS

Whole muscle, fully cooked, marinated, boneless, skinless Sliced Grilled Chicken Breast Fillet with visible grill marks.  
68024 2/5 lb.



### FIERY FINGERS® GLAZED BREAST STRIPS

Fiery Fingers® spicy glazed chicken breast strips are dusted in a fiery, buffalo-style coating that has just the right amount of hot, savory flavor!  
68026 188/.8 oz.



### BREADED BREAST STRIPS, GF

Made with NAE chicken breast, this strip has a flaky, crispy, potato coating and cooks up well in a deep fryer or oven.  
68046 145/1.1 oz.



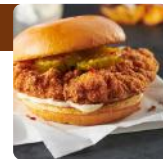
### TATER CHIP STRIPS™

Tater Chip Strips™ are chicken breasts surrounded by a crushed potato chip breading. Real potato chip pieces are clearly visible on this crunchy craveable chicken.  
68049 2/5 lb.



### SPICY BREADED CRISPY CHICKEN FILLET

Spicy, crispy, crunchy yet juicy with a scratch-made, hand-breaded appearance. Cayenne pepper adds a well-balanced heat.  
68072 28/5.7 oz.



### INFERNO WINGS®

The spice and flavor go all the way through for a fiery wing perfect for customers who like it hotter than hot! Fully cooked.  
68636 2/6 lb.



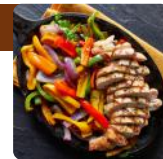
### SIGNATURE BREADED CHICKEN FILLET

Non-fritter and par-fried. Scratch-made, hand-breaded appearance. Well balanced between buttermilk batter with country-style coating.  
68048 28/5.7 oz.



### FAJITA CHAR-GRILLED SLICED BREAST

Fully cooked, boneless, skinless sliced, whole muscle chicken breast fillet seasoned with authentic south-of-the-border flavors.  
68692 2/5 lb.



**PLANT BASE MOZZARELLA**  
A mozzarella-style cheese with good melt and stretch properties.  
46370 4/2.5 lb.

**FETA CHEESE**  
Our Feta cheese is packed in a brine solution to ensure its traditional Feta flavor. Feta Cheese is a great salad topper and is used in a wide range of new-age dishes.  
46564 2/8 lb. | 1/8 lb.

**CRUMBLED GOAT CHEESE**  
This tangy cheese crumble is made from fresh goat's milk and perfect for salads, pastas and many other dishes.  
46720 2/2 lb.

**SHREDDED PARMESAN CHEESE**  
Parmesan is used for a wide range of cooking applications, especially as a salad, pizza and pasta topper, and as a key ingredient in the world's best Alfredo sauces.  
46868 4/5 lb. | 1/5 lb.

## Original Bagel

The Patient Bakers

Hearth par-baked Original Bagels are now 95 percent complete so you may choose to bake them freezer-to-oven for that perfect fresh-baked flavor without the lengthy preparation and time. You may also simply thaw and serve.



**POPPY**  
62414 45/5 oz.



**WHOLE WHEAT**  
62398 45/5 oz.



**GARLIC**  
62375 45/5 oz.



**PLAIN - SLICED**  
62380 15/6 pk.



**BLUEBERRY**  
62384 45/5 oz.



**EGG**  
62388 45/5 oz.



**EVERYTHING**  
62358 45/5 oz.



**JALAPENO**  
62362 45/5 oz.



**ONION**  
62364 45/5 oz.



**SESAME**  
62416 45/5 oz.



**SPINACH**  
62393 45/5 oz.



**TOMATO BASIL**  
62396 45/5 oz.

Dei Fratelli



LOCALLY GROWN

Packaged within hours of harvest

FRESH PACKED

VINE RIPENED

For the freshest tasting tomato products

**CRUSHED TOMATOES**  
13030 6/#10

**DICED TOMATOES**  
13054 6/#10

**TOMATO SAUCE**  
13180 6/#10

**PETITE DICED TOMATOES**  
13164 12/28 oz. 39.00  
13053 6/#10

**SEASONED DICED TOMATOES**  
13059 6/#10

**TOMATO PUREE**  
13120 6/#10

**SAUERKRAUT**  
11830 6/#10  
12580 12/27 oz.

**PREPARED PIZZA SAUCE**  
13272 6/#10

**MARINARA SAUCE**  
Italian: 13494 6/#10  
Deluxe: 13498 6/#10

**CHILI SAUCE**  
13660 6/#10

**KETCHUP**  
13822 6/#10

**TOMATO JUICE**  
29638 12/46 oz.

Wyman's

### WILD BLUEBERRIES

Fresh-Frozen Wild Blueberries are perfect in cereal, smoothies, muffins, salads, desserts, and any other tasty snack you can dream of.  
65400 1/30 lb. | 65408 2/5 lb.

### WHOLE BLACKBERRIES I.Q.F.

One cup of blackberries is just 62 calories and is brimming with vitamins, minerals and phytonutrients, including flavonoids with potent antioxidant and anti-inflammatory properties.  
65436 2/5 lb.

### MANGO CHUNKS I.Q.F.

Sensational in smoothies and sorbets, and one serving of mangos is an excellent source of Vitamin A and C.  
65444 2/5 lb. lb.

### WHOLE STRAWBERRIES I.Q.F.

Enjoy the sweet flavor of summer all year 'round with delicious fresh-frozen strawberries. Ideal for smoothies, desserts, sauces, and more, our strawberries are bursting with antioxidant vitamin C and fiber.  
65482 1/10 lb.

### SLICED CRANBERRIES

Blend into smoothies, mix into muffins, scones, pancakes and breads, or roast with veggies --- cranberries can be used year-round.  
65420 1/20 lb.

### RASPBERRIES I.Q.F.

Enjoy the sweet taste and excellent nutritional benefits of fresh-frozen red raspberries in smoothies, muffins and other baked goods.  
65440 2/5 lb.



Scan this QR code to view our complete line of Better Earth products.



**SOUFFLÉ CUP**  
2 oz.: 50030 40/50 ct.  
4 oz.: 50032 40/50 ct.



**LID**  
2 oz.: 50031 40/50 ct.  
4 oz.: 50033 40/50 ct.



**TACO CLAMSHELL  
2-COMPARTMENT**  
50385 4/75 ct.



**TACO CLAMSHELL  
3-COMPARTMENT**  
50386 4/75 ct.



**ROUND FIBER BOWL 6.3"**  
24 oz.: 49836 4/100 ct.  
32 oz.: 49840 4/100 ct.



**PLA LID FOR 24-48 OZ.  
ROUND BOWL**  
49837 4/100 ct.



**24 OZ. OVAL BAMBOO  
BOWL**  
49839 4/100 ct.



**PLA LID FOR 24-48 OZ.  
OVAL BOWL**  
49838 4/100 ct.

**HOT WHITE CUP**  
12 oz.: 50402 50/20 ct.  
16 oz.: 50404 25/20 ct.  
20 oz.: 50406 25/20 ct.

**HOT WHITE CUP LID**  
50408 50/20 ct.



## Thaw & Serve Muffins



**FRENCH TOAST**  
This muffin is packed with cinnamon, apple and butter flavor.  
62038 12/6 oz.



**CINNAMON CHIP**  
A delicious muffin filled with sweet cinnamon chips.  
62048 12/6 oz.

## Cinnamon Rolls



**ICED CINNAMON ROLL - THAW & SERVE**  
Cinnamon rolls are everyone's favorite and David's has just the right combination of robust cinnamon & brown sugar. Once thawed to room temperature, the filling is moist and "gooey." Whether served warm or at room temperature, the combination of brown sugar, cinnamon and fondant icing produces a tasty melt-in-your-mouth experience.  
63124 24/6 oz.



### DOUBLE FUDGE CHUNK BROWNIES (PRE-CUT)

Our classic chocolate brownie is overflowing with rich chocolate chunks on top and drizzled with chocolate fudge. Real chocolate, sugar, and eggs are combined to create the base of the brownies for a pure, homemade taste with a dense, fudgy texture.  
61258 48/4 oz.

### BLONDIE BROWNIES (PRE-CUT)

Scrumptious pecans, walnuts and semi-sweet chocolate chips are blended into a blonde brownie batter - a truly amazing dessert! Clean Label Promise: No artificial colors, no artificial flavors, and no preservatives.  
61270 48/4 oz.

## Gourmet Cookie Dough

**MACADAMIA NUT WHITE  
CHOCOLATE CHIP**  
63192 80/4 oz.

**OATMEAL RAISIN**  
63196 213/1.5 oz.

**SUGAR - 2 SIZES**  
63193 213/1.5 oz.  
63219 107/3 oz.

**CHOCOLATE CHIP MADE  
WITH M&M CANDIES®**  
63198 213/1.5 oz.

**PEANUT BUTTER WITH  
PEANUT BUTTER CHIPS**  
63195 213/1.5 oz.

**CHOCOLATE CHIP**  
63199 213/1.5 oz.

## Decadent Cookie Dough

**OATMEAL RAISIN**  
63187 80/4.5 oz.



**CHAOS**  
63188 80/4.5 oz.

**APPLE CARAMEL CRISP**  
63205 80/4.5 oz.

**M&M**  
63189 80/4.5 oz.

**SALTED CARAMEL**  
63220 80/4.5 oz.

**TRIPLE CHOCOLATE**  
63190 80/4.5 oz.

**REESE'S CHUNK**  
63264 80/4.5 oz.





**APPLE CARAMEL MINI BOMB**  
Apple spice cake filled with a salted caramel mousse. Coated with caramel white chocolate coating and a caramel drizzle.  
60285 1/20 ct.



**SALTED CARAMEL SQUARE**  
Moist caramel cream cake with a creamy caramel filling topped with caramel ganache.  
60370 24 ct.



**CHOCOLATE TORNADO CAKE**  
Dark rich and decadent 3-layer chocolate cake surrounded with a dark fudge icing.  
60300 2/10"



**GOLDEN BROWN CHEESECAKE**  
Rich vanilla cheesecake baked slowly for a smooth and creamy texture.  
60074 2/16 slices



**LEMONCELLO CAKE**  
Three layers of white cake filled with lemon cream frosted with lemon buttercream and garnished with white chocolate curls and lemon chocolate wedges.  
60356 2/16 slices



**3" WHITE & CHOCOLATE MOUSSE CAKE**  
A layer of rich chocolate cake, dark chocolate mousse and white mousse, topped with chocolate ganache and a chocolate decoration.  
60334 1/20 ct.



**CARROT CAKE**  
Made with fresh carrots, raisins, pineapple, and spices. Finished with cream cheese frosting and walnuts and decorated with cream cheese frosting carrots.  
60320 2/10"



**WHITE CHOCOLATE TWIST**  
Chocolate cake layered with white mousse and buttercream. Each slice is covered in white and chocolate chips and finished off with a rosette.  
60330 2/10"



**TURTLE CHEESECAKE**  
Golden brown cheesecake topped with caramel pecans and walnuts, then drizzled with chocolate.  
60306 2/16 slices



**4" CARAMEL APPLE TART**  
Almond dough shell filled with apples, topped with streusel topping and caramel.  
60345 1/12 ct.



**3" CHOCOLATE LAVA CAKE**  
Warm melted chocolate flows from the center and the outer edge. Microwave 30 seconds from the freezer.  
61454 1/20 ct.



*for a great coffee partner...*  
**COUNT ON NEW ENGLAND COFFEE**



New England Coffee has been roasting coffee right in New England for over 100 years. We start with the finest coffee beans from the best sources, and use our time-honored methods of roasting and blending to deliver the highest quality coffee. Our complete foodservice program and dedicated team mean you can count on New England Coffee for a great coffee partner to drive growth for your business.

**FRENCH ROAST**

Rich, aromatic dark-roasted beans with a smooth flavor that is ideal for both drip-brewing or espresso. (Dark Roast)  
**Ground:** 28054 24/2.5 oz.  
**Whole Bean:** 27990 2/4 lb.

**NEW ENGLAND EYEOPENER BLEND®**

An award-winning blend of rich Colombian and Central American beans with zesty French Roast. For a refreshing alternative, escape the daily grind and enjoy your next cup of EyeOpener™ coffee iced!  
**Whole Bean:** 28000 2/5 lb.  
**Ground:** 28002 48/7 oz.

**COLOMBIAN EXCELSO**

A smooth, full-flavored blend. Rich aroma, mild acidity, and a full-bodied flavor are its signature.  
**Ground:** 28012 128/2.5 oz.



**COFFEE KITS (FRAC PACKS & FILTERS)**



Start your workday off right with New England Coffee®. We offer kits which are pre-measured coffees in fractional packs (pre-measured coffees in foil pouches) and include filters. Filter Packs (pouches) are pre-measured coffees in a filter pouch.

**BREAKFAST BLEND KIT**  
28044 42/1.75 oz.



**MAPLE FLAVORED  
WAFFLE BITES**  
64672 6/6 lb.



**MAPLE FLAVORED  
WAFFLE FRIES**  
64670 6/4.5 lb.



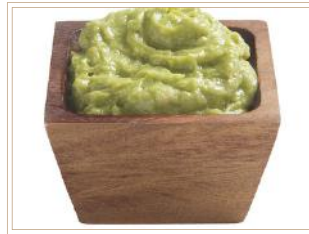
**HOUSE CUT POTATO  
CHIPS SKIN ON**  
64686 6/5 lb.



**ROASTED PEPPERS &  
ONIONS**  
64474 6/2.5 lb.



**SLICED PEACHES - IQF**  
65434 4/5 lb.



**AVOCADO PULP SUPREME**  
72726 6/3 lb.



**TORK ADVANCED MINI JUMBO BATH  
TISSUE ROLL REFILL, 12024402, 751 FT.**  
49714 1/12 ct.



**TORK MATIC HAND TOWEL  
ROLL REFILL, 700'**  
Natural: 49626 6/700'  
White: 49624 6/700'



**DART 8" X 8" X 3" CLEAR SEAL OPS  
FOOD CONTAINER - HINGED LID**  
49938 1/250 ct.



**DART CLEAR SEAL 5 X 5 PLASTIC  
FOOD CONTAINER - HINGED LID**  
40308 4/125 ct.



**DART CLEAR SEAL OPS 19.8 OZ 1-  
COMPARTMENT HINGED CONTAINER**  
49944 4/125 ct.



**DART 2 OZ. SOUFFLÉ CUPS**  
50004 1/2500 ct.  
Lid: 50011 1/2500 ct.



**DART 4 OZ. SOUFFLÉ CUP**  
50014 1/2500 ct.  
Lid: 50015 1/2500 ct.



**ALMOND BREEZE  
UNSWEETENED ORIGINAL**  
88082 6/64 oz.



**ALMOND BREEZE  
CHOCOLATE**  
88095 6/64 oz.



**ALMOND BREEZE  
UNSWEETENED VANILLA**  
88099 6/64 oz.



**ALMOND BREEZE  
ORIGINAL**  
88094 6/64 oz.



**PLANET OAT  
ORIGINAL OATMILK**  
88068 6/52 oz.



**HOOD FRESH SKIM  
MILK**  
88108 4/1 gal.

Clam Chowder  
Pot Pie



**CHOPPED OCEAN CLAMS**

37334 12/51 oz.

**1/2" CHOPPED SEA CLAMS, IQF**

71282 2/5 lb.



**DI LUSSO® SOPRESSATA, FRESH**

An Italian style dry salami made with pork and slowly aged. Uses a natural beef casing.

66772 4/2.57 avg.

**JALAPEÑO BACON 13/17 CT.**

This raw wide shingled jalapeño bacon is rubbed with seasoning, and then hardwood smoked to give it a distinctive appearance and a robust flavor of bold jalapeño notes with enticing chili and southwestern flavors.

66960 2/7.5 lb.



Beautiful flame-seared meats. Slow-cooked to juicy perfection with authentic char marks.

*Pork*

**FIRE BRAISED PORK RIB**

69154 12/2 lb. avg.

**FIRE BRAISED PORK SHOULDER**

69152 2/6 lb. avg.

*Chicken*

**FIRE BRAISED CHICKEN THIGH**

69150 2/5 lb. avg.

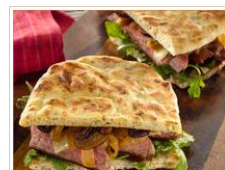
**FIRE BRAISED CHICKEN BREAST 4 OZ.**

68060 2/5 lb. avg.



**SLICED GYRO MEAT**

69201 1/10 lb.



**GYRO BREAD**

7" Pre-Oiled: 62490 12/10 ct.

4": 62480 12/10 ct.



**BAKLAVA**

93570 2/48 ct.

(National Baklava Day is November 17)



**2" COCKTAIL PITA**

**FLATBREAD**

Retail: 72064 12/20 ct.

Foodservice: 72062 1/648 ct.



**GREEK ORANGE CAKE**

69462 1/12 ct.



**MINI FILLO CUPS**

69475 2/44 ct.

Scan for operator  
rebate!



**ITALIAN MEATBALLS, COOKED**

Fresh, authentic Italian taste. Made with premium, high-quality ingredients, just like grandma makes.

.5 oz. 67452 2/5 lb.

1 oz. 67576 2/5 lb.

2 oz. 67606 2/5 lb.

**MINI MEATBALLS FOR SOUP, COOKED**

Quarter-ounce meatballs made with imported Pecorino Romano cheese and other spices.

67450 2/5 lb.



**1.5 OZ. GLUTEN FREE MEATBALLS, COOKED**

Made with imported Pecorino Romano cheese and other spices. Hard to believe they are gluten free!

67580 2/5 lb.



**BREADED ROUND EGGPLANT, SKIN ON**

Made with delicious eggplant, wheat, milk, and eggs, the Breaded Eggplant Cutlet is a ready-to-cook appetizer.

71642 1/10 lb.



95 Haverhill Rd  
Amesbury, MA 01913  
www.shaheenbros.com

Call your sales  
representative today!  
**978-388-6776**