

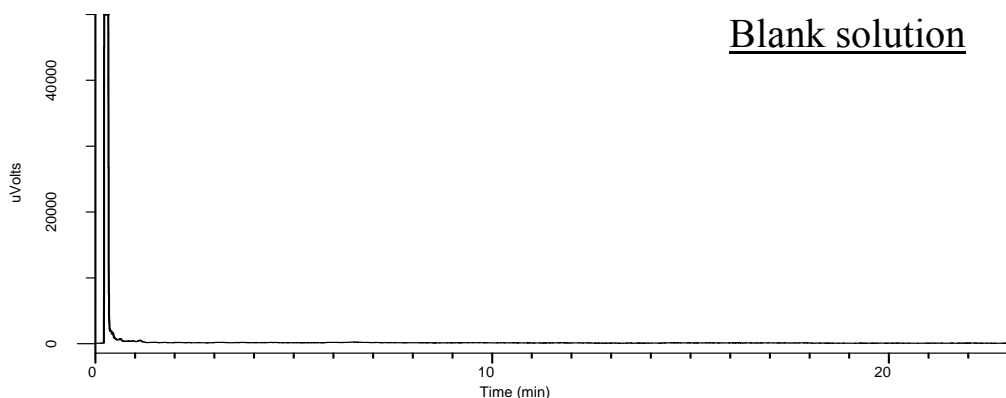
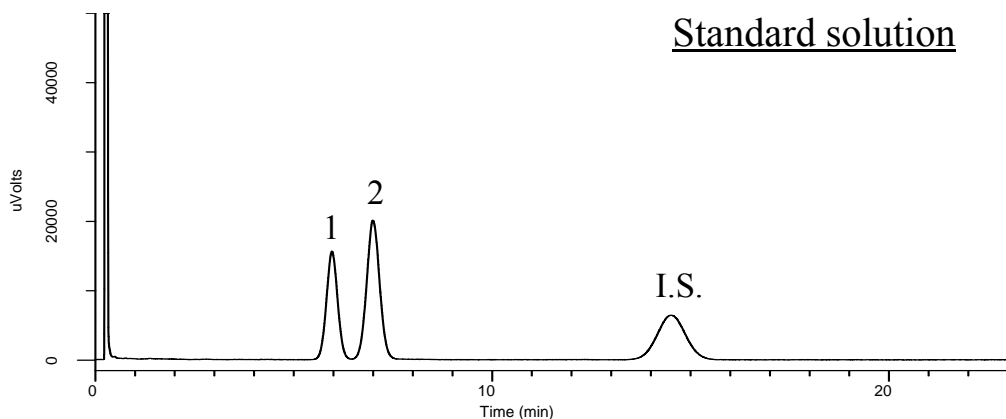
# InertSearch™ for GC

InertCap® Applications

## Analysis of Saccharin

(Under the Condition of the PDG (Pharmacopeial Discussion Group) Stage 6 Drafts)

Data No. GA 273-0904



### Conditions

**System** : GC-FID  
**Column** : InertCap 17 (Tailor-made column)  
0.53 mm I.D. x 10 m df = 2.0 µm  
**Col. Temp.** : 180 °C  
**Carrier Gas** : N2 10 mL/min Constant Flow  
**Injection** : Split 1:2  
250 °C  
**Injection Vol.** : 1 µL  
**Detection** : FID Auto Range  
250 °C  
**Sample** : Standard in Dichloromethane

### Analyte

1. *o*-Toluenesulfonamide  
2. *p*-Toluenesulfonamide  
I.S. Caffeine

Resolution (1, 2) : 1.86 (≥ 1.5)