



ISSUE 4 • FEBRUARY 2025

4-H UPDATES

Official Newsletter of Barber County 4-H

Club Day is February 22

Club Days will be on February 22 at South Barber High School. The schedule will start around 9:00 A.M., but the building will be open by 8:00 A.M. for those needing a chance for one last practice. Each club is asked to bring a snack to share (2 dozen cookies or snack bars) 4-H Council will provide water.

The entries are due February 10 from the Club Leaders to the Extension Office. An online schedule will be posted by the 14th on barber.ksu.edu and shared on the Facebook page.

Virtual entries are allowed. They will need to be emailed to Matt (amrhodes@ksu.edu) by February 20. As a reminder, according to 4-H Council Standing Rules, these entries will not be eligible for top blue or Regional Club Day.

The Club Day Guidelines are in a flipbook format. It is online at <https://heyzine.com/flip-book/ClubDayGuide>

A Photography Judging Contest will be available for all.

An example of a Youth Entrepreneur Challenge Table Display will be available. See Page 2 for Details.

Regional Club Day will March 29 at Medicine Lodge High School.

This issue:

Club Day
PAGE 1

Club Day and YEC
PAGE 2

4-H Council Info
PAGE 3

Looking Ahead
PAGE 4

Record Book Roundup
PAGE 5

State Events
PAGE 6

More State Events
PAGE 7

Back Cover
PAGE 8

Club Day

4-H Club Day is a public speaking and performing arts contest.

Options include demonstrations, talks, reading, speakers, musical numbers, and skits.

Each club turns in their entries. These are due February 10.

Details, including scoresheets, are available at www.barber.k-state.edu/4-h/2024%20Club%20Day%20Guidelines.pdf

Barber County Spring Show

APRIL 19-20, 2025
SEE FLYER IN
NEWSLETTER

Youth Entrepreneurship Challenge Comes to Barber County

Youth Entrepreneurship Challenge (YEC) is a program that is managed by Network Kansas and Kansas State University.

WHAT IS A YEC COMPETITION? Communities host locally-organized events that bring students together for the purpose of a hands-on entrepreneurship experience. Typically, local entrepreneurship competitions involve students preparing a written business plan or executive summary, a “tradeshow booth” (similar to a science fair tabletop display), and a pitch or presentation. Then students compete against one another in teams or individually. Students’ work is judged by local entrepreneurs, resource partners, mentors, or other adults.

IMPORTANT ELEMENTS

- A written executive summary
- A formal presentation, and may also include an additional oral component of some sort - pitch, interview and/or a tradeshow
- Competitive process by which students’ work is evaluated/scored
- Awards or prizes

See the flyer included in this newsletter to sign up for the Barber County Contest.

Details about the State Contest are available <https://cba.k-state.edu/academics/departments/center-advancement-entrepreneurship/KEC-competition-info.html>



Tagging Dates

MARKET BEEF: MARCH 7

BREEDING BEEF: MAY 2

BUCKET CALF: MAY 2

SWINE: MAY 2

SHEEP: MAY 2

MEAT GOAT: MAY 2

COST OF COUNTY TAGS: \$3
EACH

COST OF STATE EID TAGS: \$3
EACH

HORSE PAPERS: JUNE 1

Tagging Policy

For the 2025 Barber County Fair, all market and breeding animals will be identified by a State EID Tag, a Barber County Tag, Scrapie Tag or a Tattoo. This number will be submitted with 3 photos (Front, Side, & Side) by the deadlines announced in the 4-H Newsletter. Tags will be available for purchase in the Barber County Extension Office. The cost is \$3 per tag.

Office Closed Days:

- February: 17
- April: 18
- May: 26

Looking Ahead. . . .

February

- February 22: Club Day; Entries Due Feb 10
- February 16 and 17: Citizenship in Action
- February 17: YQCA Scholarship Due Date
- February 22 and 23: Horse Panorama-Rock Springs

March

- March 1: Swine Jr. Producer Day, KS 4-H Scholarships Due
- March 11: BACO Youth Entrepreneurship Challenge
- March 20: State 4-H Horse Judging Contes
- March 22: Super Saturday @ Colby, Flyer on Pg 15
- March 22: Goat Jr. Producer Day
- March 29: Regional Club Day

April

- April 15: Insect Art Contest Entries postmarked by
- April 17: State Youth Entrepreneurship Challenge
- April 19-20: Spring Livestock Show

May

- May 9: Wildhorse Camp Registration Forms Due
- May 9-11: Shooting Sports Leader Training @ Rock Springs

June

- June 4-6: Discovery Days
- June 17-19: Wildhorse Camp at Silver Maple

July

- July 24-27: Barber County Fair

Record Book Roundup

MONTHLY TIPS FOR COMPLETING YOUR RECORD BOOK

Take Note This Month

- Review the Achievement Pin Level form in your Record Book. These forms were updated statewide this year. The changes were not major, but make sure you are working all year on this.
- Club Day is a great time to think about 4-H Presentations. If you have a project you want to focus on for County Champion with Records. You will need to have a presentation to some group and a community service.

Record All Public Presentations

Sometimes groups will ask you to share about a 4-H Project or maybe you share something at the Manor. How many times do you share a project talk or demonstration at a club meeting?

These are often things we do without thinking about needing to record them. Make notes in your 4-H Book or on a calendar. Sometimes the 4-H Record Book is not the handiest tracking tool. A simple calendar for the year can be a great tool to keep with 4-H materials. Note who you presented to, what the topic was and how many people were there.

Do you need to find groups you can share with? Visit with Robin for some ideas of groups that would love to hear about your 4-H Projects. This can be a practice before Club Day, or just one more place to showcase your hard work on that Project Talk, Demonstration or Public Speaking.

Remember that non-4-H Talks that relate to the project should also be recorded. For FFA members, this is a great place to note any public speaking experience that also relates to your 4-H projects.



State Wide Events

Flyers, Images, Notes about State Wide Events

2025 Kansas 4-H Scholarships

Scholarships are due March 1st, 2025 by 11:59PM CST.



Full details are available on the [Kansas 4-H Website under Scholarships](#). For the sake of clarity in the following information, there will be two types of scholarships referenced: State 4-H Scholarships and the Vanier Family Scholarship Program (VFSP).

Eligibility

The new scholarship process has combined the State 4-H Scholarships and the Vanier Family Scholarship Program (VFSP) applications together. We hope that this encourages more applicants to pursue both of these scholarship opportunities. Please review the chart on the [webpage](#) to see which scholarships you are eligible for.

What You Will Need to Apply:

Application

Part 1: Select the scholarship program(s) that you are applying for (State 4-H Scholarships and/or the Vanier Family Scholarship Program).

Part 2: Answer questions regarding demographics, general 4-H participation, and academic information.

Part 3: Attach your Cover Letter and Resume (in a PDF). Please reference the Cover Letter and Resume handouts for additional information.

Guidelines

[Cover Letter](#)

[Resume](#)

Part 4: Submit!

References

You need two references for your application to be considered complete. When identifying references, select individuals who can speak to the leadership, dedication, and commitment you have demonstrated. You should NOT use family members as a reference. There are no requirements and/or restrictions for how you should know your references.

References will NOT submit a letter of recommendation. References will be asked specific questions.

More State Wide Events

Flyers, Images, Notes about State Wide Events

YQCA Launching Scholarship Program

The national youth livestock quality assurance program, Youth for the Quality Care of Animals (YQCA), recently announced they will be launching a scholarship program in 2025. Applications are expected to open in January and close on February 17. High school seniors through college students who are 21 years of age are encouraged to apply. Mark your calendars now, as it appears there will be a quick turnaround to apply once applications open! For more information, visit the [YQCA program website](#).

Insect Art Contest

The K-State Research and Extension Pesticide Safety and IPM Program is hosting its annual insect themed art contest, open to all ages and skill levels in Kansas. This year, the theme is “By the Light of the Moon: Insects at Night.” The goal is to explore which insects are active or inactive at night and why, then create artwork that fits the contest theme. See flyer at end of newsletter for entry form and more information.

Junior Producer Days

Mark your calendar!! The 2025 K-State Junior Producer Day dates have been set for next spring. Junior Swine Producer Day will be Saturday, March 1, with Junior Meat Goat Producer Day following on Saturday, March 22. and Super Saturday @ Colby also on March 22. See flyer at end of newsletter for more information.

Camps Coming in 2025:

Rock Springs Ranch Camps:

Every year, thousands of kids come to 4-H Camp at Rock Springs Ranch. They unplug, explore, play and learn the kinds of lessons that can last a lifetime. Campers grow socially, emotionally, physically and cognitively. Many make friends for life. It's also just plain FUN!

The values of 4-H are at the core of Rock Springs Ranch and they guide all of our programming. We believe the lessons learned here can create a foundation for success that will last far beyond their visit. **But you don't have to be a 4-H member to come to camp at Rock Springs!**

Everyone is welcome, regardless of 4-H membership!

Visit [Rock Springs Ranch](#) if you'd like to learn more about sessions, dates, rates and the 4-H Camp experience!

Wildhorse Camp at Silver Maple: June 17-19 Registration date cutoff is May 9th. See flyer at end of newsletter.



K-STATE
Research and Extension

Barber County

HAPPY
*Valentine's
Day*

K-State Research and Extension is committed to providing equal opportunity for participation in all programs, services and activities. Program information may be available in languages other than English. Reasonable accommodations for persons with disabilities, including alternative means of communication (e.g., Braille, large print, audio tape, and American Sign Language) may be requested by contacting the event contact Robin Eubank-Callis two weeks prior to the start of the event at 620-886-3971 or reubank@ksu.edu. Requests received after this date will be honored when it is feasible to do so. Language access services, such as interpretation or translation of vital information, will be provided free of charge to limited English proficient individuals upon request.

Kansas State University Agricultural Experiment Station and Cooperative Extension Service

K-State Research and Extension is an equal opportunity provider and employer.

Barber County Office

118 E Washington
Medicine Lodge, KS 67104

620-886-3971

www.Barber.ksu.edu

Facebook:
www.facebook.com/barbercountyextension

BARBER COUNTY YOUTH ENTREPRENEURSHIP CHALLENGE

- Open to individuals and teams (up to 3 youth) in 7th to 12th grade. Youth will create an
- Executive Summary, Elevator Pitch and Tradeshow Booth Businesses may be existing or
- potential. Winner qualifies to compete at the State Contest in Manhattan on April 17
- Sign up at bit.ly/BACOYEC by February 28. Complete Executive Summary by March 7
- Contact the Barber County Extension Office with questions at 620-886-3971.
-

PRIZES

FIRST PLACE - \$250
SECOND PLACE - \$150
THIRD PLACE - \$100

DATE

3.11.2025

TIME

2:00 PM - 6:00 PM

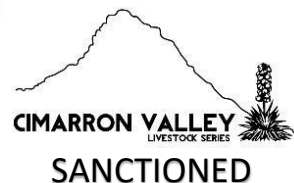
ADDRESS

Barber County Annex
211 West Kansas
Medicine Lodge



**YOUTH
ENTREPRENEURSHIP
CHALLENGE (YEC)
2024-2025**

Barber County Spring Livestock Show
"A Tribute to Danny Stewart and Terry Underwood"
Barber County Fairgrounds – Hardtner, Kansas



April 19-20, 2025

Entry Fees

- Small Animal - \$10 (Saturday ONLY)
- Beef - \$15 (Sunday ONLY)
- Showmanship - FREE

Prizes & Giveaways

Cash Prizes: Grand & Reserve Grand Champions
Breed & Reserve Breed Champions

\$2 bill awarded to each animal shown - Includes Breeding & Market

SHOWMANSHIP

Prizes for Grand, Reserve and 3rd Place

Entry Deadline

Entry form AND Cards for each specie must be turned in by designated time each day.

- Swine – 9:00 AM (Saturday)
- Goats – 10:30 AM (Saturday)
- Sheep – 11:30 AM (Saturday)
- Cattle – 10:30 AM (Sunday)

Hotel Accommodations:

Kiowa Motel (620) 825-4040 Gyp Hills
Guest Ranch (620) 886-3303 Hardtner
Guest Lodge (620) 296-4440

For more information call
Gina Stewart (580) 829-1315

Show Order & Times

Saturday

Showmanship prior to each specie

- 10:00 AM
- Swine
- Goats
- Sheep

Sunday

- 11:00 AM
- Showmanship
- Breeding Heifers
- Market Beef

SHOW RULES

Swine

- Must be born after January 1, 2025
- Maximum weight 165 lbs.
- 1st and 2nd place subject to weigh back (10 lbs.)

Goats

- Must have milk teeth present
- Maximum weight 85 lbs.
- 1st and 2nd place subject to weigh back (5 lbs.)
- Must have USDA premise ID tag

Sheep

- Must be born after January 1, 2025
- Maximum weight 110 lbs.
- 1st and 2nd place subject to weigh back (5 lbs.)

Beef

- Shown by weight
- Blow and Show (no paints, glue, adhesives, glues or boning soaps)

State of KS Animal Health requirements for
County Shows will be followed

Entry Form

Pre-Entries must be postmarked by April 10th
 Mail Entry to: Barber County Spring Livestock Show
 c/o Janie Stewart, 200 S. Church, Hazelton, KS 67061

Exhibitor Name _____ Age (on Jan 1, current year – Must be age 7 to exhibit)

Address _____ City _____ State _____ Zip _____

Phone Number (Please list contact number during show) _____ Email _____

Showmanship (FREE) (Exhibitors will be placed in Showmanship Classes according to age. Sr. 14-18, Int. 10-13, Jr. 7-9.)

Swine
 Sheep
 Goat
 Beef

Class Entry	Number of Head*
SWINE	
Breeding Gilt	_____ x \$10 = \$
Market Swine	_____ x \$10 = \$
SHEEP	
Breeding Ewe	_____ x \$10 = \$
Market Lamb	_____ x \$10 = \$
GOAT	
Breeding Doe	_____ x \$10 = \$
Market Goat	_____ x \$10 = \$
BEEF	
Breeding Heifer	_____ x \$15 = \$
Market Beef	_____ x \$15 = \$

*Breed, tag number(s), and/or tattoos will be asked for at registration on cards.

Entry for: Saturday Sunday Total: _____

Office Use Only:	Cash: _____	Check No.: _____	Pre-Enter Date: _____
Received by (initial): _____	Amount: _____		

4-H HORSE PANORAMA



FEBRUARY 22 & 23, 2025

ROCK SPRINGS RANCH
JUNCTION CITY, KS



Who should register:

All 4-H members age 9-18 who have an interest in horses, competing in Horse Bowl, Public Presentations or Hippology. This event determines who represents Kansas 4-H at several national contests.

Registration:

Opens December 23 and is due February 3. Late registration will be accepted until February 7. Only those who register by the February 3 deadline will receive a t-shirt. All participants, adults and attendees must register. Extension Agents must register all team members at https://kstate.qualtrics.com/jfe/form/SV_bloztOYr3jCfOjs.

Cost:

Youth (includes t-shirt, lodging, contest entries, and meals)

Friday Check-In - \$185

Full-Time (Saturday arrival, Sunday departure) - \$155

Saturday Only - \$130

Adult (includes meals and lodging)

Friday Check-In - \$170

Full-Time - \$130

Virtual - \$0

Attire & What to Bring:

Dress code is casual and industry appropriate.

Contestants must provide #2 writing utensil and notebook for note taking.

Event Objective

To provide an opportunity for youth to demonstrate their knowledge of equine-related subject matter, including structure and movement, in a competitive setting where attitudes of friendliness and fairness prevail. These contests will provide an educational experience for both participants and spectators.



Additional Information:

Kelsey Nordyke, knordyke@ksu.edu

<https://bit.ly/StateHorseJudgin>

Accommodations:

K-State Research and Extension is committed to providing equal opportunity for participation in all programs, services and activities. Accommodations for persons with disabilities may be requested by contacting the event contact (insert name) two weeks prior to the start of the event (insert deadline date) at (insert phone number and email). Requests received after this date will be honored when it is feasible to do so.

Kansas State University Agricultural Experiment Station and Cooperative Extension Service.

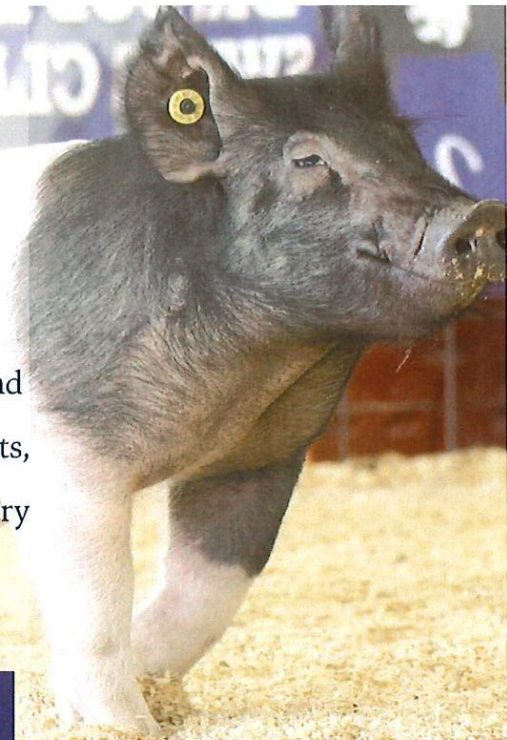
K-State Research and Extension is an equal opportunity provider and employer.

K-STATE
Research and Extension





2025 K-State Junior Swine Producer Day



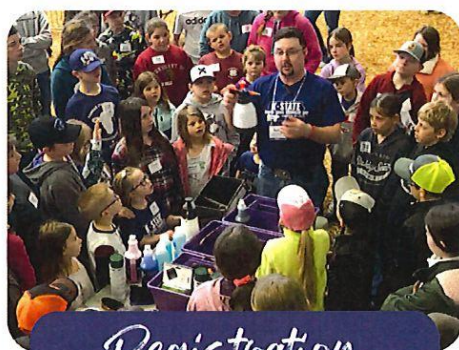
Join us on Saturday, March 1, 2025 for the biennial K-State Junior Swine Producer Day at the Stanley Stout Center in Manhattan. This educational event will be a fun-filled day in which youth, parents, agents, ag teachers, and swine project leaders can increase their knowledge of youth swine projects. Presentations will be provided by K-State faculty members, graduate students, former exhibitors, and guest speakers. All ages and skill levels are invited! Participants will receive a K-State Show Pig Guide, t-shirt, and complimentary lunch. Only those who register by February 5 will receive a t-shirt. The registration fee is \$20/person for those who sign up by the registration deadline, or \$25/person after that date. Registration is limited to 400 attendees, on a first come, first served basis. This is a family event! Anyone attending must register, including all youth and adults.

March 1



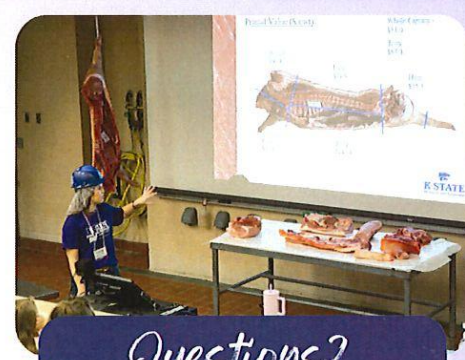
Tentative Schedule

- 8:00AM Registration Opens
- 9:00AM Welcome
- 10:15AM Project Selection
- 10:00AM Breakout Sessions
 - Nutrition, Meats, Facilities & Equipment, Breeds & Ear Notching
- 12:00PM Lunch
- 12:45PM Health
- 1:30PM Breakout Sessions
 - Showmanship, Daily Care & Clipping, Show Day Prep, Resources
- 2:00PM Wrap-up
- 2:30PM YQCA Training (optional)



Registration

- ✓\$20/person by February 5
- ✓\$25/person after February 5
- ✓Late registrants will not receive a t-shirt.
- ✓All attendees must register, including youth, parents, and adults.
- ✓No refunds.
- ✓ Attendance is limited to the first 400 participants to register.



Questions?

Joel DeRouchey
jderouch@ksu.edu
785.532.2280

Lexie Hayes
adhayes@ksu.edu
785.532.1264

Register By February 5

Limited Attendance

Location
Stanley Stout Center

Register Online
<https://commerce.cashnet.com/KSUASIND>



K-State, County Extension Councils, Extension Districts, and U.S. Department of Agriculture Cooperating. All educational programs and materials available without discrimination on the basis of race, color, religion, national origin, sex, age, or disability.

K-State Research and Extension and the Department of Animal Sciences & Industry, or their assignees, reserve the right to photograph, record the image and/or voice of participants for future research, educational, or promotional purposes. By attending, you provide consent to the above items and waive all rights to claims for payment or royalties in connection with

Scan Me!

K-State Junior MEAT GOAT PRODUCER DAY

3.22.25

Event

Join us on Saturday, March 22, 2025 for the biennial K-State Junior Meat Goat Producer Day at the Stanley Stout Center north of the K-State campus in Manhattan. This educational program will be a fun-filled day in which youth, parents, agents, ag teachers, project leaders, and volunteers can increase their knowledge of youth meat goat projects. Presentations will be provided by K-State faculty members, graduate students, former exhibitors, and guest speakers. All ages and skill levels are invited! Participants will receive a K-State Meat Goat Show Guide, t-shirt, and complimentary lunch. Only those who register by the deadline on February 26 will receive a t-shirt. The registration fee is \$20/person before February 26 and \$25/person after the deadline. This is a family event! Anyone attending must register, including all youth, parents, and adults. Registration is limited to 400 participants, filled on a first come, first serve basis.

K-State, County Extension Councils, Extension Districts, and U.S. Department of Agriculture Cooperating. All educational programs and materials available without discrimination on the basis of race, color, religion, national origin, sex, age, or disability.

Tentative Program

Friday, March 21
5:00-7:00PM *Optional Tour*
Sheep & Meat Goat Center

Saturday, March 22
8:00AM Check-in
9:00AM Welcome
9:15AM Selection
10:00AM Breakout Sessions
-Nutrition
-Facilities & Equipment
-Doe Management & Kidding
11:15AM Health & Wellness
12:00PM Lunch
1:00PM Breakout Sessions
-Showmanship
-Reproduction
-Clipping & Grooming

3:15PM Wrap-up
3:30PM YQCA Training (*optional*)
4:00-6:00PM *Optional Tour*
Sheep & Meat Goat Center

Registration

- 💰 \$20/person by February 26
- 💰 \$25/person after February 26
- 💰 Late registrants will not receive a t-shirt.
- 💰 All attendees must register, including youth, parents, & adults.
- 💰 No refunds
- 💰 Attendance is limited to the first 400 participants to register.



Scan me!

Questions?

Lexie Hayes
adhayes@ksu.edu
785.532.1264

Register Online

[https://commerce.cashnet.com /
KSUASIND](https://commerce.cashnet.com/KSUASIND)

By
February 26



NW 4-H

Judging Event

Super Saturday

Saturday, March 22, 2025, 9:00am - Finish

Host Site: Colby Community College Student Union and Thomas County Fairgrounds. Colby, Kansas

Judging Contests include: 9:00am to 12:30pm -- \$7.00

Crops, Entomology, Horticulture, Life Skills, Photography, Livestock Skill-a-thon

Volunteer Sessions for Parents and Volunteers - Free, 10:00am

Livestock Judging : 12:30pm Thomas County Fairgrounds

Project Opportunities: (NON-LIVESTOCK Judging youth): 1:00 -3:00pm \$5.00

The afternoon will be filled with engineering and technology stations (robots, circuits, building bricks, etc.) and Visual Arts Stations (Scrapbook, clay, paper crafts, etc.)

Sack Lunches provided with mandatory RSVP - \$8.00



Registration Link:

https://kstate.qualtrics.com/jfe/form/SV_dajjdd7SK7HICeW

If you have any questions concerning this event, you may contact Robyn Trussel at 785-798-5020 or rdeines@ksu.edu or Chandra Plate at 620-388-7157 or cplate@ksu.edu

Time Line:

March 17th - Registrations for lunch and Project opportunities due

March 22nd:

- 9:00am to 12:30pm - Indoor Judging (Crops, Entomology, Horticulture, Photography, Life Skills, and Livestock Skill-a-thon)
- 10:00am to noon - Volunteer/ Parent Session
- 11:30am to 12:30pm Pick up Sack Lunch
- 12:30pm Check in for livestock Judging at Livestock Pavilion , Thomas Co Fairgrounds, Colby
- 1:00pm Livestock Judging Orientation
- 1:00pm to 3:00pm Project Opportunities
- 1:30pm Livestock Judging Contest Begins

Results:

Livestock Judging Classes will be talked at the conclusion of reasons being given, all other contest results will be sent out 5-7 business days after the event.

Who: Any 4-H or FFA Youth 7-18 years of age, plus volunteers and parents

Where: Colby Community College Student Union for Indoor and Thomas County Fairgrounds for Livestock Judging

Cost: \$7 per individual (1 contest or multiple)

\$8 Sack Lunch- Sandwich, chips, fruit, cookie and drink

Project Opportunities : \$5.00 Engineering & Technology and Visual Arts Stations

Registration will be paid at the Event with Cash or Check made payable to Ness County 4-H Council



Contest Divisions:

Juniors - age 7-8 participation prizes only

Intermediates - age 9-13

Seniors - age 14 and over



Team Notice -- A younger member may move up an age group to complete a team but will be required to complete the requirements of the age division through the entire contest.

Awards:

Certificates and medals will be awarded in the intermediate and senior divisions. The top three individual and the top team will receive medals. The top 10 individuals will receive certificates. Medals and Certificates will be delivered to the home county at the earliest time possible. Junior division will participate as a "learning experience" and receive a 4-H incentive at each judging area. Results will be posted to <https://www.walnutcreek.k-state.edu/>

NW 4-H Super Saturday Judging Event Eligibility Requirements: Any current member of a 4-H Club and/or FFA chapter is eligible to participate.

Judging Teams: a county, district or chapter may enter one or more three/four member teams in all judging contest areas. Present team member names at registration. If team are not identified at registration they will not be scored as a team. Top 3 scores will be used to determine team score. Team members must be from the same local unit.

Livestock Judging: Laurel & Logan Despain, Risa Overmiller

This judging contest is designed to teach youth how to analyze market and breeding beef, goats, sheep and swine, measuring them against a standard that is commonly accepted as ideal. There will be six classes. Juniors and intermediates will have 2 classes of questions, with no reasons. Seniors will give two sets of reasons. Officials will give placings and talk the classes at the end of the contest and awards will be announced.

Crops: Stacy Campbell

The contest will consist of identification of plants and samples, classification of samples (crop, noxious weed or common weed) all youth will identify 100 samples (50 seeds and 50 plants) a tie breaker of 6 samples will be used.

Entomology: Jake Faulkender

The contest is designed to help youth learn how to properly identify Kansas insects. Each division will identify insect specimens, Juniors will identify 15, Intermediates 20 and Seniors 25.

Horticulture: Ryan Engel, Jay Harris and Master Gardener Volunteers

The contest will consist of 3 or 4 judging classes of any horticulture section (vegetables, flowers, nuts, etc.)The identification contest will include 15 samples for juniors, 50 samples for intermediates and seniors.

<https://www.k-state.edu/hort-judging/> for identification resources.

Life Skills: Chandra Plate and Cindy Walker

Judging topics will be chosen from any 4-H project life skill, these could include, family consumer science, foods & nutrition, health & Safety, human development, housing, interior design and environmental issues. Junior division will judge 3 classes, intermediates 4 classes and seniors 6 classes.

Photography: Karen Nelson and Photo Action team volunteers

The contest will consist of six classes of photos, a written test, and a problem class. Juniors will only judge the photos. Test questions will come from the 4-H CCS curriculum, the 4-H Guide to digital photography, the national Geographic Ultimate Field guide to Photography (2009) and other photography reference material.

Livestock Skill-a-thon: Tamara Robertson, Laurel Despain and Jenilee Godsey

The contest is designed to provide a framework for youth to learn a variety of topics related to the production and management of beef cattle, meat goats, sheep, and swine. The contest will consist of 6 areas, including: livestock breed identification, equipment identification, wholesale and/or retail meat cut identification, anatomical identification, livestock feedstuff identification, and a written test. Juniors, Intermediates, and Seniors will complete all 6 areas with increasing difficulty for each age division.

Volunteer and Parent Session will share the updated Kansas 4-H Policy, Club Parent Committees information and a Q& A time for Parents and Volunteers to walk away with resources to Make the Best Better

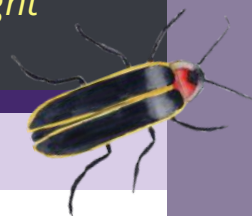
INSECT ART CONTEST 2025

By the Light of the Moon: Insects at Night

WATCH FOR JUDGING
RESULTS
in mid-May on the KSRE
Pesticide Safety and
Integrated Pest
Management Program
Facebook page!



Contest Announcement & Rules



The K-State Research and Extension Pesticide Safety and IPM Program is hosting its annual insect-themed art contest, open to all ages and skill levels in Kansas. This year, the theme is *"By the Light of the Moon: Insects at Night."* The goal is to explore which insects are active or inactive at night and why, then create artwork that fits the contest theme.

We will select a winner from each of the outlined categories and one overall winner will be selected from those entries. Artists that have art selected as 1st - 3rd place winners will receive a certificate and a prize to recognize their achievement. Select artwork may be used to create educational items.

- Kindergarten - 2nd grade
- 3rd grade - 5th grade
- 6th grade - 8th grade
- 9th grade - 12th grade
- Adults
- Traditional Illustration: Drawing or painting
- 3-D: canvas, collage, pottery, stained glass, or other media
- Digital Artwork

Rules

- Only one art entry per participant may be entered each year
- A legible, completed entry form must accompany all entries (*use provided entry form*)
- Traditional illustrations must be on 8.5" x 11" flat paper; Digital art must be 8.5" x 11" print size
- Participants may choose to email a jpg or png image of the entry if wanting to keep their original artwork; however, the image must be clear. The file should be named as the artist's name and age level (example: firstname.lastname.agelevel)
- Entries must be the original work of the entrant - no traced or copyright protected images
- Entries must feature an insect as the central point of focus that fits the contest theme
- A legible, completed art label must be attached to original artwork (*use provided art label*)
- **Entries must be postmarked or received by April 15, 2025**

Mail entries to: Frannie Miller
Pesticide Safety and IPM Program
600 West Woodside
McPherson, KS 67460

Or email to: Frannie Miller
Email address: pesticidesafety@ksu.edu
Subject Line: Insect Art Contest Submission

Return of Original Artwork

Participants may pick up their entries at the McPherson County Extension Office during operating hours after June 1, 2025, or elect to pay for mailing materials and postage to have original artwork returned.

INSECT ART CONTEST ENTRY FORM & LABEL

Complete form and send with art entry



Entries will be judged according to their adherence to the contest theme and overall visual impact, originality, artistic skill, and effort level. We are looking for colorful and creative art. Have fun!

ENTRY FORM - FILL OUT & SEND WITH ALL ARTWORK

Artist Information

First Name:

Last Name:

School Grade (write Adult if out of high school): _____

School/4-H Club/Affiliation: _____ Phone: _____

E-Mail Address: _____ County: _____

Mailing Address: _____

Artwork Category & Information

Traditional Illustration Digital Art 3-D Artwork: _____

Title and Description of Artwork: _____

Artwork Pickup Information

I do not need the artwork returned I plan to pick up the artwork after June 1st

I will contact you about payment to return the artwork by mail

ART LABEL - FOR ORIGINAL ARTWORK

Artwork Title : _____
Artist Name : _____
School/4-H Club/Affiliation : _____
Grade/Adult : _____
County : _____

Fill out, cut and tape to the back of original artwork, on the lower right side.