

JMFAGallery
Kate Johnson
Art Investment & Collectors Guide
2025



JMFAGallery Kate Johnson Art Investment & Collectors Guide 2025

Video and Resources

[About Kate Johnson](#)

[Kate's Portfolio](#)

[About Sam "Ketch" Monet](#)

[Ketch's Portfolio](#)

[Home](#)

[Exhibitions](#)

[Creativity](#)

[Gallery](#)

[Studio](#)

[Endorcements](#)

[Sold](#)

Your Art Defines You



JMFAGallery Guide



Ketch's Guide



All photographs and any material herein
copyright 2025, Sam "Ketch" Monet and
JMFAGallery.com; 1741 Ala Moana Blvd.
#98, Honolulu, Hawaii.

[JMFAGallery.com](#)

[Info@JMFAGallery.com](mailto:info@JMFAGallery.com)

**JMFAGallery Kate Johnson Art
Investment & Collectors Guide 2025**



JMFAGallery.com proudly represents some of Hawaii's most talented artists, showcasing original oil-on-canvas fine art. Our collection features works that explore historical and contemporary international themes, alongside pieces that capture the unique beauty of Hawaii. Every purchase includes a Certificate of Authenticity, ensuring the value and originality of your artwork.

JMFAGallery Art Investment & Collectors Guide 2025



Kate Johnson is an emerging abstract expressionist painter from Santa Cruz, California, recognized for her large-scale paintings on canvas that balance abstraction and realism. Although her conception of a subject design may not be completely predetermined before she starts a new painting, her color choices are typically conceived in advance. Her work explores the human form in abstract compositions while also incorporating strikingly realistic depictions of faces and a vibrant expression of movement and dynamism. Mostly self-taught, she has also studied several genres of art, including printmaking and figurative drawing.

Johnson has exhibited her work in galleries in California and Hawaii and has gained solid interest in her work from the outside world. She has also sold her work in both states to individual collectors and businesses. A former high-level triathlete, she infuses her art with the discipline, strength, and energy that defined her athletic career. Her deep connection to movement extends beyond the canvas—she has spent years racing catamarans throughout Hawaii and Tahiti, embracing the rhythm of the water much like she does in her art. A true lover of the arts, her life has been immersed in painting, music, and sport.

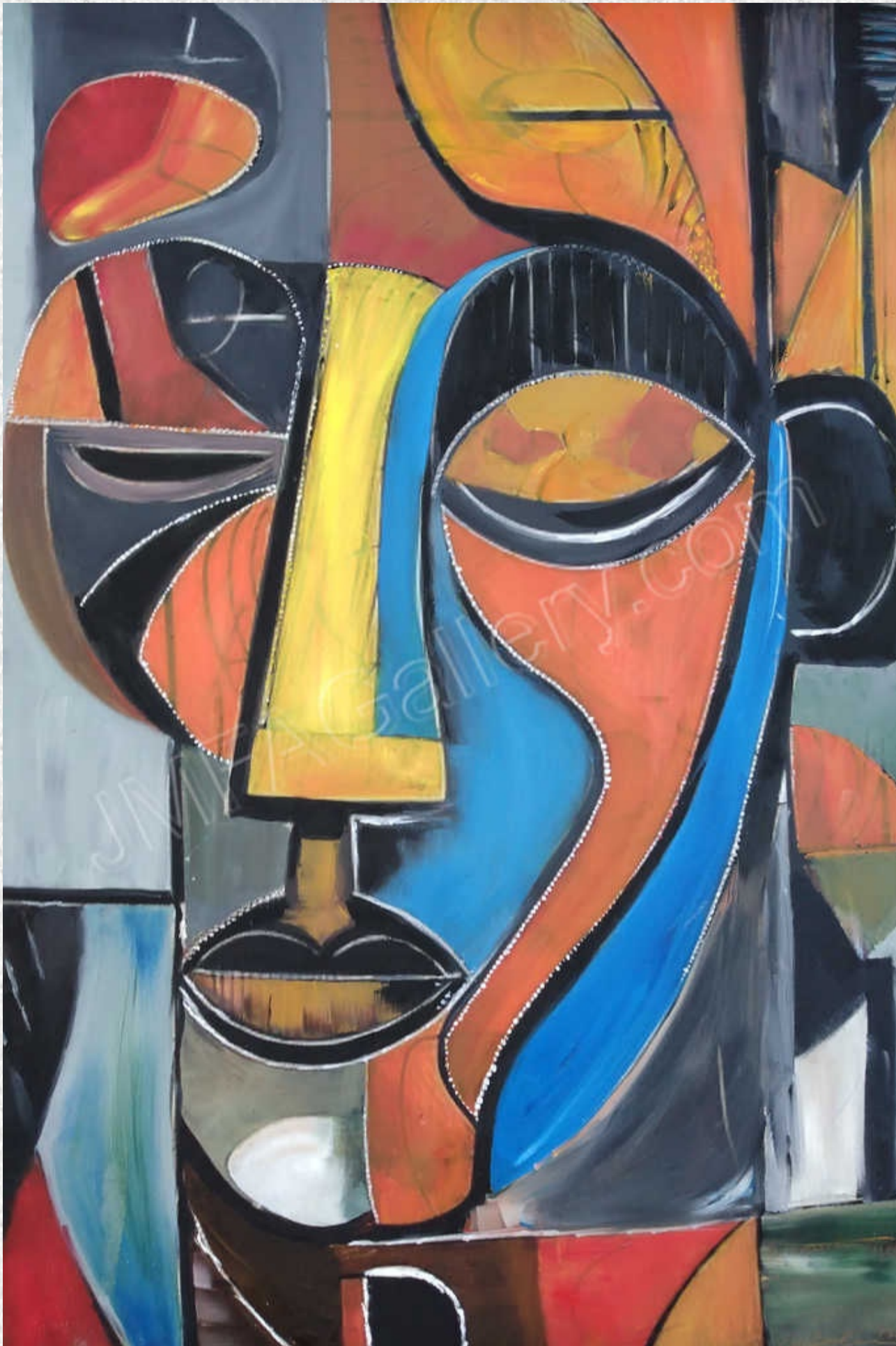
JMFAGallery Art Investment
& Collectors Guide 2025



Woman 30W"x40H"x1"D oil on canvas, 2024

This oil-on-canvas painting is **Kate's self-portrait**, a reflection of her world and the essence of who she is—expressed through color, texture, and emotion on the canvas.

JMFAGallery Art Investment
& Collectors Guide 2025



***Pensive Woman* 30W"x40H"x1"D oil on canvas, 2024**

In this oil-on-canvas painting **Kate depicts women in three different stages of life, each capturing distinct moods and emotions.** Through this piece, Kate explores the evolution of experience, strength, and vulnerability over time. It is a deeply personal work, as she feels each stage reflects a part of her, woven into the canvas with every brushstroke. This painting is **part of a three-piece series**, with each artwork sold separately, allowing collectors to appreciate them individually or as a complete narrative of transformation and self-reflection.

JMFAGallery Art Investment
& Collectors Guide 2025



***Women - Friends* 30W"x40H"x1"D oil on canvas, 2024**

In this oil-on-canvas painting **Kate depicts women in three different stages of life, each capturing distinct moods and emotions.** Through this piece, Kate explores the evolution of experience, strength, and vulnerability over time. It is a deeply personal work, as she feels each stage reflects a part of her, woven into the canvas with every brushstroke. This painting is **part of a three-piece series**, with each artwork sold separately, allowing collectors to appreciate them individually or as a complete narrative of transformation and self-reflection.

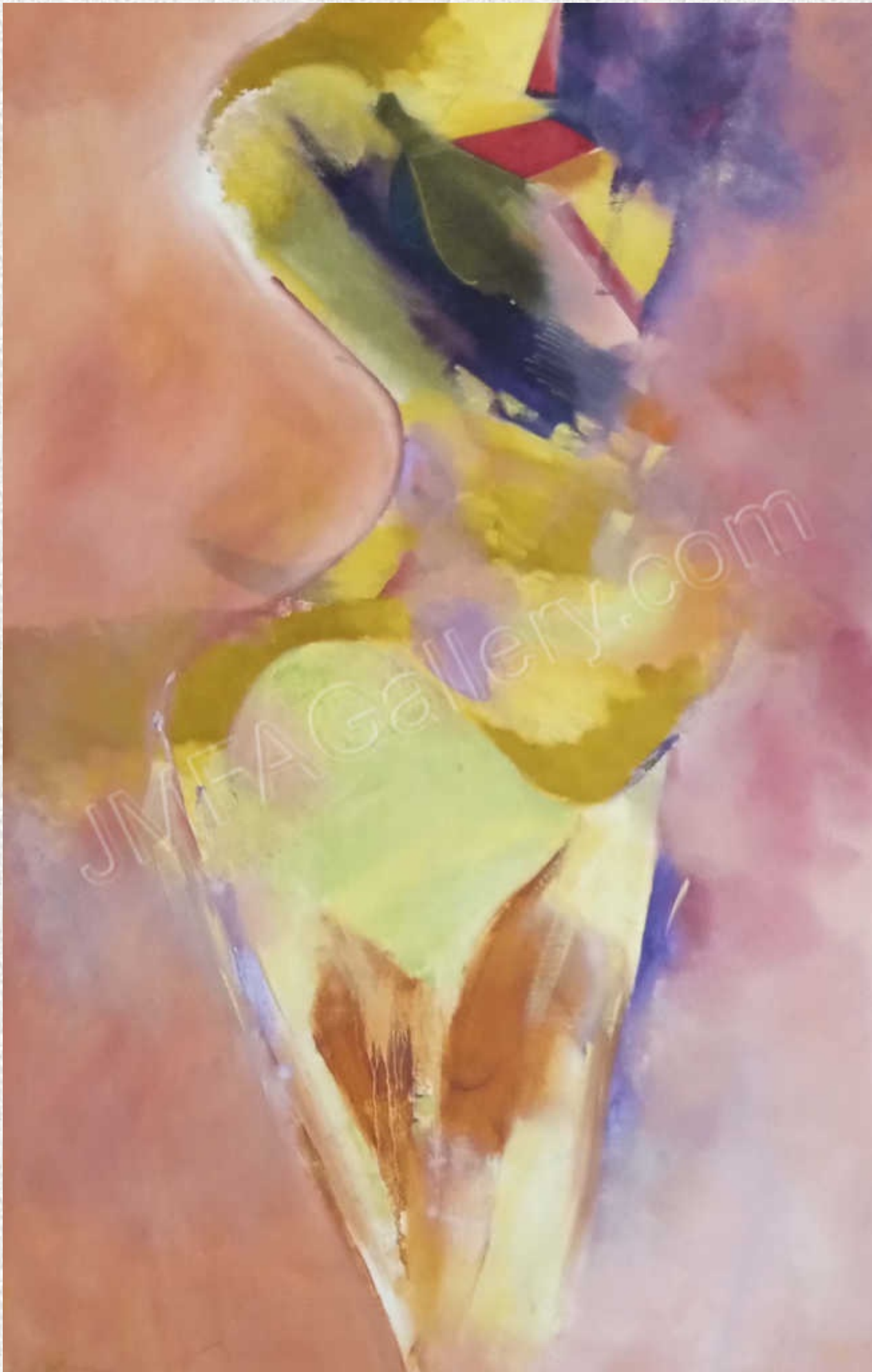
JMFAGallery Art Investment
& Collectors Guide 2025



***Complex Woman* 30W"x40H"x1"D oil on canvas, 2024**

In this oil-on-canvas painting **Kate depicts women in three different stages of life, each capturing distinct moods and emotions.** Through this piece, Kate explores the evolution of experience, strength, and vulnerability over time. It is a deeply personal work, as she feels each stage reflects a part of her, woven into the canvas with every brushstroke. This painting is **part of a three-piece series**, with each artwork sold separately, allowing collectors to appreciate them individually or as a complete narrative of transformation and self-reflection.

JMFAGallery Art Investment
& Collectors Guide 2025



***Femme Rose* 40W"x60H"x2"D oil on canvas, 2018**

Kate was inspired to create ***Femme Rose*** as a conceptual portrayal of female strength and comfort, deeply rooted in untamed natural instincts. The painting embodies a soothing and gentle interpretation of femininity—a woman in pink, exuding grace and resilience. The use of tempered pastels evokes a sense of lightness and tranquility, inviting the viewer to experience the delicate balance of strength and softness that defines the essence of ***Femme Rose***.

JMFAGallery Art Investment
& Collectors Guide 2025



Reclining Woman 67W"x47H"x2"D oil on canvas, 2016

Kate's deep appreciation for the female form inspired her to create this large oil-on canvas painting, depicting a **reclining nude in a moment of solitude**. Through soft contours and expressive brushwork, she sought to capture her serenity, vulnerability, and inner strength, inviting the viewer into a space of quiet reflection and timeless beauty.

JMFAGallery Art Investment
& Collectors Guide 2025



***Naima* 67W"x46H"x2"D oil on canvas, 2016**

Naima is an oil-on-canvas abstract painting that captures the essence of women in movement, embodying the rhythm and emotion of the song. Through fluid brushstrokes and dynamic composition, the piece conveys grace, strength, and the interplay of form and motion. The abstract elements reflect the depth and soul of the music, transforming sound into a visual experience that resonates with energy and elegance.

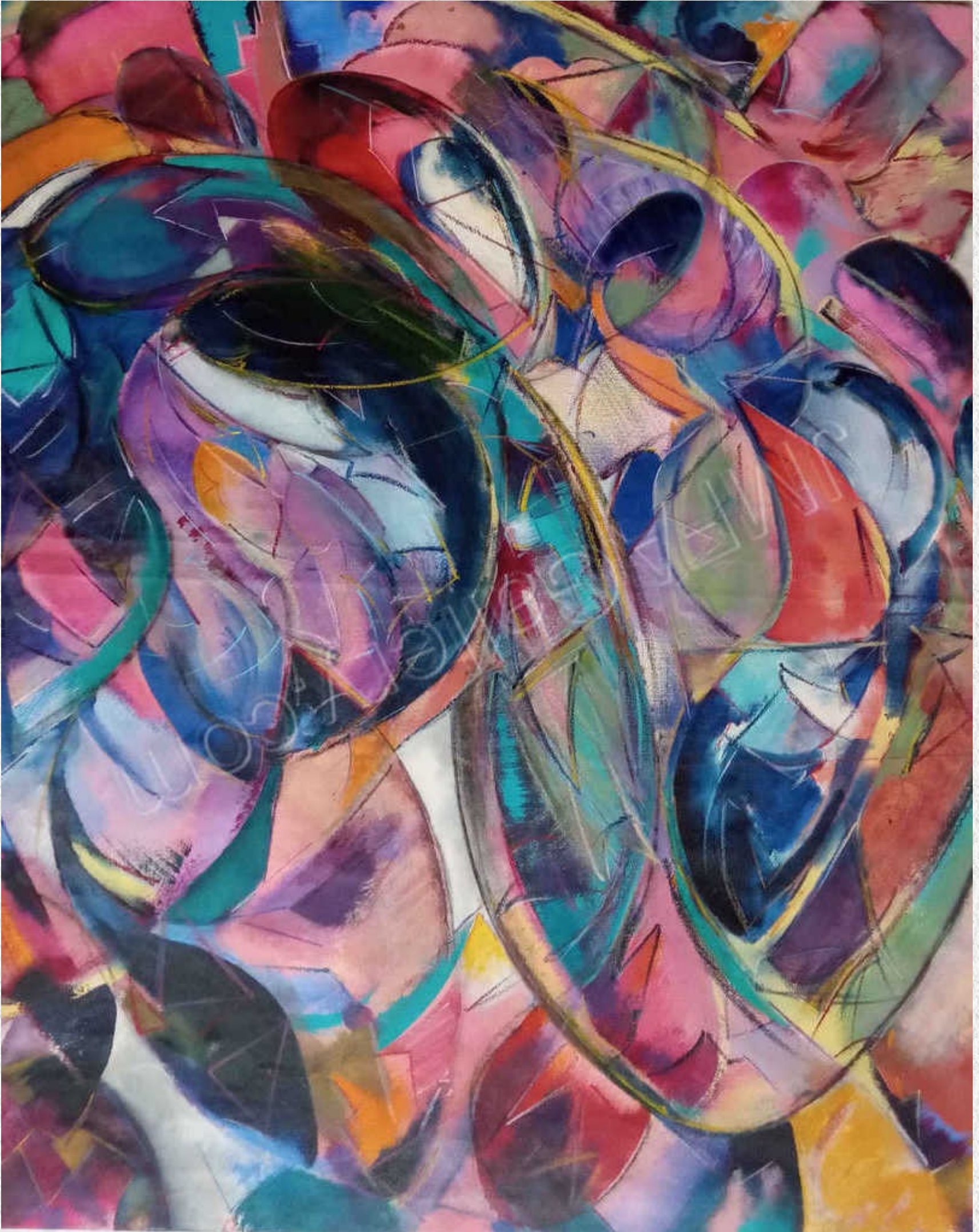
JMFAGallery Art Investment
& Collectors Guide 2025



***Woman's Melody* 30W"x40H"x1"D oil on canvas, 2024**

Woman's Melody is an oil-on-canvas painting in which Kate captures the essence of the feminine spirit, enveloped in an atmosphere of grace and introspection. Through flowing forms, delicate yet powerful brushstrokes, and a harmonious composition, the piece evokes a sense of depth, strength, and serenity. The painting resonates like a melody, expressing the timeless beauty and complexity of womanhood.

JMFAGallery Art Investment
& Collectors Guide 2025



***My Funny Valentine* 42W"x48H"x2"D oil on canvas, 2016**

Stretched, sealed, and ready for worldwide shipping, ***My Funny Valentine*** embodies Kate's abstract vision of **energy and heartfelt color in motion**. This one-of-a-kind artwork will never be reproduced as prints, ensuring its uniqueness.

JMFAGallery Art Investment
& Collectors Guide 2025



***Flora and Fauna* 30W"x40H"x2"D oil on canvas, 2024**

Flora and Fauna is a striking large oil-on-canvas painting featuring bold colors and abstract forms, dynamically portraying the beauty of flora and fauna in a vivid and expressive composition.

JMFAGallery Art Investment
& Collectors Guide 2025



***Neighborhood Blast* 65W"x42H"x2"D oil on canvas, 2018**

Neighborhood Blast is a large abstract oil-on-canvas painting where Kate spontaneously unleashed bold, bright colors and dynamic design onto the canvas. This energetic composition is a celebration of spontaneity and creative freedom, blending vibrant hues with expressive movement. The piece radiates intensity and joy, inviting the viewer to experience the raw power of color and form in an uninhibited, explosive visual statement.

JMFAGallery Art Investment
& Collectors Guide 2025



Brick Oven 48W"x42H"x2"D oil on canvas, 2015

Brick Oven is an oil-on-canvas abstract painting that embodies Kate's artistic vision through bold color and dynamic design. The interplay of shapes, textures, and hues creates an expressive composition, evoking warmth, structure, and energy. This piece is a fusion of abstraction and imagination, inviting the viewer to interpret its depth and movement in a personal way.

JMFAGallery Art Investment & Collectors Guide 2025



***Hawaiian Reef* 36W"x24H"x1"D oil on canvas, 2024**

This oil-on-canvas painting Kate captures the breathtaking beauty of a colorful ***Hawaiian reef***, teeming with life. Vibrant fish dart through the coral, while sharks glide through the crystal-clear waters. The bold, dynamic colors bring the underwater world to life, immersing the viewer into the energy and movement of the ocean. This piece celebrates the richness of Hawaii's marine ecosystem, showcasing its harmony, diversity, and raw natural beauty.

JMFAGallery Art Investment
& Collectors Guide 2025



***John Paul Jones* 24W"x24H"x1"D oil on canvas, 2024**

Kate immortalized ***John Paul Jones***, the legendary hero of the American Revolution, in this dramatic oil-on-canvas depiction of a fierce sea battle. Through bold brushstrokes and dynamic composition, this painting captures the intensity of naval warfare, the relentless spirit of Jones, and the fight for freedom on the high seas. His legacy lives on in this powerful tribute to courage, determination, and the birth of a nation.

JMFAGallery Art Investment
& Collectors Guide 2025



***Hawaiian Mountain Stream* 36W"x 24H"x1"D oil on canvas, 2024**

Kate's abstract impressionist oil-on-canvas painting captures the essence of a ***Hawaiian mountain stream***, with the majestic Ko'olau Mountains in the background. Using thick, expressive brushstrokes, she conveys the movement of the flowing water and the rugged beauty of the landscape. The interplay of color and texture brings depth and energy to the scene, evoking the raw, untamed spirit of Hawaii's natural wonders.

JMFAGallery Art Investment
& Collectors Guide 2025



***Akaka Falls* 24W"x24H"x1"D oil on canvas, 2024**

This oil-on-canvas painting Kate captures the breathtaking beauty of ***Hawaii's Akaka Falls*** through bold, expressive colors and dynamic, impasto brushstrokes. The cascading water, lush tropical surroundings, and vibrant hues create a visually striking yet harmonious composition. The visual concept enhances the natural wonder of the falls, making it a captivating and pleasant experience for the eye, evoking both energy and tranquility.

**JMFAGallery Sam “Ketch” Monet Art
Investment & Collectors Guide 2025**



JMFAGallery.com is a unique artist studio specializing in creating sophisticated yet powerful original oil-on-canvas artworks, ideal for homes, businesses, and collectors.

We provide professional packing and shipping services to ensure safe delivery. For galleries and design professionals, our offerings allow you to present your clients with extraordinary, one-of-a-kind pieces that elevate any space.

Certificate of Authenticity provided with each purchase.