

# InertSearch for LC

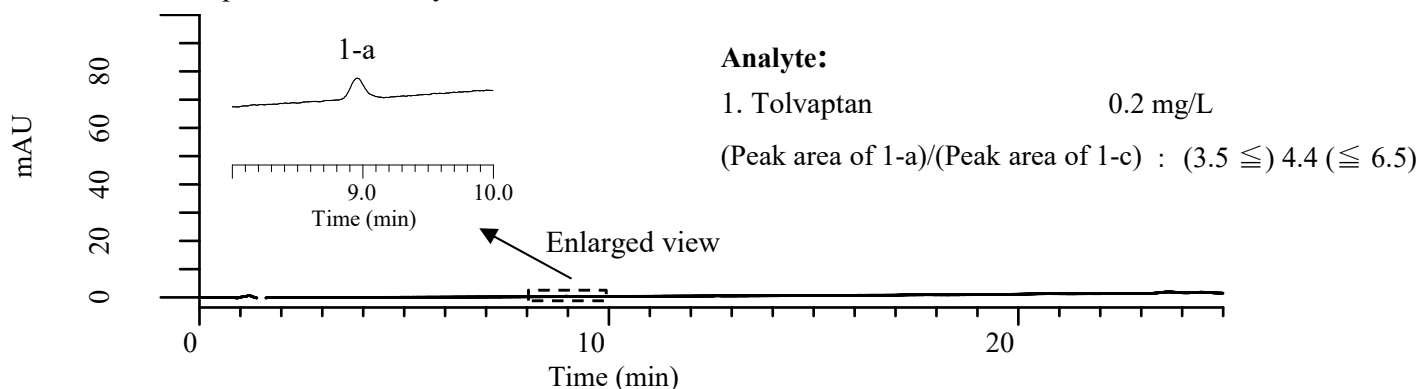
## Inertsil Applications

### Analysis of Tolvaptan

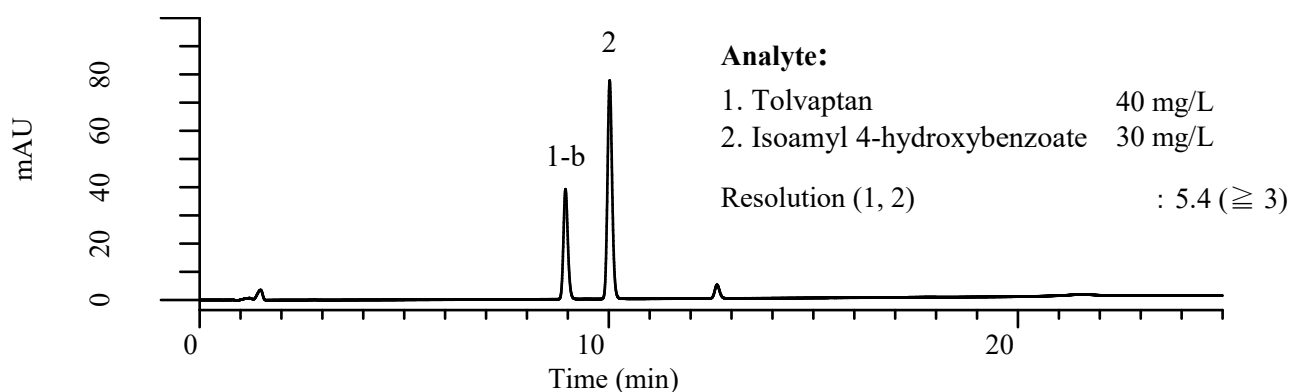
(Under the Condition of the draft for the Japanese Pharmacopoeia 18<sup>th</sup> Supplement II)

Data No. LB849-1140

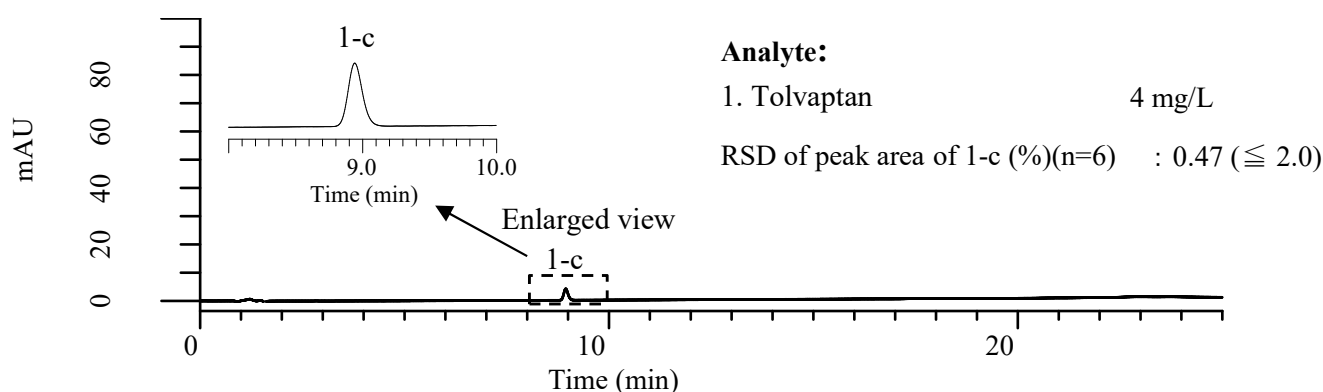
#### a. Test for required detectability



#### b. System performance



#### c. System repeatability



#### Conditions

**System** : Primaide HPLC system (HITACHI)  
**Column** : Inertsil ODS-4 (GL Sciences Inc.)  
(3  $\mu$  m, 100 x 4.6 mm I.D.)  
**Column Cat. No.** : 5020-04044  
**Eluent** : A) CH<sub>3</sub>CN/H<sub>3</sub>PO<sub>4</sub> = 1000/1, v/v  
B) H<sub>2</sub>O/H<sub>3</sub>PO<sub>4</sub> = 1000/1, v/v

**Flow Rate** : 1.0 mL/min  
**Col. Temp.** : 25 °C  
**Detection** : UV 254 nm  
**Injection Vol.** : 5  $\mu$  L  
**Sample** : Standard

Time (min)	A (vol%)	B (vol%)
0.0	40	60
20.0	80	20
25.0	80	20