



# SOYANG





## WHO WE ARE

Soyang Europe is a leading distributor of digitally printable wide-format and superwide-format media and surface coverings for the multiple industries including sign & display, design, marketing, construction, and décor.

Additionally, Soyang Hardware offers leading edge wide and superwide format print production hardware solutions from many of the industry's biggest and best-known printer brands.

The company's head office and 70,000ft<sup>2</sup> distribution centre in Accrington, Lancashire, holds stock in excess of 1.5 million m<sup>2</sup> of premium European and American manufactured products, alongside a variety of innovative substrates produced by high-end Far Eastern partners, all available for delivery on a next day service.



As well as supplying its own in-house solutions, Soyang also partners with a number of leading manufacturers for substrates such as Endutex, Senfa, BILD, Alumigraphics and Decal and hardware such as Mimaki, Fujifilm, Jetrix, Meevo, Veloblade, Plastgrommet, Keencut and Bubble-Free.

With materials carefully selected and product-engineered for application to exacting European standards, Soyang's range has become the first choice for banners, billboards, mesh building wraps, back-drops, retail signage and more, and along with a selection of high quality Hardware and finishing products Soyang's commitment to help customers keep 'Every Surface Covered' continues to strengthen.





# SOYANG

## INDEX

### SOYANG HARDWARE

Fujifilm Acuity Grand Format	3-4
Fujifilm Prime Flatbed & Hybrid	5-6
Jetrix	7
Mimaki 330 Plus Series	8
Mimaki 300 Plus Series	9
Mimaki JV100 Plus & CJV200	10
Mimaki UCJV330 & UCJV300	11
Mimaki UJV100 & UJF Series	12
Mimaki SWJ320 EA & TS330-3200DS	13
Mimaki TS100 & TS330	14
Mimaki TXF Series	15
Adkins Shaker	16
Mimaki Vinyl Cutters	17
Graphtec Vinyl Cutters	18
RIP Software	19
BubbleFree Pro	20
Widlaser	21-22
Vivid Veloblade	23
Vivid Easymount	24
MEEVO	25-26
Solent	27
Miller WeldMaster	28
Keencut	29-30
PlastGrommet	31

### SOYANG EUROPE Media

Sustainable	32
PVC Free	33
Textile	34
Print	35
Decor	36
SOSTick Self Adhesive vinyl	37-38
Decal Self Adhesive vinyl	39-40



# FUJIFILM

## Acuity Ultra R2 series



### Delivering phenomenal return on investment

The Acuity Ultra R2 is a high-quality, high-productivity superwide platform, available in UV and LED configurations. Engineered with the operator in mind and designed with specialist inks to support the printing of exceptional near-photographic interior graphics and high speed printing for banners and PVC signage, the Acuity Ultra R2 is unique in being able to combine ultra-high quality, superb productivity and a groundbreaking return on investment in one platform.



#### KEY FEATURES

- ▶ Native 3.5 picolitre, 3 level greyscale printhead.
- ▶ Linear-driven printhead carriage.
- ▶ Water-cooled vacuum table.
- ▶ Accurate and reliable media transport system.
- ▶ Double sided print function supports printing on both sides of the media in perfect registration.
- ▶ Output speed over 600 m<sup>2</sup>/hr.
- ▶ Multi-roll printing.





# FUJIFILM

## Acuity Ultra Hybrid



The Acuity Ultra Hybrid LED is a high-productivity hybrid flatbed and roll-to-roll printer from Fujifilm.

The Acuity Ultra Hybrid LED is a 3.3m high-end printer offering exceptional print quality and performance on both rigid and flexible substrates. The Acuity Ultra Hybrid LED prints at speeds of up to 218 m<sup>2</sup>/hr (RTR), and delivers a print resolution of up to 1200 x 1200 dpi. It is unique in being able to combine ultra-high quality and a competitive return on investment, for both rigid and flexible applications, all in one platform.



### KEY FEATURES

- ▶ Linear-driven printhead carriage.
- ▶ 3.3 m width.
- ▶ LED UV curing for lower power consumption.
- ▶ 6 channel with white option.
- ▶ Up to 218 m<sup>2</sup>/hr roll-to-roll.
- ▶ Dual roll printing.
- ▶ Prints on heat-sensitive materials.





# FUJIFILM

## Acuity Prime Series



### The benchmark platform for versatile print production

A true flatbed with a unique, exceptional design and high value, the Acuity Prime offers high quality printing on a range of rigid and flexible media, supported by its five dedicated vacuum zones and jettable primer. This range is available at a cost-effective price point and offers an excellent return on investment.



#### KEY FEATURES

- High resolution greyscale printheads.
- Up to 150 m<sup>2</sup>/hr throughput (Prime L - 204 m<sup>2</sup>/hr).
- Registration pins.
- 5 dedicated vacuum zones to minimise masking.
- Powerful instant curing LED UV system.
- Fujifilm Uvijet LED UV curing inks.
- Standard 4 colour plus white and clear, with optional jettable primer.
- A choice of HM and HF inks depending on requirements.
- Automatic Printhead Maintenance System (APMS).





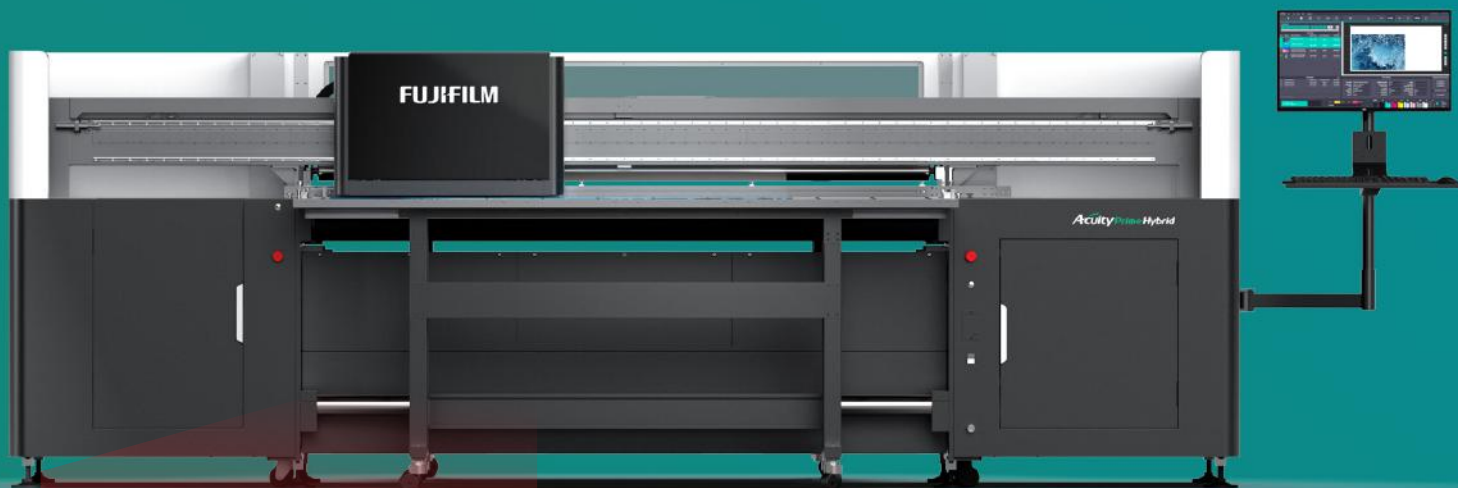
# FUJIFILM

## Acuity Prime Hybrid



### The benchmark platform for versatile print production

The Acuity Prime Hybrid is a mid-range LED UV wide format hybrid printer capable of printing on both rigid and roll media. The design of the printer is based on the award-winning Acuity Prime, including the printhead carriage, ink system, Automatic Printhead Maintenance System (APMS) and software interface.



#### KEY FEATURES

- ▶ Ultra-versatile, high quality printer.
- ▶ 2 m width.
- ▶ Long lasting, air cooled LED UV curing system.
- ▶ Uvijet HM high performance inks.
- ▶ 7 channels (CMYK plus optional White, Clear and Primer).
- ▶ Up to 141 m<sup>2</sup>/hr roll-to-roll.
- ▶ Prints on heat-sensitive materials

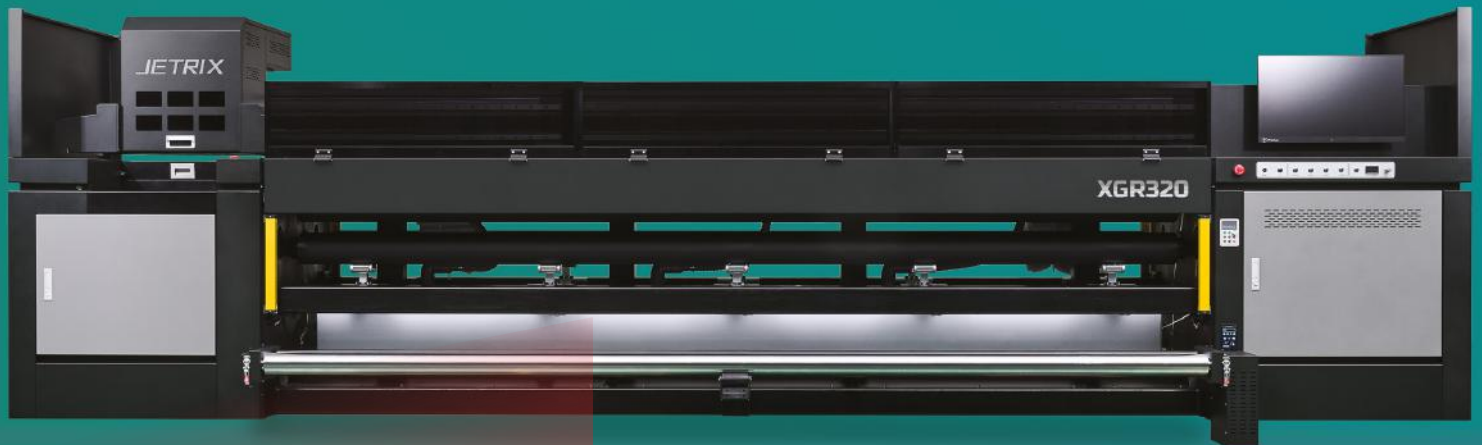






## Large format roll to roll digital UV LED inkjet printer

The Jetrix LXGR320 is a new multi-roll superwide format LED UV printer that can handle printing onto three rolls simultaneously. It can print up to 320cm graphics with printing speeds reaching 120sqm/h. It is perfect for PVC, flex, fabric banner and backlit banner applications for both indoor and outdoor uses.



### KEY FEATURES

- Sophisticated flatbed vacuum system.
- High productivity with instant curing on heavier media.
- Enhanced printing stability.
- Bright, vibrant colours with excellent ink adhesion.
- Safety functions including collision avoidance feature.
- Advanced and user friendly GUI software.







## Mimaki CJV330

Production Integration Printer /Cutter



### KEY FEATURES

- Eco Solvent Print & Cut
- Speed Up To 100m<sup>2</sup>/hr
- 2 Litre Bulk Ink
- 4 Colour & 8 Colour Ink Config

## Mimaki JV330

Production Integration Solvent Printer



### KEY FEATURES

- Eco Solvent Print Only
- Speed Up To 100m<sup>2</sup>/hr
- 2 Litre Bulk Ink
- 4 Colour & 8 Colour Ink Config





## Mimaki CJV300 plus

Mid Range Solvent Printer



### KEY FEATURES

- ▶ Eco Solvent Print & Cut
- ▶ Speeds Up To 105.9m<sup>2</sup>/hr
- ▶ Double the Speed of the CJV 150
- ▶ ID Cut Function

## Mimaki JV300 plus

Mid Range Solvent Printer



### KEY FEATURES

- ▶ Eco Solvent Print Only
- ▶ Speeds up to 105.9m<sup>2</sup>/hr
- ▶ ID Cut Function
- ▶ 8 Colour ink configuration

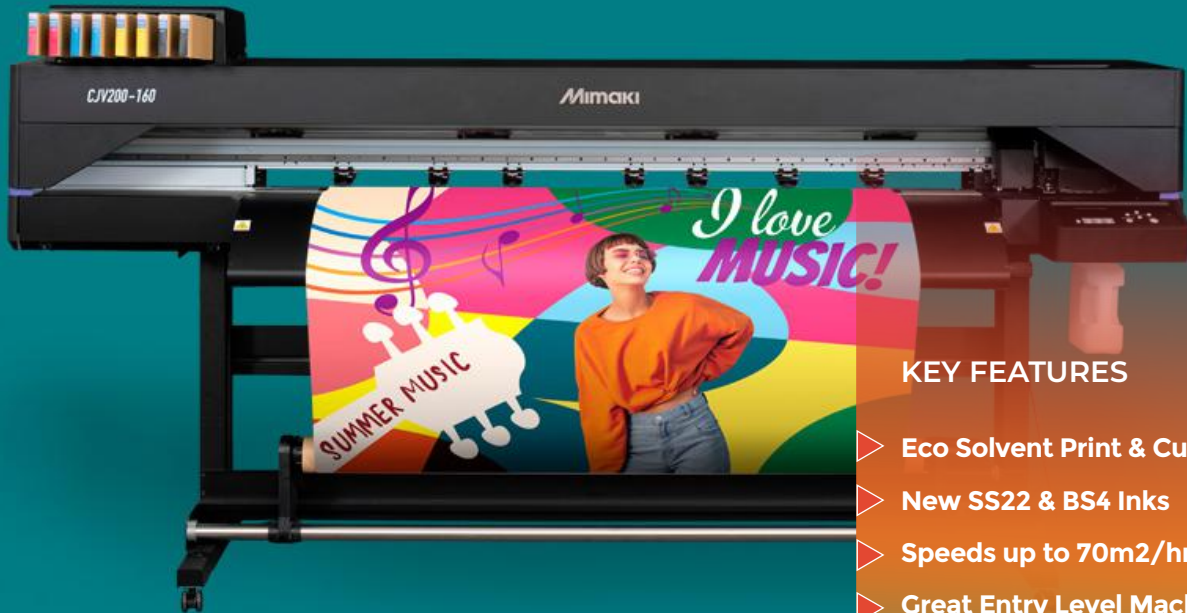






## Mimaki CJV200

Entry Level Solvent Printer/Cutter



### KEY FEATURES

- Eco Solvent Print & Cut
- New SS22 & BS4 Inks
- Speeds up to 70m<sup>2</sup>/hr
- Great Entry Level Machine

## Mimaki JV100-160

Entry Level Solvent Printer



### KEY FEATURES

- Eco Solvent Print Only
- Speeds Up To 69m<sup>2</sup>/hr
- ID Cut Function
- Entry Level Printer





## Mimaki UCJV330-160

LED UV Print & Cut Inkjet Printer



### KEY FEATURES

- ▶ LED UV Print & Cut
- ▶ Speed Up To 55m<sup>2</sup>/hr
- ▶ 170% Faster Than Predecessor
- ▶ Low Energy Usage

## Mimaki UCJV300

LED UV Print & Cut Inkjet Printer



### KEY FEATURES

- ▶ LED UV Print & Cut
- ▶ Speed Up To 25.8m<sup>2</sup>/hr
- ▶ 5 Layer Printing
- ▶ Low Energy Usage







## Mimaki UJV100-160 plus

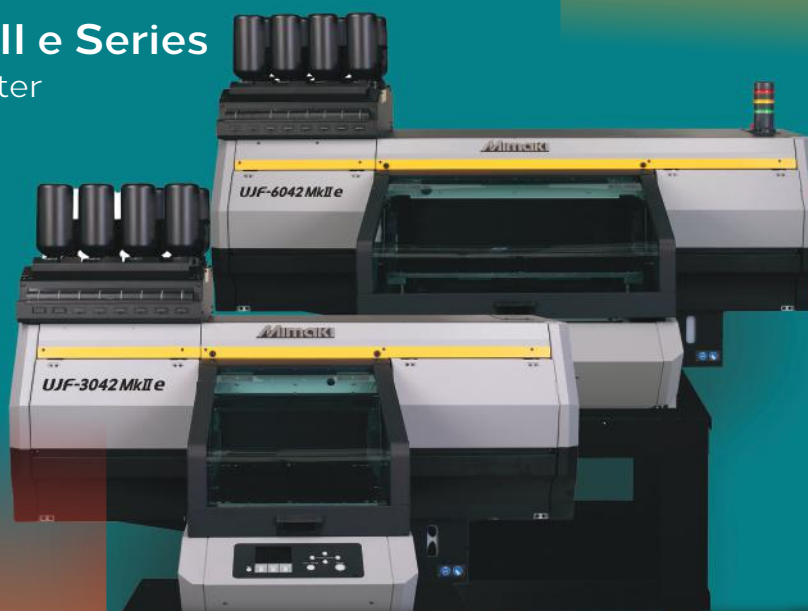
Entry Level UV Printer

### KEY FEATURES

- ▶ LED UV Print Only
- ▶ Speeds Up 23m<sup>2</sup>/hr
- ▶ Entry Level Printer
- ▶ 20% Energy Saving Vs Latex

## Mimaki UJF MkII e Series

UV LED Flatbed Printer



### KEY FEATURES

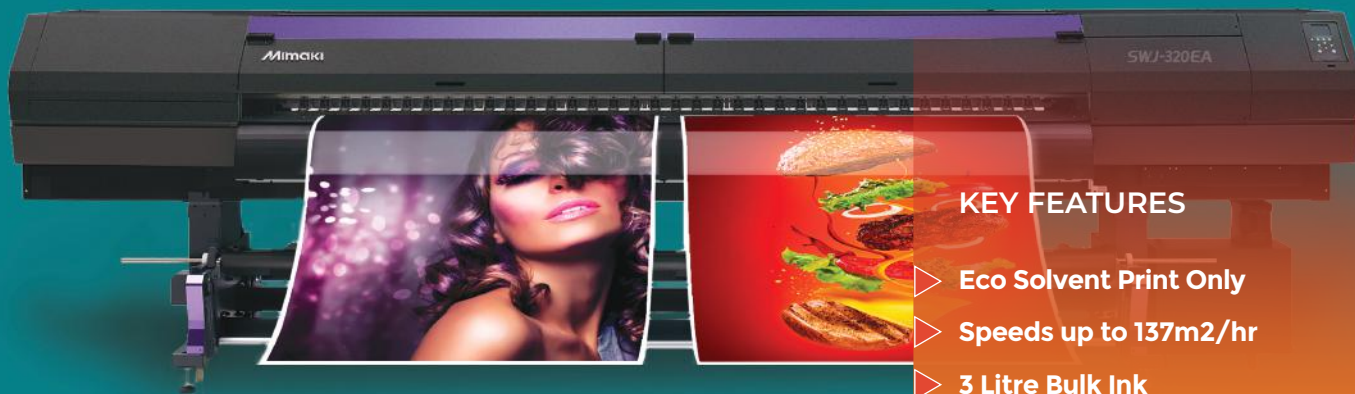
- ▶ A3 & A2 Bed Sizes
- ▶ Speeds Up To 3.52m<sup>2</sup>/hr
- ▶ White, Clear & Primer Ink Options
- ▶ Vacuum Bed
- ▶ Perfect For Personalisation





## Mimaki SWJ-320EA

3.2M Super Wide Solvent Printer



### KEY FEATURES

- ▶ Eco Solvent Print Only
- ▶ Speeds up to 137m<sup>2</sup>/hr
- ▶ 3 Litre Bulk Ink

### APPLICATIONS

- ▶ Signs & Graphics, Exhibition & Events, Banner & Display

## Mimaki TS330-3200DS

Direct & Paper Transfer industrial Dye Sublimation Printer



### KEY FEATURES

- ▶ Dye Sublimation & Direct to Polyester Print Only
- ▶ Speeds up to 150m<sup>2</sup>/hr
- ▶ Low Ink cost
- ▶ Soft Signage, Display, Fashion, Home Decor, Sportwear







## Mimaki TS330-1600

Production Dye-Sublimation Printer



### KEY FEATURES

- ▶ Dye Sublimation Print Only
- ▶ Speed Up To 135m<sup>2</sup>/hr Lowest Ink Costs
- ▶ Soft Signage, Display, Backlit
- ▶ Fashion, Home Decor, Promotional Items



## Mimaki TS100-1600

Entry Level Dye Sublimation Printer

### KEY FEATURES

- ▶ Dye Sublimation Print Only
- ▶ Speed Up To 70m<sup>2</sup>/hr
- ▶ Lowest Ink Costs

### APPLICATIONS

- ▶ Soft Signage, Display, Backlit
- ▶ Fashion, Home Decor, Promotional Items





## Mimaki TxF150-75

Direct to Film (DTF) Printer



### KEY FEATURES

- ▶ DTF Direct To Film
- ▶ Speeds Up To 2.6m<sup>2</sup>/hr
- ▶ OEKO-TEX Certified Inks
- ▶ Mimaki White Circulation Technology
- ▶ Soyang DTF Film & Powder Available

## Mimaki TxF300-75

Direct to Film (DTF) Printer



### KEY FEATURES

- ▶ DTF Direct To Film
- ▶ Speeds Up To 12.5m<sup>2</sup>/hr
- ▶ OEKO-TEX Certified Inks
- ▶ Mimaki white Circulation Technology
- ▶ Soyang DTF Film & Powder Available

### DTF FILM & POWDER Specification

PRODUCT CODE	DESCRIPTION		APPLICATION	
<b>DTF-PW</b>	DTF Powder	WEIGHT 1KG Bag/5KG Bag	Applicable on any textile by heat transfer	Suitable for most of DTF printers
<b>DTF</b>	DTF Film	WIDTH 0.3/0.6m      LENGTH 0.3/0.6m	Applicable on any textile by heat transfer	Suitable for any desktop or large format DTF printers



## Adkins Shaker

Inline Compact 600 Shaker Cure Unit



### KEY FEATURES

- ▶ 60cm max media width in a compact space-saving design.
- ▶ Low operating power consumption using a domestic plug (13amp 3 pin).
- ▶ Versatile, efficient production using automatic feed speed detection.
- ▶ Built-in medical-grade filtration for a cleaner operating environment.

## Adkins Shaker

DTF Inline 800 Shaker Cure Unit

### KEY FEATURES

- ▶ 80cm max media width.
- ▶ Low operating power consumption using domestic plug (13 amp 3 pin).
- ▶ Versatile, efficient production using automatic feed speed detection.
- ▶ Medical grade internal filtration, so there is no need to extract pipework.
- ▶ Filters are end-user replaceable.





## Mimaki CG-AR Series

Entry Level Vinyl Cutter

### KEY FEATURES

- 610mm & 1300mm Widths
- Fine Cut 9 Plugin For
- Adobe Illustrator and Corel Draw
- Cutting Speeds up to 73cm/s
- Cutting Pressure up to 550g



## Mimaki CG-FXII Plus

Production Vinyl Cutters



### KEY FEATURES

- 720mm, 1300mm & 1600mm Widths
- ID Cut Function
- Fine Cut 9 Plugin For
- Adobe Illustrator and Corel Draw
- Cutting Speeds up to 100cm/s





## Graphtec Vinyl Cutter

Graphtec CE 8000

### KEY FEATURES

- ▶ 3 Widths Available
- ▶ Guaranteed tracking up to 5m
- ▶ Barcode Reader
- ▶ 450g Cutting Force
- ▶ Speeds up to 1000mm/s



## Graphtec Vinyl Cutter

Graphtec FC 9000

### KEY FEATURES

- ▶ 4 Widths Available
- ▶ Guaranteed tracking up to 20m
- ▶ Barcode Reader
- ▶ 600g Cutting Force
- ▶ Speeds up to 1485mm/s





## ColorGate

### YOUR PARTNER FOR DIGITAL PRINTING

The Production server product family consists of highly flexible RIP software solutions that ensure to meet and configure individual requirements when highest quality demands are needed. All individual applications ensure excellent Colour Management with optimum colour rendering and consistent reproduction at any time. Whether large, wide and grand format printing, digital production according to international standards, such as ISO, FOGRA, PSD, Gracol, G7 as well as for campaign printing, textile or for screen printing and print and cut - the PS Line-up offers the optimal RIP configuration for all types of digital print services. ColorGATE always utilizes the latest Adobe PDF Print Engine (APPE) in its basic solutions.



## Onyx

### INNOVATIVE COLOUR TECHNOLOGIES

Full-featured RIP software with everything a print shop needs to get started in wide-format print. Enjoy additional colour management and finishing tools for greater output control and automated print-and-cut workflows with ONYX PosterShop. Onyx Thrive is double the power with twice the Adobe RIP processors, Job Editors, and a network license to suit the demands of any size print business using multiple devices. A single, scalable RIP and print workflow solution for your entire print production environment.



## Caldera

### UNIFY YOUR WORKFLOW FROM PREPRESS TO PRINT & CUT

- Achieve consistent colours on your printers & substrates
- Automate tasks to save time
- Reduce your production costs

### CalderaRIP

When you're looking for speed, reliability and flexibility in a busy production environment, CalderaRIP can handle all your print and print-to-cut applications. With a host of sophisticated features and intuitive user interface, CalderaRIP is ideal for growing printing businesses and for high-demanding production environments.



## PrintFactory

PrintFactory is versatile and scalable print software that enables job preparation to take place where it's most convenient, eliminates the need for users to be tied to a single RIP, and prevents bottlenecks caused by last-minute changes. PrintFactory is independent software developed by printers who understand the importance of improving workflows and colour management. With support for over 3500 devices, it seamlessly integrates with external systems, enabling two-way communication and providing valuable feedback.







## Flatbed Applicator

The Bubble-Free Pro Applicator and Flatbed Laminator allows a single operator to mount and laminate a wide range of materials in super-fast time whilst eliminating the danger of bubbles or creases. Mounting and laminating can be onto any flat surface up to 60mm thick. The Bubble-Free Pro Applicator is available in three widths - 1500mm, 1700mm and 2200mm - providing maximum working widths of 1450mm, 1640mm and 2140mm, respectively. The Bubble-Free Mouse might be small, starting at only 1000 x 2000mm but it still allows a single operator to mount and laminate materials in super-fast time whilst eliminating the danger of bubbles or creases.



### KEY FEATURES

- ▶ Quick mounting without any bubbles or wrinkles.
- ▶ Controlled application pressure prevents media stretching.
- ▶ Easy positioning of material to be mounted.
- ▶ Fast production speed for increased productivity.
- ▶ Quick and easy to learn.
- ▶ Self-healing cutting mat.
- ▶ A choice of colours available.

### The Bubble-Free Applicator can be ordered with:

Glass board and LED lighting and MDF board and PVC mat. It can also be ordered in customised dimensions.

The pressure roller has a 15mm-thick soft rubber coating to guarantee the bubble free application.

The pressure roller is controllable on both sides.

The pneumatic system uses FESTO parts.

The pressure of the roller can be adjusted over a wide range by the pneumatic controller.

The castors with brakes allow the table to be easily moved and/or fixed into position.





## Wiclaser Ceramic Laser

RF Laser



### KEY FEATURES

- ▷ Ceramic RF Laser Tube  
30W/60W-100W/120W
- ▷ Working Areas From  
813mmx508mm to 1600mm x  
1000mm
- ▷ Max Object Thickness Up to  
230mm
- ▷ Max Engraving Speeds up to  
2,000mm/s
- ▷ 1 Year Warranty

### Applications

For Cutting: Acrylic | MDF | Wood | Fabric | Leather

For Engraving: Acrylic | MDF | Wood

For Marking: Coated Metals | Glass | Stone | Slate





## WidLaser CO2 Laser

Manufactured in Portugal, with robust safety features and impressive speeds, these lasers are a perfect bridge between entry level and high end.. Perfect for commercial level use, as well as industrial mass production.



### KEY FEATURES

- > Standard DC Glass Laser Tube 60W-120W
- > Working Areas From 700mmx500mm to 1600mm x 1000mm
- > Max Object Thickness 150mm
- > Max Engraving Speeds up to 1,200mm/s
- > Max Cutting Speed 200mm/s
- > 1 Year Warranty

### Applications

For Cutting: Acrylic | MDF | Wood | Fabric | Leather

For Engraving: Acrylic | MDF | Wood

For Marking: Coated Metals | Glass | Stone | Slate





## Wide format digital die cutter

Automate your production, increase efficiency and diversify your business! Starting from sizes 1800mm x 1600mm, the VeloBlade Nexus is a range of wide-format digital die-cutting systems that operate seamlessly with substrates up to 25mm in thickness. Including; Dibond, MDF, fabrics, acrylic and much more! Opening up a vast array of markets for your business to operate in and enabling you to create endless amounts of products with exciting varying materials.



### KEY FEATURES

- ▶ Inclusive ZipCore software.
- ▶ Compatible with popular RIP software Caldera & Onyx.
- ▶ The freedom to create.
- ▶ CNC router for 25mm cut depth.
- ▶ Automatic cut depth setting.
- ▶ Rotating bed for roll-fed and sheetfed production.

### Applications

Use for Intricate and accurate cutting, creasing and perforating. Create endless amounts of excitingly unique products.

Working seamlessly with well-known design packages such as Adobe Illustrator, VeloBlade Nexus will fit comfortably within your workflow and take your operations to the next level.







## Easymount Single Hot

### KEY FEATURES

- ▷ Swing-out Arm Technology
- ▷ Variable Speed Control
- ▷ 6m/ Minute
- ▷ 25mm Mounting Thickness
- ▷ Reverse Mode
- ▷ Foot Pedal



## Easymount Air Single Hot

### KEY FEATURES

- ▷ Pnuematic Air Pressure
- ▷ Swing-out Arm Technology
- ▷ Variable Speed Control
- ▷ 10m/ Minute
- ▷ 30mm Mounting Thickness
- ▷ Reverse Mode
- ▷ Foot Pedal





## MX Event

### Silicone Edge Automated Stitching SEG Keder Sewing Machine

The Meevo MX Event with (Silicone Edge Automated Stitching) SEAS quickly and accurately handles and aligns large display textiles for fastening. This model is ideal for increasing workflow without any compromise on accuracy, automatically sewing SEG Keder to all different sizes of fabric panels.



#### KEY FEATURES

- ▷ Silicone Edge Automated Stitching.
- ▷ Automatically joins large format panels together.
- ▷ Eliminates a workflow backlog by automating tricky alignments.

This innovative solution provides a 4 metre long with the option of a 2m or 3m extension table which can be added to both ends to handle and align heavy and oversized display textiles for sewing SEG Keder or joining panels. This technological solution developed with levelling castors can be easily and quickly moved around the factory floor.





meevo



A semi-automatic sewing machine capable of performing 4 different sewing operations

NEW



## KEY FEATURES

- SM Versatile with SEAS is the right machine for companies that need to diversify their sewing solutions to create more production flexibility.

With SM Versatile, you don't need to invest in different sewing machines to respond to different finishing requests, as it is an equipment prepared to sew at least 4 important finishing operations in a single machine:

1. Sew SEG Keder
2. Sew reinforcement tapes
3. Velcro application
4. Sew open hems

## SM Optima+SEAS

- A semi-automatic SEG Keder sewing system Increase your productivity and quality in an easy and efficient way.

The SM Optima is a SEG Keder semi-automatic sewing system that is composed by a high-end lockstitch sewing machine, an optimized sewing table and a SEAS Universal Kit.

The system was developed to be as easy to use as possible, with ideal dimensions for large textile handling and to be easily moved across factory floor when necessary.

## SEAS Universal Kit

- The SEAS Universal Kit is a set of accessories that transform a normal sewing machine into a high quality and productive machine to sew any type of SEG Keder.

The focus on the development of this solution was to allow companies that already own a sewing machine to start or significantly increase the SEG finishing.

With a quick and easy installation, which can be done by any employee of the company, with intuitive use without the need for training, simple maintenance and reduced delivery times, this is the right solution for anyone who wants to be present in one of the areas of highest growth in the Soft Signage world.



Reel Holder



Guide



Feeder





## SOLENT TEXSEW PRO CONVEYORLINE

VERSATILE SEWING SYTEM THAT WILL GROW AND CHANGE WITH YOUR BUSINESS

Sew fabric and PVC banners – make lightbox and exhibition graphics by applying SEG (keder) – attach Velcro and webbing reinforcements to PVC banners – sew hems, pockets and feather flags –  
Sew with 1 or 2 needles



### KEY FEATURES

- ▷ Simple controls for easy, semi-automatic operation - no sewing skills required
- ▷ Versatile functions for producing different products
- ▷ Easy threading, lockstitch sewing machine – for seam security
- ▷ Easy change system available to use conveyor with other sewing or welding machines

Silicone Edge Graphics (SEG) such as  
Lightboxes and exhibition graphics  
PVC Banners  
Standard and feather Flag







## High performance welders for the toughest production demands

The T300 hot air and hot wedge welding machines combine versatility and accurately controlled operating parameters for product consistency. The T300 is available in 4 different models and is specifically tailored to your application(s). They are built for easy operation with a functional, easy-to-use operator interface and can be equipped with a variety of seam configurations to meet your specific production demands.



## The T3 Extreme is a table top welder for any size sign business

The T3 Extreme hot wedge welding machine was designed with the smaller business in mind. It will produce all the seam configurations required for the banner and sign maker. The T3 Extreme is efficient and has simple controls for consistent product construction.





## High Precision Manual Cutting Machines

At Keencut we guarantee that every cut is a perfect cut. We use our market-leading expertise and superior UK manufacturing quality to create safe, accurate and simple-to-use cutting equipment for specialist users in the sign-making, wide format printing, and picture framing industries.

We design high precision manual cutting machines for specialist tasks, developing innovative ideas that speed up your workflow and increase productivity. Our primary focus is always on your safety. Keencut cutters are engineered to protect you whilst cutting the toughest materials.

### WE SUPPLY;

- ▶ SteelTrak
- ▶ Evolution 3 Range
  - Free Hand
  - Bench Top
  - SmartFold
- ▶ Sabre Series 2
- ▶ Simplex
- ▶ Technic ARC
- ▶ Safety Straight Edge







## Keencut SteelTrak

SteelTrak is a high production machine for cutting rigid and semi-rigid materials and scoring and snapping glass and acrylic. It's ideal for cutting or v-grooving Aluminium Composite, with a fast set-up for cutting identical boards. Cutting takes minimal effort and only a few minutes of training.

With a SteelTrak, you can buy larger cost-effective boards, reduce waste, and increase quality and productivity.

### KEY FEATURES

- ▶ Cuts and finishes in a single action
- ▶ No dust or scrapings
- ▶ Cuts and V-Grooves ACM
- ▶ Easy set-up for identical boards
- ▶ Cut rigid and semi-rigid materials and scores and snaps glass and acrylic
- ▶ No programming, no power required
- ▶ Single operator
- ▶ Safety by design and 5 year guarentee



We offer a wide range of products to finish your graphics. Clear eyelets for banners that when applied on PP or PE banners are the ultimate solution for printers, as the entire banner can go to the #4 or #2 waste stream. Eyelet machines to apply clear eyelets on banners, tarpaulins, corrugated plastics.

Tools and accessories for digital printing, sign making, car wrapping. Small products that help you to make your job easier as squeegees, cutters, cutting mats, safety rulers, media racks, magnets, tool bags kits, stands holders for rigid media.

Our modular frame system allows you to build yourself the frames no matter the size without welding the pipes and to fix the banner we have hook, bungees, straps with buckle, cable ties, reusable clips.



#### WE OFFER;

- ▷ Manual and semi automatic eyelet presses.
- ▷ Media storage 1.6m - 3.2m/5m
- ▷ Ridged media transporters.





## SOYANG MEDIA

## SUSTAINABLE PRINT COLLECTION



## SUSTAINABILITY WEEK

Together, we can contribute to a world with a future for all.

### Specification

PRODUCT CODE	WIDTHS AVAILABLE	ROLL LENGTH	WEIGHT	INK COMPATIBILITY	TYPICAL APPLICATIONS
<b>ST-216 RCY</b> Nightstar	Up-to 3.2M	100M	260g/sq.m	Dye-Sub Direct & Transfer UV & LATEX	Blockout Retail Displays Tensioned Display
<b>ST-601 RCY</b> Starlight	Up-to 3.2M	100M	175g/sq.m	Dye-Sub Direct & Transfer UV & LATEX	LED Boxes, Tensioned Display Systems
<b>ST-117 RCY</b> Display Fabric	Up-to 3.2M	100M	210g/sq.m	Dye-Sub Direct & Transfer UV & LATEX	Retail Backdrops Exhibition Graphics
<b>ST-110 RCY</b> Flag	Up-to 3.2M	100M	110g/sq.m	Dye-Sub Direct & Transfer	Flags, Retail Backdrops Exhibition Graphics





Speechless....  
I can't believe  
the great instore  
deals this week!

## Specification

PRODUCT CODE	WIDTHS AVAILABLE	ROLL LENGTH	WEIGHT	INK COMPATIBILITY	TYPICAL APPLICATIONS
<b>SL-F02W</b> Banner	Up-to 5M	50M	320g/sq.m	Eco Sol, Solvent UV & LATEX	Frontlit Banners
<b>SL-F03</b> Greyback Banner	Up-to 2.2M	50M	260g/sq.m	Eco Sol, Solvent UV & LATEX	Frontlit Banners
<b>SL-M03</b> Mesh Banner	Up-to 5M	50M	170g/sq.m	Eco Sol, Solvent UV & LATEX	Wall, Building & Fence Banners
<b>SL-F06W</b> Greyback Banner	Up-to 5M	50M	310g/sq.m	Eco Sol, Solvent UV & LATEX	Indoor & Outdoor Frontlit Banners
<b>SL-F05</b> Greyback Banner	Up-to 3.2M	50M	270g/sq.m	Eco Sol, Solvent UV & LATEX	Wall Coverings Frontlit & Roll-up Banners
<b>SL-BL02</b> Blockout Banner	Up-to 3.2M	50M	380g/sq.m	Eco Sol, Solvent, Screen Printing UV & LATEX	Double Sided & Roll-up Banners
<b>SL-BL03</b> Blockout Banner	Up-to 3.2M	50M	350g/sq.m	Eco Sol, Solvent, Screen Printing UV & LATEX	Indoor Roll-up & Display Banners
<b>SL-F05BW</b> Frontlit Banner	Up-to 5M	50M	270g/sq.m	Eco Sol, Solvent, Screen Printing UV & LATEX	Indoor & outdoor Roll-up & Display Banners

## Silicone Edging

PRODUCT CODE	WIDTHS AVAILABLE	ROLL LENGTH	TYPICAL APPLICATIONS
<b>Greenstrip™</b> PVC-free keder	14mm x 3mm	152M	Banners, building wraps, facades, awnings & curtains.
<b>BTS</b>	12mm x 3mm, 14mm x 3mm	200M	Banners, building wraps, facades, awnings & curtains.
<b>Silicone</b>	14mm x 3mm	200M	Banners, building wraps, facades, awnings & curtains.
<b>Baiken TPE</b>	10mm x 250mm, 12mm & 14mm x 200mm	200M	Banners, building wraps, facades, awnings & curtains.
<b>Baiken PVC</b>	10mm x 250mm	200M	Banners, building wraps, facades, awnings & curtains.



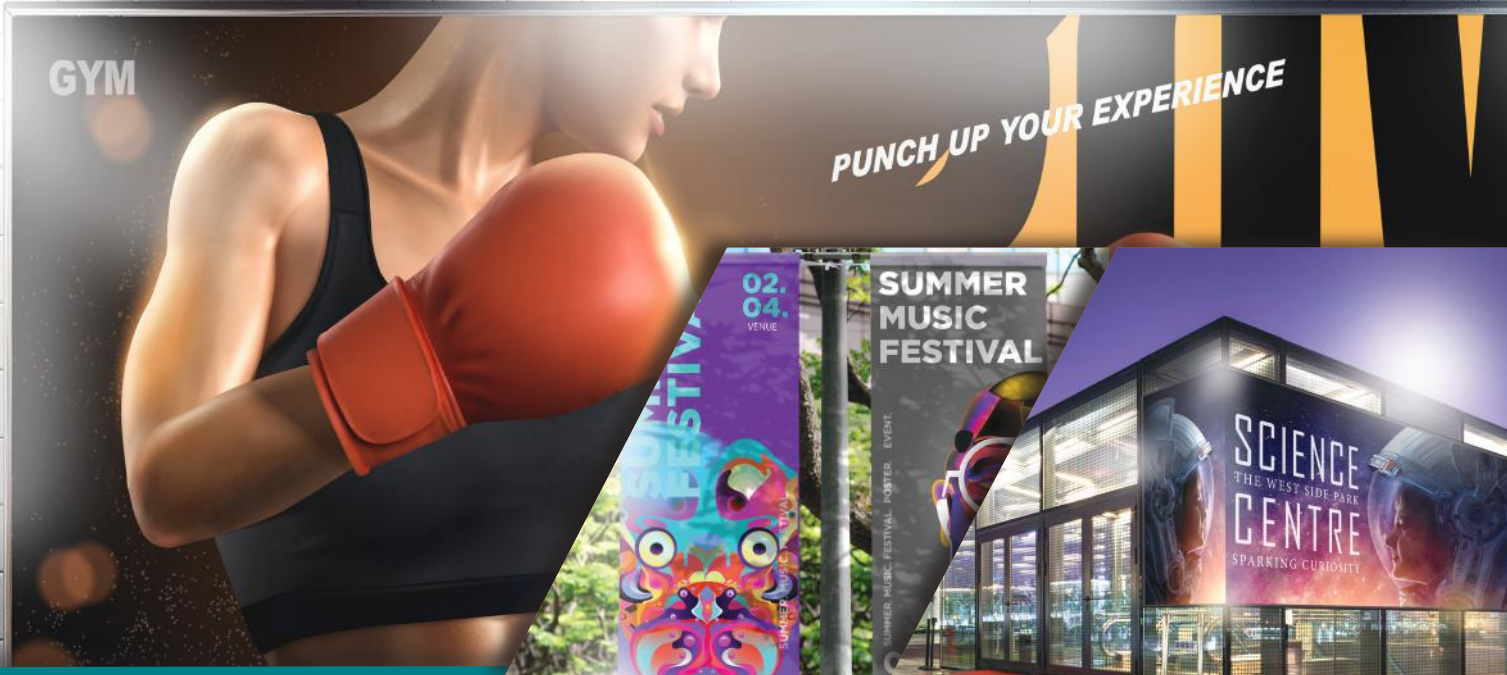
## SOYANG MEDIA

## TEXTILE PRINT COLLECTION



## Specification

PRODUCT CODE	WIDTHS AVAILABLE	ROLL LENGTH	WEIGHT	INK COMPATIBILITY	TYPICAL APPLICATIONS
<b>ST-601</b> Starlight	Up-to 5M	100M	175g/sq.m	Dye-Sub Direct & Transfer UV & LATEX	Backlit Displays, Exhibition & Retail Graphics
<b>ST-216</b> Nightstar	Up-to 5M	100M	280g/sq.m	Dye-Sub Direct & Transfer UV & LATEX	Blockout Retail Displays Tensioned Display Graphics
<b>ST-129</b> Lightbox	Up-to 3.2M	100M	260g/sq.m	Dye-Sub Direct & Transfer UV & LATEX	Light Box Displays
<b>ST-215</b> Black Backed	Up-to 3.2M	100M	230g/sq.m	Eco Sol, Solvent UV & LATEX	Exhibition & Retail Display Graphics
<b>ST-117</b> Jupiter Display	Up-to 3.2M	100M	210g/sq.m	Dye-Sub Direct & Transfer UV & LATEX	Exhibition & Retail Display Graphics
<b>ST-118</b> Mesh Flag	Up-to 3.2M	100M	115g/sq.m	Dye-Sub Direct & Transfer	Flags & Barrier Jackets
<b>ST-110</b> Popular Flag	Up-to 3.2M	100M	110g/sq.m	Dye-Sub Direct & Transfer	Flags & Retail Backdrops
<b>ST-140</b> Power Stretch	Up-to 3.2M	100M	260g/sq.m	Dye-Sub Direct & Transfer UV & LATEX	Tensioned Display Graphics
<b>ST-142</b> Power Stretch	Up-to 3.2M	100M	260g/sq.m	Dye-Sub Direct & Transfer UV & LATEX	Tensioned Display Graphics
<b>ST-301</b> Horizon	Up-to 3.1M	100M	260g/sq.m	Dye-Sub Transfer & UV	Tents, Awnings, Deckchairs & Bean bags
<b>ST-302</b> Super Tenacity	Up-to 3.2M	100M	260g/sq.m	Dye-Sub Transfer & UV	Tents, Awnings, Deckchairs & Bean bags
<b>ST-802</b> Polyester Mesh	Up-to 5M	100M	230/sq.m	Dye-Sub Direct & Transfer	Flags & Barrier Jackets
<b>ST-2163</b> Polyester Blockout Fabric	Up-to 5M	50M/100M	230/sq.m	UV	Exhibition & Retail Display Graphics



## Specification

PRODUCT CODE	WIDTHS AVAILABLE	ROLL LENGTH	WEIGHT	INK COMPATIBILITY	TYPICAL APPLICATIONS
<b>AL2-450</b> Premium Banner	Up-to 5M	50M	450g/sq.m	Eco Sol, Solvent, UV & LATEX	Frontlit/Backlit Banners
<b>PL2-510</b> Long Term Banner	Up-to 5M	50M	510g/sq.m	Eco Sol, Solvent, UV & LATEX	Long Term Outdoor Frontlit Banners
<b>B01-440</b> Short Term Banner	Up-to 3.2M	50M	440g/sq.m	Eco Sol, Solvent, UV & LATEX	Frontlit Banners
<b>BLOW-510</b> Blockout Banner	Up-to 3.2M	50M	510g/sq.m	Eco Sol, Solvent, UV & LATEX	Double Sided Banners
<b>BLOW-700</b> Blockout Banner	Up-to 3.2M	50M	700g/sq.m	Eco Sol, Solvent, UV & LATEX	Long Term Outdoor Double Sided Banners
<b>H3512-0026</b> Blockout B1/M2	Up-to 5M	50M	760g/sq.m	Eco Sol, Solvent, UV & LATEX	Exhibition banners, Retail Banners, External Banners
<b>H5551-0290</b> Panama Print	Up-to 3.2M	50M	900g/sq.m	Eco Sol, Solvent, UV & LATEX	Vehicle Curtain Sides Frontlit Banners
<b>H6006-0301</b> Backlit Light Eco	Up-to 5M	50M	500g/sq.m	Eco Sol, Solvent, UV & LATEX	Exhibition Banners, Retail Backlit banners, Flex Face
<b>MESH-1812V</b> Mesh with Liner	Up-to 3.2M	50M	380g/sq.m	Eco Sol, Solvent UV & LATEX	Scaffold Hoardings Large Format Graphics
<b>MESH-189</b> Supreme Mesh	Up-to 5M	50M	300g/sq.m	Eco Sol, Solvent UV & LATEX	Scaffold Hoardings Large Format Graphics
<b>MESH-12</b> Premium Mesh	Up-to 5M	50M	270g/sq.m	Eco Sol, Solvent UV & LATEX	Scaffold Hoardings Large Format Graphics
<b>SOFLAT FF-330</b> Non-curl Banner	Up-to 2.2M	50M	330/sq.m	Eco Sol, Solvent, Screen Print UV & LATEX	Roll-up & Portable Displays X Banner, Clip Banners
<b>SOFLAT FF-420</b> Non-curl Banner	Up-to 2.2M	50M	420/sq.m	Eco Sol, Solvent, Screen Print UV & LATEX	Roll-up & Portable Displays X Banner, Clip Banners
<b>G-tech 310</b> Pop-up Banner	Up-to 1.067M	30M	300/sq.m	Eco Sol, Solvent UV	Pop-up Panels
<b>G-tech 401</b> Pop-up Banner	Up-to 1.067M	30M	400/sq.m	Eco Sol, Solvent UV	Pop-up Panels
<b>G-tech 501</b> Pop-up Banner	Up-to 1.067M	30M	500/sq.m	Eco Sol, Solvent UV	Pop-up Panels
<b>SUNSHADE OPP</b> Perforated Window Film	Up-to 1.52M	50M	270/sq.m	Eco Sol, Solvent UV & LATEX	Window Graphics





## Specification

PRODUCT CODE	WIDTHS AVAILABLE	ROLL LENGTH	WEIGHT	INK COMPATIBILITY	TYPICAL APPLICATIONS
<b>Show Floor</b> Floor Covering	Up-to 3.2M	20M	1000g/sq.m	Eco Sol, Solvent UV & LATEX	Floor Covering
<b>Print Floor</b> Floor Covering	Up-to 4.95M	30M	1000g/sq.m	Eco Sol, Solvent UV & LATEX	Floor Covering
<b>BILD Floor</b> Floor Covering	Up-to 3.04M	15.24M	2.8kg/sq.m	UV & LATEX	Floor Covering
<b>Catwalk</b> Floor Covering	Up-to 4M	25M	900g/sq.m	Dye-Sub Direct & Transfer	Floor Covering
<b>Uni-floor</b> Floor Covering	Up-to 4M	30M	1500g/sq.m	Eco Sol, Solvent UV & LATEX	Floor Covering
<b>Polycril-GW</b> Wall Covering	Up-to 5M	50M	330g/sq.m	Eco Sol, Solvent UV & LATEX	Wall Covering
<b>Polycril-275</b> Wall Covering	Up-to 5M	50M	275g/sq.m	Eco Sol, Solvent UV & LATEX	Wall Covering
<b>WA-300</b> Wall Covering	Up-to 1.524M	50M	100 micron	Eco Sol, Solvent UV & LATEX	Wall Covering
<b>Decal Glass</b> Glass Film	Up-to 1.22M	50M	80 micron	Eco Sol, Solvent UV & LATEX	Decorative Glass
<b>Alumigraphics</b> Floor/Wall	Up-to 1.346M	45.72M	320 micron	Eco Sol, Solvent UV & LATEX	Wall & Floor Covering
<b>ST-221</b> Wall Covering	Up-to 3.2M	50M	330g/sq.m	UV & LATEX	Wall Covering

## SOYANG MEDIA

SOSTick SELF ADHESIVE VINYL



## Product Name Key

P	Permanent
R	Removable
GB	Grey Back
BF	Bubble Free
HT	High Tack

## Specification

## Monomeric Self Adhesive Laminate

PRODUCT CODE	DESCRIPTION	FINISH	WIDTHS	ROLL LENGTH
MGWP	Monomeric Gloss white P	White Glossy	1.37m & 1.52m	50m
MGWPBF	Monomeric Gloss White P BF	White Glossy	1.37m & 1.52m	50m
MGWPGB	Monomeric Gloss White P GB	White Glossy	1.37m & 1.52m	50m
MGWPGBBF	Monomeric Gloss White P GB BF	White Glossy	1.37m & 1.52m	50m
MMWRGB	Monomeric Matte White R GB	White Matte	1.37m & 1.52m	50m
MGCR	Monomeric Gloss Clear R	Clear Glossy	1.37m & 1.52m	50m
MGWHTGB	Monomeric Gloss White HT GB	White Glossy	1.37m & 1.52m	50m
MMWHTGB	Monomeric Matte White HT GB	White Matte	1.37m & 1.52m	50m
Sunshade OPP	Monomeric One Way Vision 60/40	Clear Glossy	1.37m & 1.52m	50m

## Monomeric Self Adhesive Laminate

PRODUCT CODE	DESCRIPTION	FINISH	WIDTHS	ROLL LENGTH
MGL	Monomeric Gloss Clear	Clear Glossy	1.37m & 1.52m	50m
MML	Monomeric Matte Clear	Matte Clear	1.37m & 1.52m	50m



## SOYANG MEDIA

SOSTick SELF ADHESIVE VINYL



## Specification

## Polymeric Self Adhesive Print

PRODUCT CODE	DESCRIPTION	FINISH	WIDTHS	ROLL LENGTH
PGWP	Polymeric Gloss white P	White Glossy	1.37m & 1.52m	50m
PGWPBF	Polymeric Gloss white P BF	White Glossy	1.37m & 1.52m	50m
PGWPGB	Polymeric Gloss white P GB	White Glossy	1.37m & 1.52m	50m
PGWPGBBF	Polymeric Gloss white P GB BF	White Glossy	1.37m & 1.52m	50m
PGCP	Polymeric Gloss Clear P	Clear Glossy	1.37m & 1.52m	50m

## Polymeric Self Adhesive Laminate

PRODUCT CODE	DESCRIPTION	FINISH	WIDTHS	ROLL LENGTH
MGL	Polymeric Gloss Clear	Clear Glossy	1.37m & 1.52m	50m
MML	Polymeric Matte Clear	Matte Clear	1.37m & 1.52m	50m



SOYANG MEDIA

DECAL SELF ADHESIVE VINYL



### Specification

PRODUCT CODE	DESCRIPTION	FINISH	WIDTH	ROLL LENGTH
Z3230.PE	Decal polymeric vinyl P HT PE 75 BO	White Glossy	1.37m 1.60m	50m
Z3230.BF	Decal polymeric vinyl P HT BF PE 75 BO	White Glossy	1.37m 1.60m	50m
Z3230WBG.PE	Decal polymeric vinyl P PE GB 75 BO	White Glossy	1.37m	50m
Z3231.PE	Decal polymeric vinyl P PE GB 75 BO	White Matte	1.37m	50m
Z3231.BF	Decal polymeric vinyl P HT BF PE 75 BO	White Matte	1.37m	50m
Z3232.PE	Decal polymeric vinyl P HT PE 75	Clear Glossy	1.37m 1.60m	50m



## SOYANG MEDIA

DECAL SELF ADHESIVE VINYL



## Specification

PRODUCT CODE	DESCRIPTION	FINISH	WIDTH	ROLL LENGTH
CC6000	Decal glass decor P HT 80	Frosted	1.22m	25m 50m
CC6000.BF	Decal glass decor P HT BF PE 80	Frosted	1.22m	25m 50m
Z3092WB.PE	Decal vinyl P PE 95 BO	White Glossy	1.37m 1.60m	50m
Z3122.PE	Decal vinyl P HT PE 100	White Glossy	1.37m 1.60m	50m
Z3132.PE	Decal vinyl P HT PE 100	White Matte	1.37m 1.60m	50m
Z3162N.PE	Decal vinyl P HT PE 100	Clear Glossy	1.37m	50m



SOYANG MEDIA

DECAL SELF ADHESIVE VINYL



Specification

PRODUCT CODE	DESCRIPTION	FINISH	WIDTH	ROLL LENGTH
Z3238	Decal polymeric overlaminate P HT 75	Clear Glossy	1.37m 1.60m	50m
Z3239	Decal polymeric overlaminate P HT 75	Clear Matte	1.37m 1.60m	50m
Z3460	Decal vinyl RSS dot matrix PE 100	Clear Glossy	1.37m	50m
Z3462	Decal vinyl RSS dot matrix PE 100 BO	White Matte	1.37m	50m
Z6669P	Decal overlaminate P HT 70	Clear Matte	1.37m 1.60m	50m
Z6672P13750	Decal overlaminate P HT 70	Clear Glossy	1.37m	50m





Please contact us to book your demonstration  
or order your personalised samples



Email: [hardware@soyang.co.uk](mailto:hardware@soyang.co.uk) / [media@soyang.co.uk](mailto:media@soyang.co.uk)  
[www.soyang.co.uk](http://www.soyang.co.uk)



**Soyang Europe**  
Calder House, Metcalf Drive,  
Altham, Accrington,  
BB5 5TU

Telephone: +44 (0)161 765 3400  
Email: [media@soyang.co.uk](mailto:media@soyang.co.uk)  
[www.soyang.co.uk](http://www.soyang.co.uk)



**Soyang Hardware**  
Unit 13 & 15 Meridian,  
Buckingham Business Park,  
Anderson road, Swavesey,  
CB24 4AE

Telephone: +44 (0)1954 232 564  
Email: [hardware@soyang.co.uk](mailto:hardware@soyang.co.uk)  
[www.soyang.co.uk](http://www.soyang.co.uk)