

DESTINATION *E* CRUISING
NEW ZEALAND



DESTINATION *&* CRUISING
NEW ZEALAND

Welcome to
New Zealand



● **DESTINATIONS COVERED IN THIS BOOK**

Destination **South Pacific**

*W*hen planning your trip to the beautiful South Pacific we encourage you to include New Zealand on your itinerary. Our island nation, also known by its Māori name of Aotearoa, has two main landmasses, the North and South Island, with numerous uninhabited smaller islands. New Zealand is out of harm's way from the

Northern Pacific's cyclone season, and with over 15,000km of pristine coastline, sheltered bays, stunning fjords, clear water and abundant marine life it certainly offers something for everyone. For yacht owners with a penchant for adventure; for the wanderers and the trailblazers, this is the place to point the bow.



**SOUTH
PACIFIC**
SUPERYACHTING



CONTENTS

01	Welcome to New Zealand	21	Destination BAY OF PLENTY
02	Destination SOUTH PACIFIC	25	Destination NELSON
03	Key marine events 2025 - 2026	29	Destination MARLBOROUGH
05	Central Auckland marinas and other points of interest	33	Destination QUEENSTOWN
06	NZ Millennium Cup	37	Destination SOUTHLAND
13	Destination NORTHLAND	42	REGULATIONS FOR VISITING YACHTS
17	Destination AUCKLAND	64	MARINE PRODUCTS/ SERVICES DIRECTORY

Kia Ora,

Welcome to New Zealand, a country of exceptional beauty that has long been an aspirational destination for both land and sea-loving visitors.

With around 15,000 kilometres of beautiful coastline, there is something new to discover around every corner. Our fishing and diving are world-class while onshore you'll find a huge range of unique experiences to suit any and all traveller's interest.

Already well-established as a Pacific hub for cruising yachts and superyachts with a penchant for adventure, New Zealand is also a sought-after destination for yachts requiring refit and repair taking advantage of the quality of workmanship on offer.

This publication offers a glimpse into what a yachting holiday in New Zealand is like, showcasing how sailing around our country offers more diversity in one location than any other international destination.

We look forward to welcoming you to our shores and introducing you to our world-class marine industry.





New Zealand welcomes visiting yachts to our shores

We are ready and looking forward to welcoming superyachts to the South Pacific and New Zealand. To assist you when making plans to visit New Zealand we provide the following helpful information and direct you to Section B of this publication for full details.

24-months' temporary entry of vessels

A visiting yacht is entitled to visit New Zealand for up to 24 months without the need for the yacht to be imported into New Zealand. Simply apply for a Temporary Import Entry (TIE) certificate from New Zealand Customs prior to arrival in New Zealand. (Refer to the Regulations section in this book).

Exempt Goods & Services Tax (GST) of 15%

A visiting yacht entered on a TIE may purchase goods, equipment, and services 'zero rated' of GST if the goods or services are to form part of the yacht and exported with the yacht. This also includes berthage costs, repairs or refitting work completed whilst in New Zealand.

NB: The process is simple with the GST not charged at point of purchase on production of the TIE certificate to the supplier of goods or services.

Superyacht charter allowed

Visiting superyachts, that comply with Maritime New Zealand requirements, are welcome to charter. This is best arranged through a local superyacht agent, who will process the necessary paperwork with New Zealand Customs, Maritime New Zealand, and the Inland Revenue Department.

KEY MARINE EVENTS 2025 - 2026

SAIL GP™

New Zealand Sail Grand Prix

Location Auckland

January 2025 – Saturday 18th to Sunday 19th

www.sailgp.com



Bay of Islands Sailing Week

Location Bay of Islands

January 2025 – Tuesday 21st to Saturday 25th

bayofislandssailingweek.org.nz



New Zealand Millennium Cup Superyacht Regatta

Location Auckland

February 2025 – Sunday 1st to Tuesday 4th

February 2026

www.millenniumcup.com



Auckland Boat Show

Location Auckland

March 2025 – Thursday 6th to Sunday 9th

March 2026

www.auckland-boatshow.com



The Hutchwilco New Zealand Boat Show

Location Auckland

May 2025 – Thursday 15th to Sunday 18th

May 2026 – Thursday 14th to Sunday 17th

<https://boatshow.co.nz/>



Whangarei Maritime Festival

Location Whangarei

October 2024 – Saturday 12th to Sunday 13th

October 2025 – Saturday 11th to Sunday 12th

www.whangareimaritimefestival.co.nz



NZmarine

NZ Marine Superyacht Welcome Function

Location Auckland

December 2024 – Thursday 5th

December 2025 – Thursday 4th

December 2026 – Thursday 3rd

www.nzmarine.com





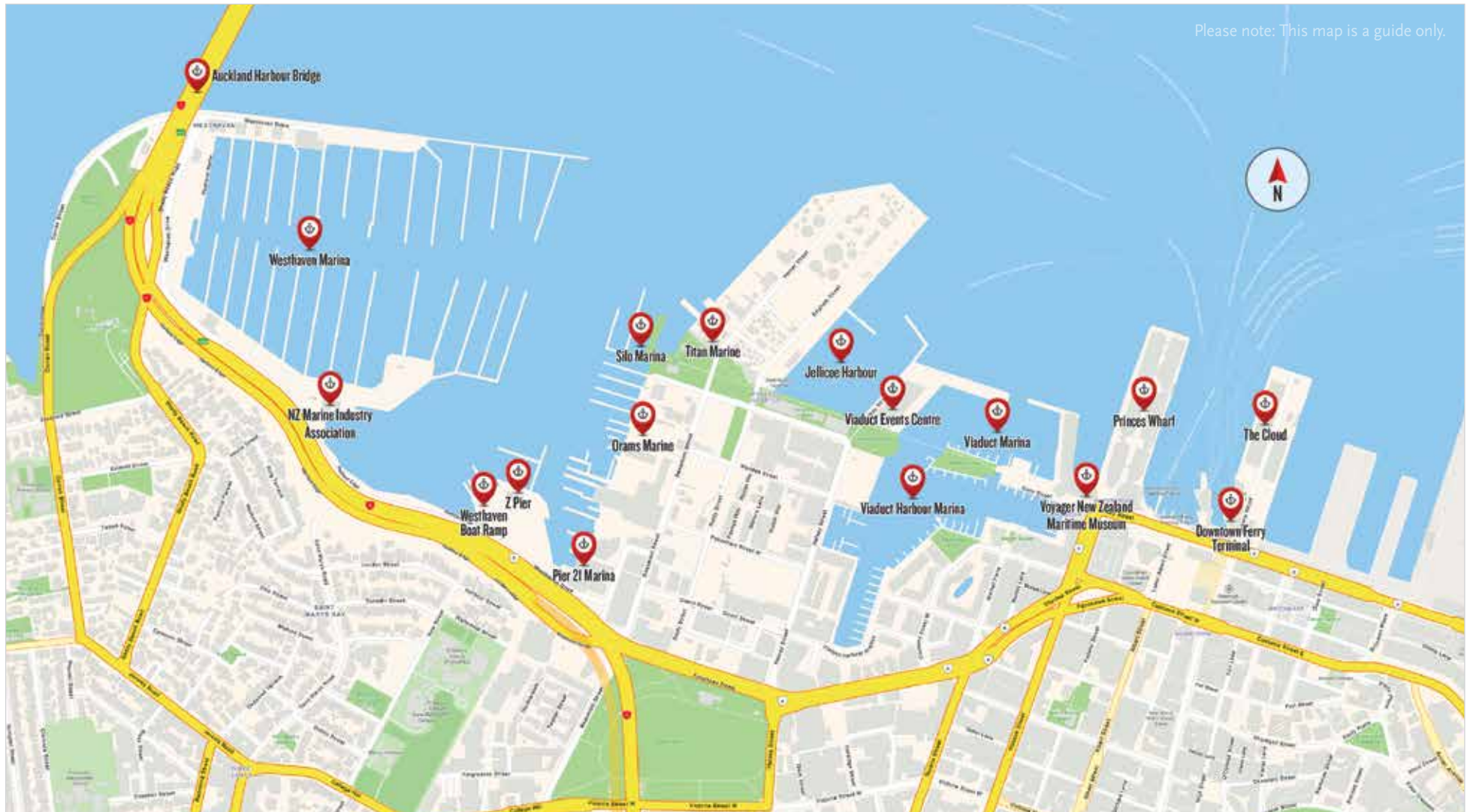
**MOANA AUCKLAND
NEW ZEALAND'S
OCEAN FESTIVAL**

WE'RE MAKING WAVES

27 Jan - 9 March 2025
Waitematā Harbour

Destination **Auckland Central marinas and points of interest**

This map covers the key central Auckland marinas, haul-out facilities, boat ramp, downtown waterfront and Ferry Terminal. For more information on New Zealand marinas refer to pages 72 to 74 in this book.





SOUTH PACIFIC'S ONLY SUPERYACHT REGATTA

Drawing attention to New Zealand's beautiful cruising grounds, skilled workforce and innovative industry, the NZ Millennium Cup showcases the best of our superyacht sector in a relaxed, recognisably-Kiwi style. A key focus of the regatta is to encourage extended cruising within the country, and we work closely with the wider industry to ensure yachts are aware of the diversity New Zealand waters present, as well as the opportunity to experience our world-leading refit and repair services.



FUTURE DATES

February 1st - 4th 2025

February 2026

www.millenniumcup.com







Credit Jeff Brown, Breed Media

"I now have the absolute best opinion of New Zealand. This event was thoroughly enjoyable, low key, great company and I will be remembering this for a long time to come."





“The spirit of the regatta is fantastic, it is an outstanding regatta, I really love the whole family we have here so thank you.”

Owner S/Y Tawera



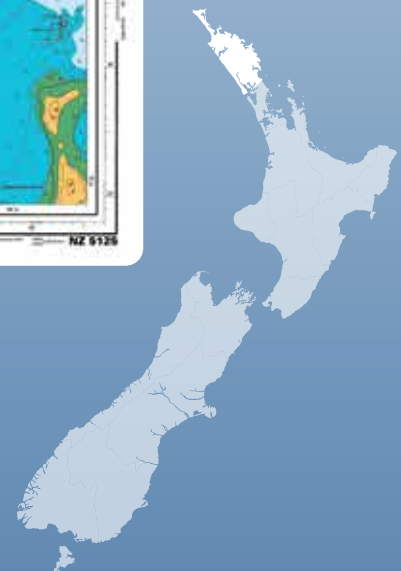
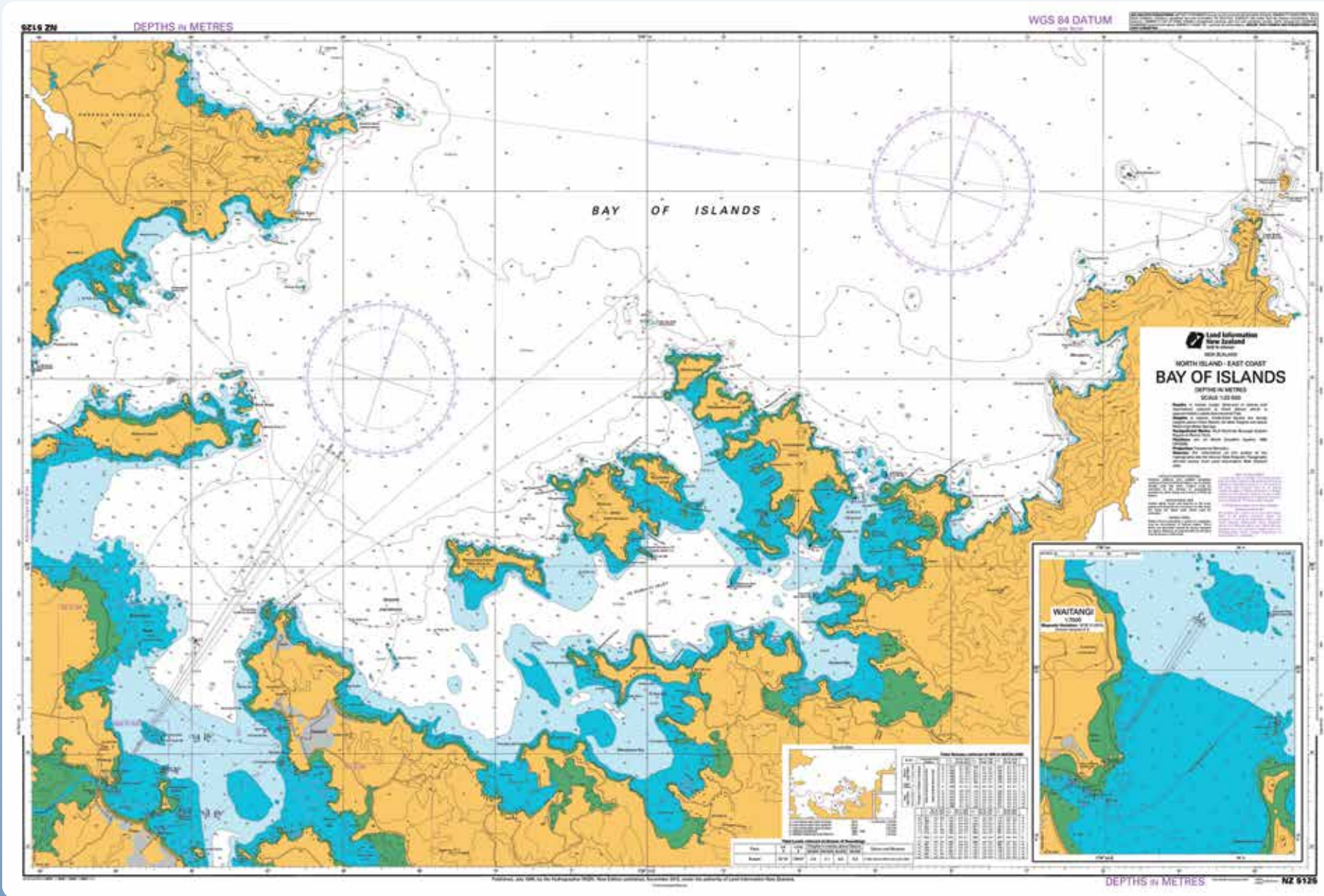




DESTINATION NEW ZEALAND

Showcases New Zealand as a premium destination for visiting yachts, crew and guests. Take the opportunity to cruise the coastline and experience all our outstanding natural environment has to offer.

Chart NZ5125 Bay of Islands. Source LINZ – not to be used for navigation.



SUB-TROPICAL Gem of the North

Destination **NORTHLAND**



Robertson Island, Bay of Islands



Sitting pretty at the top of the North Island, subtropical Northland sees lush bush tumble down to deserted white sand beaches, and holds a rich cultural heritage that has defined New Zealand. From the earliest tales of Māori discovery which speak of legendary Polynesian voyager Kupe, and as the setting for early European settlement in the Bay of Islands, to renowned 19th century warrior Hongi Hika, war leader of the Ngapuhi iwi (tribe), Northland's place in the consciousness

of New Zealanders looms large. Northland holds many of New Zealand's oldest settlements and, today, yachts' first taste of the winterless north is often Russell, a site which was once a wild hub of Southern Ocean whaling. Gracious colonial buildings spreading across the waterfront greet visitors with a friendly welcome, above a bustling beach lapped by the waters of the bay. Summer sees yachts anchor in the deep waters of Russell as they flit in and out, exploring the area's myriad islands.



*A*fter a short helicopter ride north from the international flight hub of Auckland, guests can join the yacht at anchor close to any of the uninhabited islets of the Bay of Islands. Translucent water of a startling blue greets guests as they're welcomed into a world where relaxation is the watchword. Alternatively, for an adrenaline rush they could try their chance at the sport of game-fishing.

A quick tender ride sees them taken to a deserted island beach where the crew have set up an outdoor screen for a movie night under the stars and perhaps a hangi. The traditional Māori feast is cooked in a pit where stones are heated before food is wrapped, placed inside and covered with branches, wet cloth and earth to cook. Left to cook slowly while guests tell tales of the day and bond with their local guides, the eventual feast offers a unique taste, instantly recognisable to every New Zealander.



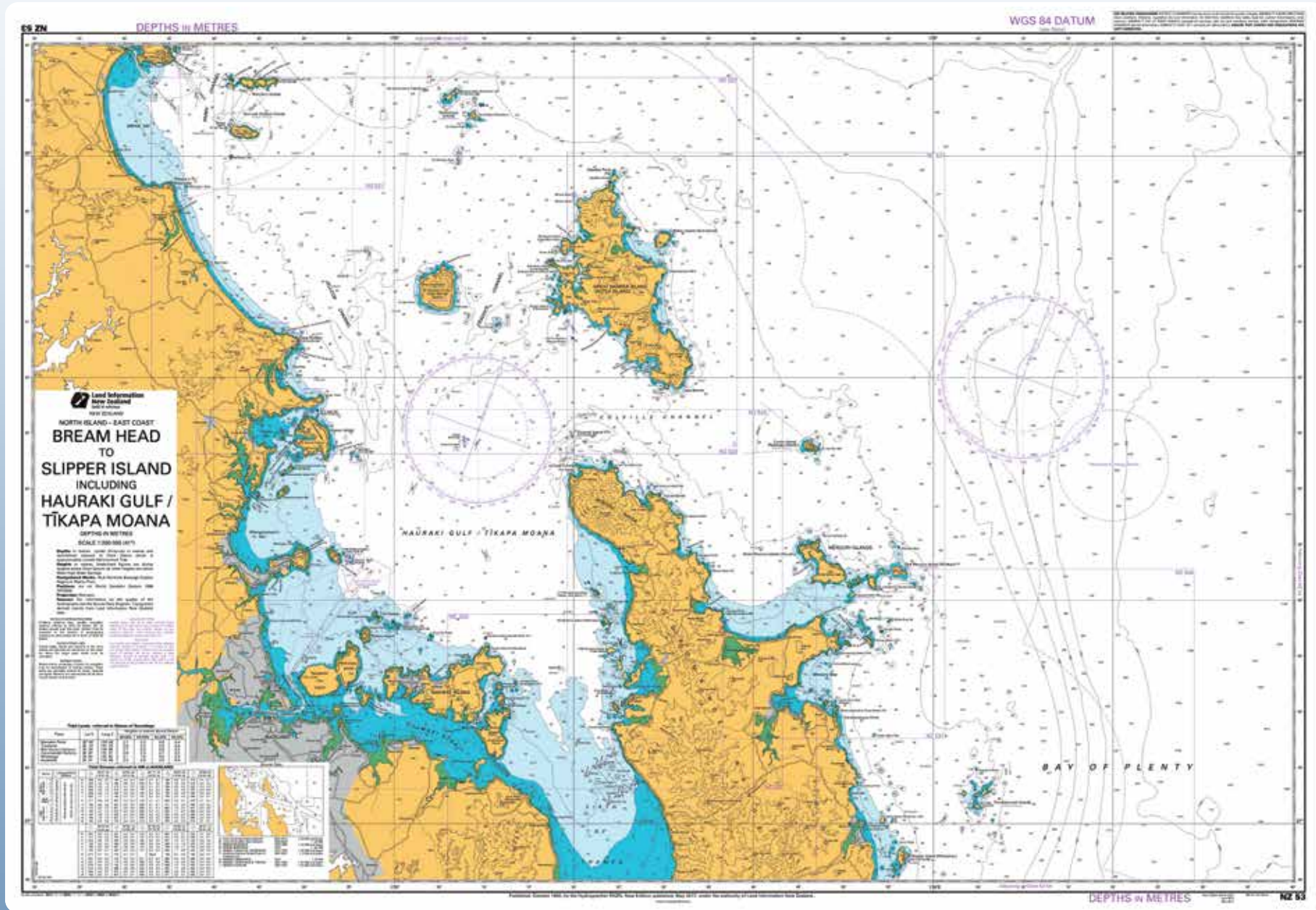
With the sound of native birdsong flowing to them from the ecologically protected islands of the Bay, guests wake to a day of exploration in this watery playground.

On land, Kauri Cliffs Lodge offers sweeping views of the Pacific Ocean over Matauri Bay. The par-72 golf course, designed by David Harman and recently renovated by Rees Jones, offers a challenging layout played across

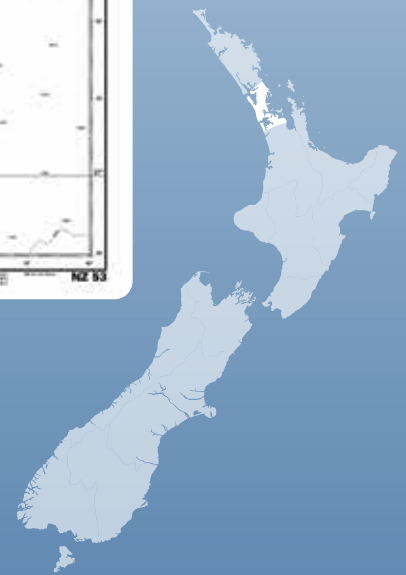
cliffs which plunge to the sea. If all that sea air inspires an appetite, the Lodge offers fine dining with private dining available on request.

Back on board, keen divers will relish the challenge presented by the Cavalli Islands. Here Greenpeace's former flagship, the *Rainbow Warrior*, lies after being scuttled to provide a fish sanctuary and dive wreck.

Chart NZ 52 Great Barrier, Hauraki Gulf and Coromandel. Source LINZ – not to be used for navigation.



The City of **SAILS**



Destination **AUCKLAND**



Westhaven Marina, Auckland

Auckland is a city defined by water. Sitting on an isthmus between the Hauraki Gulf, Manukau and Kaipara Harbours, the multitude of coves, bays and islands makes Auckland an ocean-goer's paradise.

Inner-city berths mean the heart of the city is at the end of the passerelle, while a short cruise out of the harbour gives access to wine-growing Waiheke Island, dormant volcano Rangitoto Island,

and a plethora of quiet bays to moor in. With a watery playground for a backyard, Auckland is known for having the highest number of boats per capita of any city in the world.

Back on land, Auckland combines world-class dining, shopping and entertainment with rainforests, walking trails, volcanic cones and alluring beaches all within easy reach of the city.



*W*ith the harbour on its doorstep, Auckland often plays host to internationally renowned nautical events, which in the past have included the world's largest annual, one-day sailing regatta, the 1999/2000, 2003 and 2021 America's Cups. Auckland has also proved a popular stopover port for the Volvo Ocean Race and tall ship regattas.

Culturally diverse Auckland plays host to a thriving culinary scene. Adventurous chefs draw on Pacific Rim flavours and New Zealand's exceptional local produce, seafood and grass-fed meat in crafting a dining culture that is all their own. Micro-breweries and vineyards also abound in the region, influenced by Aucklanders' love of crafting world-leading flavours in their own corner of the globe.



Just 30 minutes' cruise from downtown Auckland, Waiheke Island is in a world of its own. The temperate climate has seen vineyards flourish on the island's gentle slopes, with restaurants and cellar doors overlooking the vines and Pacific Ocean below. Waiheke is famous for its residents' relaxed, 'island time' approach, as much as it is for its exclusive private

lodges and clear emerald bays.

Further north, for an unusual experience, take the guests by tender upriver to the Matakana farmer's markets. These markets showcase the best local produce and artisanal foods, and are where Aucklanders go for relaxed weekend browsing.



CULTURAL HEARTLAND and stunning beaches

Destination **BAY OF PLENTY**



The Bay of Plenty offers a plethora of opportunities to experience Maori culture



R

eaching down the east coast of the North Island, the Bay of Plenty encompasses the white sandy beaches of the Coromandel, alongside some of New Zealand's richest pastoral lands, and sits on a seething hub of volcanic activity.

That volcanic activity sees steaming geysers shoot up out of the earth at the country's cultural heart, Rotorua, while around

them local Māori present their rich culture and traditional kapa haka (song and dance performances) to visitors.

Coastal Bay of Plenty's largest city Tauranga means 'place of rest or anchorage' in Māori and while the sparkling harbour and magnificent views make it a great place to relax and recharge, there's also plenty to keep you busy.



*G*entler, but no less impressive, are the turquoise blue waters of the Coromandel. This long coastline of idyllic bays and rolling surf beaches makes the perfect spot for a meandering cruise.

Protected rainforests tumble down the Coromandel's darkly forested

slopes, meeting with teeming blue waters filled with sea life as the result of marine reserves. The Coromandel's reputation as a marine playground is well-deserved with diving visibility to 30 metres, big game fish, orca, and black coral off the Mercury and Aldermen Islands and a multitude of coves and bays to choose from.

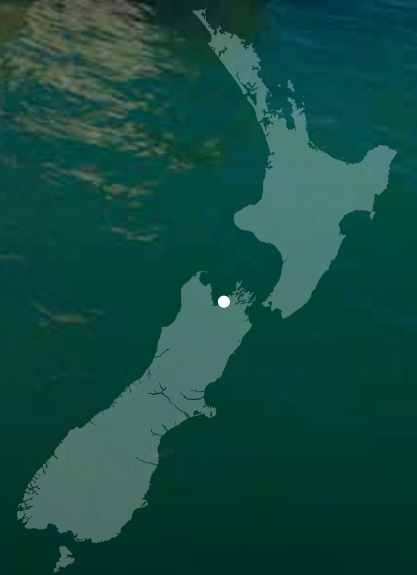


*R*otorua sits in the middle of the North Island, in the midst of a glowing green network of lakes and waterways and with a cultural life all of its own. Home to Whakarewarewa, the living Māori village, here's the place to experience traditional Māori life alongside the modern lives of members of the Tuhourangi and Ngati Wahiao people. Try a hangi, experience the waiata (songs) of the local people, then cap off the day with a white water rafting adventure.

Richly awarded Huka Lodge, near Lake Taupo, forms an idyllic escape next to the rushing waters of the Waikato River. Nestled in a green wonderland of rainforest and water, the Lodge sits on 17 acres of manicured grounds, just upstream from the mighty Huka Falls. Guided hiking, fishing, rafting, jet boating, and golf tours are all available, but the in-room massage treatments and private dining experiences give a nod to what Huka Lodge does best – this is a place to escape the world.



SUNSHINE and springwater



Destination **NELSON**



Kaiteriteri Beach, Nelson



K

nown to the locals as sunny Nelson, this idyllic spot at the top of the South Island has earned its moniker with long sunshine hours and a sheltered aspect. Abel Tasman National Park presents picture-perfect views with its spread of lagoons and islands. Cruises of the sheltered waters are set to the backdrop of native birdsong which drifts down from the protected, bush-clad hills.

Three national parks in the region teem with life, proof of the fertile soil which surrounds the area and gives rise to its reputation as a hot-bed of vineyards and artisan beer producers. Twenty-eight boutique wineries dot the region, and their cellar doors, often manned by the winemaker, are a destination in their own right.



Combine that with the fresh produce and seafood served in quaint country cafes and quiet seaside villages, and this is truly a foodie's paradise.

Head to Takaka and Golden Bay for a taste of a secluded natural paradise, where long white sandy beaches vie for your attention with incredible rock formations and riotous bush growth. Head to the banks of the Anatoki River to catch your own salmon and picnic under a shady fern, and then further north to visit a world wonder.

At the tip of the South Island, remarkable Farewell Spit, 35 kilometres long, is home to more than 90 species of wetland birds and is the largest sandspit in the world.

Challenge yourself to one of New Zealand's 'Great Walks' and take on the Heaphy Track. Stretching 82 kilometres if tackled in its entirety, the Heaphy Track offers alternating vistas of mountains, ocean and bush-clad hills. Or perhaps try a leisurely cycle tour of the area's vineyards?



*A*bel Tasman National Park's clear turquoise water has made it a favourite with visitors to New Zealand. The absence of roads in the park have made this a quiet haven, with hills ringing with birdsong and dolphins and seals regularly sighted though its waters. With over 350 working artists and craftspeople within the region inspired by its exceptional beauty, private art tours will give you the opportunity to visit Nelson's potters, artist studios and bead and glass galleries. Movie buffs will be interested to note that as well as the region serving as a backdrop to *The Lord of the Rings* films, it was also a Nelson

jeweller who crafted the movies' 'one ring'.

Head inland to explore rural New Zealand life in quaint Motueka. The Motueka River is famed for its brown trout and fly-fishing lodges, while nearby the Riwaka Resurgence is the source of the Riwaka River. The otherworldly blue spring bubbles up from deep beneath Takaka Hill, surrounded by huge marble boulders and towering ponga ferns to create an enchanted grotto that children and adults alike will love.



Into the **DEEP**

Destination **MARLBOROUGH**



Enjoy Wairau Sound's serenity as you cruise its reaches



Deep, dark inlets fall away beneath the bow, promising mystery and sealife in equal abundance. This is Marlborough, and its velvety peaks, myriad deep coves and layers of Māori legend have made it a haven of tranquillity for centuries.

Fringed with secluded beaches framed by native bush, the 1500 kilometres of coastline that is the Marlborough Sounds offer

exploration, adventure and a time to reflect, set to a backdrop of tumultuous scenery cast in shades of green and blue.

Ashore, wine-producing Marlborough continues to delight the senses with award-winning sauvignon blancs, superb aromatics, chardonnays and rich pinot noirs.



Nydia Track overlooking Pelorus Sound.

Explore Pelorus Sound, the largest of the Marlborough Sounds, where keen divers have the chance to look over the wreck of the MS *Mikhail Lermontov*. A vast array of spectacular anchorages and bays means wherever you drop anchor for the night, you'll feel surrounded by no greater crowds than that in the teeming ocean below.

Walk part of Queen Charlotte Track which wends through native bush and overlooks deep, quiet bays. After guests enjoy a well-deserved lunch, there's Ships Cove to explore, where Captain James Cook anchored five

times, and which is the perfect quiet spot to drop anchor for the night.

A quick rendezvous with a helicopter will see you whisked to the top of the Sounds' towering peaks by one of the skilled local pilots. Enjoy a mountain-top banquet, accompanied by fine wines from the region beneath you while you enjoy 360-degree views from on high. Later, as you swoop through the Sounds, you're likely to spot the whales, dolphins and seals that call this place home.



Some of New Zealand's finest vineyards are dotted throughout the region, where they quietly go about producing world-beating wines. On the long, rolling river valleys where Māori once hunted moa, the noble grape now flourishes and the region is widely considered to be the best

producer globally of sauvignon blanc. Local helicopter pilots will collect you from your yacht and deliver you straight to the cellar door for wine tasting and a personal discussion with the vintner.

Queenstown nestles on the shores of Lake Wakatipu



Year-round **PLAYGROUND**

Destination QUEENSTOWN



Challenging golf courses like Jack's Point in Queenstown make the most of the natural landscape



An alpine playground, which falls dramatically away to deep, dark lakes; Queenstown and Wanaka's raw, stunning scenery is the stuff of New Zealand postcards.

The Southern Alps jut up aggressively out of the fertile Central Otago earth, while beneath them, clear lakes hide hidden depths. The cold, crisp winters and hot, dry summers of the region mean it's a top producer of pinot noir, sauvignon blanc, riesling and pinot gris, among others, and is the world's most-southerly commercial wine region.

Thrillseekers come here for the heli-skiing, bungee jumping, jet boating and more, but the region is just as well known for its quieter activities. World-class golf courses abound and the central plateau holds more than its fair share of globally leading luxury lodges.

Adventurous Queenstown stuns on first sight, as you fly into the airport through valleys of towering mountains at window height. On the ground the wonder continues. A mecca for adrenalin-pumping adventures, Queenstown is home to the highest bungee jump in Australasia, as well as the world's biggest swing with an incredible 300-metre arc.



*T*he elegant, rustic Blanket Bay Lodge is nestled on the shores of Lake Wakatipu and surrounded by majestic alpine scenery. Guests come to Blanket Bay to escape into heli-skiing, fly-fishing, hiking, golf, and vineyard tours – all while returning each night to this lodge, repeatedly voted one of the world’s best.

Wanaka is home to three world-class ski fields, which descend to its stunning namesake lake – crystalline in summer, and reflecting the white-capped mountains above in winter. Fast and furious downhill skiing is popular here, but then so are adrenalin-pumping off-piste adventures. Don’t miss the thriving après ski scene which makes the most of the region’s well-deserved reputation for culinary excellence and fine wine.





THE FURTHEST reaches of the world



Destination **SOUTHLAND**



The soaring peaks of Milford Sound drop to deep fjords



A place of soaring heights, plunging to lakes almost half a kilometre deep, Southland displays the earth's most dramatic beauty to breathtaking effect. Here's the place to experience nature in her most primal glory.

Majestic peaks provide the platform for impossibly high waterfalls, which drop into sounds teeming with dolphins, seals and other

aquatic life. A shoreline that curls back on itself makes for a multitude of quiet bays, where the only sound is the call of native birds and the ever-constant susurrus of water.

Towering peaks give way to clear views of the Milky Way above, while to the south cold, rich waters sweep up from the Antarctic, carrying multitudes of life with them.





Deep in the heart of Fiordland National Park, explore Milford Sound, the sides of which are wreathed in tumbling rainforest. Beneath the water lies a forest of another kind, as the Sound supports the world's biggest population of black coral trees, some of which are 200 years old. According to Māori legend, Milford Sound was formed by Tu-te-raki-whanoa, a god-like figure who shaped the Fiordland coast, carving its sharp rock faces with his tōki (adze).

Some 50 nautical miles from Milford Sound lies Doubtful Sound, where penguins, fur seals and a resident pod of bottlenose dolphins will vie for your attention. Hop into a helicopter to swoop through this otherworldly paradise. You'll be swept to a high alpine landing at the top of Mt Kidd, to survey all around you, before diving through the curves and bends of the Sound below.

Remote, southerly Stewart Island has creamy sand beaches and an untouched coastline. It's also home to some of the world's largest great white sharks, and those with a penchant for adventure can get up close with the enormous predators in a cage dive. Don't miss the fresh rock lobster, blue cod and Bluff oysters sourced from the rich, cold waters which sweep up from the Antarctic.



PERFECTION
FROM **EVERY**
PERSPECTIVE



Bay of Islands

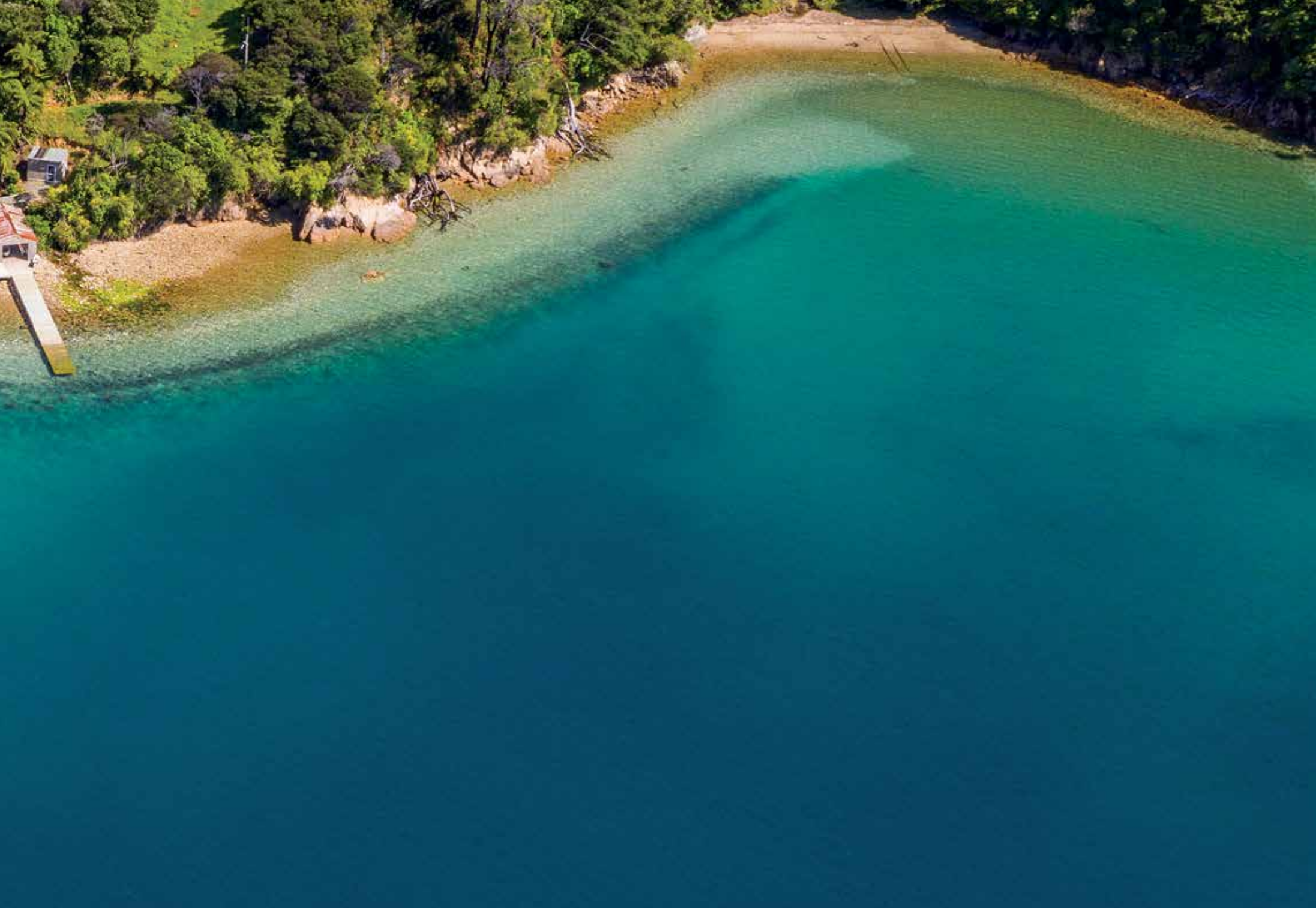
**100% PURE
NEW ZEALAND**

newzealand.com/luxury

A large glass window with a dark frame, reflecting the outdoor scene. The reflection shows the patio area and the people dining, creating a sense of continuity between the interior and exterior spaces. The window is set against a dark background, possibly the interior of a building.



Mail Boat, Marlborough Sounds



REGULATIONS FOR VISITING YACHTS

A captain's dream

Featuring a comprehensive guide on passage to New Zealand, covering everything from customs and immigration, to taxation and berthing ensuring planning your travel to Aotearoa is 'sweet as'.



SECTION CONTENTS

46

Border Requirements

57

Requirements for foreign-flagged vessels
Superyacht Charter

49

Customs Information

59

NZ Police – including firearms and drugs

53

Biosecurity

61

Taxation
Cruising marine reserves

55

Immigration Requirements

62

Island Cruising Association (ICA)
NZ Marine services

BORDER REQUIREMENTS

New Zealand Traveller Declaration

Everyone travelling into New Zealand needs to complete a declaration.

The earliest time you can submit your declaration depends on whether you are travelling by air or sea. Your declaration is linked to your passport and is checked when you arrive at the eGate or by a border officer.

There is a paper declaration form available for travellers who cannot complete it online. <https://www.travellerdeclaration.govt.nz/>

Yachts and small craft arriving in New Zealand must comply with all border entry requirements that are in place to protect New Zealand.

Prior to arrival the master of every vessel must:

- Notify border agencies at least 48 hours before entering New Zealand waters, 12 nautical miles from the coastline with an Advance Notice of Arrival (ANA). From time to time additional documents may also be required from a Health perspective.

- See NZ Customs website for up to date requirements. These documents need to be emailed to yachts@customs.govt.nz

On arrival in New Zealand the master of every vessel must:

- Display the international Q-flag upon entering New Zealand waters
- Report directly to an approved port of entry for border clearance formalities.
- Complete and provide the following required entry documentation:
 - Advance Notice of Arrival (Small Craft) (Form NZCS 340) – Form should have been emailed already to yachts@customs.govt.nz
 - Inward Report (Small Craft) (Form C1B)
 - Import Entry (Temporary) for Yachts and Small Vessels (Form C4G)
 - Passenger Arrival Card for each person on board. Each person aboard must have a valid passport containing a valid permit/visa (if required) for the intended length of stay.
 - Border Cash Report (cash or bearer-negotiable instruments in excess of NZ\$10,000 must be declared on this form)

- Last Port Clearance
- Ministry for Primary Industries Master Declaration.
- Each person on board (including crew) must pay a Border Processing Levy when they arrive and when they leave NZ. An invoice will be sent to the email address you give us on your advance notice of arrival form. Payment can be made by credit card online. <https://www.customs.govt.nz/personal/paying-customs/>
- You can find further information regarding Customs and Biosecurity procedures on the links below:
 - <https://www.mpi.govt.nz/import/border-clearance/ships-and-boats-border-clearance/yachts-and-other-recreational-vessels/>

You should also:

- Contact Taupo Maritime Radio ZLM on SSB 4125, 6215, 8291, 12290 or 16420 KHz when nearing New Zealand.
- Confirm your arrival four hours before arriving at the port of entry through Maritime Radio which maintains a Ch 16 VHF watch along the coast.
- Confirm actual arrival at the port through Ch 16 VHF.

Superyachts exceeding 500GT should also report to the local harbourmaster's office upon arrival on the NZ coast:

Northland

harbourmaster@nrc.govt.nz

Auckland

harbourmaster@at.govt.nz

Wellington

harbours@gw.govt.nz

Marlborough - Nelson

harbours@marlborough.govt.nz

Southland

kevin.osullivan@es.govt.nz



Hahei Beach, Coromandel





babcockTM

Trusted to deliver marine engineering, design, survey and refitting services

Operating New Zealand's largest marine engineering facility and dry-dock in Devonport, Auckland, Babcock offers a full range of marine engineering, design, project management and refitting services.

Dry-dock and repair berths

- › 181.4m drydock length
- › 24.3m maximum entrance breadth at high water
- › On-site repair berths

Full-service ship repair facility

- › Marine fitting and machining
- › Diesel and fuel injection
- › Hull and industrial coatings
- › Electrical fitting and electronics

Marine engineering and design

- › Naval architects; mechanical and electrical engineers

Babcock (NZ) Ltd
Devonport • Auckland • New Zealand
M. +64 2192 2335
E. shiprepair@babcockinternational.com

babcock.nz

CUSTOMS INFORMATION

The New Zealand Customs Service (Customs) acts on behalf of a number of government agencies, and is your first point of contact when arriving into or departing our beautiful shores.

When you arrive at a Customs Port of First Arrival you will be met by officers from Customs and the Ministry for Primary Industries. All people and goods must remain on board until the craft has been cleared. If arriving somewhere other than a Customs port of entry, the master of the craft must immediately report to a Customs or Police officer.

Ports of first arrival / marinas that vessels can arrive at from 01 June 2024 are:

- Opuā
- Whangarei
- Auckland (Westhaven Marina)*
- Auckland Harbour - Viaduct Marina and Silo Park Marina
- Tauranga (Vessel Works precinct)*
- Picton
- Lyttelton

* Bookings required

If this the first time you have arrived in New Zealand, or for more information about travelling to New Zealand on a recreational vessel, yacht or small craft, including mandatory documentation, please visit <https://www.customs.govt.nz/personal/travel-to-and-from-nz/recreational-vessels-yachts-and-small-craft/customs.govt.nz/recreational-vessels-yachts-and-small-craft>.

If you have any queries regarding the processing of your vessel, crew and passengers please email <mailto:service.delivery@customs.govt.nz>

If for safety reasons you need to arrive at a place other than a Customs Place, or to submit your pre-arrival documentation please contact <mailto:yachts@customs.govt.nz>

If you have any queries regarding your Biosecurity responsibilities please contact: info@mpi.govt.nz

CLIENT CODE

A Client Code is required to import and export anything to and from New Zealand that has a value of over NZD \$1000. If this is your first time importing a recreational vessel into New Zealand a Client Code will be issued to either the person in charge of the vessel or the owner of the vessel upon arrival by the officer that processes the vessel and its crew.

To apply for a Client Code you must supply the following documents:

- A copy of your/owner's passport
- Address details

TEMPORARY IMPORT ENTRY (TIE)

All goods imported into New Zealand, including yachts and small craft, are subject to Customs duty (where applicable) and goods and services tax (GST). A Temporary Import Entry (TIE) accounts for importing and later exporting goods that will remain in New Zealand temporarily. For this to be approved the processing officer must be satisfied it is the intention of the importer that the vessel remain in New Zealand temporarily and that the vessel will not be advertised for sale in New Zealand.

Non-New Zealand Residents

May qualify for a TIE that is approved for a 24-month period.
Security is the document C4G (explained below)

New Zealand Residents

Qualify for a TIE that is approved for no more than 12 months.
A financial security equal to the duty and GST payable on the vessel must be paid to Customs and will be refunded when the vessel is exported in compliance with the expiry date of the TIE.
Financial security is accepted in the following forms:

- A cash payment / deposit into Customs account, or
- A bank guarantee from a New Zealand based bank.



Mountain biking, Redwood Forest, Rotorua

STCW BASIC TRAINING

TRAINING4SAFETY.CO.NZ

30 KIOREROA ROAD,
WHANGĀREI

09 430 0498



TRAINING4SAFETY®



A DIVISION OF BUILDING & FIRE SERVICES



MAST ACADEMY

NEW ZEALAND

Delivering excellence in training
to ensure a highly-skilled
and experienced workforce
for the future of the marine
and boatbuilding industries
in Aotearoa, New Zealand

mastacademy.com

How to apply for a TIE

To apply for a Temporary Import Entry (TIE) you must supply the following documents along with your Advanced Notice of Arrival (ANA), 48 hours prior to arriving in New Zealand:

- **A copy of your or the vessel owner's passport.**
- **Your Client Code.**
- **Evidence of the value of the vessel in the form of**
- **Bill of Sale, or**
- **Purchase and Sale Agreement, or**
- **Insurance document for the vessel, or**
- **Valuation from a Registered Marine Surveyor**
- **A copy of the vessel's registration.**

Non-New Zealand Residents

If you have supplied all correct documentation 48 hours prior to your arrival, upon arrival you will be provided with, and required to complete and sign the Customs form C4G - Temporary Import Entry for Yachts and Small Craft. This document becomes the security on your vessel. The form C4G will be provided to you by the Customs officer that processes your arrival and, by signing the declaration on the form you agree that if your vessel doesn't leave New Zealand by the stated date Customs charges will be paid and the vessel permanently imported, or the vessel may be seized.

New Zealand Residents

Upon arrival you will be provided with either a deposit request letter or an NZCS 608 form. Guarantee for payment of sums due to the New Zealand Customs Service. Your vessel will not be permitted to leave the Customs Controlled Area until payment of the security deposit has been confirmed by Customs. This can take up to 24 hours after payment has been made and it is therefore beneficial to organise the deposit or bank guarantee prior to your arrival to avoid any delays.

For any further information regarding qualifying for a Temporary Import Entry (TIE), obtaining a TIE, requesting a TIE extension, TIE's for chartering and permanently importing your yacht please head to <https://www.customs.govt.nz/personal/travel-to-and-from-nz/recreational-vessels-yachts-and-small-craft/>

Requesting an extension to your TIE

When importing a vessel into New Zealand temporarily you are obligated to export it by the agreed date or permanently import it if you wish to keep the vessel in New Zealand past that date.

Extensions are only granted in exceptional circumstances such as:

- **Extensive repairs or maintenance have run over the predicted timelines for reasons beyond the control of the owner which affects the small craft's safety.**
- **Serious illness or injury to owner or immediate family.**
- **Other exceptional circumstances.**

For an extension request, please send Customs an application including:

- **A copy of the owner's passport, evidence of the value of the vessel and evidence of the registration of the vessel**
- **The reason for your application.**
- **Any supporting documentation e.g. medical certificates if a medical condition prevents departure.**
- **Letters or contracts of support from local**

industry if you are having a refit undertaken. This should include the expected time-frame.

- **If completing the refit yourself, a copy of a detailed work plan of the work to be undertaken i.e. structural, cosmetic, essential repairs etc. (with photos if possible), and an expected time-frame for completion.**
- **Confirmation that your passport visa is current, and if you have made application to extend your visa or the result of that application.**
- **A copy of the 'yellow' form issued to your vessel on arrival.**

Customs will consider each application for a TIE on a case-by-case basis. The more information you supply the easier it is for Customs to make a fair and reasonable assessment of your application and will ensure your application is processed with little delay: service.delivery@customs.govt.nz

For further information, see the New Zealand Customs Service website: <http://www.customs.govt.nz>

To get in touch, contact: Customs National Contact Centre: 0800 4 CUSTOMS (0800 428 768)

Email: service.delivery@customs.govt.nz



A traditional Māori greeting



THE SUPERYACHT HUB OF THE SOUTH PACIFIC

Award-winning work in the region's most comprehensive refit yard.

ORAMSMARINE.COM



CONFIDENCE AT SEA

— A tradition of building quality aluminium vessels —

Circa Marine is one of New Zealand finest interior refit specialists and aluminium boat builders, undertaking vessel refits and refurbishment to superyacht standard, as well as producing world class ocean going motor yachts to 40m.

Anyone considering a major refit or new build of any vessel should talk to the team at Circa Marine.

For personal confidential service
contact enquiries@circamarine.co.nz

BIOSECURITY

QUARANTINE CLEARANCE

Ministry for Primary Industries (MPI)

All vessels travelling to New Zealand (including pleasure craft and superyachts) need to meet certain border requirements to help protect New Zealand's environment, economy and people from imported pests and diseases.

Biosecurity clearance

New Zealand has many beautiful marine environments and we need to protect them. If you wish to stay in the country for an extended time and be able to sail freely in our waters, we need to make sure your vessel is free of harmful pests and diseases. Find out about our biosecurity requirements.

Getting full biosecurity clearance

Recreational vessels (yachts and leisure craft) will need a full biosecurity clearance. A full clearance allows you to sail freely in New Zealand waters and remain in the country. It involves an inspection of the vessel by an MPI officer and removal – for disposal or treatment – of all risk goods including prohibited foods and garbage.

If any signs of pests are found on board, they will be treated. We've created a step-by-step process to help you prepare for your biosecurity inspection. Follow the steps as detailed below:

<https://www.mpi.govt.nz/import/border-clearance/ships-and-boats-border-clearance/yachts-and-other-recreational-vessels/>

PROHIBITED FOODSTUFFS & GOODS

Full information on arriving into New Zealand and biosecurity clearance is at:

<https://www.mpi.govt.nz/import/border-clearance/ships-and-boats-border-clearance/>

The following goods are prohibited entry to New Zealand due to the risk of them carrying pests or disease that could harm New Zealand's

environment or agricultural and horticultural industries. You must declare that you are carrying these goods on your arrival documentation. Failure to declare biosecurity-risk goods will result in an instant fine or possibly prosecution.

Foodstuffs:

Have all foodstuffs ready to present to the Quarantine Officer. Foodstuffs that pose a biosecurity risk will be removed and disposed of. This can include: Meat products (including poultry), dairy products, fresh fruit and vegetables, eggs, honey, seeds and nuts. Restrictions may apply to some processed foods.

Plant items:

Live plants or roots/cuttings/seeds etc.

Endangered, threatened or exploited species:

E.g. ivory, tortoiseshell, whalebone carvings, cat skins, crocodile skin products, horns, tusks, wooden artefacts including wooden carvings, shields, spears, basketware, cane and bamboo, dried flowers. These items will be inspected and may require treatment at the owner's expense.

Pets:

In general, pets cannot be landed in New Zealand or kept on board a vessel in New Zealand territorial waters. Some exemptions may be granted (for cats and dogs – birds are not permitted at all) where prior application has been made to MPI and the person in charge of the animal has agreed to meet conditions set.

Full information is at:

<https://www.mpi.govt.nz/bring-send-to-nz/pets-travelling-to-nz/bringing-cats-and-dogs-to-nz/bringing-cats-and-dogs-to-nz-on-vessels/>

(Please note that some breeds of dogs are not permitted in New Zealand, and there are also a number of Customs requirements to meet: See the Clearance of Cats and Dogs Fact Sheet)

It is advisable to make any application to MPI well in advance of the voyage to New Zealand. For planning the biosecurity management of your cat or dog make early contact via email: animalimports@mpi.govt.nz



Canyon swing, Shotover Canyon, Queenstown

RAISING THE BAR ON ADVENTURE



Ultimate manoeuvrability, shallow water accessibility, speed and uncompromised safety make our waterjets the perfect partner for all on and in water pursuits.

www.hamiltonjet.com



HamiltonJet

HEALTH

Diseases requiring quarantine of individuals in New Zealand

Visiting yachts must report any serious illness or suspected quarantinable disease to Health New Zealand when on voyage to New Zealand, or to the NZ Government officials clearing the vessel on arrival.

The Advance Notice of Arrival, the Maritime Declaration of Health, and the No Change in Health Status information must be submitted in order for a ship to be granted quarantine clearance (pratique).

<https://www.tewhatauora.govt.nz/health-services-and-programmes/border-health/maritime-border-control/requirements-for-ships-to-receive-pratique/>

For further questions contact Health New Zealand:
mailto: info@health.govt.nz

Phone: +64 4 496 2000 or check the website for health contacts based around New Zealand.

<https://www.tewhatauora.govt.nz/corporate-information/our-health-system/health-sector-organisations/public-health-contacts>

BIOFOULING REQUIREMENTS TO PROTECT NEW ZEALAND FROM MARINE PEST INVASIONS

Biofouling management

Marine pests and diseases introduced to New Zealand on vessel hulls (biofouling) are a threat to our marine environment and resources. All vessels arriving in New Zealand must provide evidence of biofouling management prior to arrival.

Yachts and recreational vessels

If you're bringing a yacht or recreational vessel into New Zealand, you need to meet the requirements of the Craft Risk Management Standard for Vessels (CRMS) for Biofouling. Find out the requirements and how to meet them: <https://www.mpi.govt.nz/import/border-clearance/ships-and-boats-border-clearance/biofouling/yachts-and-recreational-vessels/>

If you have further questions about biofouling requirements for yachts and recreational vessels, email standards@mpi.govt.nz

IMMIGRATION REQUIREMENTS

Customs will provide immigration and emigration services on arrival and departure. To understand what steps to take before you travel to New Zealand, please click on the link below:
Before you travel | New Zealand Traveller Declaration <https://www.travellerdeclaration.govt.nz/before-you-travel/>

IMMIGRATION

Immigration New Zealand visa requirements

For information on visa requirements for non-charter or charter yachts, read the immigration instructions. <https://www.immigration.govt.nz/opsmanual/#34307.htm> You can undertake a quick check on the Immigration New Zealand website to find out whether or not you need a visitor visa. <https://www.immigration.govt.nz/ImmigrationNewZealand>

The following links to information on Immigration New Zealand website may be of interest to you:

- Guide for visitors arriving by yacht: <https://www.immigration.govt.nz/documents/forms-and-guides/inz1083.pdf>
INZ 1083 — Guide for Visitors Arriving by Yacht (immigration.govt.nz)
- Overview of visas for visitors arriving by yacht: <https://www.immigration.govt.nz/new-zealand-visas/visas/visa/travelling-by-private-yacht-or-aircraft-visitor-visa>
Private Yacht or Plane Visitor Visa | Immigration New Zealand
- A list of the visa-waiver countries: <https://www.immigration.govt.nz/new-zealand-visas/preparing-a-visa-application/your-journey-to-new-zealand/before-you-travel-to-new-zealand/visa-waiver-countries>
Visa waiver countries and territories | Immigration New Zealand
- Information for crew and owners of superyachts: <http://www.immigration.govt.nz/opsmanual/34308.htm> www.immigration.govt.nz/opsmanual/34308.htm



Lost World Cave, Waitomo



MAKE VESSEL WORKS YOUR NEXT PORT OF CALL



With a 350-tonne mobile vessel hoist, deep water access, and 6,300sqm of hardstand, **Vessel Works** is quickly becoming the destination of choice for commercial and recreational boat owners looking for great service, reasonable rates, and the freedom of an open yard.

Vessel Works is at the hub of a world-class network of marine specialists based on-site and locally. Our open yard allows the flexibility of unlimited contractor access to complete a project with contractors of your choosing. Experience the **Vessel Works** difference today.

P: +64 7 577 7270
E: INFO@VESSELWORKS.CO.NZ
vesselworks.co.nz

 [vesselworks](https://www.facebook.com/vesselworks)
 [vesselworks.nz](https://www.instagram.com/vesselworks.nz)

FACILITIES

- Haulout & Launch
- Refit Wharf
- Floating Berths
- Place of First Arrival
- Transitional Facility
- Open Yard



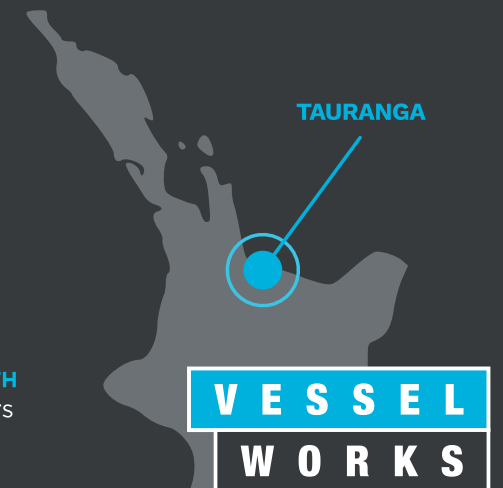
MAX LIFT
350 tonnes



MAX LENGTH
50 meters



MAX WIDTH
11.5 meters



- Extending your visitor visa:
<https://www.immigration.govt.nz/new-zealand-visas/already-have-a-visa/my-situation-has-changed/visit>
Visit | Immigration New Zealand
- Extending your stay to carry out maintenance and repairs:
<https://www.immigration.govt.nz/opsmanual/#34307.htm>

For further help contact:

Immigration New Zealand Contact Centre

Tel +64 9 914 4100

Tel 0508 558 855 (06:00-22:00 NZT Monday -Friday)

Web <https://www.immigration.govt.nz/about-us/contact>

REQUIREMENTS FOR PLEASURE CRAFT VISITING NEW ZEALAND (NOT CHARTERING)

The following information is accurate at the time of publication and is guidance only. It is not intended to be a substitute for the law or legal advice. To ensure compliance, please discuss requirements specific to your circumstances with an accredited superyacht agent listed in this directory or through <http://www.nzmarine.com/> and refer to the current version of the Maritime Transport Act 1994 at: www.legislation.govt.nz and the rule at: www.maritimenz.govt.nz/rules

Ships are considered to be pleasure craft and not commercial ships if they are:

- not used for hire or reward
- used exclusively for the owner's pleasure or as the owner's residence
- not operated or provided by a business.
- If the ship is operated or provided by a business, an exemption from commercial charter requirements (which must identify the owner) may be applied for through Maritime New Zealand.

The term 'pleasure craft' is defined in Section 2 of the New Zealand Maritime Transport Act 1994 (MTA). To check the full definition in the MTA to determine whether your ship is operating as a pleasure craft or a commercial ship, see: <http://www.legislation.govt.nz/act/public/1994/0104/latest/DLM334667.html>

Pleasure craft are not subject to New Zealand survey or certification requirements in respect of design, construction, or equipment. The skipper and crew are not required to hold commercial qualifications. However, pleasure craft are still subject to broader operating requirements and restrictions as set out below under the other applicable requirements heading, as well as any crewing or skipper requirements applicable by virtue of the ship's flag state.

SUPERYACHT CHARTER ALLOWED

A visiting superyacht may be able to be used for commercial charter for up to 65% of the total period the foreign flag yacht is visiting New Zealand. Special provisions apply to gain regulatory consent from Maritime New Zealand, NZ Customs, and Inland Revenue Department.

For more information about how New Zealand's domestic laws and regulations apply to your vessel, and whether exemptions from those laws and regulations may be sought, please consult an accredited superyacht Agent listed in this directory or through <http://www.nzmarine.com/>



Mt Maunganui, Bay of Plenty

A NETWORK LIKE NO OTHER

Worldwide coverage. Local expertise.



Four Seasons in One Day, The World in One Country.

Catalano Shipping Services New Zealand, Leaders in Superyacht Support.

We make it easy and surpass client expectations, just ask our clients.

We look forward to working with you across the Pacific.



AGents by Catalano

Ph/Whatsapp +64 21 409 802 duthie@catalanoshipping.com

www.catalanoshippingpacific.com



OTHER APPLICABLE REQUIREMENTS FOR SHIPS IN NZ WATERS

Marine protection areas

Marine protection areas All ships must take note of the marine protection areas. Please see Marine Protection Rules Part 190: Mandatory ships routing at: <https://www.maritimenz.govt.nz/rules/all-rules/marine-protection-rules-part-190/>

NAVIGATION SAFETY AND COLLISION PREVENTION RULES

Maritime Rules Part 91: Navigation Safety Rules

Part 91 sets out the basic navigation safety rules applying to New Zealand waters. Part 91 requires carriage of personal flotation devices (PFDs) on board recreational craft and makes the wearing of PFDs mandatory in certain circumstances, such as the current rule 91.4(6). For more information, see: <https://www.maritimenz.govt.nz/rules/all-rules/maritime-rules-part-91/>

Maritime Rules Part 22: Collision Prevention

Part 22 incorporates the requirements of the Convention on the International Regulations for Preventing Collisions at Sea 1972. Part 22 provides the 'Rules of the road' for ships. Also included are the standards for the installation, performance and use of lights for collision avoidance, and the sound and light signals used for the communication of safety information. For more information, see:

<https://www.maritimenz.govt.nz/rules/all-rules/maritime-rules-part-22/>

Regional Council Bylaws – including Navigation Safety Bylaws

Regional councils may also make bylaws for the purposes of maritime safety in their regions. Contact regional councils and harbourmasters for local bylaws and restrictions.

NZ POLICE – INCLUDING FIREARMS & DRUGS

Drugs and medication

Do not bring illegal drugs into New Zealand. If you need to bring prescription medication that contains narcotics, carry a doctor's certificate saying the medication is necessary, and is being used under doctor's instructions. We recommend the medicines be kept in their original pharmacy container with label, and you should not have in excess of a three month supply. Doctor's prescriptions are also needed to obtain certain drugs in New Zealand. <http://www.medsafe.govt.nz>

Firearms

New Zealand is an unarmed society and has strong penalties for breaches of its Arms Act. New Zealand Police are routinely an unarmed police force.

Government enforcement agencies, except Police, do not carry firearms.

It is illegal to be in possession of any firearm or unlawful weapon without lawful, proper and sufficient purpose.

Vessels entering New Zealand waters are required to declare all firearms and weapons on board to Customs. It is illegal to bring firearms and restricted weapons into New Zealand waters with the intention to land, or to actually land, those firearms and/or restricted weapons.

These offences are punishable by imprisonment. <https://www.police.govt.nz/advice-services/firearms-safety-fsa>

Vessels entering New Zealand waters will be expected to surrender their firearms and restricted weapons to the Police. Police will secure those items surrendered and return them when the vessel departs New Zealand waters.

Handguns are restricted to approved licence holders in New Zealand. Other firearms may be locked into a secure enclosure and sealed on board if under the control of a New Zealand Firearms Licence holder of the correct category or removed and secured by the New Zealand Police for safe keeping.

New Zealand Police

General Enquiries

Tel +64 9 302 6558

Email: information@police.govt.nz

Web: <http://www.police.govt.nz>



Canterbury Plains, Canterbury



OCEANIA MARINE SHIPYARDS

Delivering the refit service that superyachts expect

www.oceaniamarine.co.nz

TAXATION

Superyachts and other visiting pleasure craft non-resident crew usually don't pay income tax.

If you're a non-resident crew member of a pleasure craft, you won't have to pay income tax if:

- you perform services for a person who is not resident in New Zealand, and
- the pleasure craft is a temporary import under the Customs Act, and
- the pleasure craft is not owned by a New Zealand resident or a controlled foreign company, and
- you are not present in New Zealand on more than 365 days in any two-year period, and
- you are not otherwise a NZ tax resident under NZ tax rules, and
- you are not in New Zealand unlawfully

If unclear on these rules please check through a local tax adviser or yacht agent.

Find out more in the Visitor's Tax Guide (IR294) or go to Immigration New Zealand's website www.immigration.govt.nz

Taxation of income of crews for charter yachts

If the country of residence of the employer does not have a Dual Tax Agreement with New Zealand, the employment income will be exempt from tax if they stay in New Zealand for 92 days or less, the New Zealand employment income is taxable in their own country of residence, and the services performed are on behalf of a person who is not a resident of New Zealand.

Goods and Services Tax

A visiting yacht entered on a 'Temporary Import Entry' may purchase goods 'zero rated' of GST if the goods are to form part or equipment for the yacht for safe navigation and exported with the yacht. Pleasure yachts may enter New Zealand under Temporary Import Entry, attracting GST at zero rate

and no duty (see New Zealand Customs above). For the latest information on taxation regulations please contact the Inland Revenue or visit their website.

CONTACT:

Inland Revenue Dept

Tel (NZ) 0800 377 774
Fax +64 9 377 1159
Web: www.ird.govt.nz
Or www.ird.govt.nz/international/

CRUISING MARINE RESERVES

You are welcome to visit New Zealand's marine reserves

Information on marine reserves and the conditions regarding access and activities within them can be found on the Department of Conservation website: <https://www.doc.govt.nz/nature/habitats/marine/marine-reserves-a-z/>

Poor Knights Islands - an internationally recognised icon

All visiting pleasure craft less than 45 metres are welcome to visit the Poor Knights Islands – vessels over 45 metres can apply for an exemption from the rules which will be considered by Maritime New Zealand. Each case will be considered on its own merits, taking into account the criteria in the Maritime Transport Act as well as the particular environmental threats to each area and the purpose for which the Areas to be Avoided (ATBA) was established.

<https://www.whangareinz.com/Discover/Destinations/Poor-Knights-Islands>

Access to the Three Kings Islands areas, and restrictions for yachts greater than 45 metres

The Three Kings Islands and Poor Knights Islands are Areas to be Avoided (ATBA) designated by the International Maritime Organization (IMO) under Chapter V of the SOLAS Convention in order to



Omarama, Canterbury



protect the sensitive marine environment from the impacts of shipping. Entry to Three Kings ATBA is prohibited to any vessel of 500 gross tonnage or more. The ATBAs are given effect in New Zealand law through Marine Protection Rules Part 190, which define the extent of each area.

The ATBA at the Three Kings Islands and Poor Knights is within the Northland Region with navigational safety within the area administered by the Northland Regional Harbourmaster.

<https://www.doc.govt.nz/nature/habitats/offshore-islands/northland-offshore-islands/>

The accredited superyacht agents listed in this directory (Section C) are familiar with completing all procedures and can assist with the necessary applications for approval to visit marine reserves.

ISLAND CRUISING ASSOCIATION (ICA)

CRUISING THE SOUTH WEST PACIFIC

Check out Island Cruising's comprehensive knowledge-base for cruising boats including entry details to every port in the south west Pacific – entry details, clearance procedures, and costs, what to expect and where to go. www.islandcruising.nz

THE ISLAND CRUISING SAIL SOUTH TO NEW ZEALAND RALLY

Make New Zealand your choice for the cyclone season – consider joining a cruising rally from the Pacific Islands to New Zealand.

The rally departs from all major ports in the SW Pacific for Opuia in New Zealand's magical Bay of Islands. Boats joining the rally are assisted with weather info, resources and planning tools to help make the passage to New Zealand as easy as possible.

www.islandcruising.nz/upcoming-rallies

NZ MARINE INDUSTRY SERVICES

Providing solutions and refit strategies meeting Owner and Captain expectations

'We chose New Zealand after considering a combination of value and quality of work, equal to the world's best.'

– Quote from 49-metre superyacht captain.

New Zealand is strategically positioned as the South Pacific hub, offering a total package including refit, repairs, service and maintenance.

With New Zealand rated as one of the world's leading tourism destinations, enjoy the added value of fantastic cruising from the northern Bay of Islands, Auckland's Hauraki Gulf, to the spectacular southern sounds and Fiordland.

The New Zealand Marine Industry Association comprises a range of members with regional clusters covering Northern, Auckland, Central and Southern locations. Attention to detail backed by hands-on management, a skilled workforce, and an industry-approved code of practice equates to providing world-class services and refits. Dedicated craftsmen display a passion for excellence, with results rivalling New Zealand's award-winning new builds.

Search the <http://www.nzmarine.com> Directory to find everything you need before or during your visit, with over 500 NZ Marine Industry member companies including New Zealand's leading designers, builders, and marine sales and service companies.

Many of these member companies are profiled in Section C of this book.







MARINE PRODUCTS/ SERVICES DIRECTORY

Search no more!

Provides a comprehensive directory of marinas and haulout facilities. This section also offers suppliers for New Zealand's world class capabilities in refit, maintenance, products and services.



DIRECTORY CONTENTS

68

PRIMARY CONTRACTORS

Owner representation,
refit co-ordination and management

71

YACHT AGENTS

Support services including providores,
yacht supplies, crew placement and charter

72

MARINAS AND MOORINGS

Berthage, marine services,
drystack and haul-out facilities

75

BOAT BUILDERS AND SHIPYARDS

Refits, maintenances, modifications, conversions,
repairs, haul-out, hardstand and drydock services

77

CONSULTANCY

Naval architects, designers, engineering
consultants, and composites suppliers

79

ELECTRICAL REPAIR AND SUPPLIES

Electrical design and installation,
communications, AV and IT specialists

80

ELECTRICAL AND ELECTRONIC SERVICES

Navigation, electronics, and entertainment

81

ENGINEERING

Supplies, engine supply and installation,
fittings and fabrication, hydraulics, generators,
electroplating, and maintenance

83

ENGINES

Repairs, maintenance, service, overhaul
and repower

85

INTERIOR

Fittings, furnishings and joinery manufacture,
repairs, modifications and maintenance

86

MASTS AND SAILS

Covers, battens and rigging

87

PAINTING

Coatings supply and services, antifouling
and related products and services

88

SAFETY

Equipment & systems (training, life rafts,
lifesaving equipment and appliances)

89

TENDERS

RIBS, tenders – service and supply

90

OTHER SERVICES

Crew uniform, legal services, crew placement, bunkering,
providores, freight services, decking and fenders

PRIMARY CONTRACTORS

AGents by Catalano

Ph: +64 21 409 802

duthie@catalanoshipping.com
www.catalanoshippingpacific.com



Catalano Shipping – Aotearoa / New Zealand Office. Leaders in superyacht support, we are well placed to handle your visit to New Zealand and refit. Our cost-efficient in-house experts will make sure your project's supply chain runs smoothly. With our office situated beside one of Auckland's busiest superyacht refit yards and Silo Marina, we offer a full range of management services from tax exemptions, permits, customs support, refits and general boat supply across NZ and the Pacific. We make it easy and we surpass expectations, just ask our previous clients. AGents by Catalano – A worldwide network like no other. We look forward to working with you across the Pacific.

Babcock (NZ) Ltd

Ph: +64 21922335

keith.drake@babcockinternational.com
www.babcock.nz



Located in Auckland, Babcock operates New Zealand's largest ship repair and marine engineering facility. With a large and well-appointed dry-dock and secure location, Babcock offers a full range of marine engineering, marine survey and refitting services to New Zealand and international vessels at a commercially competitive price and timeline. Babcock on-site services include a MAN PrimeServ fuel injection and turbocharger service centre, classification society approved UT measurement and IANZ accredited electronic calibration services. Superyachts previously dry-docked at our facility include Dytan, Arctic P and Rocinante.

Brin Wilson Boat Builders

Ph: +64 9 424 1719

info@brinwilsonboats.co.nz
www.brinwilsonboats.co.nz



Established in 1952 Brin Wilson Boatbuilders is celebrating 70 years in the boating industry in 2022. The company has evolved from being a builder of classic wooden boats back in 1952 to a reputable NZ refit and repair yard specialising in both timber and composite vessels. We have inside storage for boats up to 100ft and 100 tonne which means weather does not become an issue. Our work ranges from minor repairs and maintenance to complete refits, teaks decks, glass repairs, Osmosis treatments. We also are NZ agents for Flexiteek synthetic decking. We are based at Auckland's Gulf Harbour Marina which has many other trades on-site from painting through to engineering.

Integrated Marine Group

Ph: +64 21 759 157

mark@integratedmarine.com
www.integratedmarine.com



Integrated Marine Refit provides a "one-stop" solution for refit, repair and maintenance work on superyachts. We tailor an optimum program, driving early planning, classification coordination, to set the foundation, aligning the most facility for your project. Over the last 20 years the company has honed and developed a robust reputation in large yacht refit using highly skilled trades teams, fine-tuned to function as a cohesive deadline-driven group. We operate in Auckland and Whangarei but will readily relocate to wherever the project takes our team.

National Marine Pacific

Ph: + 64 9 320 3019

enquire@national-pacific.com
www.national-pacific.com



National Marine Suppliers – Pacific. Located in Auckland, New Zealand. Offering unparalleled service across the Pacific, from Tahiti to Indonesia. As a leading global yacht support group, we deliver professional, reliable services trusted by sailing yacht, motor yacht, and superyacht owners, captains, and crews worldwide. We provide high-quality marine and leisure products from New Zealand and the Pacific, alongside renowned international brands. Whether for a small boat or a superyacht, we blend global expertise with extensive Pacific experience. National Marine can assist with all superyacht supplies, deck/engineering spares, refit support, provisioning, and full NZ vessel agency. Choose us for exceptional support.

Norsand Boatyard

Ph: +64 9 430 8485

info@norsand.co.nz
www.norsand.co.nz



Norsand (incorporating Multihull NZ) is a full service boatyard for multihulls and monohulls up to 115 tons, being NZ's largest and most experienced multihull haulout specialist. All services are available on site. Traditional and composite boat builders, painters, engineers, fibreglass and osmosis repairs, rigging, roll swaging, splicing, rope supplies, and abrasive blasting. A marine store on-site. The friendly and experienced staff will ensure you have a productive and enjoyable stay.

Oceania Marine Refit Services

Ph: +64 9 430 3148

info@oceaniamarine.co.nz
www.oceaniamarine.co.nz



Since 2009 Oceania Marine have provided quality refit & maintenance service to vessels of all types, mono or multi-hull, power or sail. Using our 560T, 100T travel lifts or 800T slipway, extensive hardstand and undercover facilities, our experienced project managers, backed by highly skilled coatings, engineering, fabrication, boat building and electrical teams will take you from initial planning through to successful completion. Our in-house yacht agency team will smooth your arrival process and be there to support you throughout your time in NZ. Many say it, but we truly are your one-stop-shop.

Orams Marine

Ph: +64 27 472 3616

craig@oramsmarine.co.nz
www.oramsmarine.co.nz



The superyacht hub of the South Pacific, Orams Marine combines world-class, state-of-the-art facilities with the region's leading superyacht expertise. From its location in the heart of central Auckland, Orams Marine has been the home of Auckland's award-winning superyacht refit and maintenance services since hauling its first superyacht in 1986. A wide array of facilities, including an 820 tonne travel lift, 600 tonne slipway, 60 metre fully-enclosed superyacht sheds, 90 metre marinas and range of other haul out and hardstand options, combine with skilled tradespeople to produce standard-setting projects. Orams Marine's knowledgeable team work with captains, owners, management and crew to deliver excellence in refit solutions.

PRIMARY CONTRACTORS

Super Yacht Coatings

Ph: +64 21 386 764

info@superyachtcoatings.com
www.superyachtcoatings.com



This highly recommended company has carried out many major superyacht paint projects in New Zealand and overseas. Now operating from an impressive, designated 50m long enclosed refit facility beside Vessel Works in Tauranga, which is accessed by a 350-tonne travel lift. The company is the culmination of a combined 40+ years skills, experience and expertise of its two principal painters, Regan Woodward and Mark Hanna. Their skills and expertise are complemented by a staff of 45+ who are split between two bases in Tauranga and Auckland, making Super Yacht Coatings the largest marine paint team in New Zealand.

Titan Marine Engineering Ltd

Ph: +64 9 307 3930

neil@titanmarine.co.nz
www.titanmarine.co.nz



Titan Marine Engineering, located next to Silo Marina in the heart of Auckland provides a complete range of services to visiting superyachts. Titan's classification approved workshops, skilled tradesmen and dedicated project management team offer full refit and maintenance capabilities to match any yacht owner and crew expectations. Our 80m, 1500ton slipway and 80m repair berth accommodates all works including survey management, antifouling, engine and system installation and maintenance, hull and superstructure alterations, repairs and painting. We have classification approval for stainless steel, mild steel and aluminium welding. Over 20 years in marine repair provides Titan with confidence to meet your vessel requirements.

Vessel Works

Ph: +64 7 577 7270

info@vesselworks.co.nz
www.vesselworks.co.nz



With a 350-tonne mobile vessel hoist, deep water access, and 6,300sqm of hardstand. Vessel Works, Tauranga is quickly becoming the destination of choice for commercial and recreational boat owners looking for great service, reasonable rates, and the freedom of an open yard. Vessel Works is at the hub of a world-class network of marine specialists based on-site and locally. Facilities include haulout & launch, refit wharf, floating berths, place of first arrival, and transitional facility. Experience the Vessel Works difference today.

Whangarei Marine Industry

www.whangareimarine.co.nz



Whangarei, is a one-stop destination for all requirements and a leading marine service centre with the reputation of a must-visit destination for foreign yachts. Servicing and refits for tenders to superyachts and haul-out up to 2000 tonnes. Multiple marinas, haulout yards, professional marine service providers and extensive retail stores within walking distance. NZ Customs Port of Entry at the harbour entrance in Marsden Cove Marina. Only a two hour drive or 35 minute flight to Auckland.

YACHT AGENTS

37 South

Ph: +64 9 302 0178

The people behind 37South pioneered the superyacht industry in the South Pacific where we are now the leading full-service superyacht agent and support provider. We can assist with a wide range of needs, from refits to new builds, from small scale provisioning to large scale engineering systems, yacht sales, cruising itineraries, charters and crew placement.



service@37southyachts.com
www.37southyachts.com

AGents by Catalano

Ph: +64 21 409 802

Shoreside superyacht support, providing a comprehensive range of award-winning services - from freshest provisions, best NZ wines, to cruising itineraries with spectacular landscapes, crew services, marine engineering, refits, replacement parts and maintenance services. Our extensive experience and passion to excel ensures your New Zealand experience is the best it can be.



duthie@catalanoshipping.com
www.catalanoshippingpacific.com

Integrated Marine Group

Ph: +64 21 759 157

Integrated Marine Yacht Support offers a yacht agent service aimed to make a New Zealand stop one of your most favoured memories. We have 20 years' experience tailored to New Zealand's unique attributes. We have the strong experience to assist with operational cruising as well as offering a maintenance function.



mark@integratedmarine.com
www.integratedmarine.com

Reid Yacht Services

Ph: +64 9 368 9301

Friendly, full-service Yacht Agents helping visiting yachts since 1997.

- Customs and Immigration clearance
- Provisioning, crew accommodation
- Spare parts throughout the Pacific
- Crew placement specialists
- Cruising and Refit advice
- Prompt, knowledgeable, cost-effective
- Locally owned and operated.



info@rys.co.nz
www.rys.co.nz

Oceania Yacht Agency

Ph: +64 9 430 3148

Our experienced team offers comprehensive assistance to ensure your time in the Oceania region is a pleasurable one. All the usual agency services one would expect, as well as direct links to Oceania Marine Shipyards' refit services to provide in or out of water refit and maintenance with no added agency charges.



agent@oceaniayachtagency.com
www.oceaniayachtagency.com

Urban Sea

Ph: +64 21 054 6024

Northland's leading yacht agents, offering first-class service and an extensive range of shoreside solutions. With 20 years of global industry expertise, we ensure your time in New Zealand is unforgettable. Whether cruising or in refit, Urban Sea can assist, working alongside local shipyards and contractors. Located in Whangarei's Marine Centre at Port Nikau.



karma@urbansea.co.nz
www.urbansea.co.nz



New Zealand native Kiwi

MARINAS AND MOORINGS

Bay of Islands Marina

Ph: +64 9 402 7124

enquiries@boimarina.co.nz
www.boimarina.co.nz



Berthage up to: 100m / 328ft

Located in the beautiful Bay of Islands, this 400 berth marina is the primary Port of Entry into New Zealand. Customs and quarantine berths are conveniently located on the outer breakwater. Port Opua boasts modern facilities with comprehensive marine trade services. Swing moorings are also available. Facilities include diesel fuel dock, Wi-Fi, travel lift, catamaran haul out, and marine painters plus much more all within walking distance in the Opua Marine Park. Opua is located 5 minutes by road, from the tourist centre of Paihia, and is 20 minutes from the Bay of Islands Airport.

Bayswater Marina

Ph: +64 9 446 1600

office@bayswater.co.nz
www.bayswater.co.nz



Berthage up to: 40m / 132ft

Bayswater Marina is one of Auckland's newest marina facilities located just across the harbour from Auckland CBD. The Marina lies at the end of a peninsula providing spectacular views of Auckland City with travelling times ranging from 15 minutes by road to 5 minutes by regular harbour ferry service to Auckland CBD. The Marina features 415 full length finger berths, all berths are equipped with water and 240 volt power, with earth leakage protection. Bayswater Marina also provides a refuelling facility and full security. Live-aboards are welcome year round. Bayswater Marina offers wireless broadband internet access in and around the marina facility.

Gulf Harbour Marina

Ph: +64 9 424 6200

marina@gulpharbourmarina.co.nz
www.gulpharbourmarina.co.nz



Berthage up to: 45m / 164ft

This world-class marina and haul out service centre is one of the most popular in New Zealand. Beautifully situated and impressively resourced with 100T and 30T travel lifts, it's the perfect gateway to the magnificent boating and cruising grounds of the Hauraki Gulf. Whether you are cruising, racing, or skippering a vessel – bring your boat home to Auckland's premier marina. Easily accessed to the north of Auckland City, Gulf Harbour Marina offers superb one-stop facilities for every kind of vessel management.

Hobsonville Marina

Ph: +64 9 416 7447

info@hobsonvillemarina.co.nz
www.hobsonvillemarina.co.nz



Berthage up to 18m / 60ft

Hobsonville Marina is located in Auckland's upper Waitemata Harbour, a short distance beyond the Harbour Bridge, and has 592 wet berths for vessels up to 16m. The marina has a relaxed and friendly atmosphere and living aboard is permitted. Suitable for short or long term stays, our shopping centre includes a café, superette, chandlery, bar and restaurant, laundromat and showers. Major shopping centres are nearby and there is a ferry service to the CBD. The marina caters for all your maintenance needs, operating 2 travel lifts capable of lifting vessels to 75T, and a large hardstand area with a full suite of marine related services on site.

Marsden Cove Marina

Ph: +64 9 432 7740

info@marsdencovemarina.co.nz
www.marsdencovemarina.co.nz



Berthage up to: 30m / 100ft

Located just inside the entrance to Whangarei Harbour, Marsden Cove Marina is an ideal port of entry to New Zealand with all tide access, Customs berths, 24/7 fuel jetty, a vessel haul-out service, and hardstand facility. The commercial centre offers a supermarket, general store, ships chandlery, bottle shop, fishing club, restaurants and bar. The marina facilities include a guest lounge, laundry and shower block. Marine services include three boat building companies, painters, riggers, upholstery, marine electrical and diesel mechanics. Marsden Cove Marina is equal distance to the three premier cruising grounds on New Zealand's northeast coast – Great Barrier Island, Hauraki Gulf, and the Bay of Islands.

Orams Marine

Ph: +64 9 303 9999

info@oramsmarine.co.nz
wwworamsmarine.co.nz



Berthage up to: 100m / 328ft

Berth in the heart of central Auckland with Orams Marine's newly-expanded marina. Deep water access and no air draft restriction, with space to work alongside, make these berths an excellent choice for vessels across a range of sizes. Proximity to Orams Marine's comprehensive marine facilities and trades, Captain's Lounge, and crew facilities, set in the midst of central Auckland's best hospitality and entertainment precinct is another drawcard. Enjoy access to bunkering and pumpout, numerous shore power connection options, high-speed WiFi, an on-water fuelling depot and purpose-built dry stack, all supported by an onsite team to help you get the most from your time in Auckland.

Port Nikau

Ph: +64 27 423 8064

blair@portnikau.co.nz
www.portnikau.co.nz



Berthage up to 90m / 295ft

Port Nikau is two hours' north of Auckland and perfectly positioned in the heart of Whangarei Harbour marine precinct, with a deep 6-metre superyacht and recreational marina. Port Nikau caters for superyachts with stern-to Mediterranean-style berths.

Port Nikau has 670 m2 of wharf space available to set up container workshops and service masts up to 65m long and is central to New Zealand's most experienced boat building, hydraulics, electrical, survey, refit and repair specialists. 560T haul-out facilities are available beside the berths, as well as project management and shore side support agents.

Silo Marina

Ph: +64 9 355 7479

info@silomarina.co.nz
www.silomarina.co.nz



Berthage up to: 140m / 460ft

Silo Marina is the premier hub for superyachts visiting the South Pacific region. Centrally located on the southern side of Auckland's Waitemata Harbour and on the doorstep of the Hauraki Gulf's stunning cruising grounds. With 8 berths up to 140m in length, all supplied with power (up to 800amps), water, internet and pump out facilities. We are proud to provide MPI and customs clearance at berth for vessels arriving from overseas. The marina is situated just minutes away from major marine retailers and refit facilities and a range of Auckland's best bars and restaurants. The experienced team is available 24/7 to facilitate and support your superyacht arrival and requirements.

MARINAS AND MOORINGS

Tauranga Bridge Marina

Ph: +64 7 575 8264

berths@marina.co.nz
www.marina.co.nz



Berthage up to: 37m / 122ft

Tauranga Bridge Marina is located on the Harbour Bridge Causeway between the beautiful City of Tauranga and the golden beaches of Mount Maunganui. The availability of rental berths and our NZ Port of Entry status makes Tauranga Bridge Marina the ultimate base in the Bay. Only 5 minutes by taxi to Tauranga Airport with international connections via Auckland, Wellington or Christchurch. Our facilities include 500 fully serviced marina berths with a fuel dock, sewage pump out facility, 35t travelift, licensed restaurant, café, chandlery and boat sales.

Viaduct Harbour Marina

Ph: +64 9 373 4141

info@viaduct.co.nz
www.viaductharbourmarina.co.nz



Berthage up to: 60m / 197ft

Viaduct Harbour is Auckland's most centrally located marina. Situated in the heart of the city's vibrant waterfront hospitality scene, directly adjacent to the downtown Commercial Bay shopping precinct, Viaduct Harbour has the best of the CBD's amenities on its doorstep. Park Hyatt and QT hotels overlook the marina from opposite edges of the water. Westhaven, New Zealand's largest marine service precinct, lies a short walk to the west. The marina caters for 150 vessels up to 60m in length.

Viaduct Marina

Ph: +64 9 355 7479

info@viaductmarina.co.nz
www.viaductmarina.co.nz



Berthage up to: 50m / 165ft

A boutique inner-city marina nestled within Auckland's vibrant Viaduct precinct and adjacent to the newly developed Wynyard Quarter, Viaduct Marina offers a comprehensive marine service package close to world-class restaurants, trendy bars, accommodation and transport links. Viaduct Marina maintains 50+ fully serviced berths up to 50m in length including dedicated MPI and customs clearance berths for vessels arriving into New Zealand. Our experienced team is available 24/7 to facilitate and support your vessels stay at Viaduct Marina.

Whangarei Marina

Ph: +64 9 438 2033

info@whangareimarina.nz
www.whangareimarina.com



Berthage up to: 30m

Whangarei Marina is internationally renowned for its hospitality. It is surrounded by cafés, restaurants, shopping, parks, a large playground and bush walks, and you can walk to swimming pools, supermarkets, chandlers and marine services. VHF 18 to easily open the impressive bridge at the entrance. Construction is underway for a second marina downstream of the bridge.

BOAT BUILDERS AND SHIPYARDS

Babcock NZ

Ph: 021 922 335

Babcock (NZ) Ltd, located in Auckland, is NZ's largest ship repair and marine engineering facility. With a large and well-appointed dry-dock and secure location, Babcock offers a full range of marine engineering, marine survey and refitting services to international and New Zealand vessels at a commercially competitive price and timeline.



keith.drake@babcockinternational.com
www.babcock.nz

Bay of Islands Boatyard

Ph: +64 9 402 7124

The experienced painting team can help you with any project, be it large or small. Complete repaints, Propspeed, anti-foul, topsides, polishing, coamings, interiors and much more. Access to boat builders and haul-out facilities in Port Opuia. World-class paint finishes.



enquiries@boimarina.co.nz
www.boimarina.co.nz

Brin Wilson Boat Builders

Ph: +64 9 424 1719

Established in 1952, Brin Wilson Boats has evolved from being a builder of classic wooden boats to a reputable refit and repair yard with over 20 years' experience. Based at Gulf Harbour Marina, Auckland, the company caters to vessels of all sizes. Facilities include a 35m x 20m refit and repair shed, 120ton and 35ton travellift.



info@brinwilsonboats.co.nz
www.brinwilsonboats.co.nz

Circa

Ph: 027 516 1470

With a worldwide reputation spanning almost 50 years, Circa Marine has specialised in new builds of all aluminium vessels to 40m (130'), including our own range of long-range, efficient expedition motor-yachts. Circa also undertake vessel refits including all interior joinery work, design, systems and electronics upgrades.



peter@circamarine.co.nz
www.circamarine.com

Heron Ship Repair Ltd

Ph: +64 9 438 0753

Heron Ship Repair is famous for its specialist marine fabricators, heavy engineers, fitters and painters. Our slipway can accommodate vessels up to 1800 tonne and 90m. We specialise in full class survey and repair services for commercial and pleasure vessels and can undertake substantial refit projects and new builds.



spencer@shiprepair.co.nz
www.shiprepair.co.nz

Hobsonville Marine Services

Ph: +64 9 416 6111

Hobsonville Marine Services is located in Auckland's upper Waitemata Harbour as part of the Hobsonville Marina Precinct. Friendly knowledgeable staff delivering boat haulout (75T and 35T Travelifts, max beam 6.4m), Lift, Wash and Hardstand, full on-site servicing facilities or 'do it yourself'.



liftme@hobsonvillemarineservices.co.nz
hobsonvillemarina.co.nz/haul-out-service/

Lloyd Stevenson Boatbuilders

Ph: +64 9 274 7680

Custom Boat Builders. Lloyd Stevenson Boatbuilders has an enviable reputation for quality, craftsmanship and integrity. Working with our clients, we deliver truly custom boats, that are uniquely theirs. From private motor yachts, carbon race yachts to cutting-edge superyacht tenders, our experience allows us to undertake the most complex of new builds and re-fits.



info@lsb.co.nz
www.lloydstevenson-yachts.co.nz



Redwoods Treewalk, Rotorua

BOAT BUILDERS AND SHIPYARDS

Marra Marine

Ph: +64 27 447 1082

Tauranga-based boat builder Marra Marine undertakes boat refurbishments and new builds for owners across New Zealand, for high-end composites and wooden vessels. We have a passion for high-quality work and finishes on every vessel and for providing the highest standards of customer service on every project to bring a clients' visions to life.



admin@marramarine.co.nz
www.marramarine.nz

Norsand Boatyard

Ph: +64 9 430 8485

Norsand (incorporating Multihull NZ) is a full service boatyard for multihulls and monohulls, being NZ's largest and most experienced multihull haulout specialist. All services on site. Traditional and composite boat builders, painters, engineers, fibreglass, osmosis repair, rigging, blasting and a marine store. Norsand's friendly and experienced staff will ensure a productive and enjoyable stay.



info@norsand.co.nz
www.norsand.co.nz

Oceania Marine Refit Services

Ph: +64 9 430 3148

Located in Port Whangārei, between Auckland and the Bay of Islands, with 800T slipway, 560T & 100T travel lift options, extensive hardstand and undercover spaces, with our own highly experienced project managers, coatings, engineering, fabrication, boat building and electrical teams, we can look after all your refit and maintenance needs.



info@oceaniamarine.co.nz
www.oceaniamarine.co.nz

Q-West Boat Builders Ltd

Ph: +64 6 349 0035

Q-West Boat Builders are aluminium boat builders based in Whanganui, with a reputation for being a professional, quality-driven boat builder servicing the commercial workboat market. Q-West brings professionalism and commitment to each project, focusing on quality, price and delivery to ensure each customer receives excellent service and value for money.



sales@q-west.co.nz
www.q-west.com

Rayglass Boats

Ph: 64 9 576 7373

Rayglass Boats is one of New Zealand's leading fibreglass boat manufacturers, crafting high-quality vessels since 1985. Renowned as an industry leader in design, manufacturing, and vessel refit, we manage every aspect of maintenance from meticulous repairs to comprehensive tender refits.



taryn@rayglass.co.nz
www.rayglass.co.nz

TC Marine

Ph: +64 21 38 66 33

TC Marine located at Marsden Cove Hardstand are experienced craftsmen in a diverse range of boatbuilding. We provide quality workmanship covering a range of services and maintenance, including composite repairs, refits, joinery, painting and windows/hatches. Together with a trusted group of subtrades we can cover all of your boating needs.



info@tcmarine.co.nz
www.tcmarine.co.nz

Vessel Works

Ph: +64 7 577 7270

With a 350 tonne and 11.5-metre-wide mobile vessel hoist, deep water access, and 6,300sqm of hardstand. Vessel Works, Tauranga is at the hub of a world-class network of marine specialists based on-site and locally. Facilities include haulout & launch, refit wharf, floating berths, place of first arrival, and transitional facility.



info@vesselworks.co.nz
www.vesselworks.co.nz

Yachting Developments

Ph: +64 9 417 0060

Yachting Developments is an award-winning new build shipyard, specialising in new build composite construction. The yard and its skilled team have a proven track record creating vessels to the highest quality standards. Projects range in size from specialist tenders to custom-built superyachts, both power and sail, all tailored to the client's brief.



info@yachtingdevelopments.co.nz
www.yachtingdevelopments.co.nz

CONSULTANCY

Gurit (Asia Pacific)

Ph: +64 9 415 6262

Gurit offers a comprehensive range of composite materials and engineering services with unrivalled in-house technical expertise and extensive knowledge of the NZ marine industry. Gurit's materials are suitable for a broad spectrum of marine projects – Structural cores, prepregs, fabric reinforcements, epoxy resins and laminating systems, adhesives, materials kits, infused panels, vacuum consumables.



info-nz@gurit.com
www.gurit.com

HPI-CEproof NZ Ltd

Ph: +64 21 287 5877

CE & UKCA marking
EU Recreational Craft Directive - RCD
2013/53/EU Recreational crafts (boats) hull
length 2.5m and 24m.(8ft-78ft)
UK Recreational Craft Regulations -RCR -
HPI-CEproof can place the UKCA- and CE
marking on a product simultaneously.
HPI Verification Services (HPIVS)
EU Pressure Equipment Directive
(PED)2014/68/EU
EU Simple Pressure Vessel Directive (SPVD)
EU Machinery Directive 2006/42/EC



newzealand@hpi-ceproof.com
www.hpi-ceproof.com

Marine Industrial Design

Ph: +64 9 419 8440

A marine design consultancy with an experienced team of Naval Architects, Marine Engineers, Designers at NZ refit centres. Experienced in delivering superyacht design updates, modifications, retrofits. Providing innovative, practical, compliant, cost-effective solutions. Working with yards & service providers, MID provide design services to meet challenging vessel requirements and project schedules.



contact@marinedesign.co.nz
www.marinedesign.co.nz

New Zealand Composites Ltd

Ph: +64 21 300 151

100% New Zealand owned and operated. Supplier of Advanced Composite Structural Materials. Australasian agents for Mitsubishi Chemical and Carbon Fibre Composites, Euro Composites Honeycomb and Armacell. Suppliers to the NZ Marine Industry with a wide, high quality range of pre-preg, core material, fibre reinforcements, vacuum consumables from the world's leading composite material manufacturers.



pannett.d@xtra.co.nz
www.nzcomposites.com



Auckland City at sunset



Pyrotek



MARINE CERTIFIED ACOUSTIC AND THERMAL SOLUTIONS

- Flexible mass loaded vinyl barriers
- Vibration damping solutions
- Isolation products
- Non-combustible thermal insulation
- Fire protection systems
- Custom exhaust and muffler systems
- Acoustic design specification and CAD drawings

P: 0800 Acoustics
E: nzsales@pyrotek.com
W: pyroteknc.com



GLOBAL FOOTPRINT | LOCAL SUPPORT

CAT[®] MARINE POWER SOLUTIONS



PLANNED MAINTENANCE | OVERHAUL | REPAIR | REPOWER

Terra Cat are the official Caterpillar Dealer for New Zealand. Let us support your Cat[®] Marine Propulsion and Genset requirements with our nation-wide branch network.

marine@terracat.co.nz
terracat.co.nz
0800 93 39 39

POWER ON THE GROUND



ELECTRICAL REPAIR AND SUPPLIES

ATTEST

Ph: +64 9 390 1446

Specialising in electrical controls and located in Orams Marine, a few minutes' walk from Auckland's superyacht berths. If you expect broad experience, a desire for excellence, and a can-do attitude you want Attest on-board.

- Electrical Design & Engineering
- Ship's Monitoring & Control Systems
- Generator & Power Management
- Magnus Shore Power
- Upgrades & Maintenance



chris@attest.co.nz
www.attest.co.nz

McKay Ltd

Ph: +64 9 470 1910

McKay is an integrated electrical design, installation and service provider. Offering leading edge electrical solutions, McKay provides products and services to a broad range of vessels worldwide. McKay has expertise in hybrid propulsion, energy storage, power generation, electrical distribution, Automation, shore power and safety systems.



marine@mckay.co.nz
www.mckay.co.nz

So Pac Marine

Ph: +64 9 448 5900

So-Pac Marine distributes: Balmar, Martyr Anodes, Edson Steering, Freeman Marine, Groco Plumbing, HMP Jet Thrusters, Jastram and Wagner Hydraulic Steering, Magma BBQs & Grills, Man Ship Hatches, Max Prop, Octopus Pumpsets, BOSS OWS, Wesmar Bow Thrusters and Stabilizers. Qualified engineers are available to provide support for offshore visitors.



info@sopac.co.nz
www.sopac.co.nz

Tenob Wholesale Marine

Ph: +64 9 273 9180

Tenob Wholesale Marine are exclusive distributors for : Quick Nautical Equipment, Quick Marine Lighting, Hydrive Hydraulic Steering, Roca Wiper System, Perko Hardware, Glendinning Electronic controls, Tecnoseal Anodes, Marco Pumps, Shurflo pumps, Bennett Marine, Trident Marine hose. We have a great sales team and prompt service in NZ and around the Pacific.



sales@tenob.co.nz
www.tenob.co.nz

Trans Marine Pro NZ & Solar Solutions Northland

Ph: +64 27 228 4961

Trans Marine are Importers and distributors of marine electric power generation and conversion equipment. Victron Energy. CALB Lithium Batteries, BALMAR alternators, Solarsystems, Orion BMS, Raymarine etc. Specializing in: System Design, Lithium Batteries, Electric Propulsion, Solar and Wind, Alternators, Inverters & Chargers, Navigation & Communication, Home Solar Systems



office@transmarinepro.co.nz
www.transmarinepro.co.nz

World Power

Ph: +64 9 368 5356

Marine Electricians & Generator Specialists - Auckland's largest marine electrical company, specialising in marine electrical and electronic systems.

- Refits, maintenance and repair
- AC generation and control systems
- DC systems and battery testing
- Class survey testing and repairs



info@worldpower.co.nz
www.worldpower.co.nz



ELECTRICAL AND ELECTRONIC SERVICES

Global Marine Ltd

Ph: +64 9 553 7424

We are experienced and professional specialists within the supply of AV, IT & Communication systems in the Marine and Super Yacht industries. Anything from simple and advanced AV Systems to complex IT infrastructure and Satellite systems. Based in Auckland with satellite office in Europe along with a strong dealer and partner network globally.



info@gmts.io
www.gmts.io

Liquid Automation Ltd

Ph: +64 9 4795415

New Zealand's leading marine audio visual / IT specialists, based out of Auckland. We have in-house programmers for Crestron, Lutron, Savant and more. From small service jobs to extensive refits. We offer Starlink installs, custom control systems, wired, WiFi and GSM networks with Bearer selecting and bandwidth management, lighting and blind control, glass bridge solutions and documentation updates.



info@liquidautomation.co.nz
www.liquidautomation.co.nz

Mainsail Electronics Ltd

Ph: +64 21 594 791

Mainsail Electronics are your marine systems specialists. Based in Auckland with over 35 years experience, we specialise in digital switching, charging systems, Lithium Ion battery technology and solar systems. From pleasure boats to superyachts, we deliver engineered solutions, installations and full service throughout NZ and the world.



info@mailsailelectronics.com
www.mainsailelectronics.com

Swell Marine & The Chandlery

Ph: +64 27 562 7955

"Swell Marine" and "The Chandlery" in Russell, Bay of Islands is your first stop for expert sales, installations and service of Marine Electronics, Batteries, power systems, ropes, stoves, clothing, foul weather gear and all other manner of marine equipment. Garmin, Simrad, BnG, Lowrance, Raymarine, Fusion, iCom, Yacht controller, Henri Lloyd.



info@swellmarine.co.nz
www.swellmarine.co.nz



Waimarino Adventure Park, Bay of Plenty

Electronic Navigation

Ph: +64 9 373 5595

ENL has more than 72 years' experience within the marine industry. ENL are the NZ Furuno Distributors as well as Manufacturer/Distributor of WASSP Multibeam Sonar. From complex applications for defence, commercial and superyacht use to a stand-alone fish finder, ENL has the expertise to specify, supply, install and service top quality marine electronics.



enquires@enl.co.nz
www.enl.co.nz

Wright Technologies

Ph: +64 4 568 8975

Wright's is a marine electronics business covering New Zealand and the South Pacific. We sell and service some of the world's most prestigious brands including, Sperry Marine, Sailor, Tokyo Keiki, Raytheon Anschutz, Autronica, Saab, Inmarsat, Jotron, SAM Electronics. Radio Surveys for Lloyds, DNV-GL, ABS, NKK, MCA, and Maritime NZ.



sales@wrights.co.nz
www.wrights.co.nz

ENGINEERING

Auckland Engineering Supplies

Ph: +64 9 358 0910

AES is the preferred supplier of tools and equipment to much of New Zealand's marine industry, giving second-to-none supply and performance. We have a large range of products from oils, hand tools, abrasives, fittings, fastenings and more. We have branches at Gulf Harbour, Tel 09 424-0640 and Westhaven marinas, Tel 09 358-0910.



info@aesnz.com
www.aesnz.com

Chains, Ropes and Anchors

Ph: +64 9 444 8212

Specialising in chains and ropes. NZ's largest range of high quality products backed by NZ's most knowledgeable team in the field. There isn't much we can't do in the way of supply or work on the products we deal in. Huge to tiny, we have you covered.



info@chainsropesandanchors.co.nz
www.chainsropesandanchors.co.nz

General Marine Services

Ph: +64 9 309 6317

Auckland-based, we are a specialist marine engineering company. Knowledgeable and helpful staff can support all types of engineering and supply requirements for any job on-board. Machining and fabrication capabilities just outside of the CBD for any bigger projects and a comprehensive range of marine and engineering products in the Orams Marine yard.



sales@generalmarine.co.nz
www.generalmarine.co.nz



Waitangi Treaty Grounds Meeting House. David Kirkland



Whangarei, Northland

ENGINEERING

Onehunga Electroplaters

Ph: +64 9 634 1071

Onehunga Electroplaters, the electroplating division of Bumper Replacements NZ Ltd, has specialised in marine chrome plating for over 75 years. With our in-house metal polishing facilities, stainless steel electropolishing and chrome plating plant (largest nickel and chrome tanks in New Zealand) we can resurface all bright work to that 'superyacht' finish.



sales@bumper.co.nz
www.bumper.co.nz

Marine & Industrial Diesels

Ph: +64 27 777 1419

Hyundai Marine dealers and Cummins specialists. We are your trusted heavy diesel engine specialists based in Auckland, with over 25 years' experience working on all Cummins. Full workshop facilities and mobile vans, servicing both pleasure craft and commercial marine. We offer inboard diesel engine repairs, servicing, complete rebuilds and generators.



office@midiesels.co.nz
www.midiesels.co.nz

So-Pac Marine

Ph: +64 9 448 5900

So-Pac Marine distributes: Balmar, Martyr Anodes, Edson Steering, Freeman Marine, Groco Plumbing, HMP Jet Thrusters, Jastram and Wagner Hydraulic Steering, Magma BBQs & Grills, Man Ship Hatches, Max Prop, Octopus Pumpsets, BOSS OWS, Wesmar Bow Thrusters and Stabilizers. Qualified engineers are available to provide support for offshore visitors.



info@sopac.co.nz
www.sopac.co.nz



Tunnel Beach, Dunedin

Matapouri, Northland



ENGINES

AB Equipment Marine & Industrial Power

Ph: 64+ 9 299 6019

Our marine power portfolio includes FPT Leisure & commercial engines (85hp -1000hp), Hyundai Infracore Commercial Engines (160hp-1200hp), Zenith Marine Gensets (9Kva – 100Kva) & Paguro Marine Gensets (3Kva – 6Kva). ZF Marine transmissions & DI Marine transmissions. Our products are supported by a dedicated network of approved service agents. We cover all NZ and Pacific region.



Adrian.Penman@abequipment.co.nz
<https://marineindustrial.abequipment.co.nz/>

Diesel Clean

Ph: (NZ) 0800 482652

- Fuel system management
- Diesel cleaning and polishing
- Tank cleaning
- Filter service
- Cleaning and replacement
- Tank repair
- Fuel Polishing Systems



mike@dieselclean.co.nz
www.dieselclean.co.nz

Diesel Marine NZ

Ph: +64 9 218 9706

Diesel Marine NZ is the authorised distributor for Northern Lights Generators and Luger engines. We provide genuine parts, sales & service across the south pacific. We are also the MAN marine engines dealer for New Zealand. Our engines range from 174Hp to 2200Hp. Generators from 5kw to 245kw.



admin@dieselmarine.co.nz
www.dieselmarine.co.nz

General Marine Services

Ph: +64 9 309 6317

Engines from 10HP – 1200HP Gensets from 4kW-150kW. Cummins Onan Generators for NZ/Fiji, Nanni propulsion engines and generators for NZ, Scania for greater Auckland/Northland and Hamilton|et. We carry engines and a comprehensive range of spare parts. We have diagnostic connection for these brands. Parts and support nationally and across the South Pacific.



sales@generalmarine.co.nz
www.generalmarine.co.nz

Ovlov Marine - Yamaha

Ph: +64 9 377 4285

We are authorised agents for Yamaha Outboards, parts and accessories. Ranging from 2hp to 450hp in 2 and 4 stroke. Stocking a large range of engines and parts across 3 branches based in Westhaven, Gulf Harbour and Pine Harbour Marinas, servicing the greater Auckland area. Our trained service team offer the skills and experience you need.



info@ovlov.co.nz
www.ovlov.co.nz

Ovlov Marine - Volvo Penta

Ph: +64 9 377 4285

We are New Zealand's largest Volvo Penta dealer across 3 branches in Auckland - Westhaven, Gulf Harbour and Pine Harbour Marinas. We specialise in repair and servicing of all Volvo Penta products as well as dedicated parts team. We also supply engines from 13hp to 1000hp. Agents for Racor filtration and Humphree Stabilisation.



info@ovlov.co.nz
www.ovlov.co.nz

Ovlov Marine Gulf Harbour - Yanmar

Ph: +64 9 424 1260

We are authorised agents for Yanmar engines, parts and accessories. Ranging from 9HP to 640HP. We specialise in repair and servicing of all Yanmar products as well as a dedicated parts team. Our trained service team offer the skills and experience you need.



info@ovlovmarine.co.nz
www.ovlovmarine.co.nz

Penske New Zealand

Ph: 0800 782 762

Penske New Zealand is the exclusively-appointed distributor of Rolls-Royce Power Systems' mtu brand of marine power solutions. With genuine parts, world-class technicians, and mtu's global service warranty, your adventure down under just got easier. Contact us for all mtu premium products and services while cruising the South Pacific.



marine@penske.co.nz
www.penske.co.nz

ENGINES

Terra Power Systems

Ph: 0800 93 39 39

From Cat marine diesel engines and generator sets to technology solutions, Terra Power Systems is your partner on the water. For clean, reliable power, choose from our broad Cat product line-up. Our technology-enabled solutions keep your commercial and pleasure vessels running safely and efficiently, backed by our nationwide support network.



marine@terraecat.co.nz
www.terraecat.co.nz

Whangarei Marine Services

Ph: +64 9 438 3296

Whangarei Marine Services (was Ray Roberts Marine) offers a comprehensive marine engineering service, including sales, installation, general maintenance and repair work. We are proud to be the local agents for Volvo Penta and Yanmar and we stock an extensive range of mechanical components for yachts and power boats, both pleasure craft and commercial



admin@marinetechs.co.nz
www.rayrobertsmarine.co.nz



Waterfall, Southland

INTERIOR

Boat Cover Company

Ph: +64 9 309 4302

The Boat Cover Company specialises in the design and manufacture of custom-made covers and upholstery for interior and exterior applications. We strive to provide excellent customer service, inspired design, and durable hand-crafted products, without the slightest compromise to quality.



info@thecoverco.co.nz
www.thecoverco.co.nz

Brin Wilson Boat Builders

Ph: +64 9 424 1719

Established in 1952, Brin Wilson Boats has evolved from being a builder of classic wooden boats to a reputable refit and repair yard with over 20 years' experience. Based at Gulf Harbour Marina, Auckland, the company caters to vessels of all sizes. Facilities include a 35m x 20m refit and repair shed, 120ton and 35ton travel lift.



info@brinwilsonboats.co.nz
www.brinwilsonboats.co.nz



Kauri Cliffs golf course, Northland



Tane Mahuta, Northland

MASTS AND SAILS

C-Tech Ltd

Ph: +64 9 810 8406

For over 25 years, C-Tech has been manufacturing quality carbon fibre solutions, supplying over 97 countries with carbon tubes, sail battens, spars and custom carbon composites. As the world leading SailBattens manufacturer, we supply superyachts, offshore racers, multihulls, maxis and cruisers with a range of hollow battens, plate battens, sail and batten hardware and snuffers.



c-tech@c-tech.co.nz
www.c-tech.co.nz

Doyle Sails NZ

Ph: +64 9 820 9140

For over 40 years Doyle Sails have provided high-quality reliable sails to yachts of all sizes and it is no coincidence that Doyle Sails are the sailmaker of choice to many yachts. With a stellar reputation for impeccable attention to engineering detail and construction, utilizing the latest technologies to create the most reliable sails on the market.



info@doylesails.co.nz
www.doylesails.co.nz

New Zealand Rigging

Ph: +64 9 480 8090

New Zealand Rigging is New Zealand's largest locally owned and operated yacht rigging and spar making business. We offer a complete mast and rigging service and manufacture masts in carbon fibre and aluminium for dinghies, cruising boats, club racers, sports boats, Grand-Prix race boats and superyachts.



info@nzrigging.com
www.nzrigging.com

North Sails

Ph: +64 9 359 5999

North Sails New Zealand is the Auckland, New Zealand site of the world's leading sail maker. Located near the centre of the city with a full manufacturing and service site at 217 Archers Road, Wairau Valley, the loft is perfectly suited to fulfil your sail making requirements.



sales@nz.northsails.com
www.northsails.com



Poor Knights Islands, Northland

Southern Spars

Ph: +64 9 845 7200

Southern Spars specialises in the design and construction of carbon fibre spars and components, rigging, and rig servicing. Whether the goal is all-out speed and strength or a custom-built combination of performance and luxury, Southern Spars can produce a complete spar package comprising mast(s), boom and rigging to meet your requirements.



info@southernspars.com
www.southernspars.com

PAINTING

Altex Yacht & Boat Paint

Ph: +64 7 541 1221

For 70 years we have been formulating and manufacturing the highest-quality antifouling and topside paints specifically designed for the harsh conditions of the Asia-Pacific region. Altex's trusted products, including a full commercial marine range, will keep your boat looking and performing its best. Protection against fouling, UV damage, and the rigors of the open water.



sales@altexboatpaint.co.nz
www.altexboatpaint.com

Bay of Islands Boatyard

Ph: +64 9 402 7124

The experienced painting team can help you with any project, be it large or small. Complete repaints, Prospeed, anti-foul, topsides, polishing, coamings, interiors and much more. Access to boat builders and haul-out facilities in Port Opuia. World-class paint finishes.



enquiries@boimarina.co.nz
www.boimarina.co.nz

Marine Protection Solutions

Ph: +64 27 282 5999

- Marine Vinyl Wrapping
Cost effective, less maintenance, protect and enhance
- Paint protection films, 3M Di-Noc interior wrap, marine window tinting
- Care Products

A wide range of surface protection products



info@nzmps.co.nz
www.nzmps.co.nz

Norsand Boatyard

Ph: +64 9 430 8485

Norsand Boatyard's professional paint team can undertake any task required on your vessel. Our painters can address all aspects of marine coatings, from high end interior and exterior finishing to underwater barrier coatings and antifouling. Skilled in multiple forms of applications, including conventional spraying, airless spraying, brush and roller applications.



info@norsand.co.nz
www.norsand.co.nz

Oceania Marine Coatings

Ph: +64 9 430 3148

Oceania Marine Coatings provides top-tier marine painting services managed by experienced professionals. Our skilled team handles new builds and refits, covering major paint brands, surface prep, priming, metallic finishes, polishing, blasting, and corrosion repairs. We offer high-quality service for external and internal brightwork, serviced with 100T and 560T travel lifts and undercover shed options.



info@oceaniamarine.co.nz
www.oceaniamarine.co.nz

Orams Marine

Ph: +64 27 472 3616

Orams Marine's superyacht refit buildings, accessed by an 820 tonne travel lift, deliver world-class paint finishes to even the largest superyachts. Onsite painters work closely with major global brands to ensure a perfect match, and perfect finish, every time within a climate-controlled, enclosed environment.



craig@oramsmarine.co.nz
wwworamsmarine.co.nz

Super Yacht Coatings

Ph: +64 21 386 764

Super Yacht Coatings has carried out many major superyacht paint projects in New Zealand and overseas. Now operating from a designated 50m long enclosed refit facility beside Vessel Works, Regan Woodward and Mark Hanna's expertise are complemented by a staff of 45+ who are split between two bases in Tauranga and Auckland.



info@superyachtcoatings.com
www.superyachtcoatings.com

WPC Paints

Your one-stop paint shop, providing high performance coatings and technical expertise. High quality interior/exterior marine coatings, resins and a full range of paint-related consumables. Skilled technicians available for coating inspections, colour matching and advice. Stockists of Hempel, PPG Coatings, Jotun and 3M. Located near the waterfront in Auckland Ph +64 9 443 3430 and in Whangarei Ph +64 9 430 2414.



ordersakl@wpcpaints.co.nz
orderswhg@wpcpaints.co.nz
www.wpcpaints.co.nz

SAFETY

Training 4 Safety Ltd

Ph: +64 9 430 0498

Training 4 Safety is a member of NZ Marine and is accredited by Maritime NZ to deliver the international STCW marine safety course. Apart from this ocean-specific course, we also provide safety training to land-based companies within the marine industry like marine engineers, boat builders, ports, marinas, ferries, and commercial fishing operations.



hello@training4safety.co.nz
www.training4safety.co.nz

Survitec Group

Ph: +64 9 373 2019

Survitec Group is an exclusive distributor for many leading brands of safety products such as RFD, DSB, Zodiac, Comet pyrotechnics, RFD and Crewsaver lifejackets. Offering sales and servicing support right across the country and in the Pacific Islands we are the only firm with a true nationwide safety focus.



rfdnz.sales@survitecgroup.com
www.rfd.co.nz

Wilco Marine Services

Ph: +64 9 308 9165

Wilco Marine Services is a specialist in coastal, offshore and commercial liferafts, inflatable boat tenders and RHIB's, and marine safety and survival equipment. We offer a complete liferaft testing and packing service as well as a professional repair service for all brands of inflatable boats and lifejackets, ACR EPIRB and PLB servicing.



sales@wilcomarineservices.co.nz
www.wilcomarineservices.co.nz



Larnach Castle, Dunedin, Otago



Queen Charlotte Track, Marlborough Sounds

TENDERS

Lloyd Stevenson Boatbuilders

Ph: +64 9 274 7680

Lloyd Stevenson Boatbuilders for beautifully crafted custom superyacht tenders - sports tenders, dive tenders, landing craft or owner's limousine, we will work together with your team to design and build a tender that meets your requirements – exactly.



info@lsb.co.nz
www.lloydstevenson-yachts.co.nz

Smuggler Marine Ltd

Ph: +64 9 838 9024

Smuggler Marine create fibreglass Strata RIB tenders and amphibious RIBs. Custom finishing allows owners to put their own touches on their tender. All models have been tested on the water, so you can rest assured you are getting a tender which rides exceptionally well, is practical, comfortable and stylish.



info@smuggler.co.nz
www.smuggler.co.nz

Protector Boats

Ph: +64 576 7373

Protector RIBs are globally renowned for their unmatched capability and durability. We specialise in crafting custom tenders, ranging from 25ft-41ft, tailored to your exact needs. Built tough with Protector's high-quality precision craftsmanship, the Protector offers a highly equipped, high-speed, ultra-comfortable adventure boat, ideal for both rugged commutes in any weather and luxurious all-day on-water experiences.



taryn@rayglass.co.nz
www.protectorboats.com

Wilco Marine Services

Ph: +64 9 308 9165

Wilco Marine Services is a specialist in coastal, offshore and commercial liferafts, inflatable boat tenders and RHIB's, and marine safety and survival equipment. We offer a complete liferaft testing and packing service as well as a professional repair service for all brands of inflatable boats and lifejackets, ACR EPIRB and PLB servicing.



sales@wilcomarineservices.co.nz
www.wilcomarineservices.co.nz

Hiking on the Mount Arthur Ridge in Kahurangi National Park



OTHER SERVICES

BUNKERS by Catalano

Ph: +64 21 409 802

Catalano Shipping, Well-established local yacht agency offering competitively priced duty free clean, high-quality fuel and lubricants with fast and streamlined delivery to superyachts cruising in New Zealand and the South Ocean. Priority Bunkers across New Zealand and the Pacific. Biofuel, AdBlue and Jet Fuel options available. AGents by Catalano – A worldwide network like no other.



duthie@catalanoshipping.com
www.catalanoshippingpacific.com

Gull NZ

Ph: +64 9 489 1452

At Gull, understanding the flexibility required when bunkering vessels comes as second nature. Timing & logistics are all managed and delivered with a personal service. Gull offers bunkering in all major ports around New Zealand. We carry a full range of lube oils catering to superyachts, cruising craft and commercial vessels.



courtk@gull.nz
<https://gull.nz/>

Hesketh Henry

Ph: +64 9 375 8700

We provide expert support to the marine industry in New Zealand on a timely and cost-effective basis. Our lawyers are leaders in their field with extensive domestic and international experience. We advise marina owners and operators on commercial contracts, disputes, health & safety, insurance, management and ownership structures, and property.



tamar.hart@heskethhenry.co.nz
www.heskethhenry.co.nz

Sevenstar Yacht Transport

Ph: +64 21 512 353

Sevenstar Yacht Transport connects New Zealand and Australia with Europe and the USA through frequent sailings, using our own specialized fleet to ship yachts of all sizes. We offer seasonal sailings between the Southern and Northern Hemispheres, ensuring seamless transport for your yacht year-round.



alisha@sevenstar-newzealand.com
www.sevenstar-yacht-transport.com



Cape Kidnappers, Hawkes Bay

The Produce Company

Ph: +64 9 634 8320

Unbeatably Fresh! Full-Service provisioning, delivering the world's finest foods throughout South Pacific and Asia. Sourcing and delivering the finest fresh and speciality products, sourced from trusted local suppliers, suitable for even the most sophisticated palate. Our dedicated team of experts endeavour to fulfil all your F&B requirements.



superyachts@produce.co.nz
www.produce.co.nz

TNL Pindar

Ph: +64 21 289 7744

TNL Pindar is the go-to provider of integrated specialist services for the marine leisure sector, including yacht and boat transportation, superyacht services, air, sea and road freight, yacht spares logistics and Customs agency. Richard Thorpe, Manager Australasia, offers years of experience and his team ensure every shipment is treated professionally and honestly.



richard@tnlpindar.com
www.tnlpindar.com

Ultralon Foam Group

Ph: +64 3 389 4325

U-Dek anti-slip, closed-cell foam deck treads offer a hard-wearing, easy to maintain alternative to moulded in anti-slip or paint-on textures for traction in wet areas. Customised for your vessel. Manufacturers of closed-cell EVA foam boat, dock and superyacht fenders, offering maximum protection. Won't puncture, deflate or sink.



sales@ultralon.co.nz
www.udek.co.nz

VMG Clothing

Ph: +64 9 303 0013

VMG Clothing - Proud to dress the world's best for over 27 years! From superyachts to corporates we offer an extensive ongoing stock range and a custom "design and build" uniform service. Just mention this directory to receive initial concept design boards, free of charge.



sales@vmgclothing.com
www.vmgclothing.com

YOA Yacht Crew

Ph: +64 211 083 629

YOA is New Zealand's premier superyacht recruitment agency. With 7 agents based locally and an additional 10 globally, all of whom have held senior positions as Captains or HODs, we truly understand your needs. Our unique technology and techniques enable us to present top-quality candidates without compromising on quality or due diligence.



www.yoacrew.com
www.yoaagency.com



Castlepoint, Wairarapa, Miles Holden





Publishers:

NZ Marine Industry Association and NZ Marine Export Group
Executive Director/CEO Peter Busfield
Editor Caroline Gibson

Contributors (including images):

Tourism New Zealand, Auckland Unlimited, Northland Inc, Destination Queenstown, Destination Marlborough, Great South, Nelson Regional Development Agency, Robertson Lodges, NZ Fishing News, Ivor Wilkins, NZ Wines, Scott Venning, Isla McKechnie Albatross PR, Miles Holden, Nelson Tasman Tourism/Barefoot Kiwi and Bay of Plenty Tourism

Design by:

Debra Tunnicliffe; debs@boatingnz.co.nz

Printed by:

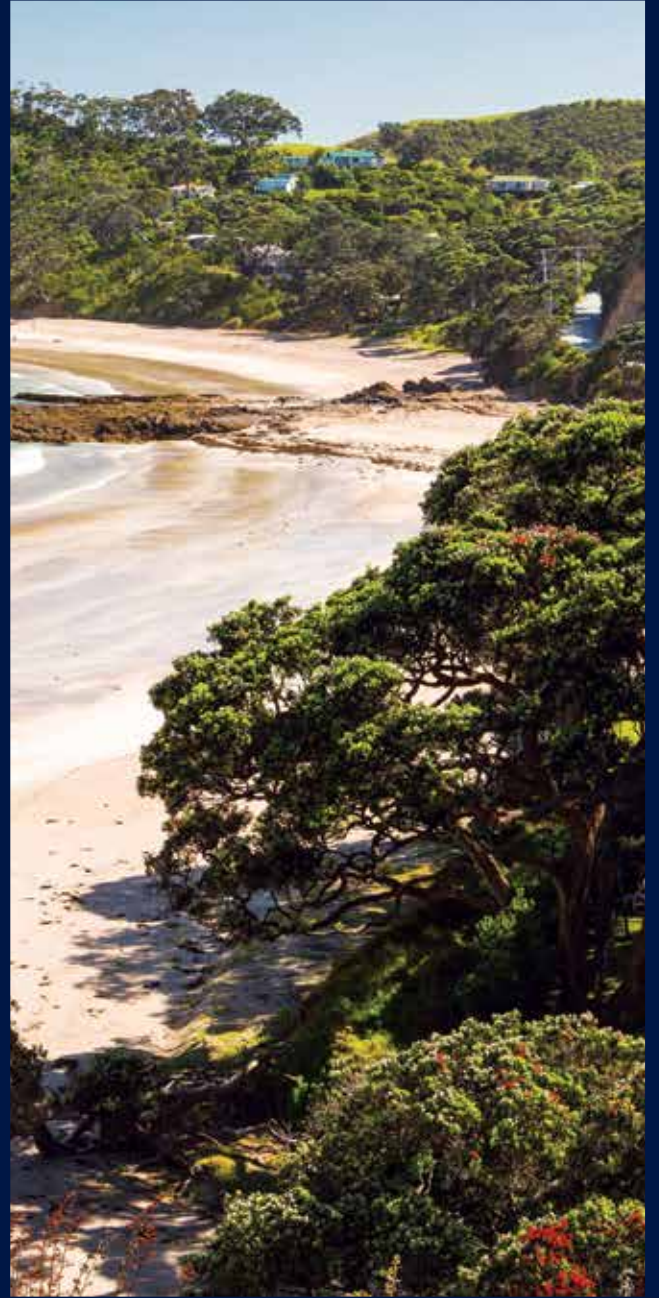
Benefitz

For further information:

nzmarine.com
superyachtnewzealand.co.nz
Newzealand.com/luxury

Download the Destination NZ app from the App Store or Google Play

© Copyright Destination & Cruising New Zealand 2024. All rights reserved.




NZmarine
INDUSTRY ASSOCIATION

**100% PURE
NEW ZEALAND**

**SUPERYACHT
NEW ZEALAND** 