



— THE FUTURE IS —
S U P E R B™





CONVENTIONAL WISDOM SAYS:

Urban living requires compromise.

Technology complicates life.

Luxury and sustainability are opposing forces.

Community comes at the cost of privacy.

Wellness is a luxury, not a standard.

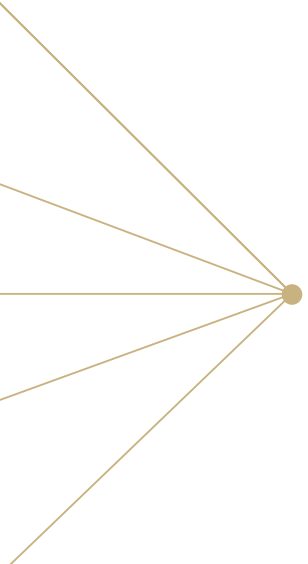


CONVENTIONAL WISDOM IS WRONG.

At Superb Realty, we've engineered
a fundamentally different approach to
urban development, one that transforms
these false dichotomies into
harmonious complements.

This is innovation with purpose.





We've discovered that extraordinary spaces emerge when our four core elements align in perfect balance. This is the foundation of every Superb Realty Development.



THE SUPERB WAY

Every element within the Superb Realty logo has been thoughtfully chosen to reflect the brand's core values. Carefully composed and purposefully integrated, these facets come together to form a distinctive emblem, one that captures the essence of Superb Realty: innovative, balanced, and future-ready.



OUR IDENTITY

Four points forming our distinctive 'S' constellation visualise our identity:

Innovation & Technology: We challenge assumptions and reimagine possibilities, harnessing systems that anticipate needs, simplify life, and create seamless, future-ready experiences.

Design: We embrace clean lines, timeless materials, and forward-thinking aesthetics that feel contemporary yet enduring.

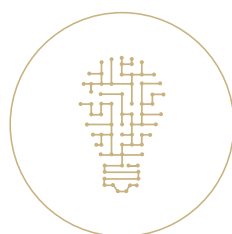
Sustainability: We integrate responsible building practices, resource efficiency, and green innovations into every project, ensuring progress that is both ethical and future-proof.

Wellness & Holistic Living: We prioritise physical, mental, and social wellness in every design decision, from biophilic elements to community spaces.

These four points don't exist in isolation, they form a constellation that guides every decision, illuminating the path to truly exceptional spaces.



LETTER 'S'



INNOVATION &
TECHNOLOGY



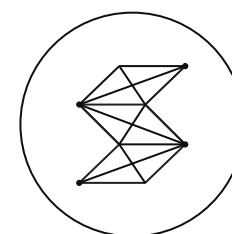
DESIGN



SUSTAINABILITY

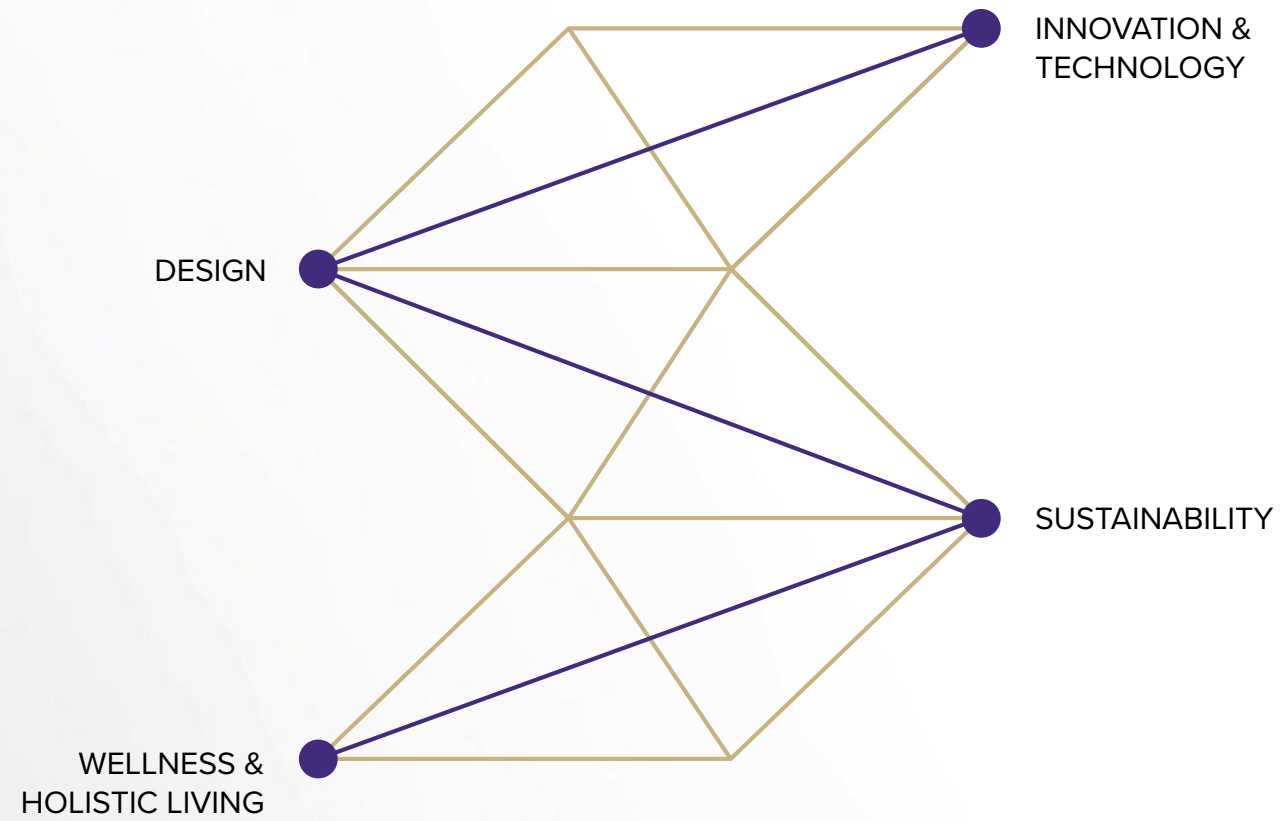


WELLNESS &
HOLISTIC LIVING



OUR SYMBOL







WHAT MAKES US TRULY SUPERB

1 Design-Led Development

Distinctive, boutique-scale projects driven by thoughtful architecture and aesthetic precision.

2 Integrated Sustainability & Wellness

Holistic environments that prioritise green building practices, biophilic design, and occupant well-being.

3 Technology-First Execution

Intelligent systems and smart infrastructure embedded across construction, operations, and everyday living.



4 Products for the Evolved Urbanite

Future-ready homes and workspaces designed to meet the aspirations of discerning urban dwellers.

5 Brand & Experience Strategy

Curated experiences; focused on community, utility, and emotional connection.

6 Radical Transparency & Trust

Ethical practices and open communication that foster long-term credibility and confidence.





WE CREATE SUPERB SPACES

Every Superb Realty development transforms the ordinary into the extraordinary, creating environments where our four pillars converge to elevate daily life:

Living Spaces: Where technology enhances tranquility and design fosters well-being.

Working Spaces: Where productivity and wellness coexist in perfect harmony.

Community Spaces: Where meaningful connections form naturally.

This is how we transform square footage into experiences, creating environments where life flourishes in its fullest expression.





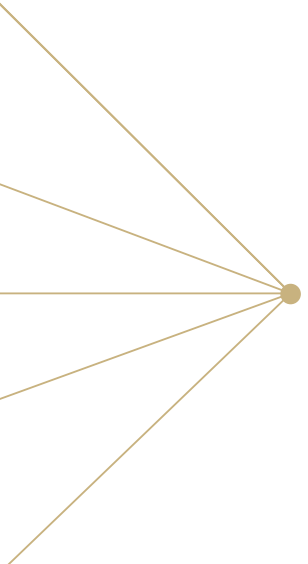


STRIKING A BALANCE THAT'S SUPERB

The Superb Realty approach demonstrates that apparent contradictions can become powerful complements:

Technology & Humanity: Our spaces leverage cutting-edge innovation not to replace human connection, but to enhance it, creating environments where technology works invisibly to foster more meaningful interactions.

Privacy & Community: Our designs create a seamless flow between private sanctuaries and vibrant communal spaces, recognising that both solitude and connection are essential to well-being.

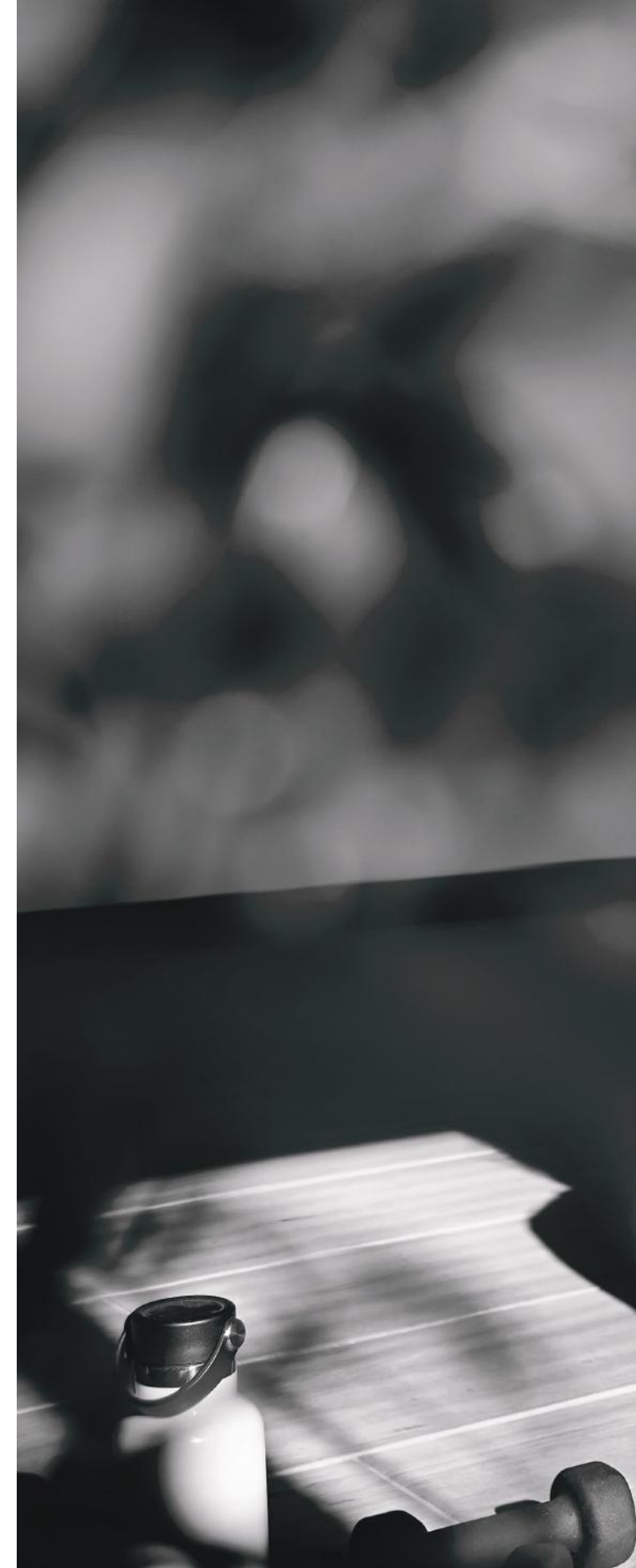


Wellness & Urban Living: In our developments, urban energy and personal well-being enhance one another.

Carefully calibrated environments balance stimulation and serenity, creating spaces where residents feel both energised and grounded, even in the midst of city life.

Efficiency & Aesthetic: We prove that functional excellence and aesthetic refinement aren't competing priorities but complementary forces, creating spaces that function seamlessly while inspiring the senses.

This philosophy of balance creates environments that don't just meet needs, they transcend expectations.



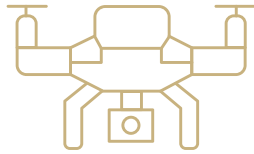




WE THRIVE WITH TECHNOLOGY

At Superb Realty, technology is never an afterthought, it's integrated from conception to completion. Our tech-forward approach enhances every touchpoint:





CONSTRUCTION EXCELLENCE

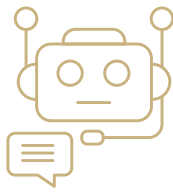
- Modular and prefab construction for precision and reduced environmental impact
- Drone-led site monitoring ensuring safety and accuracy
- BIM (Building Information Modeling) for smarter planning, budgeting and execution



INTELLIGENT OPERATIONS

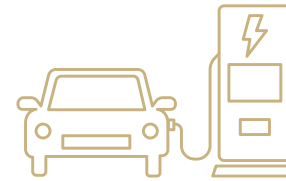
- Digital twin technology optimising building performance
- IoT-enabled systems monitoring energy, water, and environmental quality in real-time





SEAMLESS EXPERIENCES

- Immersive VR walk-throughs for seamless discovery
- AI-powered CRM tools and lead scoring for personalised engagement
- WhatsApp and voice bot-based concierge services for ease and accessibility



CUSTOMER EXPERIENCE

- Resident experience apps for community management and service access
- Smart lockers, EV charging stations, and digital access systems for convenience and sustainability





A LEGACY THAT BUILDS FORWARD.

The Beginning: Tater World

Every innovation needs a solid foundation. The Superb Realty approach is built upon the rich legacy of Tater World, founded in 1981 by visionary brothers.

Shri Khyalilal Tater and Late Shri Jitendra Tater

What began as a modest family enterprise grew into a diversified conglomerate, known for its integrity, craftsmanship, and community-first ethos, creating enduring value across generations.



The Expansion: The Group's Evolution

Guided by a belief that progress must be both responsible and visionary, Tater World expanded its footprint across industries, from jewellery and retail to real estate. Each new venture reflected the same commitment to quality and trust that defined its origins.

A Defining Milestone: Skyline Group

As part of this evolution, Skyline Group, established in 2001, emerged as a symbol of construction excellence and thoughtful design. With over three decades of experience, Skyline helped shape Mumbai's architectural landscape through smart engineering, ethical practices, and a deep understanding of urban life. Its dedication to creating functional, future-ready spaces laid the groundwork for what was to come.

The Future Built on Legacy: Superb Realty

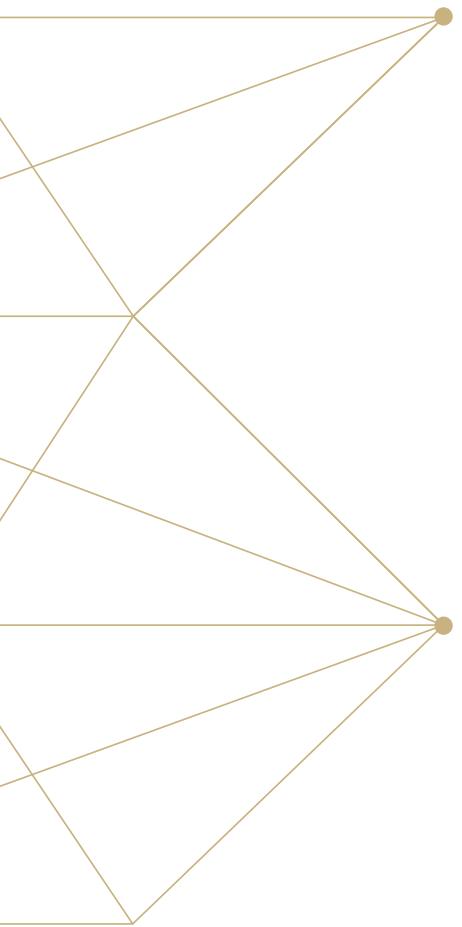
Today, Superb Realty carries this legacy forward, reinterpreting decades of experience through the lens of innovation, sustainability, and balance. What began with a vision to enrich lives has evolved into a future-ready brand that redefines urban living with purpose, empathy, and excellence. This legacy is the solid foundation that enables us to innovate with confidence and purpose. Understanding our roots helps illuminate why our approach to urban development is both revolutionary and sustainable, it's built on decades of trust, excellence, and vision.



A LEGACY OF VISION. A JOURNEY OF INNOVATION.

From a modest beginning in 1981 to redefining urban development today,
our story is one of resilience, foresight, and an unwavering commitment to excellence.
Each milestone has strengthened the foundation on which Superb Realty stands,
a future-ready brand built on decades of trust and purposeful growth.





THE ARCHITECTS OF OUR LEGACY



In honour of Late Shri Jitendra Tater

A visionary, a mentor, and the force behind Tater World's foray into real estate.

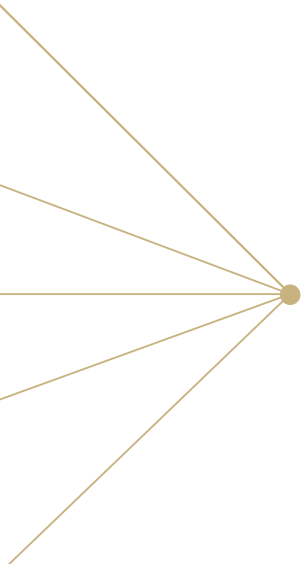
Late Shri Jitendra Tater will always be remembered for his principled leadership and transformative vision.

With a rare blend of pragmatism and purpose, he transformed a modest jewellery business into a diversified conglomerate and established Skyline in 2001, expanding the family legacy beyond jewellery. His values continue to guide Tater World's beliefs and aspirations, shaping a future built on innovation, responsibility, and community upliftment.



**LATE SHRI
JITENDRA TATER**

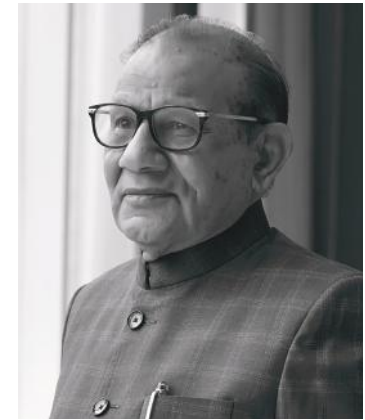
(YOUNGER BROTHER OF
SHRI KHYALILAL TATER)
FOUNDING VISIONARY



A humble visionary guided by purpose, **Shri Khyalilal Tater** is the driving force behind Tater World's evolution into a trusted and respected enterprise. From his modest beginnings in Rajasthan to building a diversified business in the heart of Mumbai, his journey is one of resilience, foresight, and determination.

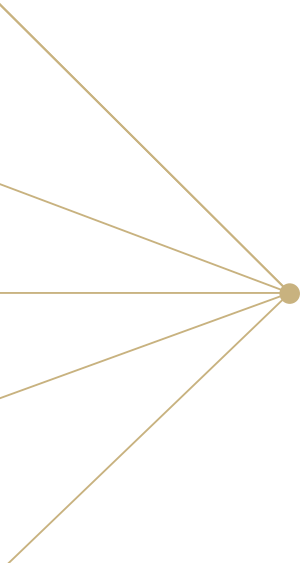
His efforts made Tater World synonymous with quality across real estate, jewellery, and other businesses.

With an appetite for innovation paired with a deep commitment to social good, he has moulded the organisation's DNA. Under his stewardship, growth was never just a business metric, it was a means to create lasting value for society.



**SHRI
KHYALILAL TATER**

CHAIRMAN EMERITUS,
TATER WORLD



Effortlessly astute, **Shri Shilpin Tater** stands at the forefront – leading Tater World into a bold new era of growth and technology-driven transformation. Active in real estate for over 18 years, he has been instrumental in building Skyline Group into a trusted name in Mumbai’s property landscape. With a keen understanding of the city’s evolving real estate dynamics, he has reimagined the company’s portfolio to align with the aspirations of a modern, discerning clientele. His vision combines sharp business acumen with a passion for thoughtful design and future-ready development. Working alongside his father, Shri Khyalilal Tater, he remains deeply rooted in the legacy of the brand while redefining its future. Under his guidance, Tater World continues to evolve, driven by a vision that balances heritage with future-readiness. The launch of Superb Realty represents the culmination of his forward-thinking vision – a brand that embodies his belief that urban living shouldn’t demand compromise. As the driving force behind Superb Realty, he continues to evolve the family legacy with an approach that balances innovation, sustainability, and wellness – shaping a new benchmark for urban living. With Superb Realty in his able hands, the future of urban development in Mumbai is poised for a remarkable transformation – one that honours the Tater World legacy while boldly reimagining what’s possible.



SHRI
SHILPIN TATER

MANAGING DIRECTOR,
SUPERB REALTY

PROJECTS THAT DEFINE US.

Our projects embody the philosophy that urban living should not demand compromise. Each development has been a step forward, blending technology, design, sustainability, and community into spaces that inspire.

2003 SKYLINE OASIS

Spacious residences designed to bring modern comforts to everyday life.



2005 SUNCITY (PHASE 1)

A large-scale residential community built around lifestyle and convenience.



2013 SKYLINE STATUS

A landmark commercial tower in Ghatkopar East, an iconic building featuring one of the largest jewellery stores.

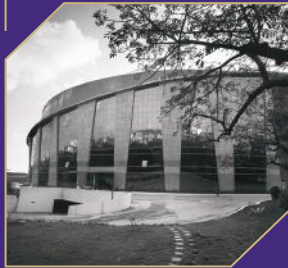


2015 SKYLINE VIHA

Modern homes that combine thoughtful layouts with community living.

2006 SKYLINE ICON (PHASE 1)

Premium commercial spaces redefining the experience of business environments.



2007 SKYLINE WEALTH SPACE

A future-ready workspace integrating efficiency with contemporary design.



2007 SKYLINE EPITOME

A landmark commercial address offering functional offices near Vidyavihar station.



2013 GOLDCREST BUSINESS PARK

A Grade-A business destination tailored for ambitious enterprises.



2013 SKYLINE SPARKLE

Boutique residences crafted to blend elegance with everyday functionality.



2019 SAPPHIRE BUSINESS ANNEXE

A contemporary business hub created for the new age of commerce.



2020 SKYLINE MAGNUS

A sophisticated residential landmark, offering modern amenities and elevated urban living experiences.



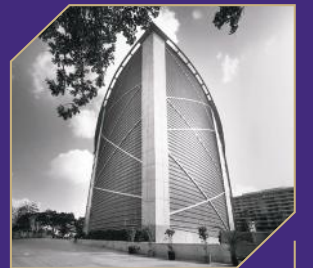
2022 SUNCITY (PHASE 2)

Offering residences with modern amenities, stylish interiors, and seamless access to everyday conveniences.



2023 SKYLINE ETERNAL BLISS

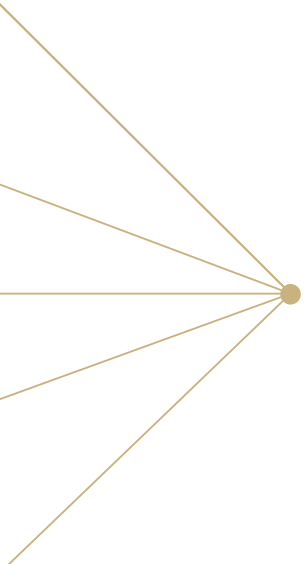
A thoughtfully crafted premium residential experience, blending comfort, convenience, and vibrant community living.



2024 SKYLINE ICON (PHASE 2)

A modern landmark featuring large office spaces that houses top corporates and MNCs.

Each of these milestones has shaped the foundation upon which Superb Realty now stands, carrying forward a legacy of integrity, innovation, and excellence into the future of urban living.

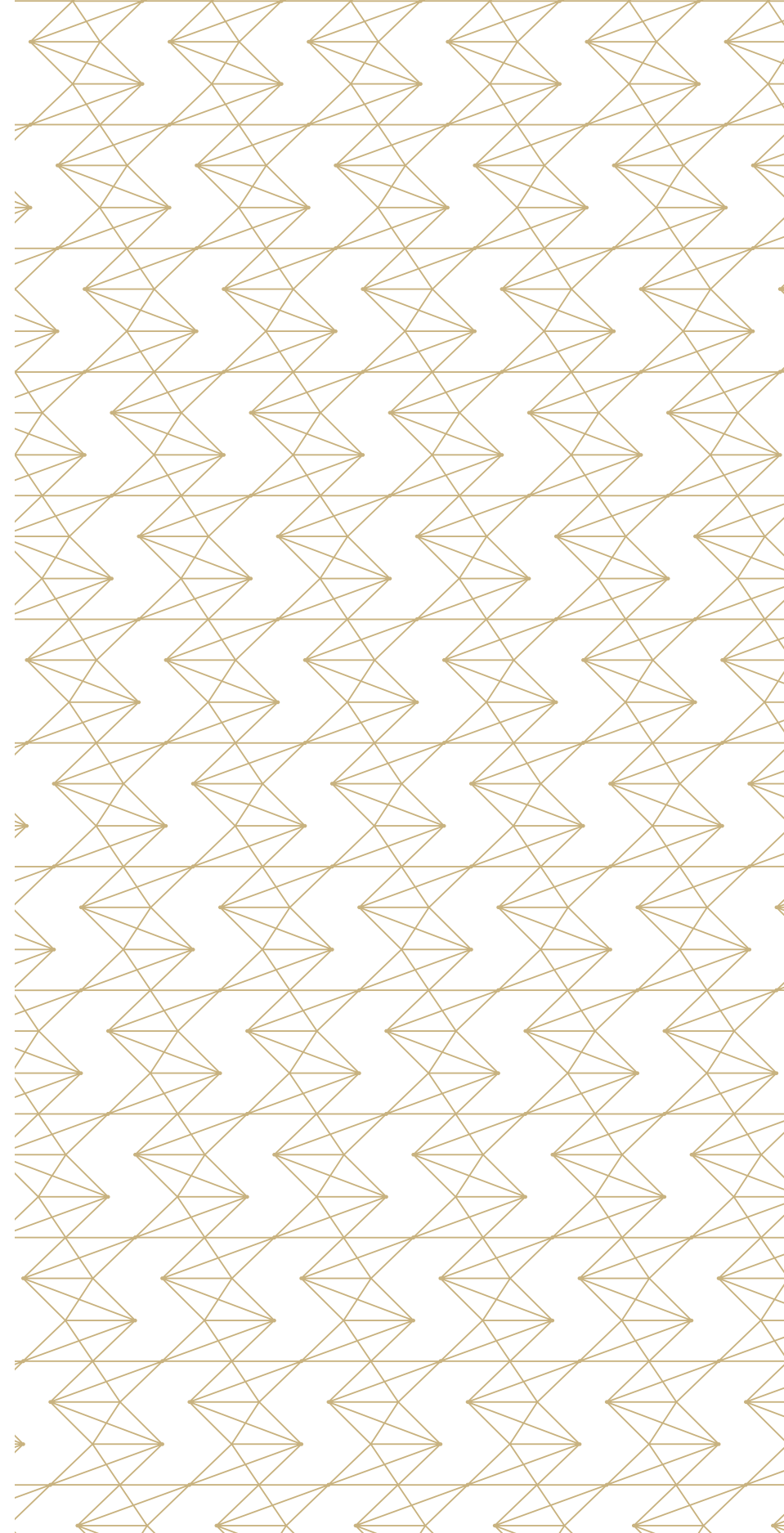


Words and images can only convey so much. The true essence of Superb Realty must be experienced through the way light interacts with space, revealing thoughtful design, intuitive technology, and a sense of well-being that permeates our spaces.

We invite you to discover the Superb difference firsthand.

Whether you're considering a home, a workspace, or a partnership, we welcome the opportunity to share our vision and demonstrate how we're redefining urban living.

The future is here. And it's Superb Realty.







EXPERIENCE THE SUPERB DIFFERENCE

At Superb Realty, we believe the true measure of a space lies in how it makes you feel — balanced, inspired, and connected. Every detail we design reflects a commitment to innovation, sustainability, and well-being, creating environments where modern living finds its perfect harmony.

We invite you to explore our spaces, experience our philosophy, and discover what makes urban living truly Superb.

Discover more at www.superbrealty.in |    Superbrealty.in

Address:

6th Floor, Sapphire Business Annexe, M.G. Road, Ghatkopar East, Mumbai - 400077.