

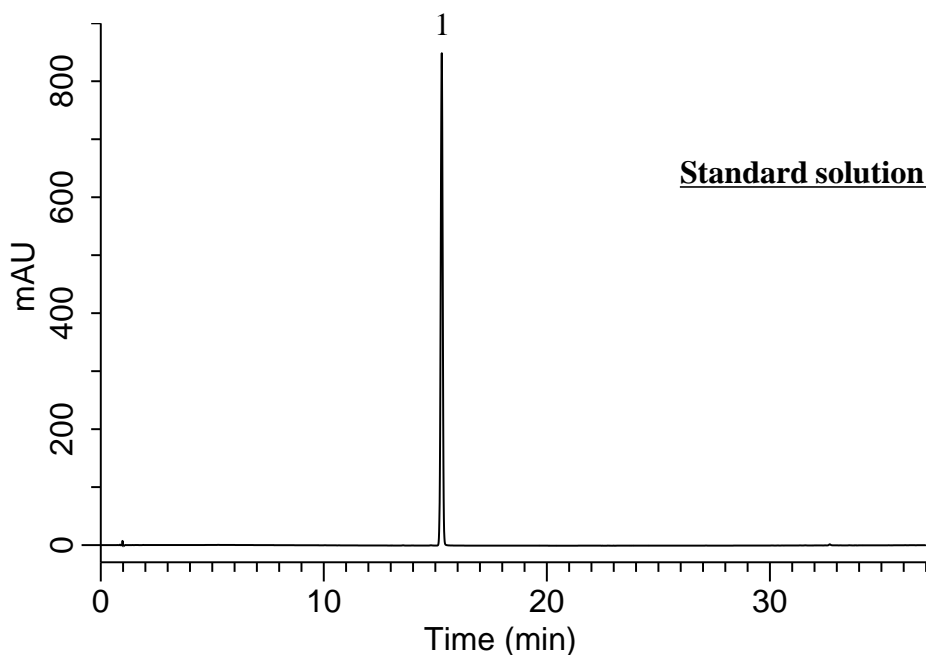
# InertSearch for LC

Inertsil Applications

## Analysis of Rivaroxaban

(Under the Condition of draft for USP)

Data No. LB633-0871



### Conditions

**System** : GL7700 HPLC system  
**Column** : InertSustainSwift C18  
(3.5  $\mu$  m, 150 x 3.0 mm I.D.)  
**Column Cat. No.** : 5020-  
**Eluent** : A) CH<sub>3</sub>CN  
B) CH<sub>3</sub>OH/Buffer\* = 5/95, v/v

Time (min)	A (vol%)	B (vol%)
0.0	2	98
2.0	2	98
8.0	16	84
25.0	36	64
37.0	80	20
37.1	2	98
50.0	2	98

**Flow rate** : 1.0 mL/min  
**Col. Temp.** : 60 °C  
**Detection** : UV 250 nm (PD7752 PDA Detector)  
**Injection Vol.** : 3  $\mu$  L  
**Sample** : Standard

### Analyte:

1. Rivaroxaban 500 mg/L

Symmetry factor : 0.96 ( $\leq$  2.0)  
RSD of the peak area (%) (n=6) : 0.19 ( $\leq$  0.73)

### 【NOTE】

Operating pressure often exceeds 20 MPa.  
In that case, the column will not be immediately unavailable, but its lifetime may be a little shorter.

\* Dissolve 1.36 g of potassium dihydrogen phosphate, 1 g of sodium hexanesulfonate, and 200  $\mu$  L of phosphoric acid in water. Dilute with water to 1 L.