

Project Name

397 PRINCESS ST,
KINGSTON, ON

Address

397 PRINCESS ST,
KINGSTON, ON

Notes

This plan has been created from a Matterport MC250 Pro2 (accurate within +/- 2% within 15' from scan positions).

While every attempt has been made to ensure the accuracy of the plan, Sky Sight Aerial Solutions Inc. assumes no liability for any errors, omissions, or misstatements. This plan is for illustrative purposes and should only be used as such.

No.	Revision/Issue	Date

Project Name

397 PRINCESS ST,
KINGSTON, ON

Project Type

GROUND FLOOR PLAN

Date _____

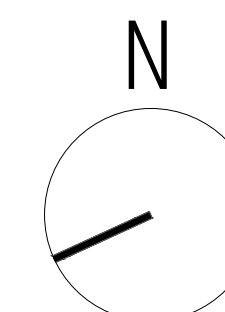
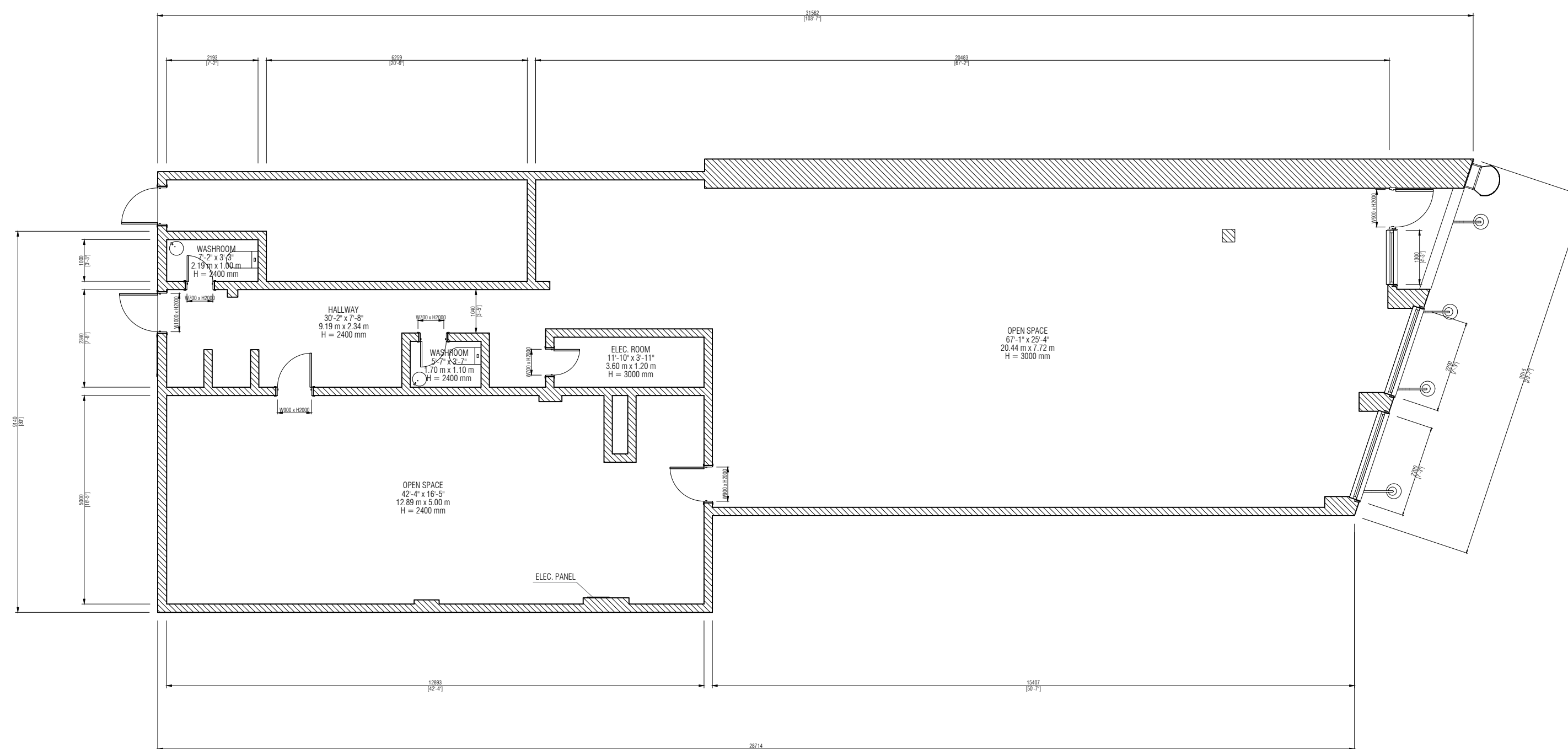
01 - 25 - 2023

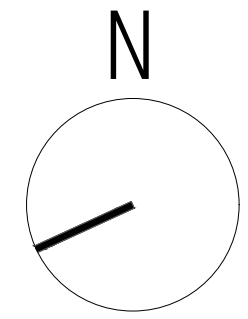
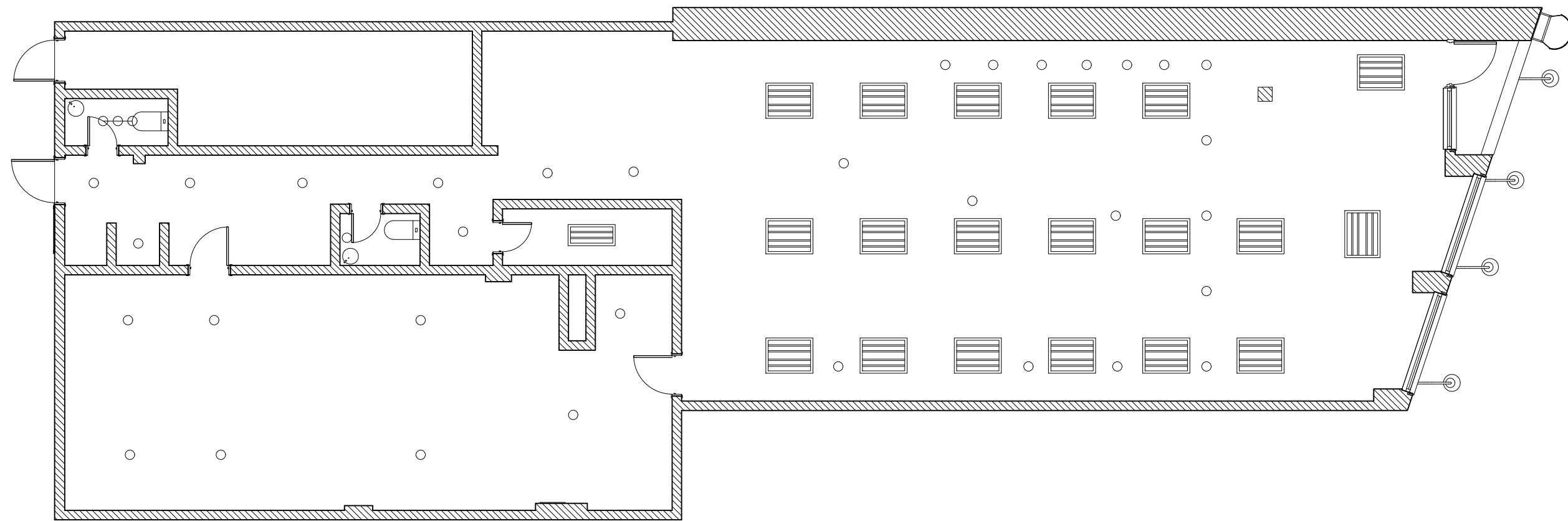
Scale

1:100

Sheet Number

A2





Project Name

397 PRINCESS ST,
KINGSTON, ON

Address

397 PRINCESS ST,
KINGSTON, ON

Notes

This plan has been created from a Matterport MC250 Pro2 (accurate within +/- 2% within 15' from scan positions).

While every attempt has been made to ensure the accuracy of the plan, Sky Sight Aerial Solutions Inc. assumes no liability for any errors, omissions, or misstatements. This plan is for illustrative purposes and should only be used as such.

No.	Revision/Issue	Date

Project Name

397 PRINCESS ST,
KINGSTON, ON

Project Type

REFLECTED CEILING PLAN

Date

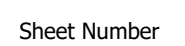
01 - 25 - 2023

Scale

1:100

Sheet Number

A3

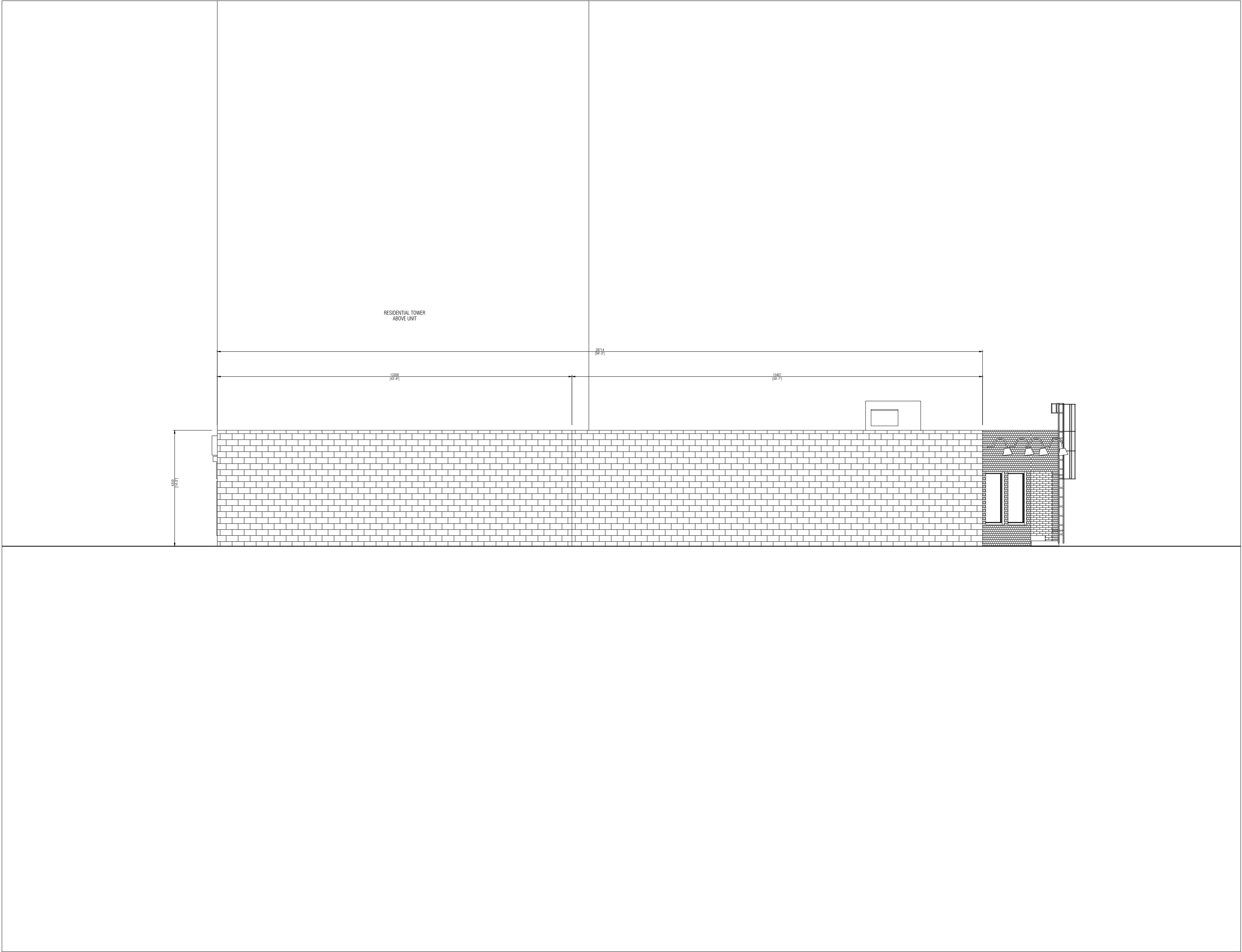


ADJACENT
COMMERCIAL UNITS

Technical drawing of a kitchen layout showing a brick wall with two square windows and four pendant lights. The drawing includes dimensions for the wall, windows, and the distance between them. A door is visible on the right side of the wall.

Dimensions shown in the drawing:

- Overall wall height: 2000
- Overall wall width: 2000
- Window height: 800
- Window width: 800
- Distance between windows: 800
- Distance from wall to door: 1300
- Door width: 900



Project Name

397 PRINCESS ST,
KINGSTON, ON

Address

397 PRINCESS ST,
KINGSTON, ON

Notes

This plan has been created from a Matterport MC250 Pro2 (accurate within +/- 2% within 15' from scan positions).

While every attempt has been made to ensure the accuracy of the plan, Sky Sight Aerial Solutions Inc. assumes no liability for any errors, omissions, or misstatements. This plan is for illustrative purposes and should only be used as such.

No.	Revision/Issue	Date

Project Name

397 PRINCESS ST,
KINGSTON, ON

Project Type

WEST ELEVATION

Date

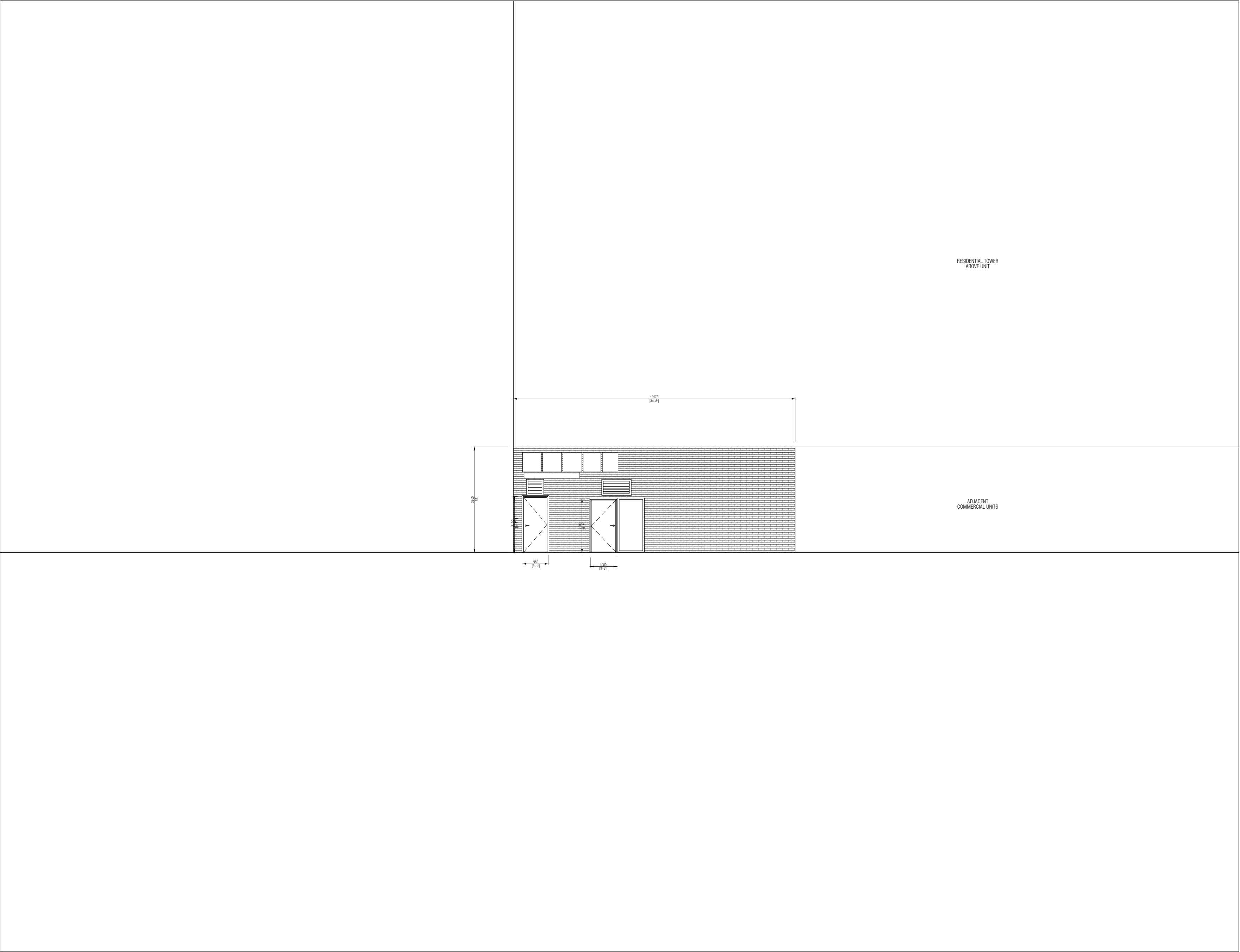
01 - 25 - 2023

Scale

1:100

Sheet Number

A6



Project Name

397 PRINCESS ST,
KINGSTON, ON

Address

397 PRINCESS ST,
KINGSTON, ON

Notes

This plan has been created from a Matterport MC250 Pro2 (accurate within +/- 2% within 15' from scan positions).

While every attempt has been made to ensure the accuracy of the plan, Sky Sight Aerial Solutions Inc. assumes no liability for any errors, omissions, or misstatements. This plan is for illustrative purposes and should only be used as such.

No.	Revision/Issue	Date

Project Name

397 PRINCESS ST,
KINGSTON, ON

Project Type

NORTH ELEVATION

Date

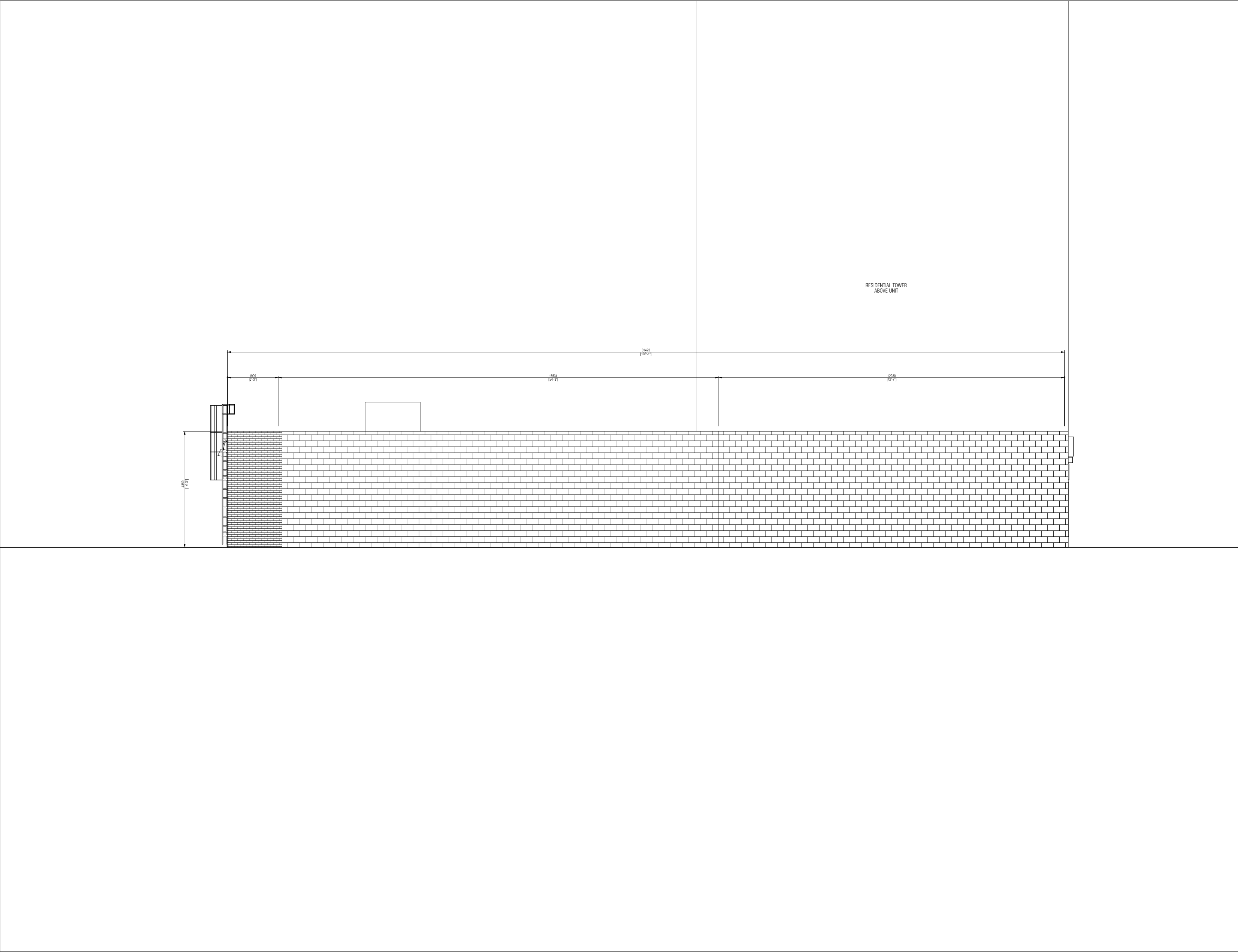
01 - 25 - 2023

Scale

1:100

Sheet Number

A5



Project Name

397 PRINCESS ST,
KINGSTON, ON

Address

397 PRINCESS ST,
KINGSTON, ON

Notes

This plan has been created from a Matterport MC250 Pro2 (accurate within +/- 2% within 15' from scan positions).

While every attempt has been made to ensure the accuracy of the plan, Sky Sight Aerial Solutions Inc. assumes no liability for any errors, omissions, or misstatements. This plan is for illustrative purposes and should only be used as such.

No.	Revision/Issue	Date

Project Name

397 PRINCESS ST,
KINGSTON, ON

Project Type

EAST ELEVATION

Date

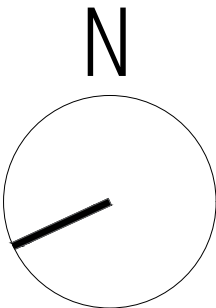
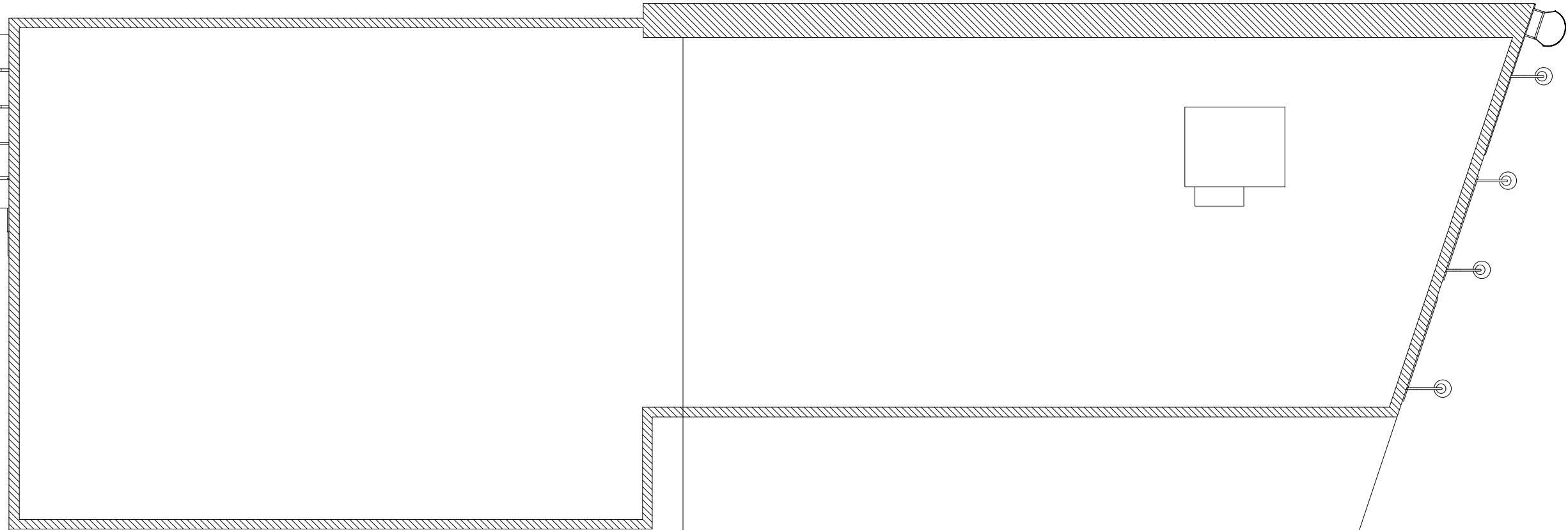
01 - 25 - 2023

Scale

1:100

Sheet Number

A8



Project Name

397 PRINCESS ST,
KINGSTON, ON

Address

397 PRINCESS ST,
KINGSTON, ON

Notes

This plan has been created from a Matterport MC250 Pro2 (accurate within +/- 2% within 15' from scan positions).

While every attempt has been made to ensure the accuracy of the plan, Sky Sight Aerial Solutions Inc. assumes no liability for any errors, omissions, or misstatements. This plan is for illustrative purposes and should only be used as such.

No.	Revision/Issue	Date

Project Name

397 PRINCESS ST,
KINGSTON, ON

Project Type

ROOF PLAN

Date

01 - 25 - 2023

Scale

1:100

Sheet Number

A4



Project Name

397 PRINCESS ST,
KINGSTON, ON

Address

397 PRINCESS ST,
KINGSTON, ON

Notes

This plan has been created from a Matterport MC250 Pro2 (accurate within +/- 2% within 15' from scan positions).

While every attempt has been made to ensure the accuracy of the plan, Sky Sight Aerial Solutions Inc. assumes no liability for any errors, omissions, or misstatements. This plan is for illustrative purposes and should only be used as such.

No.	Revision/Issue	Date

Project Name

397 PRINCESS ST,
KINGSTON, ON

Project Type

SITE PLAN

Date

01 - 25 - 2023

Scale

1:300

Sheet Number

A1