

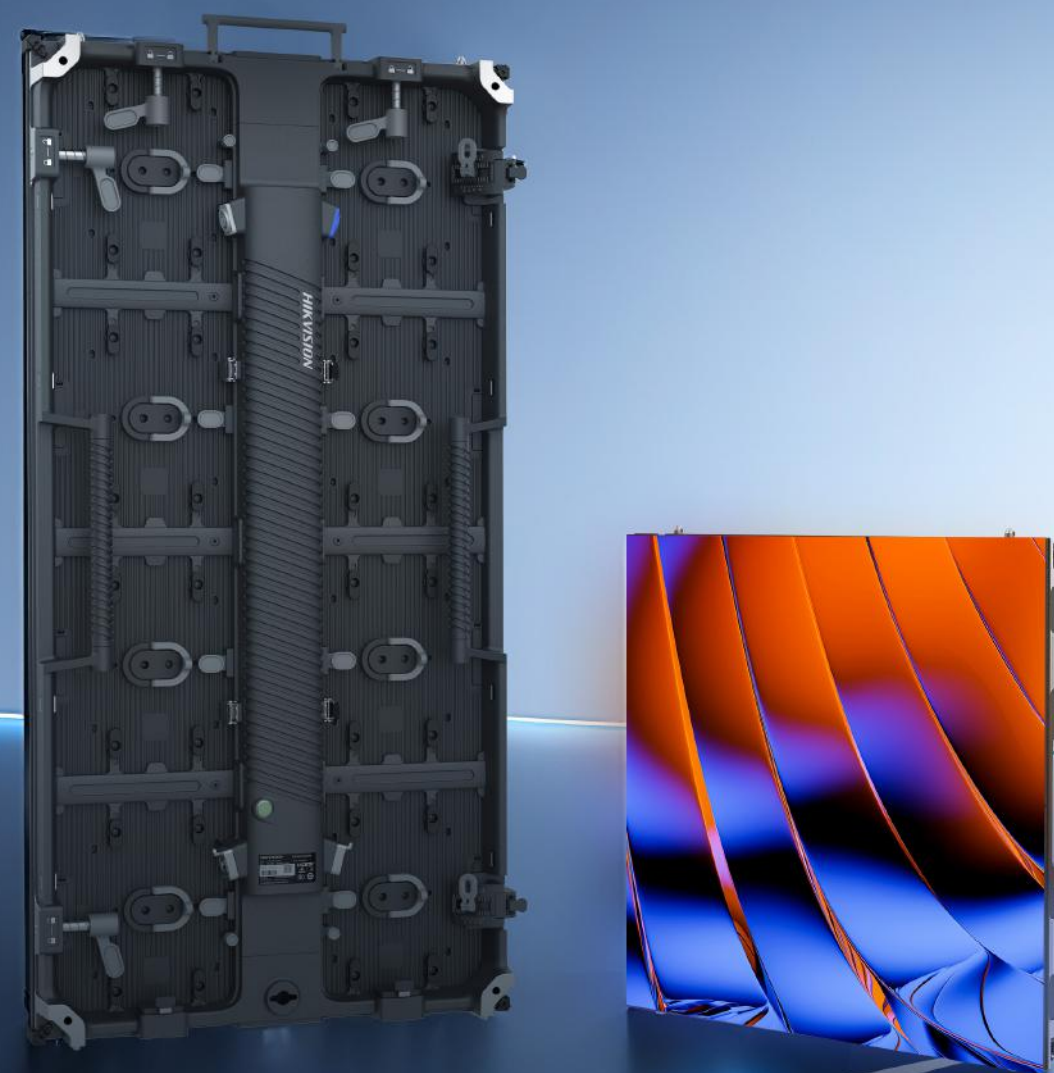
Aries Series  
LED Cabinets








HIKVISION®

# ARIES SERIES LED CABINETS

Rental

Brighten Every Moment



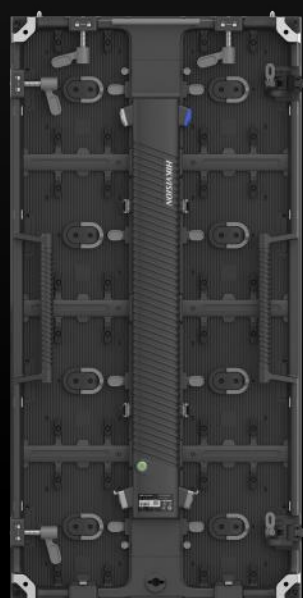
 Hikvision  HikvisionHQ  hikvisionoverseas  HikvisionOverseas  
 HikvisionHQ  Hikvision Corporate Channel  Hikvision Commercial Display

HIKVISION®

## Two Cabinet Sizes



500x500 mm Cabinet



500x1000 mm Cabinet

Ultra-Slim & Lightweight

69mm



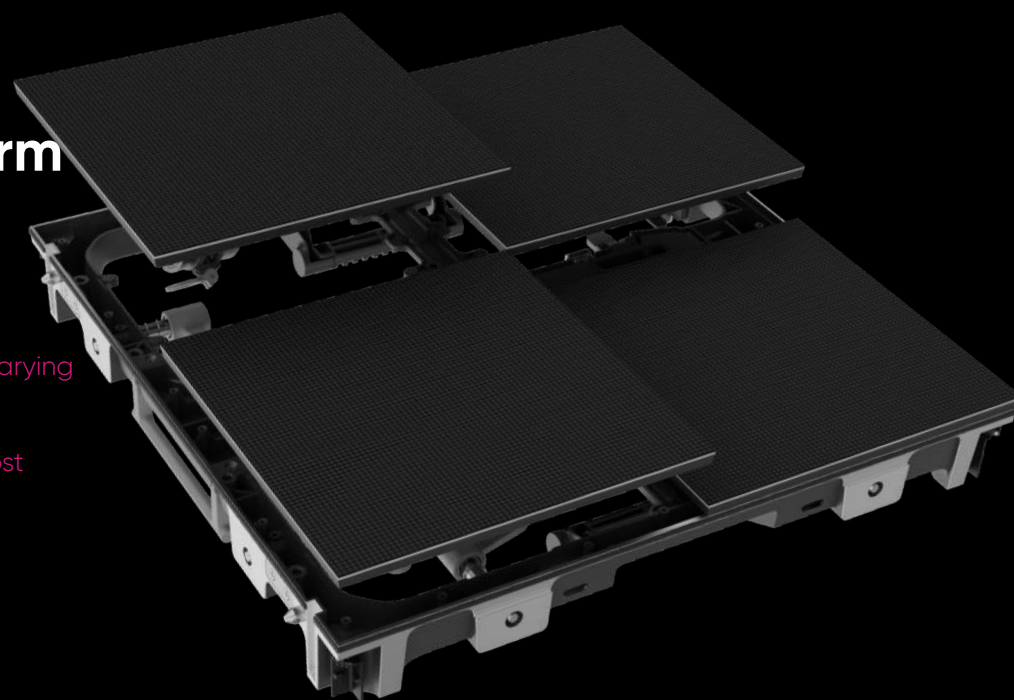
69mm



500x1000 mm <11kg    500x500 mm <7kg  
\*Incl. LED modules

## Unified Platform for Flexibility

Compatible with modules of varying pixel pitches, enabling flexible adjustments and improving cost efficiency



HIKVISION

## Easy Installation One Person Enough

Designed for one-person installation, eliminating complex steps and saving up to 1/3 of labor costs



**One Push**  
to lock and reinforce



**One Touch**  
to secure the latch



**One Click**  
to release the center pin

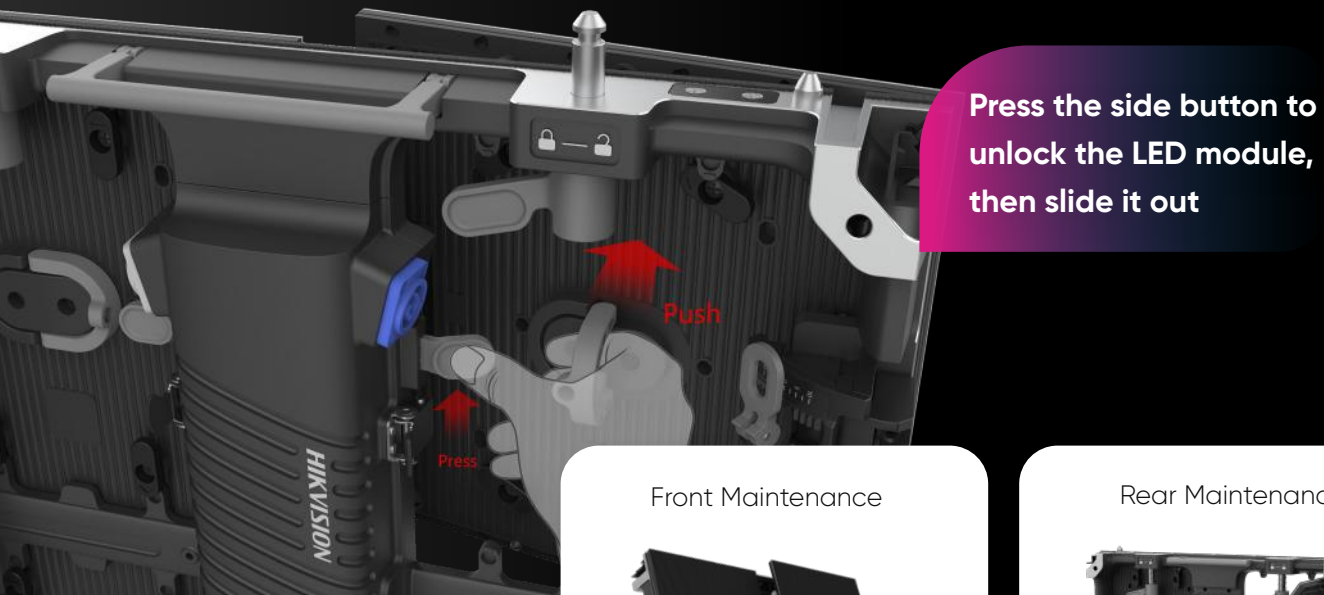


Magnetic top and bottom edges (optional)  
Automatically align, improving installation efficiency



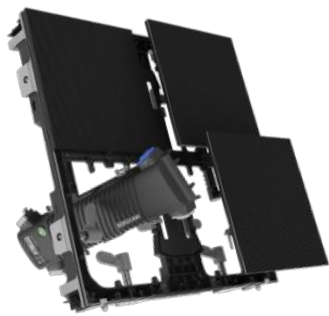


## Quick Fixes Anytime Anywhere



Front and Rear  
Maintenance for  
Continuous  
Protection ▶▶▶

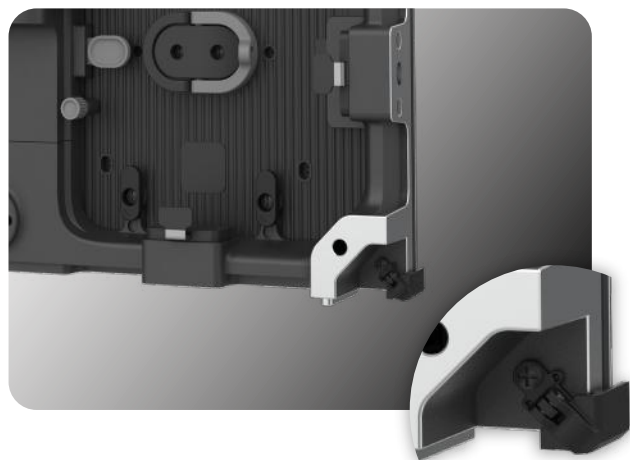
Front Maintenance



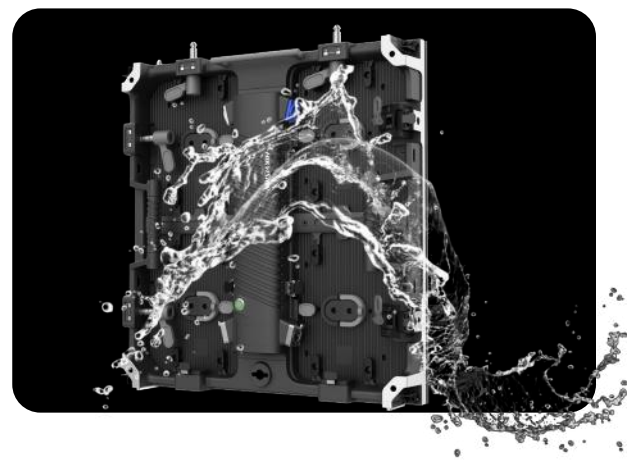
Rear Maintenance



## Built to Last Resistant to Wear



Anti-collision – Flip-over corner guards protect the LED module from impacts during transport



Water-proof – IP40 indoor, IP65 outdoor, perfect for all environmental conditions

## True-to-Life Colors within Reach

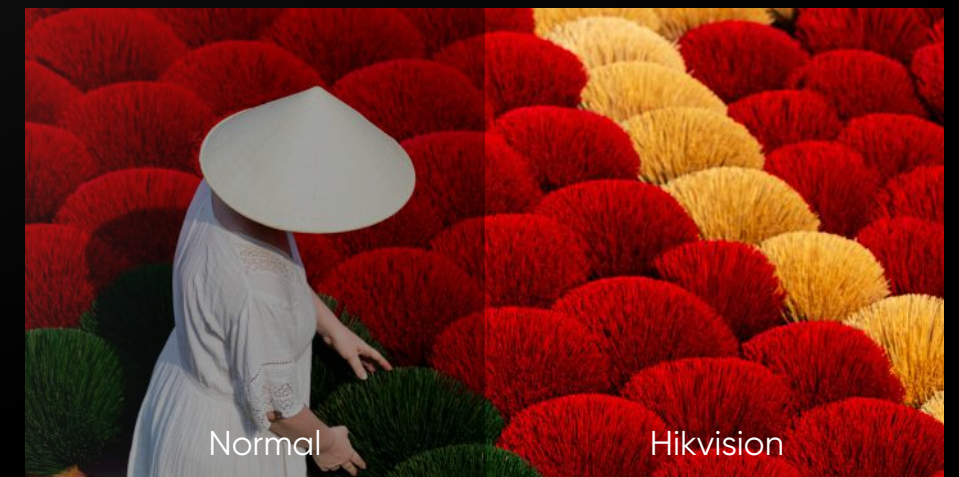


### 7680 Hz

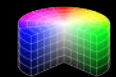
High refresh rates of 7680 with no visible scan lines in photos or videos

### 14 bit

Grayscale depth of 14 bit (customizable to 16 bit) for crisp, clear images with rich detail



### 95%



Over 95% of the DCI-P3 Color Gamut, delivering cinema-grade color accuracy and vibrant, lifelike visuals

### 4500 nits

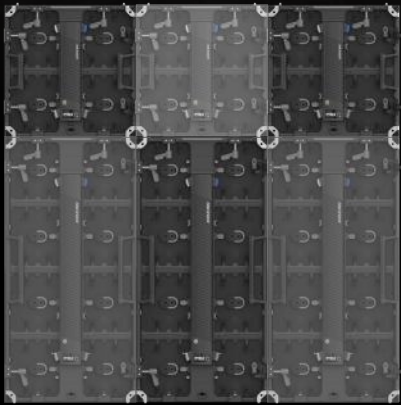
Indoor brightness of 1000 nits, outdoor brightness of 4500 nits (customizable to 4500 nits for black SMD)



# Seamless Splicing for Unlimited Creativity

### Mixed Splicing

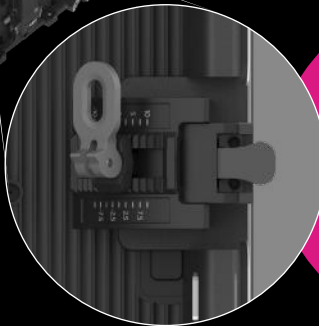
500x500 mm and 500x1000 mm cabinets with the same pixel pitch can be combined to meet diverse size needs



### Beyond Flat Curves at Your Command

10° Inward Curve →

← 10° Outward Curve



### Arc Splicing

The rotating arc lock allows customizable angles for both inward and outward curves, up to 10° each

## Application Scenarios



## Key Spec

Product Model	P2.6 INDOOR	P2.9 INDOOR	P3.9 INDOOR	P2.9 OUTDOOR	P3.9 OUTDOOR
Application Scenarios	Indoor			Outdoor	
Pixel Pitch (mm)	2.604	2.971	3.91	2.971	3.91
Module Resolution	96x96	84X84	64X64	84X84	64X64
Module Size (mm)	250X250X16				
Cabinet Size (mm)	500X500X69	500X500X69, 500X1000X69			
Brightness (nits)	1,000			4,500	
Contrast Ratio	6,000:1			4,000:1	
Cabinet Weight (Kg)	< 7			< 11	
Viewing Angle (H/V)	160°/140°				
Refresh Rate (Hz)	7,680				
Operating Temperature	-20~45℃				
IP Rating (front/rear)	IP40			IP65	
Grayscale	>= 14bit				