

Flex R-IFL12-US02

10kW Split-phase Off Grid Inverter

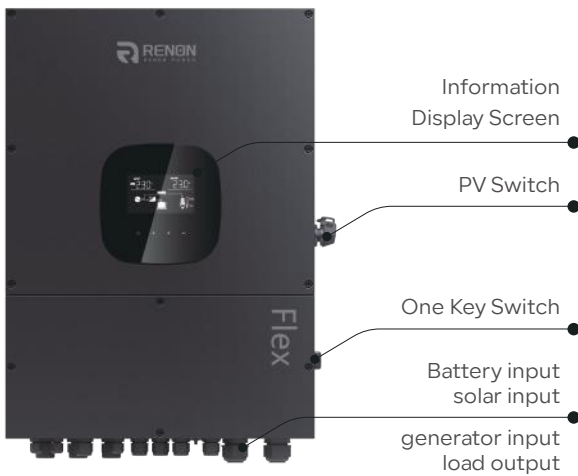
Integrated Design: Renon Power's Flex Inverter features an integrated design with a built-in AC and DC disconnects, overcurrent protection, and rapid shutdown. Users can monitor and control both the flex and Xtreme battery through the Renon Smart app remotely via wifi.

Efficiency and Reliability: Equipped with dual high-efficiency 18amp MPPT channels (18A each), the Flex series maximizes solar energy capture with up to 12kW of solar power input. It meets US safety and performance standards with certifications including IEEE 1547.1, UL 1741SA, and UL9540.

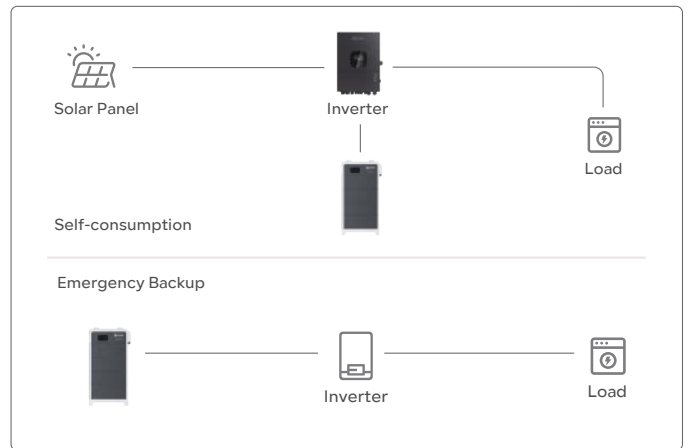
Easy Installation and Flexible Expansion: The system supports up to six units in parallel, for 60kW of power output. Each inverter can be paired with up to 30 Xtreme battery systems, allowing for over 5 megawatt hours of energy storage in a system.



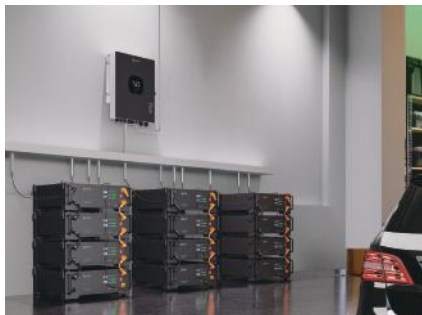
Product Details



System Layout



Application Scenario



Model	
Inverter Model	R-IFL12-US02
Phase(V)	120 / 240 Split phase, 120 / 208 Split phase
Max. PV Input Power(kW)	12
Rated Output Power(kVA/kW)	10/10
Max. Charging Power(kW)	10
Grid Output (AC)	
Nominal Output Voltage(Vac)	120 (P-N), 208 (P-P), 240 (P-P)
Output Voltage Range(Vac)	105.5 ~ 132(per phase)
Nominal Output Current(A)	41.5 (per phase)
Power Factor	0.9 lag to 0.9 lead
AC Input	
AC Start-up Voltage / Auto Restart Voltage(Vac)	85 / 90(per phase)
Acceptable Input Voltage Range(Vac)	85 ~ 140(per phase)
Frequency Range(Hz)	50 / 60(Auto sensing)
Max. AC Input Current(A)	40 (per phase)
Battery & Charger	
Nominal DC Voltage(Vdc)	40 ~ 62
Max. Solar Charging Current(A)	200
Max. AC Charging Current(A)	200
Max. Charging Current(A)	200
General Parameters	
Dimensions (W*D*H)	515*215.5*715mm / 20.2*8.5*28in
Weight	45kg / 99lb
Certifications	UL1741SB, FCC,CEC
Scalability	Max. 6 systems in parallel
Communication Port	RS232, RS485, WI-FI, USB
IP Rating	IP65
Operating Temperature	-25 ~ 60°C (>45°C derating)