

# QUICK VIEW 2023

Unique, effective & passive shading from the sun's heat



# KOOLSHADE®

The Ultimate In Passive Solar Shading

Passively shading the world from the sun's heat

Stop solar heat gain ☉

Retain full views out ☉

Reduce or remove the need for Air-Con ☉

Simple installation ☉

100% recyclable ☉

Training

Guidance

Support

Progression

Confidence

## COMPANY

---

who we are	04
what we do	04
who we do it for	04

## PRODUCT

---

installation options - cable system, screen system and outriggers	05
fabric data	06
case study: commercial property	07
case study: residential property	08
colour options	09

## GET IN TOUCH

---

contact information	10
---------------------	----

# COMPANY

• who we are

• what we do

• who we do it for

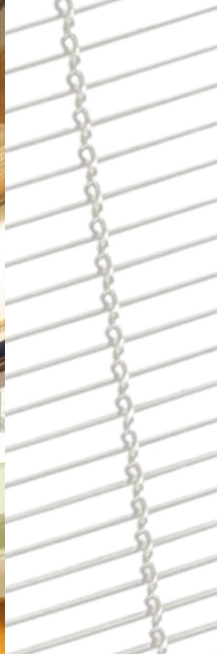
- We are a company of like-minded people that have a passion for making occupied spaces more comfortable.
- As a multi-disciplined group, we take enormous pleasure in taking a unique, unbeatable, solar shading product to market.
- We are weavers, manufacturers, engineers and scientists and we are conscious of sustainability and the benefits of passive remedies to climate change.

- We weave KoolShade®. A metal fabric with its louvres set at specific angles, it cools buildings by stopping the heat of the sun.
- We work with partners to estimate projects, specify a solution and ensure a rapid, safe and enduring installation.

- eco-conscious, passive house architects forward-thinking constructors and environmentally-friendly homeowners

FOR PEOPLE  
their health  
and wellbeing





The Fabric has an extremely high tensile strength so can be fixed with a range of cable options for a contemporary and stylish appearance.

There are a wide range of options for sliding, opening and removing the frames where a static fix is not required.

The fabric can be tensioned in frames and fixed to buildings.



**KoolShade® fabric is what we weave.** First created in the 1940's SmartLouvre Technology has brought this solar shading technology into the 21st century. The original weaving machines have been computerised and a range of fabrics has been developed to further combat solar heat gain.

Made from recycled scrap metal and 100% recyclable, KoolShade® has never been more beneficial; to you, your buildings and in the race against climate change.

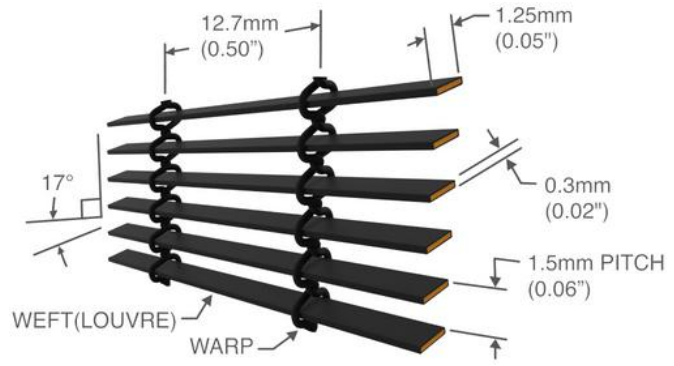
**KoolShade® Metal Fabric K700-17**

<b>Thickness of fabric:</b> 1.55mm coated	<b>Warp spacing:</b> 12.70mm centre to centre
<b>Weft width:</b> 1.25mm coated	<b>Fabric Weight:</b> 1.10 kg / m2
<b>Weft thickness:</b> 0.30mm coated	<b>Clear open area:</b> 80%
<b>Louvre pitch:</b> 1.50mm centre to centre	<b>Fabric composition:</b> 90% CuZn15 (C230) commercial bronze and 10% CUSi3Mn1 (C655) silicon bronze
<b>Gap between each louvre:</b> 1.20mm coated	

**Openness factor:**  
67%

**Finishes:**  
Polyester powder coat in any RAL colour (with the ability to create designs on the fabric which are directionally visible)

**Fire rating:**  
Class A1/A2-s1,d0 in accordance with BS EN 13501-1:2007+A1:2009



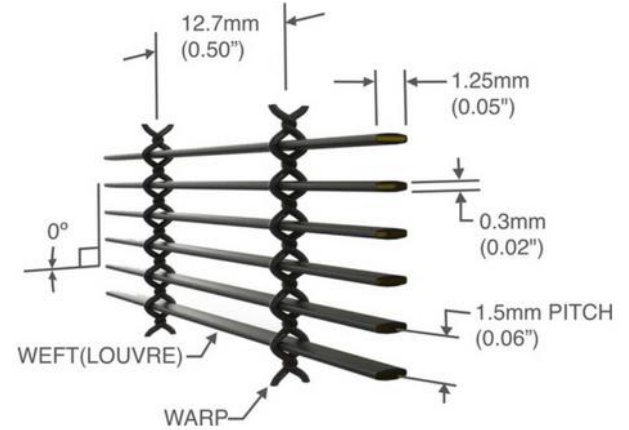
**KoolShade® Metal Fabric K700-0**

<b>Thickness of fabric:</b> 1.55mm coated	<b>Warp spacing:</b> 12.70mm centre to centre
<b>Weft width:</b> 1.25mm coated	<b>Fabric Weight:</b> 1.10kg / m2
<b>Weft thickness:</b> 0.30mm coated	<b>Clear open area:</b> 80%
<b>Louvre pitch:</b> 1.50mm centre to centre	<b>Fabric composition:</b> 90% CuZn15 (C230) commercial bronze and 10% CUSi3Mn1 (C655) silicon bronze
<b>Gap between each louvre:</b> 1.20mm coated	

**Finishes:**  
Polyester powder coat in any RAL colour (with the ability to create designs on the fabric which are directionally visible)

**Fire rating:**  
Class A1/A2-s1,d0 in accordance with BS EN 13501-1:2007+A1:2009

**Resistance to wind:**  
Hurricane proof: 100mph/160kph



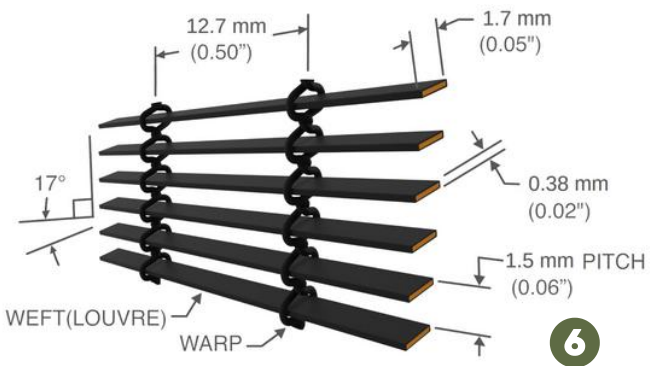
**KoolShade® Metal Fabric K700-LSA**

<b>Thickness of fabric:</b> 2.26mm coated	<b>Warp spacing:</b> 12.70mm centre to centre
<b>Weft width:</b> 1.7mm coated	<b>Fabric Weight:</b> 1.35kg / m2
<b>Weft thickness:</b> 0.38mm coated	<b>Clear open area:</b> 80%
<b>Louvre pitch:</b> 1.5mm centre to centre	<b>Fabric composition:</b> 90% CuZn15 (C230) commercial bronze and 10% CUSi3Mn1 (C655) silicon bronze
<b>Gap between each louvre:</b> 1.12mm coated	

**Finishes:**  
Polyester powder coat in any RAL colour (with the ability to create designs on the fabric which are directionally visible)

**Fire rating:**  
Class A1/A2-s1,d0 in accordance with BS EN 13501-1:2007+A1:2009

**Resistance to wind:**  
Hurricane proof: 100mph/160kph





### Background:

This new build house features impressive glazed sections to the front and rear elevations.

### The problem:

The internal temperatures were unbearable on sunny days and were hindering the owner's recovery from a health condition.



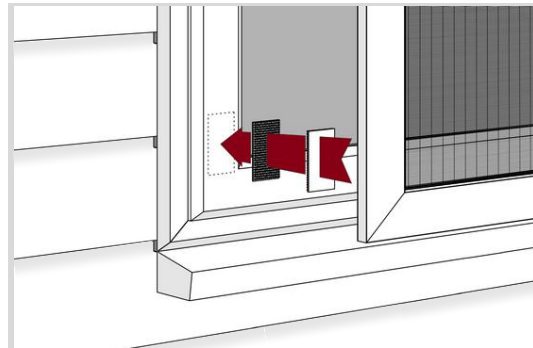
## Case Study 1. Gable End, Private Customer - Woking



### Results:

- Significant reduction in internal temperatures
- Balanced daylighting and full CRI
- Maintained ability to view out
- Compliant with all standards and regulations
- Easy to clean and durable

**KOOLSHADE**<sup>®</sup>  
The Ultimate In Passive Solar Shading



Prior to installation, the indoor temperatures had reached 30 degrees Celsius on a day when it was only 18 degrees outside.

With KoolShade<sup>®</sup>, the owner can now enjoy comfortable temperatures in her new home, as well as the views out through the screens' 80% open area and full natural daylight continuing to flood in.

With no mullions or brickwork to install the shading onto, 3M Dual Lock was used to fix to the window frames.



### Background:

Endeavour House cost £28m. Touted as the most most energy efficient office buildings in Europe, it was fundamentally flawed.

### The problem:

The highly glazed building suffered from extreme overheating. Areas of the building were unusable and the cost to aircondition it were spiralling.



## Case Study 2. Endeavour House, Suffolk County Council



### Results:

- Significant reduction in internal temperatures
- Over 68%+ reduction in cooling power load
- No more unusable 'hot-spots'
- Removal of glare where installed



With no mullions or brickwork to install the shading onto, 3M VHB Tape was used to fix to the glazing.



Suffolk County Council undertook a trial using KoolShade to overcome the issues that come with highly glazed structures.

The environmental intentions are very welcome, but lack of natural shade and ventilation is causing critical issues.

**As the climate gets hotter, finding passive ways to stop the sun's heat are essential.**



Literally,  
any colour you like.



#353c40      ≈ Anthracite Grey





**KoolShade® fabric.** Unique, effective & passive shading from the sun's heat

SLTechnology Ltd. Global Manufacturers of MicroLouvre KoolShade® Fabric  
18 The Tanneries, Brockhampton Lane, Havant, Hampshire, PO9 1JB, UK



[info@smartlouvre.com](mailto:info@smartlouvre.com)



[smartlouvre.com](http://smartlouvre.com)



02392 456 333